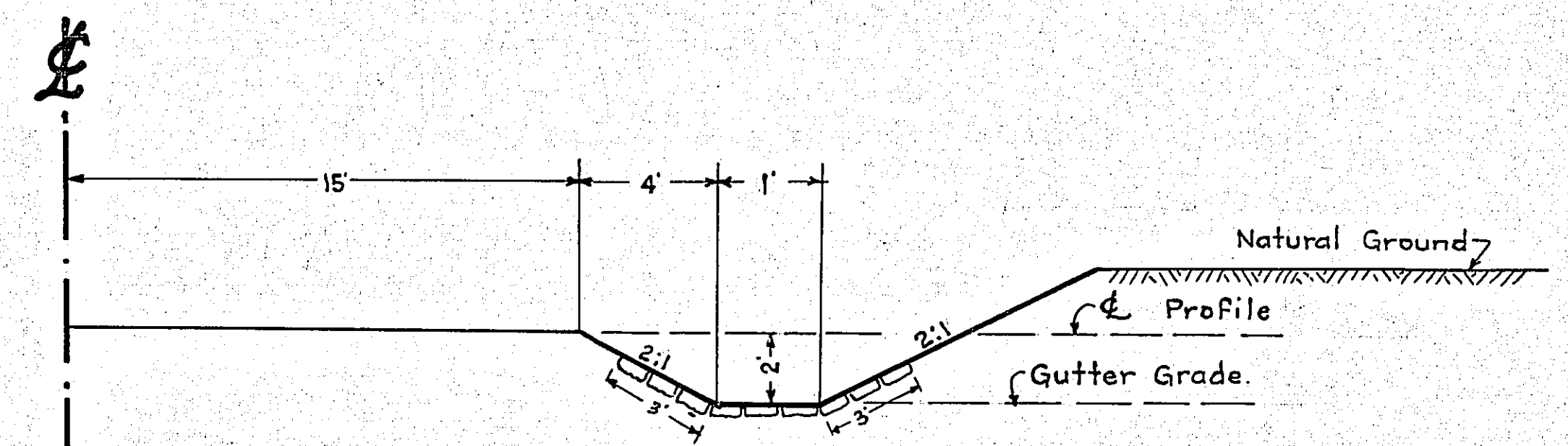
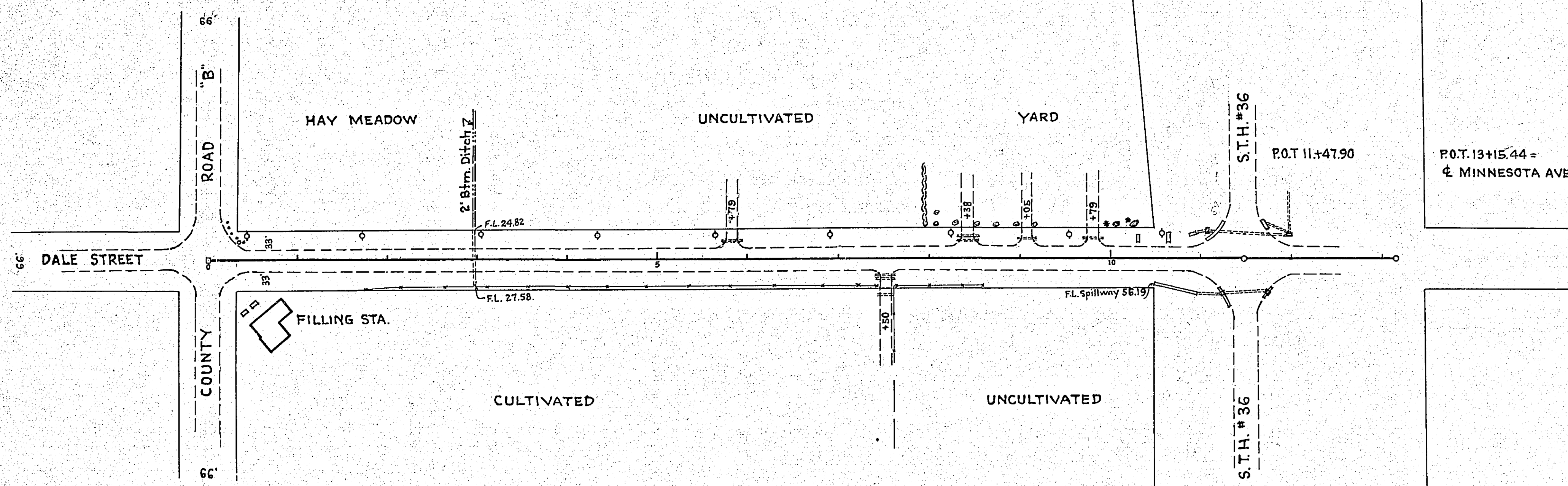
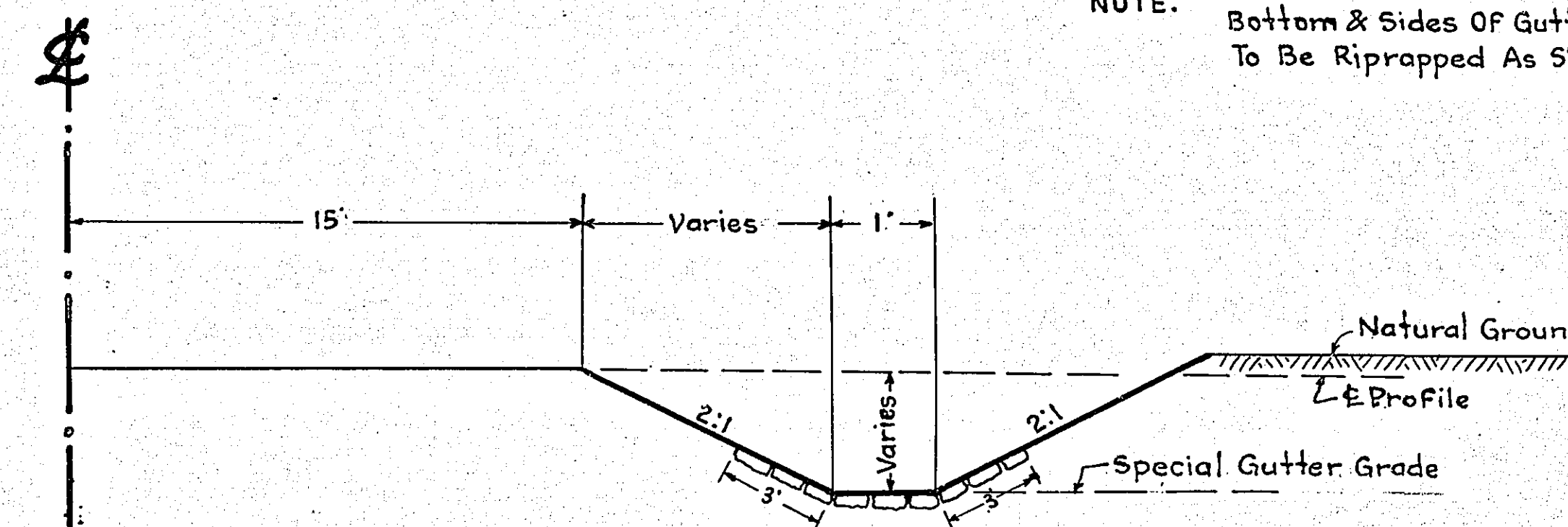


2+99 ± Inp. 24'x60' C.M.
 5+79 Lt. Inp. 18'x18' C.M.
 7+50 Rt. Inp. 2-12'x8.8' C.M.
 8+38 Lt. Inp. 2-15'x20' C.M.
 9+05 Lt. Inp. 18'x20' C.M.
 9+79 Lt. Inp. 18'x20' C.M.



TYPICAL SECTION
 STA. 4+00 RT. TO STA. 9+50 RT.

NOTE: Bottom & Sides OF Gutters Are To Be Ripped As Shown.



SPECIAL SECTION
 STA. 3+00 RT. TO STA. 4+00 RT.
 STA. 9+50 RT. TO STA. 10+50 RT.

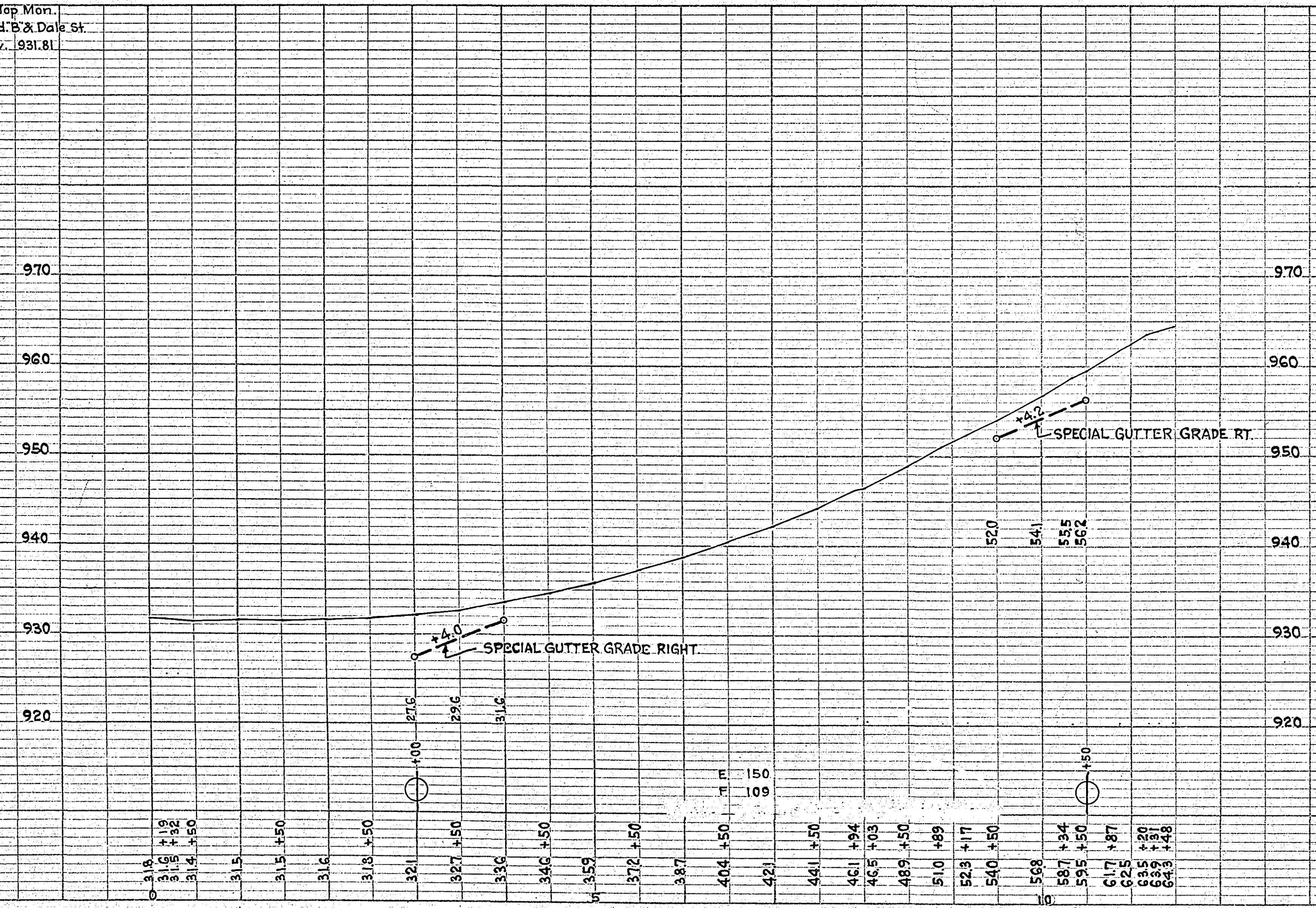
PLAN

DATE	
BY	
SURVEYED	
NOTE BOOK	
ALIGNMENT CHECKED	
RT. OF WAY CHECKED	
NO.	

PROFILE

DATE	
BY	
SURVEYED	
NOTE BOOK	
E. M. A. NOTED	
STRUCTURE NOTATION CHECKED	
NO.	

B.M. Top Mon.
 Co. Rd. 'B' & Dale St.
 Elev. 931.81



ESTIMATED QUANTITIES

Excavation	Cu. Yds.	150
Riprap Stone	" "	100

OFFICE OF
 RAMSEY COUNTY SURVEYOR
 HARRY S. BRONSON
 PLAN OF STONE GUTTER
DALE ST.
 FROM CO. RD. 'B' TO S.T.H. #36
 AUG. 1940 SCALE AS SHOWN

PLANNED BY *A. D. Crumpton*
 ASSISTANT ENGINEER
 PLANS APPROVED *8/19 1940*
 COUNTY SURVEYOR
 APPROVED *8/19 1940*
 CHAIRMAN COUNTY BOARD