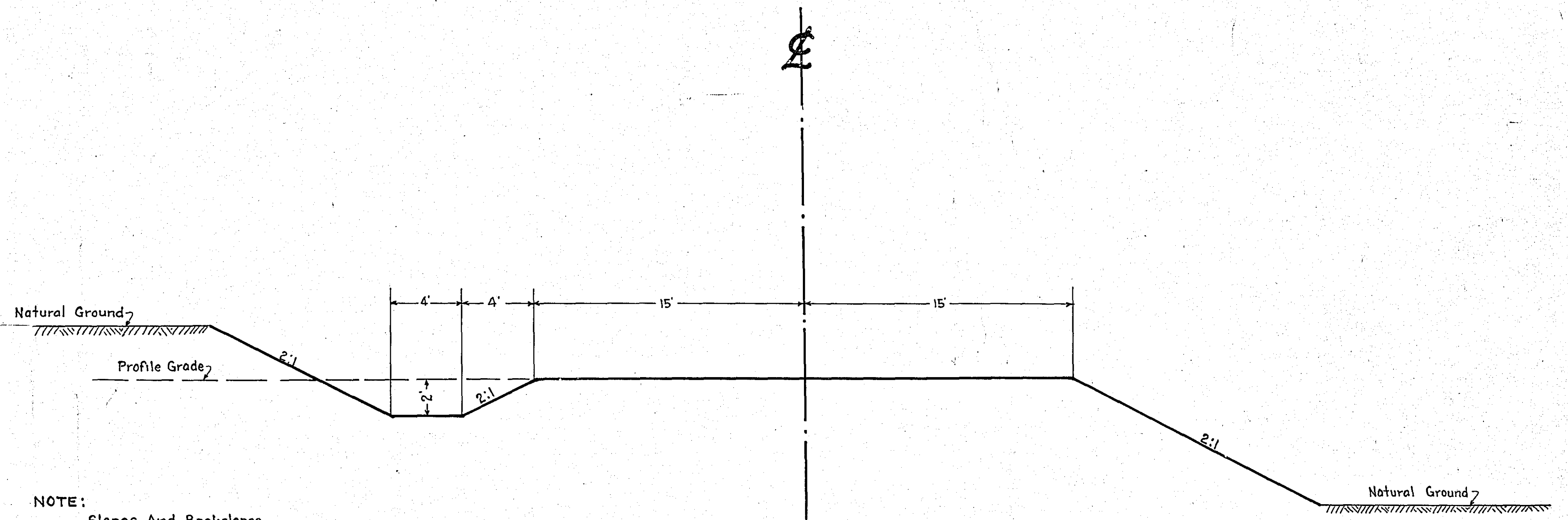


STATEMENT OF ESTIMATED QUANTITIES

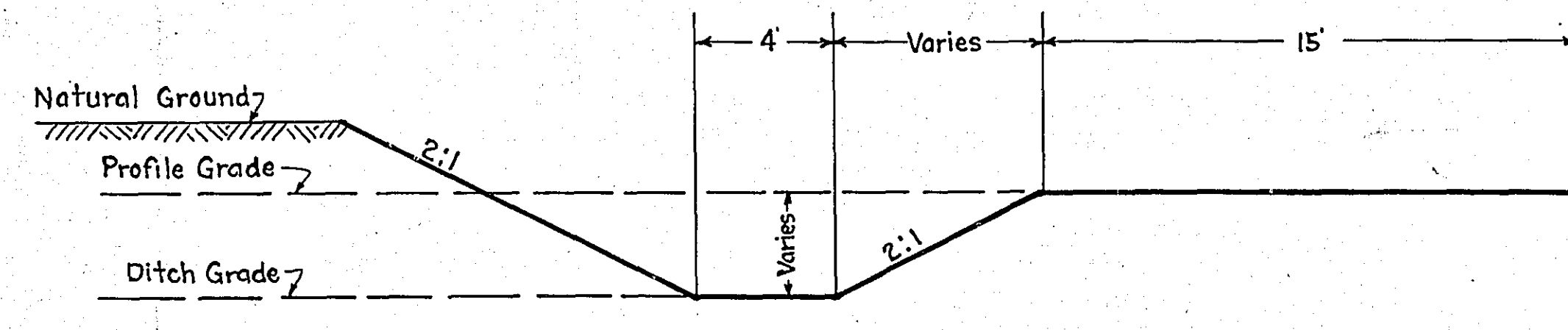
CLASS	ITEM	UNIT	MILE From To	MILE From To	MILE From To	MILE From To	MILE From To	MILE From To	MILE From To	MILE From To	MILE From To	MILE From To	TOTAL ESTIMATED QUANTITIES
GRADING	1	Clearing	Trees	40									
	2	Grubbing	Trees	75									
	3	Clearing	Acres										
	4	Grubbing	Acres										
	5	Excavation Earth	Cu. Yds.	18,973									
	6	Excavation Loose Rock	Cu. Yds.										
	7	Excavation Solid Rock	Cu. Yds.										
	8	Excavation Overhaul	Cu. Yds.										
	9	Excavation Special	Cu. Yds.										
	10	Excavation Hand Ditch	Cu. Yds.										
	11	Install 12" C.M.	Lin. Ft.										
	12	Install 15" C.M.	Lin. Ft.	230									
	13	Install 18" C.M.	Lin. Ft.										
	14	Install 24" C.M.	Lin. Ft.										
	15	Install	Lin. Ft.										
	16	Install	Lin. Ft.										
	17	Install 18" Conc. Pipe	Lin. Ft.	194									
	18	Install 24" P3	Lin. Ft.										
	19	Install 30" P3	Lin. Ft.										
	20	Install 36" P3	Lin. Ft.										
	21	Install	Lin. Ft.										
	22	Install	Lin. Ft.										
	23	Remove Old Culvert	Lin. Ft.	42									
	24	Replace Old Culvert	Lin. Ft.										
	25	Finishing	Sq. Yds.	24,800									
	26	Rubble Gutter	Cu. Yds.										
	27	Headwall Concrete	Cu. Yds.										
	28	Headwall Steel	Lbs.										
	29	Remove Fence	Lin. Ft.	2,660									
	30	Replace Fence	Lin. Ft.	2,660									
	31												
	32												
C.M. CULVERTS	1	Furnish 12" C.M.	Lin. Ft.										
	2	Furnish 15" C.M.	Lin. Ft.	230									
	3	Furnish 18" C.M.	Lin. Ft.										
	4	Furnish 24" C.M.	Lin. Ft.										
	5	Furnish	Lin. Ft.										
	6	Furnish	Lin. Ft.										
	7	Furnish 12" C.M. Band	Each										
	8	Furnish 15" C.M. Band	Each										
	9												
	10												
P3 CULVERTS	1	Furnish 18" Conc. Pipe	Lin. Ft.	194									
	2	Furnish 24" P3	Lin. Ft.										
	3	Furnish 30" P3	Lin. Ft.										
	4	Furnish 36" P3	Lin. Ft.										
	5												
	6												
GUARD RAIL	1	Guard Rail - Cable	Lin. Ft.	663									
	2	Guard Rail Anchors	Each										
	3	Dummy Posts	Each										
	4												
SIDEWALKS AND CURBING	1	Concrete Curb - Straight	Lin. Ft.										
	2	Concrete Curb - Radius	Lin. Ft.										
	3	Remove Old Curb	Lin. Ft.										
	4	Remove Old Curb and Gutter	Lin. Ft.										
	5	Remove Old Sidewalk	Sq. Ft.										
	6	Replace Old Sidewalk	Sq. Ft.										
	7	Construct New Sidewalk	Sq. Ft.										
	8	Curb Inlet	Each										
	9	Catch Basin Complete	Each										
	10												
	11												
	12												
SEWER	1	12" Vitrified Sewer Pipe	Lin. Ft.										
	2	15" Vitrified Sewer Pipe	Lin. Ft.										
	3	18" Vitrified Sewer Pipe	Lin. Ft.										
	4	20" Vitrified Sewer Pipe	Lin. Ft.										
	5	24" Vitrified Sewer Pipe	Lin. Ft.										
	6	Manhole Complete	Each										
	7	Catch Basin Complete	Each										
	8												
	9												
	10												
SURFACE	1	Gravel	Cu. Yds.	308									
	2	Hauling Gravel	C.Y. Mi.										
	3	Shaping & Compacting	Cu. Yds.										
	4	Oil Stabilization	Sq. Yds.	8,000									
	5	Cut-back	Sq. Yds.										
	6												
	7												
	8												
STRUCTURES	1	Concrete	Cu. Yds.										
	2	Reinforcing Steel	Lbs.										
	3	Excavation	Cu. Yds.										
	4	Piling	Lin. Ft.										
	5	Rem. Timber Bridge	Each	1									
	6												
	7												
	8												
	9												
	10												

DETAILS



NOTE:
Slopes And Backslopes
To Conform To R.O.W. Widths.

TYPICAL SECTION



SPECIAL SECTION
STA. 11+00 TO STA. 15+00 LT.

OFFICE OF
RAMSEY COUNTY SURVEYOR
HARRY S. BRONSON

GRADING PLAN OF
FLOWER STREET Co. Rd B-2
FROM RICE STREET TO 3248' E.

APRIL 1940 SCALE AS SHOWN

PLANS APPROVED 4/11 1940 *Harry S. Bronson*
COUNTY SURVEYOR

APPROVED 4/15 1940 *W. K. Jallon*
CHAIRMAN COUNTY BOARD

APPROVED 4/11 1940 *Levin Mueschler*
CHAIRMAN NEW CANADA TOWNSHIP BOARD

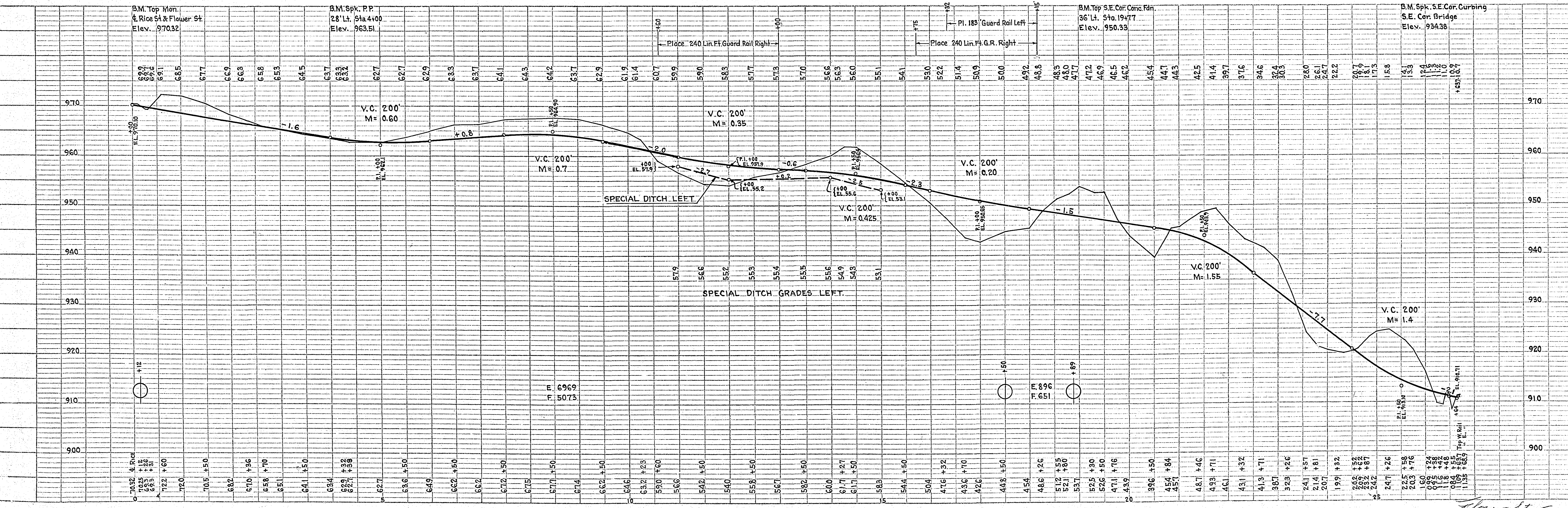
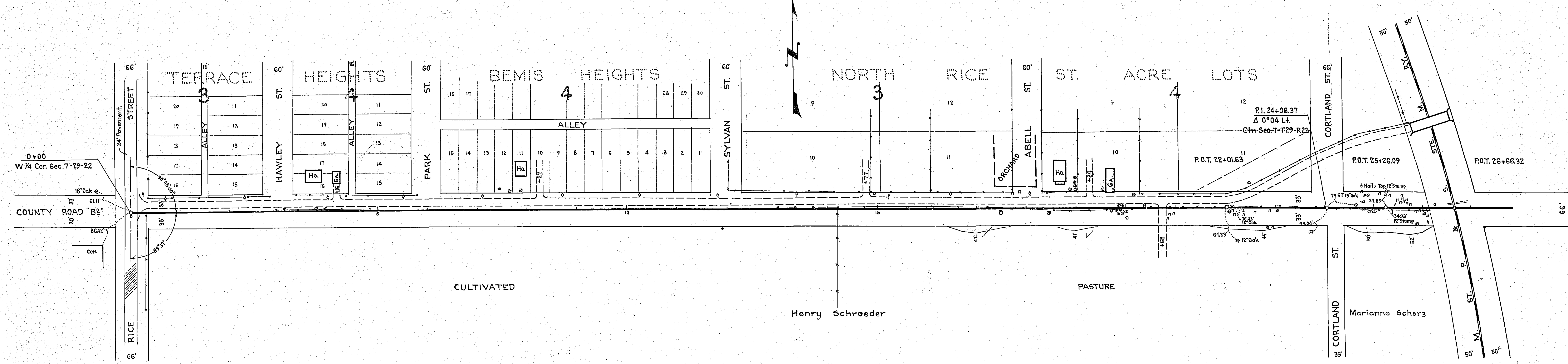
PLANNED BY *A. D. Cranston*
ASSISTANT ENGINEER

PLAN	BY	DATE
SURVEYED		
NOTE BOOK		
ALIGNMENT CHECKED		
RET. OF WAY CHECKED		
NO.		

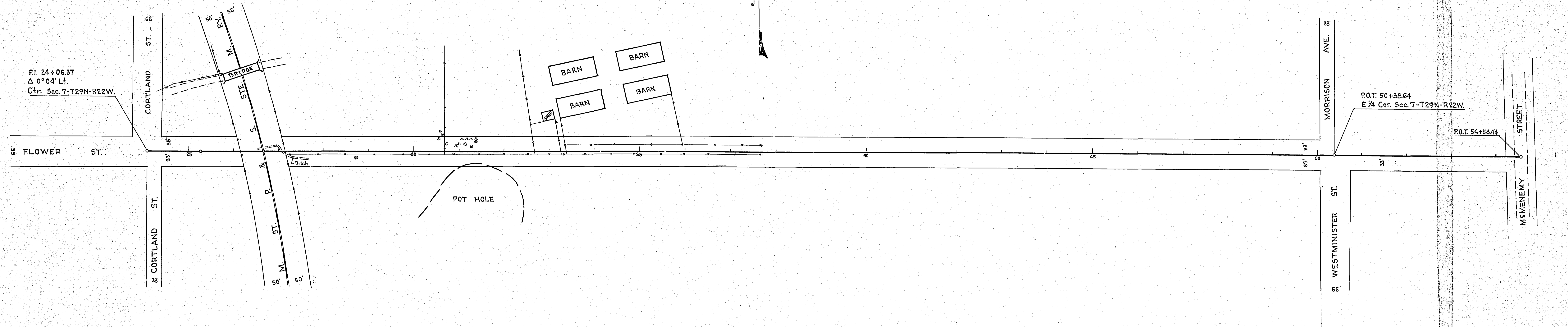
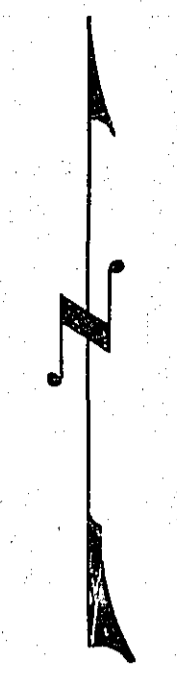
PROFILE	BY	DATE
SURVEYED		
NOTE BOOK		
GRADES CHECKED		
S.M.F. NOTED		
STRUCTURE NOTATIONS		
NO.		

4+16 L.T. PI. 15'x20' C.M. 5+00 C. PI. 18'x34' Conc.P. 8+27 L.T. PI. 15'x20' C.M. 12+00 C. PI. 18'x48' Conc.P. 14+77 L.T. PI. 15'x20' C.M. 19+34 L.T. PI. 15'x20' C.M. 20+68 R.L. No Culv. Reqd. 20+00 C. No Culv. Reqd. 26+66 R.L. PI. 15'x30' Conc.P. 26+66 L.T. PI. 18'x30' Conc.P. 26+74 L.T. Imp. 12'x42' Conc. Culv. Remove

NOTE:
Place 6-15'x20' C.M.
As Directed By The Engineer.



31+50.4
Pl. 18'x44' Conc. P.



P.I. 24+06.37
Δ 0°04' Lt.
Ctr. Sec. 7-T29N-R22W.

P.O.T. 50+38.64
E 1/4 Cor. Sec. 7-T29N-R22W.

P.O.T. 54+58.44

B.M. Spk. S.E. Cor. Curbing
S.E. Cor. Bridge
Elev. 934.38

B.M. Spk. 15'0pk
35' Rt. Sta. 38+64
Elev. 889.70

