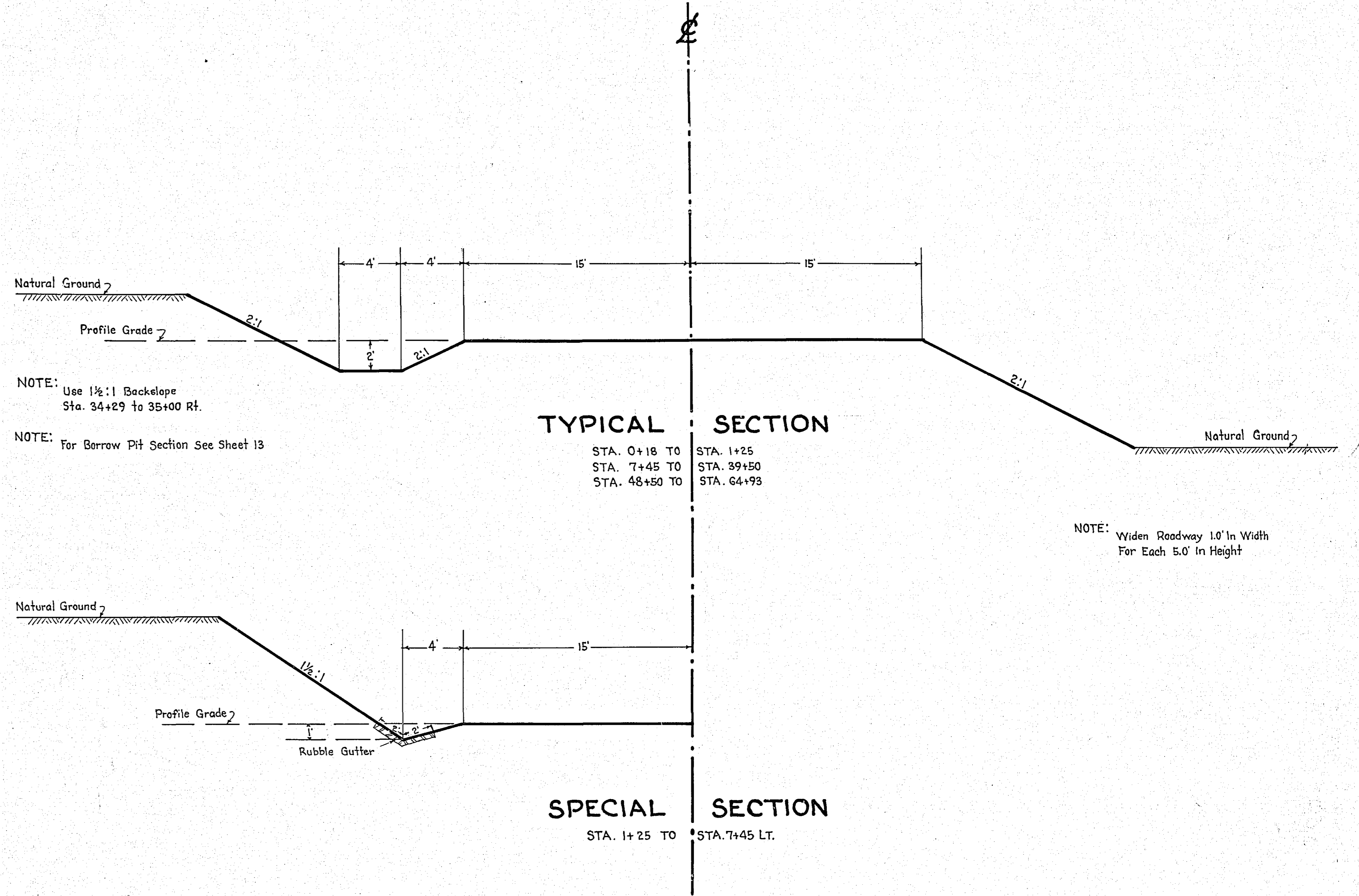


STATEMENT OF ESTIMATED QUANTITIES

CLASS	ITEM	UNIT	MILE From To	MILE From To	MILE From To	MILE From To	MILE From To	MILE From To	MILE From To	MILE From To	MILE From To	MILE From To	MILE From To	TOTAL ESTIMATED QUANTITIES	
GRADING	1	Clearing	Trees	120											
	2	Grubbing	Trees	136											
	3	Clearing	Acres	1.25											
	4	Grubbing	Acres	1.25											
	5	Excavation Earth	Cu. Yds.	35845											
	6	Excavation	Cu. Yds.												
	7	Excavation Solid Rock	Cu. Yds.												
	8	Excavation Overhaul	Cu. Yds.												
	9	Excavation Special	Cu. Yds.												
	10	Excavation Hand Ditch	Cu. Yds.												
	11	Install 12" C.M.	Lin. Ft.	32											
	12	Install 15" C.M.	Lin. Ft.	380	340										
	13	Install 18" C.M.	Lin. Ft.	488	92										
	14	Install 24" C.M.	Lin. Ft.	48											
	15	Install 21" C.M.	Lin. Ft.	22											
	16	Install	Lin. Ft.												
	17	Install 18" Ps	Lin. Ft.												
	18	Install 24" Ps	Lin. Ft.												
	19	Install 30" Ps	Lin. Ft.												
	20	Install 36" Ps	Lin. Ft.												
	21	Install	Lin. Ft.												
	22	Install	Lin. Ft.												
	23	Remove Old Culvert	Lin. Ft.	(66) 20											
	24	Replace Old Culvert	Lin. Ft.												
	25	Finishing	Sq. Yds.	42800											
	26	Rubble Gutter	Cu. Yds.	33											
	27	Headwall Concrete	Cu. Yds.												
	28	Headwall Steel	Lbs.												
	29	Remove Fence	Lin. Ft.	3925											
	30	Replace Fence	Lin. Ft.	3825											
	31	Borrow	Cu. Yds.	3355											
	32														
C.M. CULVERTS	1	Furnish 12" C.M.	Lin. Ft.	32											
	2	Furnish 15" C.M.	Lin. Ft.	380	340										
	3	Furnish 18" C.M.	Lin. Ft.	488	92										
	4	Furnish 24" C.M.	Lin. Ft.	48											
	5	Furnish 21" C.M.	Lin. Ft.	22											
	6	Furnish	Lin. Ft.												
	7	Furnish 12" C.M. Band	Each												
	8	Furnish 15" C.M. Band	Each												
	9														
	10														
P3 CULVERTS	1	Furnish 18" Ps	Lin. Ft.												
	2	Furnish 24" Ps	Lin. Ft.												
	3	Furnish 30" Ps	Lin. Ft.												
	4	Furnish 36" Ps	Lin. Ft.												
	5														
	6														
GUARD RAIL	1	Guard Rail - Cable Remove	Lin. Ft.	1723											
	2	Guard Rail - Plank Remove	Lin. Ft.	1518											
	3	Guard Rail - Cable Replace	Lin. Ft.	1723											
	4	New Guard Rail Cable	Lin. Ft.	458											
SIDEWALKS AND CURBING	1	Concrete Curb - Straight	Lin. Ft.												
	2	Concrete Curb - Radius	Lin. Ft.												
	3	Remove Old Curb	Lin. Ft.												
	4	Remove Old Curb and Gutter	Lin. Ft.												
	5	Remove Old Sidewalk	Sq. Ft.												
	6	Replace Old Sidewalk	Sq. Ft.												
	7	Construct New Sidewalk	Sq. Ft.												
	8	Curb Inlet	Each												
	9	Catch Basin Complete	Each												
	10														
	11														
	12														
SEWER	1	12" Vitrified Sewer Pipe	Lin. Ft.												
	2	15" Vitrified Sewer Pipe	Lin. Ft.												
	3	18" Vitrified Sewer Pipe	Lin. Ft.												
	4	20" Vitrified Sewer Pipe	Lin. Ft.												
	5	24" Vitrified Sewer Pipe	Lin. Ft.												
	6	Manhole Complete	Each												
	7	Catch Basin Complete	Each												
8															
9															
10															
SURFACE	1	Gravel On Site	Cu. Yds.	535											
	2	Hauling Gravel	C.Y. Mi.												
	3	Shaping & Compacting	Cu. Yds.												
	4	Oil	Gal.												
	5	Cut-back	Sq. Yds.												
	6	Blacktop	Sq. Yds.	16100											
	7														
	8														
STRUCTURES	1	Concrete	Cu. Yds.												
	2	Reinforcing Steel	Lbs.												
	3	Excavation	Cu. Yds.												
	4	Piling	Lin. Ft.												
	5														

Panel figure was the same as the one in the plan of the B. on culvert. See note on page 10.

DETAILS



NOTE: Use 1 1/2:1 Backslope Sta. 34+29 to 35+00 FT.
NOTE: For Barrow Pit Section See Sheet 13

TYPICAL SECTION

STA. 0+18 TO STA. 1+25
STA. 7+45 TO STA. 39+50
STA. 48+50 TO STA. 64+93

NOTE: Widen Roadway 10' in Width For Each 5.0' in Height

SPECIAL SECTION

STA. 1+25 TO STA. 7+45 LT.

OFFICE OF
RAMSEY COUNTY SURVEYOR
HARRY S. BRONSON
GRADING PLAN
SNAIL LAKE BOULEVARD
FROM VICTORIA ST. TO HODGSON ROAD.
NOVEMBER 1939 SCALE AS SHOWN
PLANS APPROVED *12/1* 1939 *Harry S. Bronson*
RAMSEY COUNTY SURVEYOR
APPROVED 1939 *W. J. Fallon*
CHAIRMAN COUNTY BOARD
APPROVED *12/1* 1939 *W. J. Fallon*
PRINCIPAL ASSISTANT ENGINEER

PLAN	DATE
REVISED	
NOTED	
NOTE BOOK ALIGNED CHECKED	
NO. OF SHEETS	
NO. OF SHEETS CHECKED	
NO. OF SHEETS	

PROFILE	DATE
REVISED	
NOTED	
NOTE BOOK ALIGNED CHECKED	
NO. OF SHEETS	
NO. OF SHEETS CHECKED	
NO. OF SHEETS	

1+26 & Reiland Lane
Inp. 24"x32" C.M.

12+19 &
Inp. 21"x16" C.M.
Ext. 21"x22" C.M. Rt.

20+18 Rt.
No Culvert Req'd.

20+66 Lt.
No Culvert Req'd.

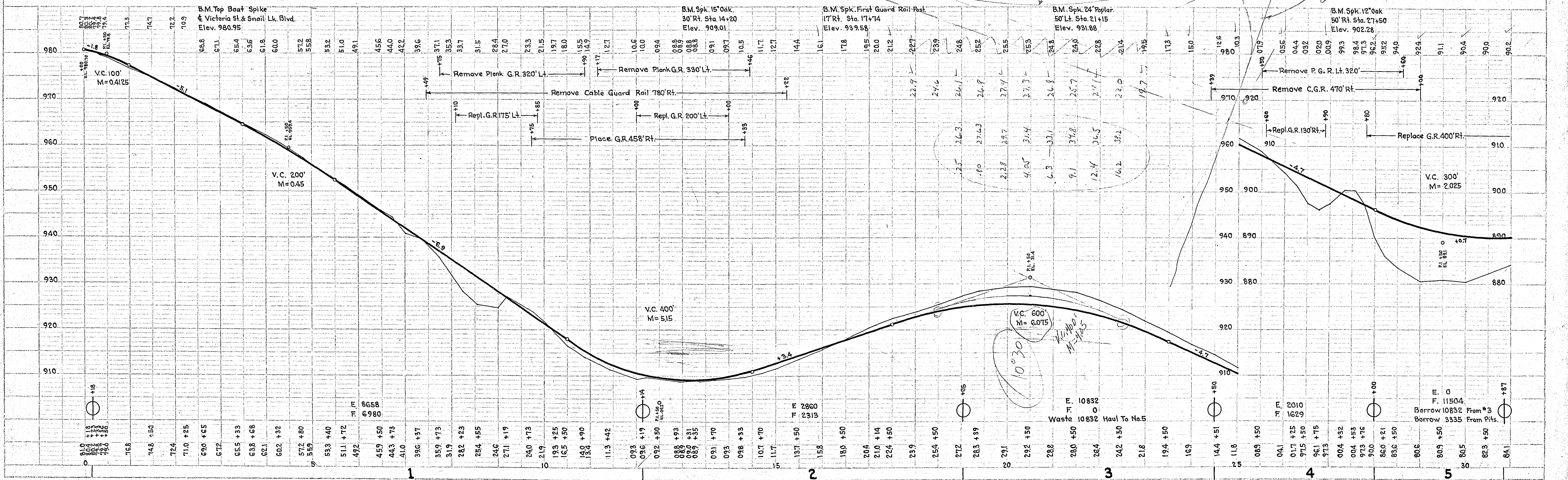
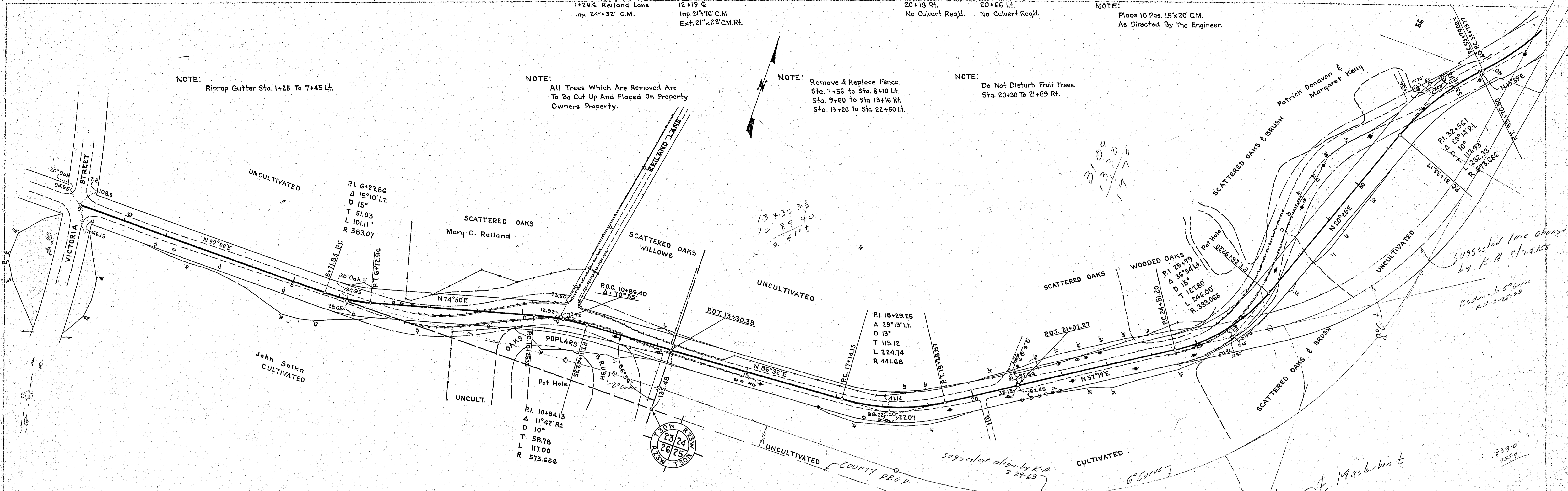
NOTE:
Place 10 Pes. 15"x20" C.M.
As Directed By The Engineer.

NOTE:
Riprap Gutter Sta. 1+25 To 7+45 Lt.

NOTE:
All Trees Which Are Removed Are
To Be Cut Up And Placed On Property
Owners Property.

NOTE:
Remove & Replace Fence.
Sta. 7+56 to Sta. 8+10 Lt.
Sta. 9+60 to Sta. 13+16 Rt.
Sta. 13+26 to Sta. 22+50 Lt.

NOTE:
Do Not Disturb Fruit Trees.
Sta. 20+30 To 21+89 Rt.



3100
-330
1770

13+30.38
10 89 40
2 41 15

Suggested line change
by K.A. 8/29/55
Reduce to 50' curve
K.A. 3-28-53

suggested align. by K.A.
3-29-53

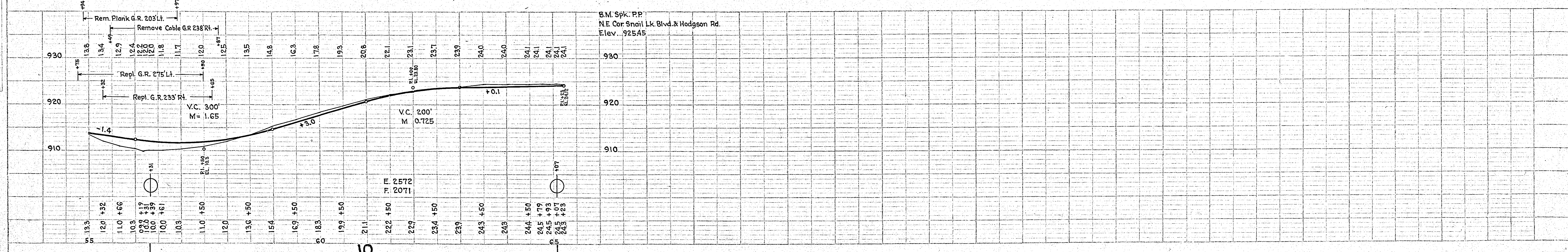
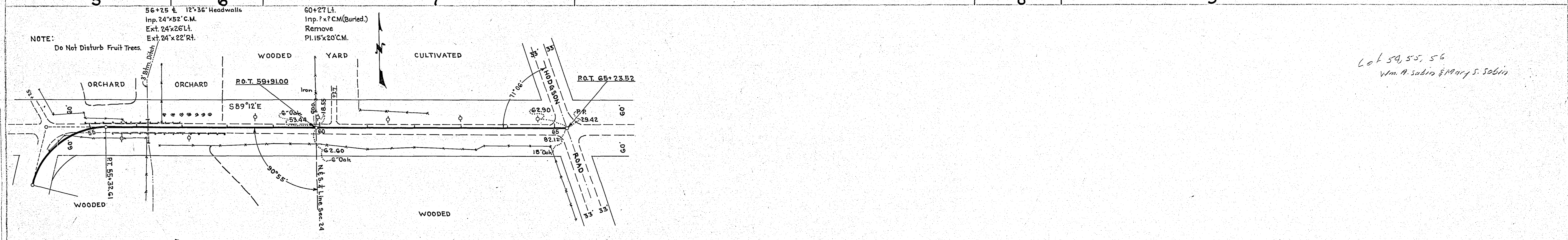
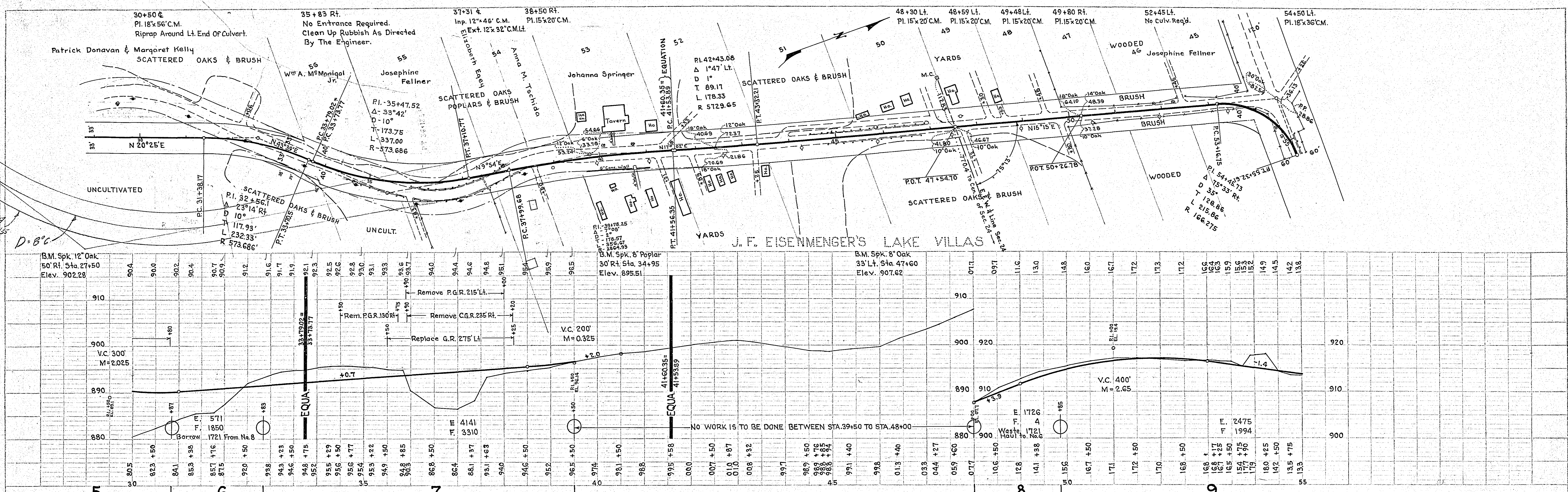
6° Curve
& Mackubin

83910
1259

Suggest
line change by R.H.
8/2/45

PLAN
NOTED
NOTE BOOK PLACEMENT CHECKED
ST. OF WAY CHECKED

PROFILE
NOTED
NOTE BOOK PLACEMENT CHECKED
ST. OF WAY CHECKED



Lot 54, 55, 56
Wm. A. Sabio & Mary S. Sabio