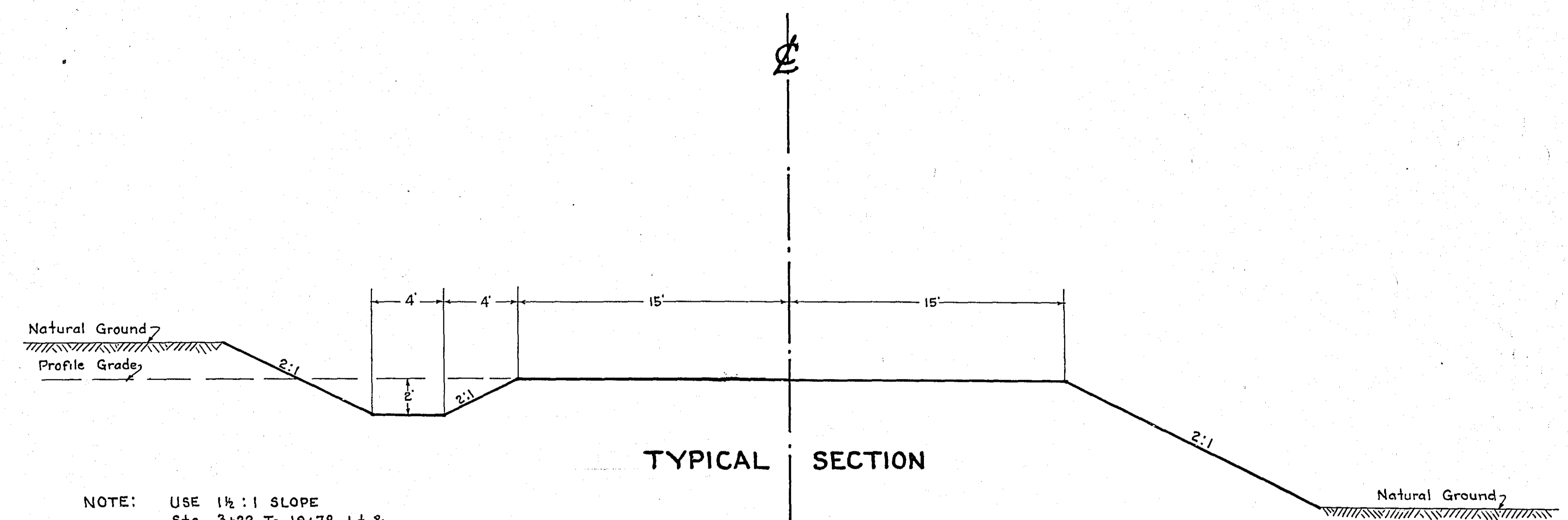


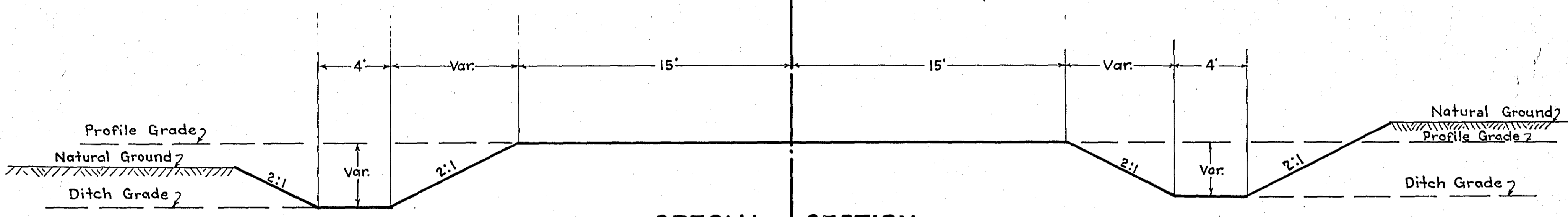
STATEMENT OF ESTIMATED QUANTITIES

CLASS	ITEM	UNIT	MILE From To	MILE From To	MILE From To	MILE From To	MILE From To	MILE From To	MILE From To	MILE From To	MILE From To	MILE From To	TOTAL ESTIMATED QUANTITIES
GRADING	1	Clearing	Trees	25									
	2	Grubbing	Trees	25									
	3	Clearing	Acres	2									
	4	Grubbing	Acres	2									
	5	Excavation Earth	Cu. Yds.	9663									
	6	Excavation Borrow	Cu. Yds.	12070									
	7	Excavation Solid Rock	Cu. Yds.										
	8	Excavation Overhaul	Cu. Yds.										
	9	Excavation Special	Cu. Yds.										
	10	Excavation Hand Ditch	Cu. Yds.	200									
	11	Install 12" C.M.	Lin. Ft.										
	12	Install 15" C.M.	Lin. Ft.	300									
	13	Install 18" C.M.	Lin. Ft.	94									
	14	Install 24" C.M.	Lin. Ft.	8									
	15	Install 30" C.M.	Lin. Ft.	20									
	16	Install	Lin. Ft.										
	17	Install 18" P3	Lin. Ft.										
	18	Install 24" P3	Lin. Ft.										
	19	Install 30" P3	Lin. Ft.										
	20	Install 36" P3	Lin. Ft.										
	21	Install	Lin. Ft.										
	22	Install	Lin. Ft.										
	23	Remove Old Culvert	Lin. Ft.	316									
	24	Replace Old Culvert	Lin. Ft.	93									
	25	Finishing	Sq. Yds.	47,700									
	26	Rubble Gutter	Cu. Yds.										
	27	Headwall Concrete	Cu. Yds.										
	28	Headwall Steel	Lbs.										
	29	Remove Fence	Lin. Ft.	550									
	30	Replace Fence	Lin. Ft.	550									
	31												
	32												
C.M. CULVERTS	1	Furnish 12" C.M.	Lin. Ft.										
	2	Furnish 15" C.M.	Lin. Ft.	300									
	3	Furnish 18" C.M.	Lin. Ft.	94									
	4	Furnish 24" C.M.	Lin. Ft.	8									
	5	Furnish 30" C.M.	Lin. Ft.	20									
P3 CULVERTS	1	Furnish 18" P3	Lin. Ft.										
	2	Furnish 24" P3	Lin. Ft.										
	3	Furnish 30" P3	Lin. Ft.										
	4	Furnish 36" P3	Lin. Ft.										
GUARD RAIL	1	Guard Rail Remove	Lin. Ft.	5330									
	2	Guard Rail Replace	Lin. Ft.	5330									
	3	Dummy Posts	Each										
	4												
SIDEWALKS AND CURBING	1	Concrete Curb - Straight	Lin. Ft.										
	2	Concrete Curb - Radius	Lin. Ft.										
	3	Remove Old Curb	Lin. Ft.										
	4	Remove Old Curb and Gutter	Lin. Ft.										
	5	Remove Old Sidewalk	Sq. Ft.										
	6	Replace Old Sidewalk	Sq. Ft.										
	7	Construct New Sidewalk	Sq. Ft.										
	8	Curb Inlet	Each										
	9	Catch Basin Complete	Each										
	10												
	11												
	12												
SEWER	1	12" Vitrified Sewer Pipe	Lin. Ft.										
	2	15" Vitrified Sewer Pipe	Lin. Ft.										
	3	18" Vitrified Sewer Pipe	Lin. Ft.										
	4	20" Vitrified Sewer Pipe	Lin. Ft.										
	5	24" Vitrified Sewer Pipe	Lin. Ft.										
	6	Manhole Complete	Each										
	7	Catch Basin Complete	Each										
SURFACE	1	Gravel On Site	Cu. Yds.	600									
	2	Hauling Gravel	C.Y. Mi.										
	3	Shaping & Compacting	Cu. Yds.										
	4	Oil	Gal.										
	5	Surface Blacktop	Sq. Yds.	15500									
	6												
STRUCTURES	1	Concrete	Cu. Yds.										
	2	Reinforcing Steel	Lbs.										
	3	Excavation	Cu. Yds.										
	4	Piling	Lin. Ft.										
	5												
	6												
	7												
	8												
	9												
	10												

DETAILS

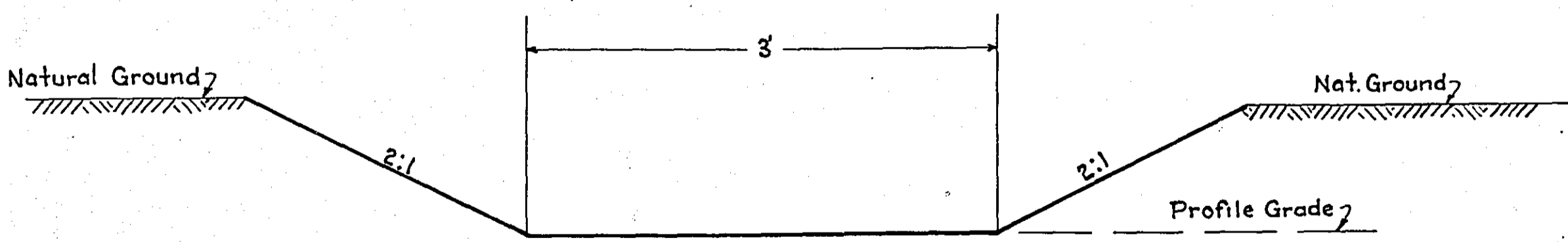


NOTE: USE 1 1/2 : 1 SLOPE
Sta. 3+22 To 19+78 L.T. &
Sta. 3+63 To 19+78 R.T.
SLOPES & BACKSLOPES TO
CONFORM TO R/W



NOTE: SLOPES & BACKSLOPES TO
CONFORM TO R/W.

NOTE: SEE SHEETS 11 & 12
FOR BORROW PIT SECTIONS



DITCH FROM WEST END OF CULVERT STATION 60+08 TO 1475' NORTHWEST.

OFFICE OF
RAMSEY COUNTY SURVEYOR
HARRY S. BRONSON
GRADING PLAN OF
CENTERVILLE RD.
FROM BIRCH LAKE BLVD. NO. TO CO. RD. 'H'
OCTOBER 1939 SCALE AS SHOWN.

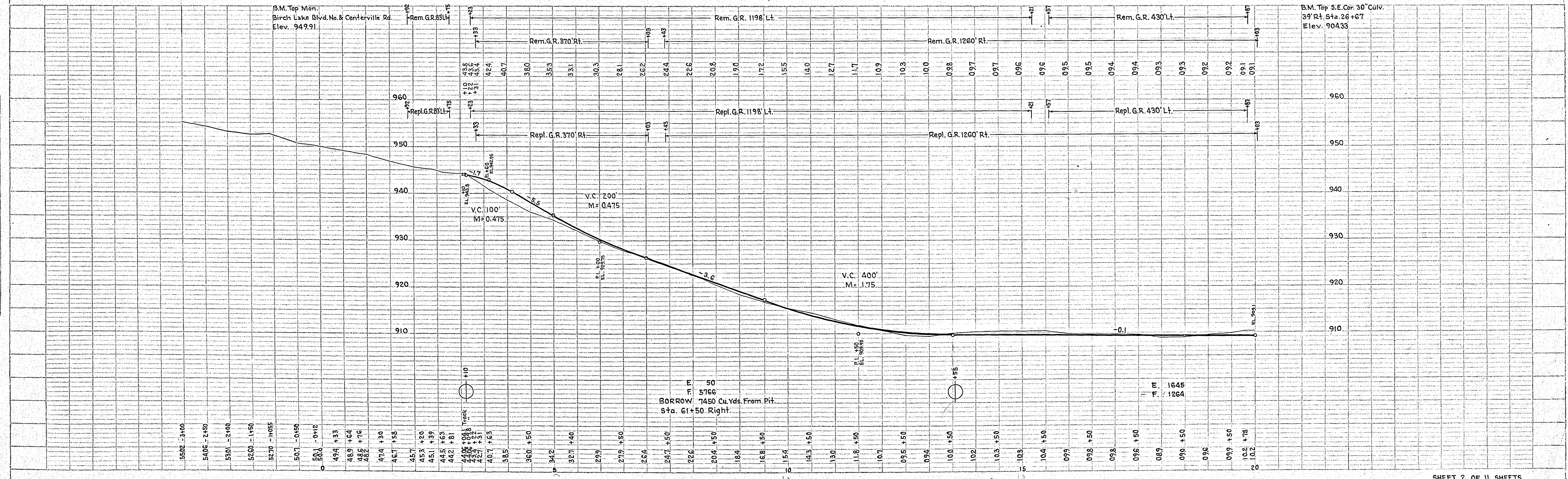
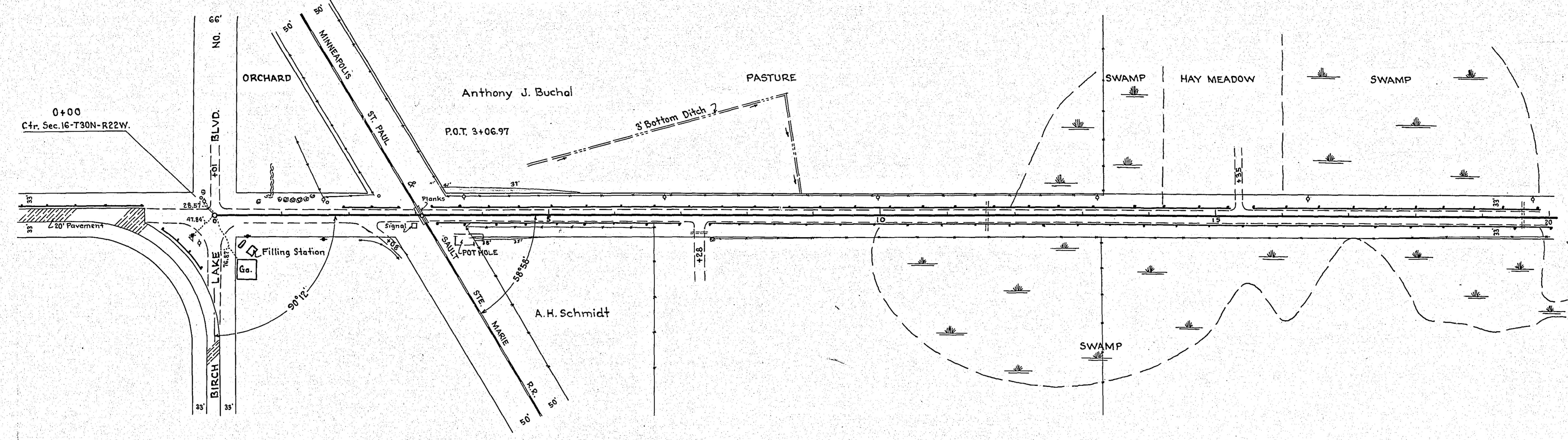
PLANS APPROVED 12/1 1939 *Harry S. Bronson*
COUNTY SURVEYOR
APPROVED 12/4 1939 *W. H. Fallon*
CHAIRMAN COUNTY BOARD

PLAN
 SURVEYED BY: []
 PLOTTED BY: []
 CHECKED BY: []
 DATE: []

PROFILE
 SURVEYED BY: []
 PLOTTED BY: []
 CHECKED BY: []
 DATE: []

7+28 Rt. Inp. 8'x26' Vt. P. Remove Pl. 15'x20'C.M.
 9+00 Lt. Pl. 15'x20'C.M.
 11+60 E. Inp. 8'x43' Vt. P. Remove Pl. 18'x44'C.M.
 15+35 Lt. Pl. 15'x20'C.M.
 19+63 E. Inp. 12'x44' Vt. P. Remove Pl. 18'x40'C.M.

NOTE: Remove & Replace Fence Sta. 3+40 To Sta. 6+00 Lt. Sta. 3+70 TO Sta. 6+60 Rt.



PLAN	DATE
BY	
NO.	
REVISIONS	
1	
2	
3	
4	
5	
6	
7	
8	
9	
10	
11	
12	
13	
14	
15	
16	
17	
18	
19	
20	
21	
22	
23	
24	
25	
26	
27	
28	
29	
30	
31	
32	
33	
34	
35	
36	
37	
38	
39	
40	
41	
42	
43	
44	
45	
46	
47	
48	
49	
50	
51	
52	
53	
54	
55	
56	
57	
58	
59	
60	
61	
62	
63	
64	
65	
66	
67	
68	
69	
70	
71	
72	
73	
74	
75	
76	
77	
78	
79	
80	
81	
82	
83	
84	
85	
86	
87	
88	
89	
90	
91	
92	
93	
94	
95	
96	
97	
98	
99	
100	

PROFILE	DATE
BY	
NO.	
REVISIONS	
1	
2	
3	
4	
5	
6	
7	
8	
9	
10	
11	
12	
13	
14	
15	
16	
17	
18	
19	
20	
21	
22	
23	
24	
25	
26	
27	
28	
29	
30	
31	
32	
33	
34	
35	
36	
37	
38	
39	
40	
41	
42	
43	
44	
45	
46	
47	
48	
49	
50	
51	
52	
53	
54	
55	
56	
57	
58	
59	
60	
61	
62	
63	
64	
65	
66	
67	
68	
69	
70	
71	
72	
73	
74	
75	
76	
77	
78	
79	
80	
81	
82	
83	
84	
85	
86	
87	
88	
89	
90	
91	
92	
93	
94	
95	
96	
97	
98	
99	
100	

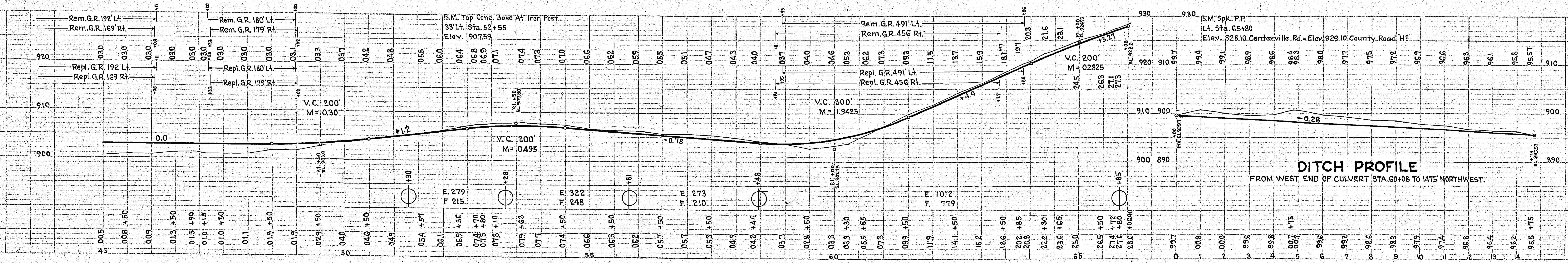
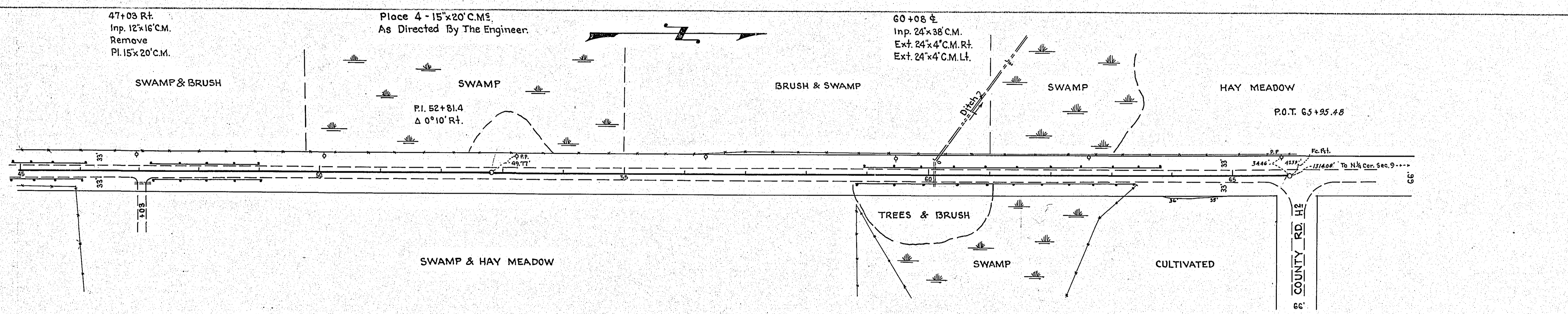
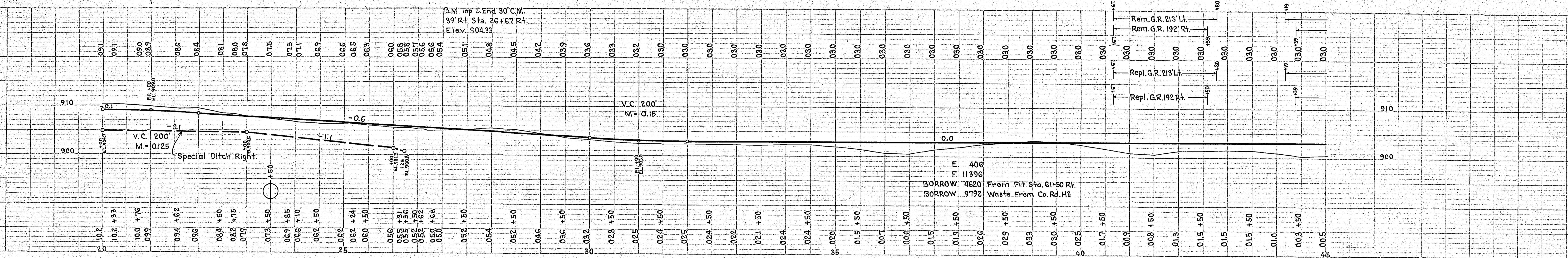
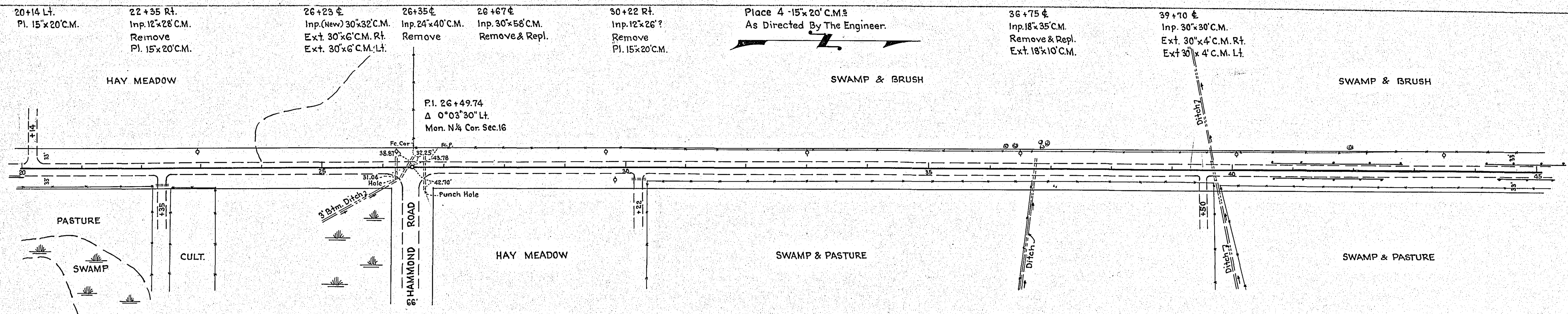


PLATE 2 - PLAN & PROFILE 3/4" = 1' & 1/4" = 1' STANDARD
 KUPPEL & ESSER CO., NEW YORK