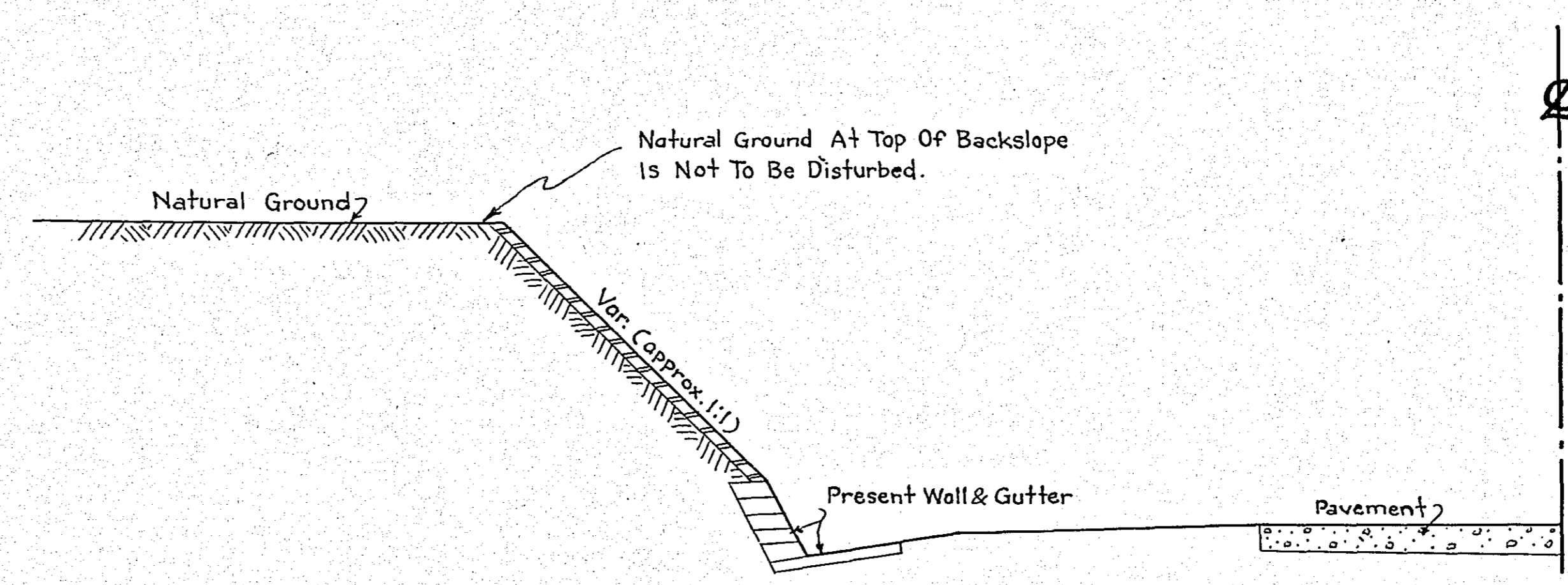
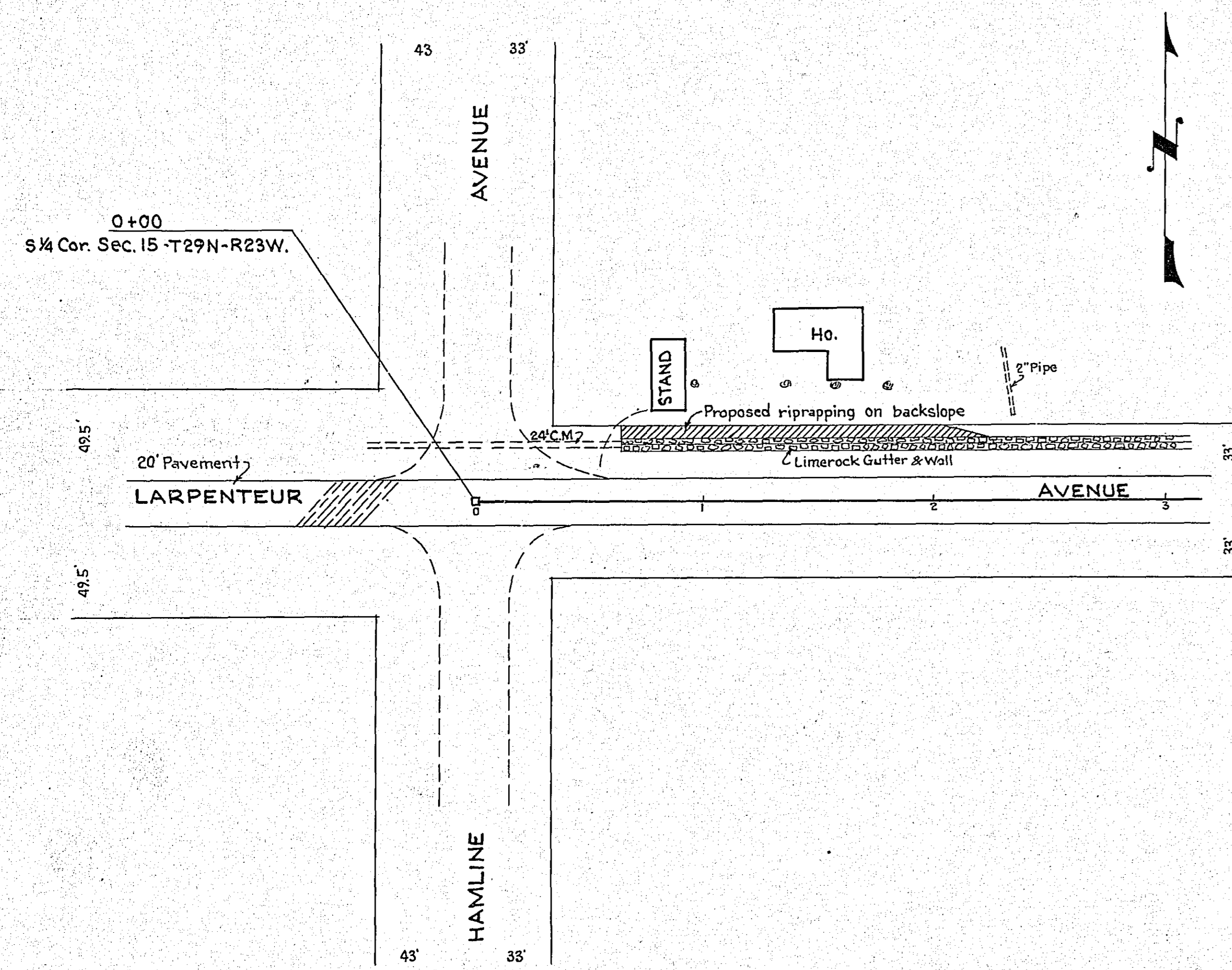


PLAN SURVEYED BY DATE
 PLOTTED BY
 ALIGNMENT CHECKED BY
 PLAN CHECKED BY
 NO. OF V.A.S. CHECKED

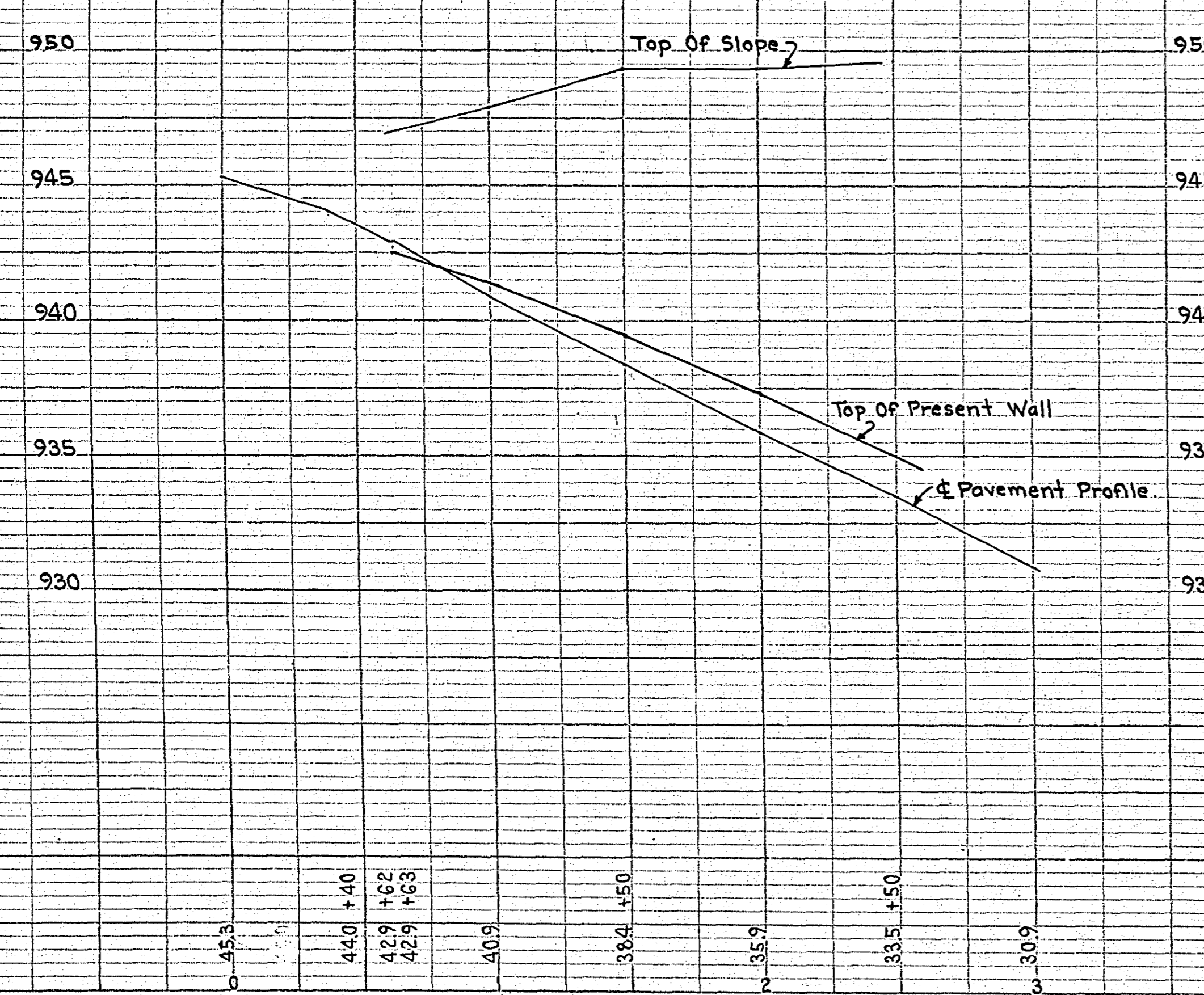
PROFILE SURVEYED BY DATE
 PLOTTED BY
 GRADES CHECKED BY
 STRUCTURE NOTATIONS CHECKED BY
 NO.



NOTE:
 Stone To Be Placed On Backslope
 From Face Of Present Wall To The Top Of Slope.
 Stone To Be Embedded In Blacktop.

TYPICAL SECTION
 STA. 0+63 TO STA. 2+25 LT.

B.M. Top Mon.
 Larpenieur & Hamline Aves.
 Elev. 945.34



ESTIMATED QUANTITIES		
Stone	Tons	32
Excavation	Cu.Yds.	25
Shaping	Sq.Yds.	215
Blacktop	Cu.Yds.	20

OFFICE OF
 RAMSEY COUNTY SURVEYOR
 HARRY S. BRONSON
 PLAN OF REVETMENT WORK
LARPENIEUR AVENUE
 FROM HAMLINE AVE. TO 300' EAST
 OCTOBER 1939 SCALE AS SHOWN

PLANS APPROVED 10/17/1939 *Harry S. Bronson*
 COUNTY SURVEYOR