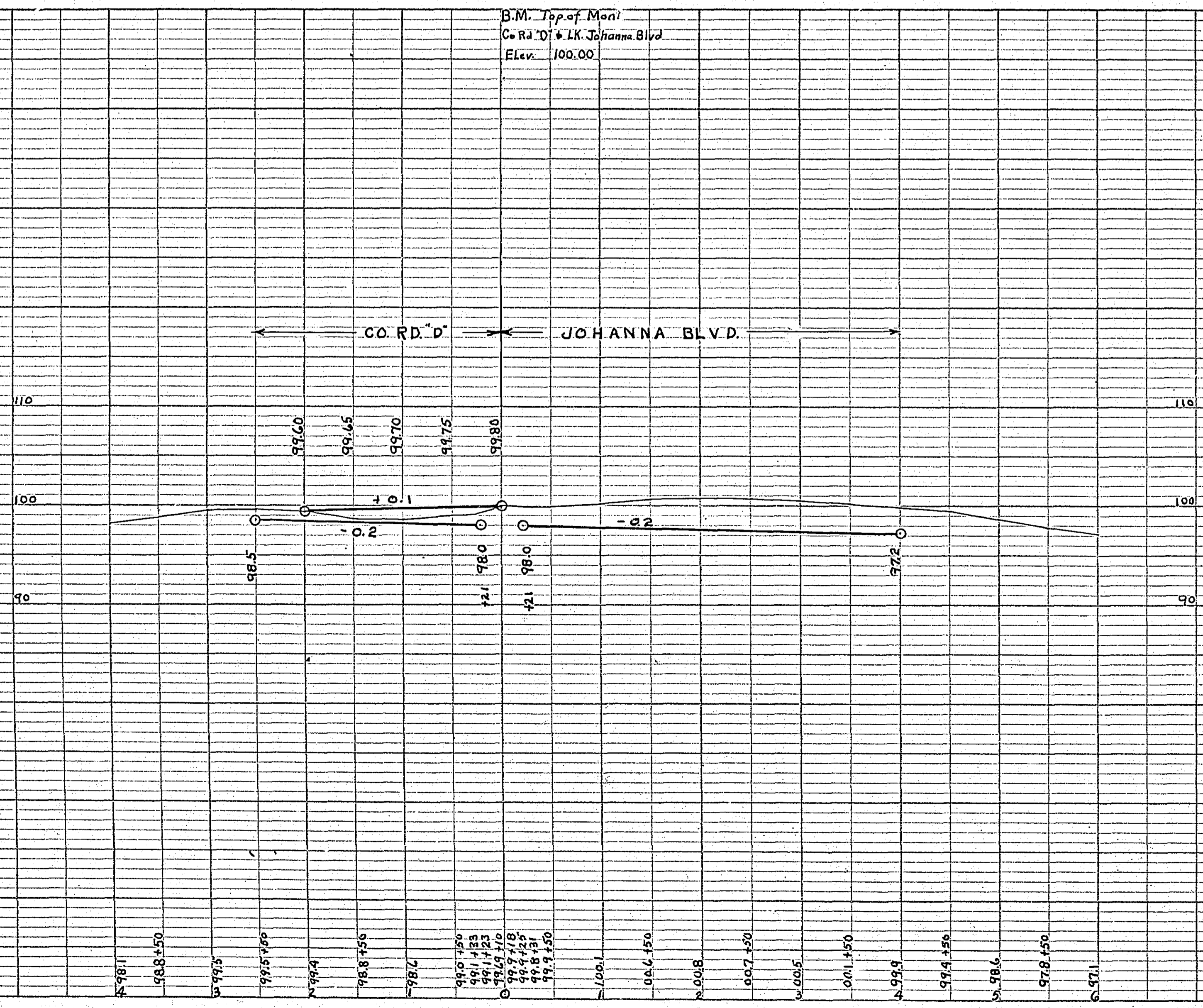
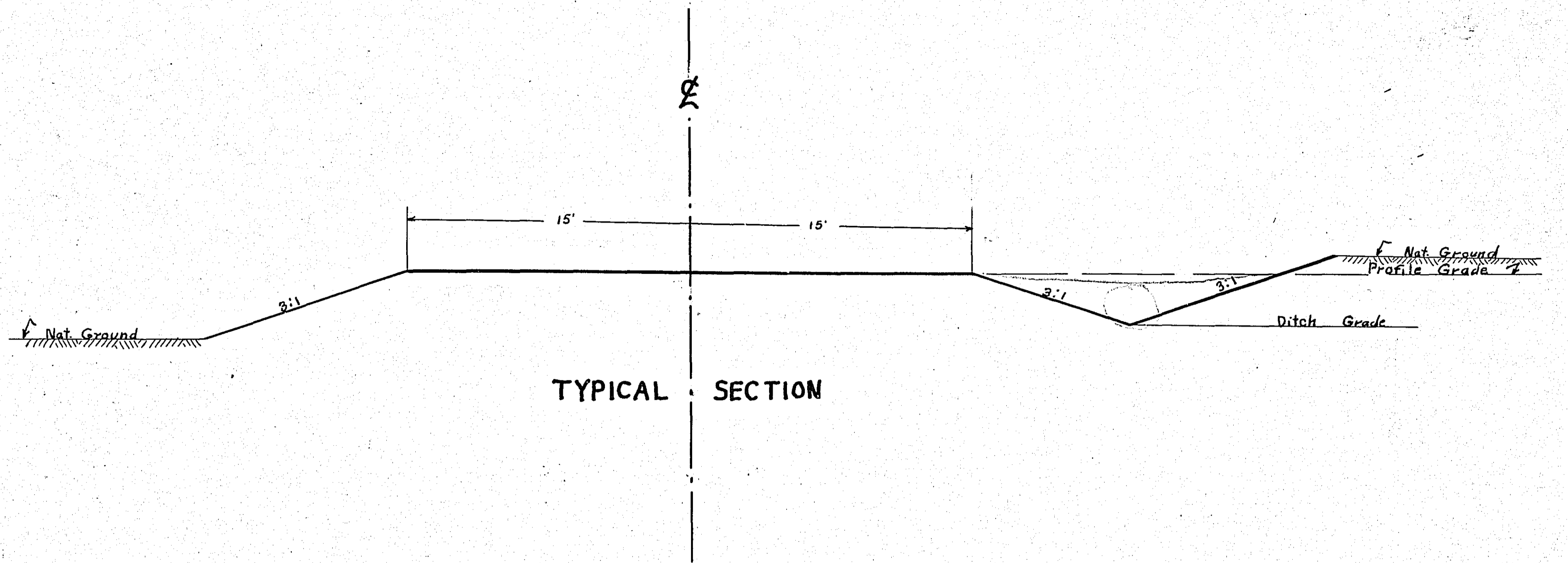
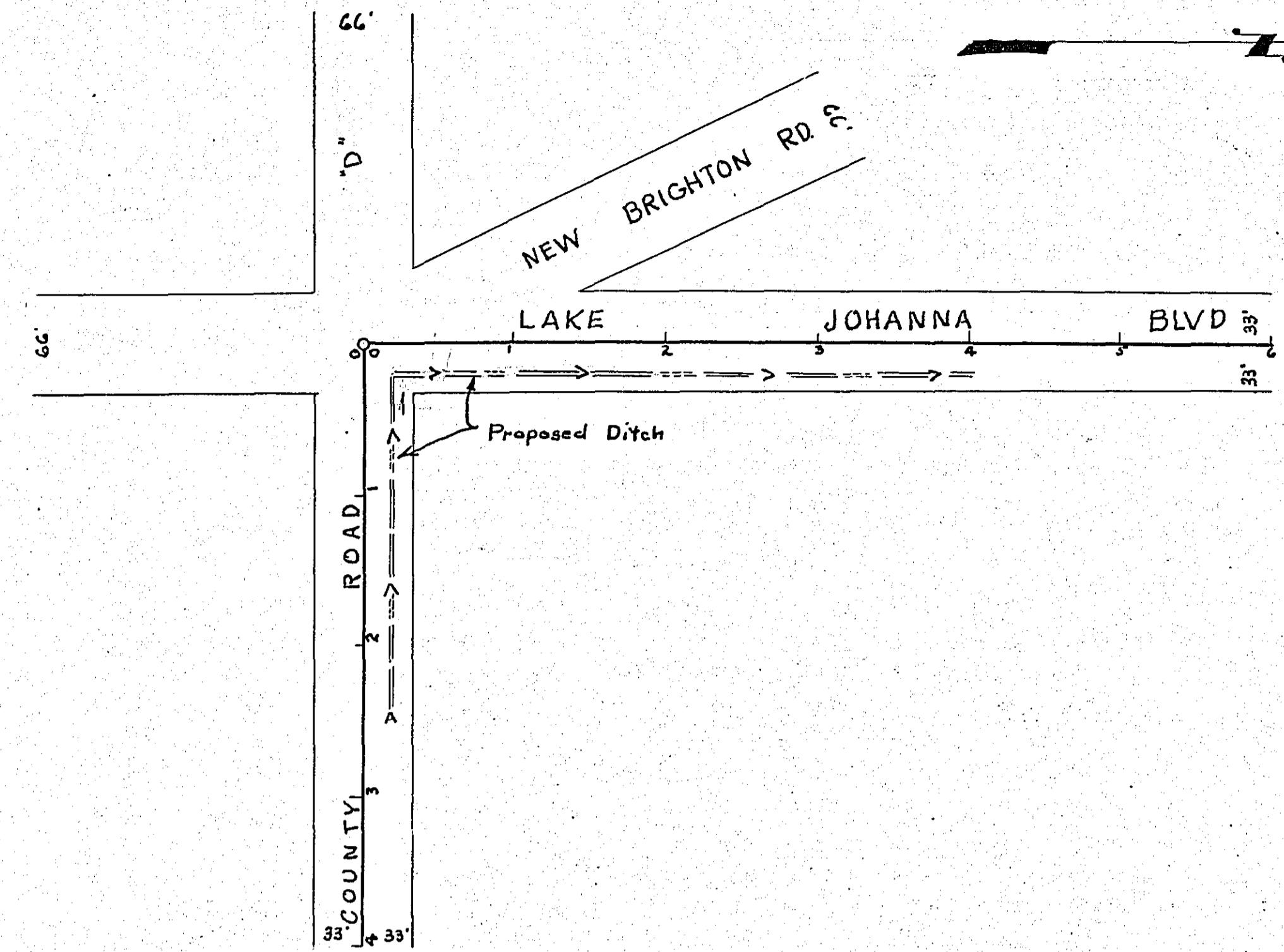


PLAN	SURVEYED	DATE
NOTE BOOK NO.	PLOTTED	BY
	ALIGNMENT CHECKED	
	RT. OF WAY CHECKED	

PROFILE	SURVEYED	DATE
NOTE BOOK NO.	GRADES CHECKED	BY
	B. M.S. NOTED	
	STRUCTURE NOTATIONS CHECKED	



ESTIMATED QUANTITIES
Excavation Cu.Yds. 200

OFFICE OF
RAMSEY COUNTY SURVEYOR
HARRY S. BRONSON
DRAINAGE PLAN
CO. RD. 'D' & LAKE JOHANNA BLVD.
OCT. 1939. SCALE AS SHOWN

PLANS APPROVED 10/5 1939 *Harry S. Bronson*
COUNTY SURVEYOR

PLAN	BY	DATE
SUBMITTED		
FLIPPED		
ALIGNMENT CHECKED		
RT. OF WAY CHECKED		
NO.		

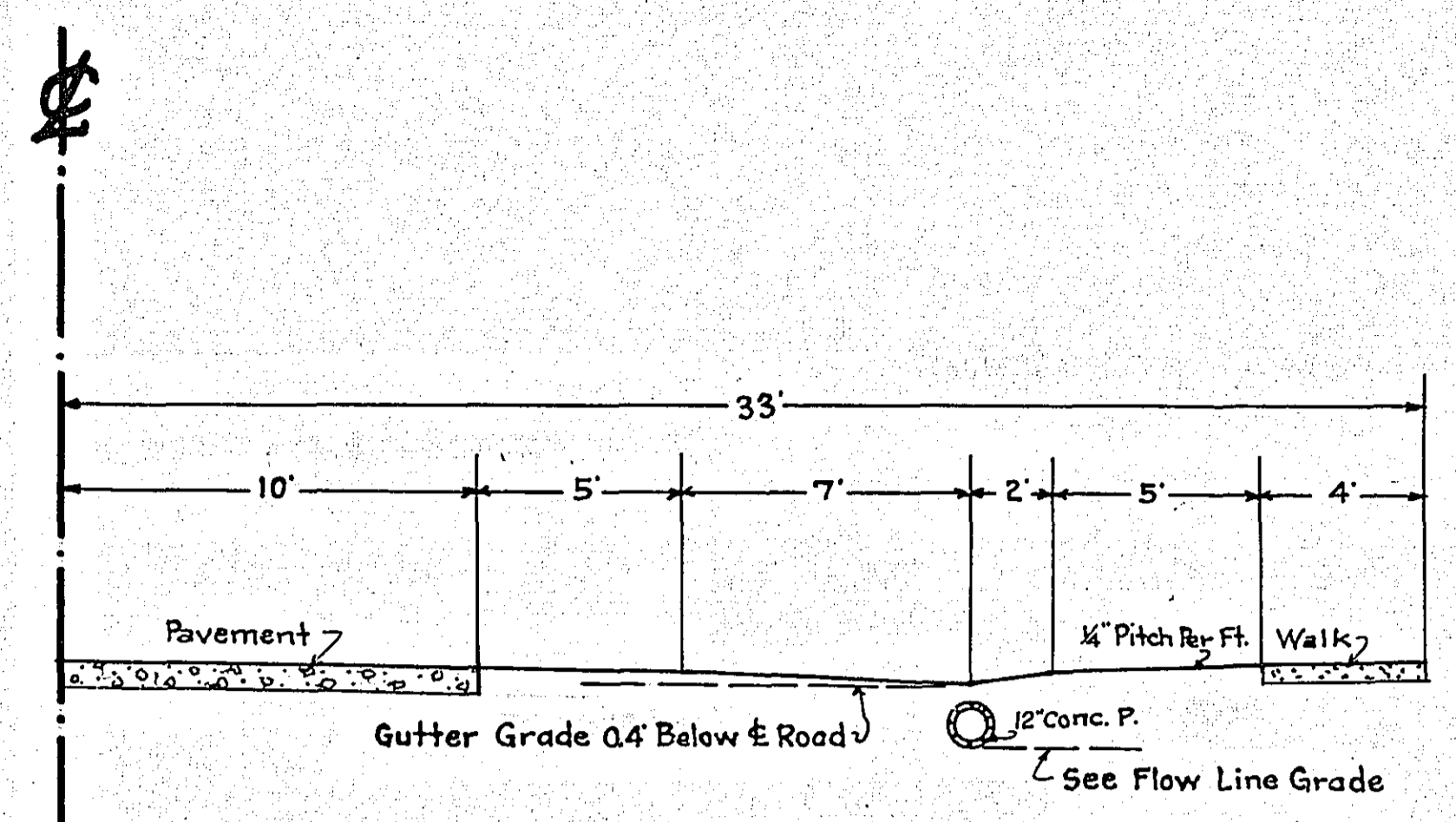
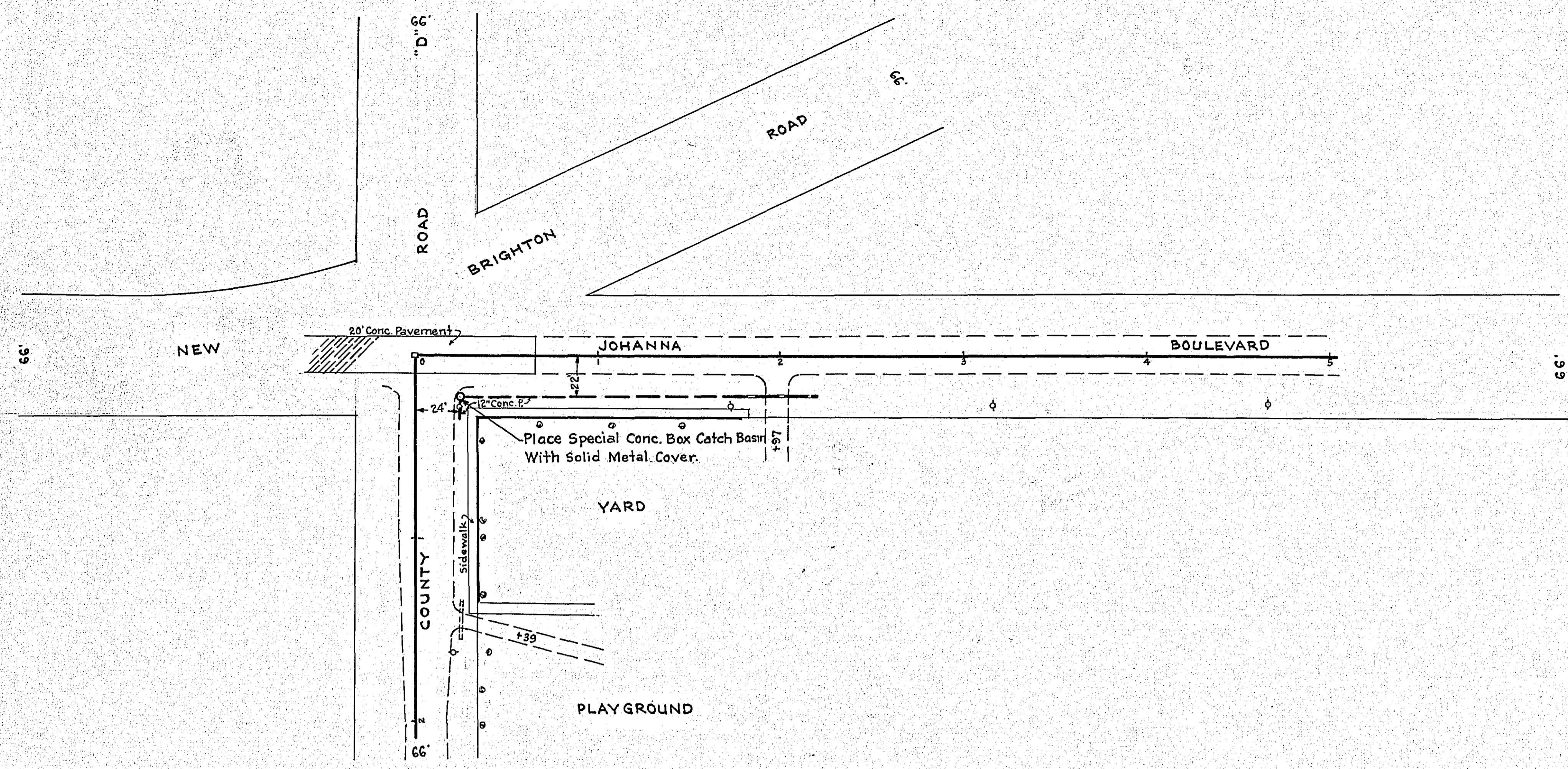
PROFILE	BY	DATE
SUBMITTED		
FLIPPED		
GRADES CHECKED		
STRUCTURE NOTATION CHECKED		
NO.		

1+39 Lt. (Co. Rd. D)
Inp. 12"x20" C.M.
O.K. Leave

0+24 Rt. Joh. Blvd.
Pl. 12"x12" Conc. P.
To Be Connected To C.B.

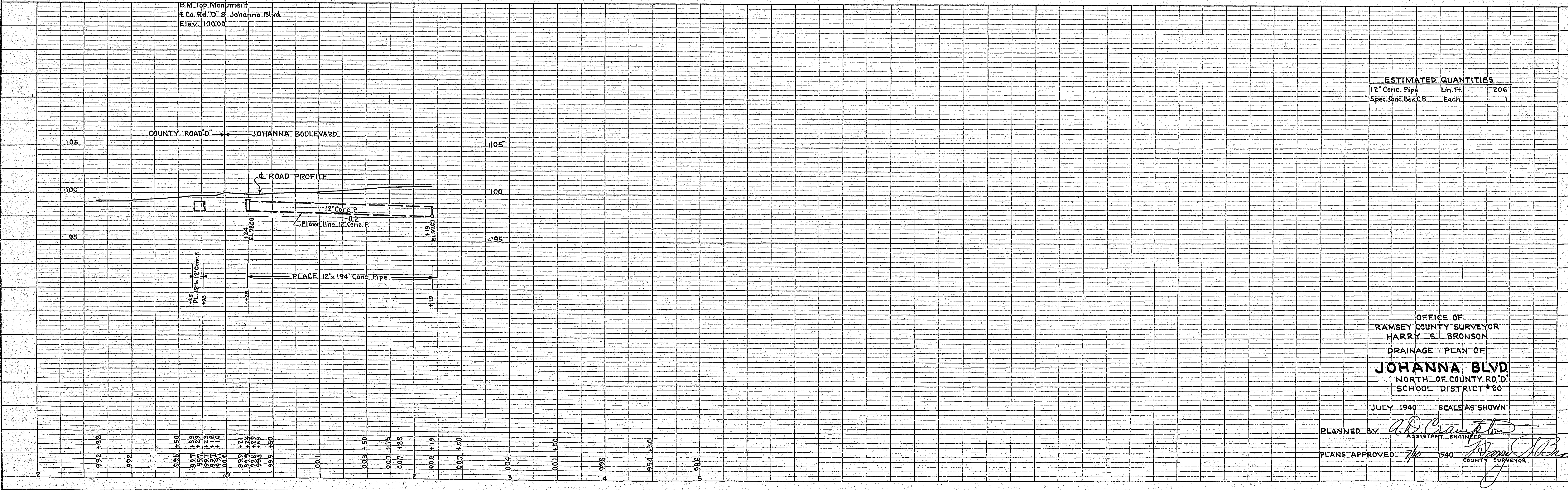
1+97 Rt. Johanna Blvd.
Inp. 15"x44" C.M.
Remove

0+24 To 2+19 Rt. (J.B.)
Place 194"x12" Conc. P.



TYPICAL SECTION
JOHANNA BLVD. RIGHT SIDE ONLY.
STA. 0+25 TO STA. 2+19

B.M. Top Monument
at Co. Rd. D & Johanna Blvd.
Elev. 100.00



ESTIMATED QUANTITIES

12" Conc. Pipe	Lin. Ft.	206
Spec. Conc. Box C.B.	Each.	1

OFFICE OF
RAMSEY COUNTY SURVEYOR
HARRY S. BRONSON
DRAINAGE PLAN OF
JOHANNA BLVD.
NORTH OF COUNTY RD. D
SCHOOL DISTRICT #20

JULY 1940 SCALE AS SHOWN

PLANNED BY *A.D. Crawford*
ASSISTANT ENGINEER

PLANS APPROVED *[Signature]* 1940
COUNTY SURVEYOR