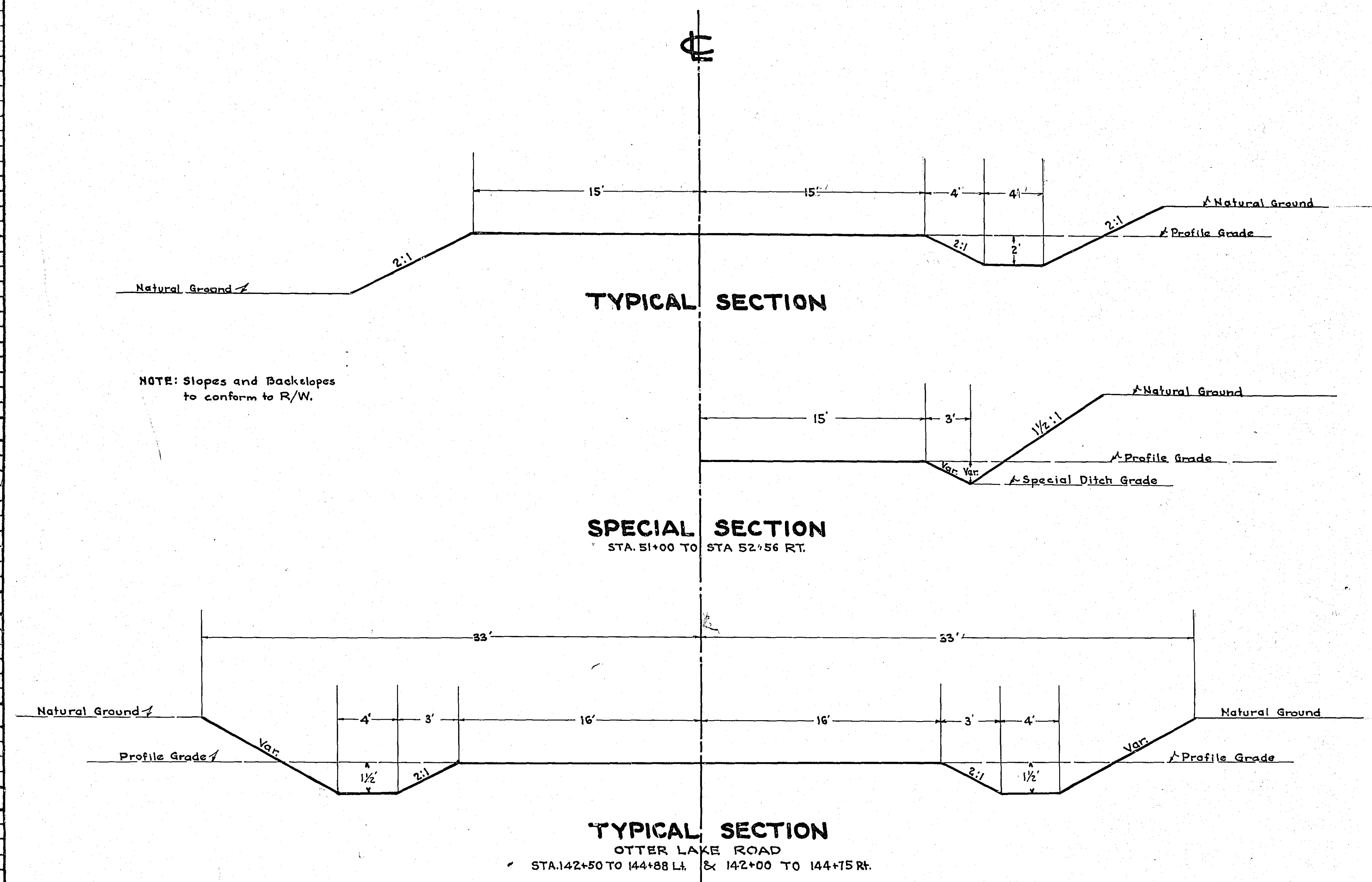


STATEMENT OF ESTIMATED QUANTITIES

CLASS	ITEM	UNIT	MILE From To	MILE From To	MILE From To	MILE From To	MILE From To	MILE From To	MILE From To	MILE From To	MILE From To	MILE From To	TOTAL ESTIMATED QUANTITIES
GRADING	1	Clearing	Trees	65									
	2	Grubbing	Trees	65									
	3	Clearing	Acres										
	4	Grubbing	Acres										
	5	Excavation Earth	Cu. Yds.	24988									
	6	Excavation Loose Rock	Cu. Yds.										
	7	Excavation Solid Rock	Cu. Yds.										
	8	Excavation Overhaul	Cu. Yds.										
	9	Excavation Special	Cu. Yds.										
	10	Excavation Hand Ditch	Cu. Yds.										
	11	Install 12" C.M.	Lin. Ft.										
	12	Install 15" C.M.	Lin. Ft.	626									
	13	Install 18" C.M.	Lin. Ft.	192									
	14	Install 24" C.M.	Lin. Ft.										
	15	Install	Lin. Ft.										
	16	Install	Lin. Ft.										
	17	Install 18" Ps	Lin. Ft.										
	18	Install 24" Ps	Lin. Ft.										
	19	Install 30" Ps	Lin. Ft.										
	20	Install 36" Ps	Lin. Ft.										
	21	Install	Lin. Ft.										
	22	Install	Lin. Ft.										
	23	Remove Old Culvert	Lin. Ft.	286									
	24	Replace Old Culvert	Lin. Ft.	170									
	25	Finishing	Sq. Yds.	64000									
	26	Rubble Gutter	Cu. Yds.										
	27	Headwall Concrete	Cu. Yds.										
	28	Headwall Steel	Lbs.										
	29	Rem. Fence	Lin. Ft.	2900									
	30	Repl. Fence	" "	2900									
	31												
	32												
C.M. CULVERTS	1	Furnish 12" C.M.	Lin. Ft.										
	2	Furnish 15" C.M.	Lin. Ft.	626									
	3	Furnish 18" C.M.	Lin. Ft.	192									
	4	Furnish 24" C.M.	Lin. Ft.										
	5	Furnish	Lin. Ft.										
	6	Furnish	Lin. Ft.										
	7	Furnish 12" C.M. Band	Each										
	8	Furnish 15" C.M. Band	Each										
	9												
	10												
P <sub>3</sub> CULVERTS	1	Furnish 18" P <sub>3</sub>	Lin. Ft.										
	2	Furnish 24" P <sub>3</sub>	Lin. Ft.										
	3	Furnish 30" P <sub>3</sub>	Lin. Ft.										
	4	Furnish 36" P <sub>3</sub>	Lin. Ft.										
	5												
	6												
GUARD RAIL	1	Guard Rail - Cable	Lin. Ft.										
	2	Guard Rail Anchors	Each										
	3	Dummy Posts	Each										
	4												
SIDEWALKS AND CURBING	1	Concrete Curb - Straight	Lin. Ft.										
	2	Concrete Curb - Radius	Lin. Ft.										
	3	Remove Old Curb	Lin. Ft.										
	4	Remove Old Curb and Gutter	Lin. Ft.										
	5	Remove Old Sidewalk	Sq. Ft.										
	6	Replace Old Sidewalk	Sq. Ft.										
	7	Construct New Sidewalk	Sq. Ft.										
	8	Curb Inlet	Each										
	9	Catch Basin Complete	Each										
	10												
	11												
	12												
SEWER	1	12" Vitrified Sewer Pipe	Lin. Ft.										
	2	15" Vitrified Sewer Pipe	Lin. Ft.										
	3	18" Vitrified Sewer Pipe	Lin. Ft.										
	4	20" Vitrified Sewer Pipe	Lin. Ft.										
	5	24" Vitrified Sewer Pipe	Lin. Ft.										
	6	Manhole Complete	Each										
	7	Catch Basin Complete	Each										
8													
9													
10													
SURFACE	1	Gravel on Site	Cu. Yds.	750									
	2	Hauling Gravel	C.Y. MI.										
	3	Shaping & Compacting	Cu. Yds.										
	4	Oil Stabilization	Sq. Yds.	19500									
	5	Cut-back	Sq. Yds.										
	6												
7													
8													
STRUCTURES	1	Concrete	Cu. Yds.										
	2	Reinforcing Steel	Lbs.										
	3	Excavation	Cu. Yds.										
	4	Piling	Lin. Ft.										
	5												
	6												
	7												
	8												
	9												
	10												

DETAILS



OFFICE OF  
 RAMSEY COUNTY SURVEYOR  
 HARRY S. BRONSON  
 GRADING PLAN OF  
**COUNTY ROAD "H2"**  
 FROM CENTERVILLE RD. TO BALD EAGLE BLVD. W.  
 SEPT. 1939 SCALE AS SHOWN

PLANS APPROVED 9/23/1939 *Harry S. Bronson*  
 COUNTY SURVEYOR  
 APPROVED 10/1/1939 *W. H. Jellison*  
 CHAIRMAN COUNTY BOARD



**OTTER LAKE ROAD**  
 141+96 Rt. 143+92 Lt.  
 Inp. 15'x20' C.M. Inp. 15'x20' C.M.  
 Rem. & Repl. Rem. & Repl.

59+56 Rt.  
 Pl. 15'x20' C.M.

63+36 Lt.  
 No Culv. Req'd.

64+86 Rt.  
 Inp. 12'x26' C.M.  
 Rem. & Repl.

65+95 Lt.  
 Pl. 15'x20' C.M.

66+39 Rt.  
 Pl. 15'x20' C.M.

NOTE: Pl. 6-15'x20' C.M.  
 as directed by the Engr.

74+50 Lt.  
 Pl. 18'x52' C.M.

75+20 Rt.  
 Inp. 6"x3" Drain Tile  
 Ext. as dir. by Engr.

76+28 Rt. 78+80 Lt.  
 Pl. 15'x20' C.M. Inp. 12'x42' C.M.  
 Rem. & Repl. Rem. & Repl.

80+56 Rt.  
 Inp. ? x ? Culv.

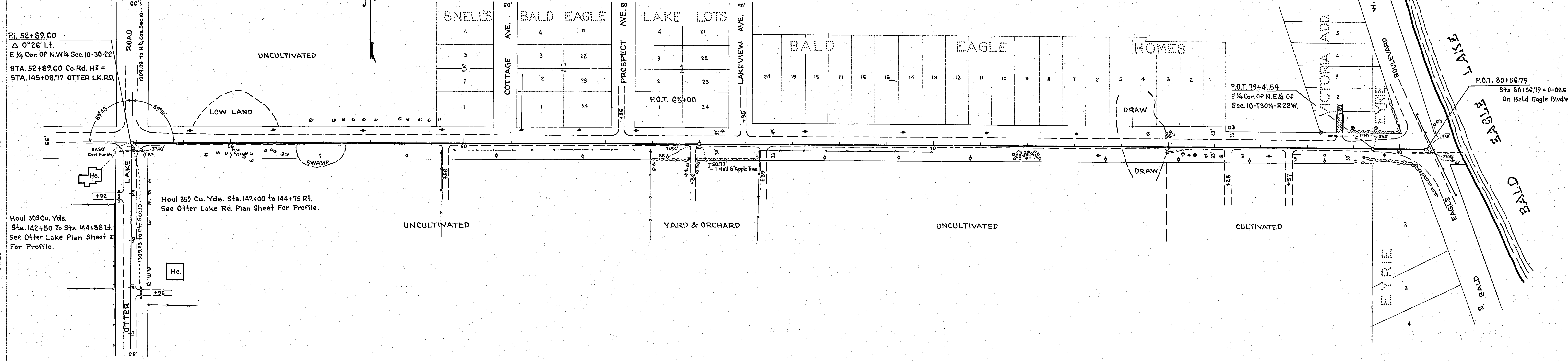
77+57 Rt.  
 No Culv. Req'd.

DATE	
BY	
SUBMITTED	
APPROVED	
NOTE BOOK	
ADJUSTMENT CHECKED	
RT. OF WAY CHECKED	
NO.	

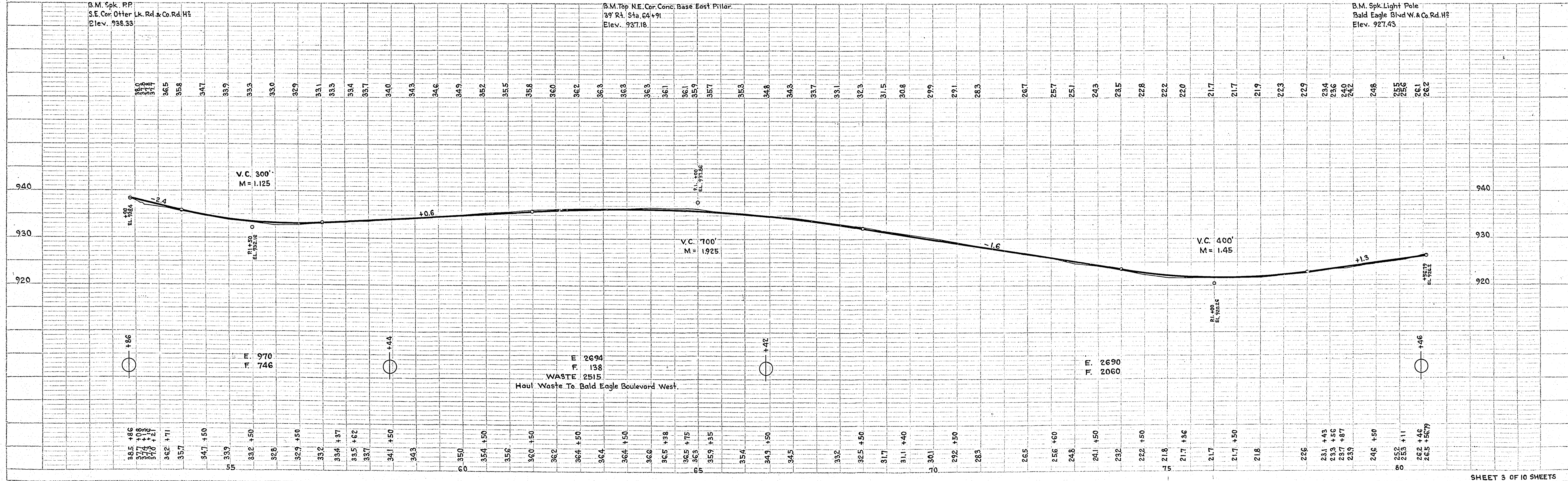
Pl. 52+89.60  
 Δ 0°26' Lt.  
 E 1/4 Cor. Of N.W. 1/4 Sec. 10-30-22  
 STA. 52+89.60 Co. Rd. H<sub>2</sub> =  
 STA. 145+08.77 OTTER LK. RD.

Haul 309 Cu. Yds.  
 Sta. 142+50 To Sta. 144+88 Lt.  
 See Otter Lake Plan Sheet  
 For Profile.

Haul 359 Cu. Yds. Sta. 142+00 to 144+75 Rt.  
 See Otter Lake Rd. Plan Sheet For Profile.



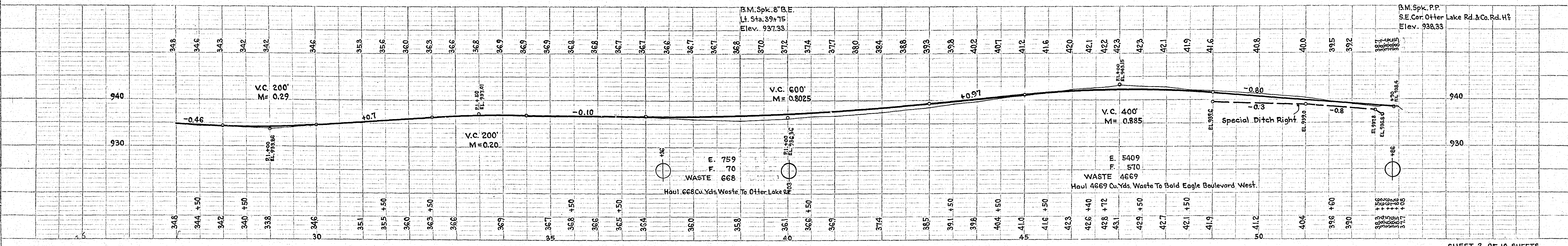
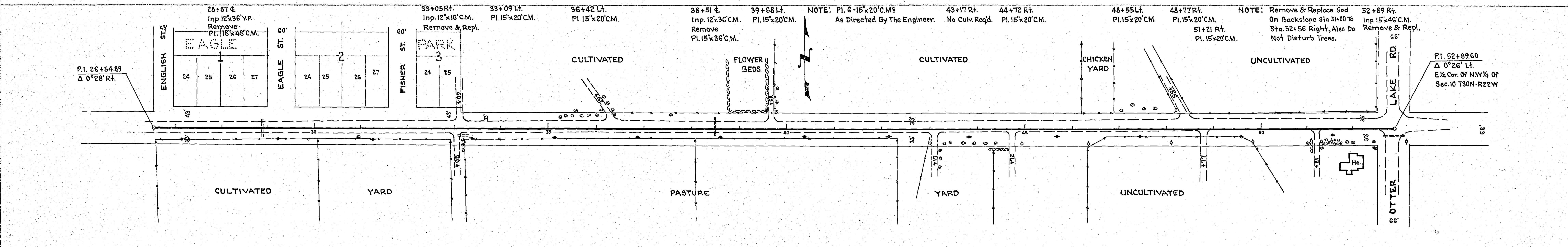
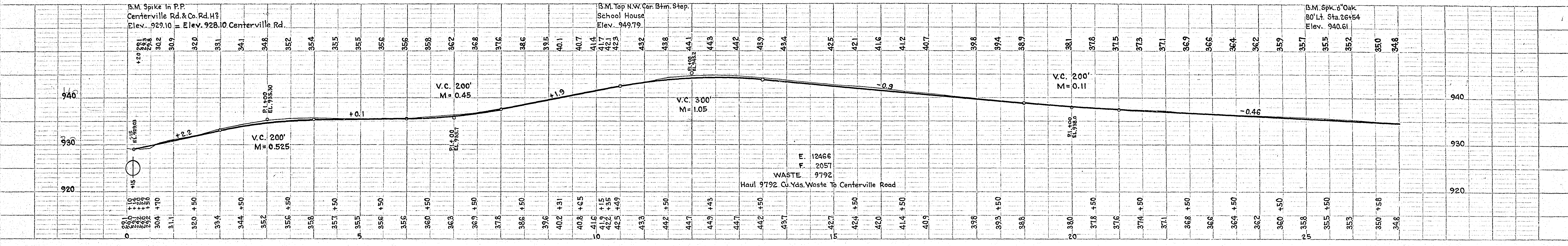
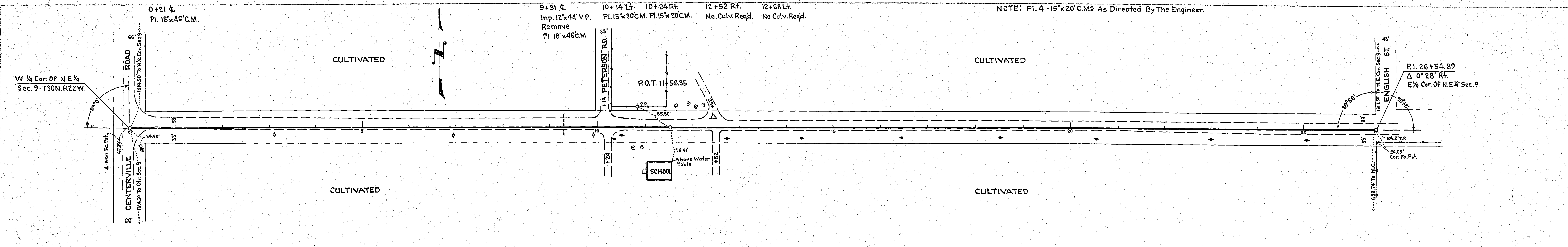
DATE	
BY	
SUBMITTED	
APPROVED	
NOTE BOOK	
ADJUSTMENT CHECKED	
STRUC. DIMENSIONS CHECKED	
NO.	





DATE	
BY	
REVISIONS	
1. PLAN CHECKED	
2. PROFILE CHECKED	
3. AS BUILT CHECKED	
4. FIELD CHECKED	

DATE	
BY	
REVISIONS	
1. PROFILE CHECKED	
2. AS BUILT CHECKED	
3. FIELD CHECKED	

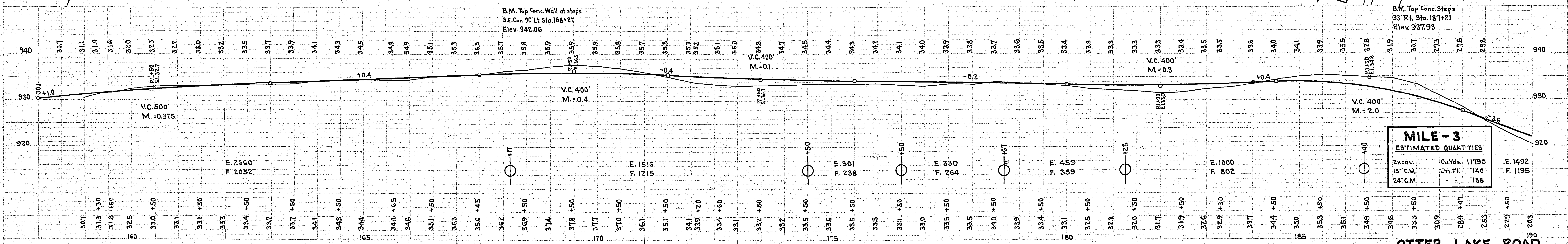
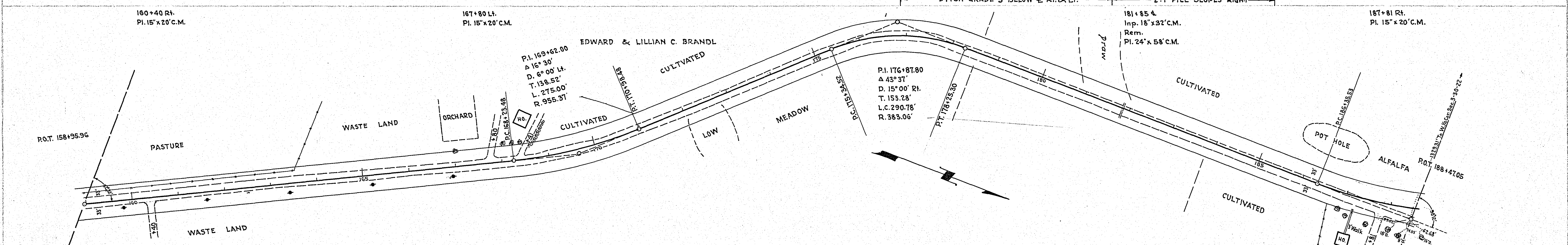
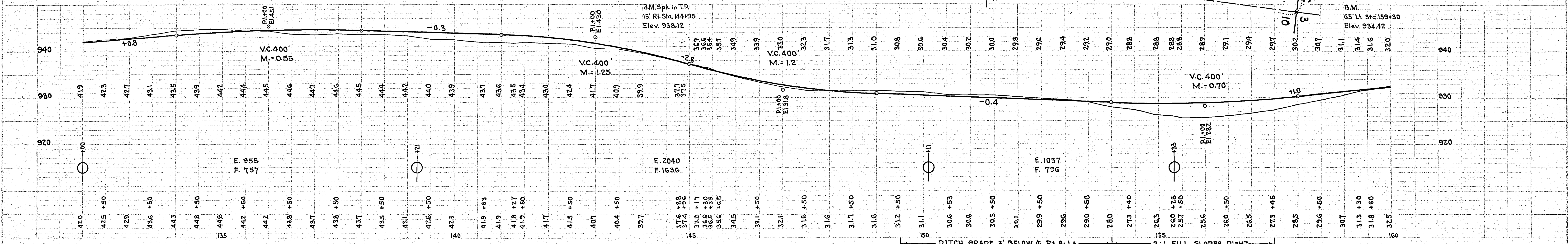
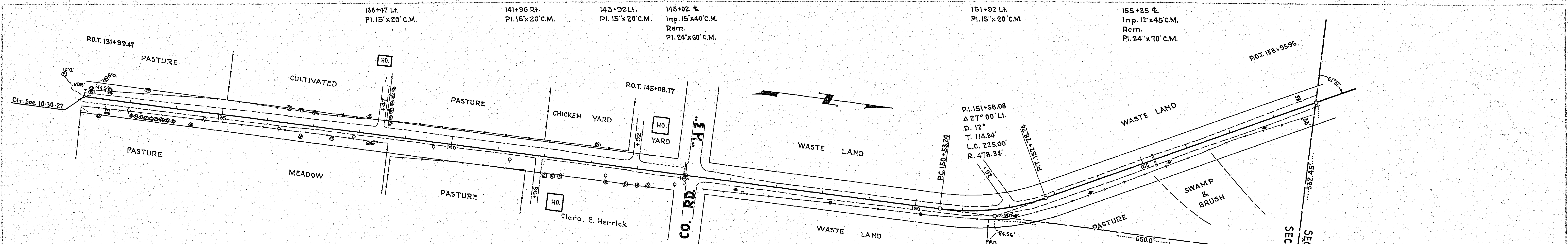


NOTE: PI. 4 -15°x20' C.M. As Directed By The Engineer.

NOTE: PI. 6-15°x20' C.M. As Directed By The Engineer.

NOTE: Remove & Replace Sod On Backslope Sta 51+00 To Sta. 52+56 Right, Also Do Not Disturb Trees.





MILE - 3 ESTIMATED QUANTITIES		
Excav.	Cu Yds.	11790
15" C.M.	Lin. Ft.	140
24" C.M.		188

OTTER LAKE ROAD