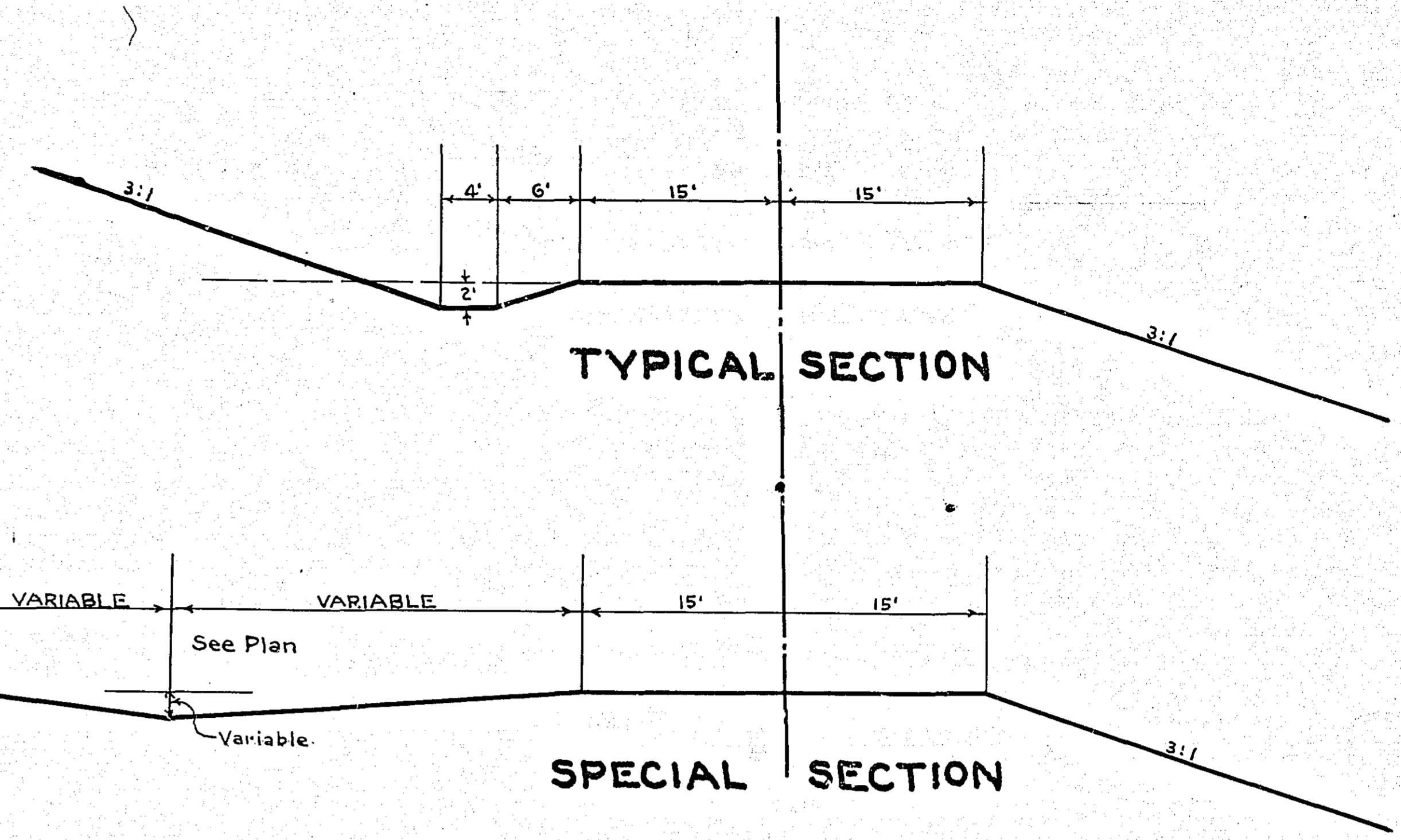
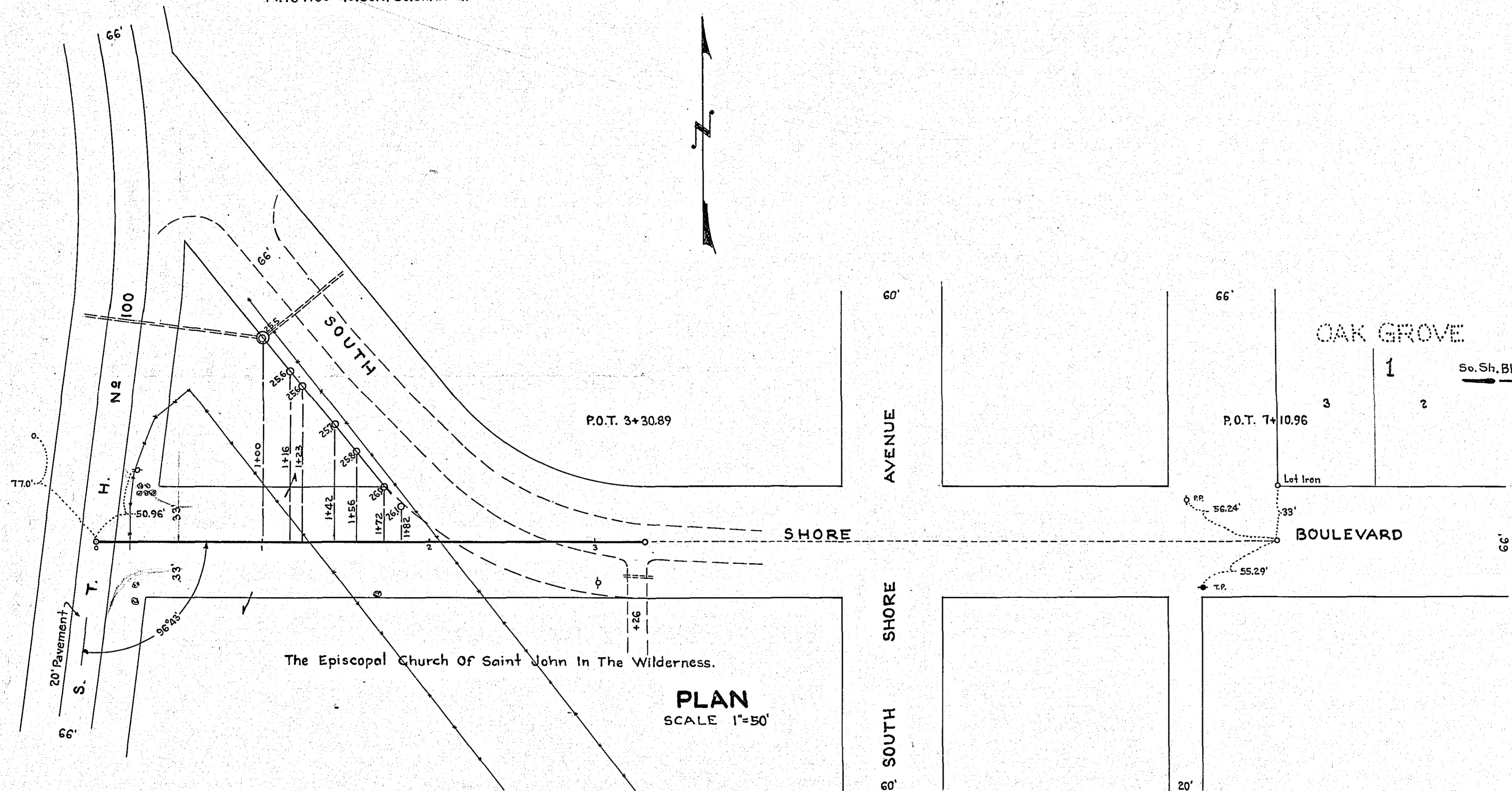


1+00 Lt.
Pl. Catch Basin Type 2
Pl. 18" X 110" S.C. Culv. S.T.H. 100
Pl. 18" X 60" S.C. Culv. So. Sh. Blvd.

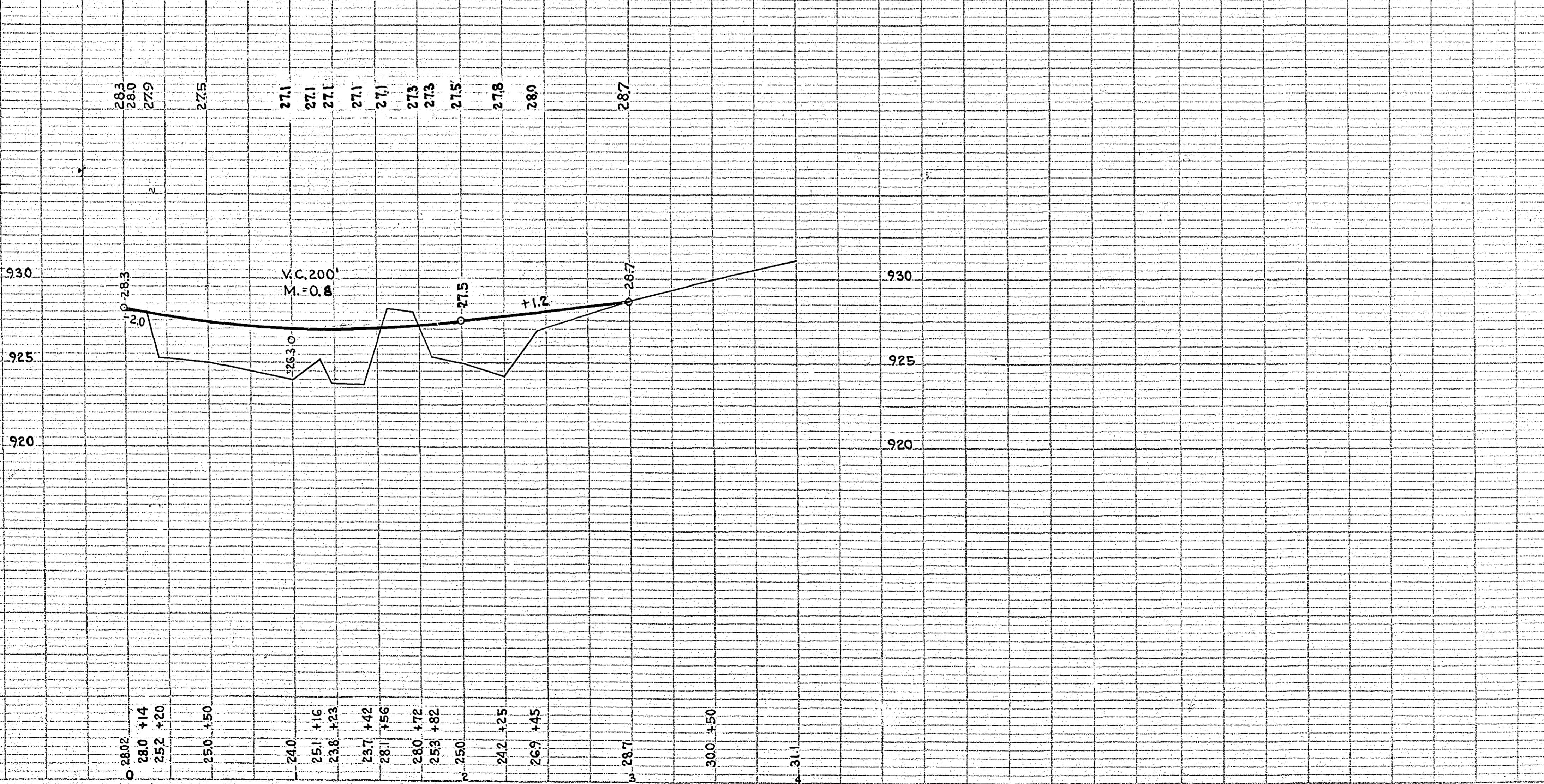
3+26 Rt.
Inp. 12" X 24" CM.



DATE	
BY	
SURVEYED	
NOTE BOOK	
ALIGNED CHECKED	
RET. OF WAY CHECKED	
NO.	

DATE	
BY	
SURVEYED	
NOTE BOOK	
GRADES CHECKED	
B.M. > NOTED	
STRUCTURE NOTED	
NO.	

B.M. Drill-hole in pavement
Sta. 0+00
Elev. 928.02



QUANTITIES		
Clearing	Trees	5
Grubbing	"	5
Excavation	Cu. Yds.	495
Borrow	"	2415
Furnish 18" S.C. Culv.	Lin. Ft.	170
Furnish M.H. Brick	M.	0.4
Furnish Cement	Bbls.	1.0
Furnish Sand	Cu. Yds.	2
Finishing	Sq. Yds.	4000
Gravel on site	Cu. Yds.	150
Surface Black-Top	Sq. Yds.	2200
Catch basin frames & covers	Each	2

OFFICE OF
RAMSEY COUNTY SURVEYOR
HARRY S. BRANSON
GRADING PLAN OF
SOUTH SHORE BLVD. & S.T.H. NO. 100
CONNECTION

SCALE AS SHOWN SEPT. 1939

APPROVED 9/6 19 *Harry S. Branson*
COUNTY SURVEYOR