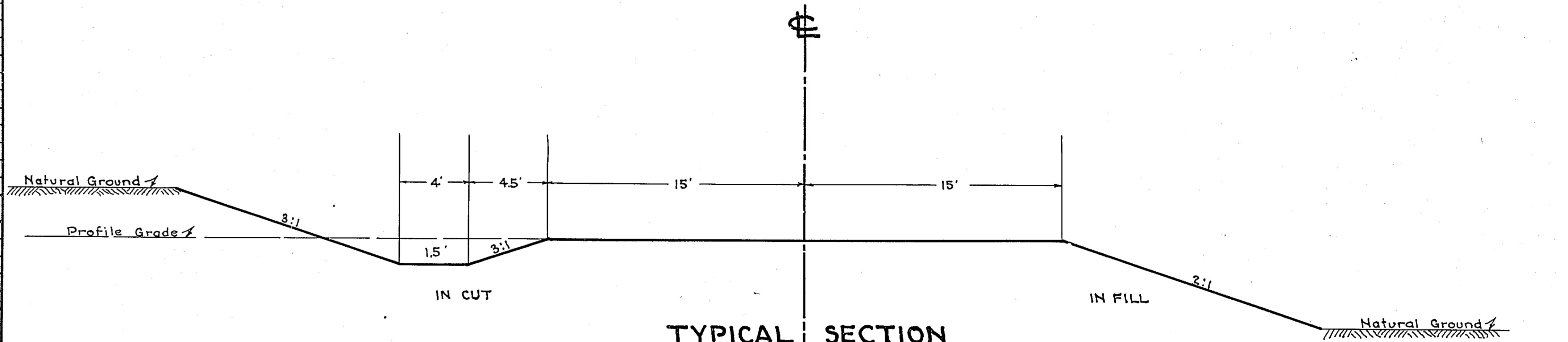


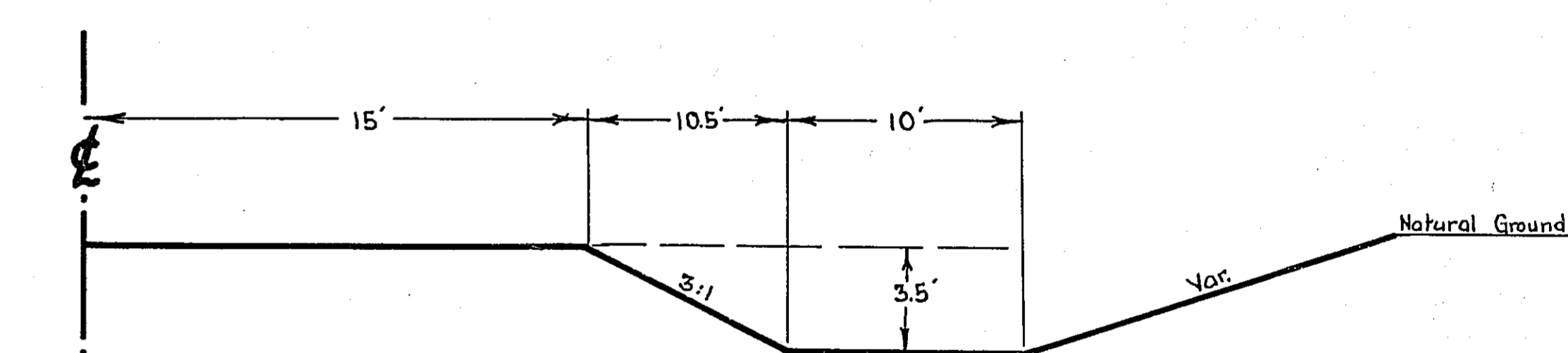
STATEMENT OF ESTIMATED QUANTITIES

CLASS	ITEM	UNIT	MILE From To	MILE From To	MILE From To	MILE From To	MILE From To	MILE From To	MILE From To	MILE From To	MILE From To	MILE From To	TOTAL ESTIMATED QUANTITIES
GRADING	1	Clearing	Trees										
	2	Grubbing	Trees										
	3	Clearing	Acres										
	4	Grubbing	Acres										
	5	Excavation Earth	Cu. Yds.	55	31								
	6	Excavation Loose Rock	Cu. Yds.										
	7	Excavation Solid Rock	Cu. Yds.										
	8	Excavation Overhaul	Cu. Yds.										
	9	Excavation Special	Cu. Yds.										
	10	Excavation Hand Ditch	Cu. Yds.										
	11	Install 12" C.M.	Lin. Ft.										
	12	Install 15" C.M.	Lin. Ft.										
	13	Install 18" C.M.	Lin. Ft.										
	14	Install 24" C.M.	Lin. Ft.										
	15	Install 48" C.M.	Lin. Ft.	40									
	16	Install	Lin. Ft.										
	17	Install 18" Ps	Lin. Ft.										
	18	Install 24" Ps	Lin. Ft.										
	19	Install 30" Ps	Lin. Ft.										
	20	Install 36" Ps	Lin. Ft.										
	21	Install	Lin. Ft.										
	22	Install	Lin. Ft.										
	23	Remove Old Culvert	Lin. Ft.										
	24	Replace Old Culvert	Lin. Ft.										
	25	Finishing and Seeding	100 Sq. Yds.										
	26	Rubble Gutter	Cu. Yds.	10									
	27	Headwall Concrete	Cu. Yds.	1/2									
	28	Headwall Steel	Lbs.										
	29												
	30												
	31												
	32												
C.M. CULVERTS	1	Furnish 12" C.M.	Lin. Ft.										
	2	Furnish 15" C.M.	Lin. Ft.										
	3	Furnish 18" C.M.	Lin. Ft.										
	4	Furnish 24" C.M.	Lin. Ft.										
	5	Furnish 48" C.M.	Lin. Ft.	40									
	6	Furnish	Lin. Ft.										
	7	Furnish 12" C.M. Band	Each										
	8	Furnish 15" C.M. Band	Each										
	9	" 48" "	"	1									
	10												
P ₃ CULVERTS	1	Furnish 18" Ps	Lin. Ft.										
	2	Furnish 24" Ps	Lin. Ft.										
	3	Furnish 30" Ps	Lin. Ft.										
	4	Furnish 36" Ps	Lin. Ft.										
	5												
	6												
GUARD RAIL	1	Guard Rail - Cable	Lin. Ft.										
	2	Guard Rail Anchors	Each										
	3	Dummy Posts	Each										
	4												
SIDEWALKS AND CURBING	1	Concrete Curb - Straight	Lin. Ft.										
	2	Concrete Curb - Radius	Lin. Ft.										
	3	Remove Old Curb	Lin. Ft.										
	4	Remove Old Curb and Gutter	Lin. Ft.										
	5	Remove Old Sidewalk	Sq. Ft.										
	6	Replace Old Sidewalk	Sq. Ft.										
	7	Construct New Sidewalk	Sq. Ft.										
	8	Curb Inlet	Each										
	9	Catch Basin Complete	Each										
	10												
	11												
	12												
SEWER	1	12" Vitrified Sewer Pipe	Lin. Ft.										
	2	15" Vitrified Sewer Pipe	Lin. Ft.										
	3	18" Vitrified Sewer Pipe	Lin. Ft.										
	4	20" Vitrified Sewer Pipe	Lin. Ft.										
	5	24" Vitrified Sewer Pipe	Lin. Ft.										
	6	Manhole Complete	Each										
	7	Catch Basin Complete	Each										
8													
9													
10													
SURFACE	1	Loading Gravel	Cu. Yds.	90									
	2	Hauling Gravel	C.Y. Mi.										
	3	Shaping & Compacting	Cu. Yds.										
	4	Oil	Gal.										
	5	Cut-back	Sq. Yds.										
6													
7													
8													
STRUCTURES	1	Concrete	Cu. Yds.										
	2	Reinforcing Steel	Lbs.										
	3	Excavation	Cu. Yds.										
	4	Piling	Lin. Ft.										
	5												
	6												
	7												
	8												
	9												
	10												

DETAILS



NOTE: HOLD BACKSLOPE TO FENCE STA. 61+50 TO STA. 62+50 RT.
DAYLIGHT FROM STA. 49+50 TO 52+23 LT. AND FROM STA. 52+50 TO 53+18 RT.



SPECIAL SECTION (BORROW PIT) STA. 50+50 TO STA. 53+18 RT.

NOTE: Hold backslope to Water Dept. Fence Sta. 50+00 to 52+23 Rt.

OFFICE OF
RAMSEY COUNTY SURVEYOR
HARRY S. BRONSON
GRADING PLAN OF
VADNAIS BLVD.
FROM OWASSO BLVD. NO. TO 1350' EAST
SCALE AS SHOWN APRIL 1939

PLANS APPROVED 4/28 1939 *Harry S. Bronson*
APPROVED 5/1 1939 *Walter Fallon*
APPROVED 1939 *Walter Fallon*
COMMISSIONER OF PUBLIC UTILITIES

54+42 C
Inp. 48"x21" C.M Rt.
Inp. 3'x3'x6' Conc. Box Lt.
Extend 48'x40' C.M. Rt.

56+50 Lt.
Low point on grade
Construct Rubble Spillway Lt.
From Road Ditch to Lake.

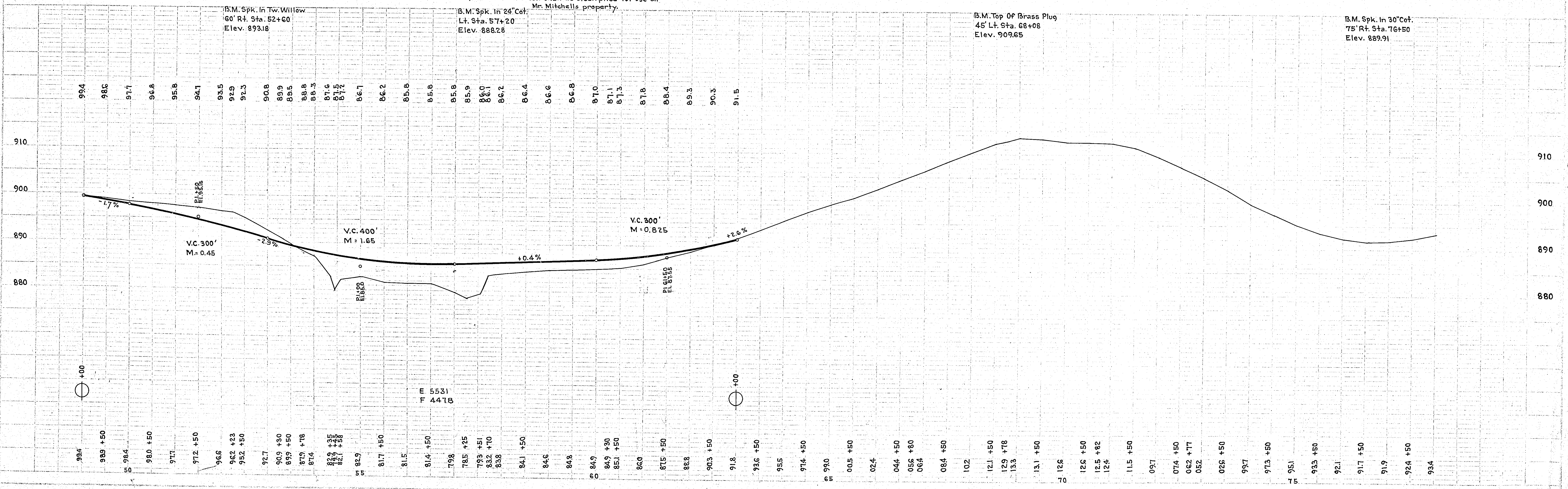
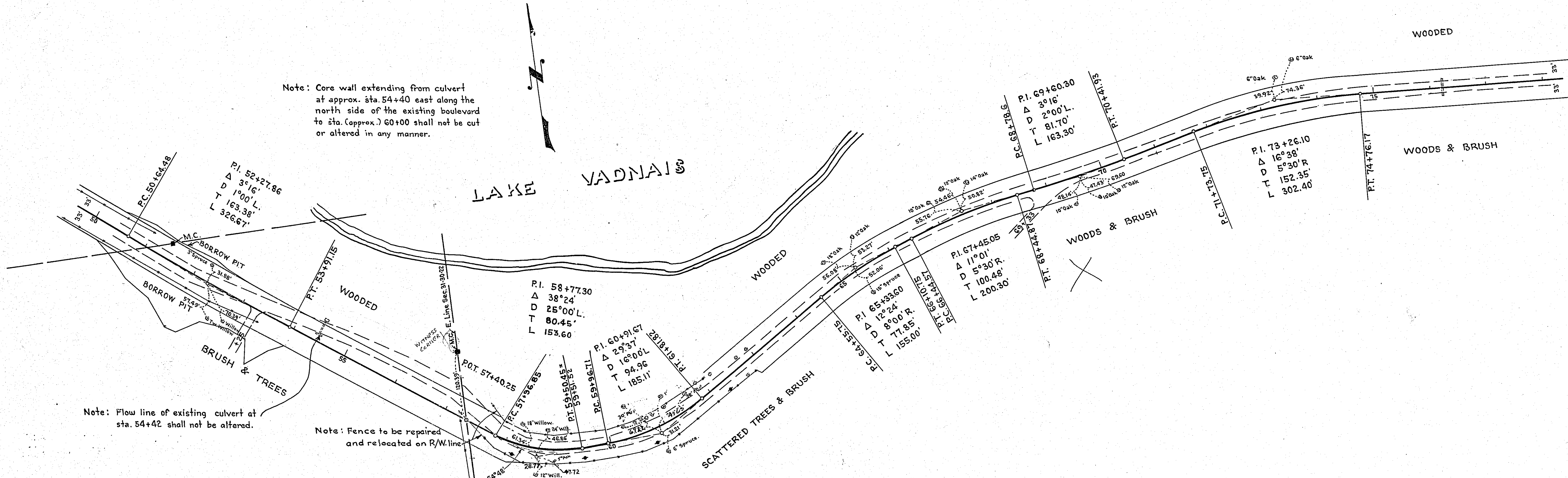
76+21 C
Inp. 12'x50' C.M.

Note: Core wall extending from culvert at approx. sta. 54+40 east along the north side of the existing boulevard to sta. (Approx.) 60+00 shall not be cut or altered in any manner.

Note: Flow line of existing culvert at sta. 54+42 shall not be altered.

Note: Fence to be repaired and relocated on R/W line.

ALMA P MITCHELL
Note: Surface of area covered by easement to be stripped of top soil approx. 18" deep. This soil shall be stock piled for use on Mr. Mitchell's property.



907614
BL 1029-563

7753