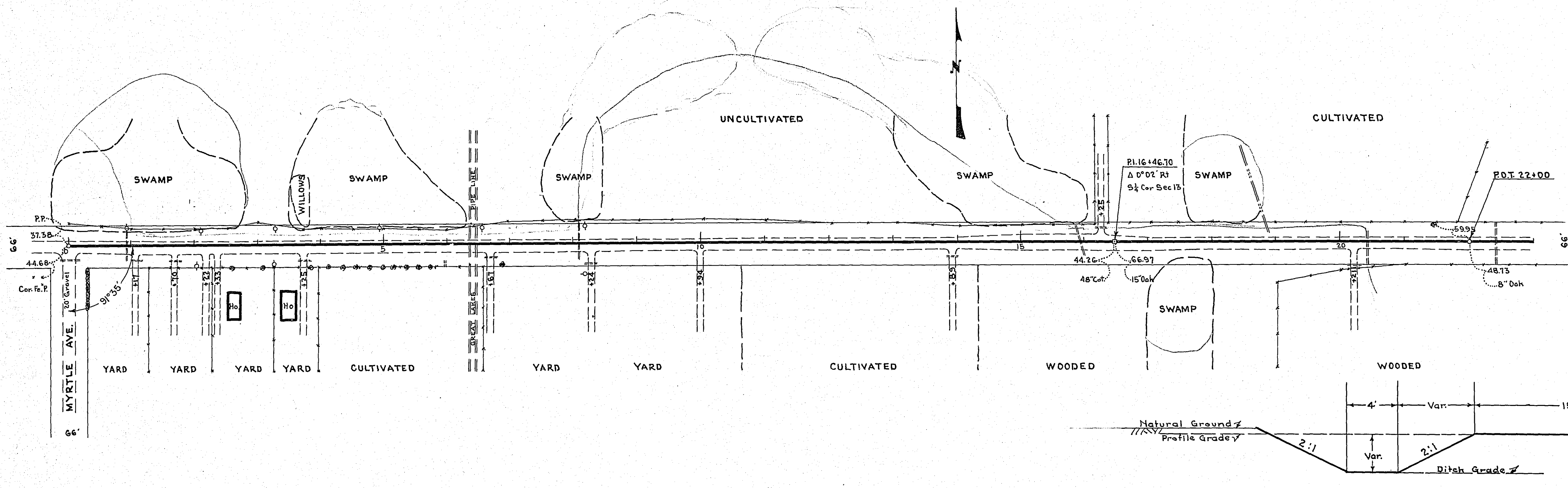


0+00 Rt. 0+934 1+19 Rt. 1+70 Rt. 2+75 Rt. 6+67 Rt. 8+09 L. 8+24 Rt. 13+89 Rt. 15+91 L. 16+25 Lt. 20+42 L. 20+21 Rt. 22+41 L.
 Inp. 15°38' C.M. Inp. 12°46' C.M. Inp. 12°20' C.M. Inp. 12°20' C.M. Inp. 12°16' C.M. Inp. 12°10' C.M. Inp. 12°58' C.M. Inp. 12°20' C.M. Inp. 12°22' C.M. Inp. 12°48' C.M. Inp. 18°24' Conc. Inp. 18°50' C.M. Inp. 15°20' C.M. Inp. 12°10' C.M.

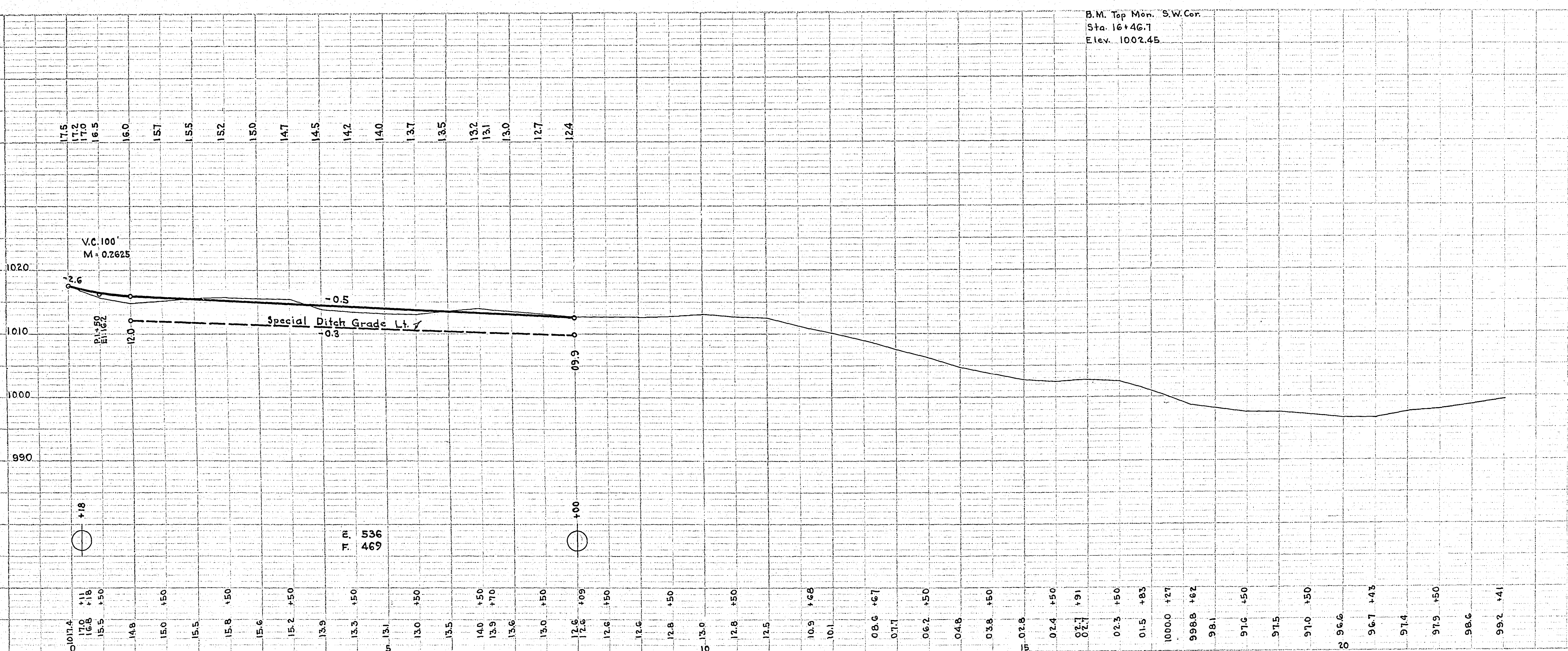
PLAN
 CHECKED BY
 DATE
 SURVEYED BY
 DATE
 NOTE BOOK NO.
 ALIGNMENT CHECKED BY
 DATE
 RT. OF WAY CHECKED BY
 DATE



TYPICAL SECTION

NOTE: SLOPES AND BACKSLOPES TO CONFORM TO R/W.

PROFILE
 CHECKED BY
 DATE
 SURVEYED BY
 DATE
 NOTE BOOK NO.
 GRADES CHECKED BY
 DATE
 B.M. NOTED BY
 DATE
 STRUCTURE NOTATIONS (N/A)



OFFICE OF
 RAMSEY COUNTY SURVEYOR
 HARRY S. BRONSON
 DRAINAGE PLAN OF
LARPENTEUR AVE.
 FROM MYRTLE AVE. TO 800' EAST.
 JUNE 1939 SCALE AS SHOWN

PLANS APPROVED 6/9 1939 *Harry S. Bronson*
 COUNTY SURVEYOR