

PLAN	SURVEYS	DATE
NO.	NO.	
BY	BY	
CHECKED	CHECKED	
DATE	DATE	

PROFILE	SURVEYS	DATE
NO.	NO.	
BY	BY	
CHECKED	CHECKED	
DATE	DATE	

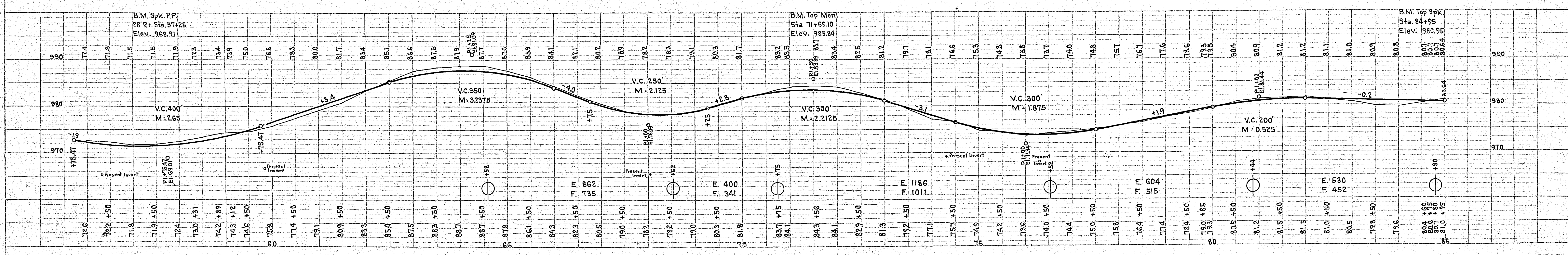
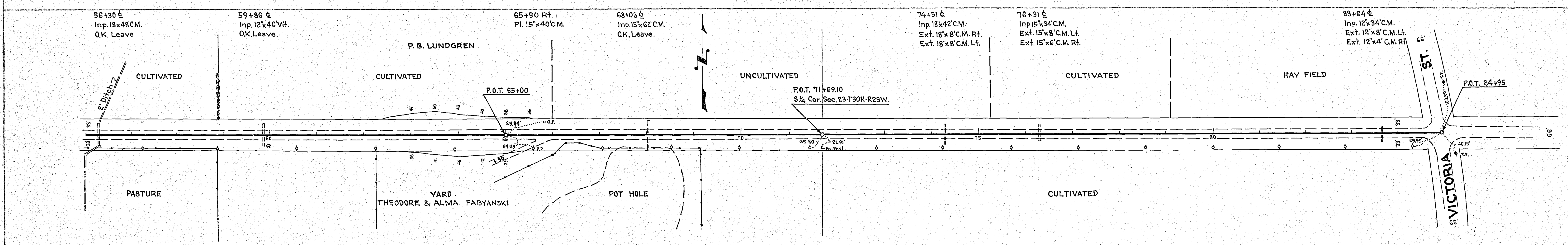
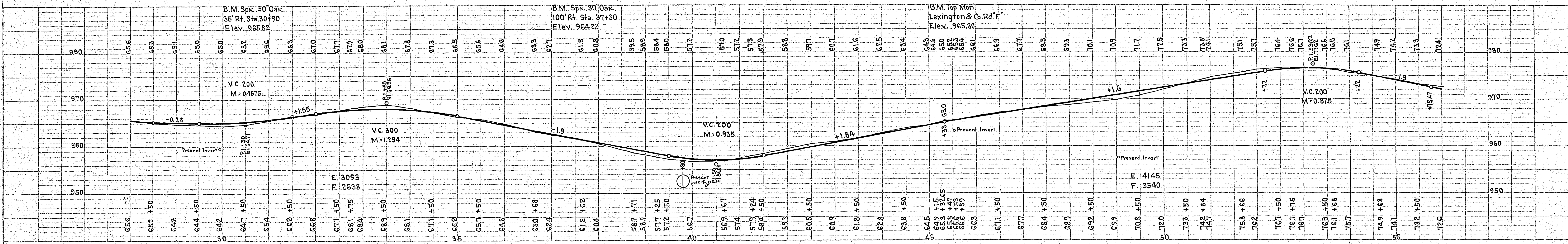
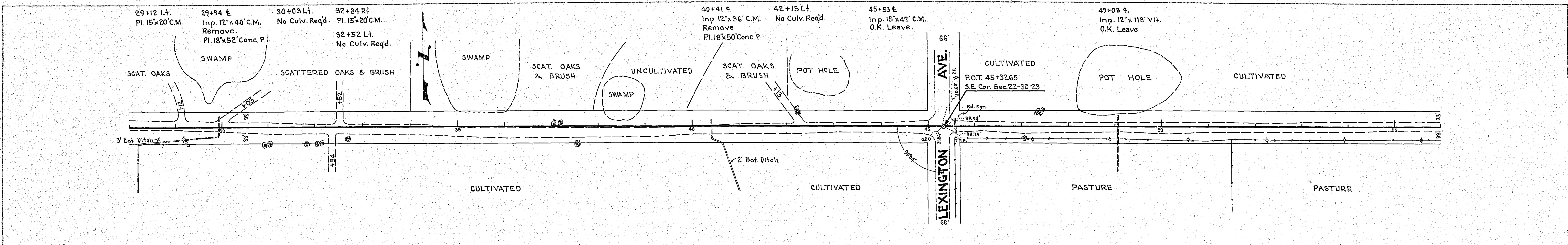


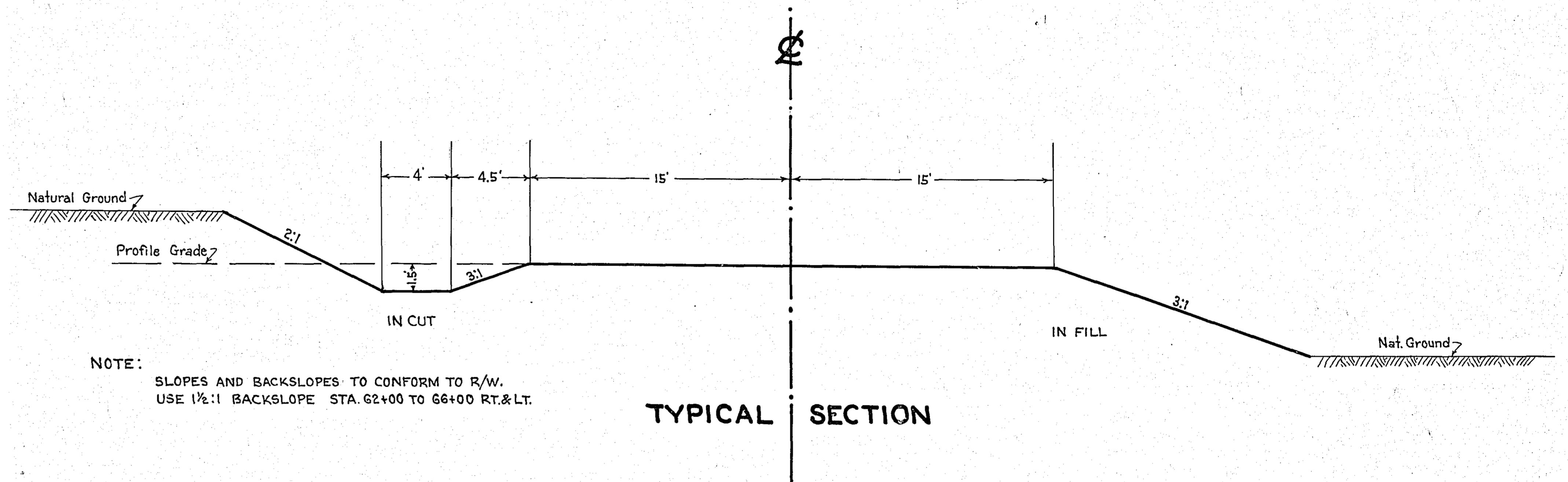
PLATE 2 - PLAN-PROFILE O. P. R. & R. E. STANBARD
KEUFFEL & ESSER CO., NEW YORK

Co. Rd. F
2903 SHEET 3 OF 10 SHEETS
See Small Map & Plans 1941 - for sheet # 2
This sheet in Part of Project

STATEMENT OF ESTIMATED QUANTITIES

CLASS	ITEM	UNIT	MILE From To	MILE From To	MILE From To	MILE From To	MILE From To	MILE From To	MILE From To	MILE From To	MILE From To	MILE From To	TOTAL ESTIMATED QUANTITIES
GRADING	1	Clearing	Trees	2.2									
	2	Grubbing	Trees	2.0									
	3	Clearing	Acres										
	4	Grubbing	Acres										
	5	Excavation Earth	Cu. Yds.	10,820									
	6	Excavation Loose Rock	Cu. Yds.										
	7	Excavation Solid Rock	Cu. Yds.										
	8	Excavation Overhaul	Cu. Yds.										
	9	Excavation Special	Cu. Yds.										
	10	Excavation Hand Ditch	Cu. Yds.										
	11	Install 12" C.M.	Lin. Ft.										
	12	Install 15" C.M.	Lin. Ft.										
	13	Install 18" C.M.	Lin. Ft.										
	14	Install 24" C.M.	Lin. Ft.										
	15	Install	Lin. Ft.										
	16	Install	Lin. Ft.										
	17	Install 18" P3	Lin. Ft.										
	18	Install 24" P3	Lin. Ft.										
	19	Install 30" P3	Lin. Ft.										
	20	Install 36" P3	Lin. Ft.										
	21	Install	Lin. Ft.										
	22	Install	Lin. Ft.										
	23	Remove Old Culvert	Lin. Ft.										
	24	Replace Old Culvert	Lin. Ft.										
	25	Finishing and Seeding	100 Sq. Yds.	5000									
	26	Rubble Gutter	Cu. Yds.										
	27	Headwall Concrete	Cu. Yds.										
	28	Headwall Steel	Lbs.	1800									
	29	Remove Fence	Lin. Ft.	1800									
	30	Replace Fence	"	1800									
	31												
	32												
C.M. CULVERTS	1	Furnish 12" C.M.	Lin. Ft.	12									
	2	Furnish 15" C.M.	Lin. Ft.	114									
	3	Furnish 18" C.M.	Lin. Ft.	16									
	4	Furnish 24" C.M.	Lin. Ft.										
	5	Furnish	Lin. Ft.										
	6	Furnish	Lin. Ft.										
	7	Furnish 12" C.M. Band	Each	2									
	8	Furnish 15" C.M. Band	Each	3									
	9	Furnish 18" C.M. Band	Each	2									
	10												
P3 CULVERTS	1	Furnish 18" P3	Lin. Ft.	102									
	2	Furnish 24" P3	Lin. Ft.										
	3	Furnish 30" P3	Lin. Ft.										
	4	Furnish 36" P3	Lin. Ft.										
	5												
	6												
GUARD RAIL	1	Guard Rail - Cable	Lin. Ft.										
	2	Guard Rail Anchors	Each										
	3	Dummy Posts	Each										
	4												
SIDEWALKS AND CURBING	1	Concrete Curb - Straight	Lin. Ft.										
	2	Concrete Curb - Radius	Lin. Ft.										
	3	Remove Old Curb	Lin. Ft.										
	4	Remove Old Curb and Gutter	Lin. Ft.										
	5	Remove Old Sidewalk	Sq. Ft.										
	6	Replace Old Sidewalk	Sq. Ft.										
	7	Construct New Sidewalk	Sq. Ft.										
	8	Curb Inlet	Each										
	9	Catch Basin Complete	Each										
	10												
	11												
	12												
SEWER	1	12" Vitrified Sewer Pipe	Lin. Ft.										
	2	15" Vitrified Sewer Pipe	Lin. Ft.										
	3	18" Vitrified Sewer Pipe	Lin. Ft.										
	4	20" Vitrified Sewer Pipe	Lin. Ft.										
	5	24" Vitrified Sewer Pipe	Lin. Ft.										
	6	Manhole Complete	Each										
	7	Catch Basin Complete	Each										
	8												
	9												
	10												
SURFACE	1	Loading Gravel	Cu. Yds.	1300									
	2	Hauling Gravel	C.Y. Mi.										
	3	Shaping & Compacting	Cu. Yds.										
	4	Oil Stabilization	Gal. S.Y.	11,250									
	5	Sub-back Black Top	Sq. Yds.	11,250									
	6	Gravel (On Site)	Cu. Yds.	625									
	7												
STRUCTURES	1	Concrete	Cu. Yds.										
	2	Reinforcing Steel	Lbs.										
	3	Excavation	Cu. Yds.										
	4	Piling	Lin. Ft.										
	5												
	6												
	7												
	8												
	9												
	10												

DETAILS



OFFICE OF
RAMSEY COUNTY SURVEYOR
HARRY S. BRONSON
GRADING PLAN OF
COUNTY ROAD "F"
FROM HAMLIN AVENUE TO VICTORIA ST.
FEBRUARY 1939

PLANS APPROVED 4/29 1939 *Harry S. Bronson*
COUNTY SURVEYOR
APPROVED 5/1 1939 *W.H. Fallon*
CHAIRMAN COUNTY BOARD

PLAN	SURVEYED	DATE
	PLOTTED	
	NOTE BOOK ALIGNMENT CHECKED	
	PT. OF WORK CHECKED	
	NO.	

PROFILE	SURVEYED	DATE
	PLOTTED	
	NOTE BOOK GRADES CHECKED	
	GRADES NOTED	
	PROPOSED GRADES CHECKED	
	NO.	

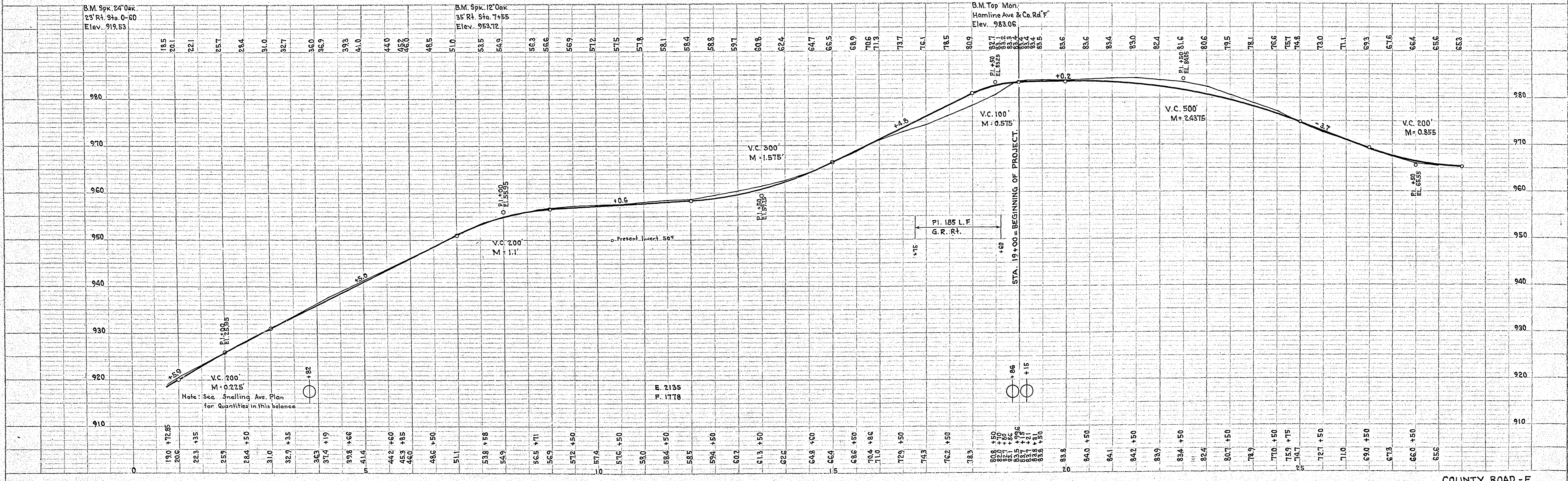
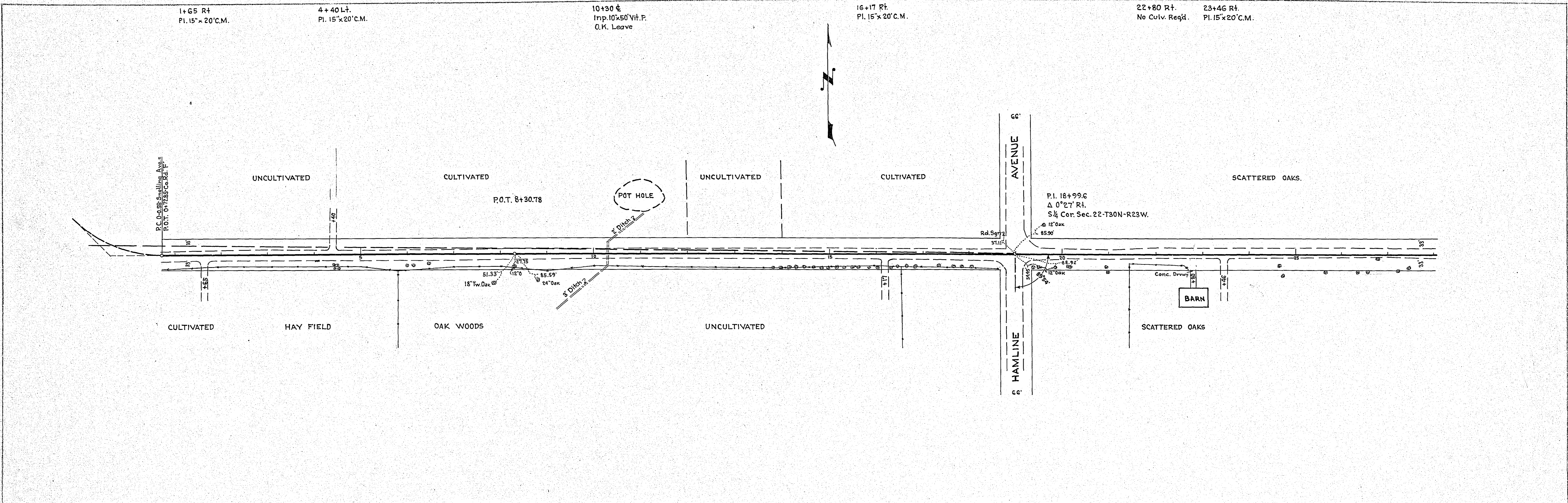
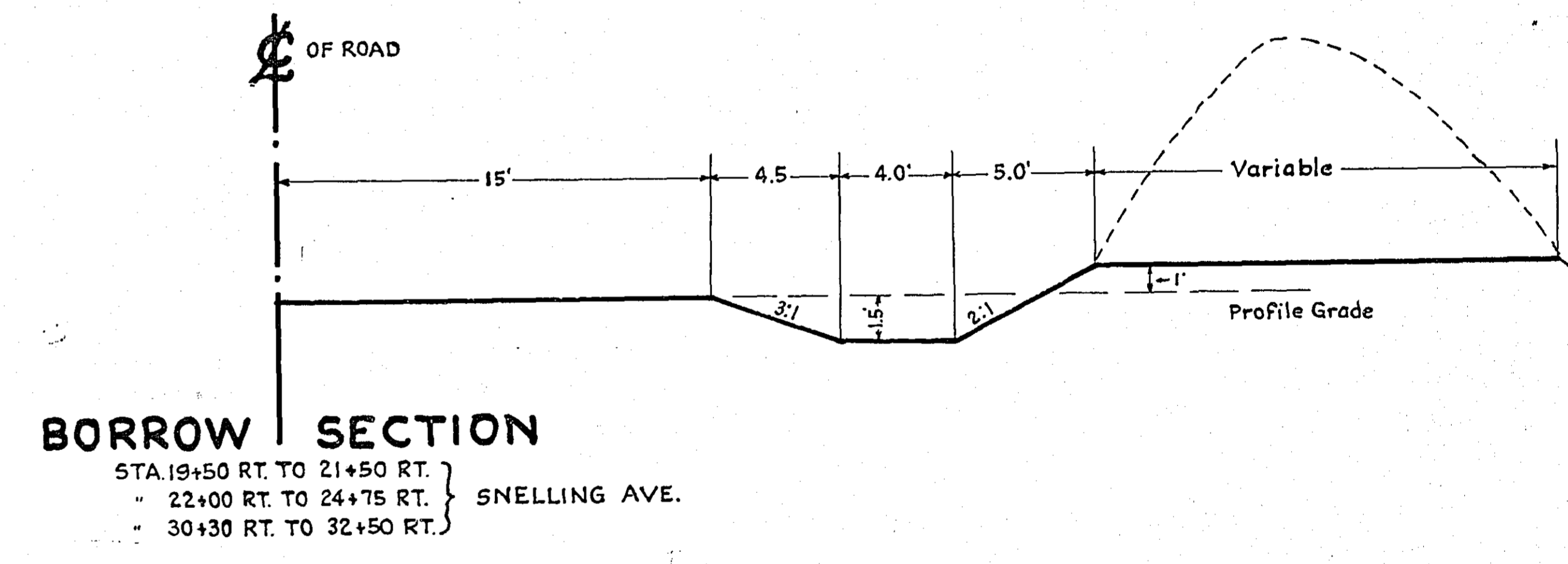
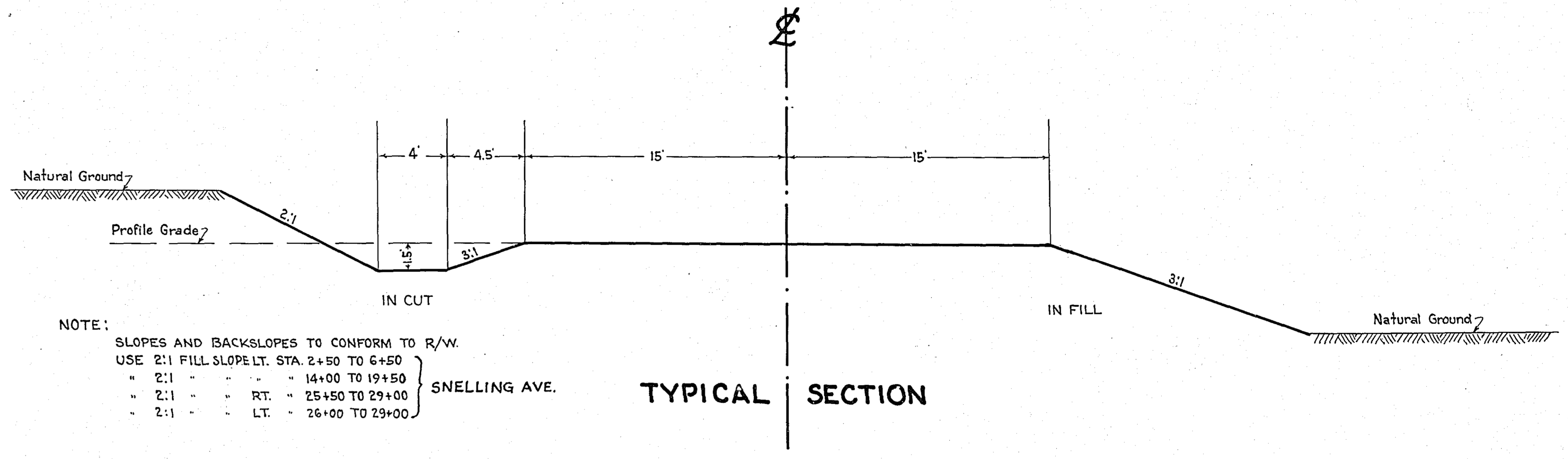


PLATE 1 - PLAN-PROFILE - G. R. & P. E. STANDARD
 NEWELL & BISHOP CO., NEW YORK

STATEMENT OF ESTIMATED QUANTITIES

CLASS	ITEM	UNIT	MILE From To	MILE From To	MILE From To	MILE From To	MILE From To	MILE From To	MILE From To	MILE From To	MILE From To	MILE From To	MILE From To	TOTAL ESTIMATED QUANTITIES	
GRADING	1	Clearing	Trees											50	
	2	Grubbing	Trees											50	
	3	Clearing	Acres												
	4	Grubbing	Acres												
	5	Excavation Earth	Cu. Yds.											14,445	
	6	Excavation Borrow	Cu. Yds.											5,762	
	7	Excavation Solid Rock	Cu. Yds.												
	8	Excavation Overhaul	Cu. Yds.												
	9	Excavation Special	Cu. Yds.												
	10	Excavation Hand Ditch	Cu. Yds.												
	11	Install 12" Vit. P.	Lin. Ft.											42	
	12	Install 15" C.M.	Lin. Ft.											290	
	13	Install 18" C.M.	Lin. Ft.												
	14	Install 24" C.M.	Lin. Ft.												
	15	Install	Lin. Ft.												
	16	Install	Lin. Ft.												
	17	Install 18" Conc. P.	Lin. Ft.											172	
	18	Install 24" P3	Lin. Ft.												
	19	Install 30" P3	Lin. Ft.												
	20	Install 36" P3	Lin. Ft.												
	21	Install	Lin. Ft.												
	22	Install	Lin. Ft.												
	23	Remove Old Culvert	Lin. Ft.											78	
	24	Replace Old Culvert	Lin. Ft.												
	25	Finishing	Sq. Yds.											57,200	
	26	Rubble Gutter	Cu. Yds.												
	27	Headwall Concrete	Cu. Yds.												
	28	Headwall Steel	Lbs.												
	29	Remove Fence	Lin. Ft.											4,410	
	30	Replace Fence	Lin. Ft.											3,716	
	31														
	32														
C.M. CULVERTS	1	Furnish 12" Vit. P.	Lin. Ft.											42	
	2	Furnish 15" C.M.	Lin. Ft.											290	
	3	Furnish 18" C.M.	Lin. Ft.												
	4	Furnish 24" C.M.	Lin. Ft.												
	5	Furnish	Lin. Ft.												
	6	Furnish	Lin. Ft.												
	7	Furnish 12" C.M. Band	Each												
	8	Furnish 15" C.M. Band	Each												
	9														
	10														
P3 CULVERTS	1	Furnish 18" Conc. P.	Lin. Ft.											172	
	2	Furnish 24" P3	Lin. Ft.												
	3	Furnish 30" P3	Lin. Ft.												
	4	Furnish 36" P3	Lin. Ft.												
	5														
	6														
GUARD RAIL	1	Guard Rail - Cable Furn.	Lin. Ft.											3,495	
	2	Guard Rail Anchors	Each												
	3	Dummy Posts	Each												
	4														
SIDEWALKS AND CURBING	1	Concrete Curb - Straight	Lin. Ft.												
	2	Concrete Curb - Radius	Lin. Ft.												
	3	Remove Old Curb	Lin. Ft.												
	4	Remove Old Curb and Gutter	Lin. Ft.												
	5	Remove Old Sidewalk	Sq. Ft.												
	6	Replace Old Sidewalk	Sq. Ft.												
	7	Construct New Sidewalk	Sq. Ft.												
	8	Curb Inlet	Each												
	9	Catch Basin Complete	Each												
	10														
	11														
	12														
SEWER	1	12" Vitrified Sewer Pipe	Lin. Ft.												
	2	15" Vitrified Sewer Pipe	Lin. Ft.												
	3	18" Vitrified Sewer Pipe	Lin. Ft.												
	4	20" Vitrified Sewer Pipe	Lin. Ft.												
	5	24" Vitrified Sewer Pipe	Lin. Ft.												
	6	Manhole Complete	Each												
	7	Catch Basin Complete	Each												
SURFACE	1	Loading Gravel	Cu. Yds.												
	2	Hauling Gravel	C.Y. Mt.												
	3	Shaping & Compacting	Cu. Yds.												
	4	Oil Stabilization	Sq. Yds.											18,600	
	5	Cut-back	Sq. Yds.											18,600	
	6	Gravel On Site	Cu. Yds.											715	
	7														
	8														
STRUCTURES	1	Concrete	Cu. Yds.												
	2	Reinforcing Steel	Lbs.												
	3	Excavation	Cu. Yds.												
	4	Piling	Lin. Ft.												
	5														
	6														

DETAILS



OFFICE OF
RAMSEY COUNTY SURVEYOR
HARRY S. BRONSON
GRADING PLANS OF
COUNTY ROAD "F"
FROM HAMLINE AV. TO SNELLING AV.
ALSO
SNELLING AVE.
FROM CO. RD. "F" TO CO. RD. "G"
OCT. 1941 SCALE AS SHOWN

PLANS APPROVED 10/9/1941 *[Signature]*
ACTING COUNTY SURVEYOR

APPROVED 1941 *[Signature]*
CHAIRMAN COUNTY BOARD

PLANNED BY *[Signature]*
ASSISTANT ENGINEER

2903A

PLAN	FORWARDED	DATE
	PLOTTED	
	NOTED	
	REVISIONS	
	CHECKED	
	BY	
	DATE	

PROFILE	FORWARDED	DATE
	PLOTTED	
	NOTED	
	REVISIONS	
	CHECKED	
	BY	
	DATE	

35+00 Rt. Pl. 15'x20' C.M.
 36+36 Lt. No Culv. Req'd.
 38+24 C Imp. 12'x68' V.H.P. Ext. 12'x10' V.H.P. Lt.
 NOTE: Place 6 - 15'x20' C.M.S As Directed By The Engineer
 43+40 Rt. No Culv. Req'd.
 45+21 C Imp. 12'x42' V.H.P. Remove Pl. 18'x60' Conc. P.
 49+18 Lt. Pl. 15'x30' C.M.
 55+00 C Pl. 18'x54' Conc. P.

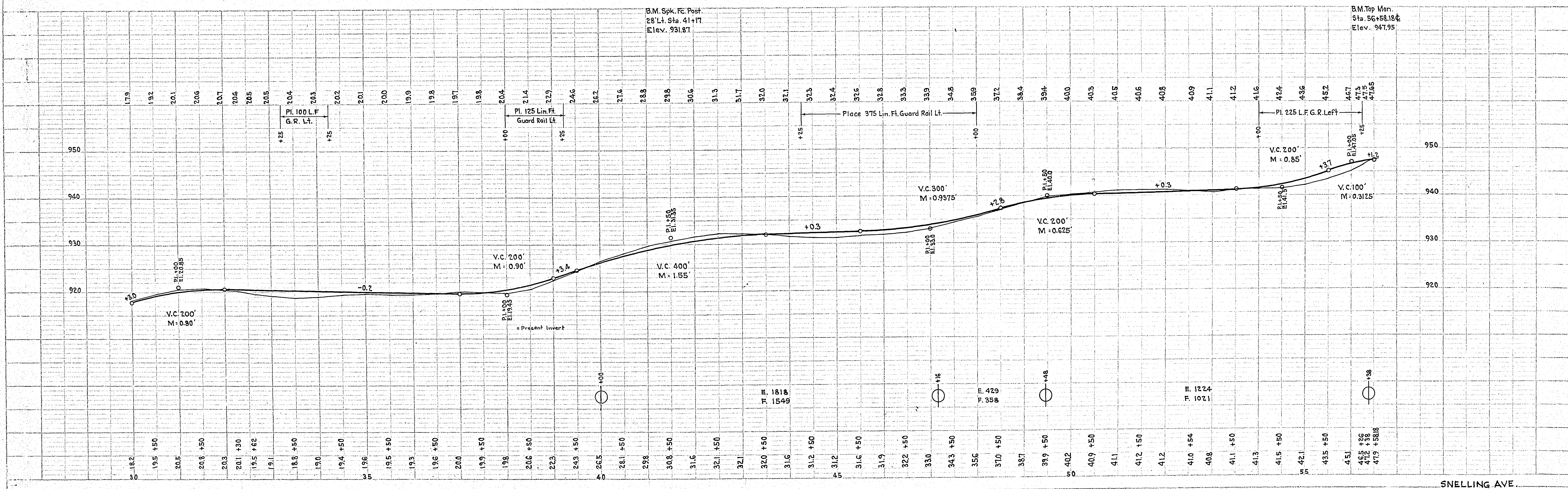
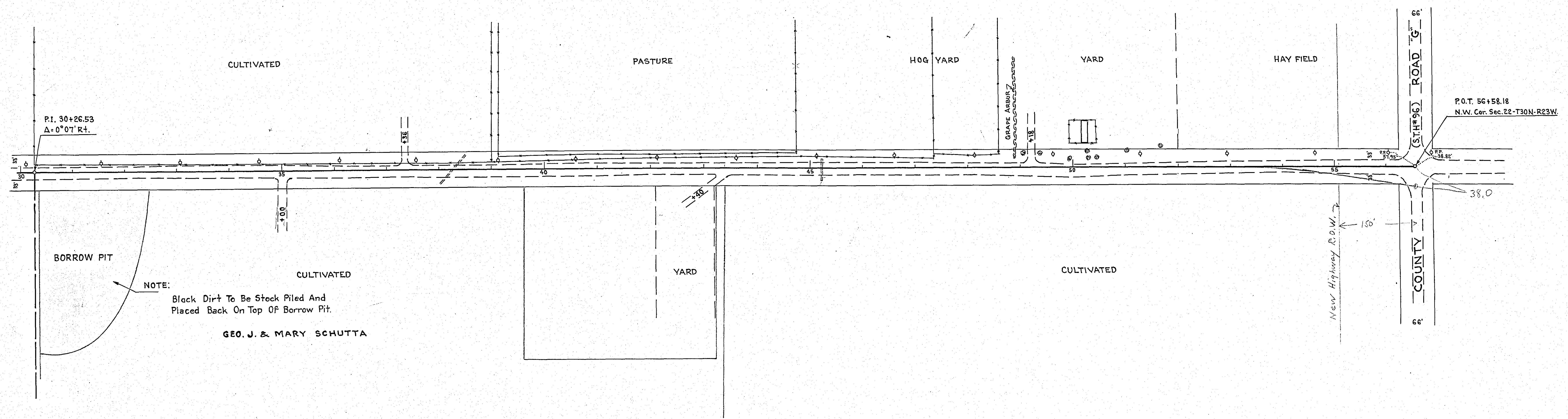
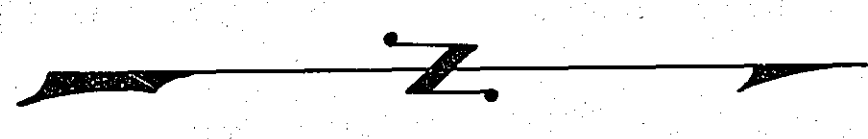
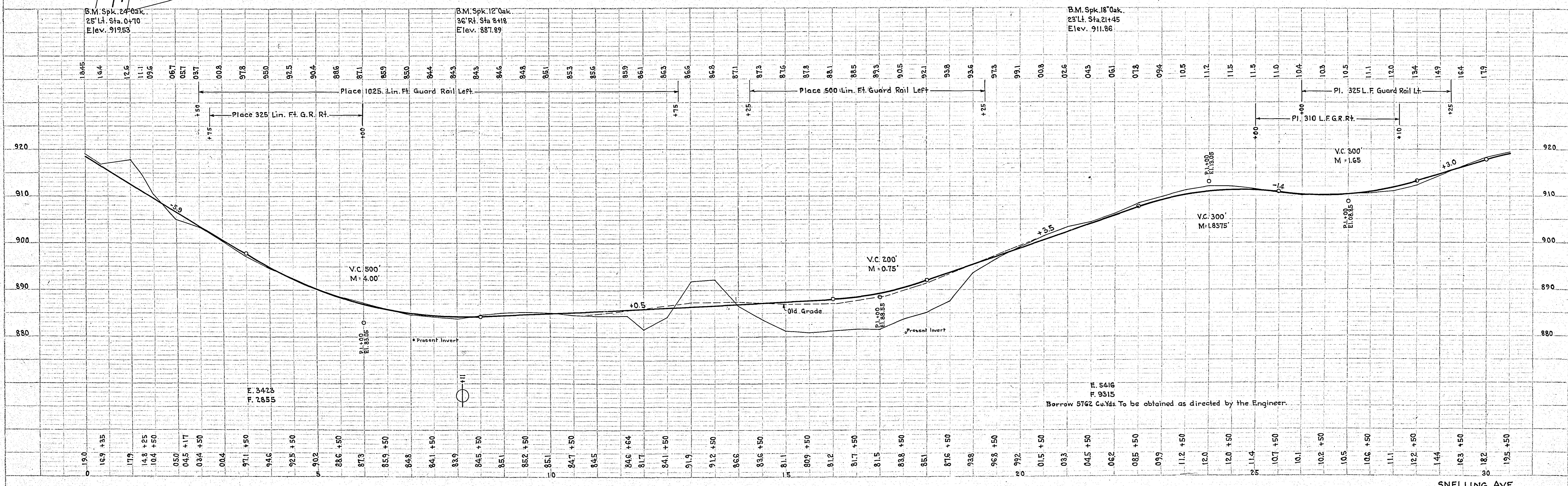
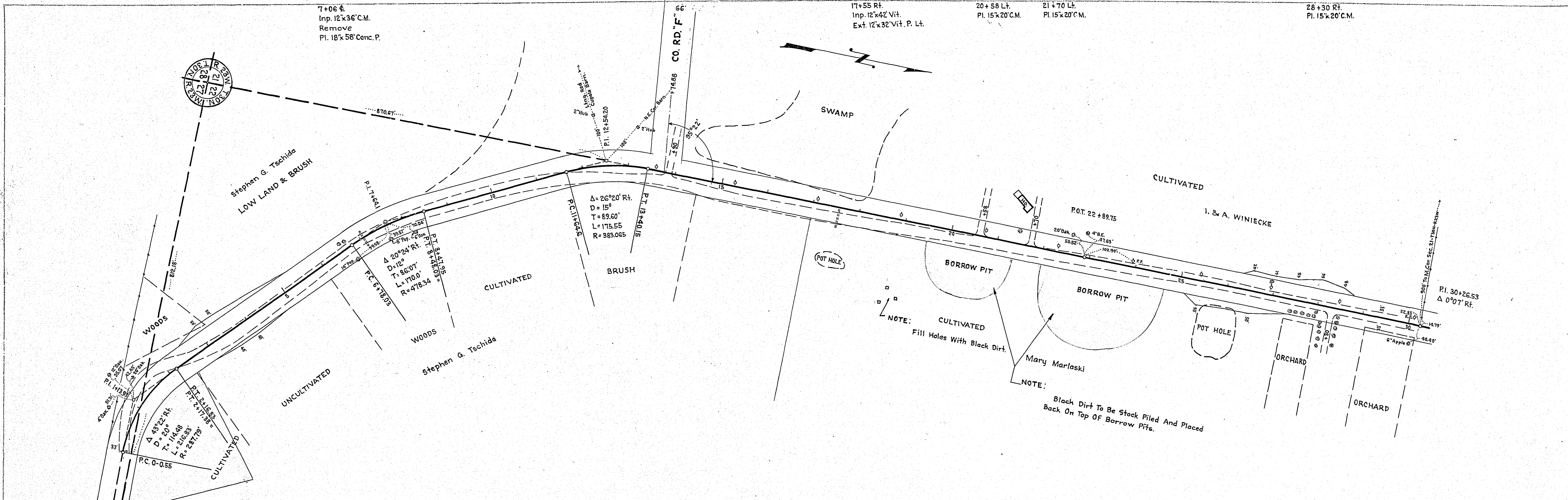


PLATE 1 - PLAN-PROFILE
 KEPPEN & BOSTON NEW YORK

PLAN	REVIEWED	DATE
NO.	NOTED	BY
DATE	NOTED	BY
DATE	NOTED	BY
DATE	NOTED	BY
DATE	NOTED	BY
DATE	NOTED	BY
DATE	NOTED	BY
DATE	NOTED	BY
DATE	NOTED	BY
DATE	NOTED	BY

PROFILE	REVIEWED	DATE
NO.	NOTED	BY
DATE	NOTED	BY
DATE	NOTED	BY
DATE	NOTED	BY
DATE	NOTED	BY
DATE	NOTED	BY
DATE	NOTED	BY
DATE	NOTED	BY
DATE	NOTED	BY
DATE	NOTED	BY



E. 5416
F. 9315
Borrow 5742 Cu.Yds To be obtained as directed by the Engineer.

PLATE 1 - PLAN - PROFILE