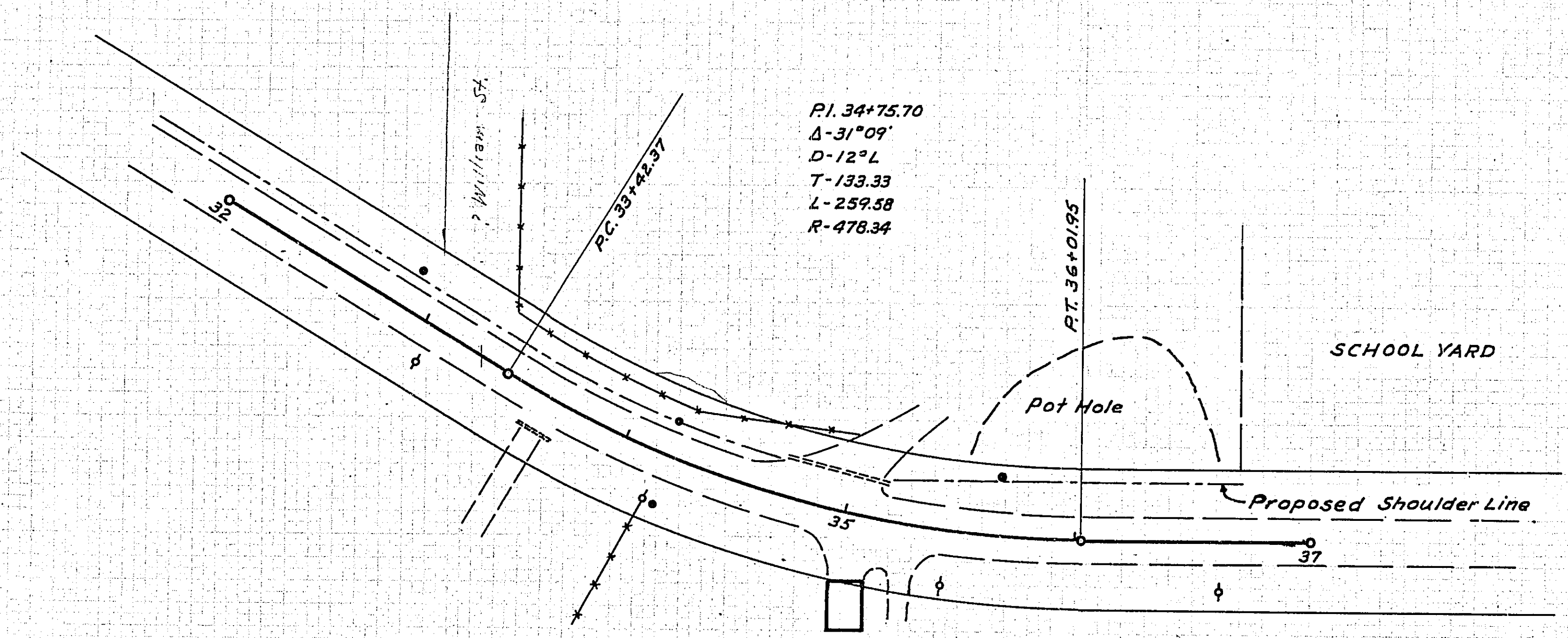
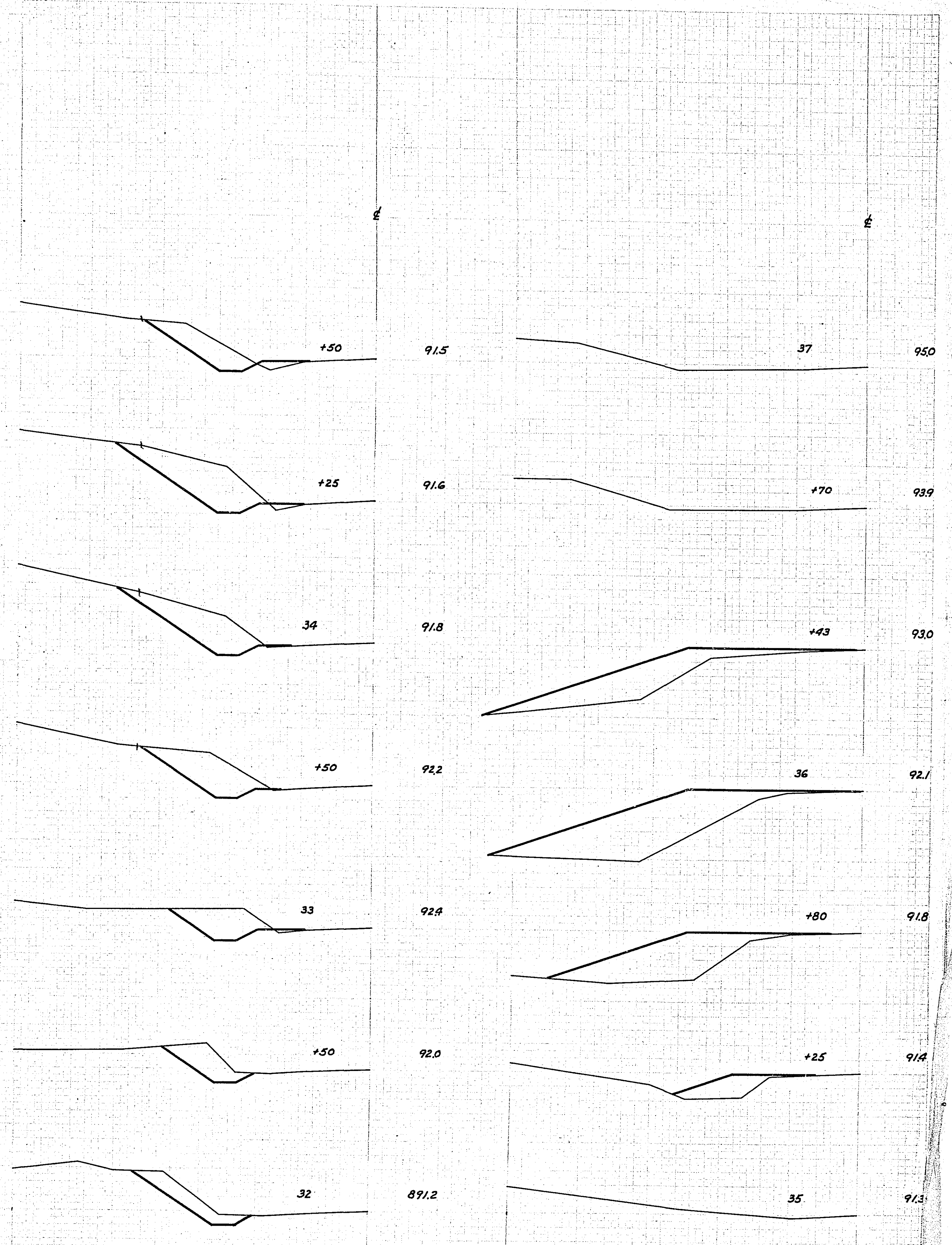
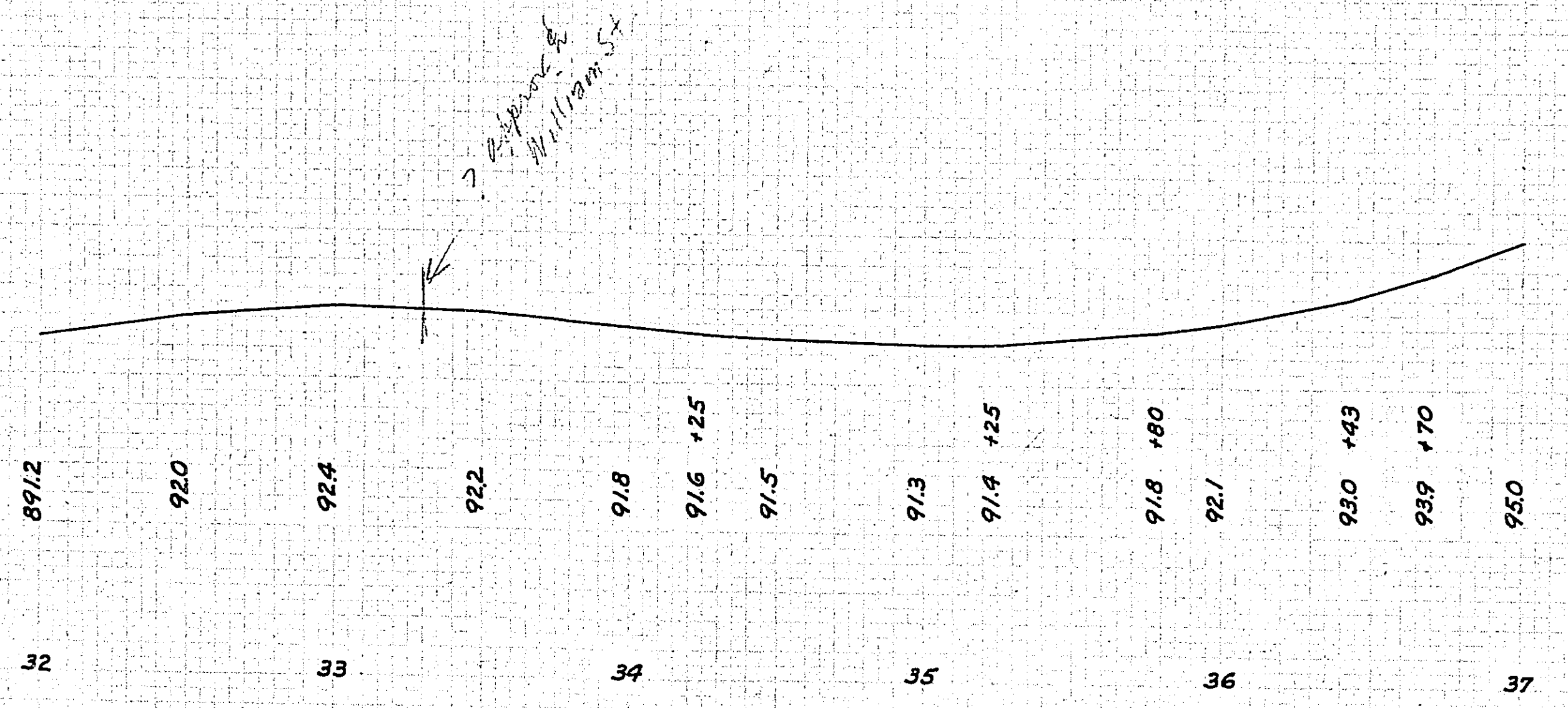
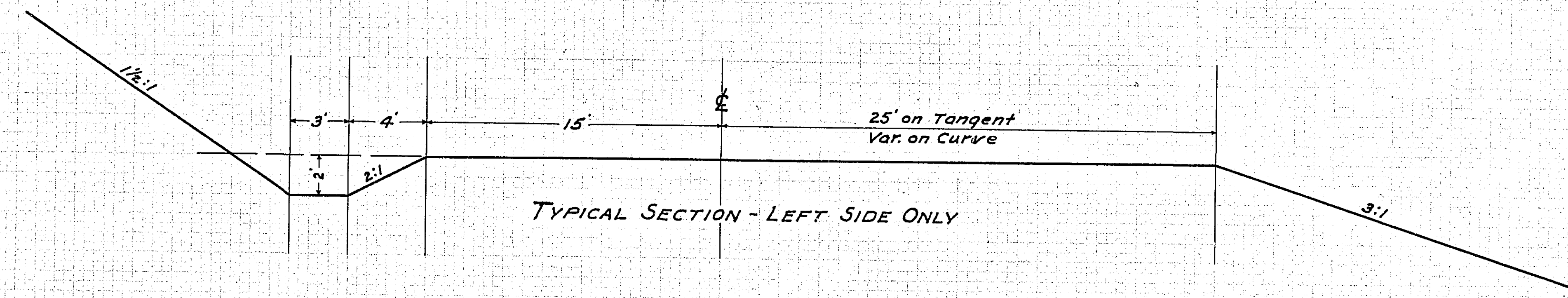


34+92 L.A.
Imp. 12'x44' C.M.
Rem. & Rep.

P.I. 34+75.70
Δ-31°09'
D-12°L
T-133.33
L-259.38
R-478.34



B.M. Nail in R.P.
17 Rt Sta. 33+10
Elev. 893.40



ESTIMATED QUANTITIES
EXC. 700 CU. YDS.

MCCARRON'S BLVD. NO.
BETWEEN
ELMER & RICE STS.