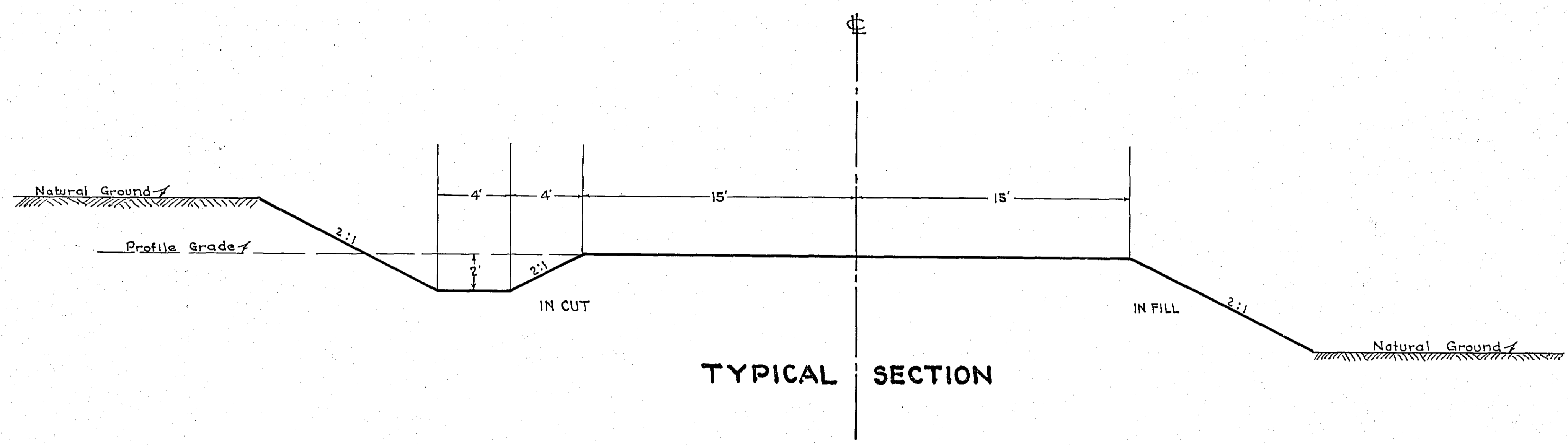


STATEMENT OF ESTIMATED QUANTITIES

CLASS	ITEM	UNIT	MILE From To	MILE From To	MILE From To	MILE From To	MILE From To	MILE From To	MILE From To	MILE From To	MILE From To	MILE From To	MILE From To	TOTAL ESTIMATED QUANTITIES	
GRADING	1	Clearing	Trees												
	2	Grubbing	Trees												
	3	Clearing	Acres												
	4	Grubbing	Acres												
	5	Excavation Earth	Cu. Yds.	9312											
	6	Excavation Loose Rock	Cu. Yds.												
	7	Excavation Solid Rock	Cu. Yds.												
	8	Excavation Overhaul	Cu. Yds.												
	9	Excavation Special	Cu. Yds.												
	10	Excavation Hand Ditch	Cu. Yds.												
	11	Install 12" C.M.	Lin. Ft.												
	12	Install 15" C.M.	Lin. Ft.	134											
	13	Install 18" C.M.	Lin. Ft.												
	14	Install 24" C.M.	Lin. Ft.												
	15	Install	Lin. Ft.												
	16	Install	Lin. Ft.												
	17	Install 18" Ps	Lin. Ft.	132											
	18	Install 24" Ps	Lin. Ft.												
	19	Install 30" Ps	Lin. Ft.												
	20	Install 36" Ps	Lin. Ft.												
	21	Install	Lin. Ft.												
	22	Install	Lin. Ft.												
	23	Remove Old Culvert	Lin. Ft.												
	24	Replace Old Culvert	Lin. Ft.												
	25	Finishing and Seeding	100 Sq.Yds.												
	26	Rubble Gutter	Cu. Yds.												
	27	Headwall Concrete	Cu. Yds.												
	28	Headwall Steel	Lbs.												
	29														
	30														
	31														
	32														
C.M. CULVERTS	1	Furnish 12" C.M.	Lin. Ft.	134											
	2	Furnish 15" C.M.	Lin. Ft.												
	3	Furnish 18" C.M.	Lin. Ft.												
	4	Furnish 24" C.M.	Lin. Ft.												
	5	Furnish	Lin. Ft.												
	6	Furnish	Lin. Ft.												
	7	Furnish 12" C.M. Bond	Each												
	8	Furnish 15" C.M. Bond	Each												
	9														
	10														
P ₃ CULVERTS	1	Furnish 18" P ₃	Lin. Ft.	132											
	2	Furnish 24" P ₃	Lin. Ft.												
	3	Furnish 30" P ₃	Lin. Ft.												
	4	Furnish 36" P ₃	Lin. Ft.												
	5														
	6														
GUARD RAIL	1	Guard Rail - Cable	Lin. Ft.												
	2	Guard Rail Anchors	Each												
	3	Dummy Posts	Each												
	4														
SIDEWALKS AND CURBING	1	Concrete Curb - Straight	Lin. Ft.												
	2	Concrete Curb - Radius	Lin. Ft.												
	3	Remove Old Curb	Lin. Ft.												
	4	Remove Old Curb and Gutter	Lin. Ft.												
	5	Remove Old Sidewalk	Sq. Ft.												
	6	Replace Old Sidewalk	Sq. Ft.												
	7	Construct New Sidewalk	Sq. Ft.												
	8	Curb Inlet	Each												
	9	Catch Basin Complete	Each												
	10														
	11														
	12														
SEWER	1	12" Vitrified Sewer Pipe	Lin. Ft.												
	2	15" Vitrified Sewer Pipe	Lin. Ft.												
	3	18" Vitrified Sewer Pipe	Lin. Ft.												
	4	20" Vitrified Sewer Pipe	Lin. Ft.												
	5	24" Vitrified Sewer Pipe	Lin. Ft.												
	6	Manhole Complete	Each												
	7	Catch Basin Complete	Each												
	8														
	9														
	10														
SURFACE	1	Loading Gravel	Cu. Yds.	430											
	2	Hauling Gravel	C.Y. MI.												
	3	Shaping & Compacting	Cu. Yds.												
	4	Oil	Gal.												
	5	Cut-back	Sq. Yds.												
	6														
	7														
	8														
STRUCTURES	1	Concrete	Cu. Yds.												
	2	Reinforcing Steel	Lbs.												
	3	Excavation	Cu. Yds.												
	4	Piling	Lin. Ft.												
	5														
	6														
	7														
	8														
	9														
	10														

DETAILS



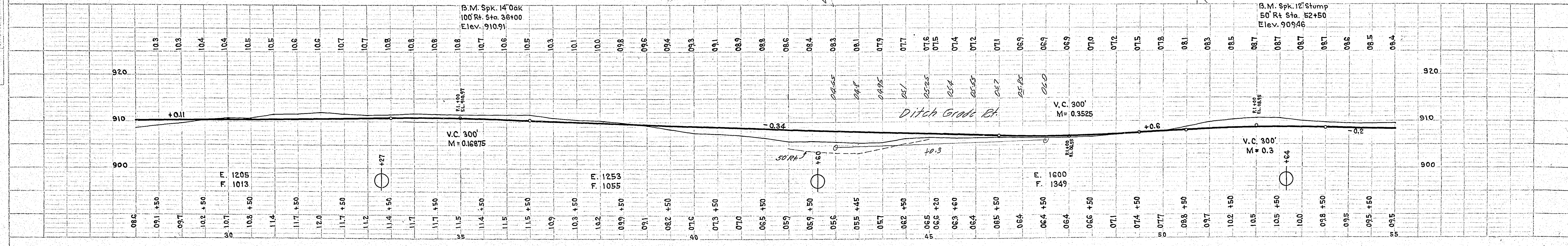
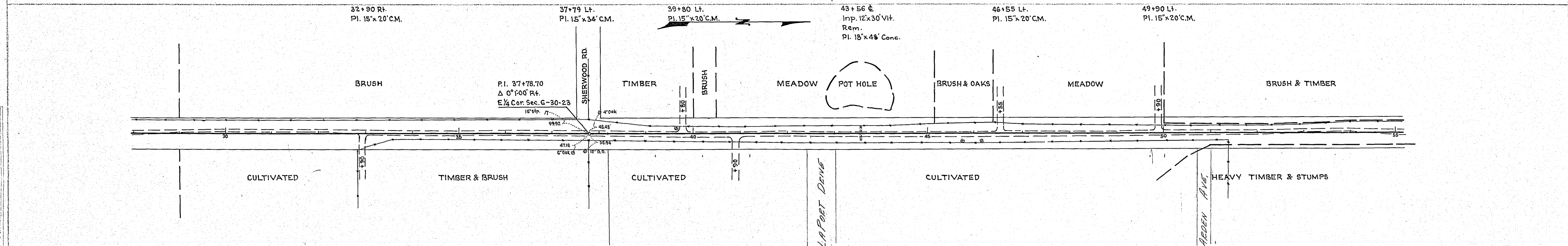
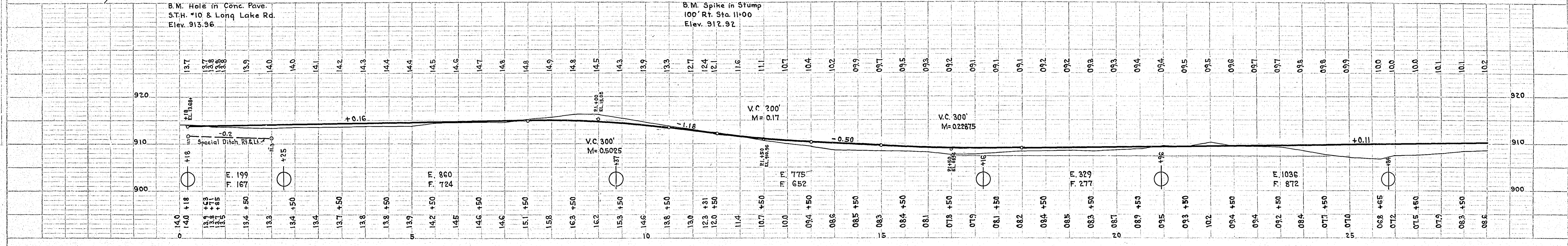
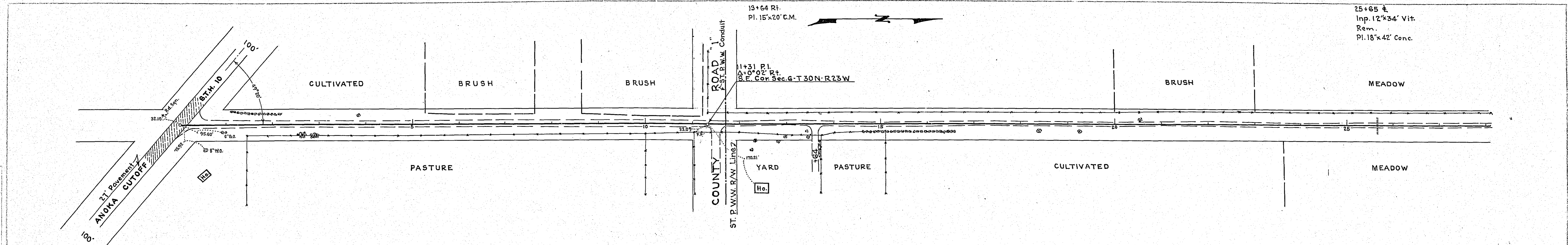
OFFICE OF
 RAMSEY COUNTY SURVEYOR
 HARRY S. BRONSON
 GRADING PLAN
LONG LAKE ROAD
 FROM STH. NO. 10 TO COUNTY ROAD "J"
 DEC. 1938 SCALE AS SHOWN

PLANS APPROVED 1938 *Harry S. Bronson*
 COUNTY SURVEYOR

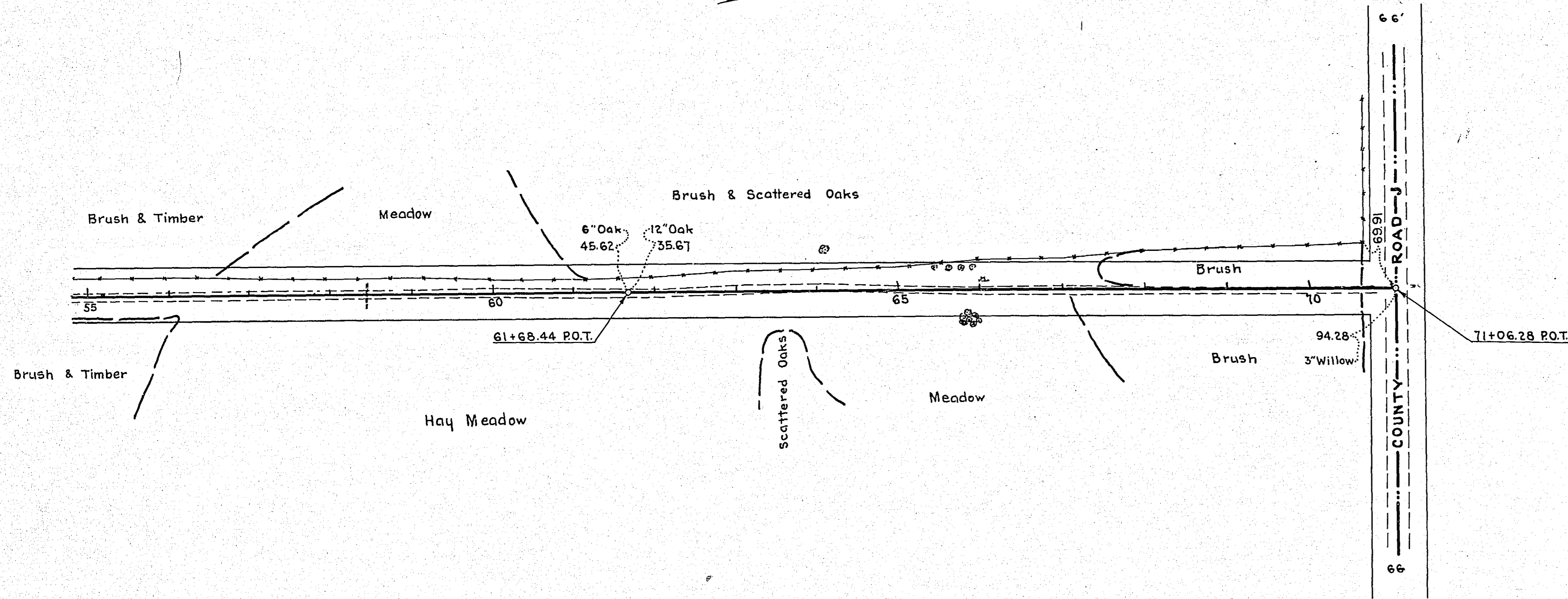
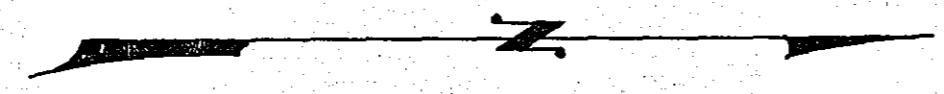
APPROVED 1938 *W. H. Callow*
 CHAIRMAN COUNTY BOARD

PLAN
 SURVEYED BY
 PLOTTED BY
 NOTE BACK ALIGNMENT CHANGES
 S. BY NOTED
 NO. 10

PROFILE
 SURVEYED BY
 PLOTTED BY
 NOTE BACK ALIGNMENT CHANGES
 S. BY NOTED
 NO. 10



58+47 ±
 Inp. 12" x 32'
 Rem.
 Pl. 18" x 42' Conc.



PLAN	REVISION	DATE
NO.	BY	
NOTE BOOK	DATE	
NO.		

PROFILE	REVISION	DATE
NO.	BY	
NOTE BOOK	DATE	
NO.		

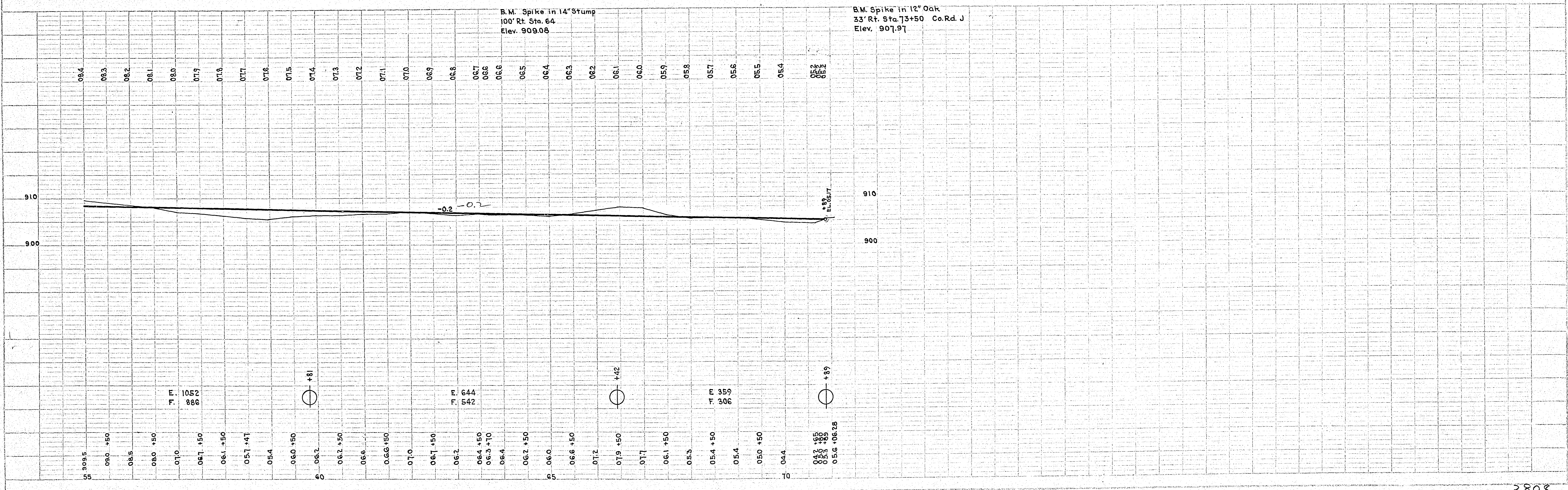


PLATE 1 - PLAN-PROFILE, 1/2" = 1' HORIZ., 1" = 10' VERT.
 HUNTER & TRACY CO., NEW YORK