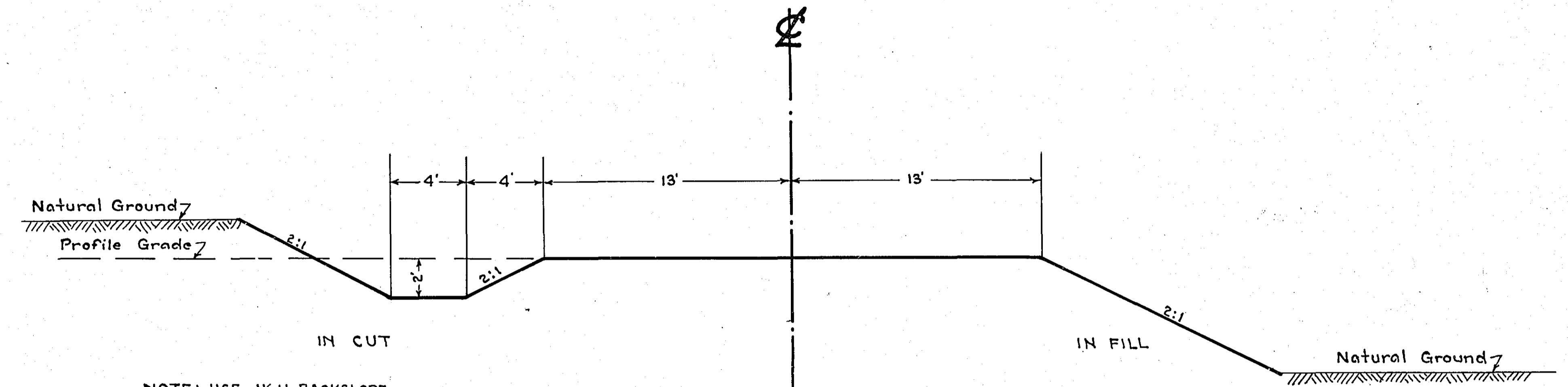


STATEMENT OF ESTIMATED QUANTITIES

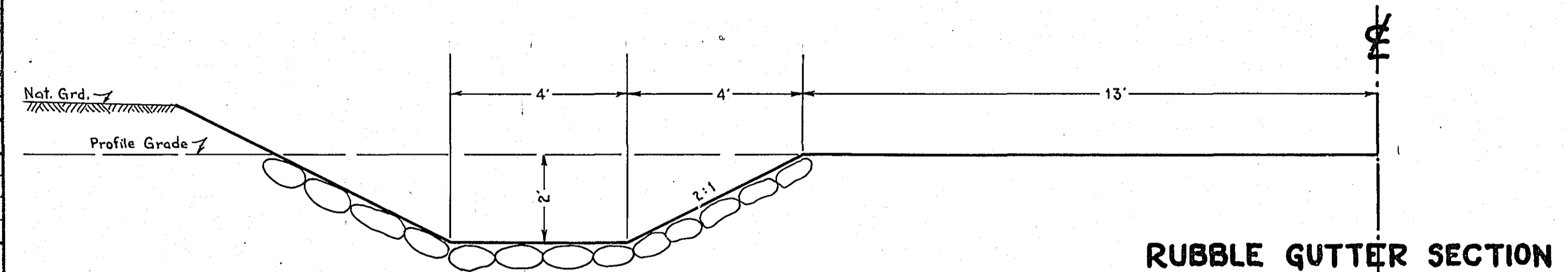
CLASS	ITEM	UNIT	MILE From To	MILE From To	MILE From To	MILE From To	MILE From To	MILE From To	MILE From To	MILE From To	MILE From To	MILE From To	TOTAL ESTIMATED QUANTITIES
GRADING	1	Clearing	Trees										
	2	Grubbing	Trees										
	3	Clearing	Acres										
	4	Grubbing	Acres										
	5	Excavation	Earth	Cu. Yds.									
	6	Excavation	Loose Rock	Cu. Yds.									
	7	Excavation	Solid Rock	Cu. Yds.									
	8	Excavation	Overhaul	Cu. Yds.									
	9	Excavation	Special	Cu. Yds.									
	10	Excavation	Hand Ditch	Cu. Yds.									
	11	Install	12" C.M.	Lin. Ft.									
	12	Install	15" C.M.	Lin. Ft.									
	13	Install	18" C.M.	Lin. Ft.									
	14	Install	24" C.M.	Lin. Ft.									
	15	Install	18" Ps	Lin. Ft.									
	16	Install	24" Ps	Lin. Ft.									
	17	Install	30" Ps	Lin. Ft.									
	18	Install	36" Ps	Lin. Ft.									
	19	Install	18" Ps	Lin. Ft.									
	20	Install	24" Ps	Lin. Ft.									
	21	Install	30" Ps	Lin. Ft.									
	22	Install	36" Ps	Lin. Ft.									
	23	Remove Old Culvert	Lin. Ft.										
	24	Replace Old Culvert	Lin. Ft.										
	25	Finishing and Seeding	100 Sq.Yds										
	26	Rubble Gutter	Cu. Yds.										
	27	Headwall Concrete	Cu. Yds.										
	28	Headwall Steel	Lbs.										
	29												
	30												
	31												
	32												
C.M. CULVERTS	1	Furnish 12" C.M.	Lin. Ft.										
	2	Furnish 15" C.M.	Lin. Ft.										
	3	Furnish 18" C.M.	Lin. Ft.										
	4	Furnish 24" C.M.	Lin. Ft.										
	5	Furnish	Lin. Ft.										
	6	Furnish	Lin. Ft.										
	7	Furnish 12" C.M. Band	Each										
	8	Furnish 15" C.M. Band	Each										
	9												
	10												
P ₃ CULVERTS	1	Furnish 18" P ₃	Lin. Ft.										
	2	Furnish 24" P ₃	Lin. Ft.										
	3	Furnish 30" P ₃	Lin. Ft.										
	4	Furnish 36" P ₃	Lin. Ft.										
	5												
	6												
GUARD RAIL	1	Guard Rail - Cable	Lin. Ft.										
	2	Guard Rail Anchors	Each										
	3	Dummy Posts	Each										
	4												
SIDEWALKS AND CURBING	1	Concrete Curb - Straight	Lin. Ft.										
	2	Concrete Curb - Radius	Lin. Ft.										
	3	Remove Old Curb	Lin. Ft.										
	4	Remove Old Curb and Gutter	Lin. Ft.										
	5	Remove Old Sidewalk	Sq. Ft.										
	6	Replace Old Sidewalk	Sq. Ft.										
	7	Construct New Sidewalk	Sq. Ft.										
	8	Curb Inlet	Each										
	9	Catch Basin Complete	Each										
	10												
	11												
	12												
SEWER	1	12" Vitrified Sewer Pipe	Lin. Ft.										
	2	15" Vitrified Sewer Pipe	Lin. Ft.										
	3	18" Vitrified Sewer Pipe	Lin. Ft.										
	4	20" Vitrified Sewer Pipe	Lin. Ft.										
	5	24" Vitrified Sewer Pipe	Lin. Ft.										
	6	Manhole Complete	Each										
	7	Catch Basin Complete	Each										
8													
9													
10													
SURFACE	1	Loading Gravel	Cu. Yds.										
	2	Hauling Gravel	C.Y. Mi.										
	3	Shaping & Compacting	Cu. Yds.										
	4	Oil	Gal.										
	5	Cut-back	Sq. Yds.										
	6												
	7												
	8												
STRUCTURES	1	Concrete	Cu. Yds.										
	2	Reinforcing Steel	Lbs.										
	3	Excavation	Cu. Yds.										
	4	Piling	Lin. Ft.										
	5												
	6												
	7												
	8												
	9												
	10												

DETAILS



NOTE: USE 1 1/2:1 BACKSLOPE
STA. 0+80 TO STA. 1+38 LT.
STA. 0+21 TO STA. 1+38 RT.

TYPICAL SECTION



NOTE: BACKSLOPE TO BE RIPRAPPED
IN FRONT OF TREE STA. 1+20 LT.

RUBBLE GUTTER SECTION

STA. 0+30 TO STA. 2+00
RIGHT & LEFT

OFFICE OF
RAMSEY COUNTY SURVEYOR
HARRY S. BRONSON

GRADING PLAN OF
MISSISSIPPI STREET. Berwood Ave
FROM EDGERTON ST. TO LABORE RD.

OCT. 1938 SCALE AS SHOWN.

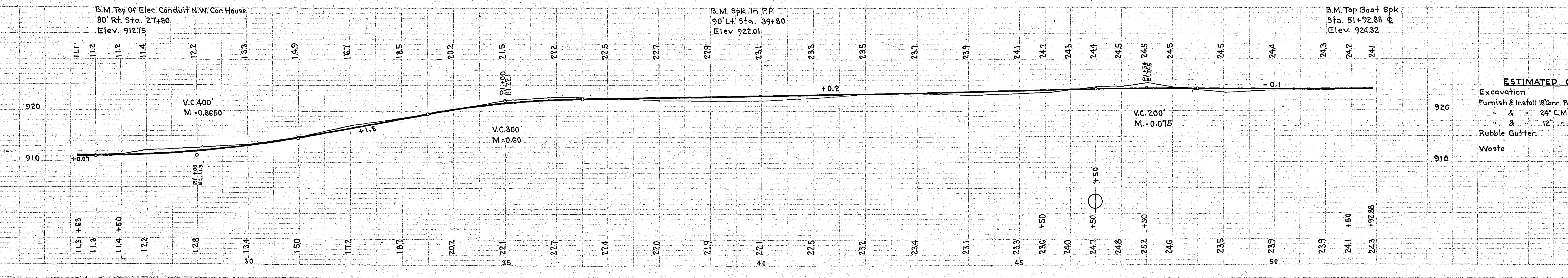
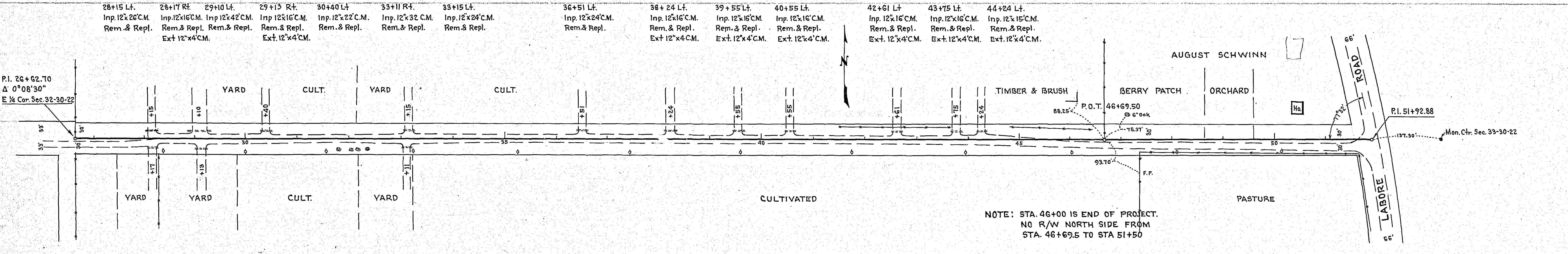
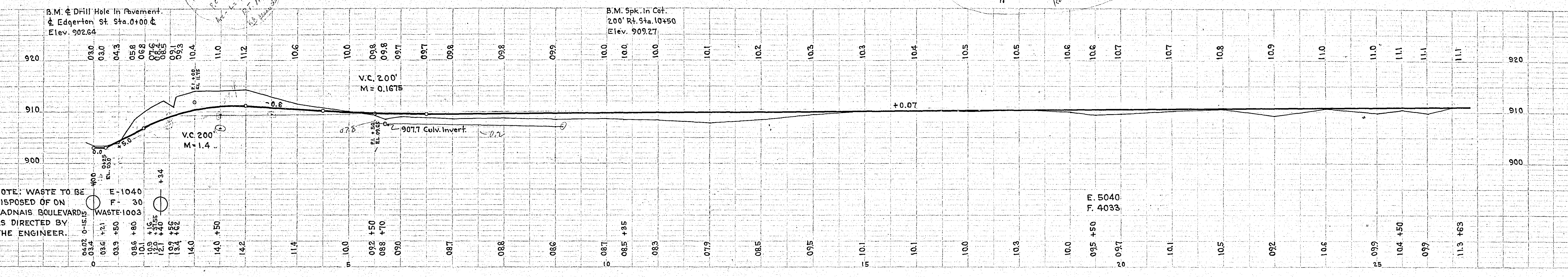
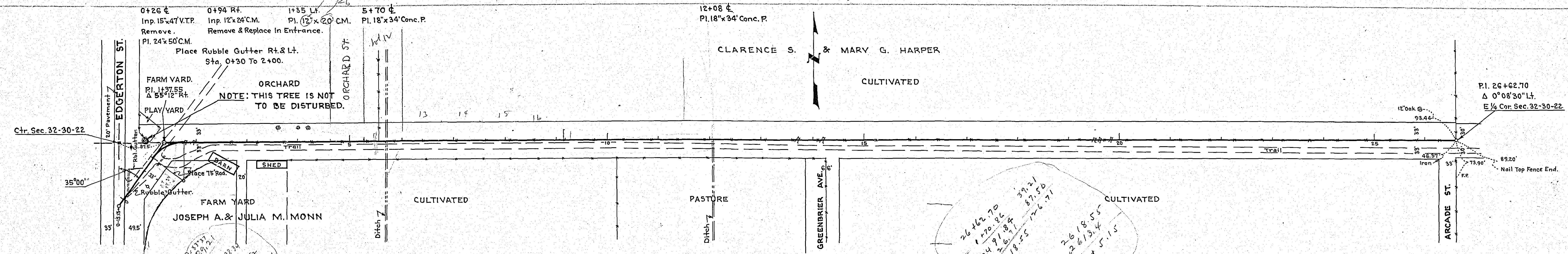
PLANS APPROVED 10/4/1938 *Harry S. Bronson*
COUNTY SURVEYOR

APPROVED 10/4/1938 *Richard Janssen*
CHAIRMAN WHITE BEAR TOWNSHIP BOARD

APPROVED / 1938 *W. H. Fallon*
CHAIRMAN COUNTY BOARD.

PLAN
 EXHIBIT
 NOTE: LOCALITY MAP IS NOT CHECKED

PROFILE
 EXHIBIT
 NOTE: LOCALITY MAP IS NOT CHECKED



ESTIMATED QUANTITIES	
Excavation	Cu. Yds. 6080
Furnish & Install 18" Conc. Pipe, Lin. Ft.	68
" " " 24" C.M. " " "	50
" " " 12" " " " "	52
Rubble Gutter	Cu. Yds. 50
Waste	" " 1003

Oct. 1938

PLAN	DATE
BY	
CHECKED	
APPROVED	
DATE	
BY	
CHECKED	
APPROVED	
DATE	
BY	
CHECKED	
APPROVED	
DATE	

PROFILE	DATE
BY	
CHECKED	
APPROVED	
DATE	
BY	
CHECKED	
APPROVED	
DATE	

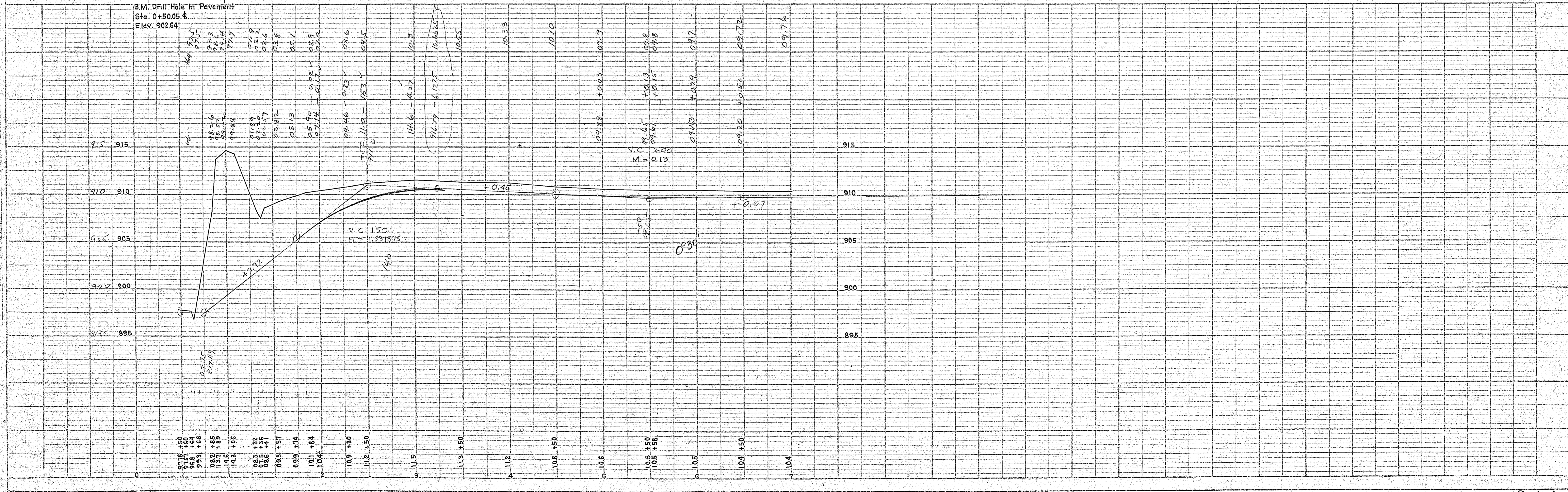
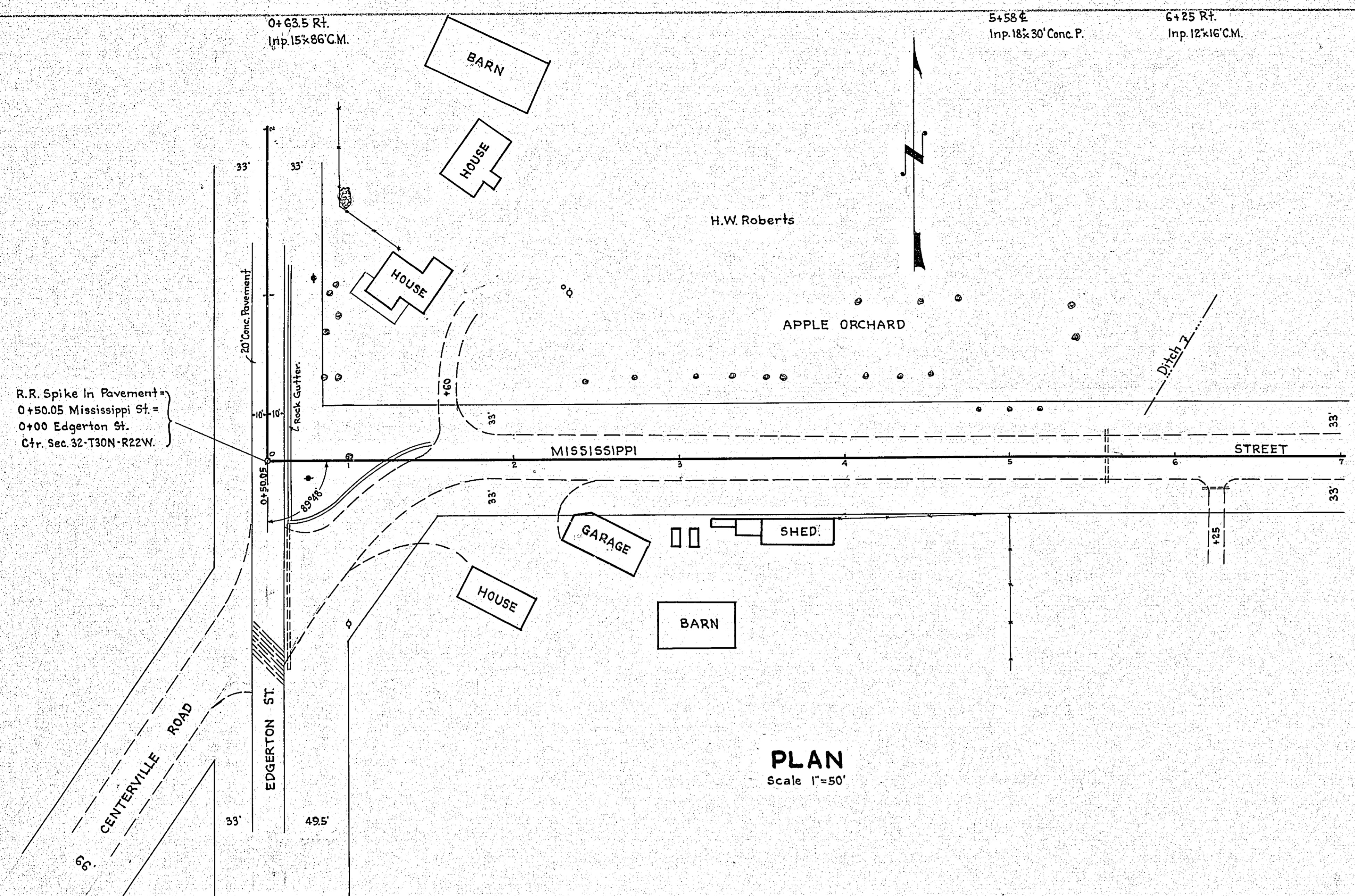


PLATE 1-PLAN-PROFILE O.P.R. & E. STANDARD

H.W. Roberts Route 4 - beyond Bluff Sta. Town 17048