

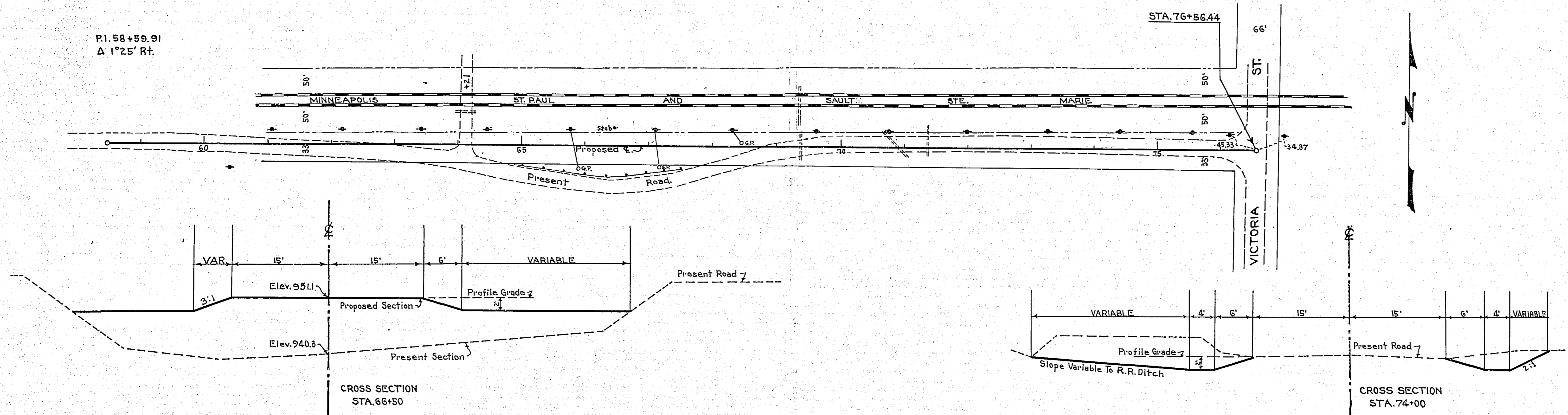
64+21 Lt.  
Inp. 12"X22' V.P.  
Rem.  
Pl. 15"X20' C.M.

69+49 ±  
Inp. 15" C.M.  
Rem.  
No culv. reqd.

70+98 ±  
Inp. 12"X55' C.M.  
Rem.  
No culv. reqd.

71+50 ±  
Inp. 24"X46' C.M.  
Rem. & Repl.

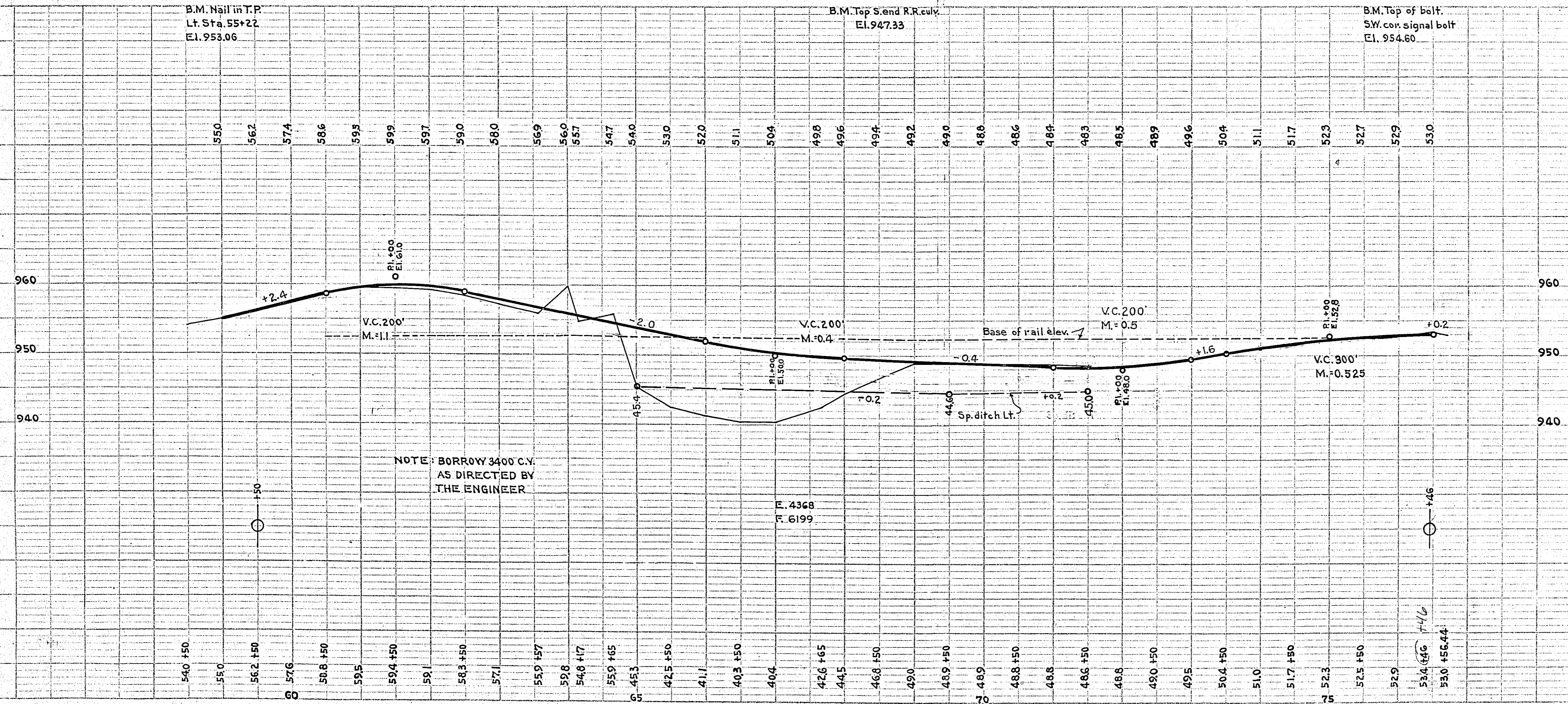
P.I. 58+59.91  
Δ 1°25' Rt.



B.M. Nail in T.P.  
Lt. Sta. 55+22  
Elev. 953.06

B.M. Top S. end R.R. culv.  
Elev. 947.33

B.M. Top of bolt  
SW. cor. signal bolt  
Elev. 954.60



**ESTIMATED QUANTITIES**

Excavation	Cu. Yds.	4366
Furnish & Install 15" C.M.	Lin. Ft.	20
Remove Old Culv.	Lin. Ft.	123
Borrow	Cu. Yds.	3400

OFFICE OF  
RAMSEY CO. SURVEYOR  
HARRY S. BRONSON  
PLAN FOR LINE REVISION  
**COUNTY ROAD "E"**  
SCALE 1"=100' MARCH 1938

APPROVED *Harry S. Bronson*  
COUNTY SURVEYOR  
APPROVED *L. H. Peterson*  
CHAIRMAN COUNTY BOARD