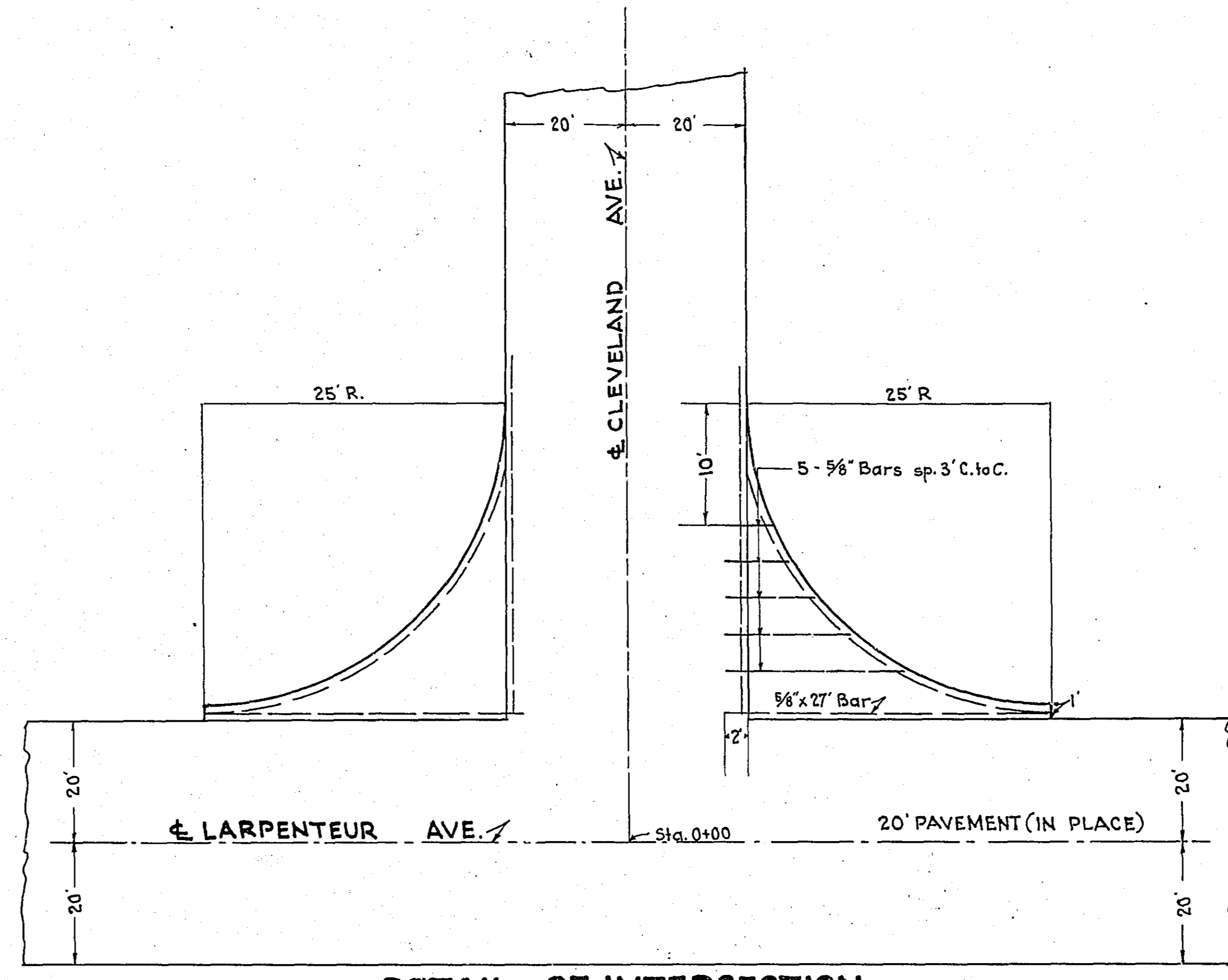
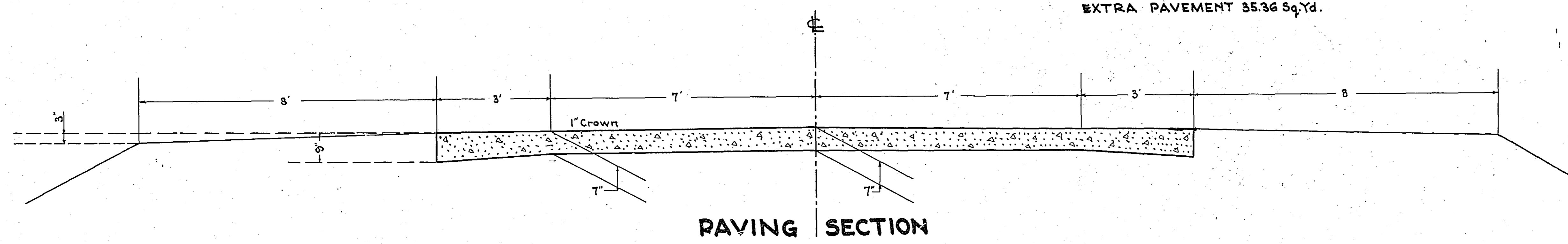


**TOTAL ESTIMATED QUANTITIES**

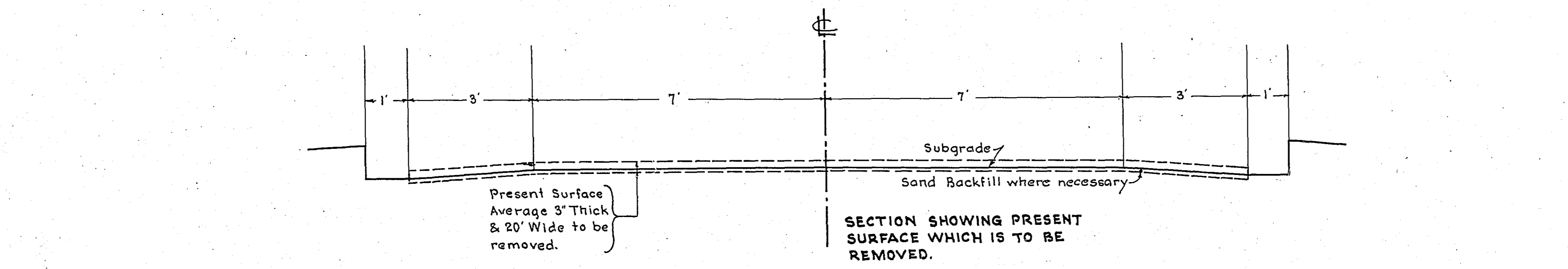
ITEM	UNIT	QUANTITIES		TOTAL ESTIMATED QUANTITIES
		MILE 1	MILE 2	
Clearing	Trees	1		1
Grubbing	Trees	7	3	10
Excavation Earth	Cu.Yds.	3892	3609	7495
Excavation Loose Rock	Cu.Yds.	50	50	100
Excavation Solid Rock	Cu.Yds.	25	25	50
Excavation Overhaul	Cu.Yds.	2493	3301	5794
Excavate present surface material	Cu.Yds.	1028	420	1448
Haul present surface material	C.Y. M.	648	580	1228
Furnish and Install 15" C.M.	Lin.Ft.	100		100
Furnish and Install 24" C.M.	Lin.Ft.		16	16
Furnish and Install 24" C.M. Bands	Each		2	2
Remove old Culvert	Lin.Ft.	240	98	338
Replace old Culvert	Lin.Ft.	70	78	148
<b>GRAVING</b>				
Fine Grading	Cu.Yds.	500	260	760
Concrete Pavement	Sq.Yds.	11457.58	6109.44	17567.02
Surface Drain	Lin.Ft.	85	106	191
Surface Drain Basins	Each	8	10	18
Curb 2"	Lin.Ft.	2300	2500	4800
<b>PAVEMENT</b>				



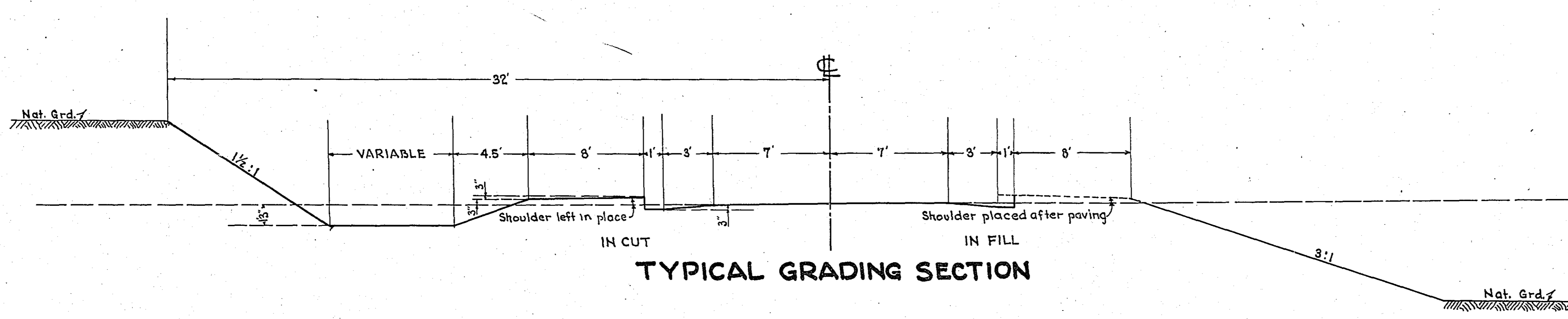
**DETAIL OF INTERSECTION AT LARPEUTEUR**  
 1" = 10'  
 EXTRA PAVEMENT 85.36 Sq.Yd.



**PAVING SECTION**

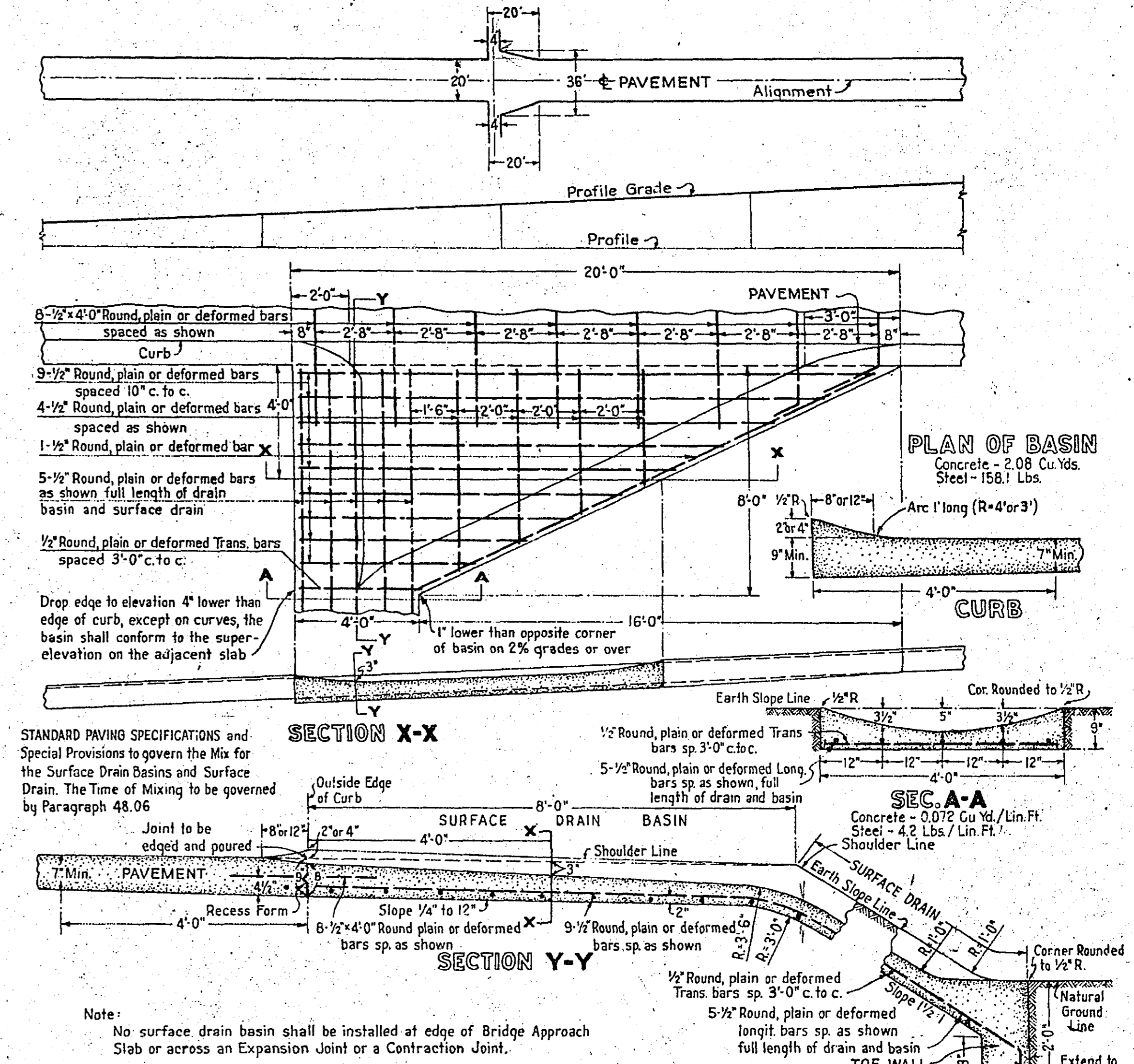


**SECTION SHOWING PRESENT SURFACE WHICH IS TO BE REMOVED.**

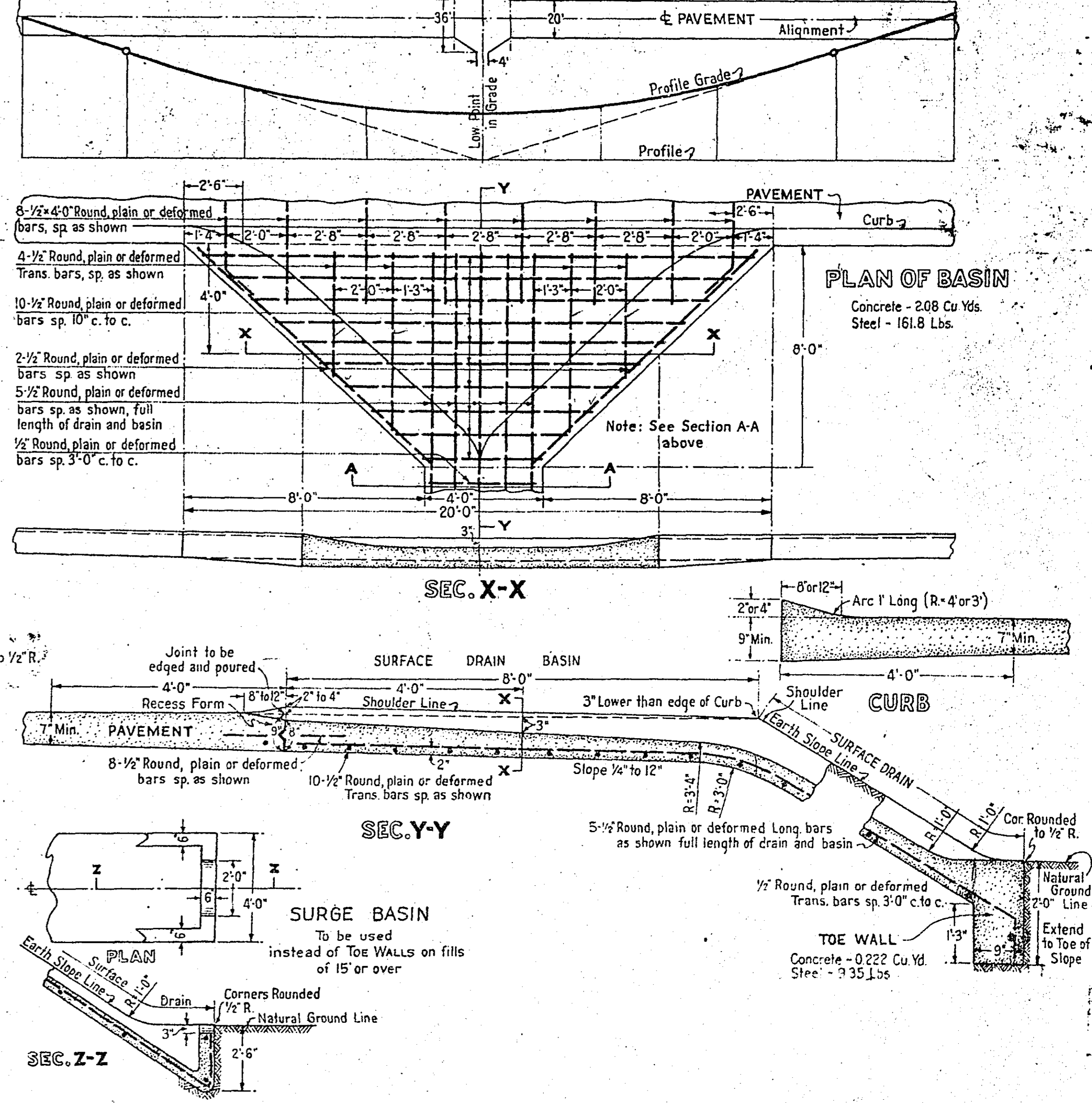


**TYPICAL GRADING SECTION**

**8 FT. SURFACE DRAIN ON GRADE**

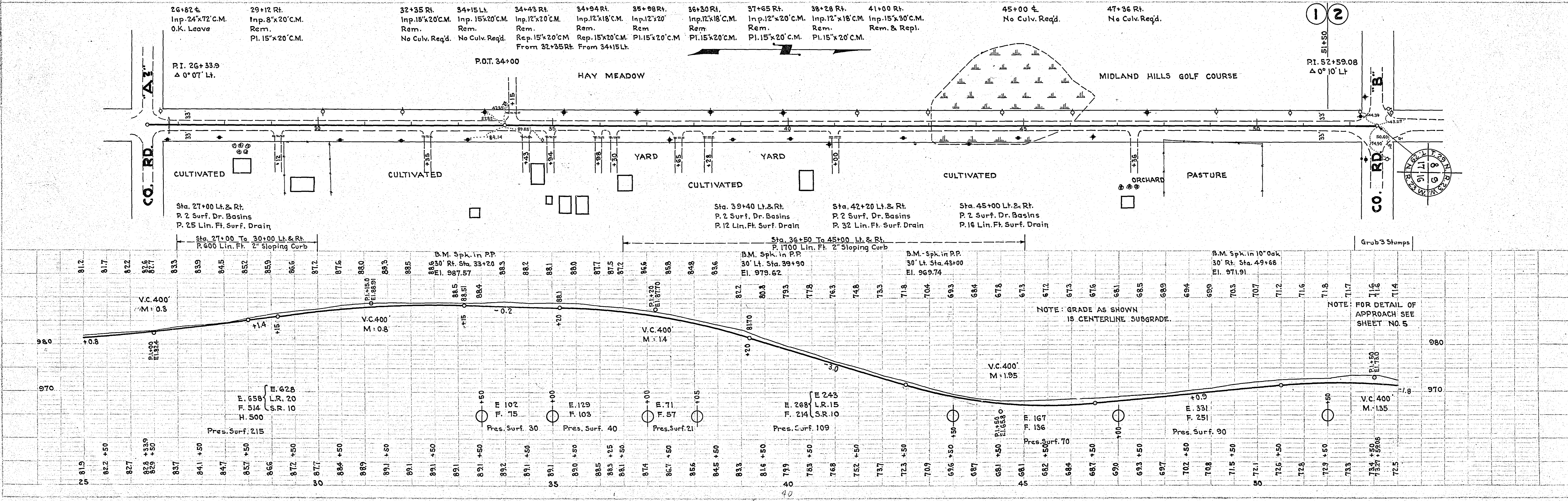
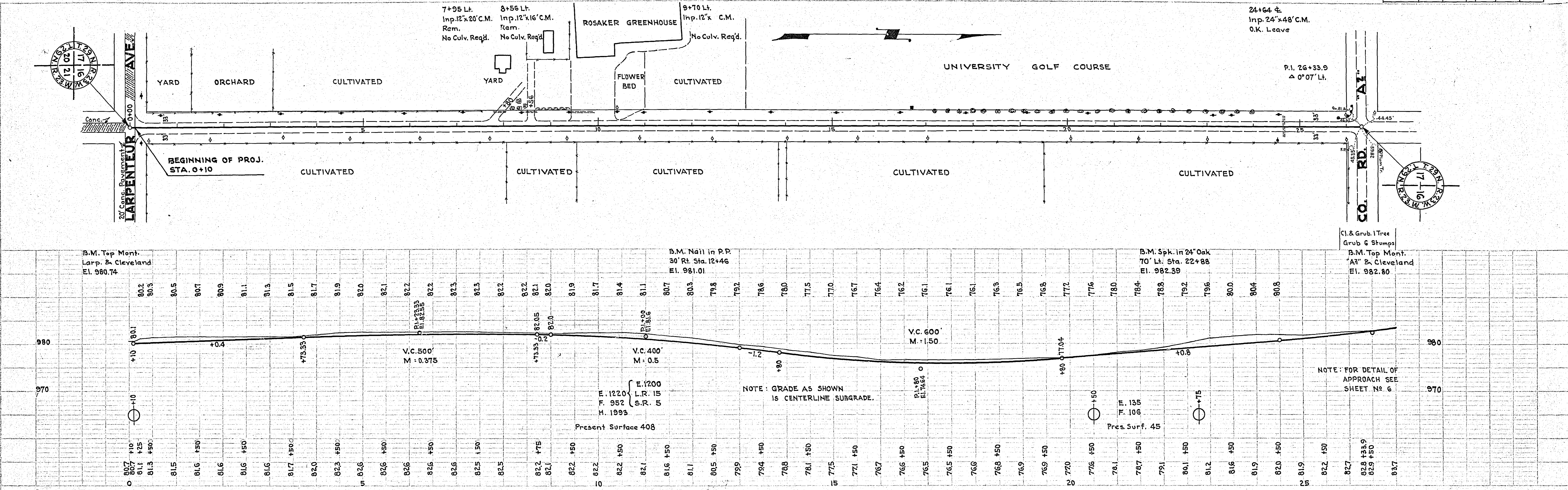


**8 FT. SURFACE DRAIN FOR LOW POINT ON GRADE**



PLAN SURVEYED  
 PLOTTED  
 CHECKED  
 NOTE BOOK REF. BY  
 DATE

PROF. LE SURVEYED  
 PLOTTED  
 CHECKED  
 NOTE BOOK REF. BY  
 DATE



CONVENTIONAL SIGNS & ABBREVIATIONS

STATE LINE	-----	EXCAVATION	.....F
COUNTY LINE	-----	EMBANKMENT	.....F
TOWNSHIP LINE	-----	OVERHAUL	.....H
SECTION LINE	-----	SURFACING	.....S
CITY, VILLAGE, OR BOROUGH	-----	GUARD RAIL	.....GR
FENCE LINE	-----	INTERSECTION ANGLE	.....A
RIGHT-OF-WAY LINE	-----	RADIUS	.....R
TRAVELLED WAY	-----	ELEVATION	.....E.I.
RAILROADS	-----	VERTICAL CURVE	.....V.C.
RETAINING WALL	-----	BENCH MARK	.....B.M.
BASE OR SURVEY LINE	-----	SECTIONAL CONCRETE CULVERT	.....P.C.
LEVEE	-----	CORRUGATED METAL CULVERT	.....C.M.
GRAVEL PIT	.....G	CULVERT HAUL	.....P.H.
SAND PIT	.....S	TON MILES	.....T.M.
CLAY PIT	.....C	PLACE	.....P
ROCK QUARRY	.....R	IN PLACE	.....I.P.
CULVERTS	-----	REPLACE	.....R.P.
PLAIN	-----	RIGHT	.....R
WITH FACEWALLS	-----	LEFT	.....L
WITH WINGWALLS	-----	HAND DITCHING	.....H.D.
DROP INLET	.....D	POINT OF CURVE	.....P.C.
POWER POLE LINE	-----	POINT OF TANGENT	.....P.T.
TELEPHONE OR TELEGRAPH LINE	-----	POINT OF INTERSECTION	.....P.I.
MARSH	.....M	SPECIAL EXCAVATION	.....S.E.
HEDGE, BUSH, OR TIMBER	.....H	SPECIAL FLOWING	.....S.P.
GROUND ELEVATION	.....G	TELEPHONE POLE	.....T.P.
GRADE ELEVATION	.....G		

OFFICE OF COUNTY SURVEYOR

RAMSEY COUNTY

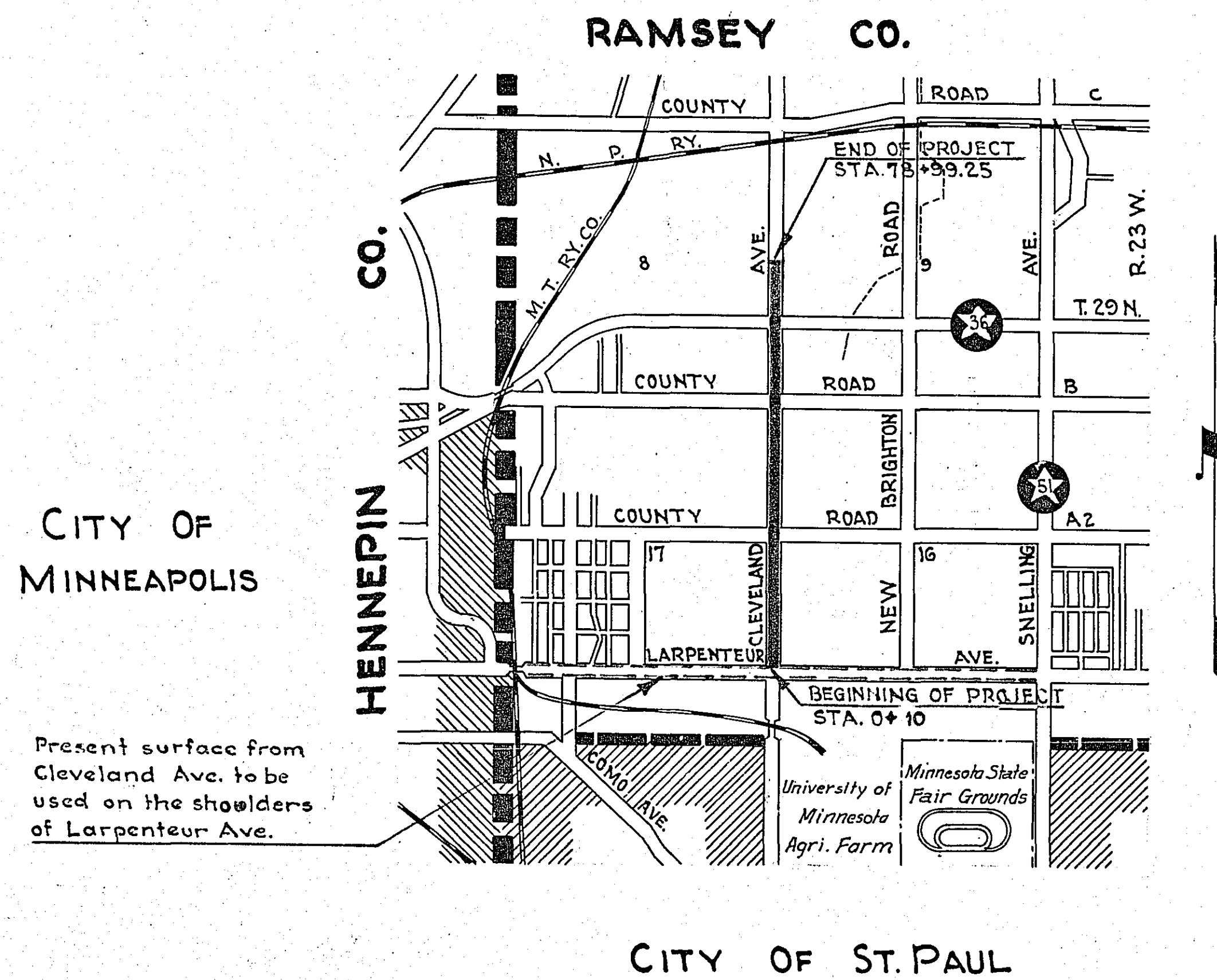
Plan and Profile of Cleveland Ave.

From The S.W. Cor. Sec. 16 T. 29 N. R. 23 W. To The W. 1/4 Cor. Sec. 9 T. 29 N. R. 23 W.

GROSS LENGTH	7889.25 FEET	1.5	MILES
LENGTH OF EXCEPTIONS			
NET LENGTH	7889.25 FEET	1.5	MILES
PLAN	1 Inch = 100 Feet		
PROFILE	Horz. 1 Inch = 100 Feet	Vert. 1 Inch = 10 Feet	
WORKING PLANS	Horz. 1 Inch = 100 Feet	Vert. 1 Inch = 10 Feet	
Cross-Sections	1 Inch = 5 Feet		
LAYOUT			
SCALE	1 Inch = 2640 Feet		

Specifications approved by the Chief of the Bureau of Public Roads Oct. 3, 1929 with Revisions dated Aug. 1, 1934 and approved Oct. 25, 1935 to govern.

MINNESOTA F. A. S. No.

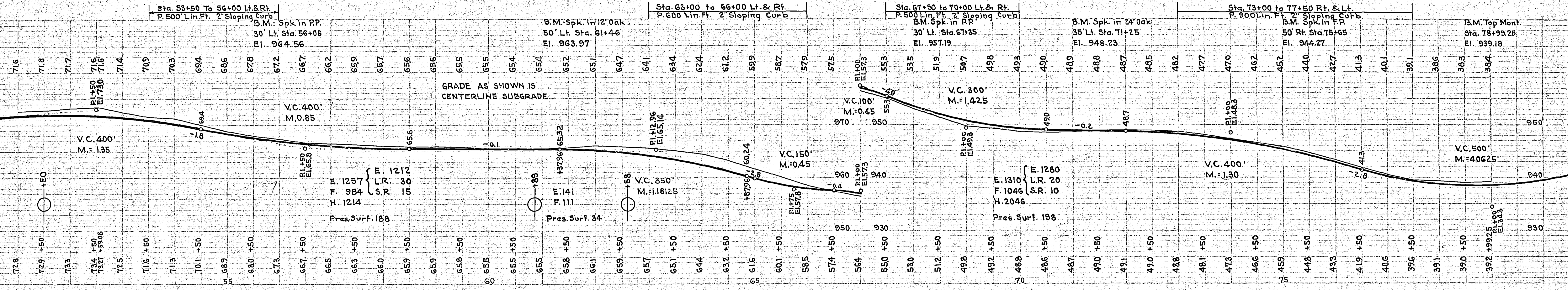
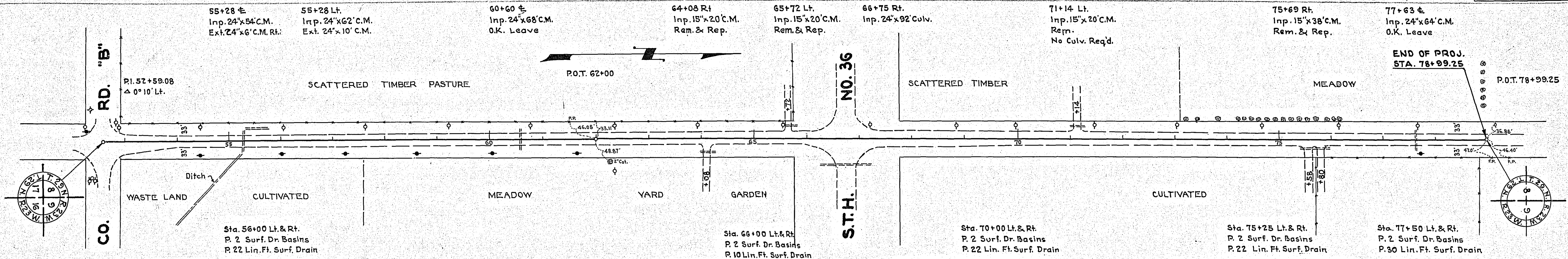


FED. ROAD DIST. NO.	STATE	FED. AID PROJ. NO.	FISCAL YEAR	SHEET NO.	TOTAL SHEETS
4	MINN.			1	19

INDEX OF SHEETS

- Sheet No. 1. Title Sheet and Layout Map
- " No. 2. Typical Cross-Sections and Statement
- " No. 3. Plan and Profile, Sta. 0+10 to Sta. 52+59.08
- " No. 4. Plan and Profile Sta. 52+59.08 to Sta. 78+59.25
- " No. 5. Approach Details
- " No. 6. " " "
- " No. 7. Standard Paving Details
- " No. 8. " " " "
- " No. 9. " " " "
- " No. 10. " " " "
- " No. 11 to 19. Cross Sections

Approved by *Darryl S. Brennan*  
 County Surveyor of **RAMSEY** County  
 Approved by County Board \_\_\_\_\_ 19\_\_\_\_ CHAIRMAN OF COUNTY BOARD  
 Approved \_\_\_\_\_ 19\_\_\_\_ CHIEF ENGINEER MINN. STATE HIGHWAY DEPT  
 Recommended for Approval \_\_\_\_\_ DISTRICT ENGINEER B. of P.R.  
 Recommended for Approval \_\_\_\_\_ CHIEF ENGINEER B. of P.R.  
 Approved \_\_\_\_\_ DIRECTOR B. of P.R.  
 Approved by *M. W. Carley*  
 PRINCIPAL ASST. ENGR.



PLAN  
 SURVEYED  
 PLOTTED  
 NOTE: CHECK ALIGNMENT CHECKED  
 NO. OF POINTS CHECKED

PROFILE  
 SURVEYED  
 PLOTTED  
 NOTE: CHECK GRADE CHECKED  
 NO. OF POINTS CHECKED