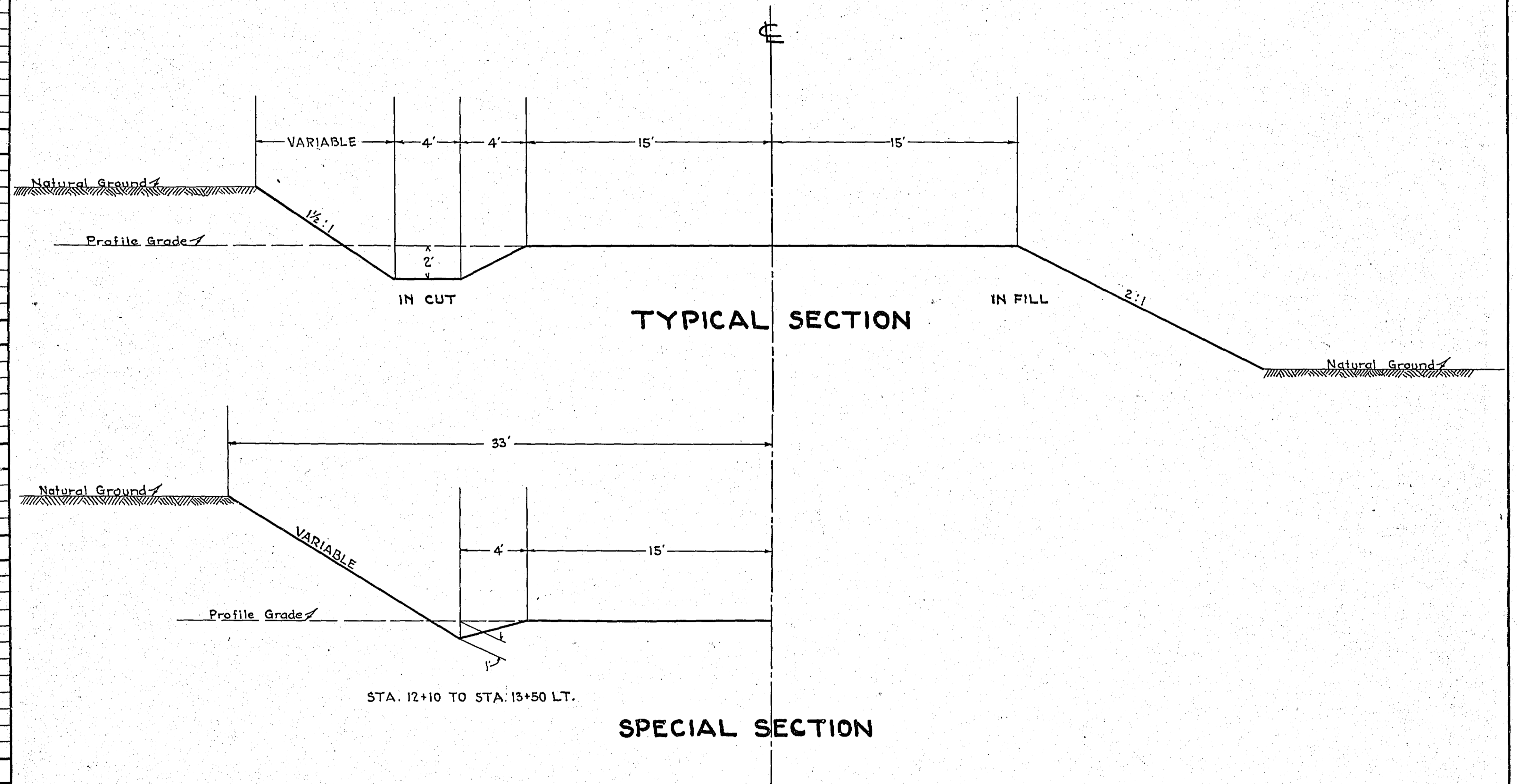


STATEMENT OF ESTIMATED QUANTITIES

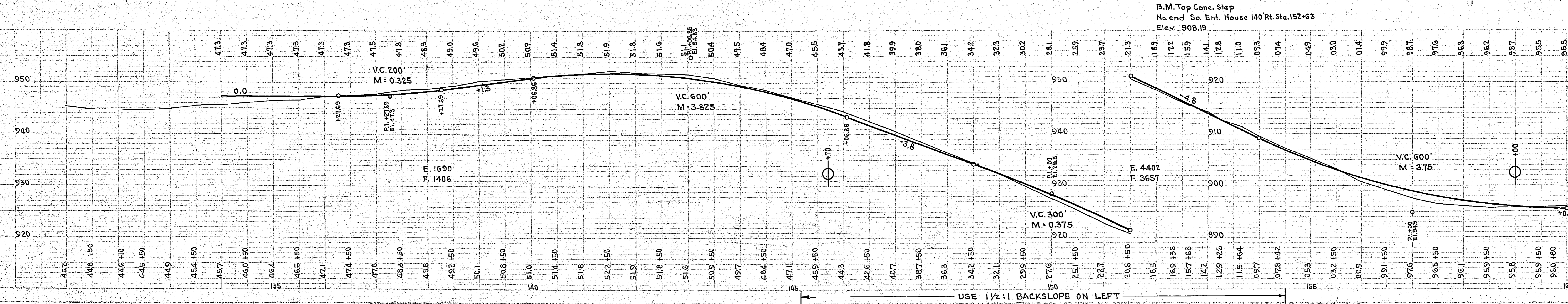
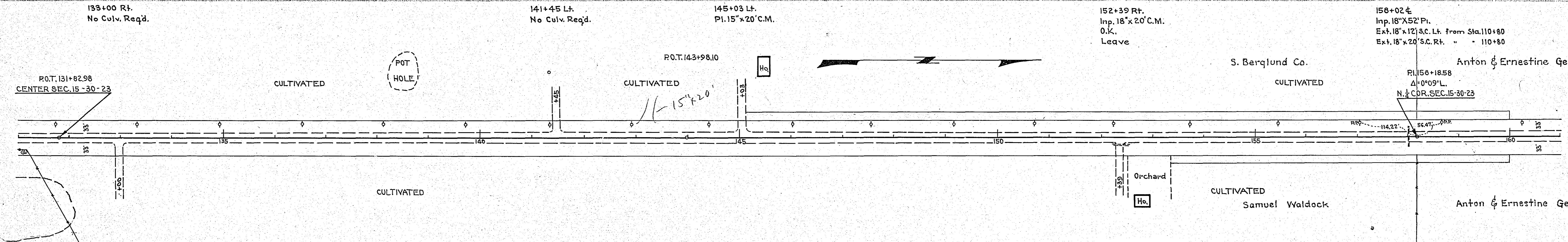
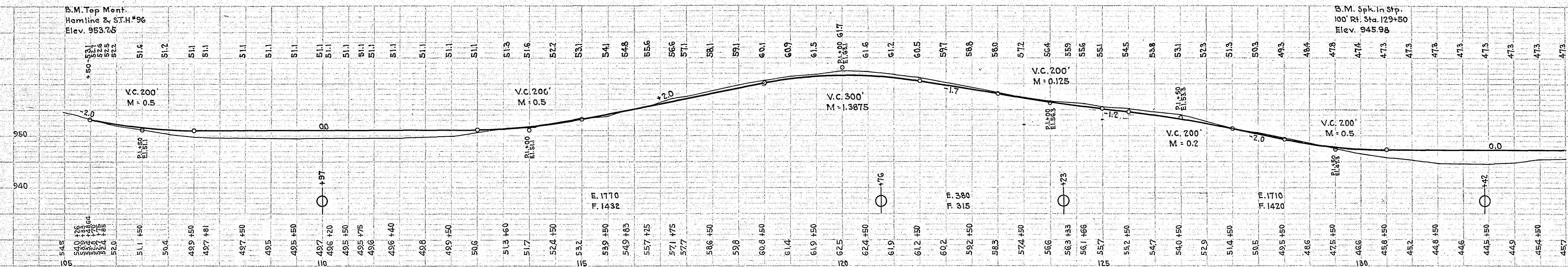
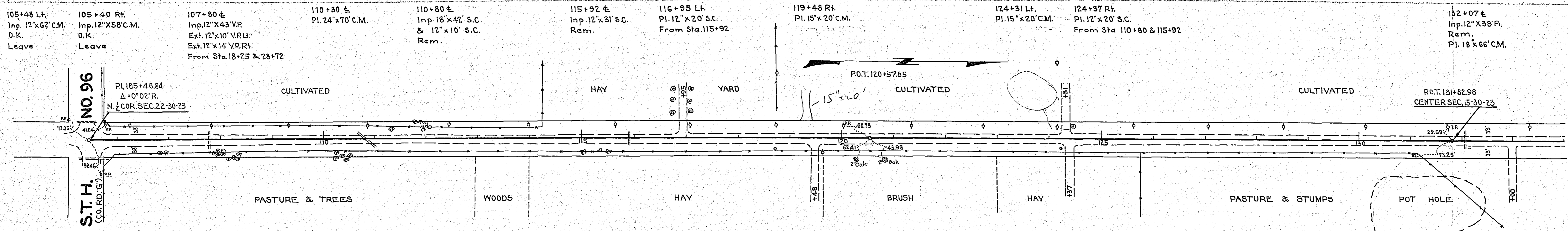
CLASS	ITEM	UNIT	MILE From To	MILE From To	MILE From To	MILE From To	MILE From To	MILE From To	MILE From To	MILE From To	MILE From To	MILE From To	TOTAL ESTIMATED QUANTITIES
GRADING	1	Clearing	Trees										
	2	Grubbing	Trees										
	3	Clearing	Acres										
	4	Grubbing	Acres										
	5	Excavation Earth	Cu. Yds.										
	6	Excavation Loose Rock	Cu. Yds.										
	7	Excavation Solid Rock	Cu. Yds.										
	8	Excavation Overhaul	Cu. Yds.										
	9	Excavation Special	Cu. Yds.										
	10	Excavation Hand Ditch	Cu. Yds.										
	11	Install 12" C.M.	Lin. Ft.										
	12	Install 15" C.M.	Lin. Ft.										
	13	Install 18" C.M.	Lin. Ft.										
	14	Install 24" C.M.	Lin. Ft.										
	15	Install	Lin. Ft.										
	16	Install	Lin. Ft.										
	17	Install 18" Ps	Lin. Ft.										
	18	Install 24" Ps	Lin. Ft.										
	19	Install 30" Ps	Lin. Ft.										
	20	Install 36" Ps	Lin. Ft.										
	21	Install	Lin. Ft.										
	22	Install	Lin. Ft.										
	23	Remove Old Culvert	Lin. Ft.										
	24	Replace Old Culvert	Lin. Ft.										
	25	Finishing and Seeding	100 Sq.Yds.										
	26	Rubble Gutter	Cu. Yds.										
	27	Headwall Concrete	Cu. Yds.										
	28	Headwall Steel	Lbs.										
	29												
	30												
	31												
	32												
C.M. CULVERTS	1	Furnish 12" C.M.	Lin. Ft.										
	2	Furnish 15" C.M.	Lin. Ft.										
	3	Furnish 18" C.M.	Lin. Ft.										
	4	Furnish 24" C.M.	Lin. Ft.										
	5	Furnish	Lin. Ft.										
	6	Furnish	Lin. Ft.										
	7	Furnish 12" C.M. Band	Each										
	8	Furnish 15" C.M. Band	Each										
	9												
	10												
P <sub>3</sub> CULVERTS	1	Furnish 18" Ps	Lin. Ft.										
	2	Furnish 24" Ps	Lin. Ft.										
	3	Furnish 30" Ps	Lin. Ft.										
	4	Furnish 36" Ps	Lin. Ft.										
	5												
	6												
GUARD RAIL	1	Guard Rail - Cable	Lin. Ft.										
	2	Guard Rail Anchors	Each										
	3	Dummy Posts	Each										
	4												
SIDEWALKS AND CURBING	1	Concrete Curb - Straight	Lin. Ft.										
	2	Concrete Curb - Radius	Lin. Ft.										
	3	Remove Old Curb	Lin. Ft.										
	4	Remove Old Curb and Gutter	Lin. Ft.										
	5	Remove Old Sidewalk	Sq. Ft.										
	6	Replace Old Sidewalk	Sq. Ft.										
	7	Construct New Sidewalk	Sq. Ft.										
	8	Curb Inlet	Each										
	9	Catch Basin Complete	Each										
	10												
	11												
	12												
SEWER	1	12" Vitrified Sewer Pipe	Lin. Ft.										
	2	15" Vitrified Sewer Pipe	Lin. Ft.										
	3	18" Vitrified Sewer Pipe	Lin. Ft.										
	4	20" Vitrified Sewer Pipe	Lin. Ft.										
	5	24" Vitrified Sewer Pipe	Lin. Ft.										
	6	Manhole Complete	Each										
	7	Catch Basin Complete	Each										
8													
9													
10													
PAVEMENT	1	Pavement - 1 Course Conc.	Sq. Yds.										
	2	Pavement - Asphaltic Conc.	Sq. Yds.										
	3	Integral Curb 8"	Lin. Ft.										
	4	Integral Curb 12"	Lin. Ft.										
	5	Surface Drain	Each										
	6	Surface Drain Basin	Each										
	7	Shoulders - Earth	Lin. Ft.										
	8												
STRUCTURES	1	Concrete	Cu. Yds.										
	2	Reinforcing Steel	Lbs.										
	3	Excavation	Cu. Yds.										
	4	Piling	Lin. Ft.										
	5												
6													
7													
8													
9													
10													

DETAILS



OFFICE OF  
 RAMSEY COUNTY SURVEYOR  
 HARRY S. BRONSON  
 GRADING PLAN OF  
**HAMLIN AVE.**  
 CO. RD. 'E' TO CO. RD. 'F'  
 SCALE AS SHOWN NOV. 1937

PLANS APPROVED 12/6/1937 *Harry S. Bronson*  
 COUNTY SURVEYOR  
 APPROVED 1937 *M. J. Scham*  
 CHAIRMAN OF COUNTY BOARD



**MILE 3 ESTIMATED QUANTITIES**

Excav.	Cu. Yds.
Install 15" C.M. Lin. Ft.	60
18" C.M.	86
24" C.M.	70

PLAN  
 NOTE BOOK PLACEMENT CHECKED BY  
 DATE

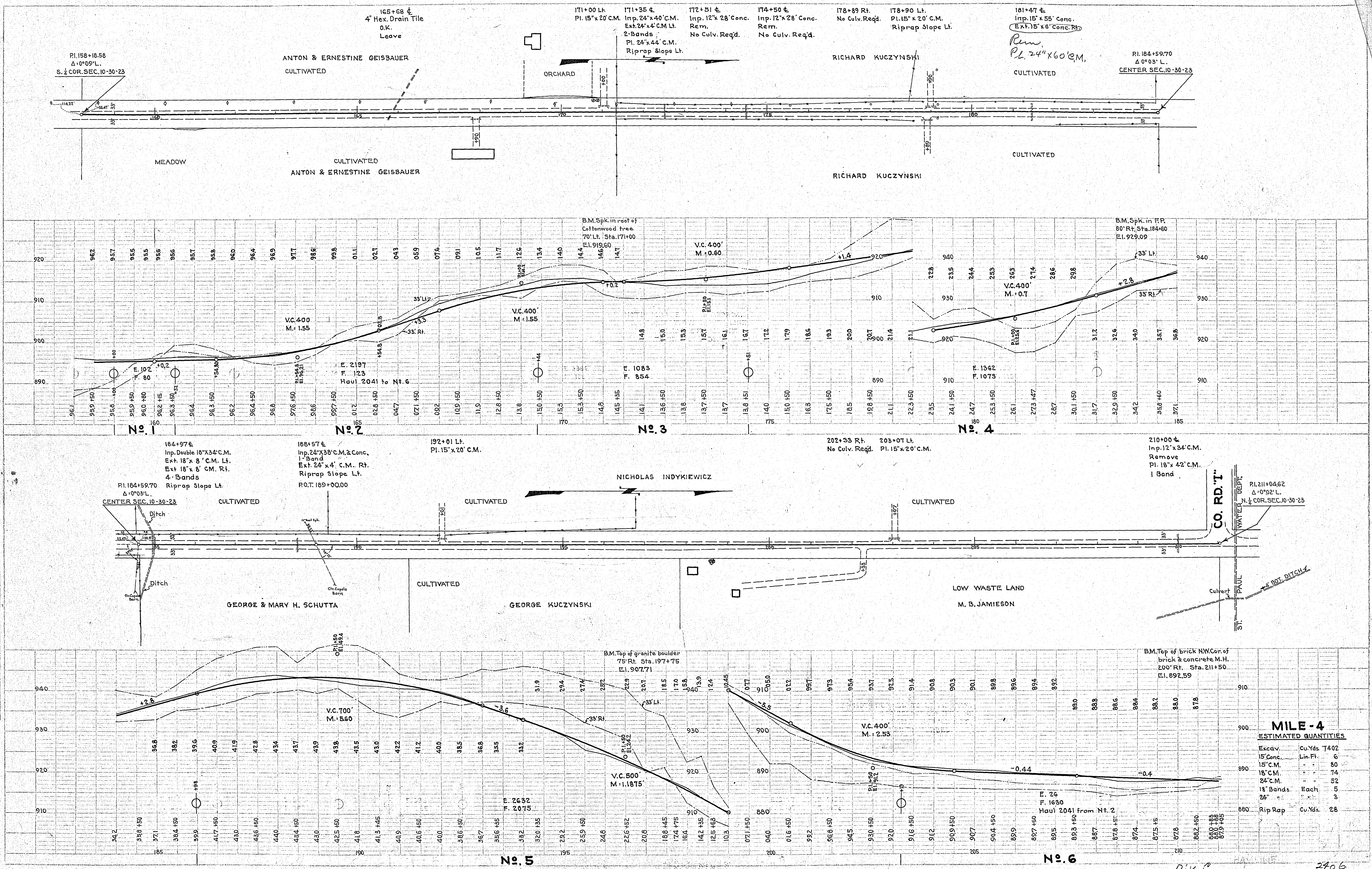
PROFILE  
 NOTE BOOK CHECKED BY  
 DATE

*Hamline Ave*

Div B

PLAN  
 SURVEYED  
 PLOTTED  
 NOTE BOOK, PAGES CHECKED  
 NO. 10713  
 DATE

PROFILE  
 SURVEYED  
 PLOTTED  
 NOTE BOOK, PAGES CHECKED  
 NO. 10713  
 DATE



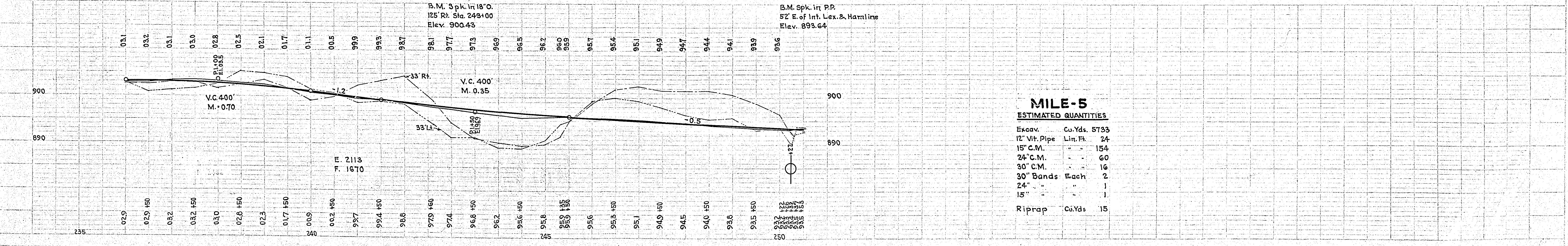
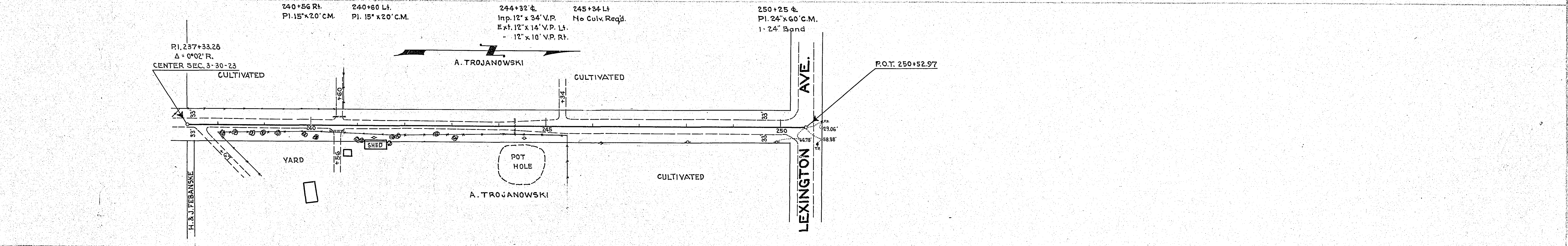
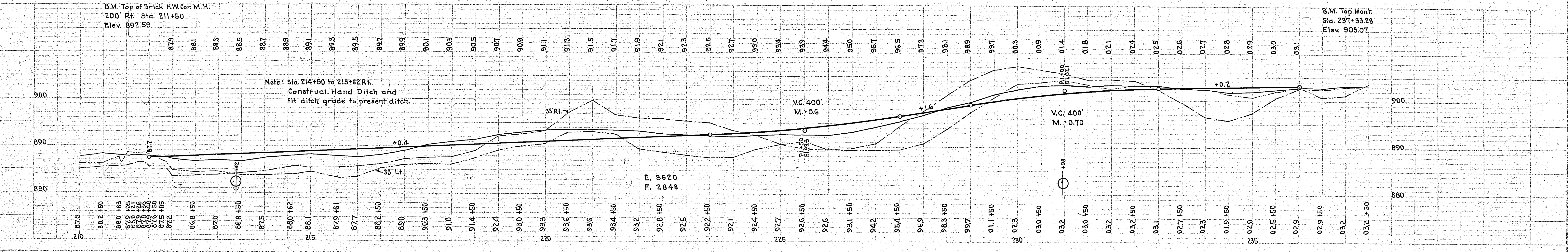
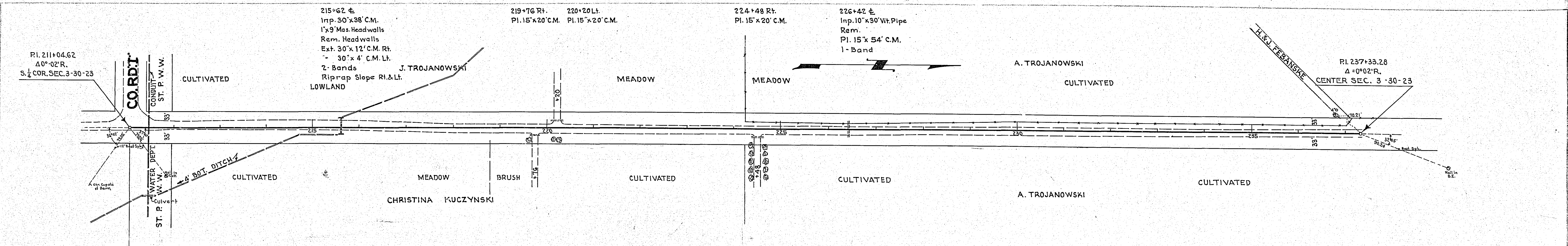
**MILE - 4**  
 ESTIMATED QUANTITIES

Excav.	cu. Yds.	7402
15" Conc.	Lin. Ft.	6
15" C.M.	"	80
18" C.M.	"	74
24" C.M.	"	52
18" Bands	Each	5
24" "	"	3
Rip Rap	cu. Yds.	28

*Hamilton Ave*  
 Div. C.  
 2406  
 SHEET 2 OF 11 SHEETS

PLAN	Sheet No.	57
	Project No.	100-100-100-100
	Section No.	3-30-23
	Stationing	210+00 to 250+00
	Scale	1" = 40'
	Date	
	Drawn by	
	Checked by	
	Approved by	

PROFILE	Sheet No.	57
	Project No.	100-100-100-100
	Section No.	3-30-23
	Stationing	210+00 to 250+00
	Scale	1" = 40'
	Date	
	Drawn by	
	Checked by	
	Approved by	



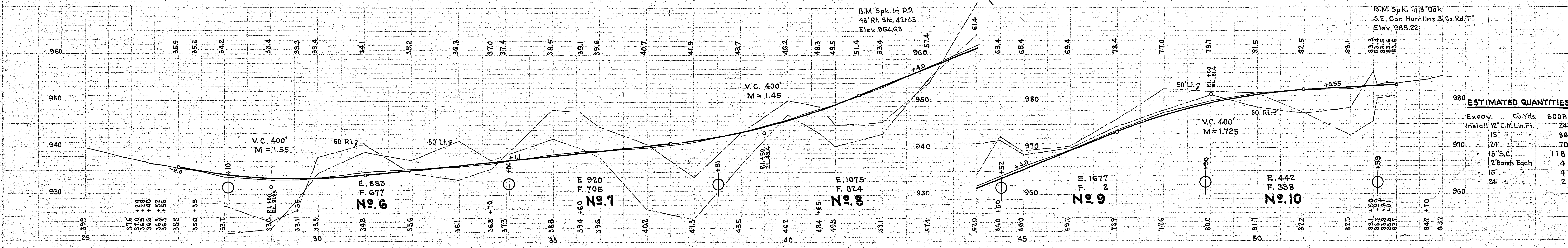
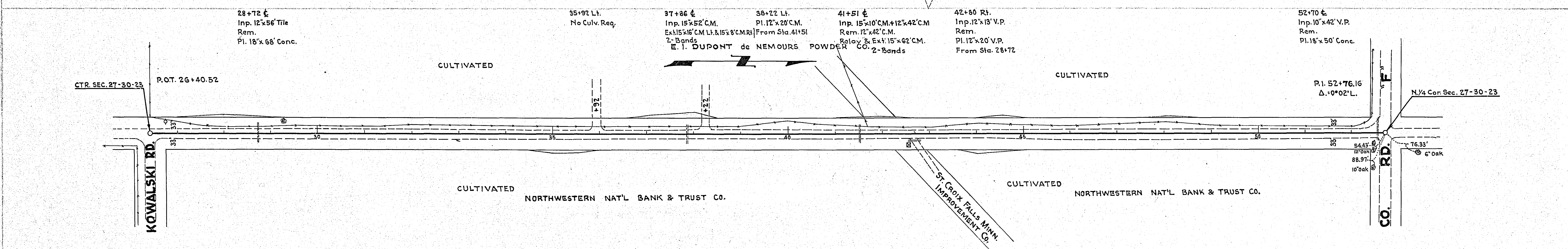
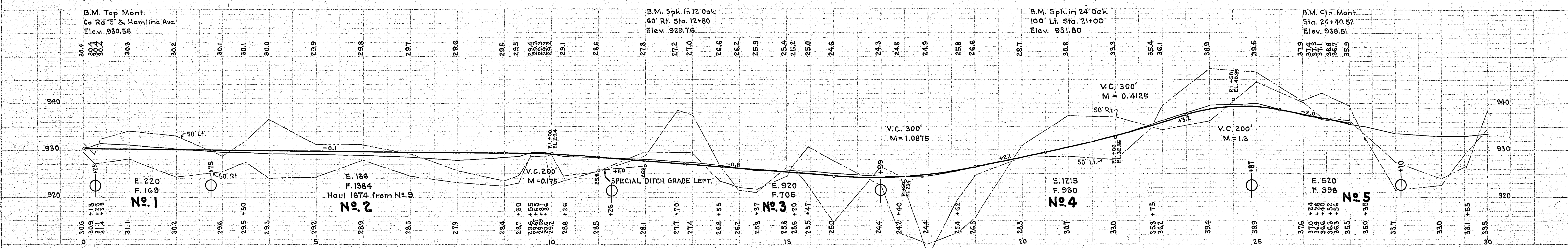
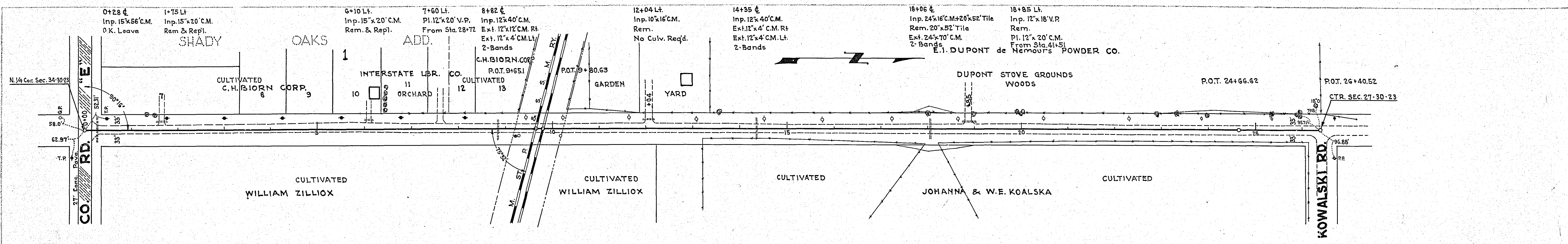
**MILE-5**  
ESTIMATED QUANTITIES

Excav.	Cu.Yds.	5733
12" Vit. Pipe	Lin. Ft.	24
15" C.M.	"	154
24" C.M.	"	60
30" C.M.	"	16
24" Bands	Each	2
24" "	"	1
15" "	"	1
Riprap	Cu.Yds.	15



PLAN  
 DRAWN BY: [ ]  
 CHECKED BY: [ ]  
 DATE: [ ]

PROFILE  
 DRAWN BY: [ ]  
 CHECKED BY: [ ]  
 DATE: [ ]



ESTIMATED QUANTITIES		
Excav.	Cu.Yds.	8008
Install 12" C.M. Lin.Ft.	24	
15"	86	
24"	70	
18" S.C.	118	
12" Bands Each	4	
15"	4	
24"	2	

EXT. LT.  
ELT'S RT.

STEPHEN G. TSCHIDA

55+53 Lt.  
No Culv. Req'd.

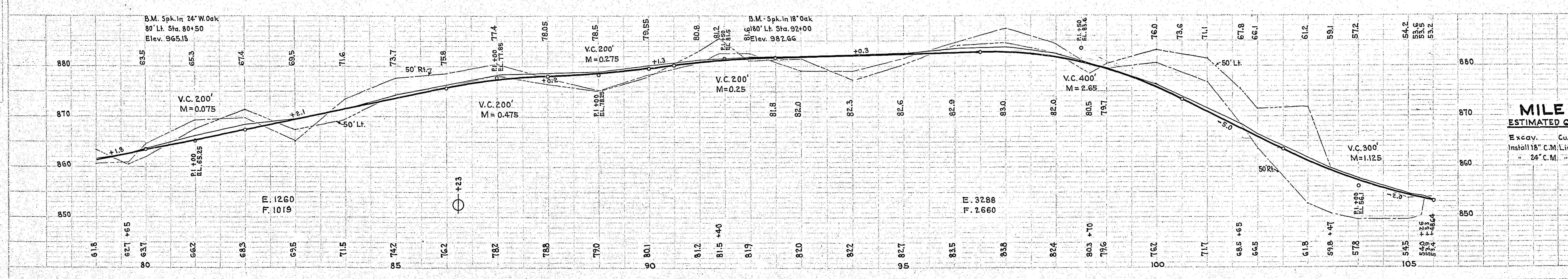
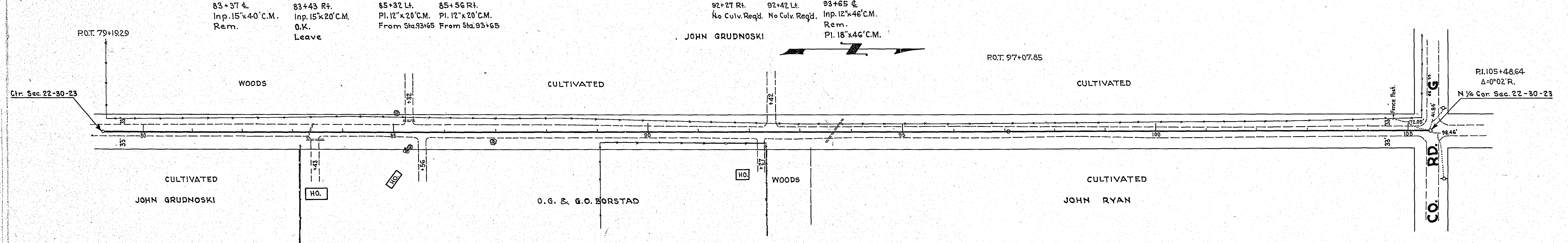
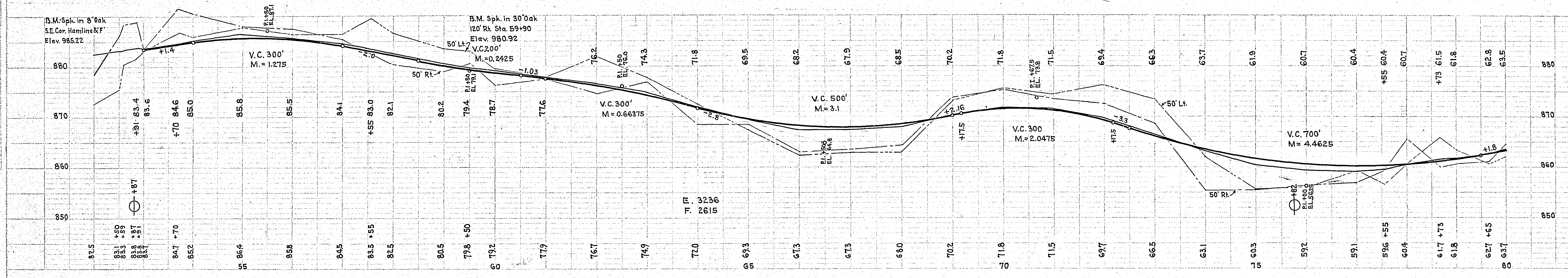
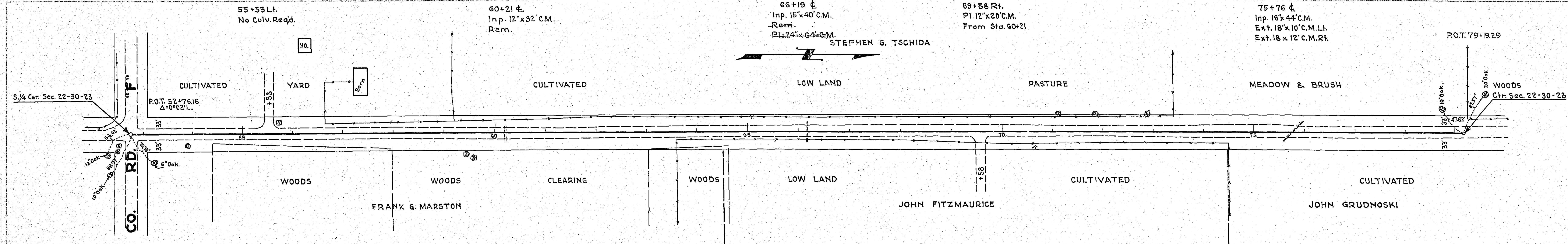
60+21 ±  
Inp. 12"x32' C.M.  
Rem.

66+19 ±  
Inp. 15"x40' C.M.  
Rem.  
PI. 24"x64' C.M.

69+58 Rt.  
PI. 12"x20' C.M.  
From Sta. 60+21

75+76 ±  
Inp. 18"x44' C.M.  
Ext. 18"x10' C.M. Lt.  
Ext. 18"x12' C.M. Rt.

P.O.T. 79+19.29



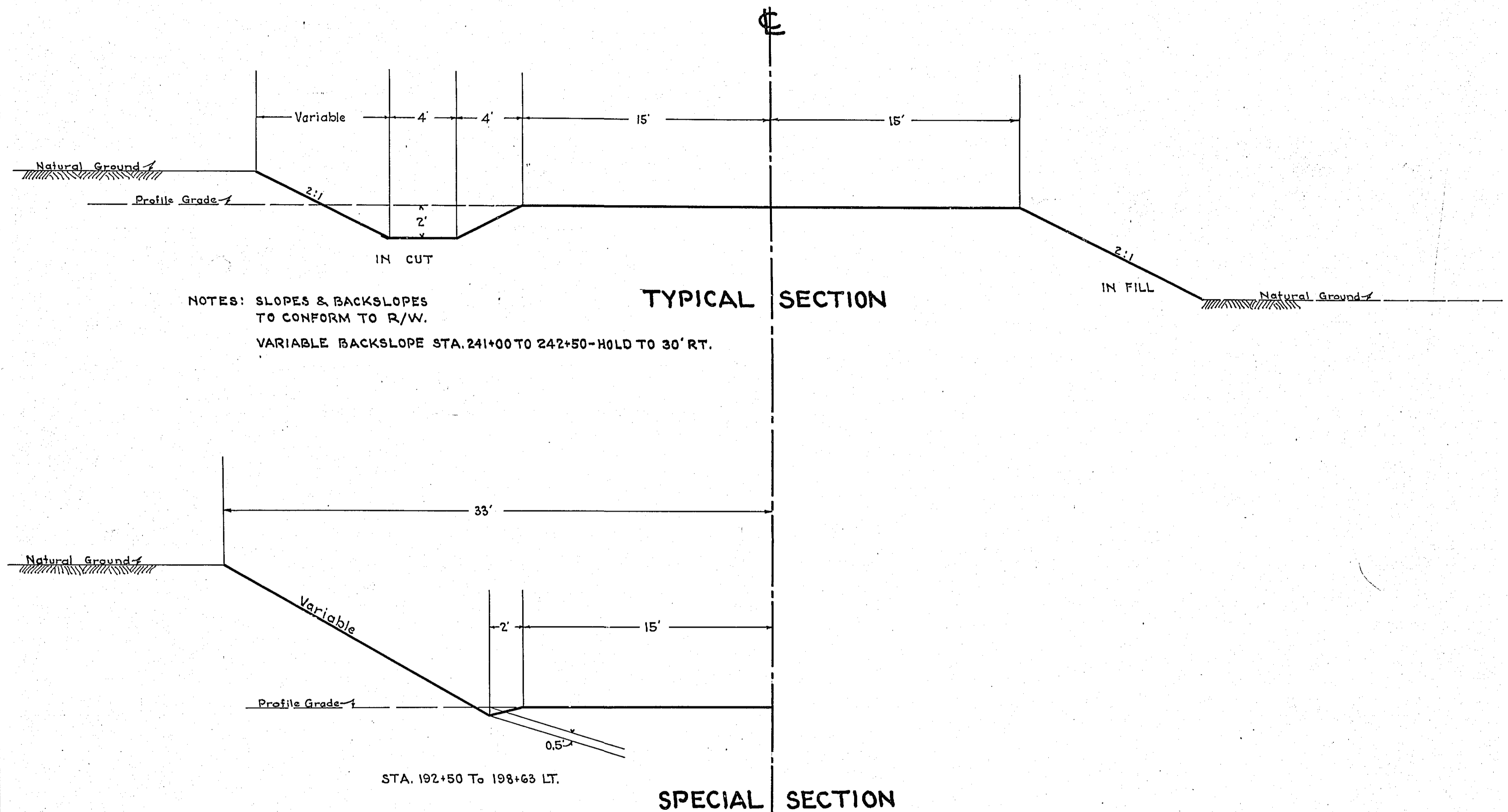
**MILE 2**  
ESTIMATED QUANTITIES

Excav. Cu.Yds. 7784  
Install 18" C.M. Lin.Ft. 68  
" 24" C.M. " " 64

STATEMENT OF ESTIMATED QUANTITIES

CLASS	ITEM	UNIT	MILE From To	MILE From To	MILE From To	MILE From To	MILE From To	MILE From To	MILE From To	MILE From To	MILE From To	MILE From To	TOTAL ESTIMATED QUANTITIES
GRADING	1	Clearing	Trees										
	2	Grubbing	Trees										
	3	Clearing	Acres										
	4	Grubbing	Acres										
	5	Excavation Earth	Cu. Yds.										
	6	Excavation Loose Rock	Cu. Yds.										
	7	Excavation Solid Rock	Cu. Yds.										
	8	Excavation Overhaul	Cu. Yds.										
	9	Excavation Special	Cu. Yds.										
	10	Excavation Hand Ditch	Cu. Yds.										
	11	Install 12" C.M.	Lin. Ft.										
	12	Install 15" C.M.	Lin. Ft.										
	13	Install 18" C.M.	Lin. Ft.										
	14	Install 24" C.M.	Lin. Ft.										
	15	Install	Lin. Ft.										
	16	Install	Lin. Ft.										
	17	Install 18" Ps	Lin. Ft.										
	18	Install 24" Ps	Lin. Ft.										
	19	Install 30" Ps	Lin. Ft.										
	20	Install 36" Ps	Lin. Ft.										
	21	Install	Lin. Ft.										
	22	Install	Lin. Ft.										
	23	Remove Old Culvert	Lin. Ft.										
	24	Replace Old Culvert	Lin. Ft.										
	25	Finishing and Seeding	100 Sq.Yds.										
	26	Rubble Gutter	Cu. Yds.										
	27	Headwall Concrete	Cu. Yds.										
	28	Headwall Steel	Lbs.										
	29												
	30												
	31												
	32												
C.M. CULVERTS	1	Furnish 12" C.M.	Lin. Ft.										
	2	Furnish 15" C.M.	Lin. Ft.										
	3	Furnish 18" C.M.	Lin. Ft.										
	4	Furnish 24" C.M.	Lin. Ft.										
	5	Furnish	Lin. Ft.										
	6	Furnish	Lin. Ft.										
	7	Furnish 12" C.M. Bond	Each										
	8	Furnish 15" C.M. Bond	Each										
	9												
	10												
P <sub>3</sub> CULVERTS	1	Furnish 18" Ps	Lin. Ft.										
	2	Furnish 24" Ps	Lin. Ft.										
	3	Furnish 30" Ps	Lin. Ft.										
	4	Furnish 36" Ps	Lin. Ft.										
	5												
	6												
GUARD RAIL	1	Guard Rail - Cable	Lin. Ft.										
	2	Guard Rail Anchors	Each										
	3	Dummy Posts	Each										
	4												
SIDEWALKS AND CURBING	1	Concrete Curb - Straight	Lin. Ft.										
	2	Concrete Curb - Radius	Lin. Ft.										
	3	Remove Old Curb	Lin. Ft.										
	4	Remove Old Curb and Gutter	Lin. Ft.										
	5	Remove Old Sidewalk	Sq. Ft.										
	6	Replace Old Sidewalk	Sq. Ft.										
	7	Construct New Sidewalk	Sq. Ft.										
	8	Curb Inlet	Each										
	9	Catch Basin Complete	Each										
	10												
	11												
	12												
SEWER	1	12" Vitrified Sewer Pipe	Lin. Ft.										
	2	15" Vitrified Sewer Pipe	Lin. Ft.										
	3	18" Vitrified Sewer Pipe	Lin. Ft.										
	4	20" Vitrified Sewer Pipe	Lin. Ft.										
	5	24" Vitrified Sewer Pipe	Lin. Ft.										
	6	Manhole Complete	Each										
	7	Catch Basin Complete	Each										
8													
9													
10													
PAVEMENT	1	Pavement - 1 Course Conc.	Sq. Yds.										
	2	Pavement - Asphaltic Conc.	Sq. Yds.										
	3	Integral Curb 8"	Lin. Ft.										
	4	Integral Curb 12"	Lin. Ft.										
	5	Surface Drain	Each										
	6	Surface Drain Basin	Each										
	7	Shoulders - Earth	Lin. Ft.										
	8												
STRUCTURES	1	Concrete	Cu. Yds.										
	2	Reinforcing Steel	Lbs.										
	3	Excavation	Cu. Yds.										
	4	Piling	Lin. Ft.										
	5												
	6												
	7												
	8												
	9												
	10												

DETAILS



OFFICE OF  
RAMSEY COUNTY SURVEYOR  
HARRY S. BRONSON  
GRADING PLAN OF  
**HAMLIN AVE.**  
SO. 1/4 COR. SEC. 10-30-23 TO LEXINGTON AVE.  
SCALE AS SHOWN APRIL 1938

PLANS APPROVED 1938 *Harry S. Bronson*  
COUNTRY SURVEYOR  
APPROVED 1938 *J. M. Sear*  
CHAIRMAN OF COUNTY BOARD

DIVISION "C"

2406