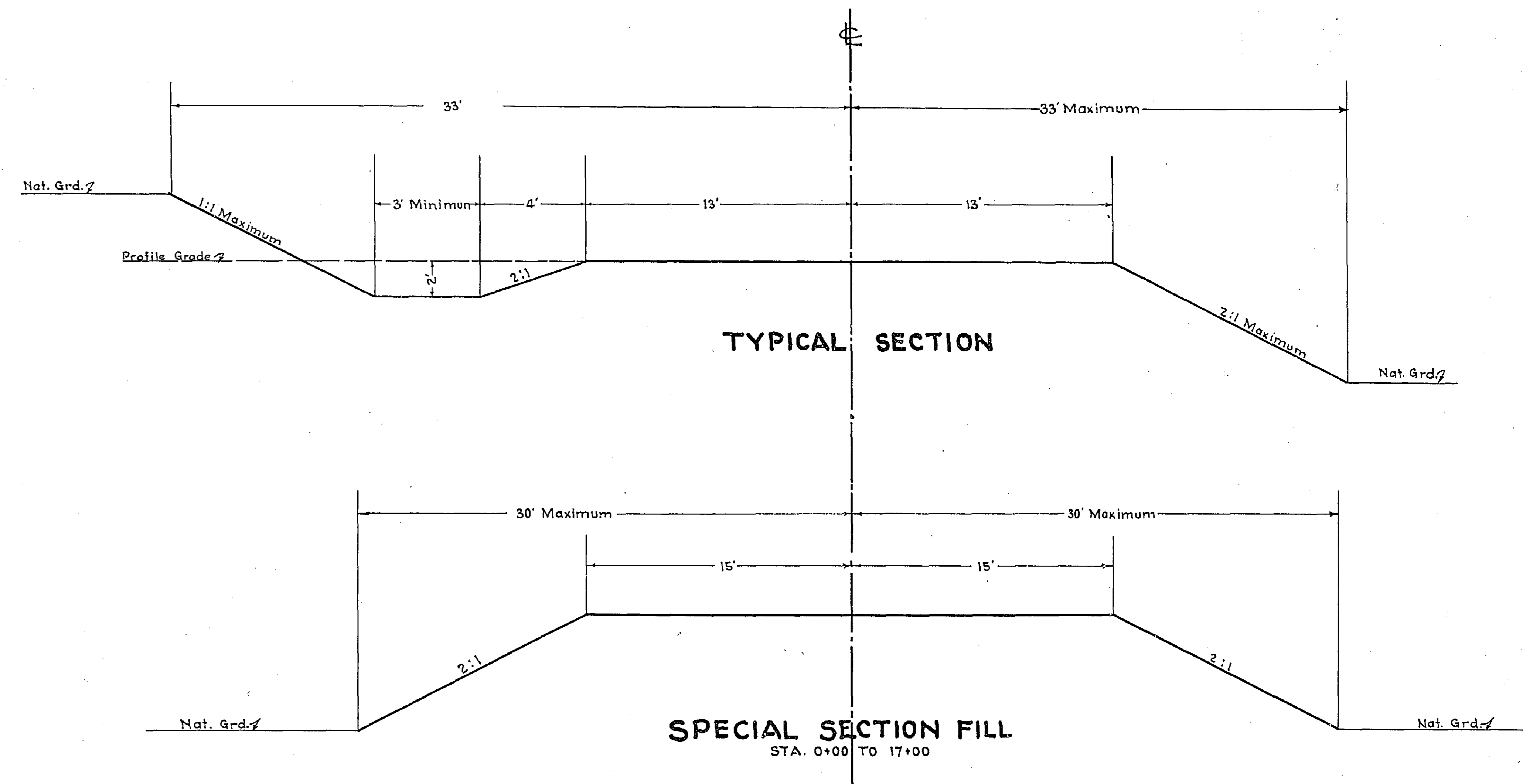


STATEMENT OF ESTIMATED QUANTITIES

CLASS	ITEM	UNIT	MILE										TOTAL ESTIMATED QUANTITIES		
			From To	From To	From To	From To	From To	From To	From To	From To	From To	From To			
GRADING	1 Clearing	Trees													
	2 Grubbing	Trees													
	3 Clearing	Acres													
	4 Grubbing	Acres													
	5 Excavation Earth	Cu. Yds.													
	6 Excavation Loose Rock	Cu. Yds.													
	7 Excavation Solid Rock	Cu. Yds.													
	8 Excavation Overhaul	Cu. Yds.													
	9 Excavation Special	Cu. Yds.													
	10 Excavation Hand Ditch	Cu. Yds.													
	11 Install 12" C.M.	Lin. Ft.													
	12 Install 15" C.M.	Lin. Ft.													
	13 Install 18" C.M.	Lin. Ft.													
	14 Install 24" C.M.	Lin. Ft.													
	15 Install	Lin. Ft.													
	16 Install	Lin. Ft.													
	17 Install 18" P ₃	Lin. Ft.													
	18 Install 24" P ₃	Lin. Ft.													
	19 Install 30" P ₃	Lin. Ft.													
	20 Install 36" P ₃	Lin. Ft.													
	21 Install	Lin. Ft.													
	22 Install	Lin. Ft.													
	23 Remove Old Culvert	Lin. Ft.													
	24 Replace Old Culvert	Lin. Ft.													
	25 Finishing and Seeding	100 Sq.Yds.													
	26 Rubble Gutter	Cu. Yds.													
	27 Headwall Concrete	Cu. Yds.													
	28 Headwall Steel	Lbs.													
	29														
	30														
	31														
	32														
C.M. CULVERTS	1 Furnish 12" C.M.	Lin. Ft.													
	2 Furnish 15" C.M.	Lin. Ft.													
	3 Furnish 18" C.M.	Lin. Ft.													
	4 Furnish 24" C.M.	Lin. Ft.													
	5 Furnish	Lin. Ft.													
	6 Furnish	Lin. Ft.													
	7 Furnish 12" C.M. Band	Each													
	8 Furnish 15" C.M. Band	Each													
	9														
	10														
P ₃ CULVERTS	1 Furnish 18" P ₃	Lin. Ft.													
	2 Furnish 24" P ₃	Lin. Ft.													
	3 Furnish 30" P ₃	Lin. Ft.													
	4 Furnish 36" P ₃	Lin. Ft.													
	5														
	6														
GUARD RAIL	1 Guard Rail - Cable	Lin. Ft.													
	2 Guard Rail Anchors	Each													
	3 Dummy Posts	Each													
	4														
SIDEWALKS AND CURBING	1 Concrete Curb - Straight	Lin. Ft.													
	2 Concrete Curb - Radius	Lin. Ft.													
	3 Remove Old Curb	Lin. Ft.													
	4 Remove Old Curb and Gutter	Lin. Ft.													
	5 Remove Old Sidewalk	Sq. Ft.													
	6 Replace Old Sidewalk	Sq. Ft.													
	7 Construct New Sidewalk	Sq. Ft.													
	8 Curb Inlet	Each													
	9 Catch Basin Complete	Each													
	10														
	11														
	12														
SEWER	1 12" Vitrified Sewer Pipe	Lin. Ft.													
	2 15" Vitrified Sewer Pipe	Lin. Ft.													
	3 18" Vitrified Sewer Pipe	Lin. Ft.													
	4 20" Vitrified Sewer Pipe	Lin. Ft.													
	5 24" Vitrified Sewer Pipe	Lin. Ft.													
	6 Manhole Complete	Each													
	7 Catch Basin Complete	Each													
	8														
	9														
	10														
PAVEMENT	1 Pavement - 1 Course Conc.	Sq. Yds.													
	2 Pavement - Asphaltic Conc.	Sq. Yds.													
	3 Integral Curb 8"	Lin. Ft.													
	4 Integral Curb 12"	Lin. Ft.													
	5 Surface Drain	Each													
	6 Surface Drain Basin	Each													
	7 Shoulders - Earth	Lin. Ft.													
	8														
STRUCTURES	1 Concrete	Cu. Yds.													
	2 Reinforcing Steel	Lbs.													
	3 Excavation	Cu. Yds.													
	4 Piling	Lin. Ft.													
	5														
	6														
	7														
	8														
	9														
	10														

DETAILS



OFFICE OF
 RAMSEY COUNTY SURVEYOR
 EMIL H. SCHULZ
 GRADING PLAN FOR
GRAMSIE ROAD
 FROM VICTORIA ST. TO RICE ST.
 JAN. 1937

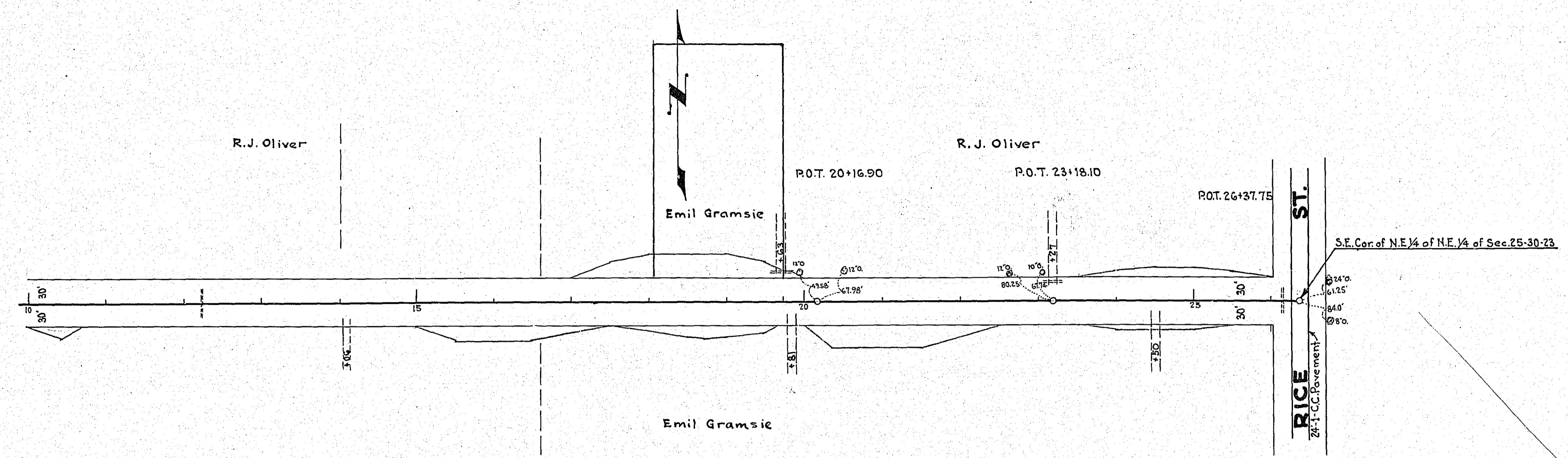
12x25
Imp. 24"x36" PL
12x25
Imp. 24"x36" Conc. P.
Remove & Repl.
Ext. 24"x4" Conc. P. Rt.
24"x4" Lt.

19x63 Lt.
Imp. 15"x20" CM

23x77 Lt.
Imp. 15"x20" CM

26x116 Lt.
Imp. 15"x20" PL

PLAN SURVEYED BY DATE
 FLOTTED BY
 NOTE BOOK NO. CHECKED BY
 NO. AT. BY WAY CHECKED



PROFILE SURVEYED BY DATE
 FLOTTED BY
 NOTE BOOK NO. CHECKED BY
 NO. STRUCTURE NOTE: H.C. 100'

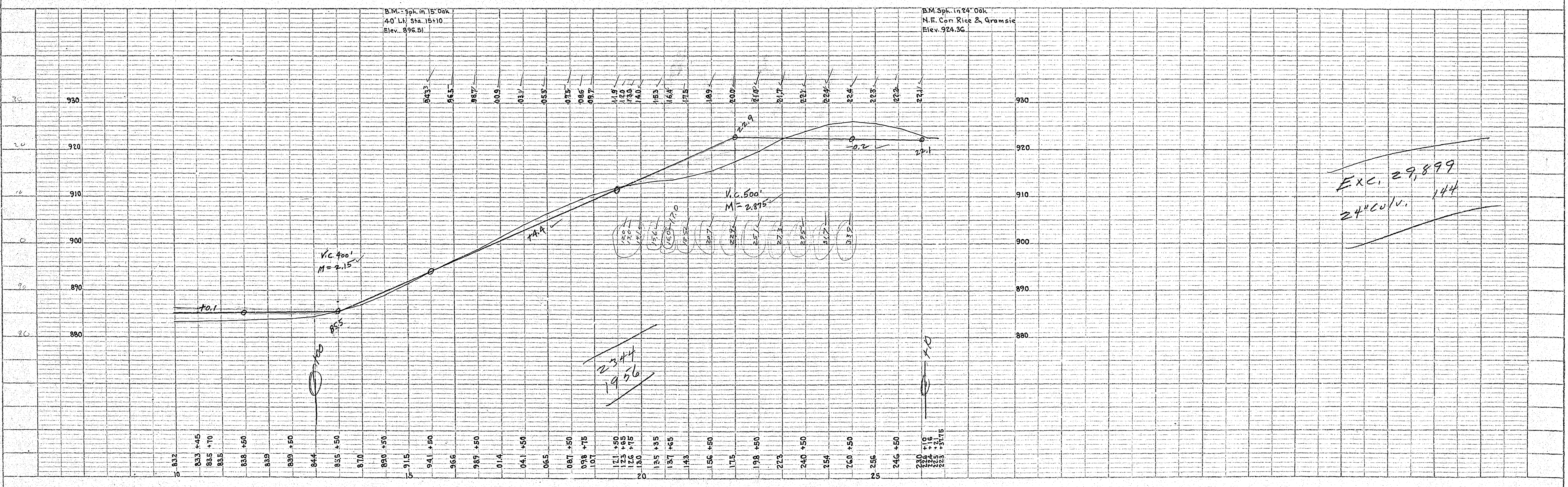
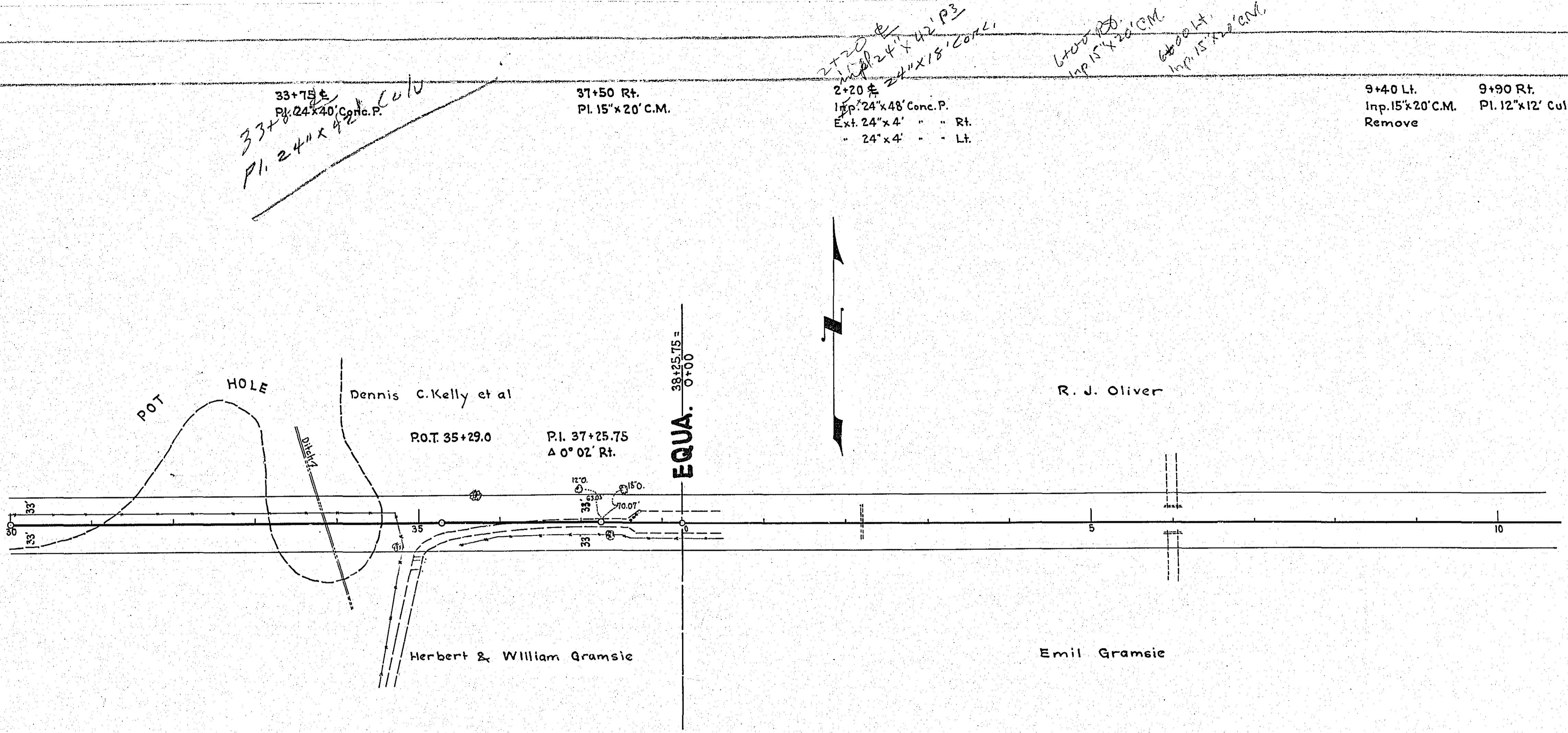


PLATE 1-PLAN-PROFILE O. R. & B. H. STANDARD
 KELFED & GOSSET CO., NEW YORK

X

PLAN	DATE
DESIGNED	BY
PLOTTED	
NOTE BOOK ALIGNMENT CHECKED	
RT. OF WAY CHECKED	
NO.	



PROFILE	DATE
SURVEYED	BY
NOTE BOOK GRAMSIC CHECKED	
STRUCTURE NOTING CHAS.	
NO.	

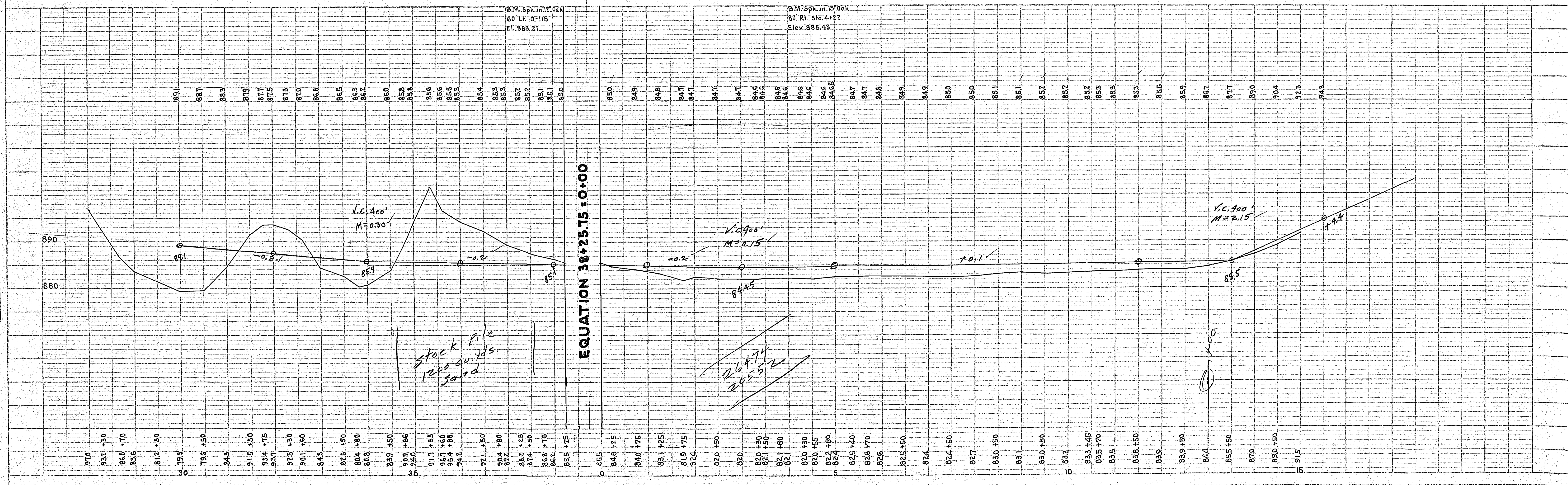


PLATE 1 - PLAN-PROFILE - D. P. D. & S. STANDARD
 REUFEL & ZIGLER CO., NEW YORK.

