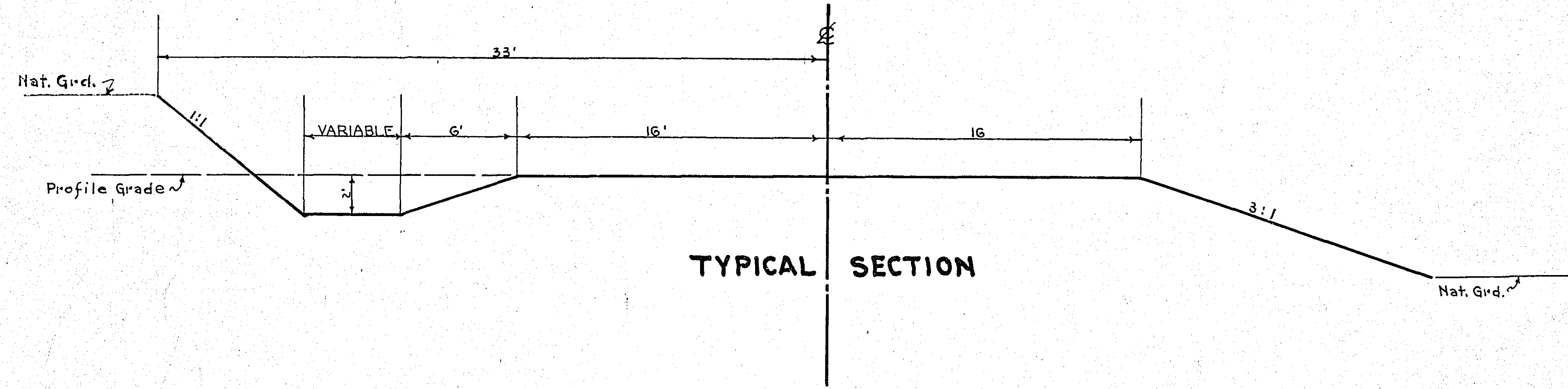


STATEMENT OF ESTIMATED QUANTITIES

CLASS	ITEM	UNIT	MILE From To	MILE From To	MILE From To	MILE From To	MILE From To	MILE From To	MILE From To	MILE From To	MILE From To	MILE From To	MILE From To	TOTAL ESTIMATED QUANTITIES	
GRADING	1	Clearing	Trees												
	2	Grubbing	Trees												
	3	Clearing	Acres												
	4	Grubbing	Acres												
	5	Excavation	Earth	Cu. Yds.											
	6	Excavation	Loose Rock	Cu. Yds.											
	7	Excavation	Solid Rock	Cu. Yds.											
	8	Excavation	Overhaul	Cu. Yds.											
	9	Excavation	Special	Cu. Yds.											
	10	Excavation	Hand Ditch	Cu. Yds.											
	11	Install	12" C.M.	Lin. Ft.											
	12	Install	15" C.M.	Lin. Ft.											
	13	Install	18" C.M.	Lin. Ft.											
	14	Install	24" C.M.	Lin. Ft.											
	15	Install		Lin. Ft.											
	16	Install		Lin. Ft.											
	17	Install	18" P3	Lin. Ft.											
	18	Install	24" P3	Lin. Ft.											
	19	Install	30" P3	Lin. Ft.											
	20	Install	36" P3	Lin. Ft.											
	21	Install		Lin. Ft.											
	22	Install		Lin. Ft.											
	23	Remove Old Culvert		Lin. Ft.											
	24	Replace Old Culvert		Lin. Ft.											
	25	Finishing and Seeding	100 Sq.Yds.												
	26	Rubble Gutter	Cu. Yds.												
	27	Headwall	Concrete	Cu. Yds.											
	28	Headwall	Steel	Lbs.											
	29														
	30														
	31														
	32														
C.M. CULVERTS	1	Furnish 12" C.M.	Lin. Ft.												
	2	Furnish 15" C.M.	Lin. Ft.												
	3	Furnish 18" C.M.	Lin. Ft.												
	4	Furnish 24" C.M.	Lin. Ft.												
	5	Furnish	Lin. Ft.												
	6	Furnish	Lin. Ft.												
	7	Furnish 12" C.M. Bond	Each												
	8	Furnish 15" C.M. Bond	Each												
	9														
	10														
P3 CULVERTS	1	Furnish 18" P3	Lin. Ft.												
	2	Furnish 24" P3	Lin. Ft.												
	3	Furnish 30" P3	Lin. Ft.												
	4	Furnish 36" P3	Lin. Ft.												
	5														
	6														
GUARD RAIL	1	Guard Rail - Cable	Lin. Ft.												
	2	Guard Rail Anchors	Each												
	3	Dummy Posts	Each												
	4														
SIDEWALKS AND CURBING	1	Concrete Curb - Straight	Lin. Ft.												
	2	Concrete Curb - Radius	Lin. Ft.												
	3	Remove Old Curb	Lin. Ft.												
	4	Remove Old Curb and Gutter	Lin. Ft.												
	5	Remove Old Sidewalk	Sq. Ft.												
	6	Replace Old Sidewalk	Sq. Ft.												
	7	Construct New Sidewalk	Sq. Ft.												
	8	Curb Inlet	Each												
	9	Catch Basin Complete	Each												
	10														
	11														
	12														
SEWER	1	12" Vitrified Sewer Pipe	Lin. Ft.												
	2	15" Vitrified Sewer Pipe	Lin. Ft.												
	3	18" Vitrified Sewer Pipe	Lin. Ft.												
	4	20" Vitrified Sewer Pipe	Lin. Ft.												
	5	24" Vitrified Sewer Pipe	Lin. Ft.												
	6	Manhole Complete	Each												
	7	Catch Basin Complete	Each												
8															
9															
10															
PAVEMENT	1	Pavement - 1 Course Conc.	Sq. Yds.												
	2	Pavement - Asphaltic Conc.	Sq. Yds.												
	3	Integral Curb - 8"	Lin. Ft.												
	4	Integral Curb - 12"	Lin. Ft.												
	5	Surface Drain	Each												
	6	Surface Drain Basin	Each												
	7	Shoulders - Earth	Lin. Ft.												
	8														
STRUCTURES	1	Concrete	Cu. Yds.												
	2	Reinforcing Steel	Lbs.												
	3	Excavation	Cu. Yds.												
	4	Piling	Lin. Ft.												
	5														
	6														
	7														
	8														
	9														
	10														

DETAILS

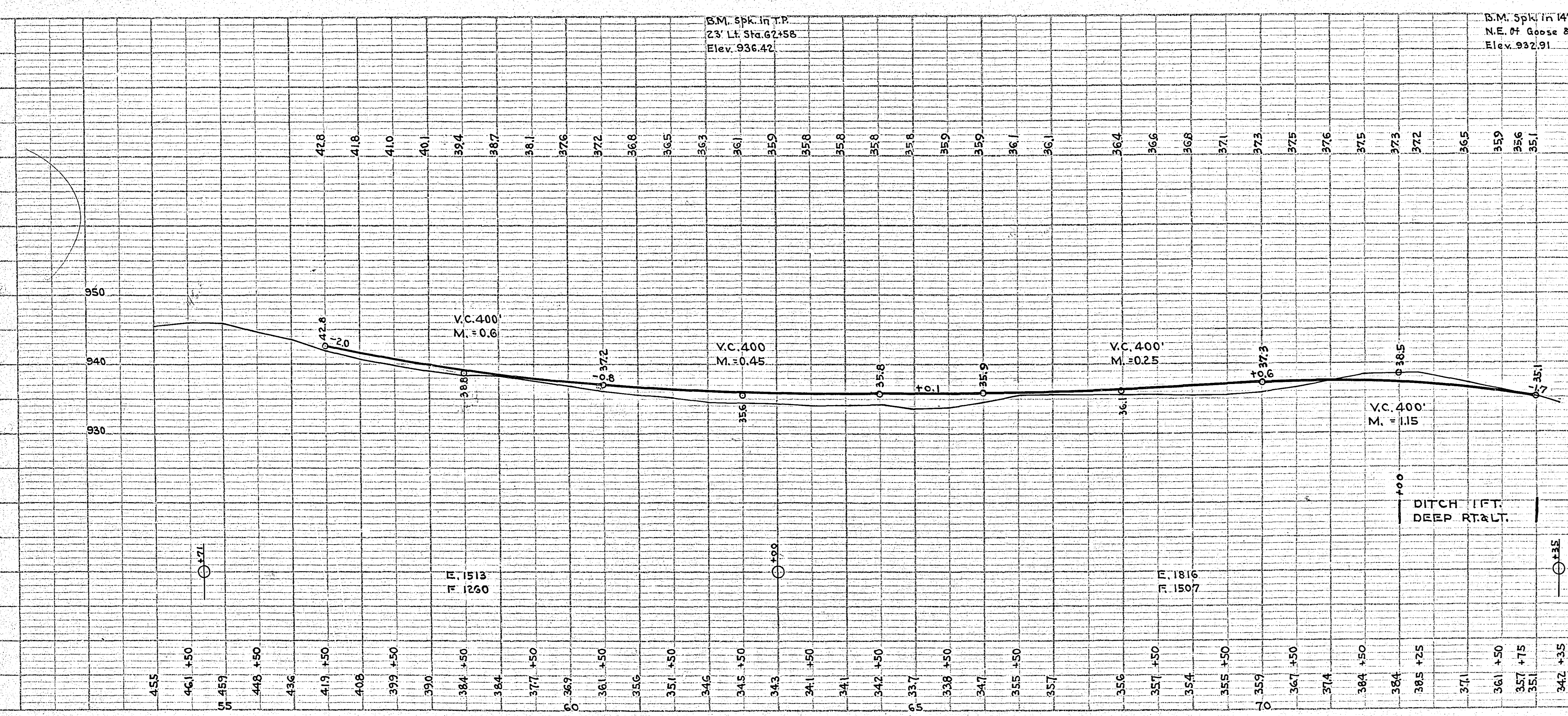
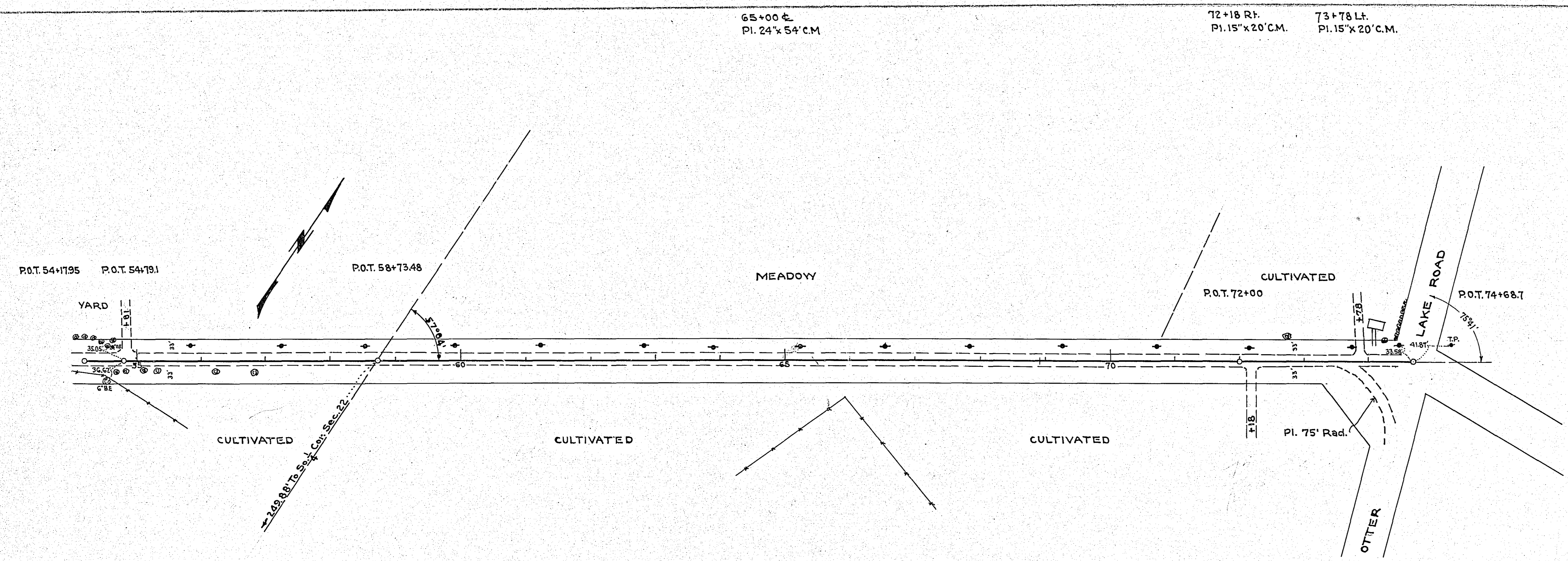


TYPICAL SECTION

OFFICE OF  
 RAMSEY COUNTY SURVEYOR  
 EMIL H. SCHULZ  
 GRADING PLAN  
**GOOSE LAKE ROAD**  
 FROM THE W. LINE SEC. 27-30-22 TO OTTER L. RD.  
 SEPT. 1936

PLAN	SURVEYED	BY	DATE
	PLOTTED		
	NOTED		
	NO.		

PROFILE	SURVEYED	BY	DATE
	PLOTTED		
	NOTED		
	NO.		

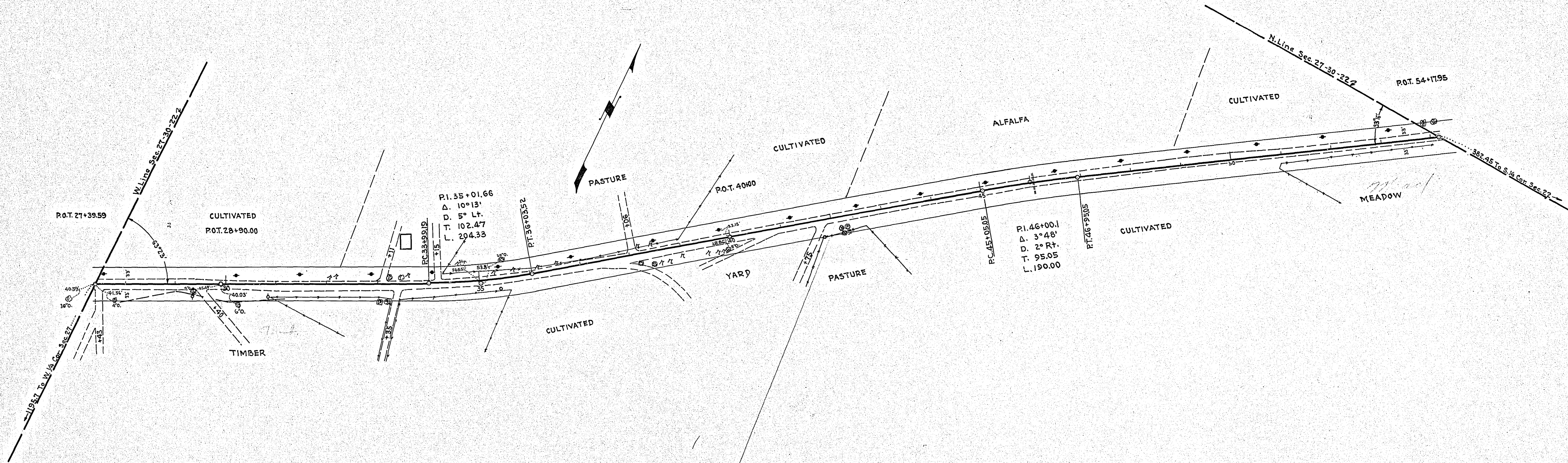


**GOOSE LAKE ROAD**  
ESTIMATED QUANTITIES

Exc.	Co-Yds	9678
15' C.M.	Lin. Ft.	180
24' C.M.	" "	165

27+43 R.I. PI. 15'x20' C.M.    29+40 R.I. PI. 15'x20' C.M.    33+11 L.I. PI. 15'x20' C.M.    33+35 R.I. PI. 15'x20' C.M.    34+15 L.I. PI. 15'x20' C.M.    37+00 C. PI. 24'x52' C.M.    37+90 R.I. PI. 15'x20' C.M.    40+75 R.I. PI. 15'x20' C.M.    45+50 C. PI. 24'x62' C.M.    46+04 C. Imp. 12'x C.M. Remove

PLAN	DESIGNED	DATE
	PLOTTED	
	NOTE BOOK	
	ALIGNMENT CHECKED	
	RT. OF WAY CHECKED	
	NO.	



PROFILE	DESIGNED	DATE
	PLOTTED	
	NOTE BOOK	
	GRADES CHECKED	
	P. M. NOTED	
	STRUCTURE NOTATIONS CHNG.	
	NO.	

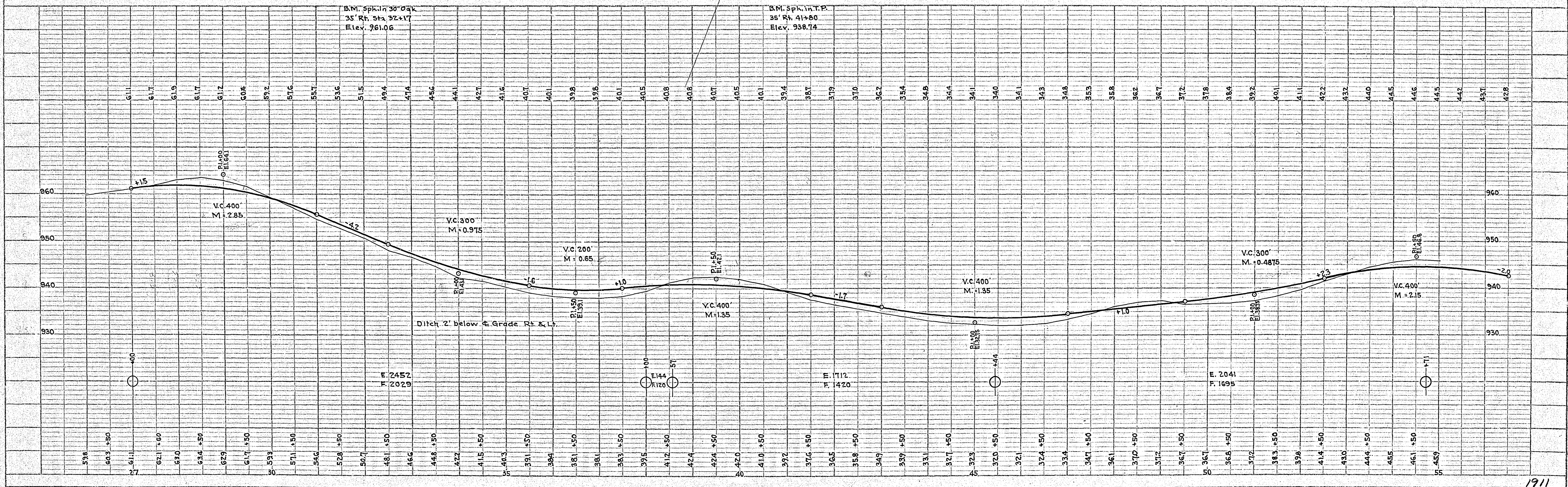


PLATE 1 - PLAN-PROFILE - P. R. & C. STANDARD  
KEUFFEL & ESSER CO., NEW YORK