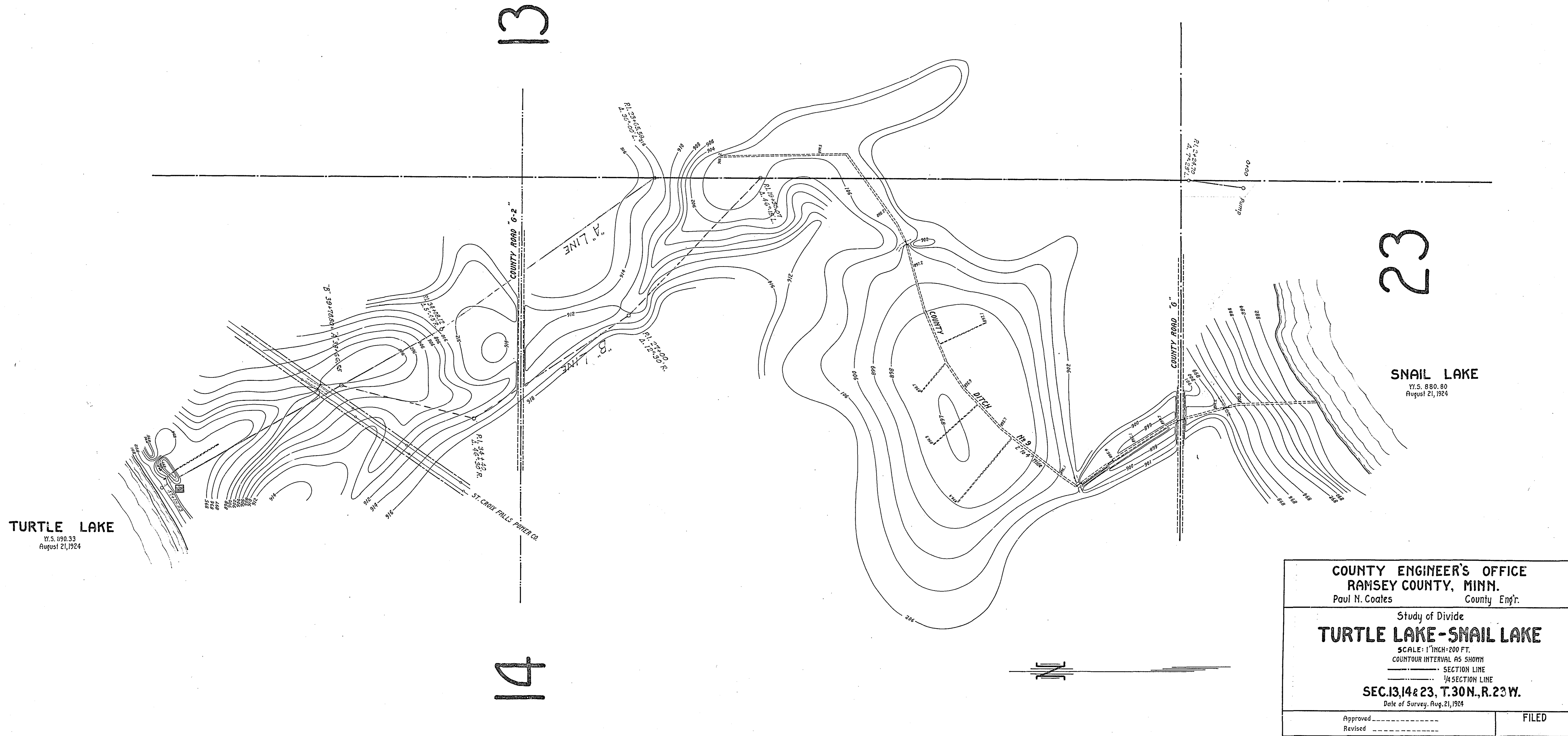


PROFILE OF LOWEST ELEVATIONS OF SNAIL L.-TURTLE L. CONNECTION.



COUNTY ENGINEER'S OFFICE
 RAMSEY COUNTY, MINN.
 Paul N. Coates County Engr.

Study of Divide
TURTLE LAKE-SNAIL LAKE
 SCALE: 1"=200 FT.
 CONTOUR INTERVAL AS SHOWN
 — SECTION LINE
 - - - - - 1/4 SECTION LINE
SEC. 13, 14 & 23, T. 30 N., R. 23 W.
 Date of Survey, Aug. 21, 1924

Approved _____	FILED
Revised _____	