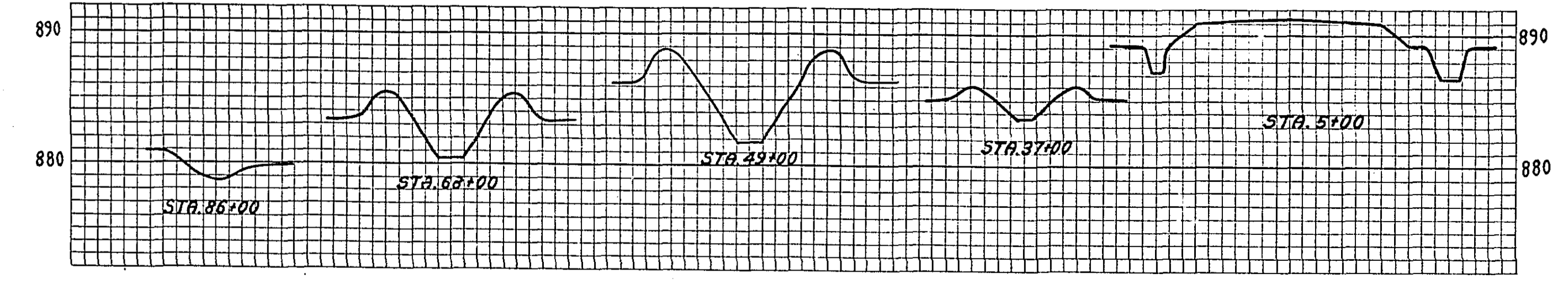


TYPICAL CROSS-SECTIONS



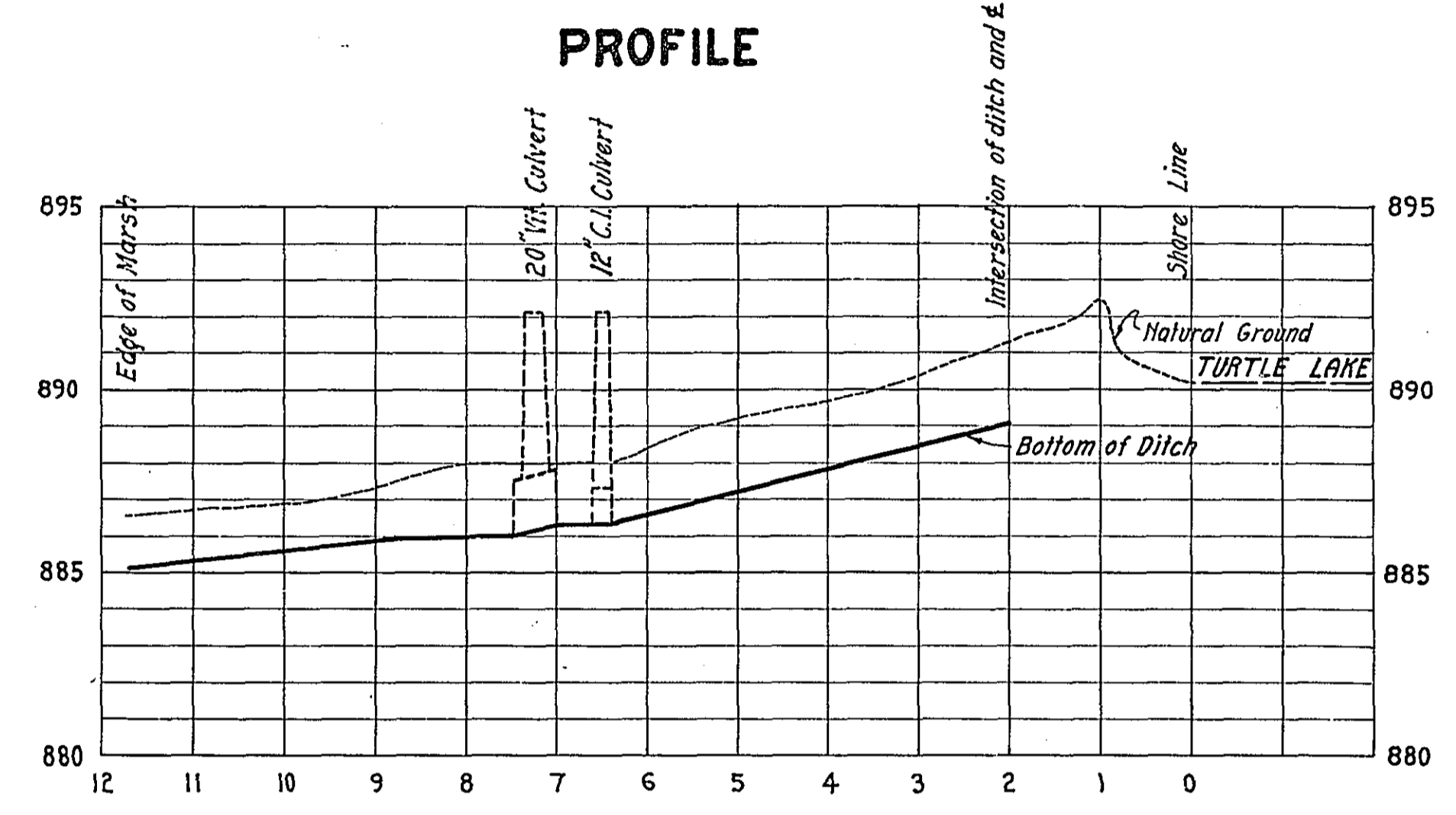
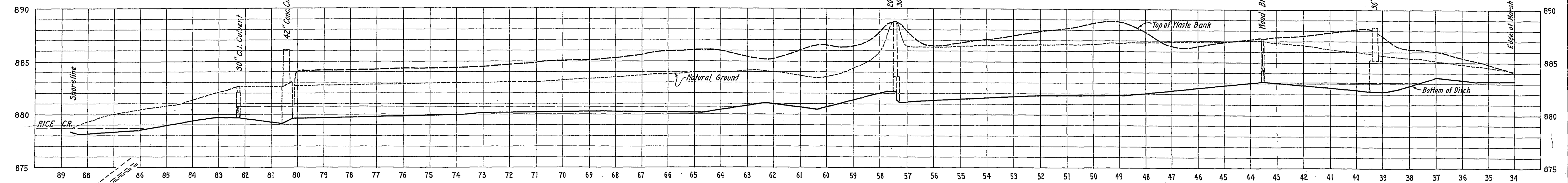
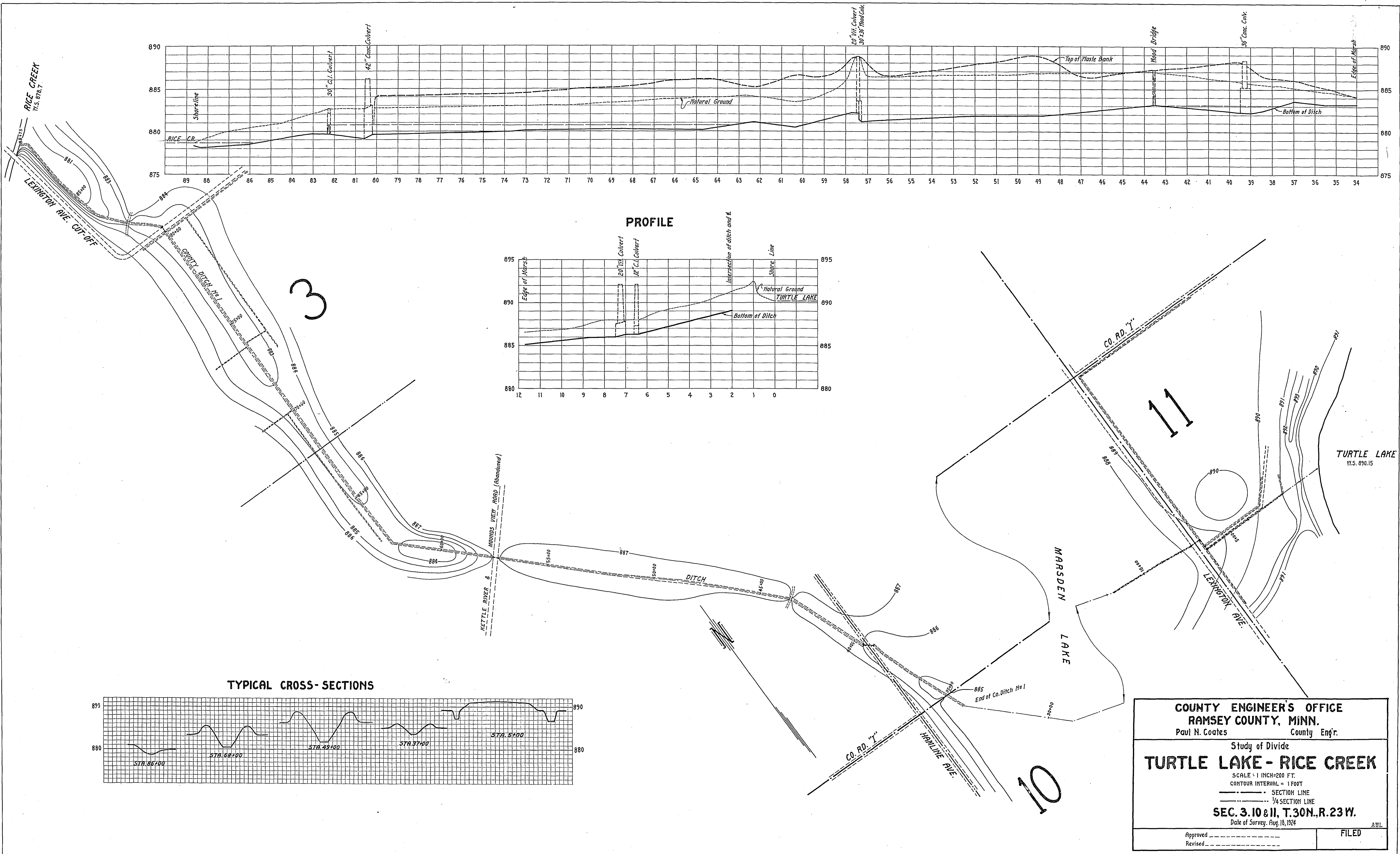
COUNTY ENGINEER'S OFFICE
 RAMSEY COUNTY, MINN.
 Paul N. Coates County Engr.

Study of Divide
TURTLE LAKE - RICE CREEK
 SCALE: 1 INCH=200 FT.
 CONTOUR INTERVAL = 1 FOOT

— SECTION LINE
 - - - SECTION LINE
 . . . SECTION LINE

SEC. 3.10 & 11, T.30N., R.23W.
 Date of Survey, Aug. 10, 1924

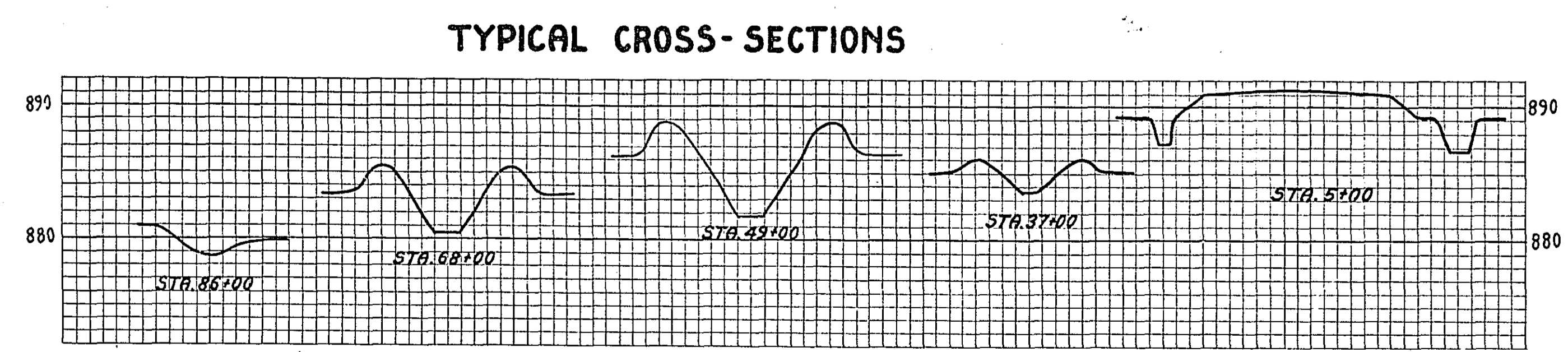
Approved _____	FILED _____
Revised _____	



3

11

10



COUNTY ENGINEER'S OFFICE
RAMSEY COUNTY, MINN.
 Paul N. Coates County Eng'r.

Study of Divide
TURTLE LAKE - RICE CREEK

SCALE - 1 INCH = 200 FT.
 CONTOUR INTERVAL = 1 FOOT

--- SECTION LINE
 - - - - - 1/4 SECTION LINE

SEC. 3.10 & 11, T. 30N., R. 23W.
 Date of Survey, Aug. 18, 1924

Approved _____ FILED
 Revised _____