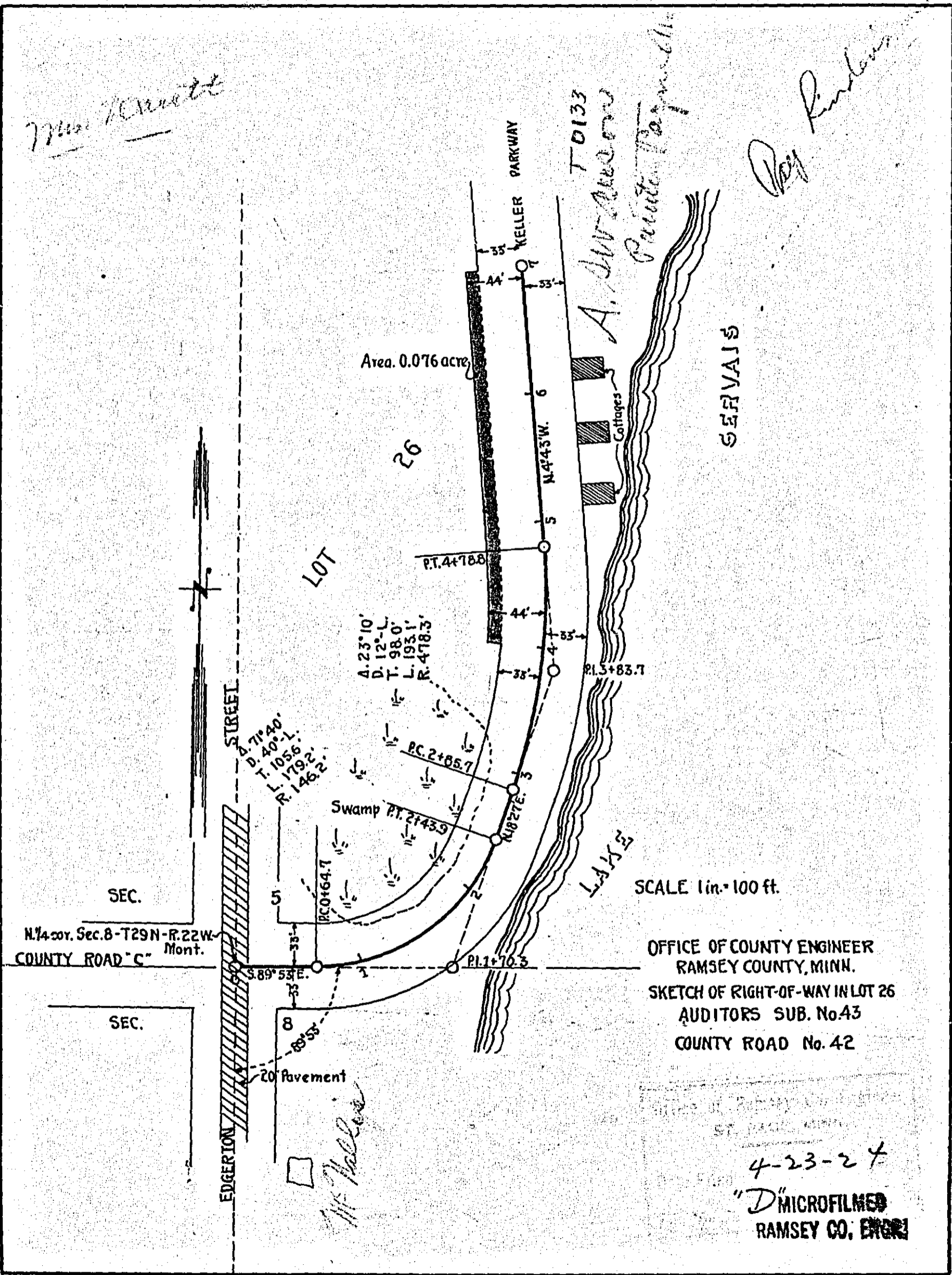


*Wm. K. Smith*

*Ray*

T 0133

*A. W. Anderson*  
*Private Property*



Area. 0.076 acres

26

LOT

STREET

KELLER PARKWAY

A. W. Anderson

Private Property

Cottages

SERVAIS

LAKE

SEC.

N. 1/4 cor. Sec. 8-T29N-R. 22W. Mont.  
COUNTY ROAD "C"

SEC.

EDGERION

20' Pavement

*W. K. Smith*

SCALE 1 in. = 100 ft.

OFFICE OF COUNTY ENGINEER  
RAMSEY COUNTY, MINN.  
SKETCH OF RIGHT-OF-WAY IN LOT 26  
AUDITORS SUB. No. 43  
COUNTY ROAD No. 42

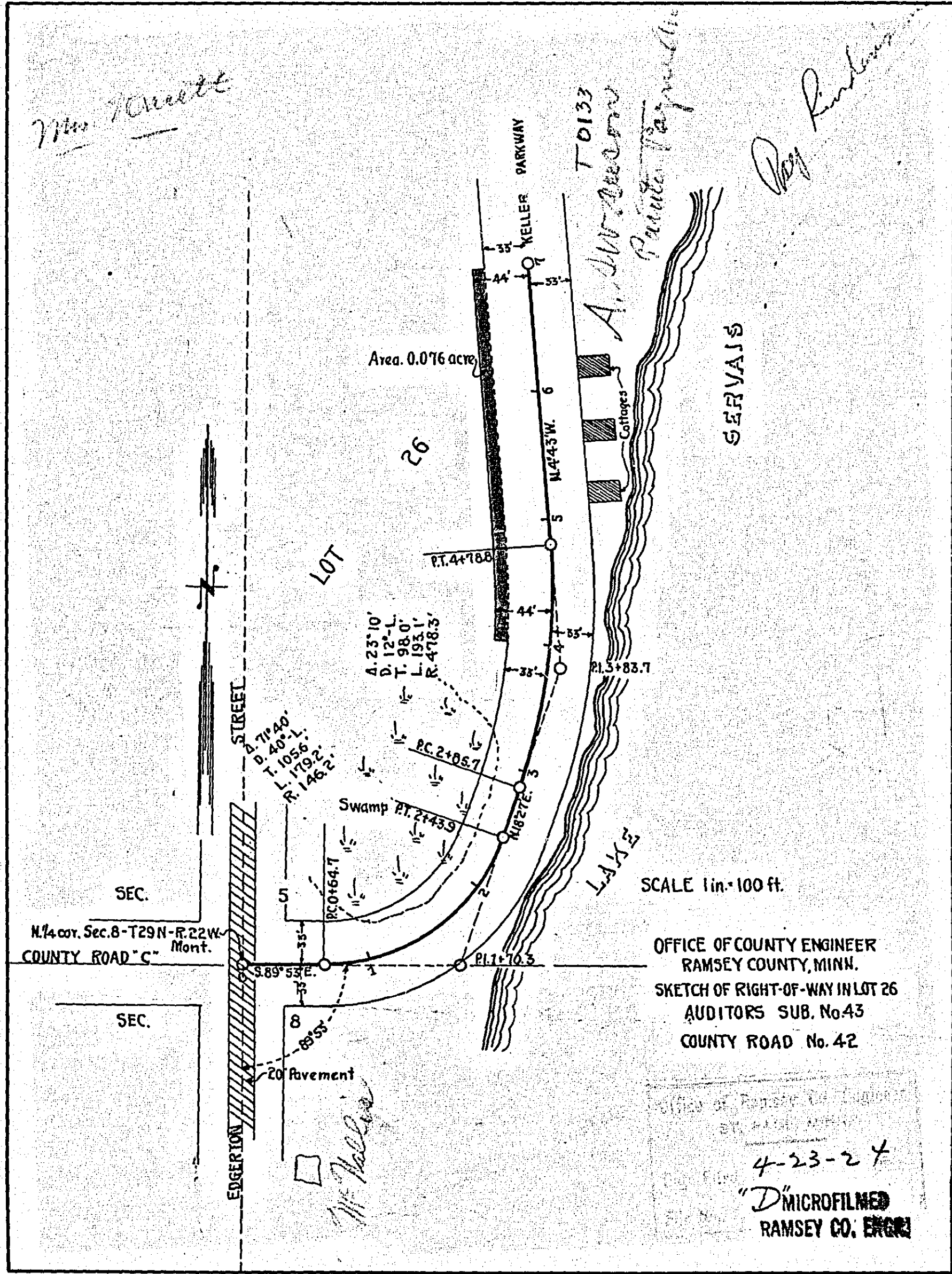
4-23-27

"D" MICROFILMED  
RAMSEY CO. ENGINEER

*Mr. Merrill*

*Ray Rindland*

*T0133  
A. W. Anderson  
Private Property*



SEC.  
N. 1/4 cor. Sec. 8-T29N-R. 22W. Mont.  
COUNTY ROAD "C"

SCALE 1 in. = 100 ft.

OFFICE OF COUNTY ENGINEER  
RAMSEY COUNTY, MINN.  
SKETCH OF RIGHT-OF-WAY IN LOT 26  
AUDITORS SUB. No. 43  
COUNTY ROAD No. 42

4-23-24  
"D" MICROFILMED  
RAMSEY CO. ENGINEER