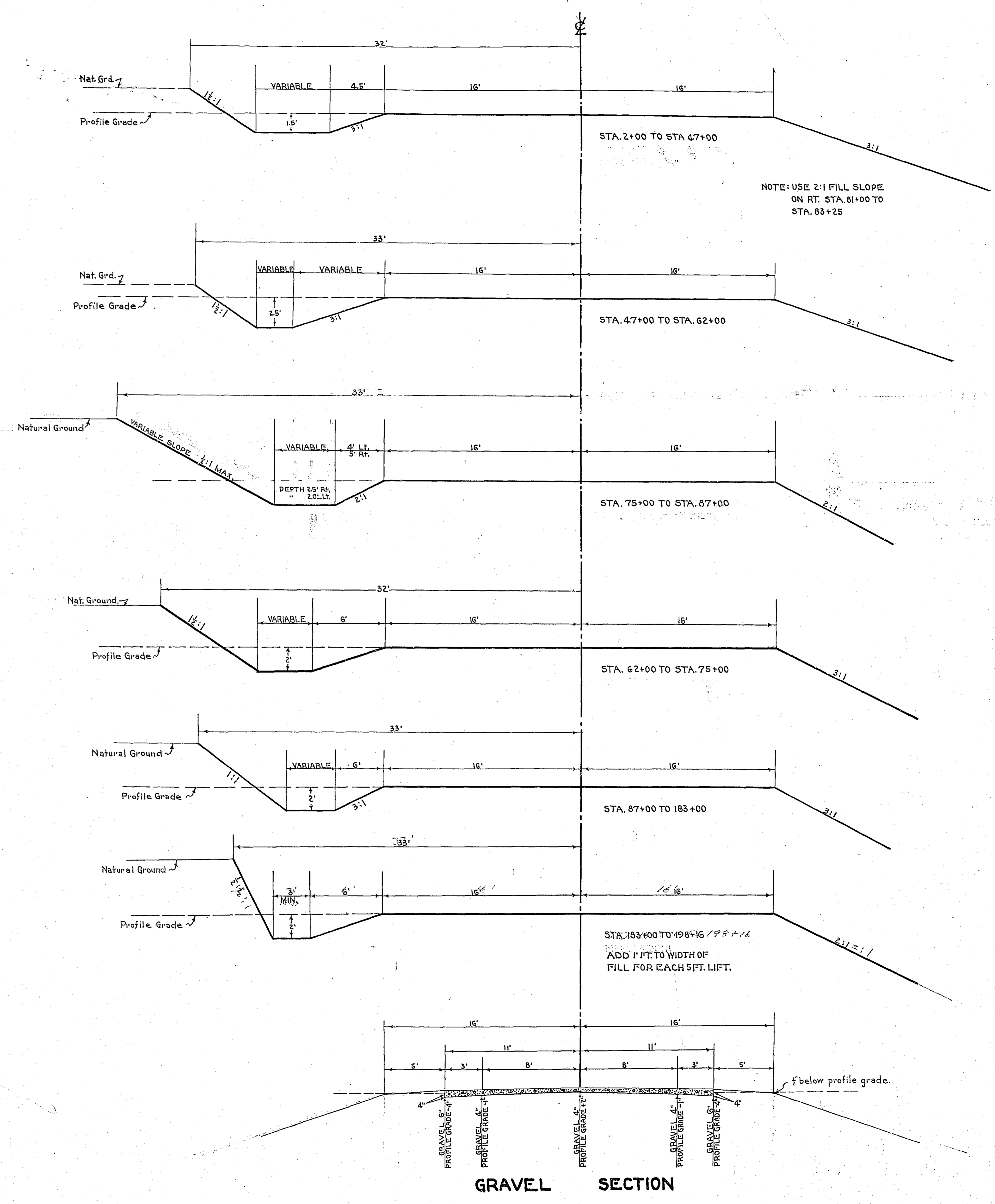


STATEMENT OF ESTIMATED QUANTITIES

CLASS	ITEM	UNIT	MILE ONE	MILE TWO	MILE	MILE	MILE	MILE	MILE	MILE	MILE	TOTAL ESTIMATED QUANTITIES
			From 2+00 To 57+89	From 57+89 To	From To	From To	From To	From To	From To	From To	From To	
GRADING	1	Clearing	Trees									
	2	Grubbing	Trees									
	3	Clearing	Acres									
	4	Grubbing	Acres									
	5	Excavation Earth	Cu. Yds.									
	6	Excavation Loose Rock	Cu. Yds.									
	7	Excavation Solid Rock	Cu. Yds.									
	8	Excavation Overhaul	Cu. Yds.									
	9	Excavation Special	Cu. Yds.									
	10	Excavation Hand Ditch	Cu. Yds.									
	11	Install 12" C.M.	Lin. Ft.									
	12	Install 15" C.M.	Lin. Ft.									
	13	Install 18" C.M.	Lin. Ft.									
	14	Install 24" C.M.	Lin. Ft.									
	15	Install	Lin. Ft.									
	16	Install	Lin. Ft.									
	17	Install 18" Ps	Lin. Ft.									
	18	Install 24" Ps	Lin. Ft.									
	19	Install 30" Ps	Lin. Ft.									
	20	Install 36" Ps	Lin. Ft.									
	21	Install	Lin. Ft.									
	22	Install	Lin. Ft.									
	23	Remove Old Culvert	Lin. Ft.									
	24	Replace Old Culvert	Lin. Ft.									
	25	Finishing and Seeding	100 Sq.Yds.									
	26	Rubble Gutter	Cu. Yds.									
	27	Headwall Concrete	Cu. Yds.									
	28	Headwall Steel	Lbs.									
	29											
	30											
	31											
	32											
C.M. CULVERTS	1	Furnish 12" C.M.	Lin. Ft.									
	2	Furnish 15" C.M.	Lin. Ft.									
	3	Furnish 18" C.M.	Lin. Ft.									
	4	Furnish 24" C.M.	Lin. Ft.									
	5	Furnish	Lin. Ft.									
	6	Furnish	Lin. Ft.									
	7	Furnish 12" C.M. Band	Each									
	8	Furnish 15" C.M. Band	Each									
	9											
	10											
P ₃ CULVERTS	1	Furnish 18" P ₃	Lin. Ft.									
	2	Furnish 24" P ₃	Lin. Ft.									
	3	Furnish 30" P ₃	Lin. Ft.									
	4	Furnish 36" P ₃	Lin. Ft.									
	5											
	6											
GUARD RAIL	1	Guard Rail - Cable	Lin. Ft.									
	2	Guard Rail Anchors	Each									
	3	Dummy Posts	Each									
	4											
SIDEWALKS AND CURBING	1	Concrete Curb - Straight	Lin. Ft.									
	2	Concrete Curb - Radius	Lin. Ft.									
	3	Remove Old Curb	Lin. Ft.									
	4	Remove Old Curb and Gutter	Lin. Ft.									
	5	Remove Old Sidewalk	Sq. Ft.									
	6	Replace Old Sidewalk	Sq. Ft.									
	7	Construct New Sidewalk	Sq. Ft.									
	8	Curb Inlet	Each									
	9	Catch Basin Complete	Each									
	10											
	11											
	12											
SEWER	1	12" Vitrified Sewer Pipe	Lin. Ft.									
	2	15" Vitrified Sewer Pipe	Lin. Ft.									
	3	18" Vitrified Sewer Pipe	Lin. Ft.									
	4	20" Vitrified Sewer Pipe	Lin. Ft.									
	5	24" Vitrified Sewer Pipe	Lin. Ft.									
	6	Manhole Complete	Each									
	7	Catch Basin Complete	Each									
	8											
	9											
	10											
PAVEMENT	1	Pavement - 1 Course Conc.	Sq. Yds.									
	2	Pavement - Asphaltic Conc.	Sq. Yds.									
	3	Integral Curb 8"	Lin. Ft.									
	4	Integral Curb 12"	Lin. Ft.									
	5	Surface Drain	Each									
	6	Surface Drain Basin	Each									
	7	Shoulders - Earth	Lin. Ft.									
	8											
STRUCTURES	1	Concrete	Cu. Yds.									
	2	Reinforcing Steel	Lbs.									
	3	Excavation	Cu. Yds.									
	4	Piling	Lin. Ft.									
	5											
	6											
	7											
	8											
	9											
	10											

DETAILS



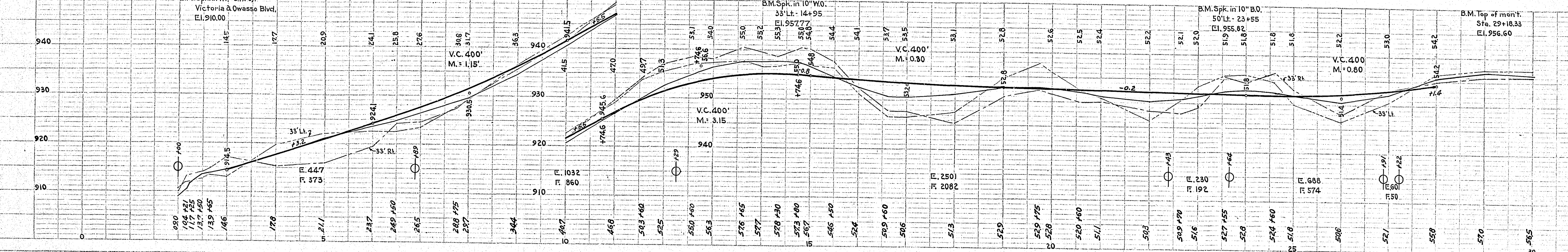
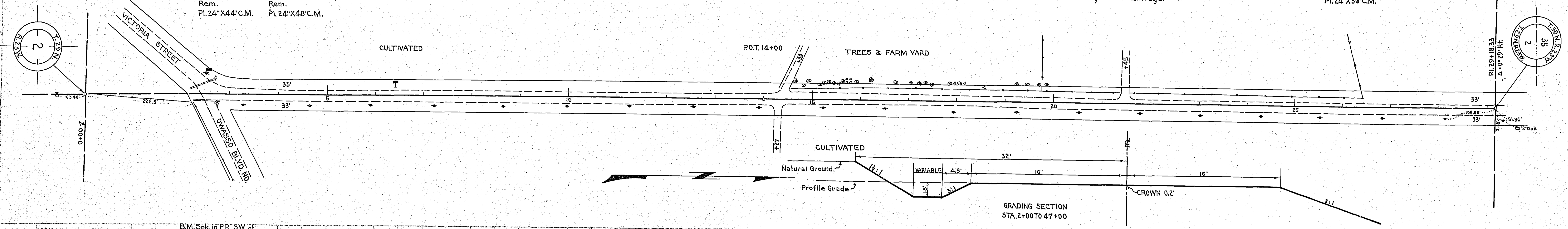
VICTORIA ST.

2+50 Rt. Inp. 12" X 44' C.M. Rem. Pl. 24" X 44' C.M.
 2+50 Lt. Inp. 16" X 48' C.M. Rem. Pl. 24" X 48' C.M.

14+27 Rt. No culv. req'd.
 14+39 Lt. No culv. req'd.
 16+50 ± Pl. 24" X 66' C.M.

21+45 Lt. No culv. req'd.
 22+00 ± No culv. req'd.

26+00 ± Pl. 24" X 56' C.M.



30+54 Lt. No culv. req'd.
 31+10 Lt. No culv. req'd.
 32+99 ± Inp. 16" X 40' C.M. Rem. Pl. 24" X 56' C.M.

3603.4
 2918.33
 885.07

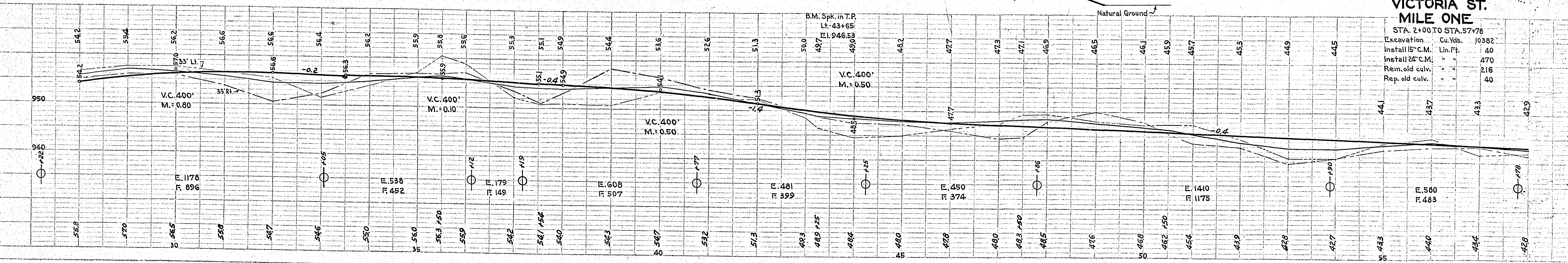
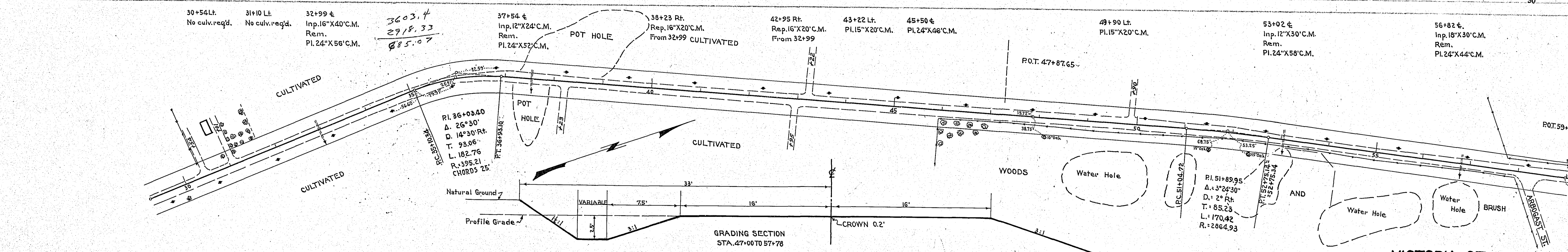
37+54 ± Inp. 12" X 24' C.M. Rem. Pl. 24" X 52' C.M.
 38+23 Rt. Rep. 16" X 20' C.M. From 32+99 CULTIVATED

42+95 Rt. Rep. 16" X 20' C.M. From 32+99
 43+22 Lt. Pl. 15" X 20' C.M.
 45+50 ± Pl. 24" X 46' C.M.

49+90 Lt. Pl. 15" X 20' C.M.

53+02 ± Inp. 12" X 30' C.M. Rem. Pl. 24" X 58' C.M.

56+82 ± Inp. 18" X 30' C.M. Rem. Pl. 24" X 44' C.M.

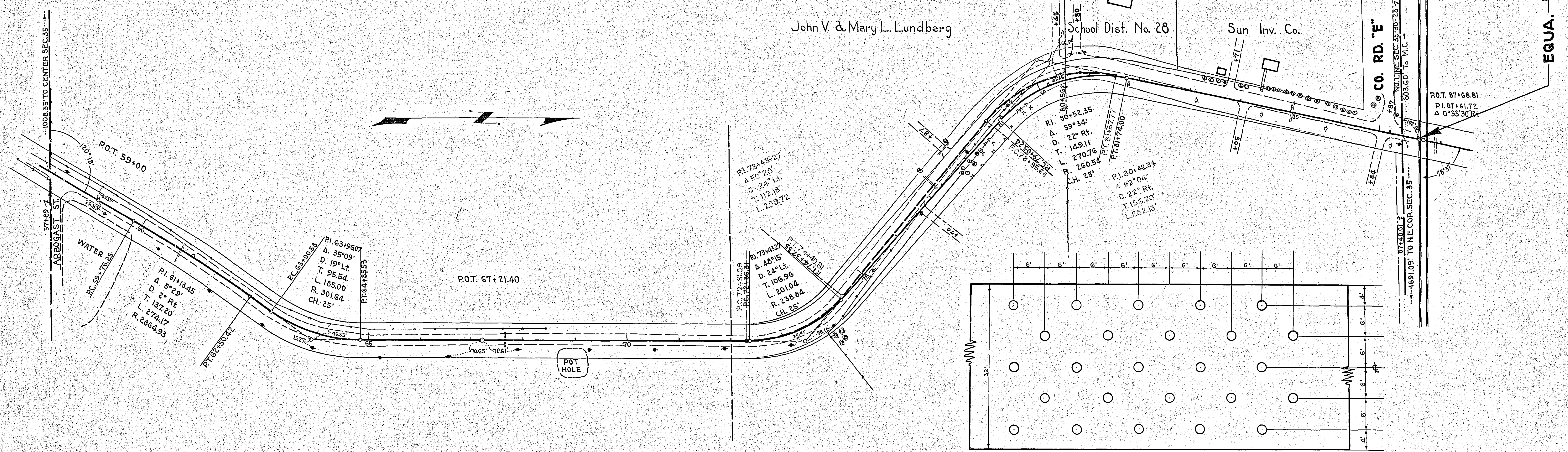


VICTORIA ST. MILE ONE

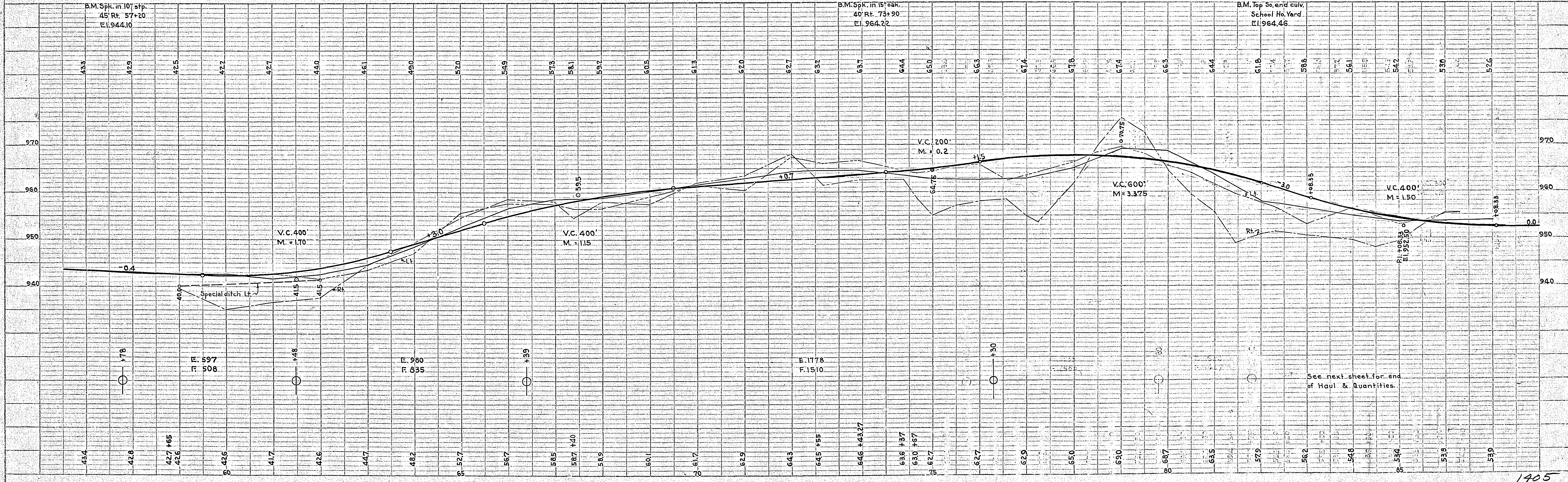
STA. 2+00 TO STA. 57+78

Excavation	Cu. Yds.	10382
Install 15" C.M.	Lin. Ft.	40
Install 24" C.M.	"	470
Rem. old culv.	"	216
Rep. old culv.	"	40

59+00 ± Pl. 24' x 54' C.M. 60+90 ± Inp. 12' x 27' C.M. Rem. Pl. 24' x 58' C.M. 62+30 Rf. & Lt. Pl. 2-15' x 20 C.M.s. 67+65 ± Inp. 12' x 30' C.M. Rem. Pl. 24' x 48' C.M. 67+50 Rf. & Lt. Pl. 2-15' x 20' C.M.s. 76+70 Rf. Pl. 15' x 20' C.M. 77+23 ± Inp. 12' x 36' C.M. Rem. Pl. 24' x 60' C.M. 77+87 Lt. Inp. 12' x 24' C.M. Rem. Pl. 15' x 20' C.M. 80+45 Lt. Pl. 15' x 20' C.M. 80+80 Lt. Inp. 12' x 26' C.M. Rem. Pl. 15' x 20' C.M. 81+50 ± Pl. 24' x 56' C.M. 83+71 Lt. Pl. 15' x 20' C.M. 84+05 Rf. Pl. 15' x 20' C.M. 85+04 ± Inp. 12' x 30' C.M. Rem. Pl. 24' x 50' C.M. 86+84 Rf. Pl. 15' x 20' C.M. 87+92 ± Inp. 18' x 34' C.M. Rem. Pl. 24' x 54' C.M.

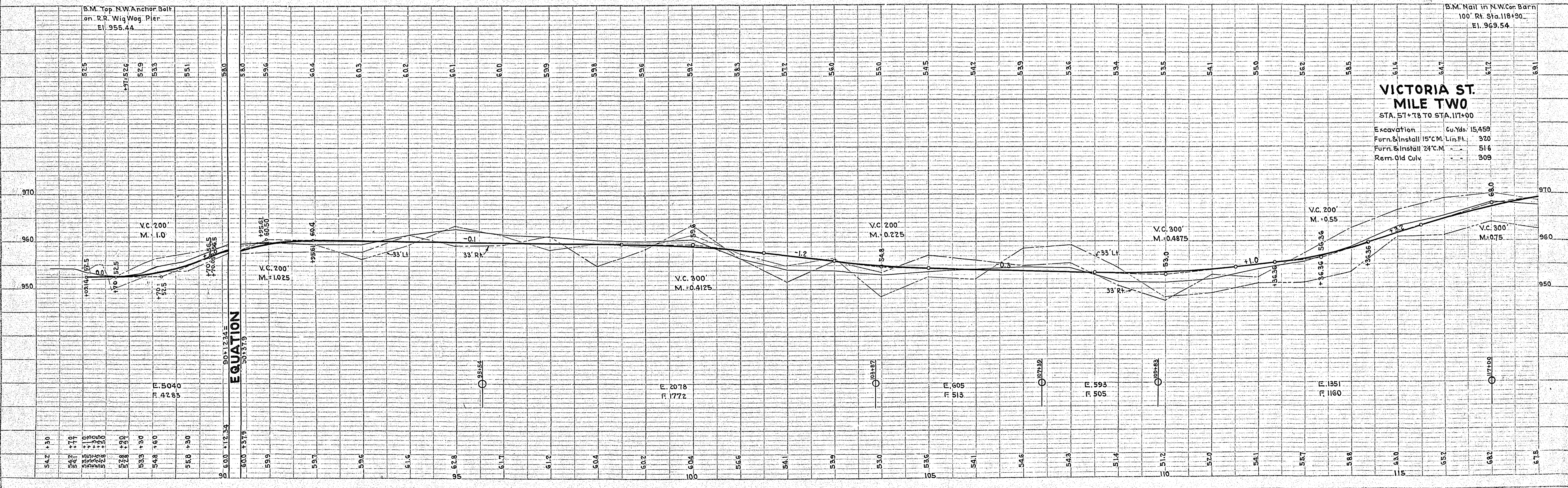
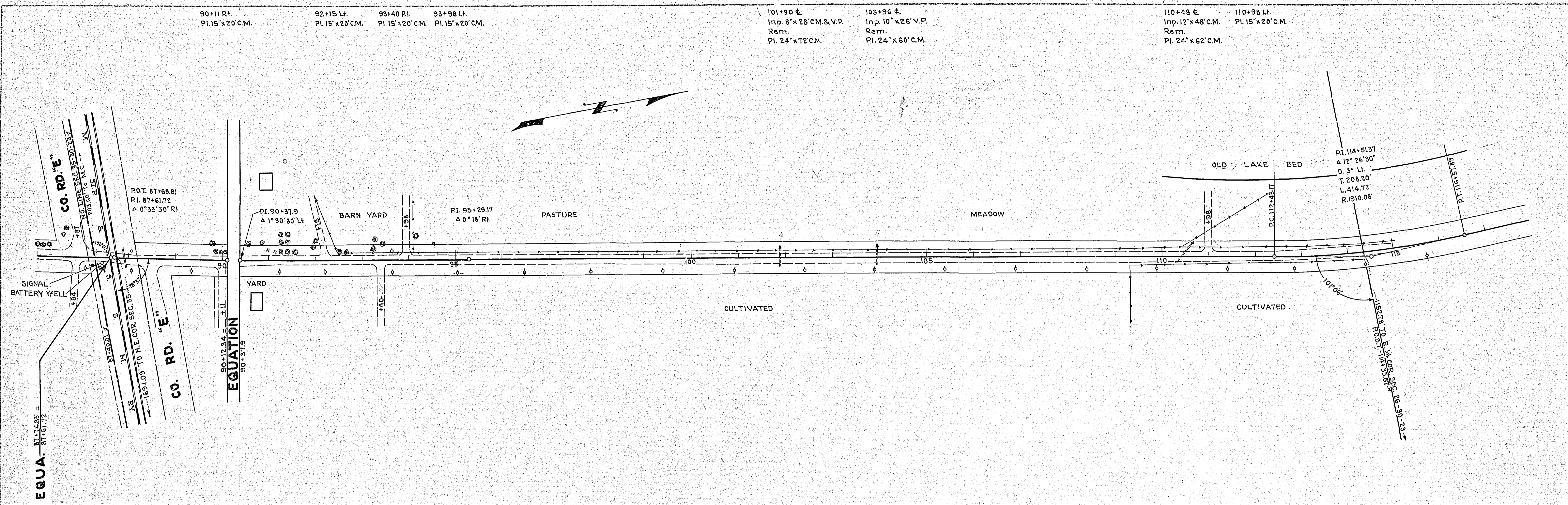


SUBGRADE TREATMENT FOR FROST BOILS.
Holes 8" diameter, 7" deep. Backfill with Gravel. Locations as shown



PLAN
CHECKED BY: [Signature]
DATE: [Date]
NOTE: BOOK ALIGNMENT CHECKED BY: [Signature]
NO. [Number] BY: [Signature]

PROFILE
CHECKED BY: [Signature]
DATE: [Date]
NOTE: BOOK GRADES CHECKED BY: [Signature]
NO. [Number] BY: [Signature]



SURVEYED BY: [Name] DATE: [Date]
 CHECKED BY: [Name] DATE: [Date]
 DRAWN BY: [Name] DATE: [Date]
 NO. [Number]

DATE	
BY	
REVISIONS	
NO.	
PLANNED	
DESIGNED	
DRAWN	
CHECKED	
IN CHARGE	
NO.	
NOTE BOOK	
ALICEMENT CHECKED	
BY	
DATE	
NO.	

DATE	
BY	
REVISIONS	
NO.	
PROFILE	
DESIGNED	
DRAWN	
CHECKED	
IN CHARGE	
NO.	
NOTE BOOK	
ALICEMENT CHECKED	
BY	
DATE	
NO.	

174+00 ±
Inp. 12" x 28' C.M.
Remove
Pl. 24" x 122' C.M.

178+20 Lt.
Inp. 12" x 20' C.M.
Remove
Pl. 15' x 20' C.M.

178+25 ±
Inp. 20" x 36' V.P.
Remove
Pl. 24' x 90' C.M.

179+40 Lt.
Inp. 12" x 20' C.M.
Remove
Pl. 15' x 20' C.M.

180+70 Lt.
Inp. 15' x 16' C.M.
Remove
Pl. 15' x 20' C.M.

182+65 ±
Inp. 12" x 28'
Remove
Pl. 24' x 56' C.M.

187+95 ±
Inp. 12" x 30' C.M.
Remove
Pl. 24' x 60' C.M.

194+70 Rt.
Pl. 15' x 20' C.M.

198+00 ±
Inp. 20" x 158' C.M.
Ext. 20" x 24' C.M.
1-Band

