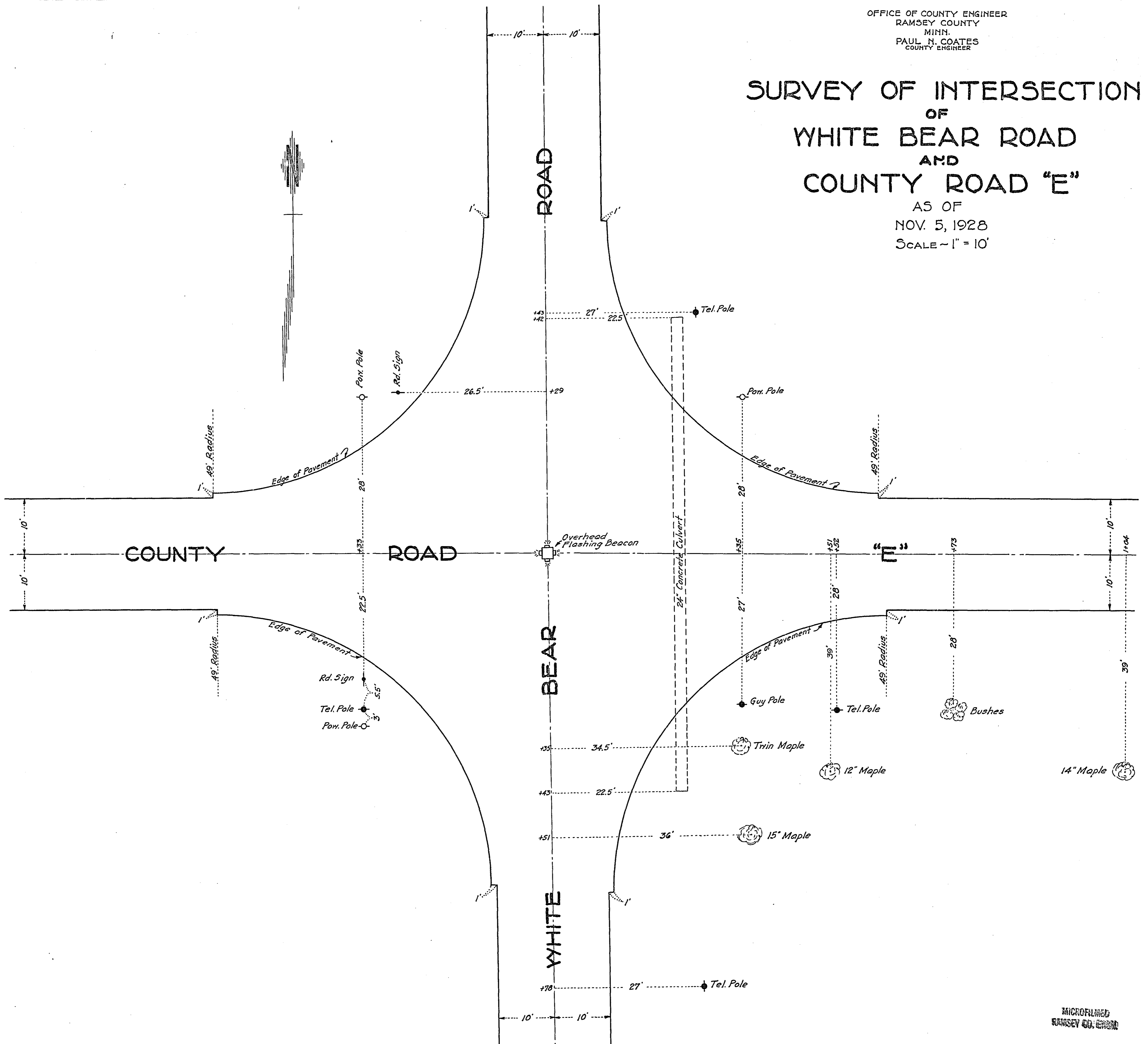


OFFICE OF COUNTY ENGINEER  
RAMSEY COUNTY  
MINN.  
PAUL N. COATES  
COUNTY ENGINEER

# SURVEY OF INTERSECTION OF WHITE BEAR ROAD AND COUNTY ROAD "E"

AS OF  
NOV. 5, 1928  
SCALE - 1" = 10'



MICROFILMED  
RAMSEY CO. ENGINEER

H.R. Petersen.