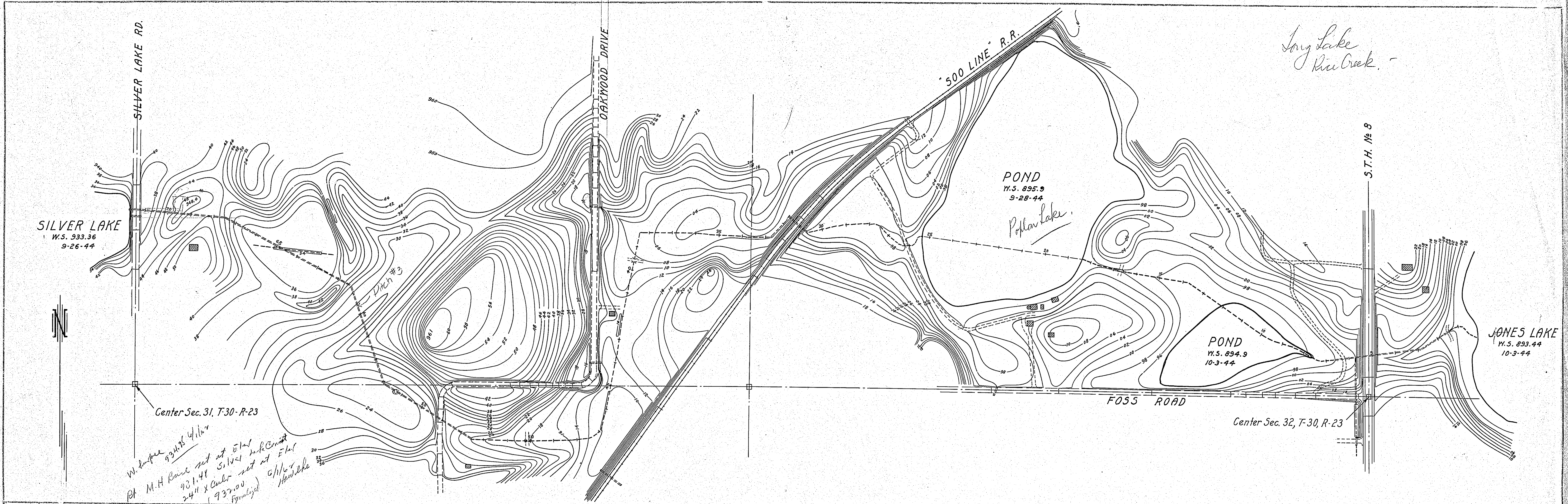
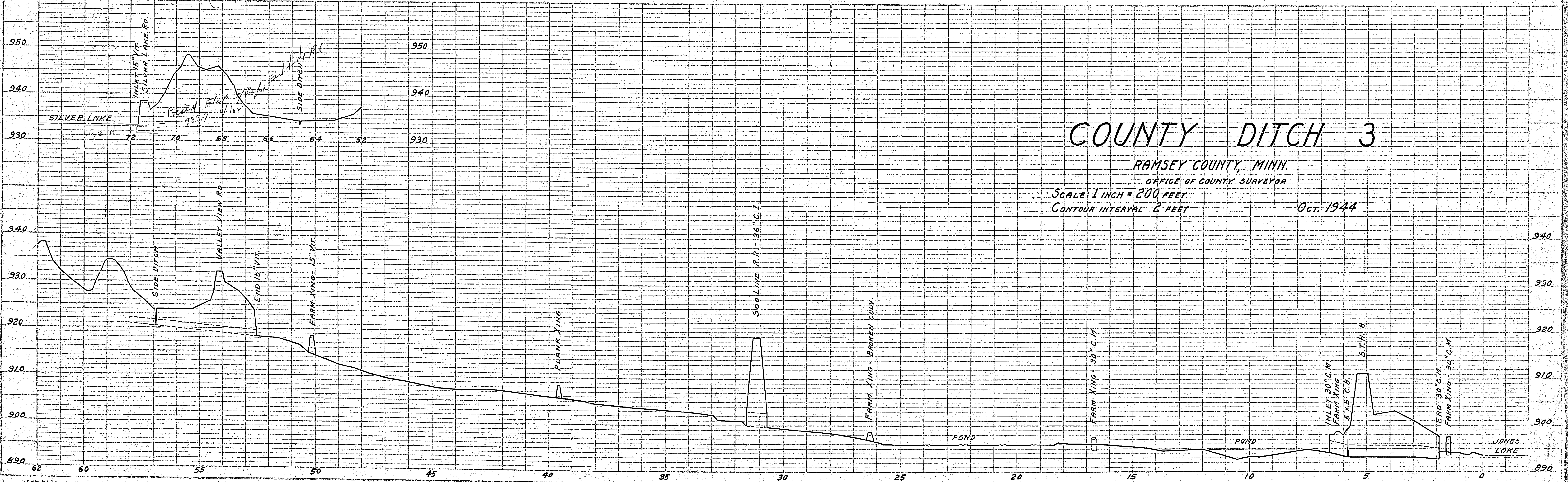


DATE	
BY	
APPROVED	
PLANNED	
FLIPPED	
NOTE BOOK	
NO.	

DATE	
BY	
APPROVED	
PLANNED	
FLIPPED	
NOTE BOOK	
NO.	



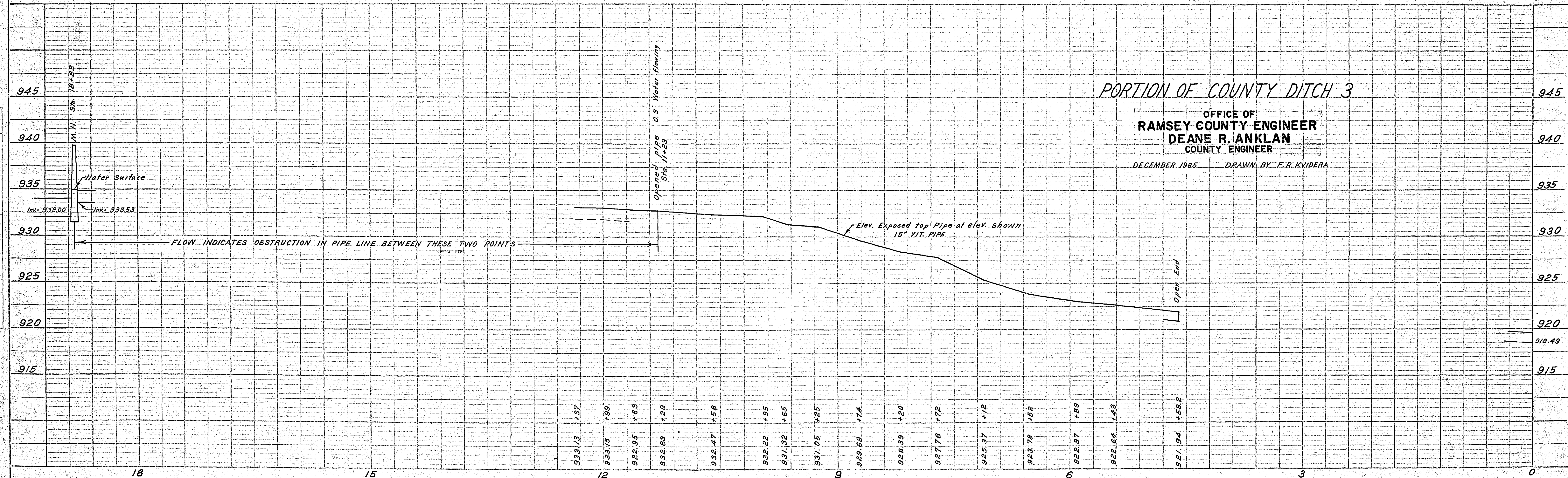
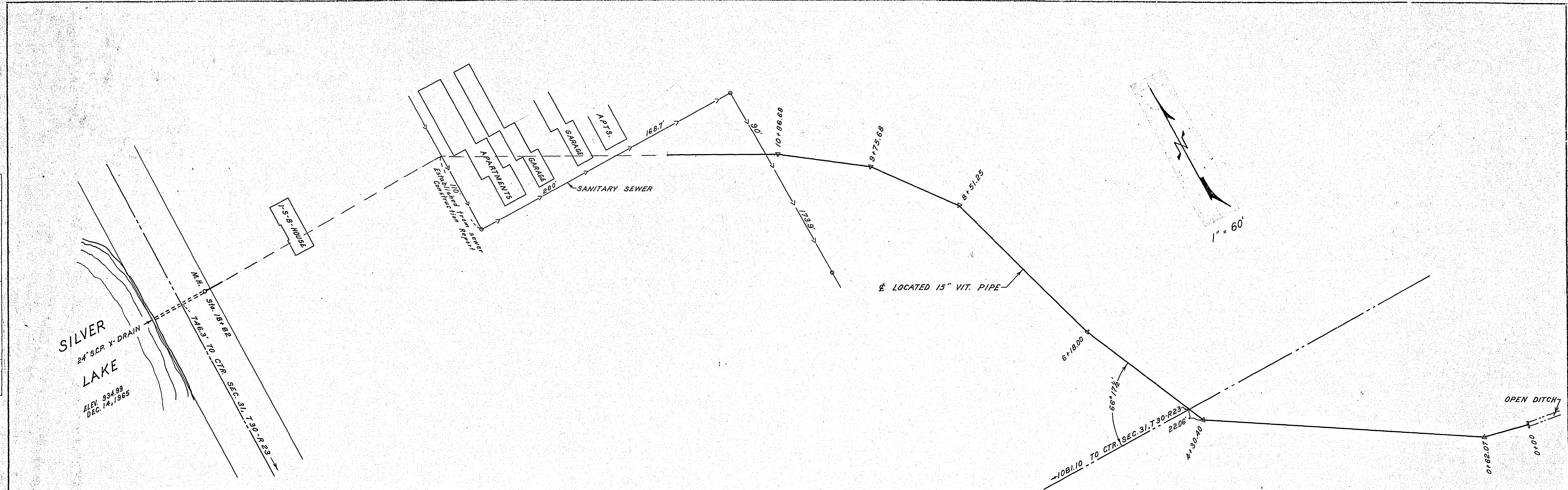
*W. H. H. 934.25 4/16/44  
 Pt. M. H. Base set at 51st  
 931.44 Silver set at 51st  
 2411 x Center set at 51st  
 (937.00) 6/16/44  
 (937.00) 6/16/44*



**COUNTY DITCH 3**  
 RAMSEY COUNTY, MINN.  
 OFFICE OF COUNTY SURVEYOR  
 SCALE: 1 INCH = 200 FEET.  
 CONTOUR INTERVAL 2 FEET  
 Oct. 1944

DATE	
BY	
CHECKED	
PLANNED	
NOTE BOOK NO.	
ALIGNMENT CHECKED	
REC. OF WAY CHECKED	

DATE	
BY	
CHECKED	
PLANNED	
NOTE BOOK NO.	
ALIGNMENT CHECKED	
REC. OF WAY CHECKED	



PORTION OF COUNTY DITCH 3  
 OFFICE OF  
**RAMSEY COUNTY ENGINEER**  
**DEANE R. ANKLAN**  
 COUNTY ENGINEER  
 DECEMBER 1965 DRAWN BY F.R. KVIDERA