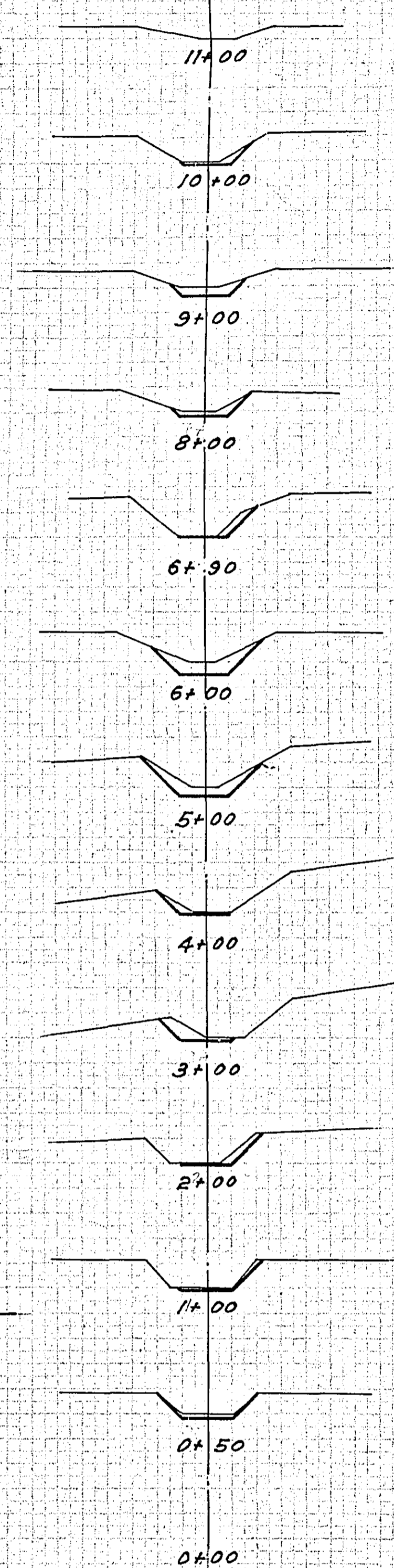


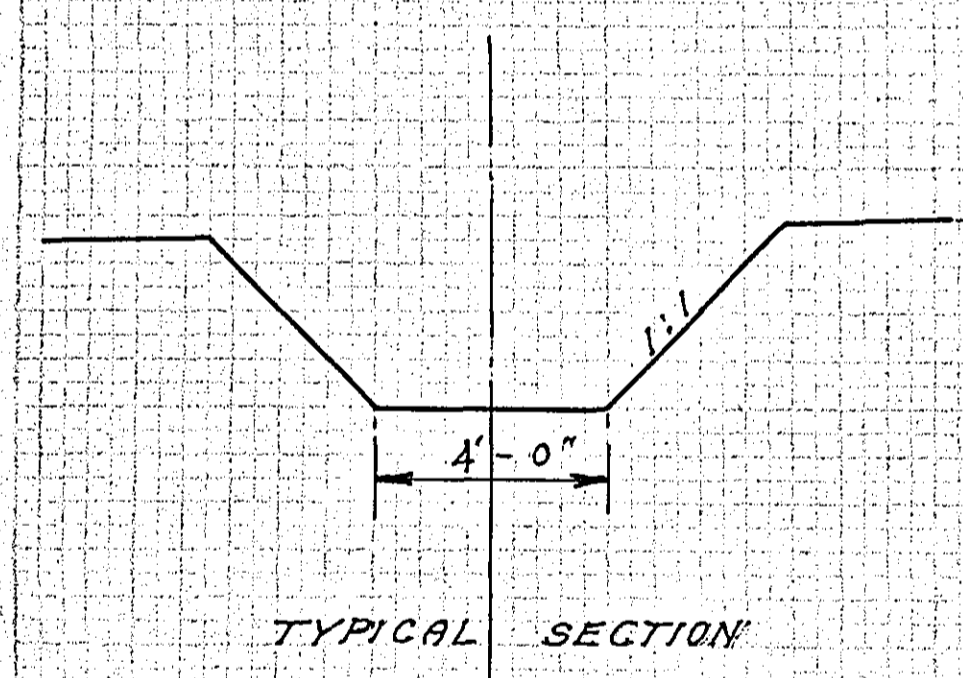
C.Y.



4
13
13
8
19
28
17
9
9
6
4
2

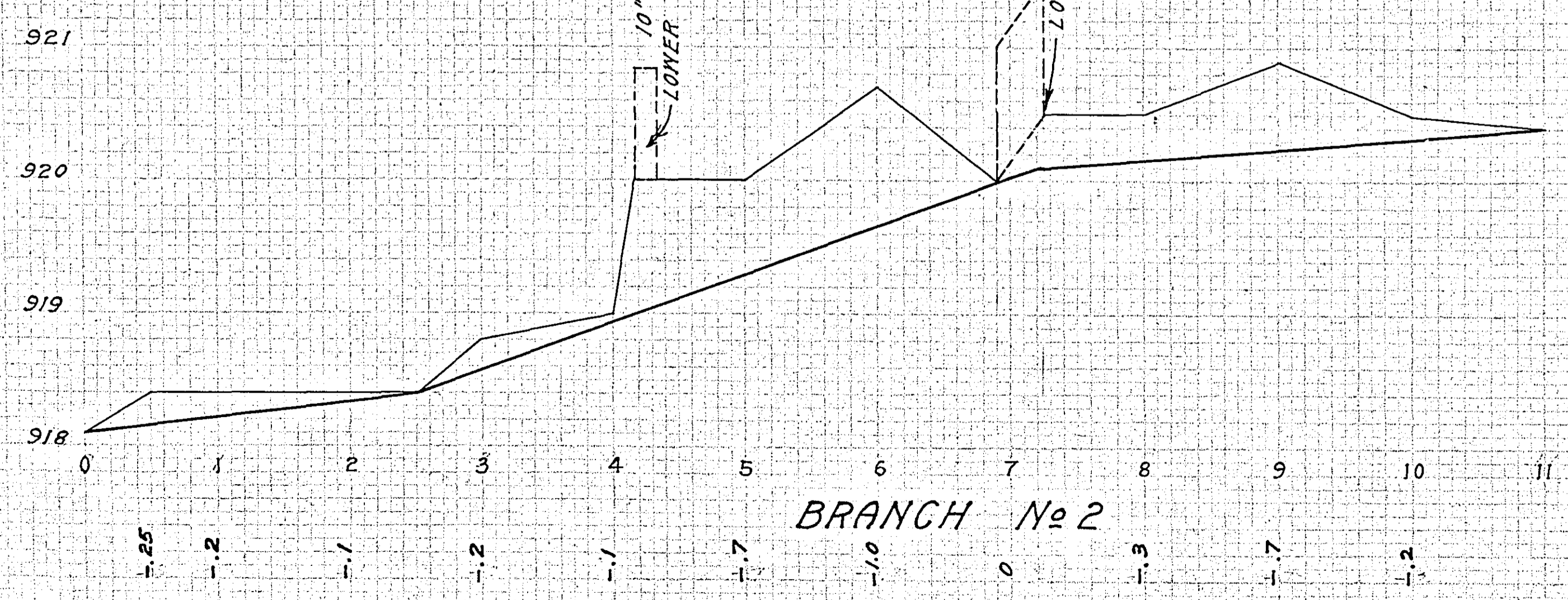
TOTAL 132 C.Y.

QUANTITIES
 1/2" EXCAVATION = 132 C.Y.
 1/2" BRUSHING = 25 ACRES
 LOWER 10" CULVERTS
 " " " " " "

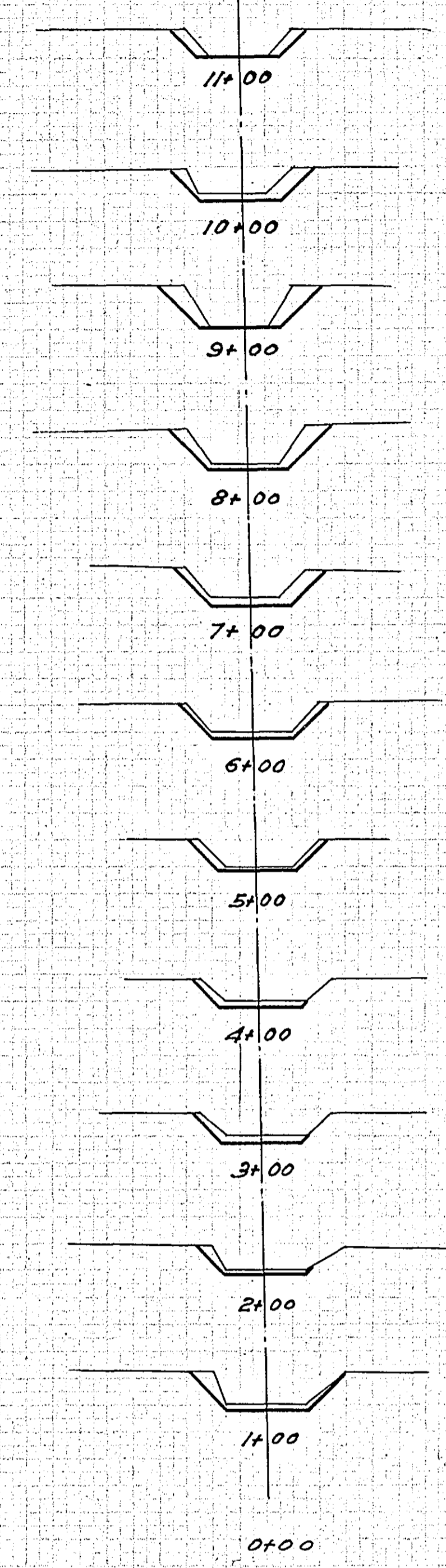


10" C.M. LOWER CULVERT

12" C.M. LOWER CULVERT



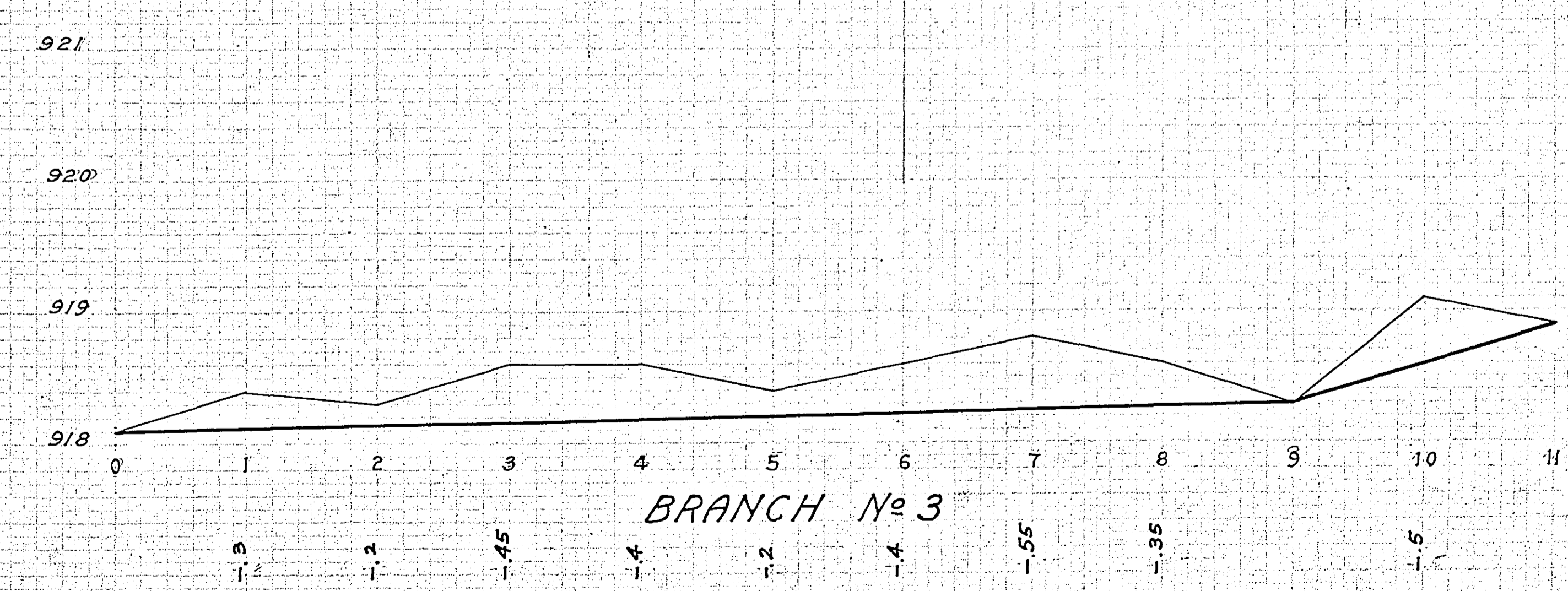
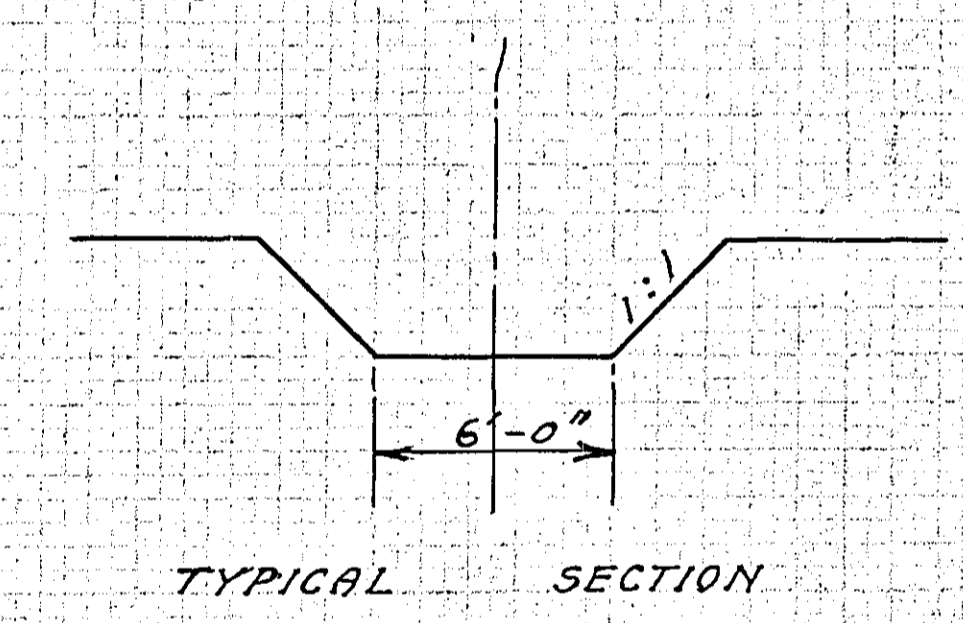
C.Y.



26
37
39
37
30
20
22
26
24
26
15

TOTAL 302 C.Y.

QUANTITIES
 3/4" EXCAVATION 302 C.Y.
 1/2" BRUSHING = 20 ACRES



DITCH No 11
 CLEANING AND BRUSHING
 PROFILE SCALE { HOR. 1" = 100'
 VER. 1" = 1'
 OFFICE OF RAMSEY CO. SURVEYOR
 APRIL - 1937
 COUNTY SURVEYOR