

PROFILE & PLAN OF COUNTY DITCH No 4

OFFICE OF RAMSEY CO. ENGR.
NOV. 7, 1933

Sta. 26+69.5 to 33+40 Portion of ditch
J.E. Swanson requests tiled to eliminate
blockage by snow.

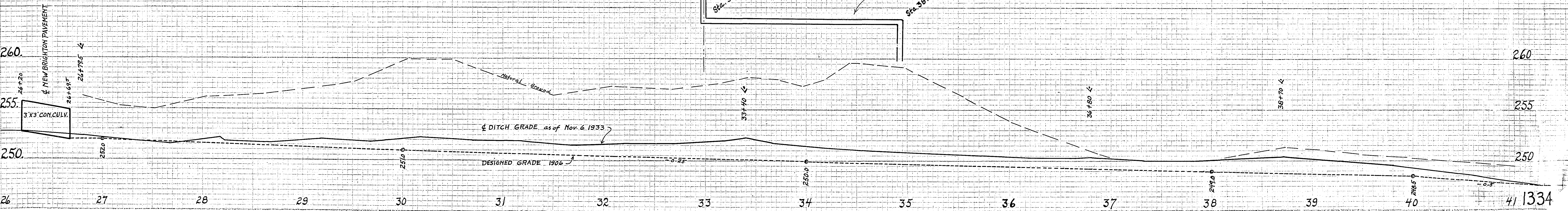
J.E. SWANSON
N.W. 1/4 of SE 1/4 of Sec. 9 T.29 R.23

MARTHA GANTZER
S.W. 1/4 of NE 1/4 of Sec. 9 T.29 R.23

CLEANING QUANTITIES

Sta. 27+80 to 33+40	65.0	Cu. Yds.
" 33+40 " 36+80	51.2	" "
" 36+80 " 41+20	57.5	" "
Total Yardage		173.7 Cu. Yds.

Sta. 36+80 to 38+70 Plowed in and
cultivated by Gantzer 1933. Causing
complaint by Swanson Nov. 2, 1933.



41 1334