

DITCH # 18

S.W. 1/4 OF N.W. 1/4
(1. A)

A. Gall.

N.W. 1/4 OF S.W. 1/4
(25. A)

N.E. 1/4 OF S.W. 1/4
(3 A)

BRANCH No 4

John Hanlos.

John Hanlos.

S.W. 1/4 OF S.W. 1/4
(7. A)

BRANCH

N.W. 1/4 OF N.W. 1/4
August Radatz.
(7. A)

MATCH LINE

34 35
3 2

Sheet 2

1332

DATA CHART OF RAMSEY COUNTY DITCH 18

OCT. 1923

CONSTRUCTION DATA							COST DATA			SOILS AND FERTILIZATION DATA							
DITCH	Length in feet as per Specifications	Length in feet as Constructed	Length in feet of parts not Constructed	Cubic Yards as per Specifications	Cubic Yards Removed	Cubic Yards not Removed	Contract Price	Amount Rec'd by Contractor	Amount of Contract Price Not Paid	Within Assessment Line							
										Acres of Peat Land	Acres of Peat Land low in Lime	Acres of Peat Land high in Lime, requiring Fertilization	Cost per Acre to Fertilize High-lime Peat to 100% Efficiency	Drainage Assessment per Acre on High-lime Peat Soil (Average)	Cost per Acre after Fertilization (Average)	Acres of Marl testing 7 1/2% Lime (Floating Bog)	Acres of Loam
Main	10300	8980	1420	19349	16781	2568				186.3	7.4	178.9	\$10.00	\$21.00	\$31.00	55.0	10.5
Branch 1	5835	5835		10432	10432					20.0	11.0	9.0	\$10.00	\$22.00	\$32.00	24.0	16.0
Branch 2	4300	4300		6761	6761					50.5	18.3	32.2	\$10.00	\$20.00	\$30.00	0.0	17.5
Branch 3	1500	1500		1416	1416					21.7	11.8	9.9	\$10.00	\$20.00	\$30.00	0.0	4.0
Branch 4	2435	2219	216	3441	3179	262				19.5	6.0	13.5	\$10.00	\$22.00	\$32.00	5.0	5.0
Branch 5	2900	2700		3055	3055					5.5	2.7	2.8	\$10.00	\$22.00	\$32.00	0.0	12.5
Branch 6	1200	1200		1148	1148					8.9	0.0	8.9	\$10.00	\$22.00	\$32.00	14.5	0.0
Totals	28270	26634	1636	45602	42772	2830	\$14,186.68	\$13,609.00	\$577.68	312.4	57.2	255.2			\$31.30 AVERAGE	98.5	65.5

WATERSHED DATA								ASSESSMENT DATA										
DITCH	Acres within Watershed	Acres of Cultivated Land	Acres of Hay Meadow	Acres of Pasture	Acres of Used Land	Acres of Land Not Used	Acres of Wet Swamp Not Used	Within Assessment Line										
								Acres of Benifited Lands Assessed	Acres of Cultivated Lands	Acres of Hay Meadow	Acres of Pasture Lands	Acres Used	Acres Not Used	Acres fit for Cultivation (Including Meadow, Pasture & Needs)	Acres of Wet Swamp (Floating Bog)	Acres of Wet Swamp that can be drained.	Acres of Wet Swamp that cannot be drained reasonably.	Acres of Needs. (Not Used)
Main	682	196.7	192.9	148.8	538.4	143.6	87.0	251.8	0.0	107.0	17.2	124.2	127.6	175.0	59.8	0.0	59.8	67.8
Branch 1	323	222.8	33.2	31.7	287.7	35.3	23.0	60.0	6.0	17.0	5.2	28.2	31.8	27.0	26.0	0.0	26.0	5.8
Branch 2	745	429.8	113.0	175.4	718.2	26.8		68.0	3.2	17.0	25.3	45.5	22.5	64.8	0.0	0.0	0.0	22.5
Branch 3	110	70.0	12.6	23.7	106.3	3.7		25.7	1.2	1.0	15.5	17.7	8.0	23.5	0.0	0.0	0.0	8.0
Branch 4	83	35.7	23.7	—	59.4	23.6	5.2	29.5	0.0	10.2	0.0	10.2	19.3	23.5	5.0	0.0	5.0	14.3
Branch 5	158	102.9	7.4	42.9	153.2	4.8		18.0	0.0	5.0	7.0	12.0	6.0	18.0	0.0	0.0	0.0	6.0
Branch 6	93	48.0	—	25.0	73.0	20.0	14.0	23.4	0.0	0.0	0.0	0.0	23.4	23.4	15.5	0.0	15.5	7.9
Totals	2194	1105.9	382.8	447.5	1936.2	257.8	129.2	476.4	10.4	157.2	70.2	237.8	238.6	355.2	106.3	0.0	106.3	132.3

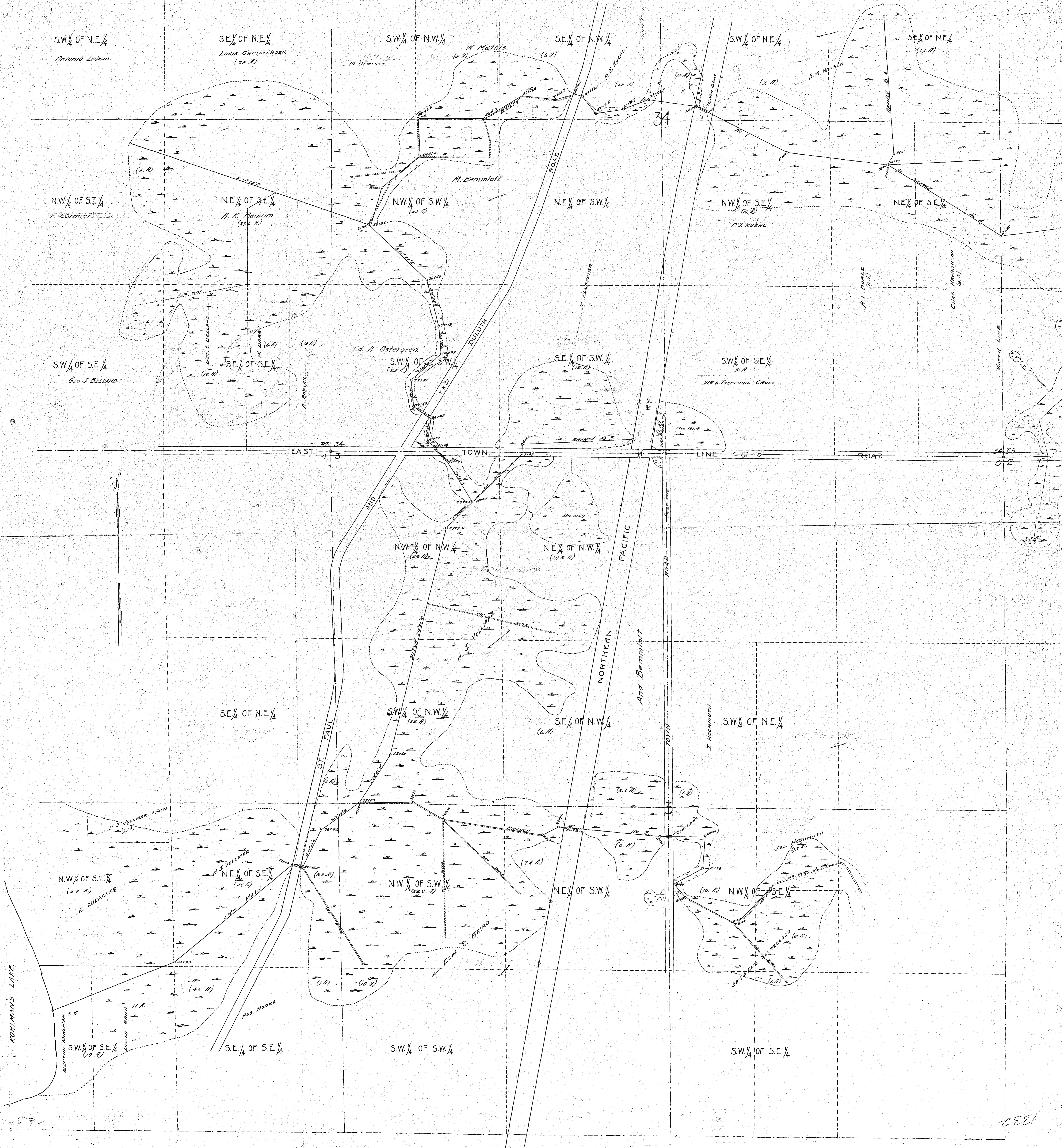
Sheet 1

DITCH No 18

RAMSEY CO. MINN.

Scale 200 ft. per inch.

F. J. ARMSTRONG - ENGINEER



1332

1332