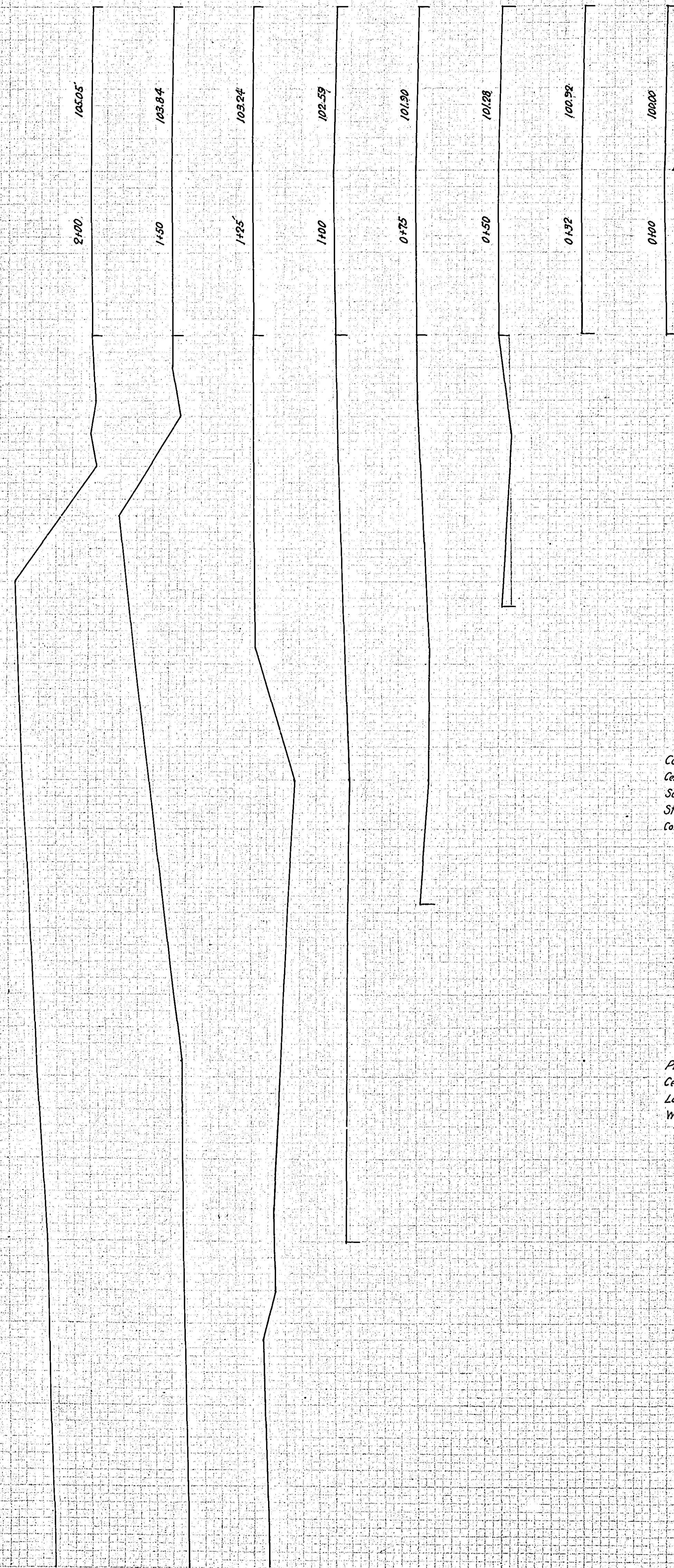
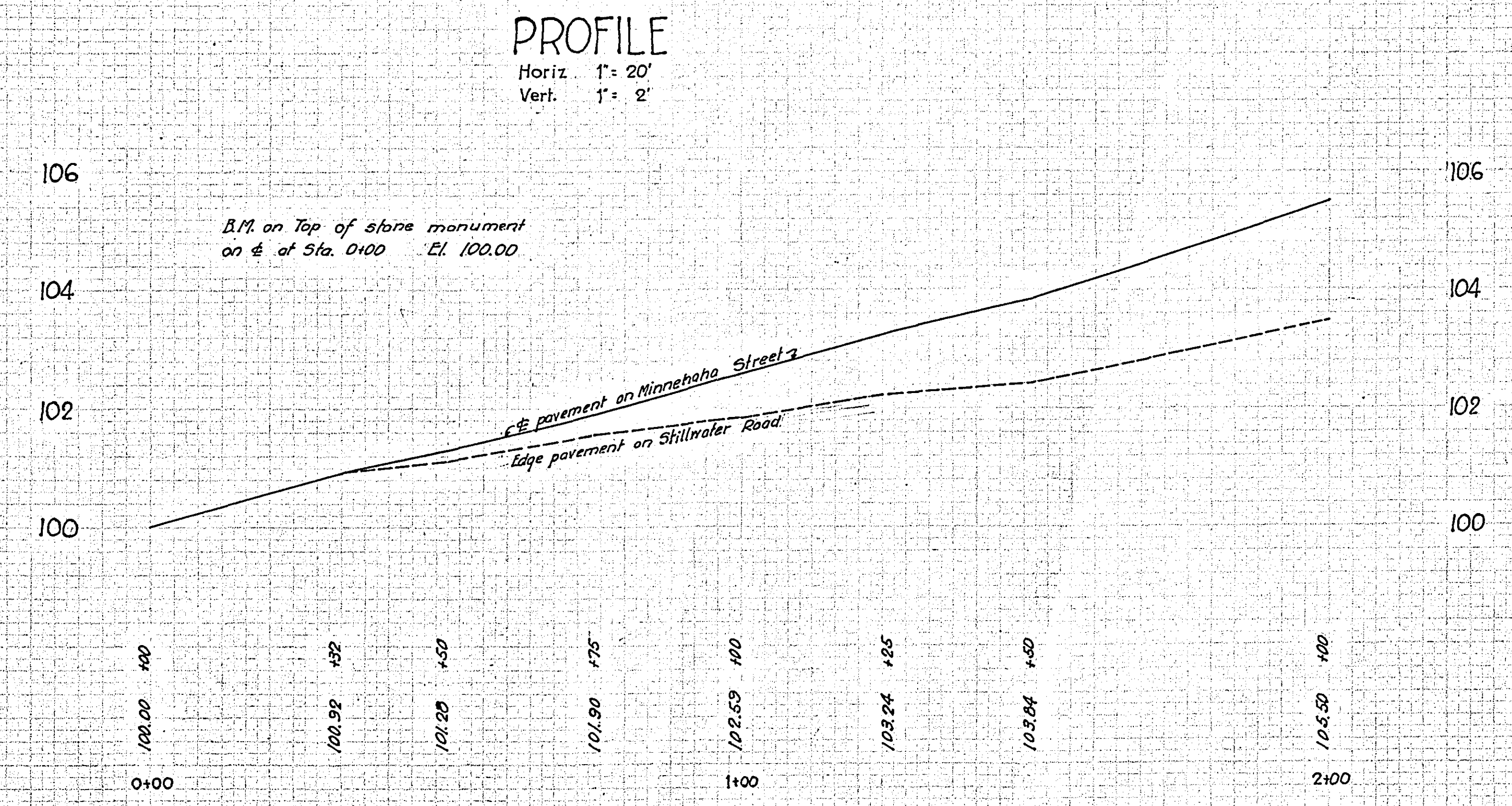
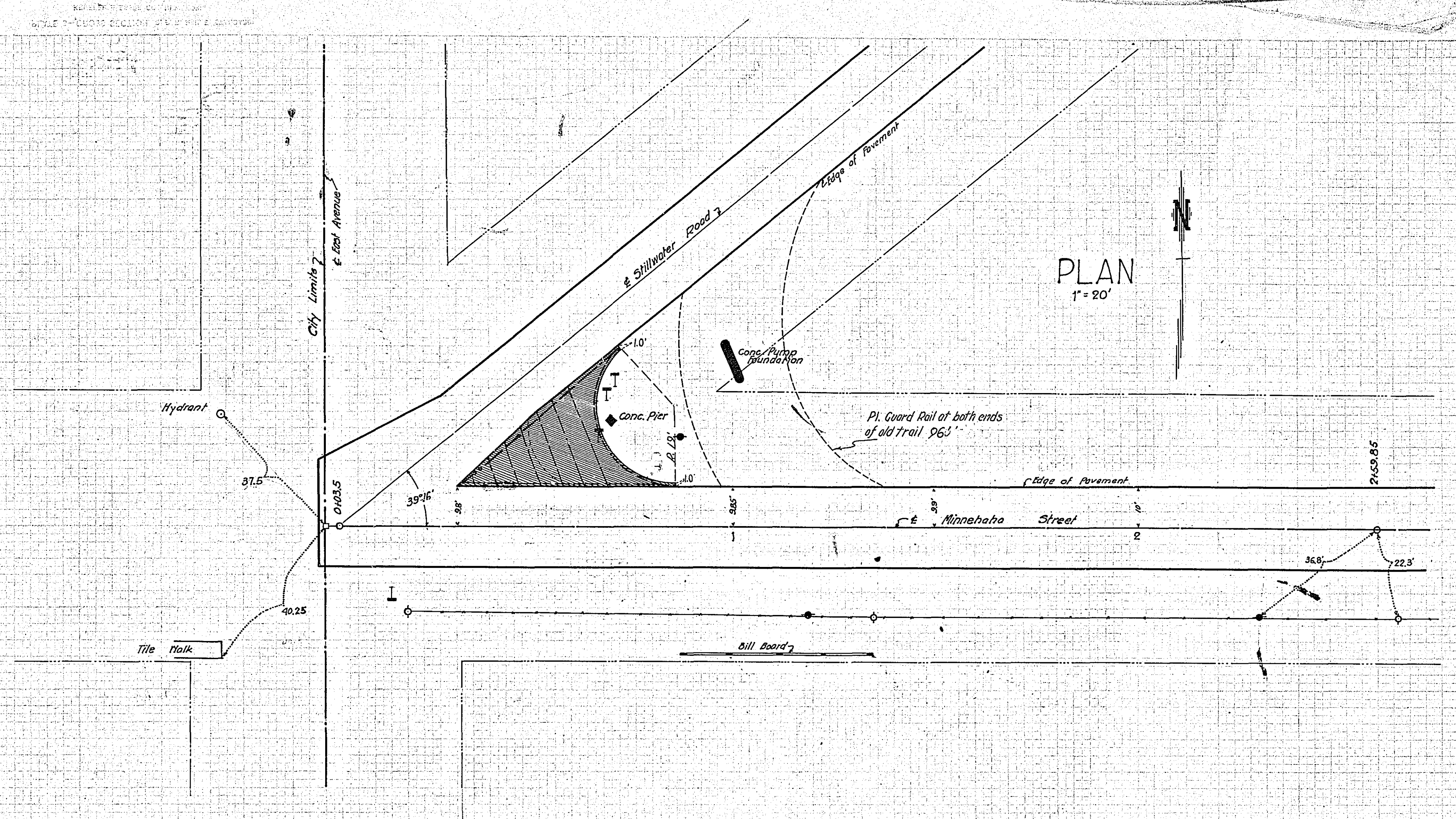


UNIVERSITY OF MINNESOTA
 CIVIL ENGINEERING DEPARTMENT
 ST. PAUL, MINN.

UNIVERSITY OF MINNESOTA
 CIVIL ENGINEERING DEPARTMENT
 ST. PAUL, MINN.



CONCRETE			
Concrete	Cu. Yds.		12.75
Cement	Sacks		75
Sand	Cu. Yds.		5.61
Stone	" "		11.35
Concrete	Sq. Yds.		72.89
STEEL			
1 bar	3/8" X 47'		
2 "	3/8" X 52'		
1 "	1/2" X 4'		
1 "	1/2" X 6'		
1 "	1/2" X 11'		
1 "	1/2" X 15'		
1 "	1/2" X 19'		
1 "	1/2" X 23'		
1 "	1/2" X 26'		
Total 3/8" steel	99 ft.		103 Lbs.
Total 1/2" steel	104 ft.		69 Lbs.
GUARD RAIL			
Planks	3" X 10" X 16'	Each	7
Cedar Posts	6" X 6"	"	14
Lag screws	3/8" X 6"	"	28
Washers	3/8"	"	28



DETAILS OF PROPOSED WIDENING OF
 MINNEHABA ST. & STILLWATER RD.
 RD. NO. 69