

N.

Louis Gagnier

Joseph Gagnier

August B. Carlson

ROAD

CENTERVILLE

Sta. 67

Stone Mark

COUNTY DITCH No 16
From Sta 67 to Centerville Road. Black lines show ditch as
staked; yellow lines top of bank of old ditch.
Scale 1 Inch = 50 Feet.

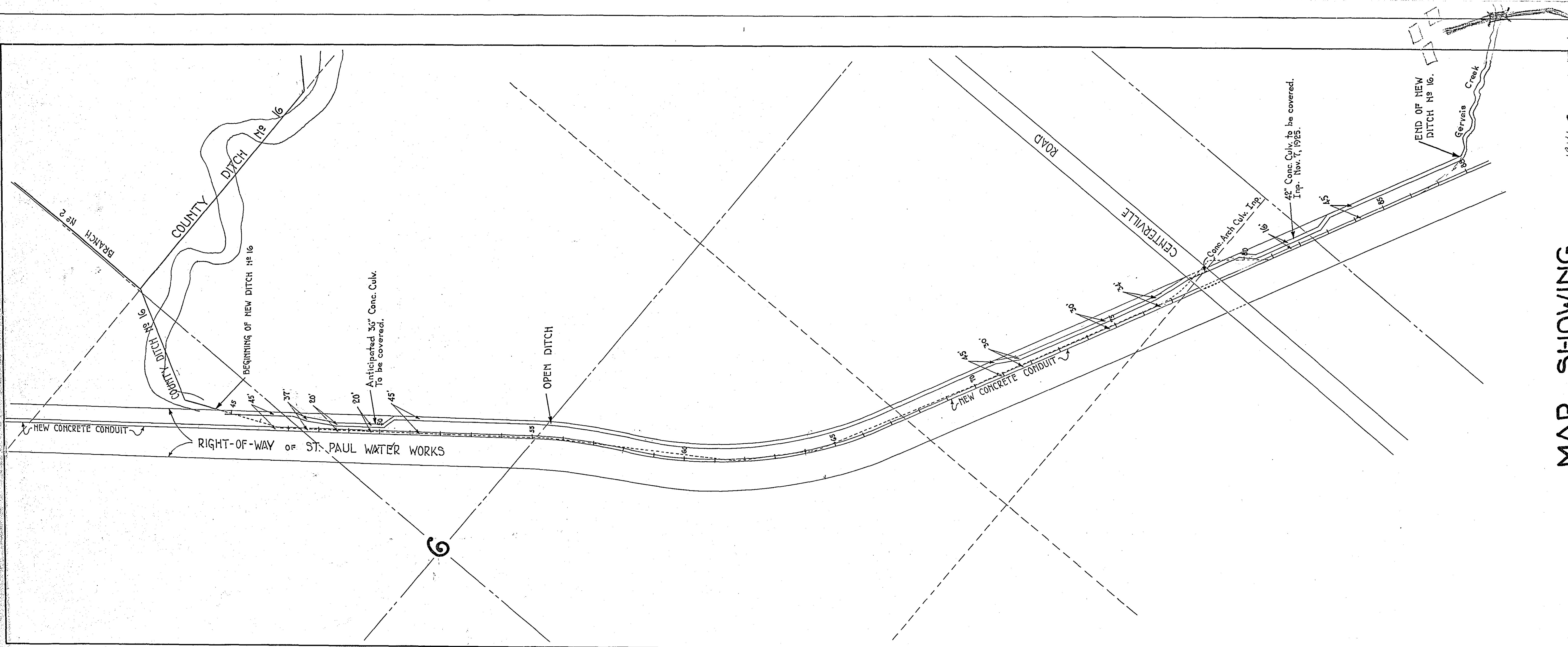
78.44
2.36
80.80

Sheet 2 1316

135

135

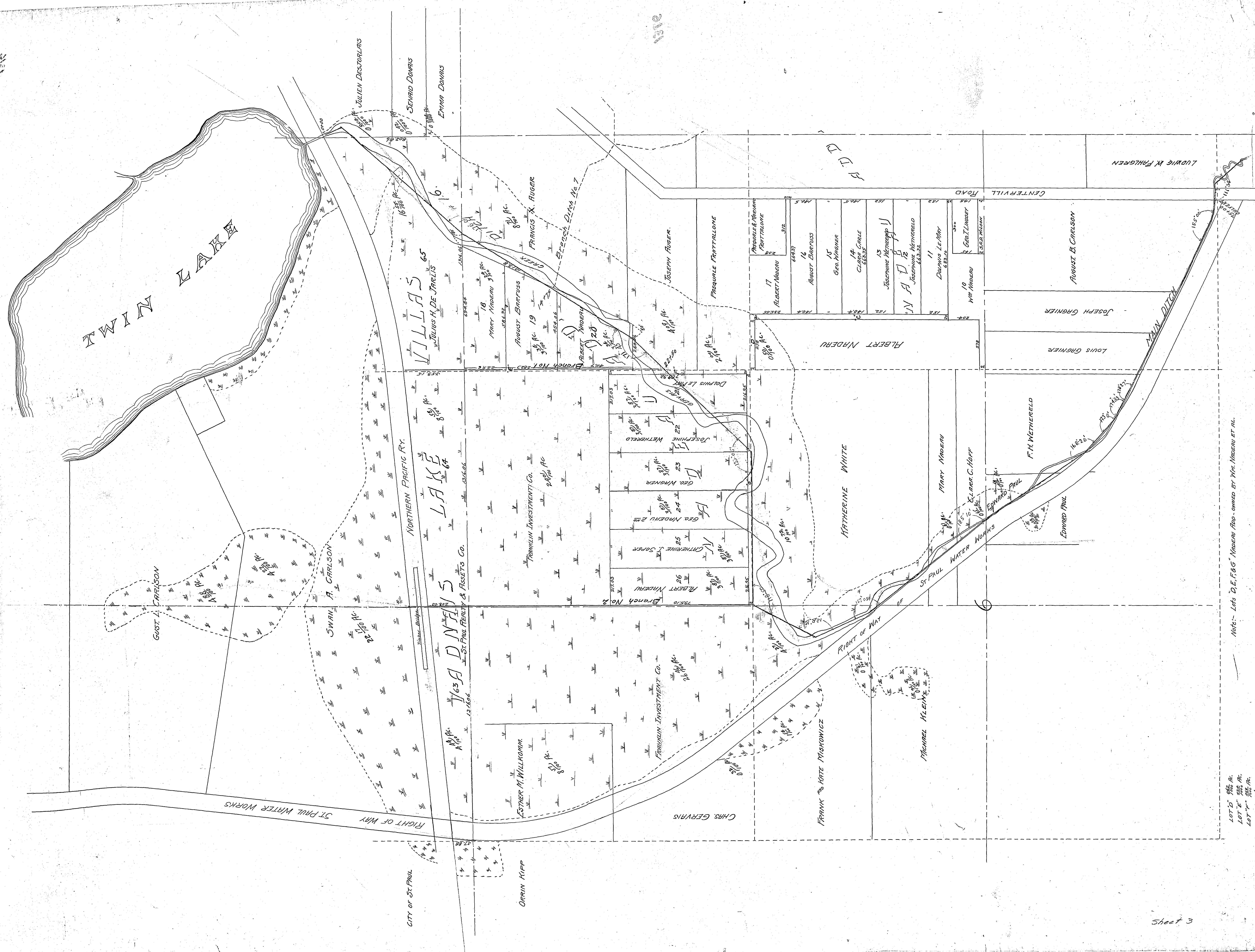
135



MAP SHOWING
 PORTION OF COUNTY DITCH No 16
 AS REDESIGNED AND CONSTRUCTED BY
 ST. PAUL WATER WORKS

NOV. 7, 1925
 OFFICE OF RAMSEY COUNTY ENGINEER.

SCALE 1 in. = 200 ft.



LOT 50 966 AC.
 LOT 51 966 AC.
 LOT 52 966 AC.
 LOT 53 966 AC.

Note: Lots D, E, F, G, Maderu Apts - owned by Mrs. Maderu et al.

COUNTY DITCH No. 16

December, 1917.

J. H. HASTINGS, COUNTY SUPERVISOR