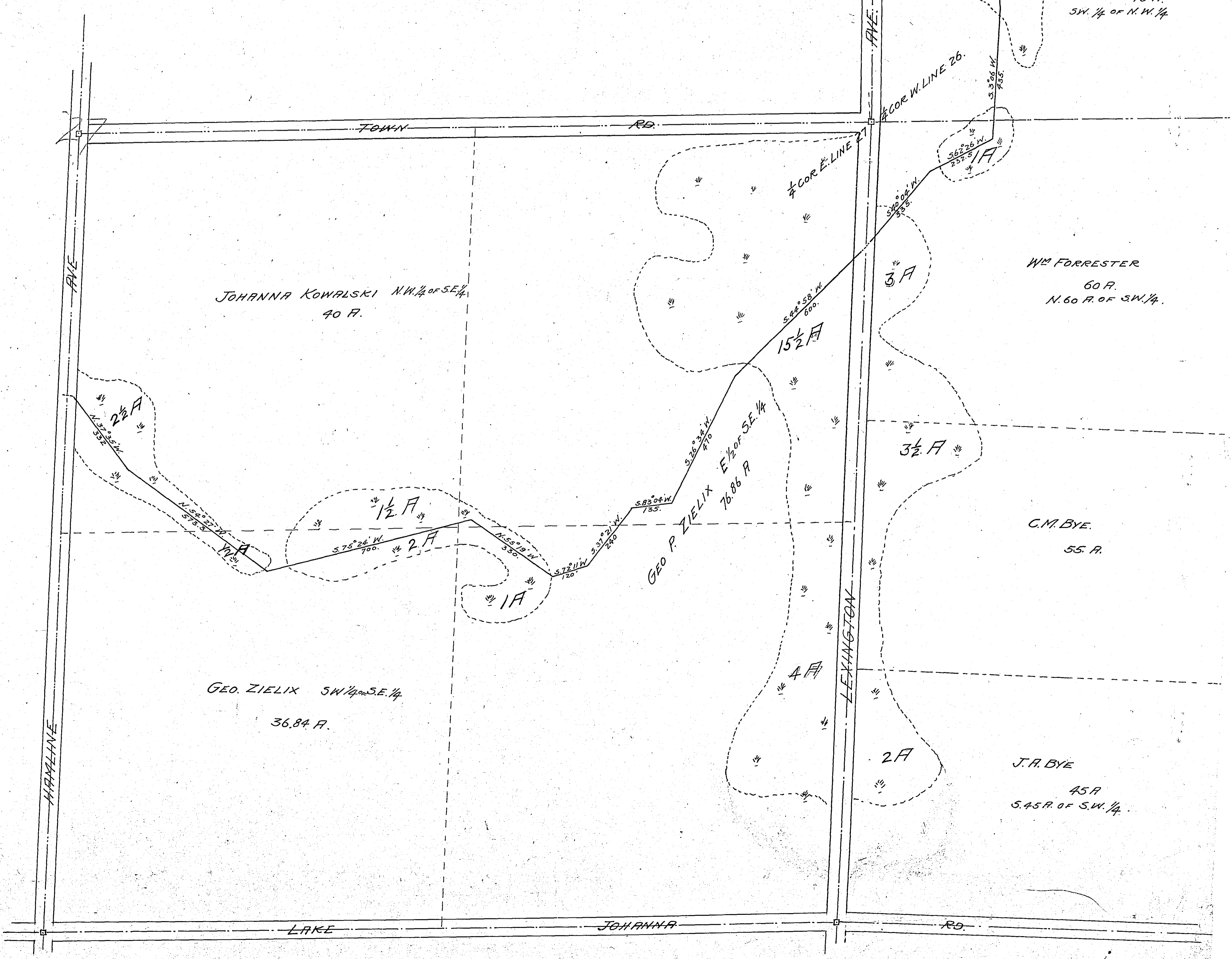


21 x 17 1/2

21 x 17 1/2

# #12 DITCH IN SEC'S 26-27, T.30, R.23

Scale 200 = 1 inch



JOHANNA KOWALSKI N.W. 1/4 of S.E. 1/4  
40 A.

GEO. ZIELIX SW 1/4 and S.E. 1/4  
36.84 A.

GEO. P. ZIELIX E 1/2 of S.E. 1/4  
76.86 A

JOHANNA KOWALSKI  
40 A.  
SW 1/4 of N.W. 1/4

WM FORRESTER  
60 A.  
N. 60 A. of SW 1/4.

C.M. BYE  
55 A.

J.A. BYE  
45 A  
S. 45 A. of S.W. 1/4.

TES

Acad. P. 10 #1628

# COUNTY DITCH No. 12

IN  
SEC'S. 26 & 27, T. 30, R. 23.

Scale 200' = 1 inch.

JP



AVE.

CORNER LINE SEC. 27,  
T. 30, R. 23

SWAMP

2-7

KOALSKA

ROAD

MARSH

MARSH

MARSH

MARSH

LEXINGTON

HAMLIN

COR. S. LINE SEC. 27.

SE. COR SEC. 27, T. 30, R. 23

#12

1312

AVE.

MARSH

MARSH

MARSH

MARSH

MARSH

MARSH

LEXINGTON

HAMLIN

COR. S. LINE SEC. 27.

SE. COR SEC. 27, T. 30, R. 23

#12

1312

2-7

KOALSKA

ROAD

MARSH

MARSH

MARSH

MARSH

LEXINGTON

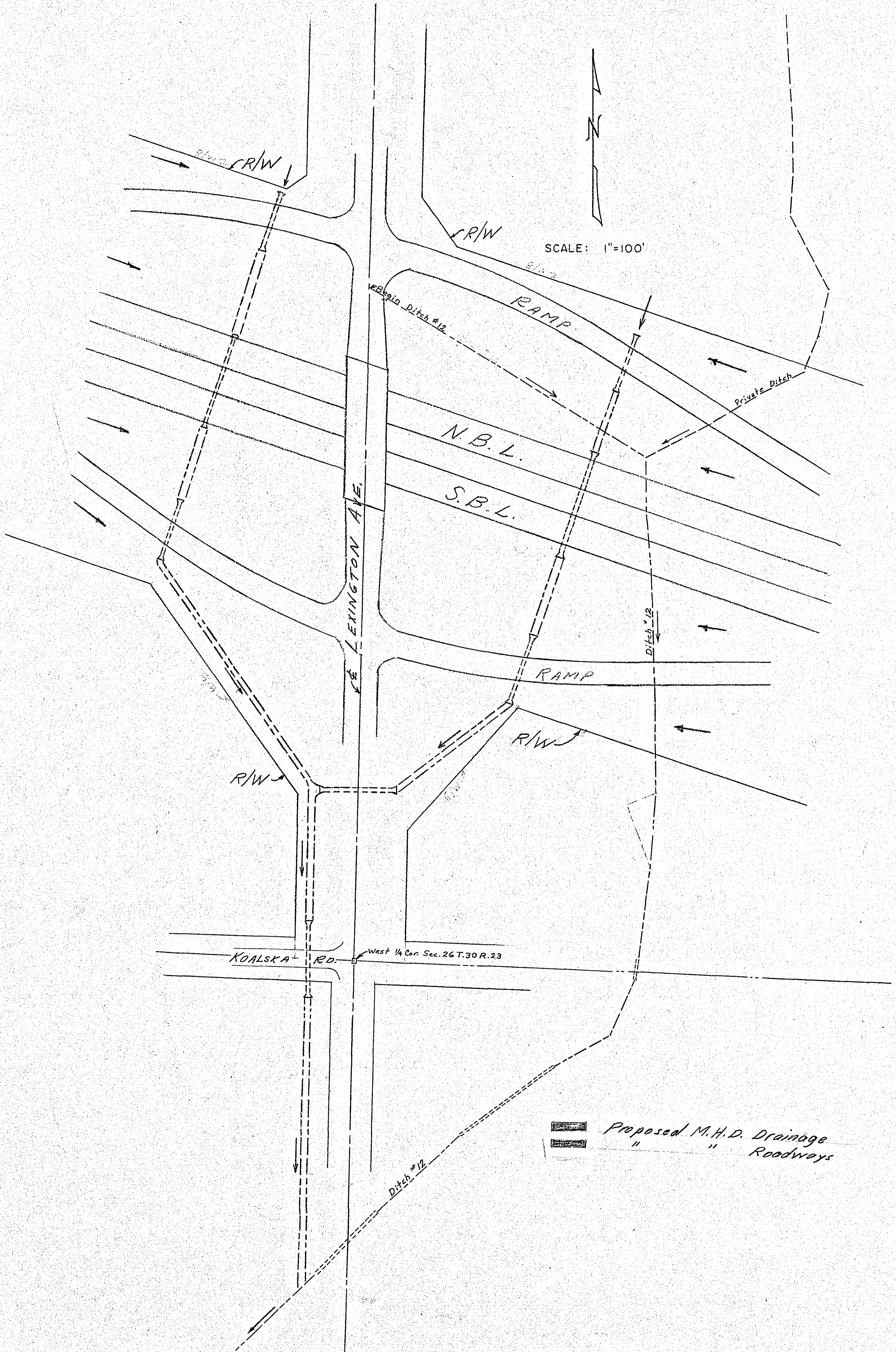
HAMLIN

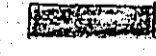
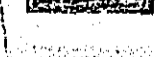
COR. S. LINE SEC. 27.

SE. COR SEC. 27, T. 30, R. 23

#12

1312



 Proposed M.H.D. Drainage  
 " " Roadways