

STATE OF MINNESOTA
DEPARTMENT OF HIGHWAYS
CONSTRUCTION PLAN FOR DRAINAGE DITCH NO. 5
TRUNK HIGHWAY NO. 35 W = 394

BETWEEN 1808' NORTH OF CO. RD. "D" AND 2978' NORTH OF CO. RD. "D"
A POINT 854.15' SOUTH AND 885.20' WEST OF THE EAST 1/4 CORNER OF SECTION 32, T30N, R23W. To A POINT 2995.1' NORTH AND 1285.13' WEST OF THE EAST 1/4 CORNER OF SECTION 32, T30N, R23W.

MINNESOTA PROJECT 1-1G 35W-3(42) 116	STATE PROJECT NO.
GROSS LENGTH FEET MILES	GROSS LENGTH 1170.00 FEET 0.222 MILES
BRIDGES-LENGTH FEET MILES	BRIDGES-LENGTH 00.00 FEET 0.000 MILES
EXCEPTIONS-LENGTH FEET MILES	EXCEPTIONS-LENGTH 00.00 FEET 0.000 MILES
NET LENGTH FEET MILES	NET LENGTH 1170.00 FEET 0.222 MILES

SCALES PLAN 1" = 100 FT
PROFILE 1" = 10 FT
VERT 1" = 10 FT

LAYOUT
Scale 1" = 2000 FT

NOTE: LENGTHS & DESCRIPTIONS
BASED ON N. B. 35W

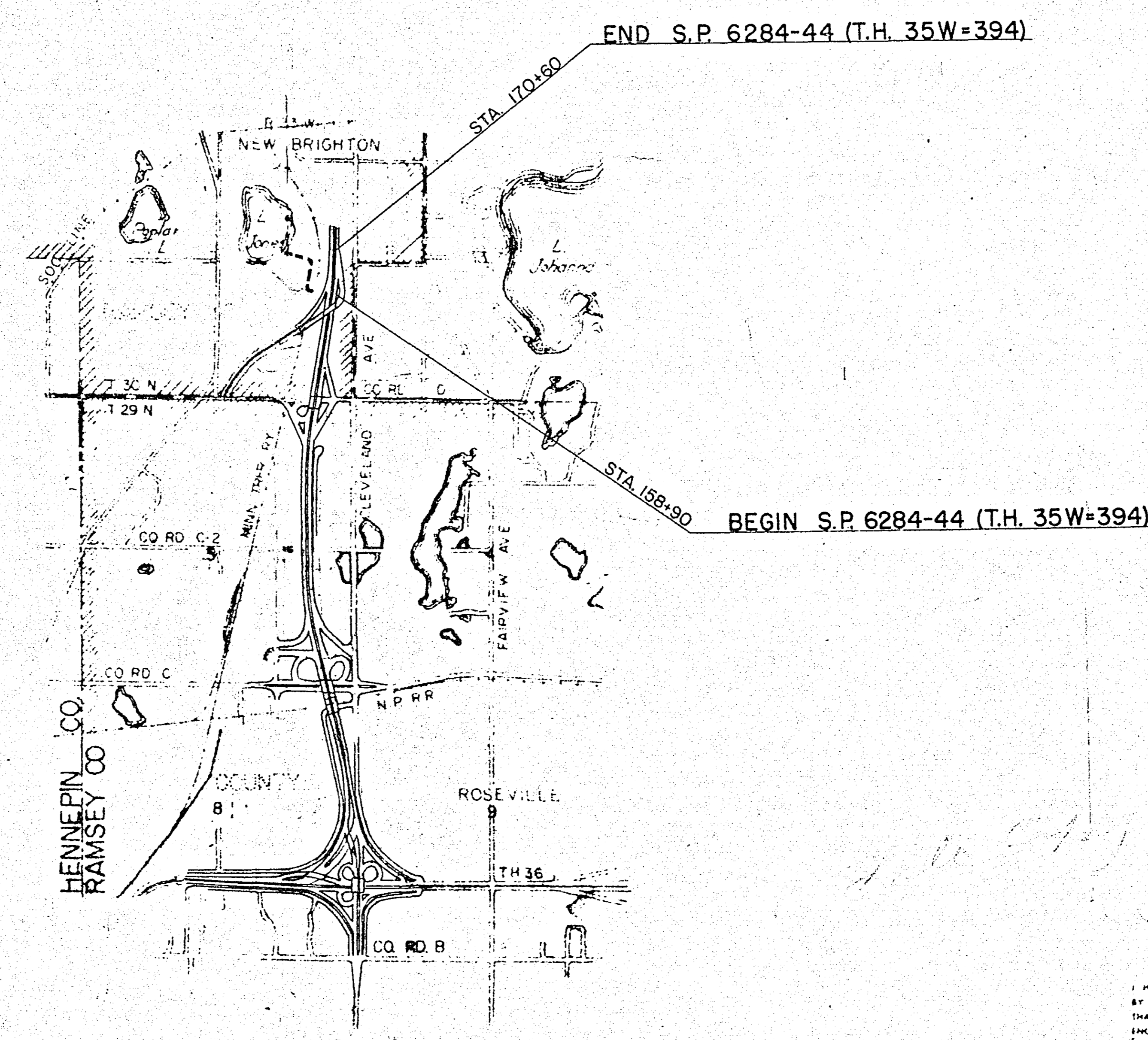
SPECIFICATIONS
THE "SPECIFICATIONS FOR HIGHWAY CONSTRUCTION" DATED MAY 1, 1959, AND SUBMITTED FOR APPROVAL BY THE DIVISION ENGINEER OF THE BUREAU OF PUBLIC ROADS ON MARCH 26, 1959, SHALL GOVERN

INDEX

SHEET NO.	DESCRIPTION
1	TITLE SHEET
2	ESTIMATED QUANTITIES
3	PLAN SHEET
4-8	CROSS SECTIONS

CONVENTIONAL SIGNS

STATE LINE	TIMBER
COUNTY LINE	BRUSH
TOWNSHIP OR RANGE LINE	DITCHES
SECTION LINE	ROCK LEDGE
QUARTER LINE	SAND
SIXTEENTH LINE	EDGE OF CUT
EIGHTH OF WAY LINE	TOE OF EMBANKMENT
PROPERTY LINE (60-100' LINE)	CATCH BASIN
VACATED PLATTED PROPERTY	MANNHOLE
CORPORATE OR CITY LIMITS	FIRE HYDRANT
TRUNK HIGHWAY CENTER LINE	ARC LAMP
RETAINING WALL	OTHER LAMP (Single Lamp)
STEAM RAILROAD	RAILROAD CROSSING SIGN
ELECTRIC RAILROAD	RAILROAD CROSSING BELL
RAILROAD RIGHT-OF-WAY LINE	ELECTRIC WARNING SIGN
CREEK	CROSSING GATE
RAPIDS OR WATERFALL	CATTLE GUARD
DRY RUN	DYERHEAD (Highway Over)
DRAINAGE DITCH	UNDERPASS (Highway Under)
HIGH TENSION LINE	ABUTMENT WALL & PIER
POWER POLE LINE	BRIDGE
TELEPHONE OR TELEGRAPH LINE	BUILDING (One Story Frame)
CULVERT	2 FRAME C CONCRETE
DROP INLET	3 FRAME 1 TILE
GUARD RAIL	4 BRICK ST STUCCO
WIND FENCE	IRON PIPE
RAILROAD SNOW FENCE	STEEL MONUMENT
BOARD OR HIGHWAY SNOW FENCE	WOOD STAKE OR NUB
STONE WALL OR FENCE	WEDGER CORNER
HEDGE	
WATER PIPE	
SEWER PIPE	
DRAIN TILE	
GRAVEL PIT	
SAND PIT	
CLAY PIT	
ROCK QUARRY	
SPRING	
WASH	
TRUNK HIGHWAY "W"	
RAILROAD "R"	
PRESENT ROAD "P"	
LIMITED ACCESS	



PIT DATA

PIT NO.	Located in
	Dead Haul
PIT NO.	Located in
	Dead Haul
PIT NO.	Located in
	Dead Haul
PIT NO.	Located in
	Dead Haul

SHEETS	REVISED	DATE	BY
2, 3, 5	7	06-28-63	W.E. SWEET
2 & 3		07-26-63	W.E. SWEET

Right of Way Approval	ENGINEER OF LANDS AND RIGHT OF WAY	19
Recommended for Approval	ROAD PLANS ENGINEER	19
Recommended for Approval	Deputy <i>Wm Jadden</i> 4/2 1963 DISTRICT ENGINEER	19
Recommended for Approval	ASSISTANT ROAD DESIGN ENGINEER	19
Recommended for Approval	ROAD DESIGN ENGINEER	19
Approved	DEPUTY CHIEF ENGINEER	19

I HEREBY CERTIFY THAT THIS PLAN WAS PREPARED BY ME OR UNDER MY DIRECT SUPERVISION AND THAT I AM A DULY REGISTERED PROFESSIONAL ENGINEER UNDER THE LAWS OF THE STATE OF MINNESOTA
Wayne E. Sweet, P.E.
DATE 6-11-63 REG NO 5091

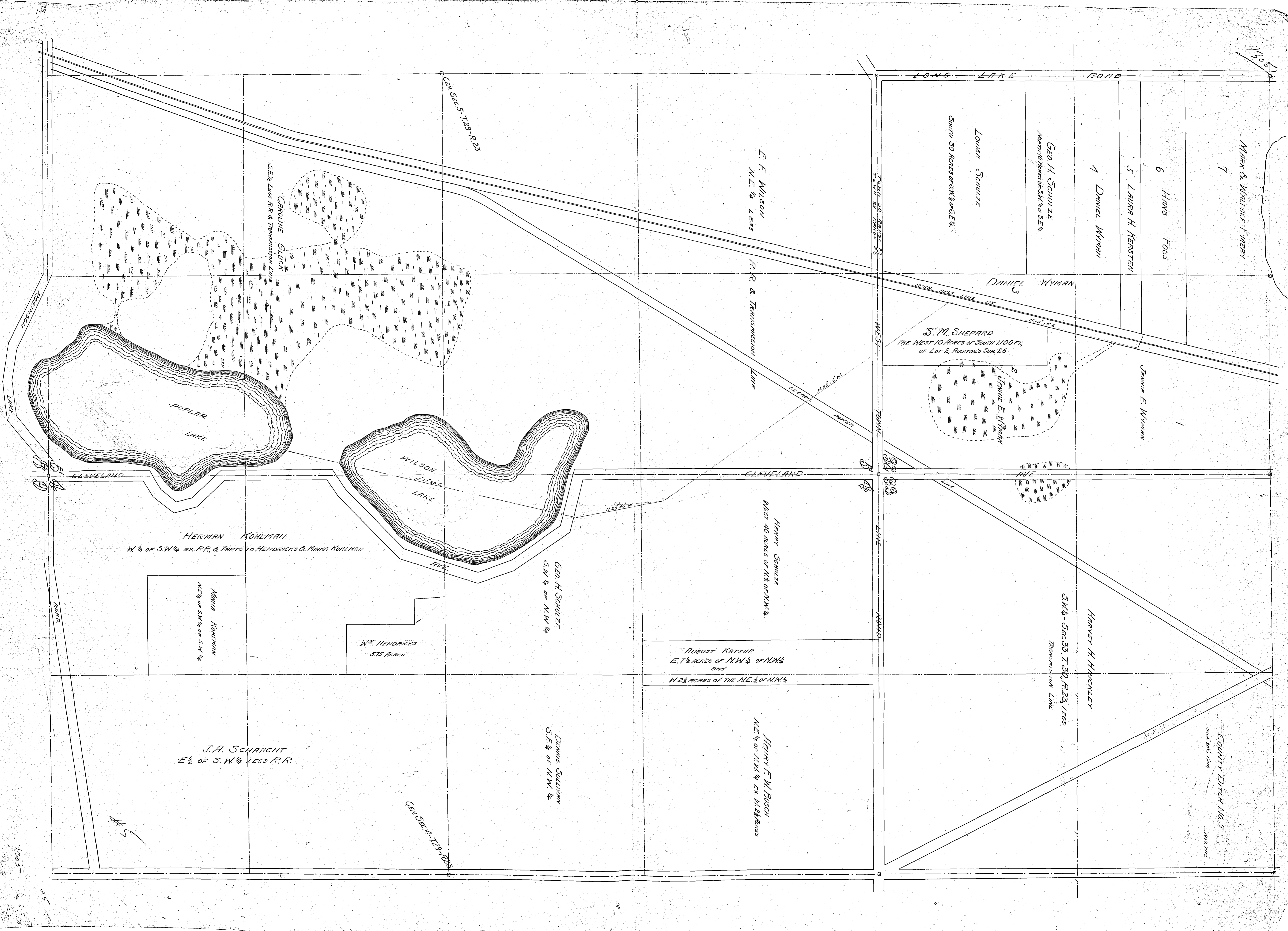
DEPARTMENT OF COMMERCE
BUREAU OF PUBLIC ROADS

APPROVED: *1305*

DIVISION ENGINEER JATE

DESIGN SQUAD W.F. MURPHY

Relocation of DITCH NO. 5
1305



MARY & WALLACE EMERY

7

HANS FOSS

5 LAURA H. KERSTEN

4 DANIEL WYMAN

GEO. H. SCHULLZE
North 10 Acres of SW 1/4 of SE 1/4

LOUISA SCHULLZE
South 30 Acres of SW 1/4 of SE 1/4

DANIEL WYMAN

S. M. SHEPARD
The West 10 Acres of South 1100 FT.
of Lot 2, Auditor's Sub. 26

JENNIE E. WYMAN

JENNIE E. WYMAN

E. F. WILSON
N.E. 1/4 LESS

R.R. & TRANSMISSION LINE

CAROLINE GLUCK
SE 1/4 Less R.R. & Transmission Line

POPLAR LAKE

WILSON LAKE

HERMAN KOHLMAN
W 1/2 of S.W. 1/4 ex. R.R. & PARTS TO HENDRICKS & MINNIE KOHLMAN

MINNIE KOHLMAN
N.E. 1/4 of S.W. 1/4 of S.W. 1/4

Wm. Hendricks
5.75 Acres

GEO. H. SCHULLZE
S.W. 1/4 of N.W. 1/4

HENRY SCHULLZE
WEST 40 ACRES OF N 1/2 of N.W. 1/4

AUGUST KATZUR
E. 7 1/2 ACRES OF N.W. 1/4 of N.W. 1/4
and
W. 2 1/2 ACRES OF THE N.E. 1/4 of N.W. 1/4

HENRY F. W. BUSCH
N.E. 1/4 of N.W. 1/4 ex. W. 2 1/2 ACRES

DENNIS SULLIVAN
S.E. 1/4 of N.W. 1/4

J.A. SCHAACHT
E 1/2 of S.W. 1/4 LESS R.R.

HARVEY H. HINCKLEY

S.W. 1/4 - Sec. 33, T. 30, R. 23, LESS
TRANSMISSION LINE

COUNTY DITCH No. 5

APR 1912

CEN. SEC. 5 - T. 29 - R. 23

CEN. SEC. 4 - T. 29 - R. 23

LONG LAKE ROAD

CLEVELAND

CLEVELAND

AVE.

WEST TOWN LINE ROAD

ROBINSON LAKE

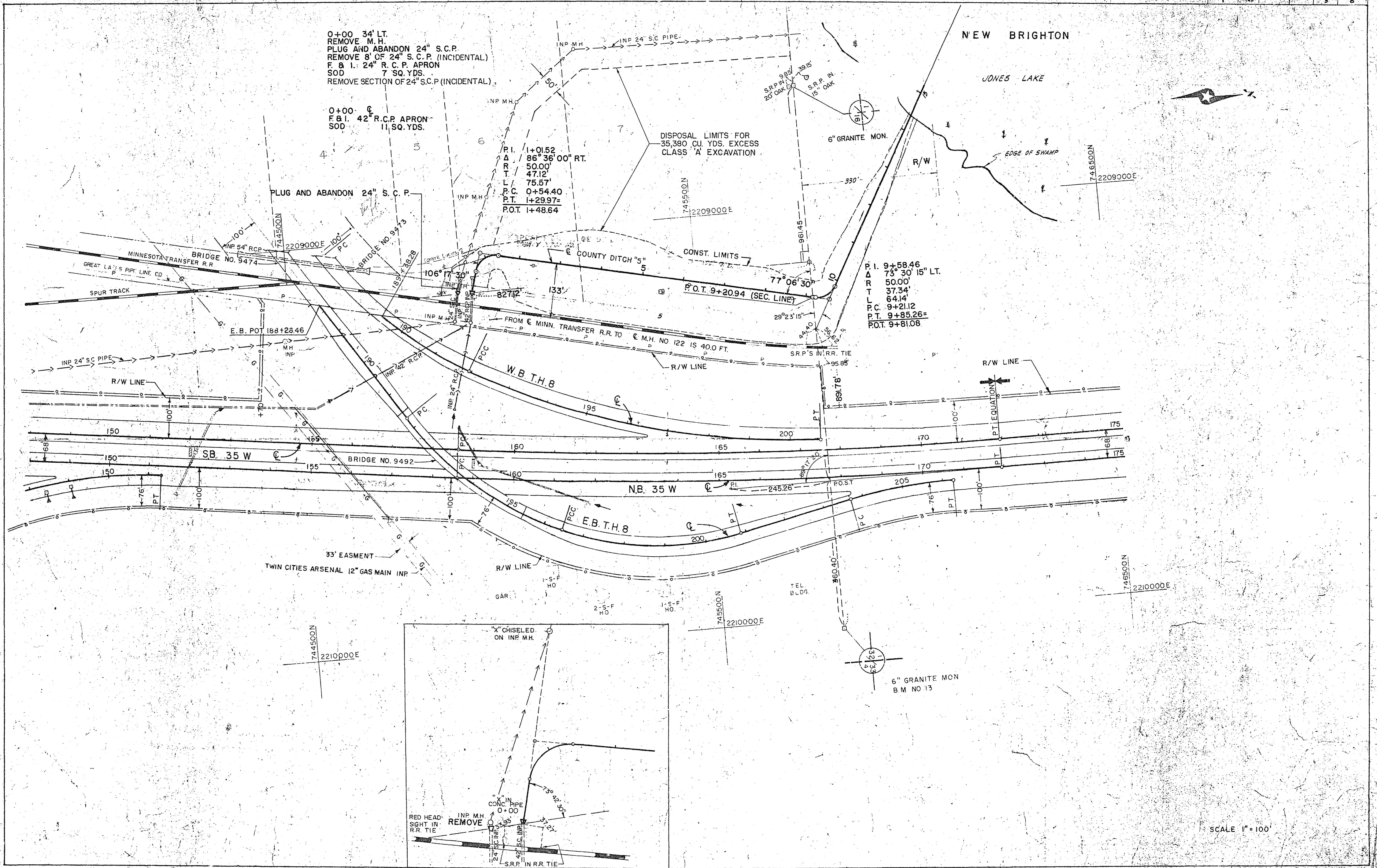
ROAD

13 1/2

130

1305

45



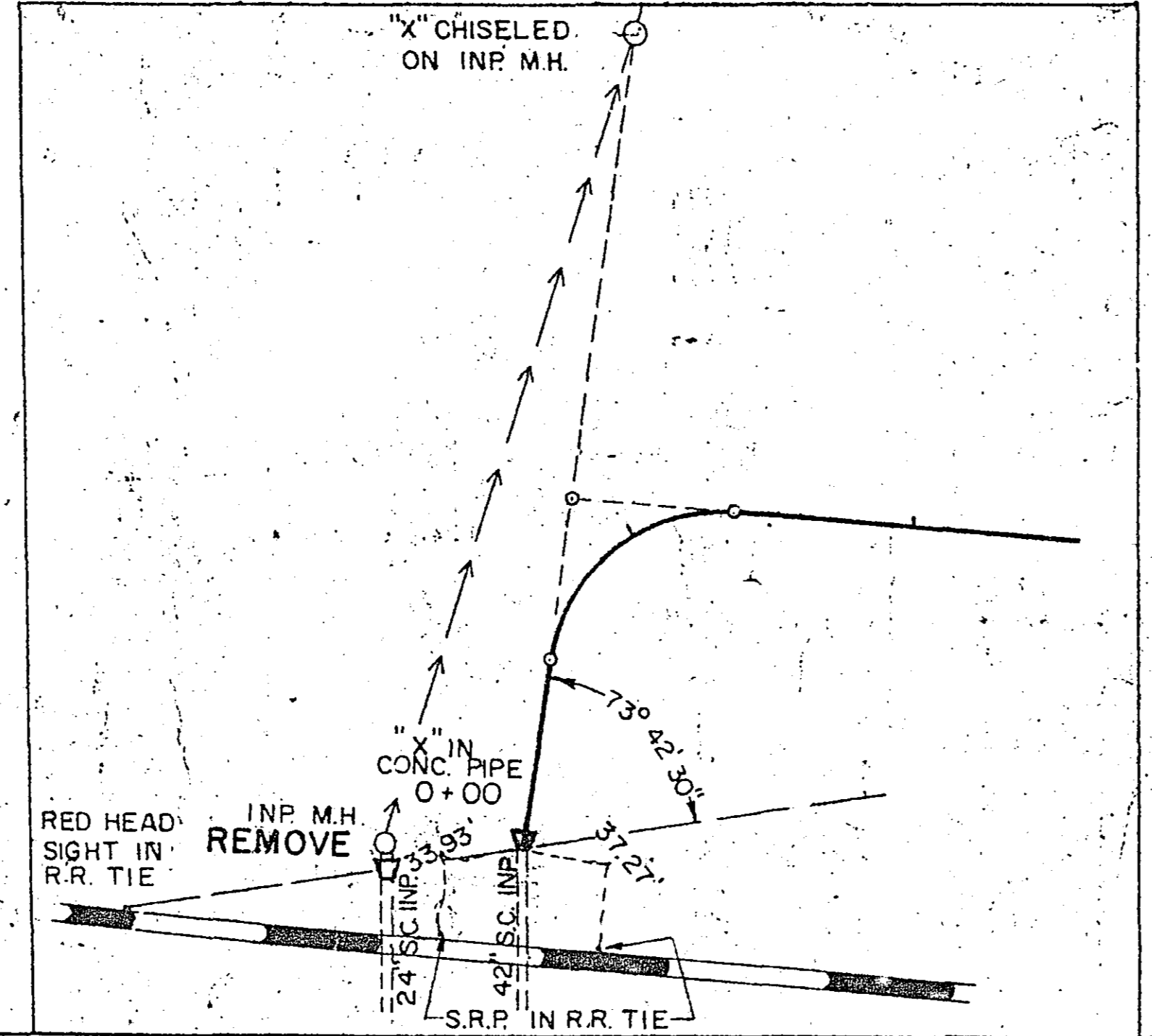
0+00 34' LT.
 REMOVE M.H.
 PLUG AND ABANDON 24" S.C.P.
 REMOVE 8' OF 24" S.C.P. (INCIDENTAL)
 F. & I. 24" R.C.P. APRON
 SOD 7 SQ. YDS.
 REMOVE SECTION OF 24" S.C.P. (INCIDENTAL)

0+00
 F. & I. 42" R.C.P. APRON
 SOD 11 SQ. YDS.

P.I. 1+01.52
 Δ 86° 36' 00" RT.
 R 50.00'
 T 47.12'
 L 75.57'
 P.C. 0+54.40
 P.T. 1+29.97=
 P.O.T. 1+48.64

DISPOSAL LIMITS FOR
 35,380 CU. YDS. EXCESS
 CLASS 'A' EXCAVATION

P.I. 9+58.46
 Δ 73° 30' 15" LT.
 R 50.00'
 T 37.34'
 L 64.14'
 P.C. 9+21.12
 P.T. 9+85.26=
 P.O.T. 9+81.08



STATEMENT OF ESTIMATED QUANTITIES				
ITEM NO.	ITEM	UNIT	TOTAL ESTIMATED QUANTITIES	TOTAL FINAL QUANTITIES
2101.502	Clearing	Tree	3	
2101.507	Grubbing	Tree	6	
(1) 2104.511	Remove Manholes or Catch Basin	Structure	1	
(2) 2108.511	Channel Excavation (Class A.)	Cubic Yard	42,722	
2515.541	Furnish and Install Concrete Aprons for 24" Sectional Conc. Pipes	Apron	1	
2515.541	Furnish and Install Concrete Aprons for 42" Sectional Conc. Pipes	Apron	1	
2574.501	Roadside Seeding	Acre	5	
2574.511	Seed	Pound	160	
2574.521	Commercial Fertilizer	Ton	2	
(3) 2575.501	Surface Mulching Type 1	Ton	5	
(3) 2575.506	Surface Mulching Type 6	Gallon	540	
2576.501	Sodding	Square Yard	18	

- Includes removal of S. C. pipe in place at M. H.
- Includes 35,380 cu. yds. excess material to be disposed of on adjacent R. R. property as shown on sheet no. 3.
- Includes all backslopes and ditch bottoms.

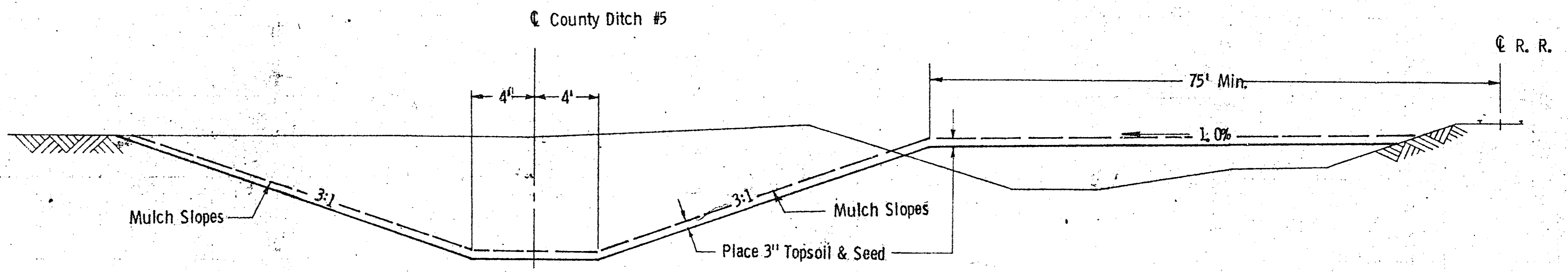
The following Standard Detail plates, approved by the Bureau of Public Roads, shall apply on this project.

STANDARD DETAIL PLATES	
PLATE NO.	DESCRIPTION
3100 B	Concrete Apron for Reinforced Concrete Pipe
3102 A	Concrete Apron for Reinforced Concrete Pipe
9102 A	Sodding At Pipe Culvert Ends

CONSTRUCTION NOTES

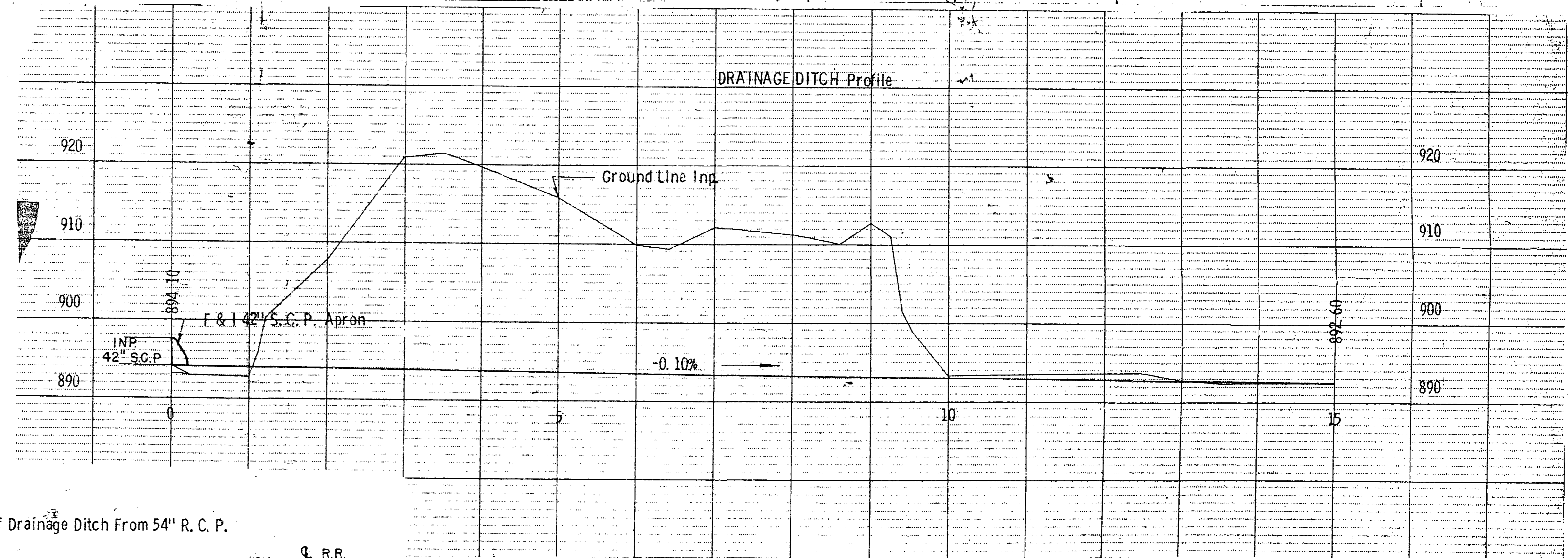
- Railroad traffic must be maintained at all times and care must be taken to protect ballast in place.
- The ditch cleanout from outlet of 54" R. C. P. to in place 42" R. C. P. shall be done as directed by the engineer. Quantities included in Class A Channel Excavation.

TYPICAL SECTION OF DRAINAGE DITCH



PUBLIC UTILITIES

LINE	SHEET NO.	LOCATION	ITEM IN PLACE	LINE	REMARKS	OWNERSHIP
1		County Ditch #5 0+86 32' Lt.	Power Pole	1	Relocate	Northern States Power Co.
2		County Ditch #5 3+37 12' Rt.	Power Pole	2	Relocate	Northern States Power Co.
3		County Ditch #5 6+08 10' Rt.	Power Pole	3	Relocate	Northern States Power Co.
4		County Ditch #5 8+67 8' Rt.	Power Pole	4	Relocate	Northern States Power Co.



Typical Section of Drainage Ditch From 54" R. C. P.

