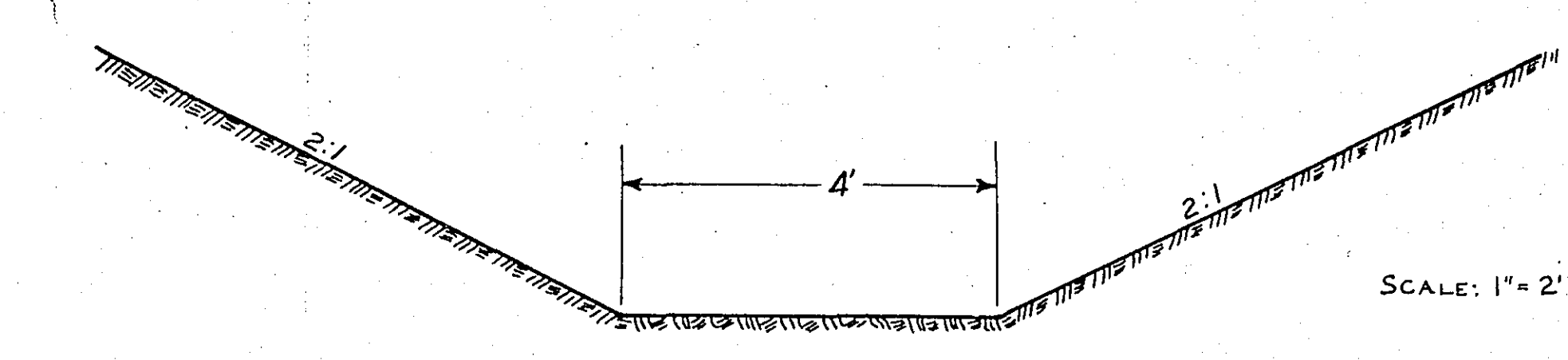
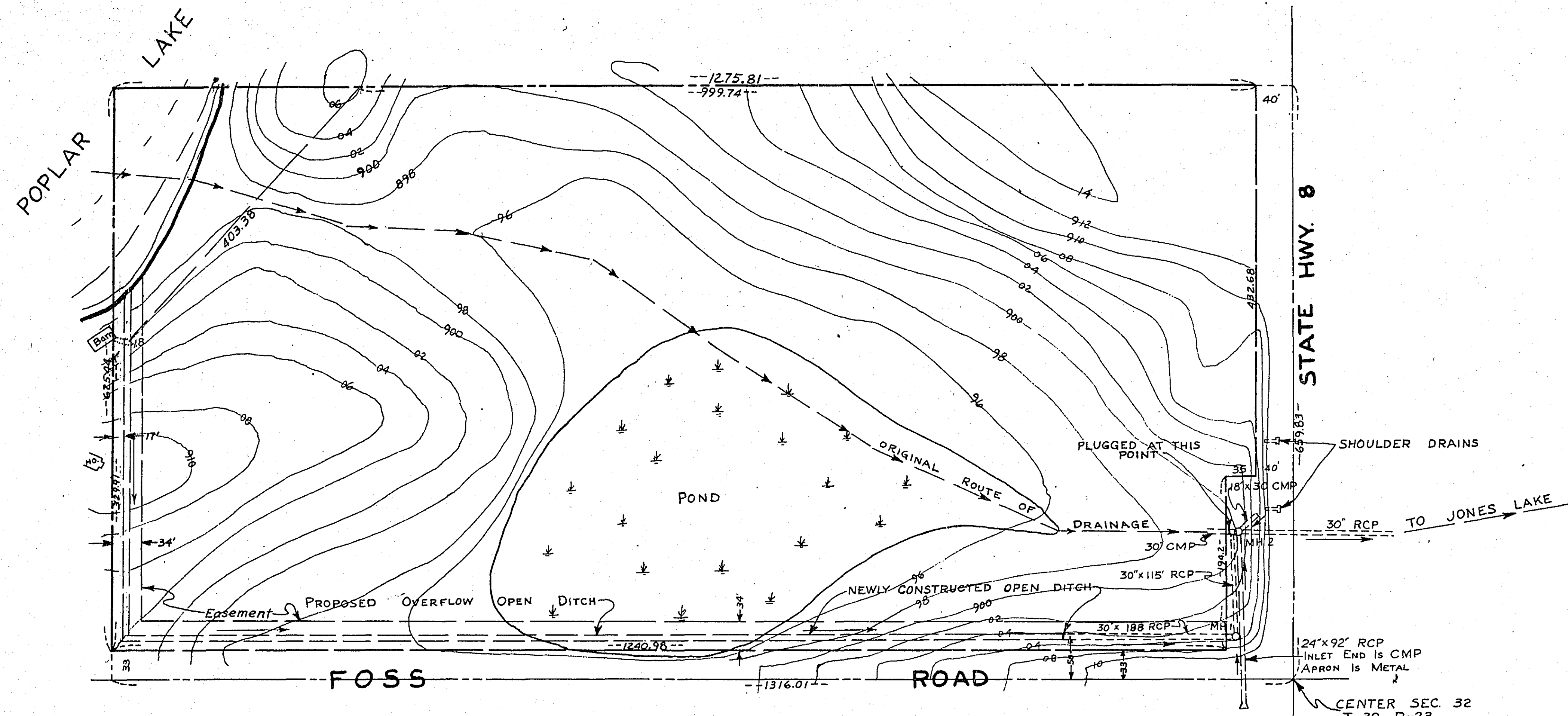


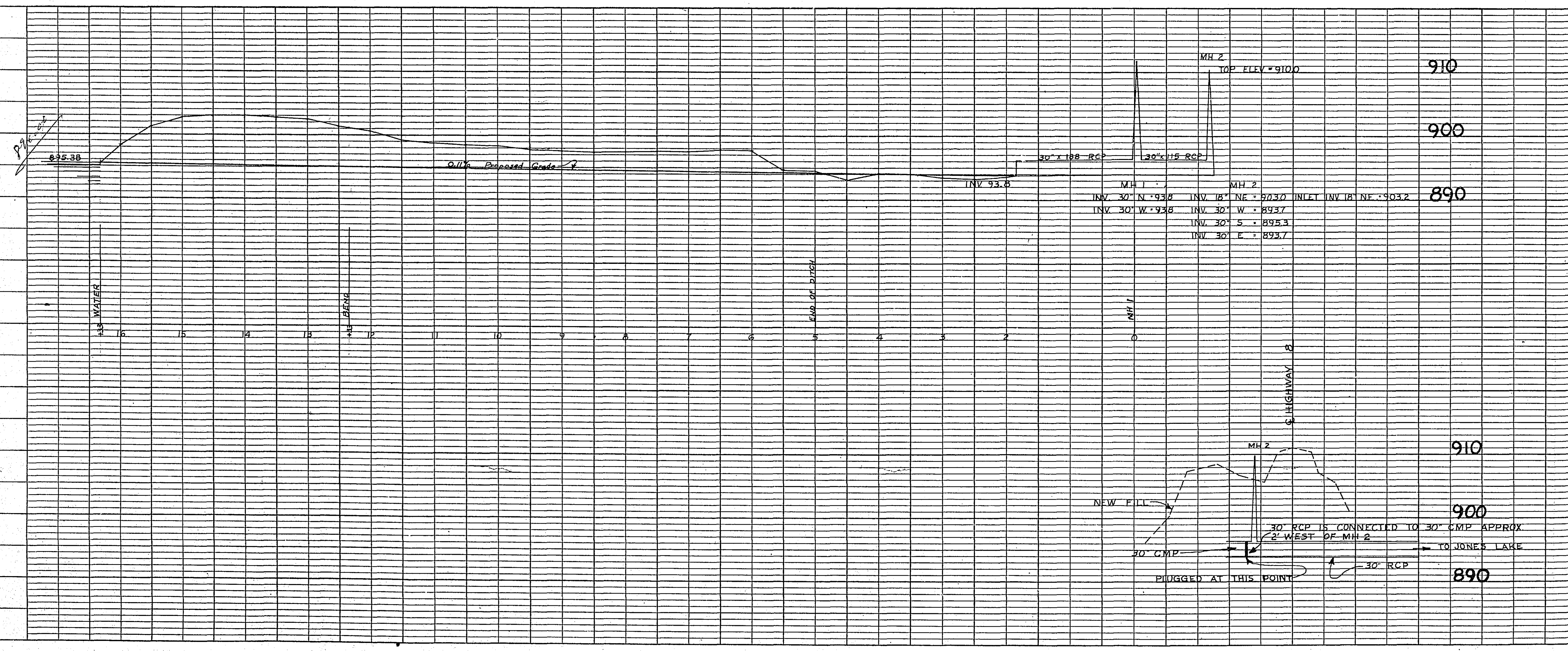
PLAN	SURVEYED	DATE
	PLOTTED	
	NOTE BOOK	
	NO. OF WAY CHECKED	
	RT. OF WAY CHECKED	
	NO.	



TYPICAL CROSS-SECTION

NOTE:
Contours from 1944 map.

PROFILE	SURVEYED	DATE
	GRADES CHECKED	
	B. M. NOTED	
	STRUCTURE NOTATIONS CHECKED	
	NO.	



B.M.	SEK	PP	W. OF	HWY 8,	N. SIDE	FOSS	RD.	ELEV.	897.8
								W.L. ELEV.	POPLAR LAKE = 896.0
								W.L. ELEV.	JONES LAKE = 893.6

SCALE:
1"=100' HORIZ.
1"=10' VERT.

RAMSEY COUNTY, MINN.
COUNTY DITCH NO. 3 REVISION

MILNER W. CARLEY & ASSOCIATES
CONSULTING ENGINEERS
400 W. Hwy. 76
St. Paul, Minn.

18 Fourth Ave., S.E.
St. Cloud, Minn.

I hereby certify that this plan, specification, or report was prepared by me or under my direct supervision and that I am a duly registered Professional Engineer under the laws of the State of Minnesota.

SURVEY BY: *FW*
DESIGNED BY: *CS*
DRAWN BY: *RFM*
APPROVED BY: *DC*

REVISIONS

SHEET 1 OF 1 SHEETS Date *Nov 2, 1961* Reg. No. *3227* COMM. NO. *61-381*

1303
DWM
12/21/61