

0+00 Inp. 35" X 36" C.M.
 0+97 RR Inp. 15" X 24" C.M. Rem. & Rep.
 1+01 LT Inp. 12" X 14" C.M.
 1+77 Inp. 12" X 30" C.M. Remove
 2+52 RR Inp. 12" X 20" C.M. Remove
 4+03 LT Inp. 9" X 20" W.R. Remove
 5+95 RR Inp. 10" X 28" C.M. Remove
 6+59 LT Inp. 12" X 45" C.M. Remove
 6+85 RR Inp. 12" X 20" C.M. Remove
 7+37 RR Inp. 12" X 20" C.M. Remove
 8+13 Inp. 12" X 20" C.M. Remove
 8+14 RR Inp. 12" X 20" C.M. Remove
 9+09 RR Inp. 12" X 20" C.M. Remove
 10+22 LT Inp. 12" X 24" C.M. Remove
 10+74 LT Inp. 12" X 5" K.R. Remove
 11+74 LT Inp. 12" X 14" C.M. Remove
 13+25 LT Inp. 9" X 14" K.R. Remove
 14+65 LT Inp. 12" X 14" C.M. Remove
 15+98 Inp. 12" X 36" C.M. Remove
 16+15 RR Inp. 12" X 28" C.M. Remove
 16+43 LT Inp. 12" X 18" C.M. Remove
 18+75 LT Inp. 10" X 33" C.M. Remove
 23+43 LT Inp. 8" X 11" K.R. Remove
 11+04 RR Pl. 15" X 40" C.M.
 13+04 LT Pl. 15" X 20" C.M.
 18+75 LT Pl. 15" X 40" C.M.
 21+25 RR Pl. 15" X 40" C.M.

0+02.5 Manhole 15" RR
 Present elev. 931.52
 Proposed " 931.43

6+52.5 Manhole 15" RR
 Present elev. 932.18
 Proposed " 931.82

11+05 Manhole 2" RR
 Present elev. 932.38
 Proposed " 932.08

13+03.5 Manhole 2" RR
 Present elev. 932.54
 Proposed " 932.20

16+15 Manhole 2" RR
 Present elev. 932.41
 Proposed " 932.39

18+73.5 Manhole 27" RR
 Present elev. 933.08
 Proposed " 932.54

21+23.5 Manhole 33" RR
 Present elev. 932.92
 Proposed " 932.69

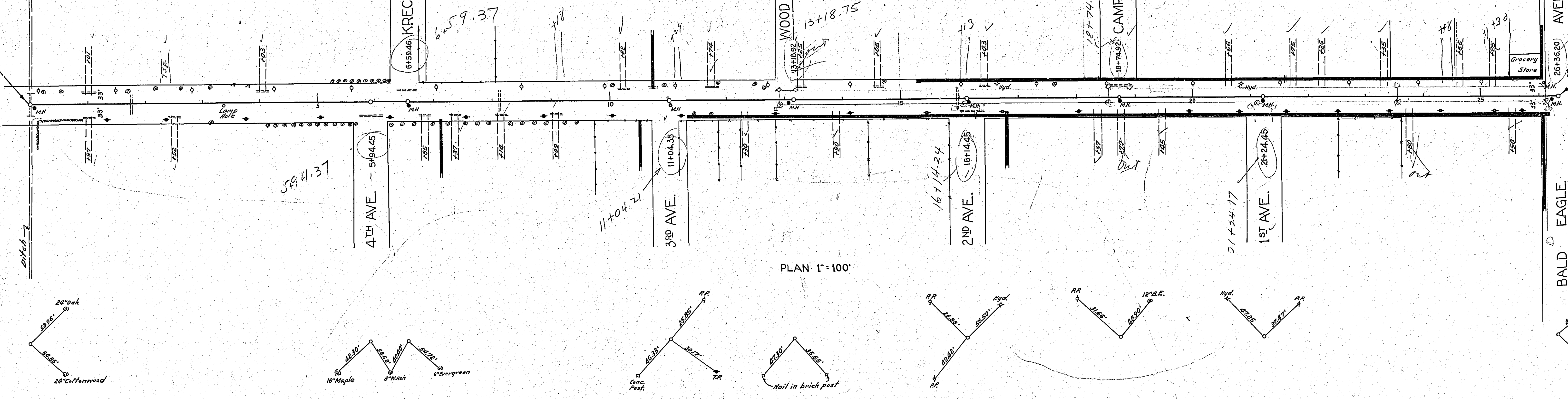
26+23 Manhole 8" RR
 Present elev. 933.18
 Proposed " 932.99

Pencil figures are proportioned to agree with changes by walk with Chapman Aug 12 to 1942
 wjg
 26+35.85
 26+36.20
 .99987
 26+35.85+

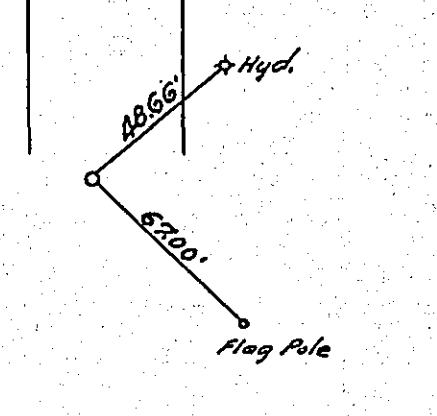
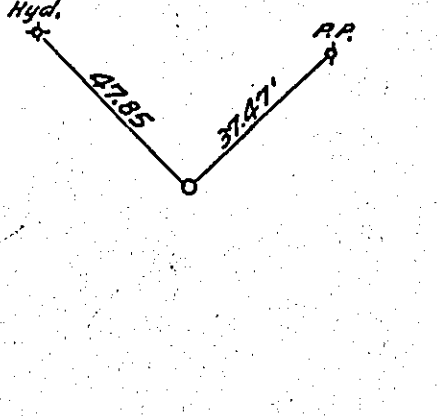
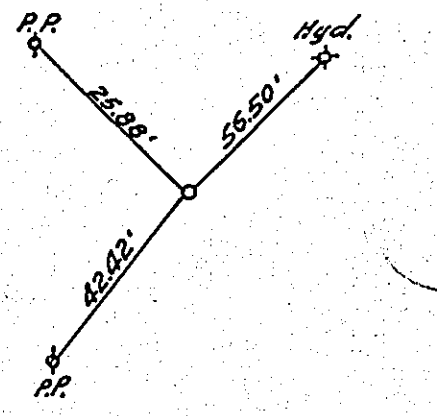
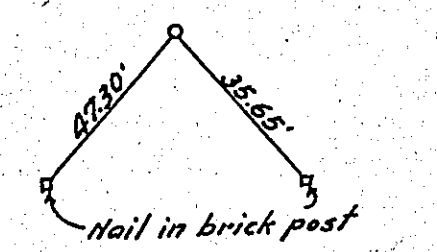
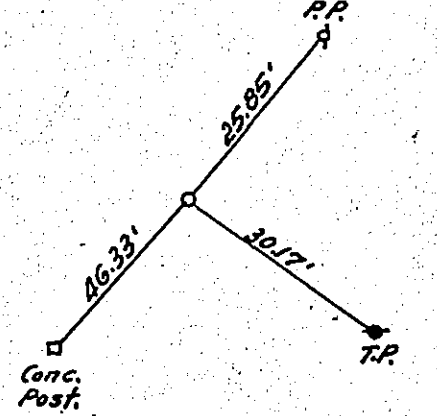
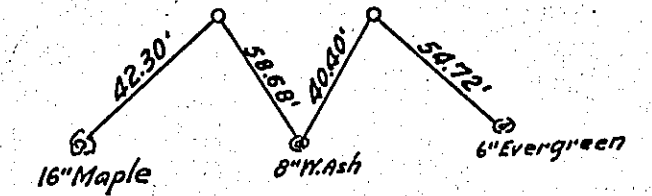
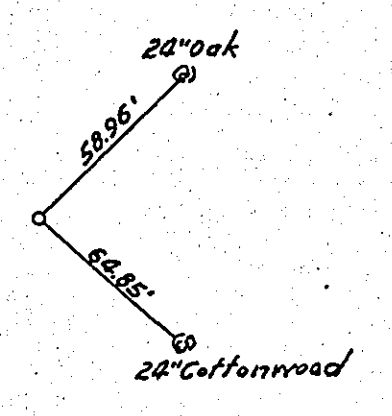
PLAN	SUPPLIED	DATE
NOTE BOOK	ALIGNED	
BY		
DATE		

BEGINNING OF PROJ. STA. 0+00

END OF PROJ. STA. 26+26



PLAN 1" = 100'

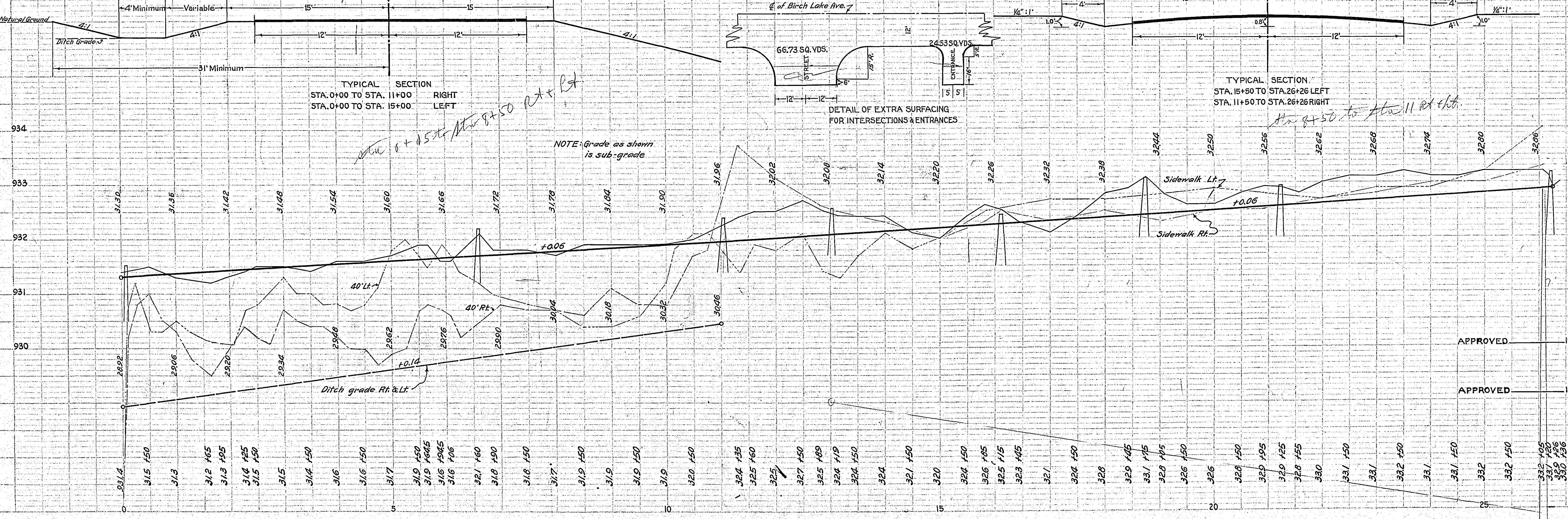


B.M. Spk. in 24" oak
 23' Lt. Sta. 0+54
 Elev. 931.79

B.M. Spk. in T.P.
 25' Rt. Sta. 7+55
 El. 931.76

B.M. Top of hydrant
 25' Lt. of sta. 16+65
 El. 935.24

B.M. - U.S.G.S.
 In school yard
 El. 933.29



TYPICAL SECTION
 STA. 0+00 TO STA. 11+00 RIGHT
 STA. 0+00 TO STA. 15+00 LEFT

DETAIL OF EXTRA SURFACING FOR INTERSECTIONS & ENTRANCES

TYPICAL SECTION
 STA. 15+50 TO STA. 26+26 LEFT
 STA. 11+50 TO STA. 26+26 RIGHT

NOTE: Grade as shown is sub-grade
 Sta. 0+50 to Sta. 11+00 R+L

934 BIRCH LAKE AVE.

ESTIMATED QUANTITIES	
Excavation	Cu. Yds. 1281
Fill	" 1416
Borrow	" 480
Furnish & Install 15" C.M. Lin. Ft.	492
Remove old culv.	Lin. Ft. 516
Replace old culv.	" 24
Lower manholes	Each 6
Surfacing	Sq. Yds. 6075

EXTRA
 Furnish & Install 15" C.M. Lin. Ft. 108
 (3 - 15" X 36" C.M.s. Install as directed)

APPROVED [Signature] COUNTY SURVEYOR
 APPROVED [Signature] CHAIRMAN CITY COUNCIL

PROFILE	SUPPLIED	DATE
NOTE BOOK	ALIGNED	
BY		
DATE		