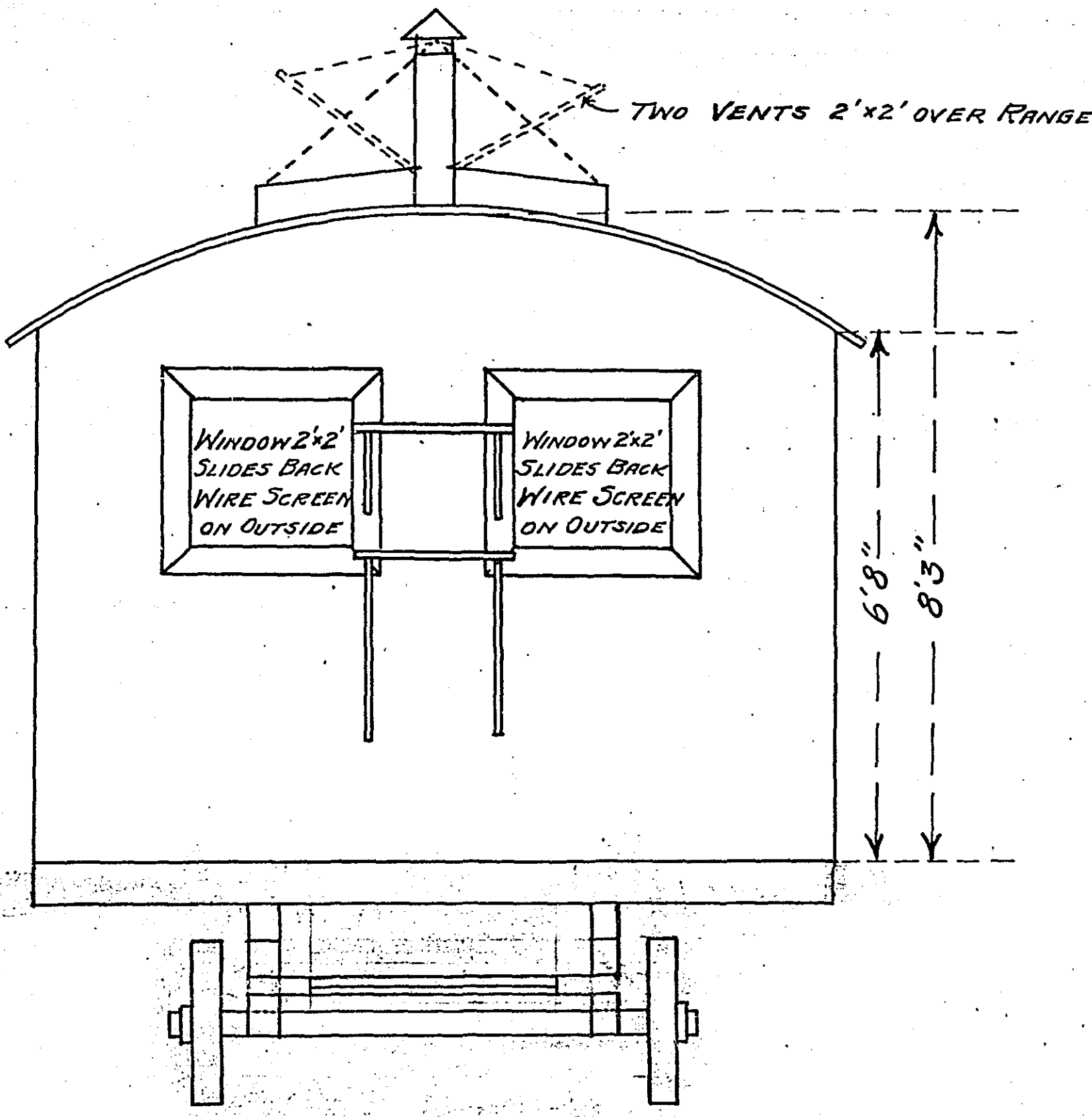


BILL OF MATERIAL

No.	SIZE	LENGTH	F.B.M.	F.B.M.	
1	1"x6"	10'	#2 Flooring	D & M	240
1	1"x6"	16'	#2 Sheathing	"	506
1	1"x6"	14'	#3	"	336
1	1"x6"	10'	#2	"	70
17	2"x4"	16'	#2	Dressed	170
32	2"x4"	12'	#2	"	256
5	4"x4"	20'	#1 FIR	"	134
5	4"x8"	10'	#1	"	134
4	6"x6"	10'	#1 FIR	"	120
					1972
TABLES, BENCHES ETC..					
8	1"x10"	10	#1	S2S	68
2	1"x12"	14	#1	"	28
3	1"x12"	10	#1	"	30
4	1"x4"	10	#1	"	14
3	1"x6"	10	#1	"	15
3	1/2"x6"	10	#1	"	15
1	2"x10"	14	#1	"	24
1	2"x10"	16	#1	"	27
					221
2	2'x2'		4 Pane Sash		
1	3'x2'		6 " "		
1	3'x5'9"		Screen Door		
1	2'x6'		"		

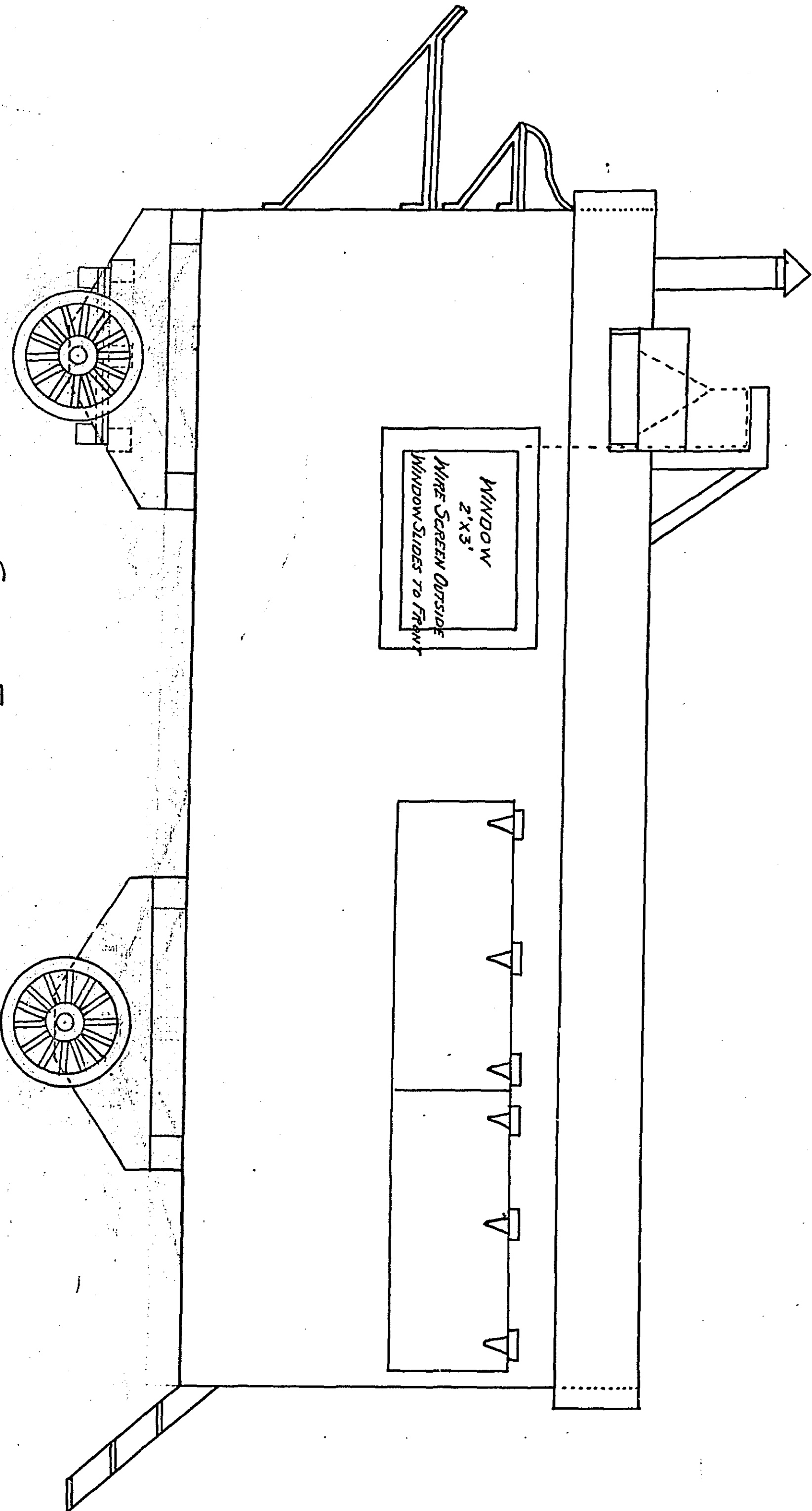
336 □ RUBBEROID ROOFING -2 PLY-



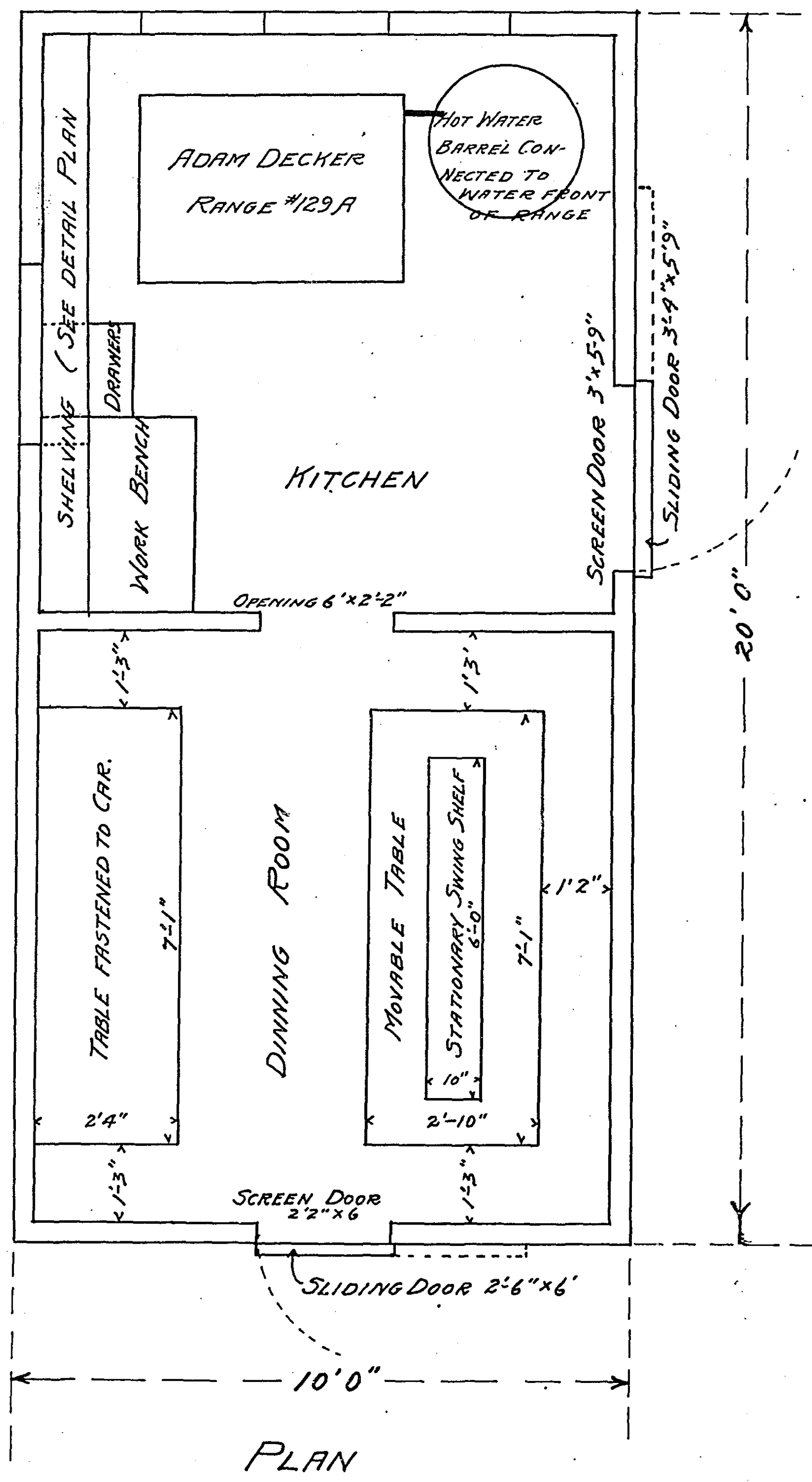
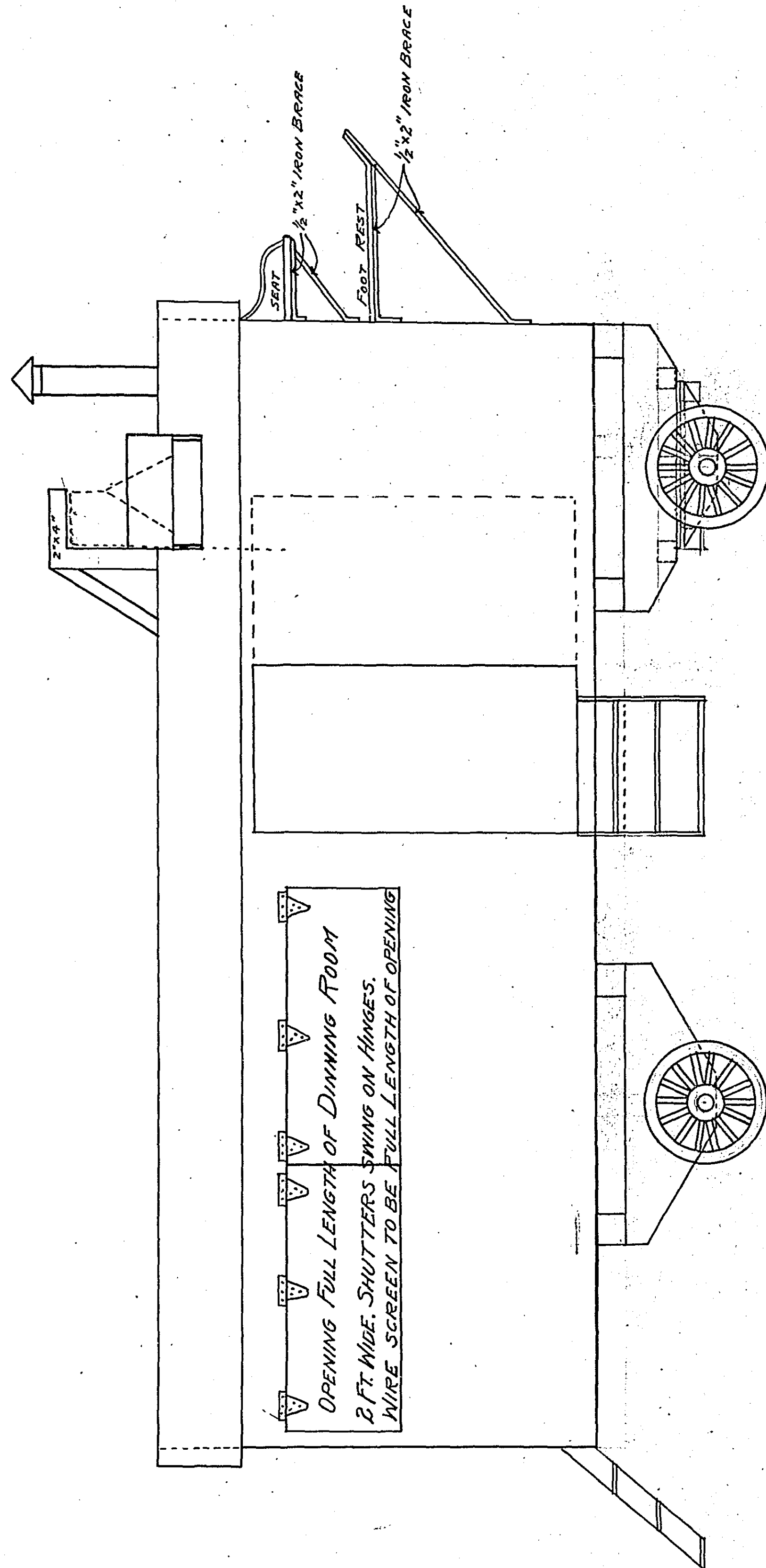
FRONT ELEVATION

Plan of Boarding Wagon.
for
RAMSEY COUNTY ROAD CREWS.
Scale 2 Feet per Inch. Jan. 1915.

SIDE ELEVATION



SIDE ELEVATION

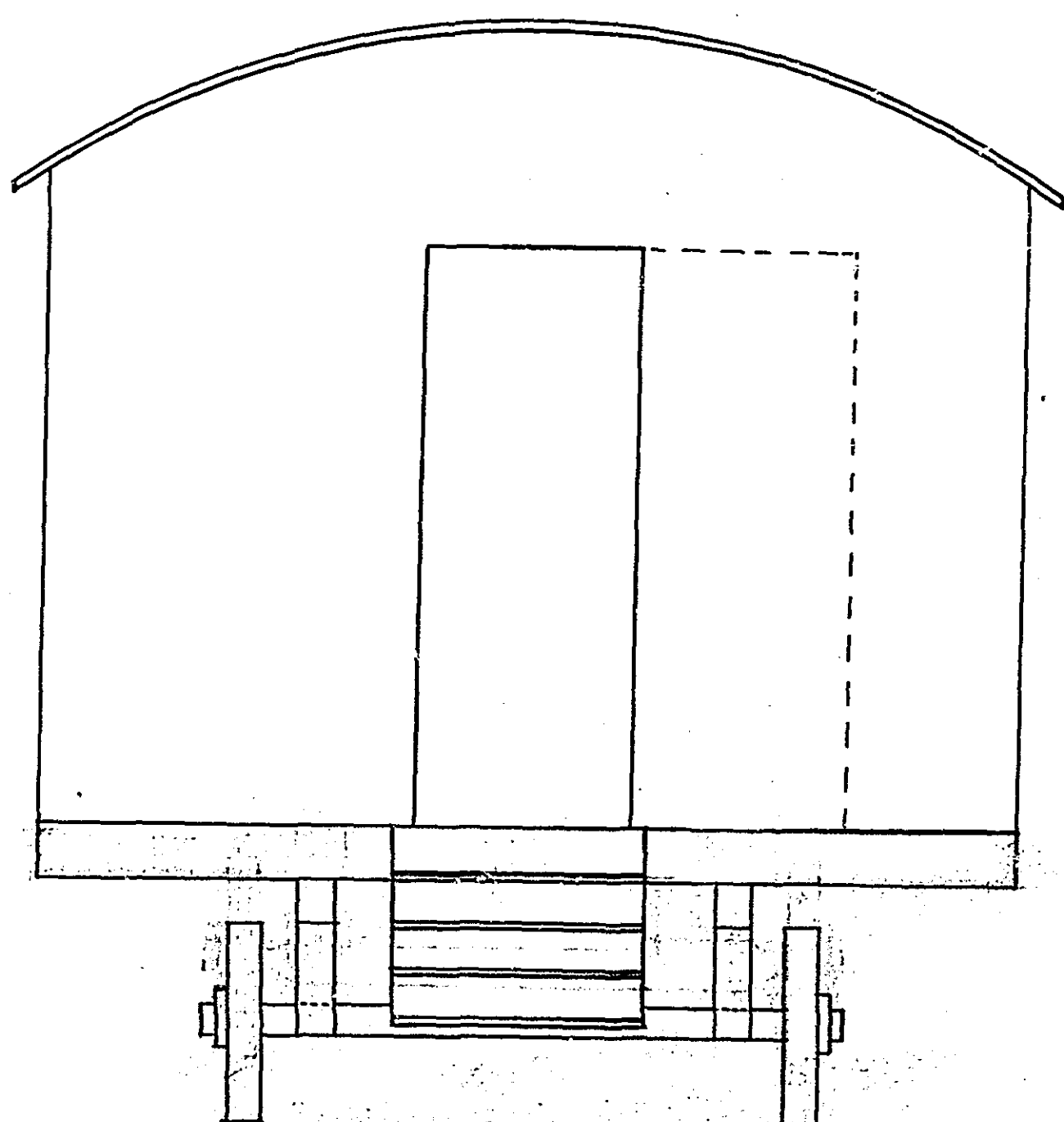


PLAN

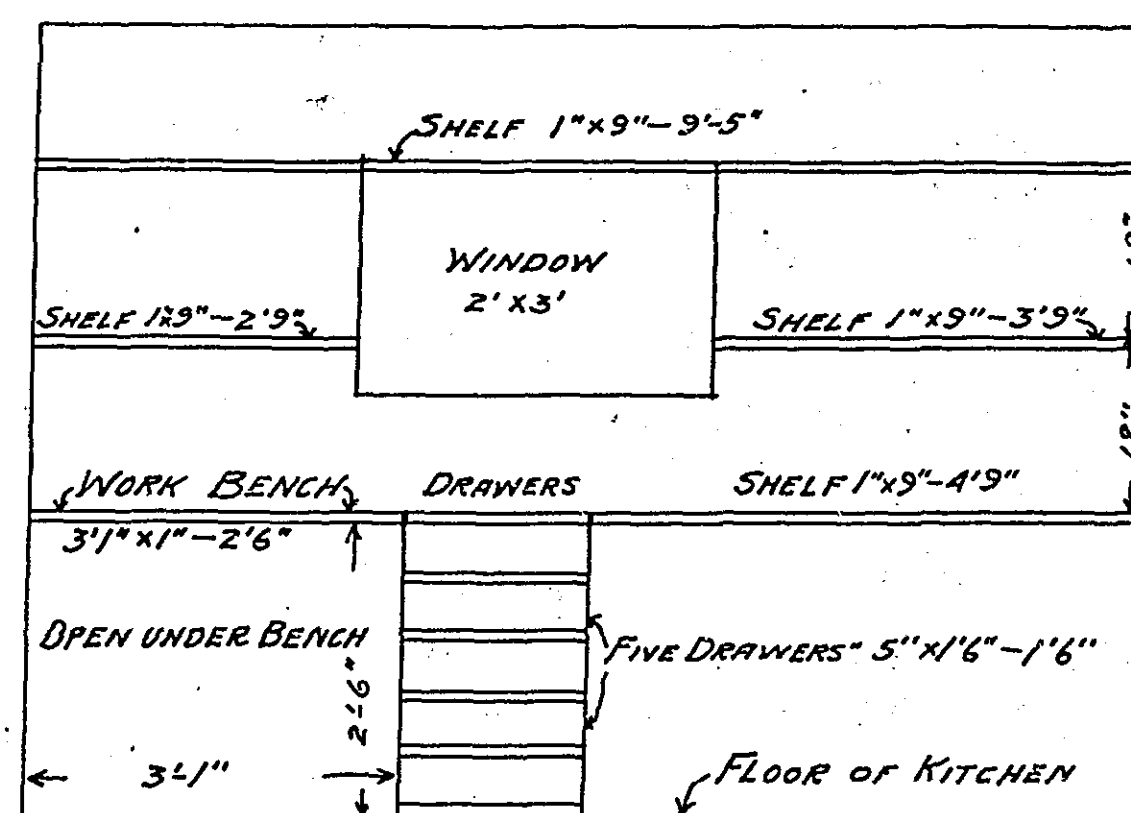
DETAILS OF CONSTRUCTION.

TRUCKS
WHEELS TO BE 24" IN DIAMETER, WITH 5'3" CENTER TO CENTER AND 4" TIRES.
AXLES TO BE 4"x4" STEEL.
TRUCKS TO BE CONSTRUCTED AFTER PLAN "B"

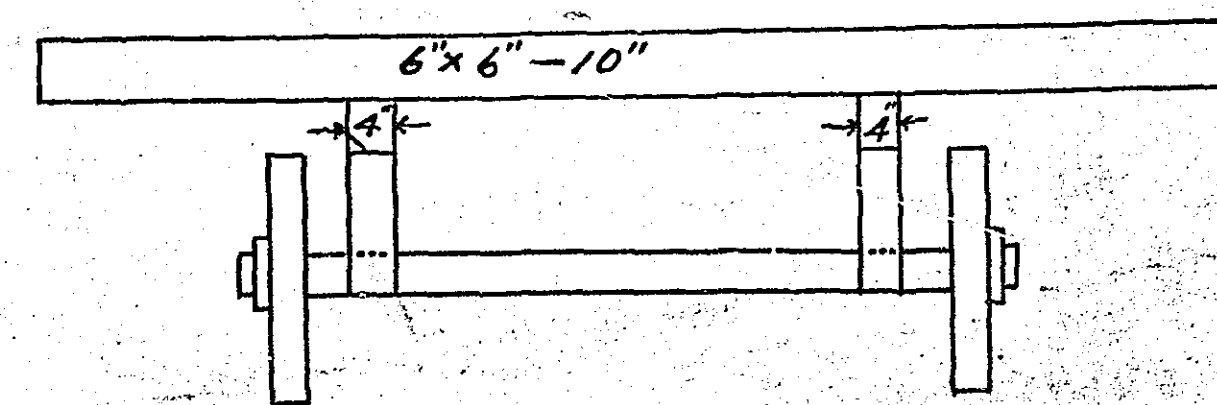
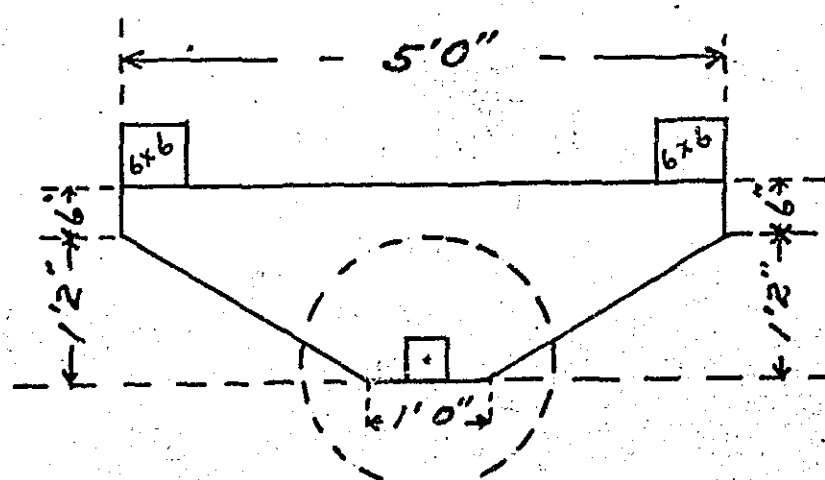
ALL WINDOWS AND VENTS TO BE COVERED WITH WIRE SCREEN
SCREEN DOORS TO BE PROVIDED FOR KITCHEN & DINNING ROOM.
2"x4" TRUSS TO BE USED ON ALL FOUR SIDES OF WAGON
STEPS TO BE DETACHABLE
SHUTTERS FOR DINNING ROOM TO SWING OUT AND PROVISION MADE FOR FASTENING FROM INSIDE.
CIRCLES TO BE 36" DIAM. 1/2"x2"



REAR ELEVATION



DETAILS OF SHELVING ETC., IN KITCHEN



TRUCK PLAN "B"

MICROFILMED
RAMSEY CO. ENGR.

1196

601