

Scale of Cross Sections
 Horizontal = 1" = 50 ft.
 Vertical = 1" = 50 ft.

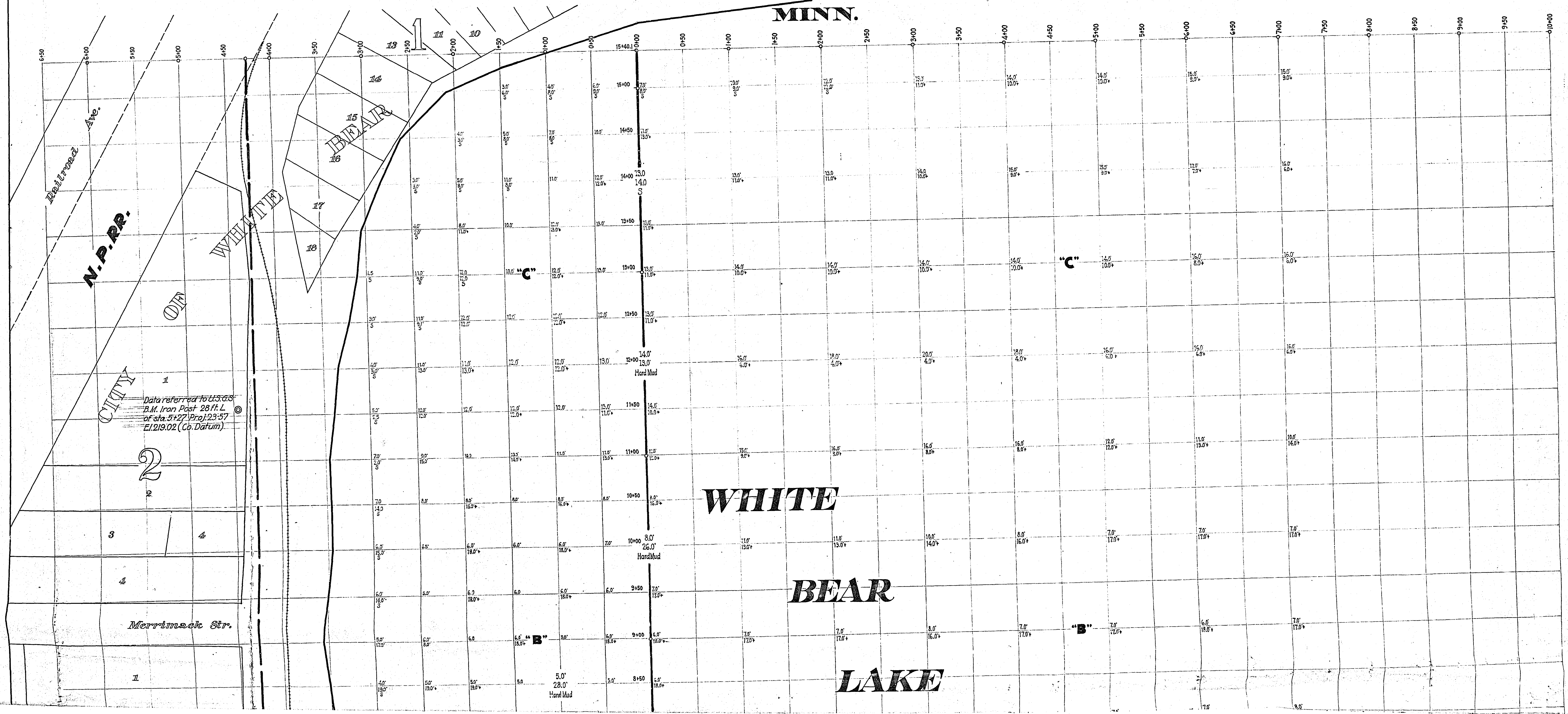
MAP OF SOUNDINGS

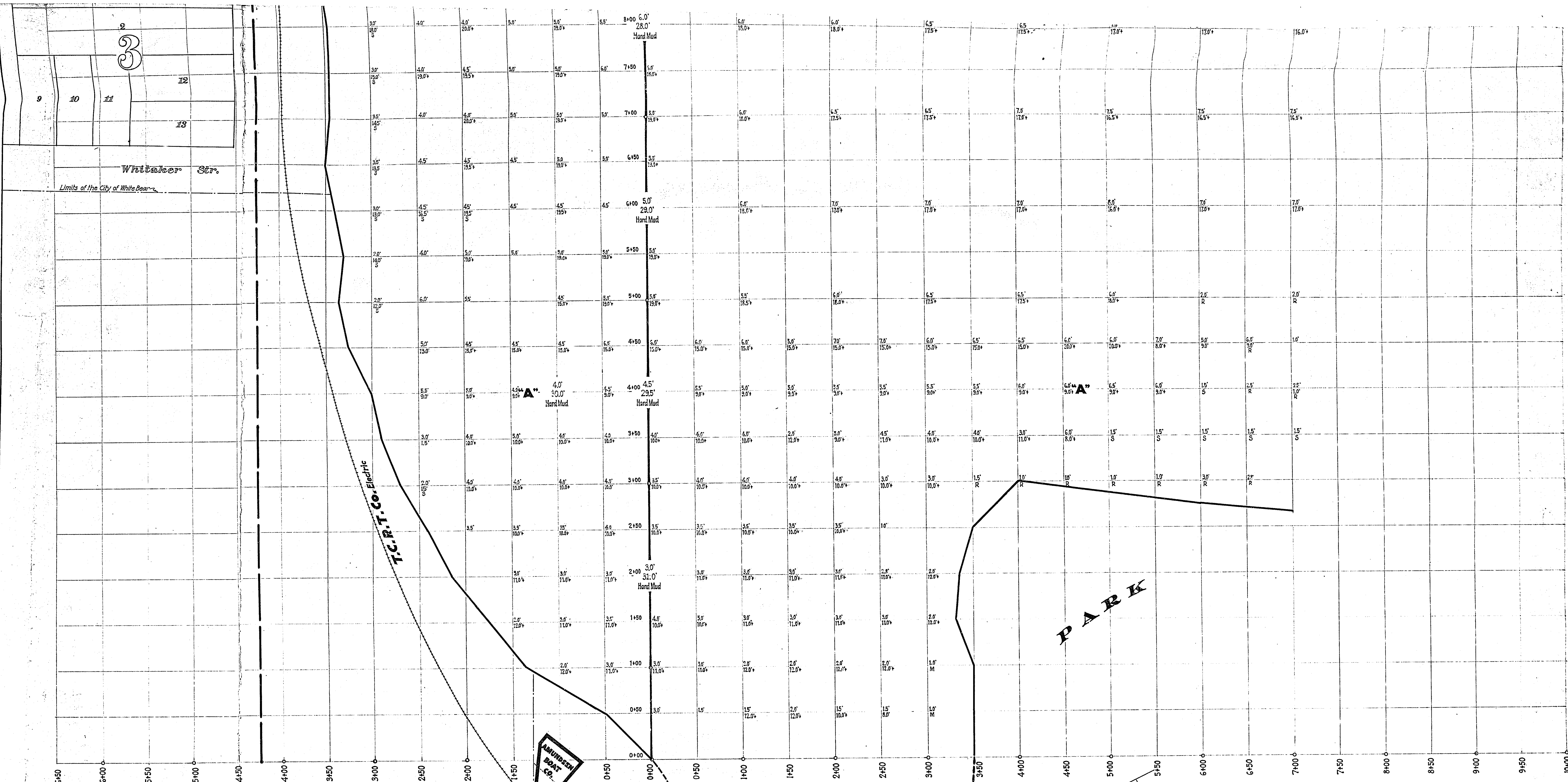
AT AUTO CLUB BEACH ~ WHITE BEAR LAKE, MINN.

OFFICE OF COUNTY ENGINEER.

RAMSEY COUNTY,

MINN.





KEY

- Figures above line indicate depth of water.
- Figures below line indicate depth of loose material on lake bed below water. The plus sign indicates a greater depth of loose material below water than was possible to reach with sounding rod used.
- All soundings taken with special sounding rod indicated thus: the first figure indicates depth of water, the second figure indicates depth of loose material over hard bottom, with description of character of hard bottom.
- S indicates the character of bottom is sand.
- R indicates rock.
- M indicates mud.
- Sub base line shown in broken red line.
- Base line shown in full red line with even stations marked by circled point.

Scale 1 inch=50 feet.

