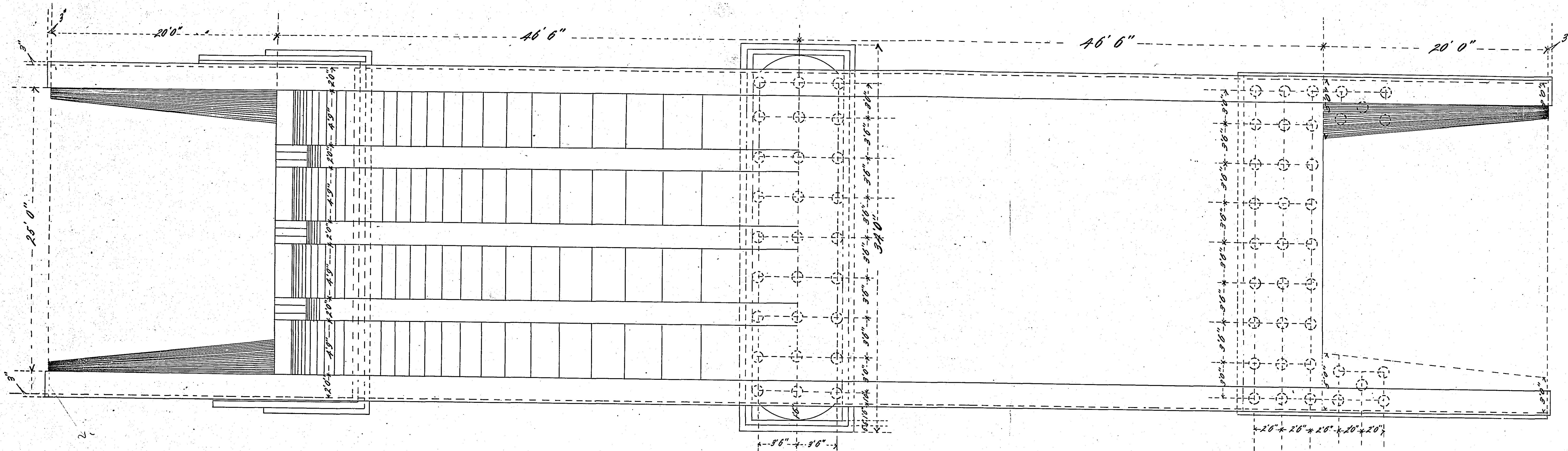


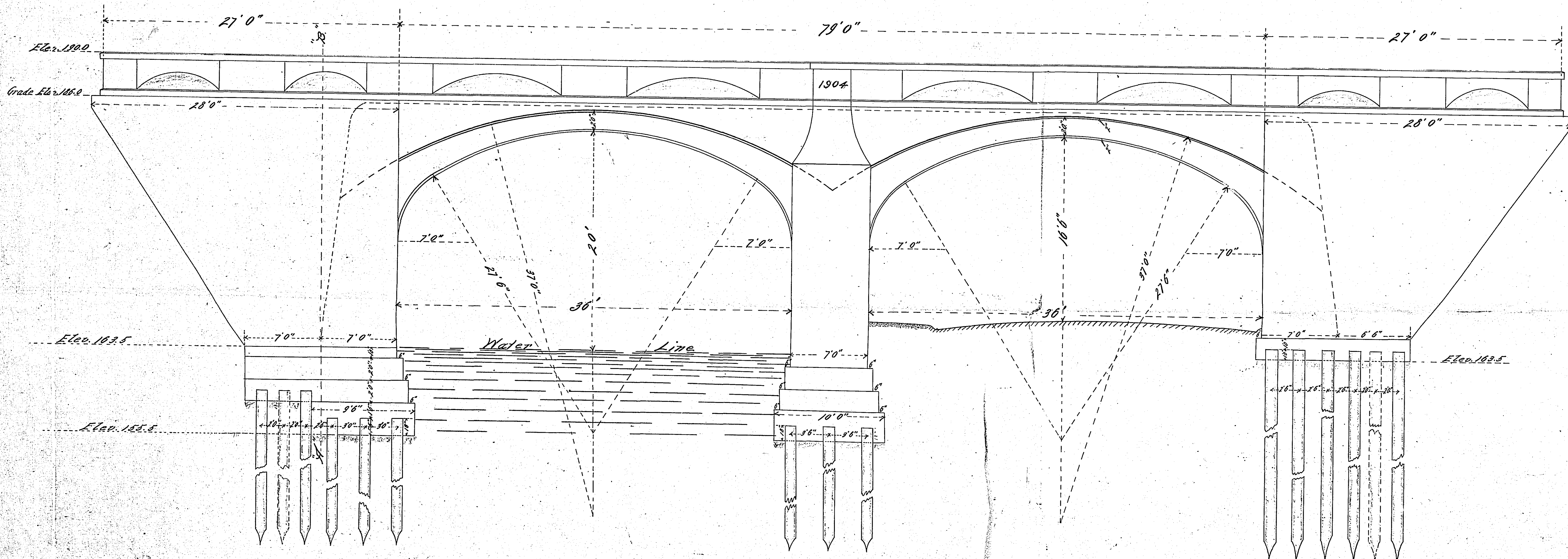
# PHALEN CREEK BRIDGE

DECEMBER 1903  
Scale 4 Feet per inch

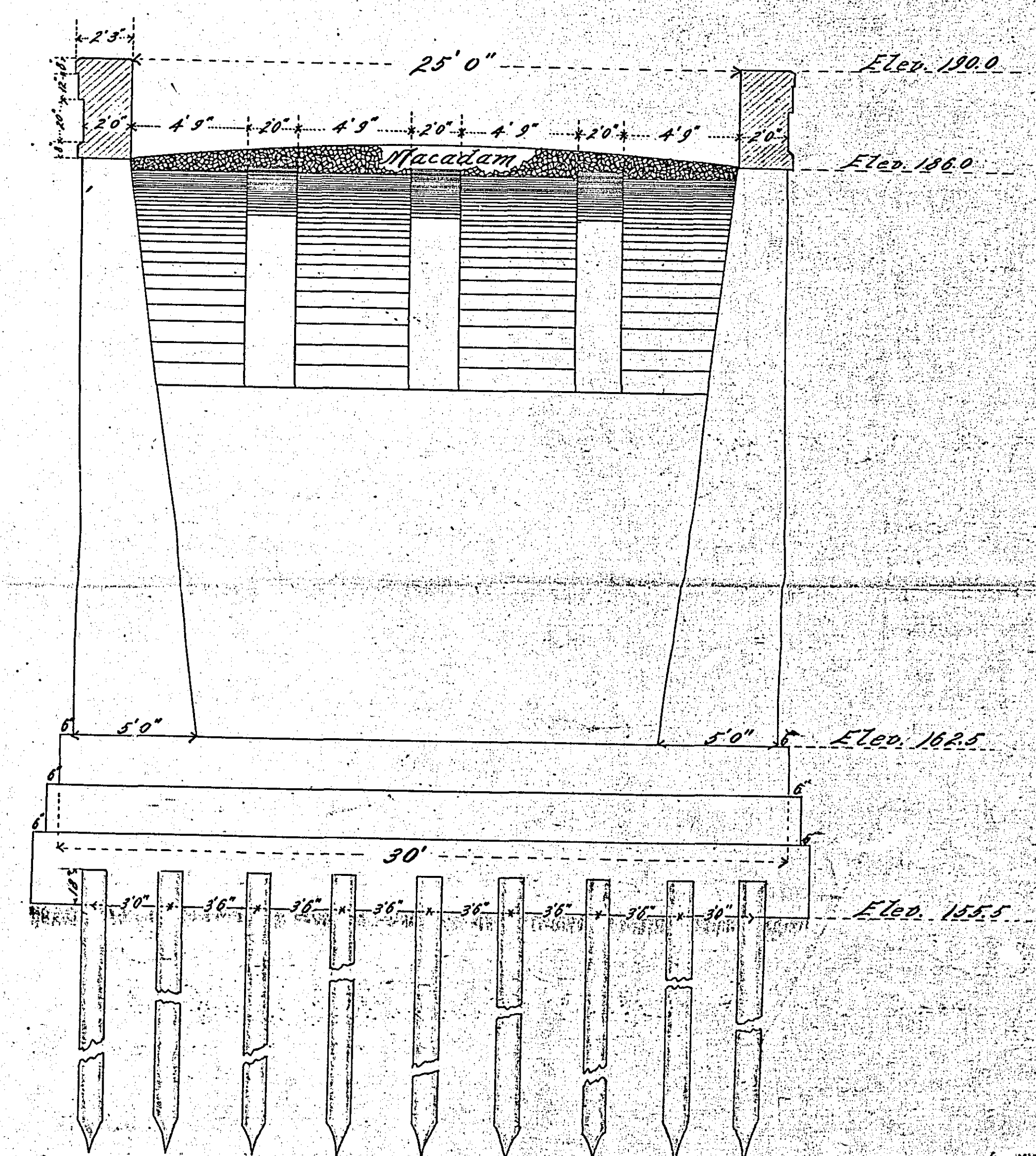
Plan



Side Elevation



End Elevation "A-B"





PHALEN CREEK BRIDGE

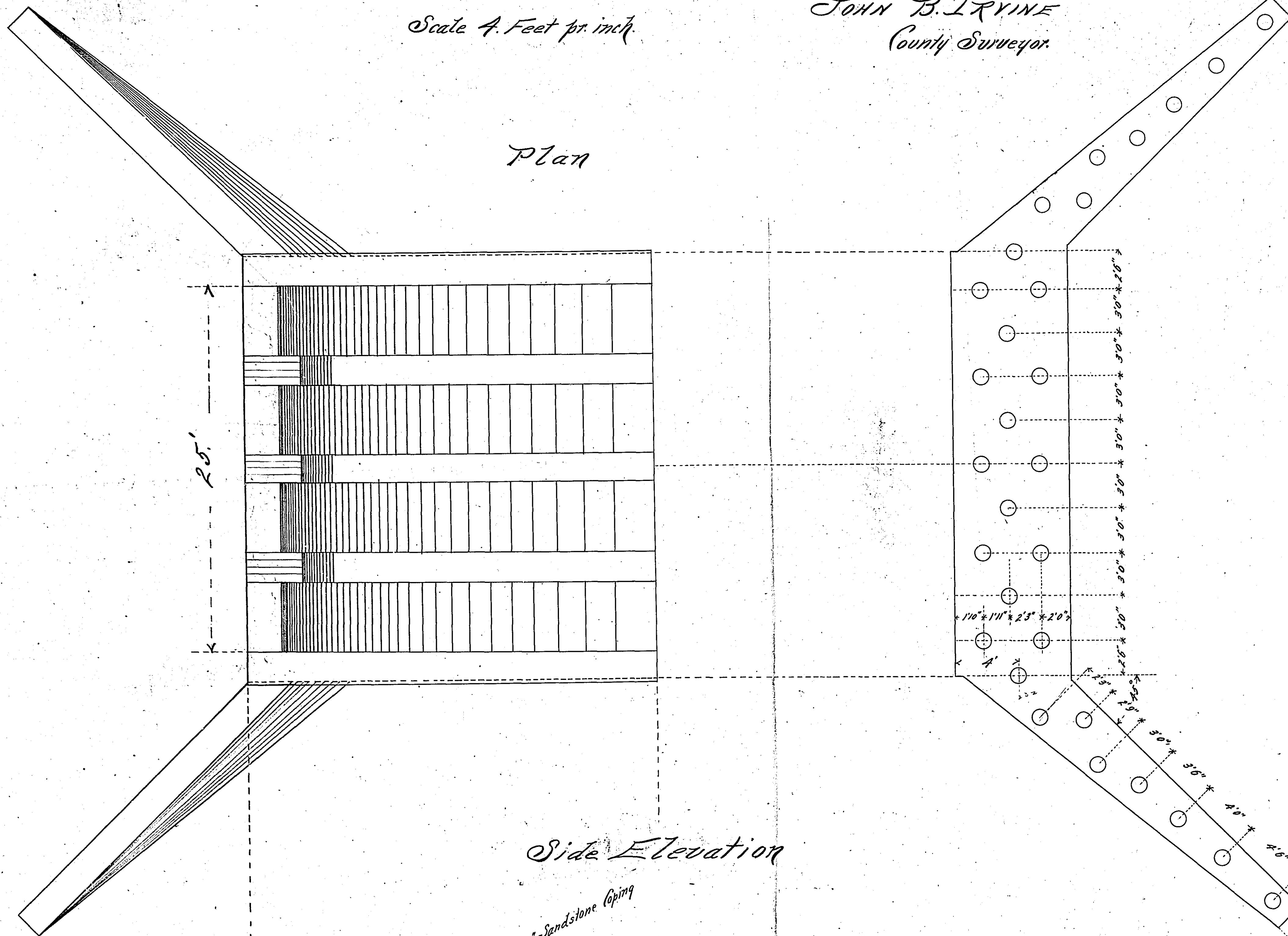
DECEMBER 1903

Scale 4 Feet per inch.

JOHN B. IRVINE  
County Surveyor.

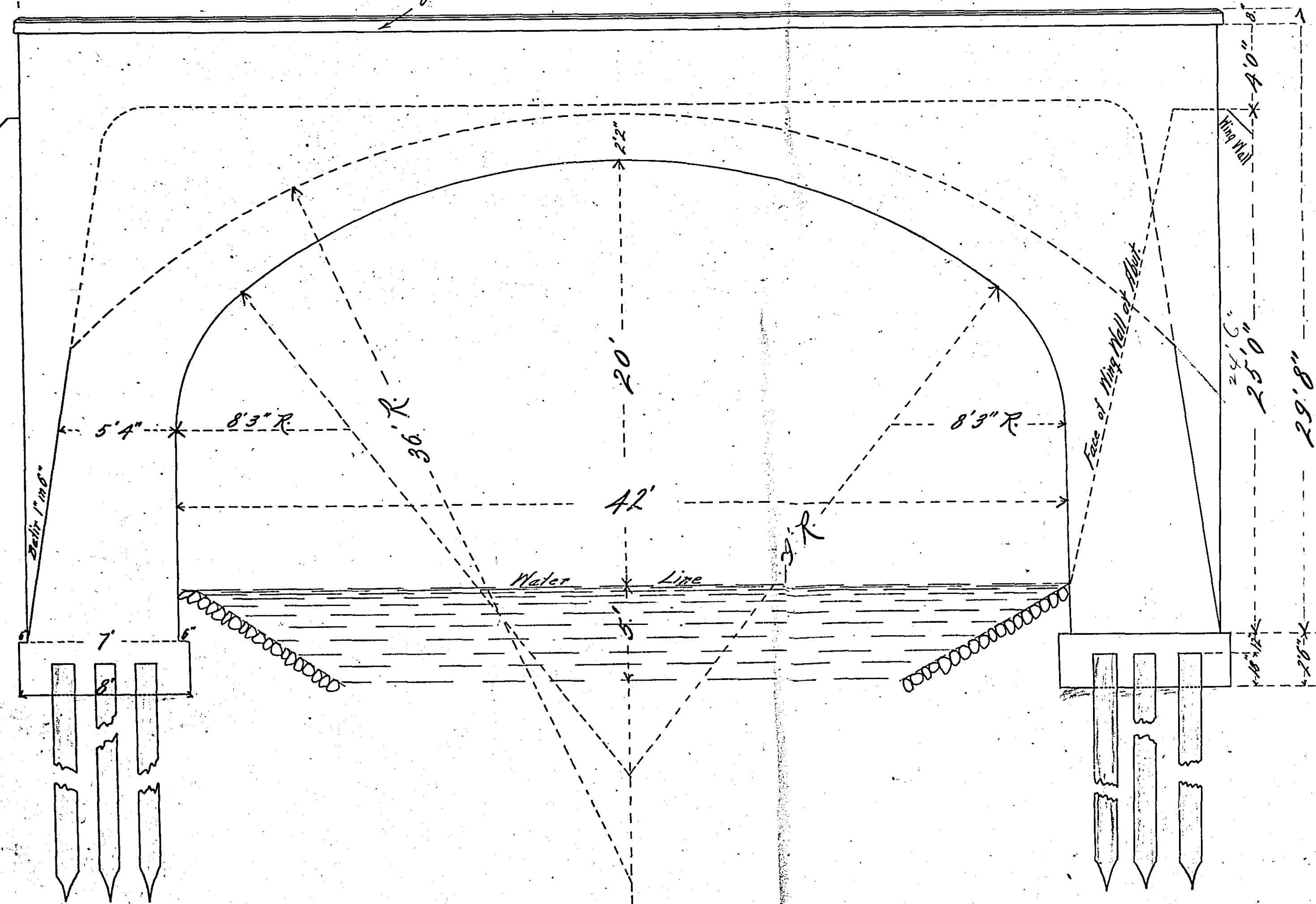
Not adopted

Plan



Side Elevation

8" Sandstone coping



End Elevation

