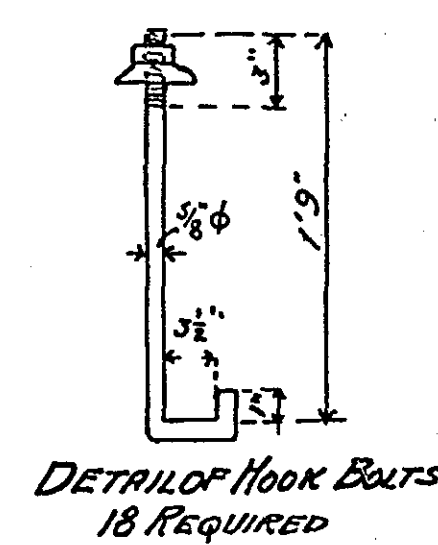
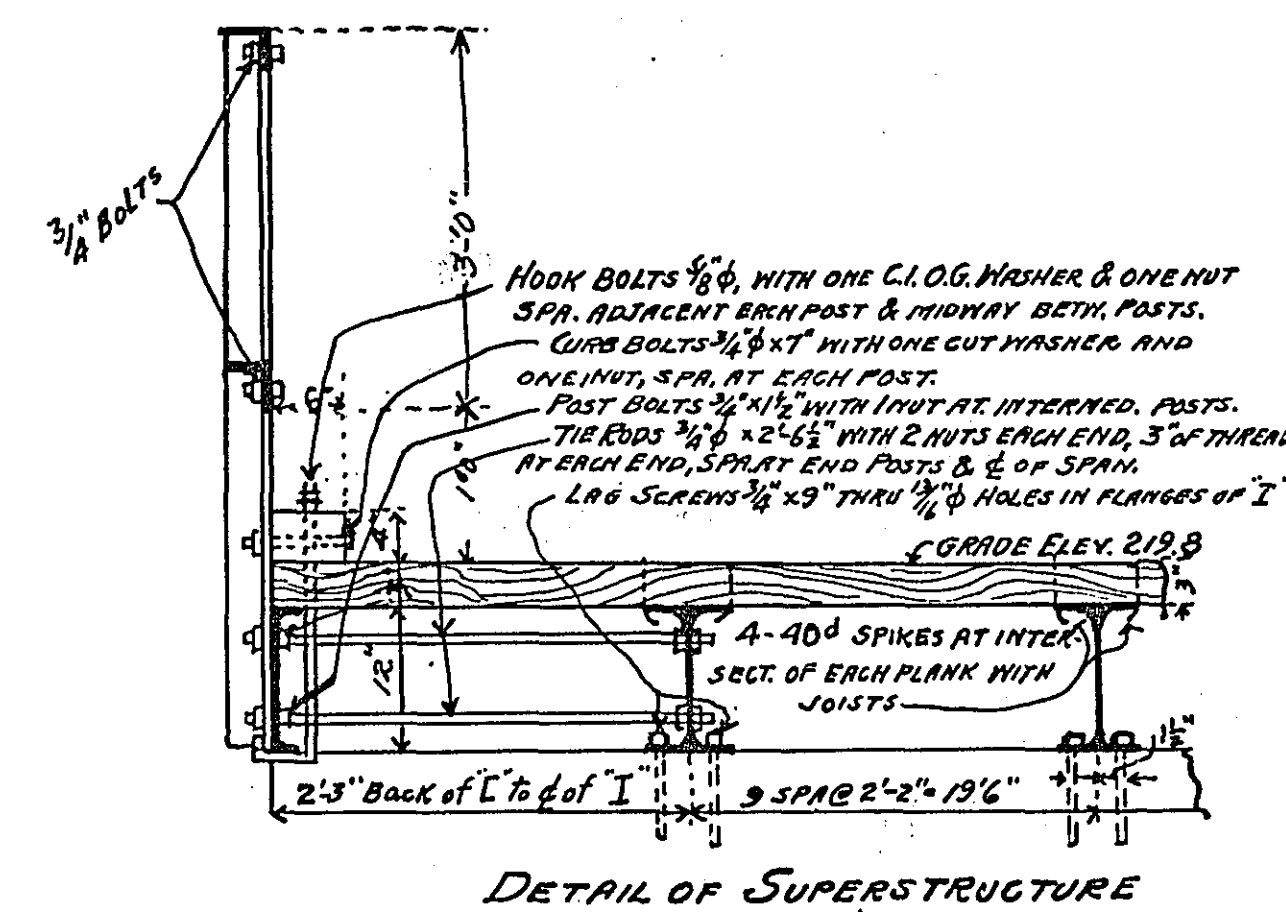
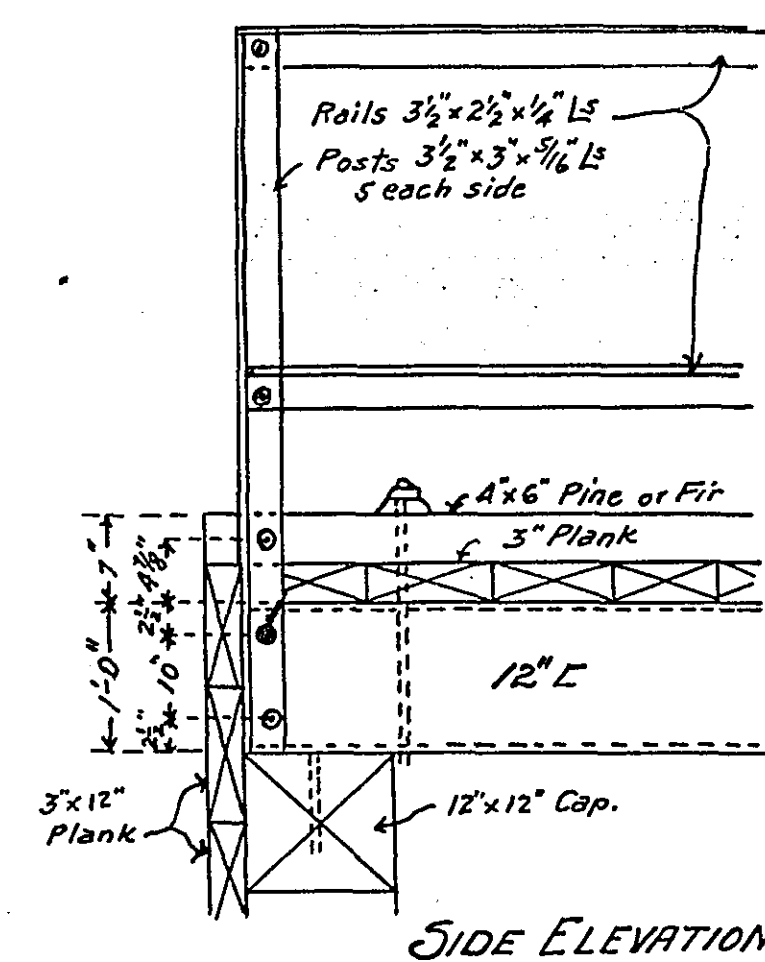
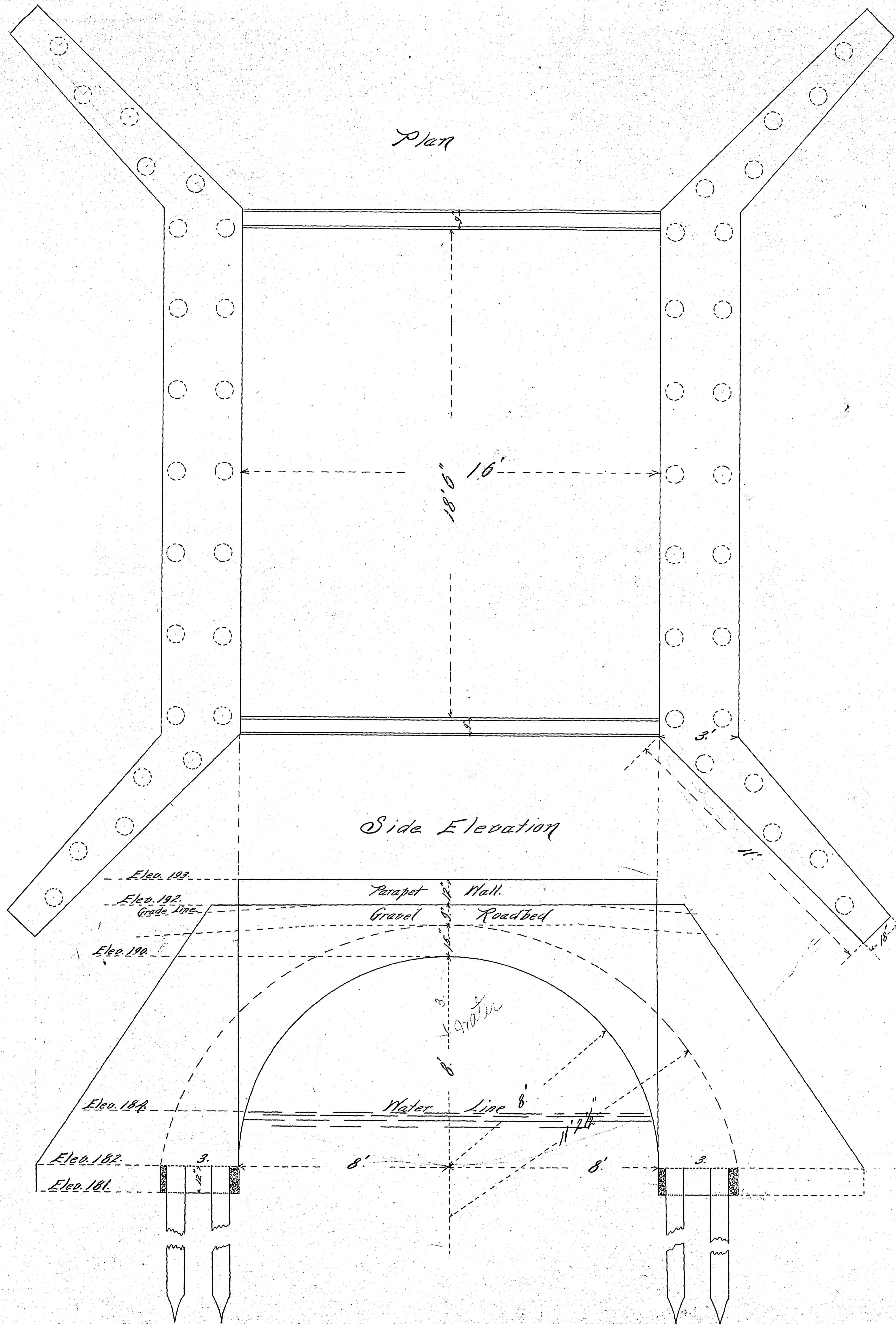


SPAN 32'0" E. TO E.
CLEAR SPAN 30'0"
JOIST 2-12" E 10-12" I's
FLOOR 3" CREOSOTED PLANK
GUARD RAIL 4"x6"
RAILING 2 E 3 1/2"x2 1/2"x1/4" LATTICE 1 1/2"x1/4" POSTS L 3 1/2"x3 1/4"
PILE CAPS 12"x12"-26'-0"
BACKING PLANK 2" - TO EXTEND 3' BELOW BED OF CREEK.



PLAN FOR BRIDGE ON BALD EAGLE LAKE AVE BOULEVARD,
OVER CLEARWATER CREEK
AT OUTLET OF BALD EAGLE LAKE
In Washington Co.



RICE CREEK BRIDGE
ON HAMLINE AVE.

Scale 2. Feet per inch
JULY 1904
JOHN B. IRVINE County Surveyor

