

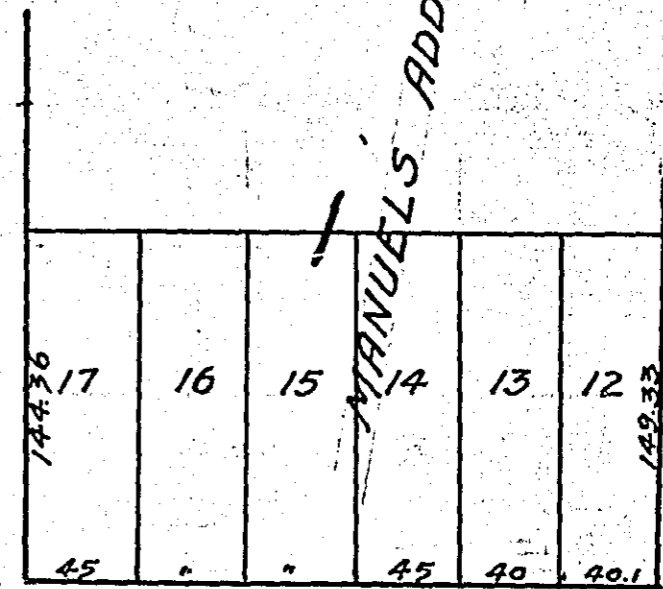
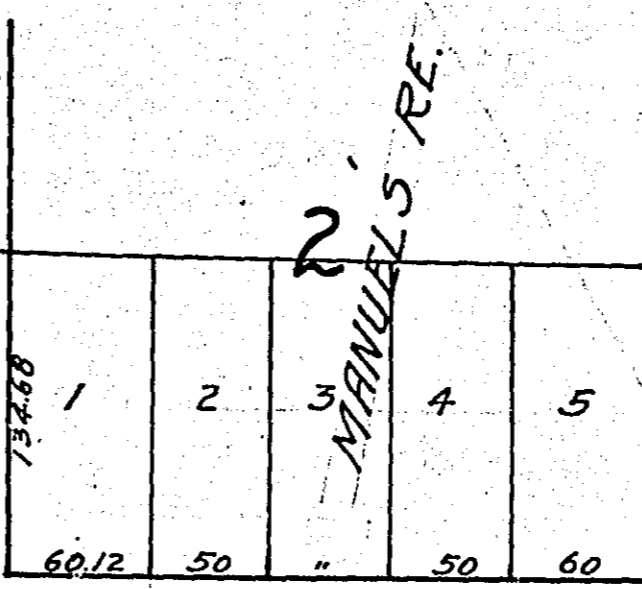
125

125

JOHN FLANNIGAN

MONT. SW. COR. SEC. 17, T. 29, R. 27

BARRETT &
ZIMMERMAN



HENNEPIN COUNTY
RAMSEY COUNTY

MINN. BELT LINE RY

OLD (VACATED)

850.

LOCATION

Scale 100' = 1 inch

1320.4

LARPEN TEUR

188

AVE

EUSTIS ST.

MICROFILMED
RAMSEY CO. ENGR

1176