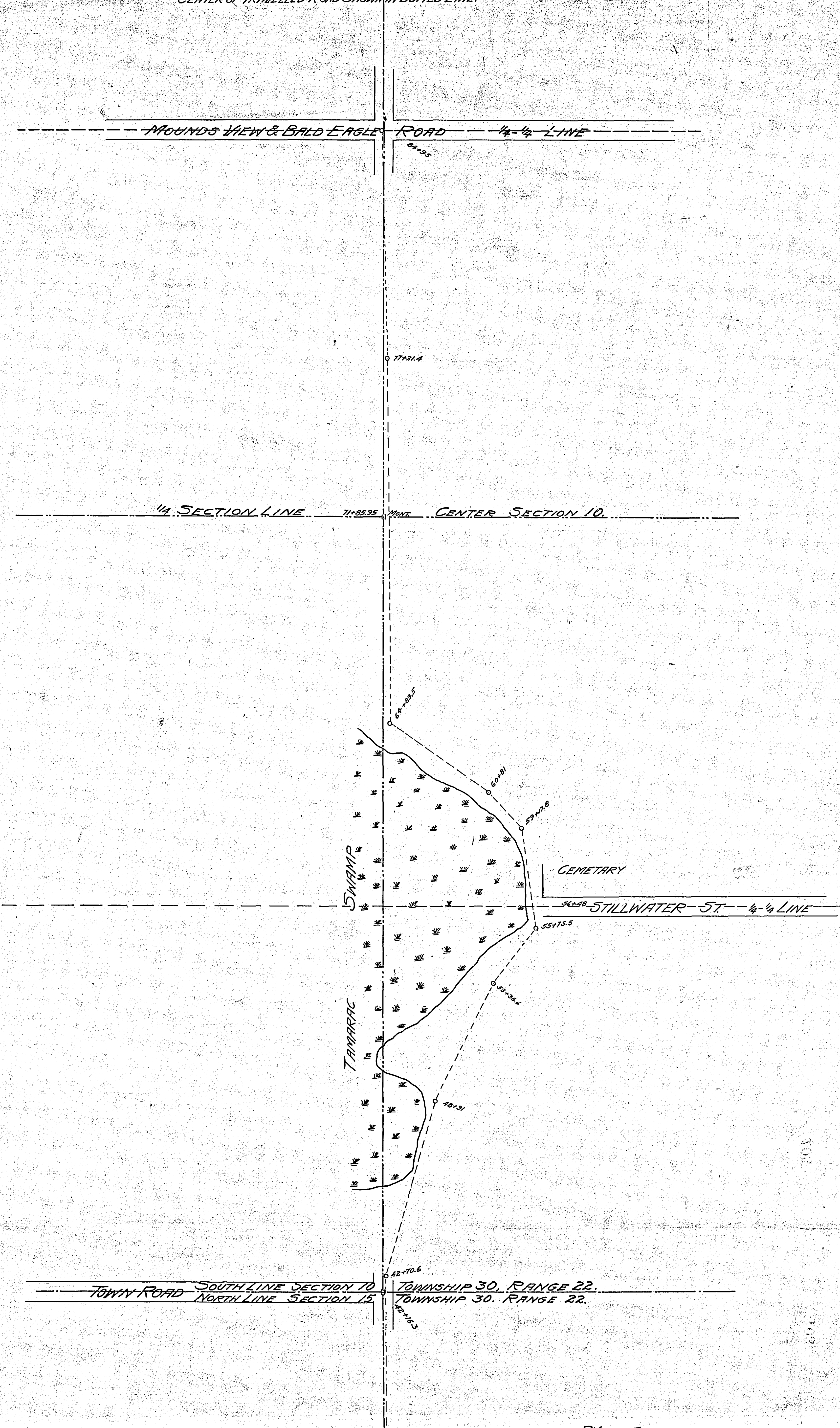


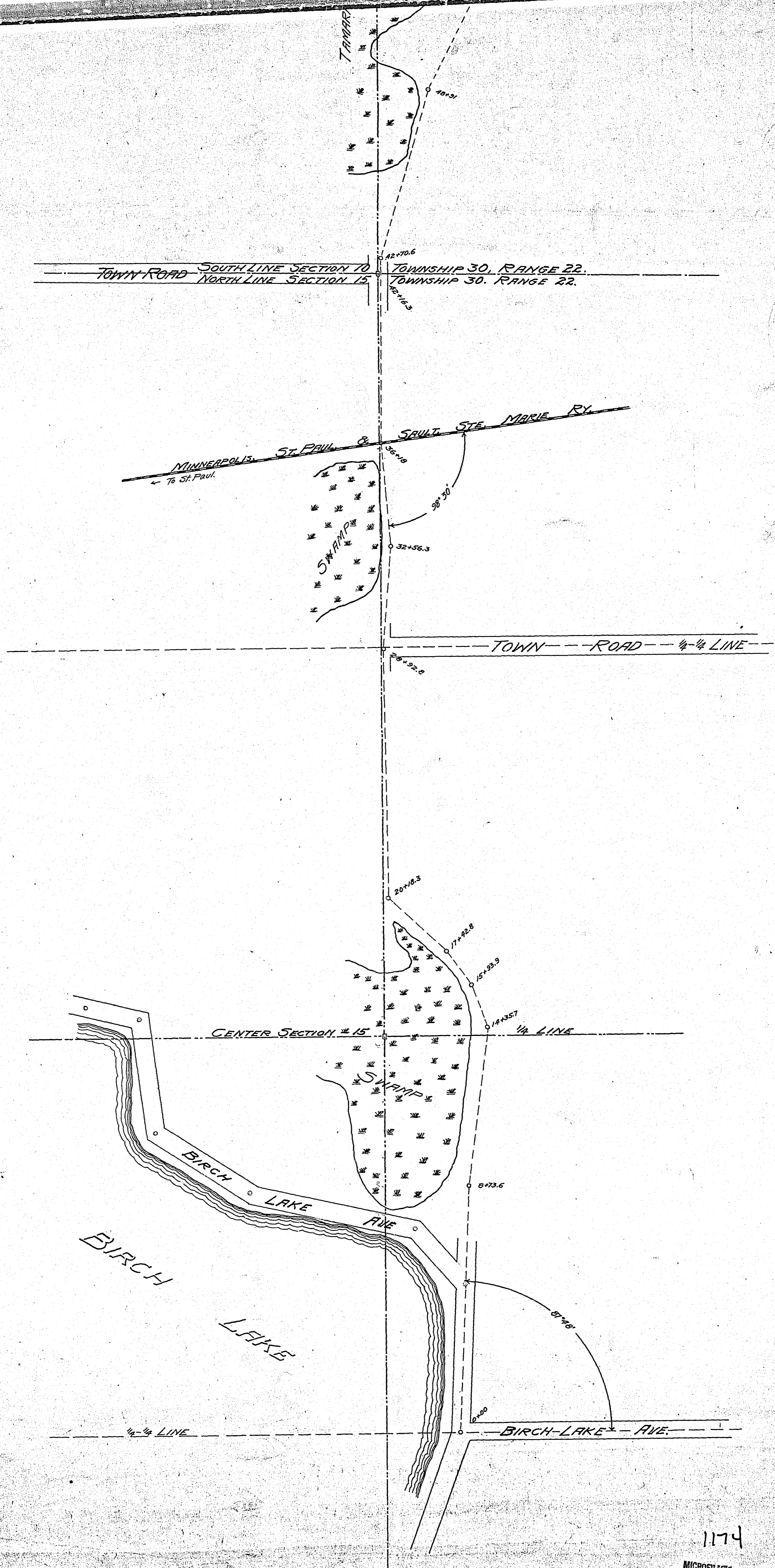
MAP SHOWING
LOCATION OF TRAVELLED ROAD
OTTER LAKE ROAD.

THROUGH SECTIONS 10 & 15, T. 30 N., R. 22 W.
Scale 200 ft. per Inch. Oct. 1909.

J. H. ARMSTRONG,
COUNTY SURVEYOR.

NOTE:
CENTER OF TRAVELLED ROAD SHOWN IN DOTTED LINE.





1174

MICROFILMED
RAMSEY CO. ENGR.