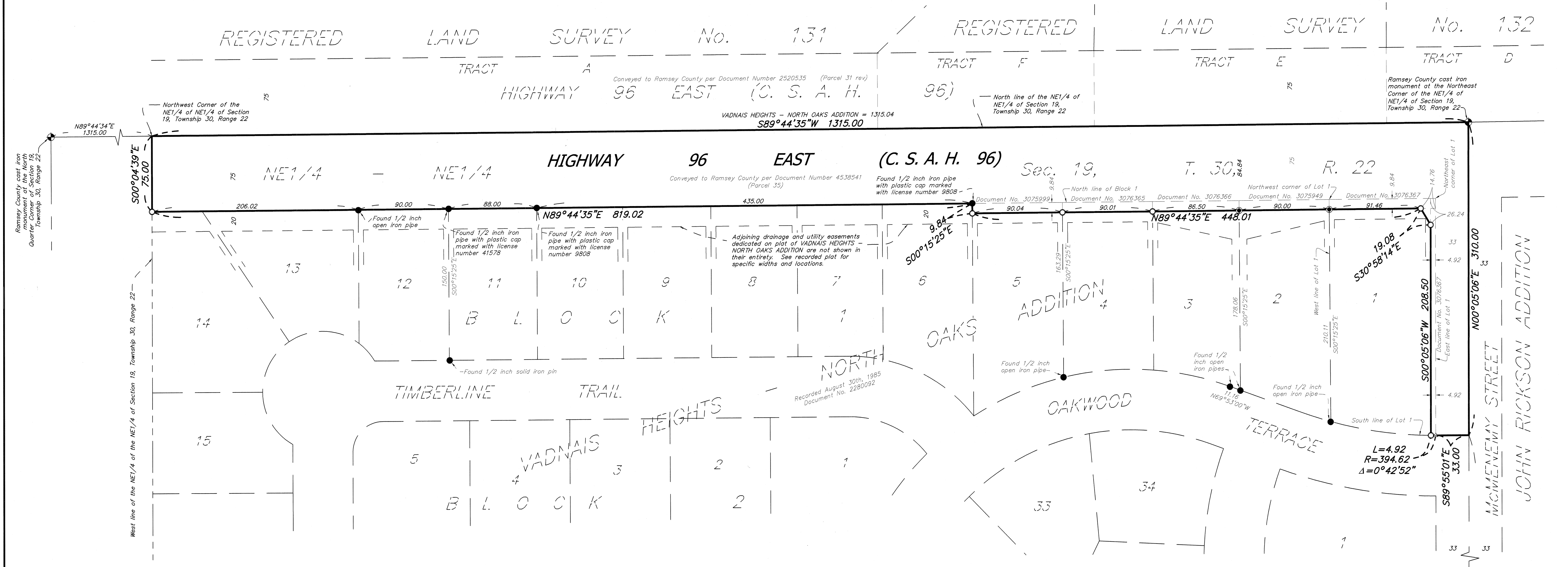


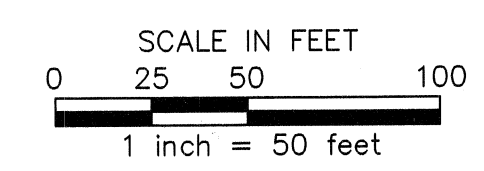
# RAMSEY COUNTY HIGHWAY RIGHT OF WAY PLAT NO. 8 - C.S.A.H. 96 ~ HIGHWAY 96 EAST

REGISTERED LAND SURVEY No. 131 REGISTERED LAND SURVEY No. 132  
TRACT A TRACT F TRACT E TRACT D

Ram  
Co  
ROW  
8



For the purposes of this plat, the north line of the NE1/4 of the NE1/4 of Section 19, Township 30, Range 22 is assumed to bear S89°44'35"W.



### NOTES

The bearings and distances shown on this plat are based on the Ramsey County Coordinate System NAD83 (1986).  
For details concerning this plat contact the Ramsey County Surveyors Office.

### LEGEND

- Denotes a 5/8 inch by 14 inch iron rod with an aluminum cap inscribed "Ramsey County R/W - LS 45816"
- Denotes a 5/8 inch by 14 inch iron rod with a plastic cap inscribed "Ramsey County - L.S. 45816"
- △ Denotes a P.K nail with a washer stamped "Ramsey County - LS 45816"
- Denotes found monument (size, type and Land Surveyor identification described on graphics).
- ⊕ Denotes Ramsey County cast iron monument.

Pursuant to Resolution No. B2015-096 of the Board of Commissioners for Ramsey County, Minnesota, and Minnesota Statutes, Section 160.14, Subdivision 1, I hereby certify that this plat is adopted for the establishment of existing highway right-of-way, and that this is the official plat of that portion of County State Aid Highway 96 as shown hereon being located within Section 19, Township 30 North, Range 22 West of Ramsey County.

*[Signature]*  
James E. Tolaas, PE  
Ramsey County Public Works Director / County Engineer  
Minnesota License No. 16159

Date: 4/22/15

I hereby certify that this plat was prepared by me or under my direct supervision and that I am a duly Licensed Land Surveyor under the laws of the State of Minnesota; that this plat meets the requirements of Minnesota Statutes, Chapter 160.14, Subdivision 1; that all monuments shown on the plat have been correctly placed in the ground; that all measurements are correctly shown on this plat; and that all right of way boundary lines are correctly designated on this plat.

*[Signature]*  
Daniel D. Baas, L.S.  
Deputy Ramsey County Surveyor  
Minnesota License No. 45816

Date: April 28, 2015

County Recorder, County of Ramsey, State of Minnesota

I hereby certify that this plat of RAMSEY COUNTY HIGHWAY RIGHT OF WAY PLAT NO. 8 - C.S.A.H. 96 - HIGHWAY 96 EAST was filed in the office of the County Recorder for public record on this 28 day of April, 2015, at 12 o'clock P.M. as Document Number 4555058

*[Signature]*  
Deputy County Recorder