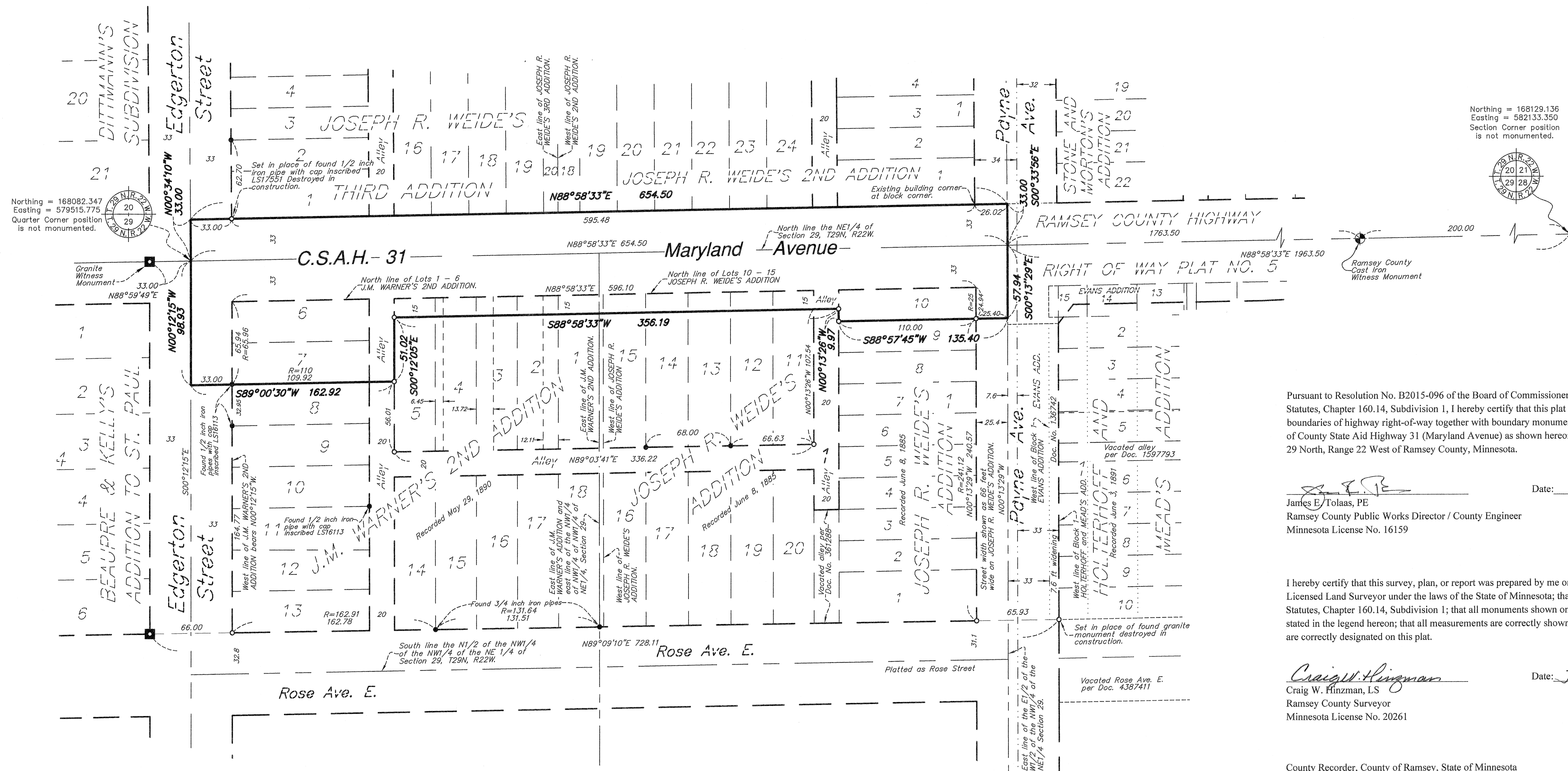


# RAMSEY COUNTY HIGHWAY RIGHT OF WAY PLAT NO. 6 - C.S.A.H. 31 - MARYLAND AVENUE



Northing = 168082.347  
Easting = 579515.775  
Quarter Corner position is not monumented.

Northing = 168129.136  
Easting = 582133.350  
Section Corner position is not monumented.

### NOTES

Parcel boundaries shown hereon have been determined from Ramsey County and the City of Saint Paul survey records, descriptions recited on recorded or filed documents, subdivision plat computations and analysis, and field verification of existing survey monuments. Parcel reports dated October 2, 2012 were obtained from LAND TITLE, INC. and used in analysis.

The basis of bearings shown on this plat is the Ramsey County Coordinate System NAD83 (1986) where the north line of the Northeast Quarter of Section 29, T29N, R22W bears N 88° 58' 33" E.

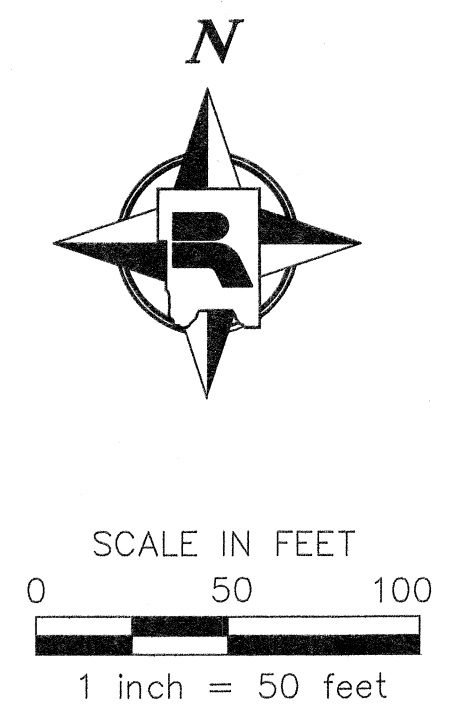
Right angle widths shown on adjoining public ways hereon are either record dimensions as shown on adjoining subdivision plats, or measured values where there are significant differences.

For locations, coordinates and any replacement information for found survey monuments not shown on this plat see the MONUMENT REPLACEMENT EXHIBIT on file in the Ramsey County Surveyors Office.

For other details concerning this plat contact the Ramsey County Surveyors Office. Project No. 2015-014.

### LEGEND

- Denotes a set right of way boundary monument consisting of a 5/8 inch by 14 inch solid iron rod with an aluminum cap inscribed "Ramsey County R/W - LS 20261". If physical conditions following construction prohibit setting an iron rod a survey nail with disk inscribed "RAMSEY COUNTY - LS 20261" will be substituted.
- Denotes a set solid 5/8 inch by 14 inch iron rod with a plastic cap inscribed "RAMSEY COUNTY - LS 20261".
- Denotes a found 1/2 inch iron pipe monument with no cap unless otherwise noted.
- Denotes a found 8 inch square cut granite monument.
- ⊕ Denotes a cast iron monument with 4 inch round top inscribed RAMSEY COUNTY.
- R= Denotes record dimensional values as shown on the applicable adjacent subdivision plat.



Pursuant to Resolution No. B2015-096 of the Board of Commissioners for Ramsey County, Minnesota, and Minnesota Statutes, Chapter 160.14, Subdivision 1, I hereby certify that this plat is adopted to facilitate the establishment of the boundaries of highway right-of-way together with boundary monumentation, and that this is the official plat of that portion of County State Aid Highway 31 (Maryland Avenue) as shown hereon being located within Sections 20 and 29, Township 29 North, Range 22 West of Ramsey County, Minnesota.

*James E. Tolaas*  
James E. Tolaas, PE  
Ramsey County Public Works Director / County Engineer  
Minnesota License No. 16159

Date: 6/22/15

I hereby certify that this survey, plan, or report was prepared by me or under my direct supervision and that I am a duly Licensed Land Surveyor under the laws of the State of Minnesota; that this plat meets the requirements of Minnesota Statutes, Chapter 160.14, Subdivision 1; that all monuments shown on this plat have been correctly placed in the ground as stated in the legend hereon; that all measurements are correctly shown on this plat; and that all right of way boundary lines are correctly designated on this plat.

*Craig W. Hinzman*  
Craig W. Hinzman, LS  
Ramsey County Surveyor  
Minnesota License No. 20261

Date: June 22, 2015

County Recorder, County of Ramsey, State of Minnesota  
I hereby certify that this plat of RAMSEY COUNTY HIGHWAY RIGHT OF WAY PLAT NO. 6 - C.S.A.H. 31 - MARYLAND AVENUE was filed in the office of the County Recorder for public record on this 22<sup>nd</sup> day of June, 2015, at 4 o'clock P. M. as Document Number 4563704.

*Deputy County Recorder*  
Deputy County Recorder

Registrar of Titles, County of Ramsey, State of Minnesota *H/A*  
I hereby certify that this plat of RAMSEY COUNTY HIGHWAY RIGHT OF WAY PLAT NO. 6 - C.S.A.H. 31 - MARYLAND AVENUE was filed in the office of the Registrar of Titles for public record on this \_\_\_ day of \_\_\_, 20\_\_\_, at \_\_\_ o'clock \_\_\_ M. as Document Number \_\_\_\_\_.

Deputy Registrar of Titles