

# RAMSEY COUNTY HIGHWAY RIGHT OF WAY PLAT NO. 5 - C.S.A.H. 31 - MARYLAND AVE.

## NOTES

Parcel boundaries and corresponding parcel areas shown hereon have been determined from Ramsey County and the City of Saint Paul survey records, descriptions recited or recorded or filed documents, subdivision plat computations and analysis, and field verification of existing survey monuments.

The listing of recorded owners in the parcel table was created from Certificates of Title and other documents of record provided in the form of a "Property Report" by Land Title Inc. with a "Posted Effective Date" of August 31, 2012.

The basis of bearings shown on this plat is the Ramsey County Coordinate System NAD83 (1986) where the north line of the Northeast Quarter of Section 29, T29N, R22W bears N 88° 58' 33" E.

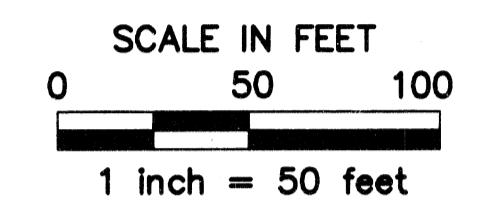
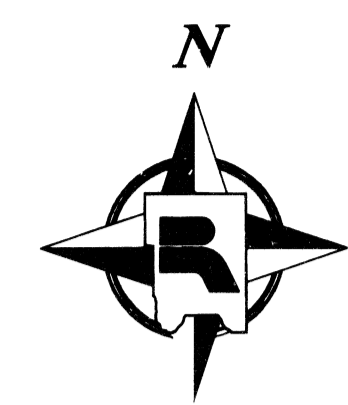
Right angle widths shown on adjoining public ways hereon are either record dimensions as shown on adjoining subdivision plats, or measured values where there are significant differences.

The north 25 feet of Lots 13 - 15, Block 1, EVANS ADDITION, was not included in, or a part of the recorded plat of HOLTERHOFF AND MEAD'S ADDITION.

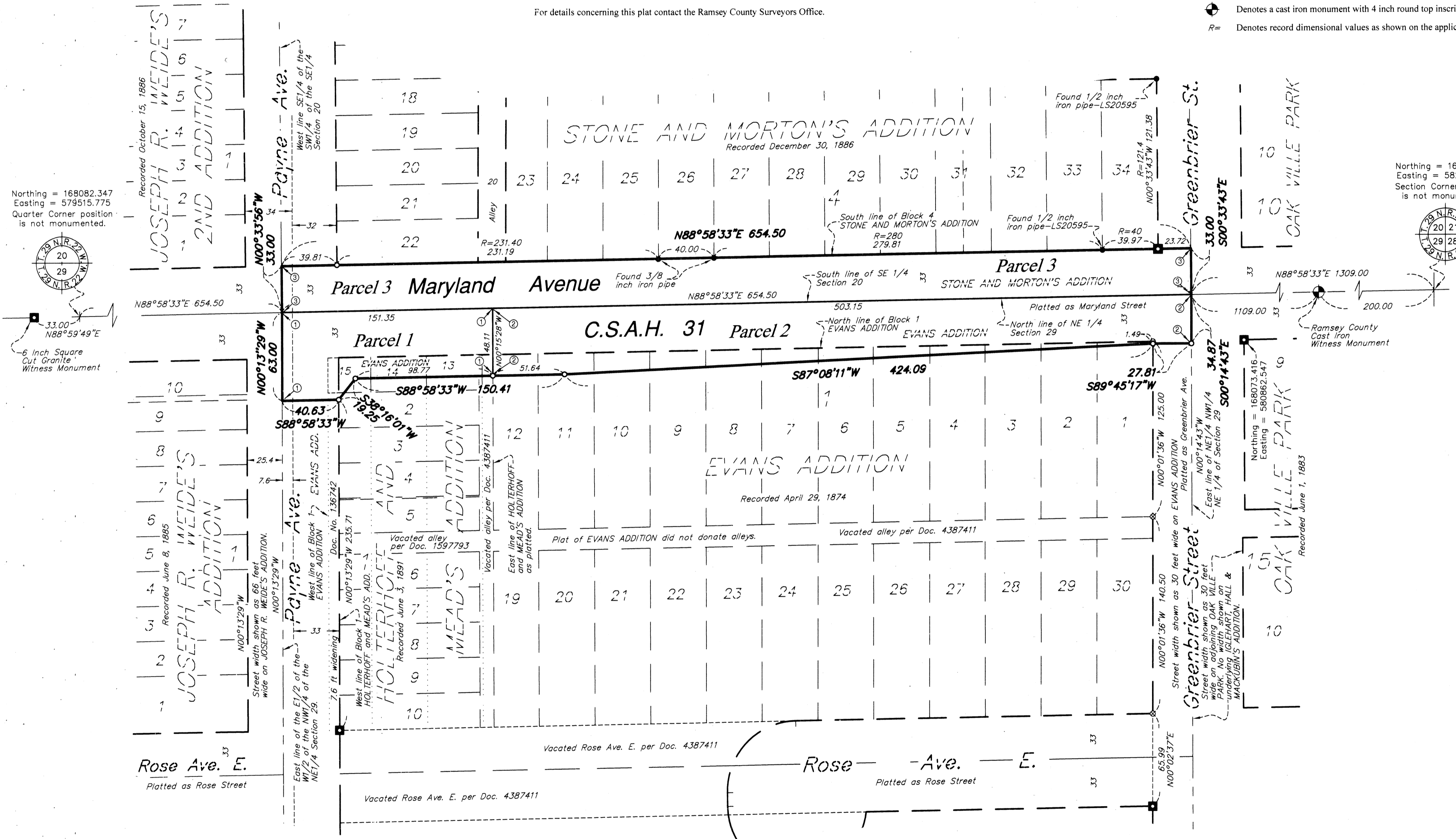
For details concerning this plat contact the Ramsey County Surveyors Office.

## LEGEND

- Denotes a right of way boundary monument consisting of a 5/8 inch by 14 inch solid iron rod with an aluminum cap inscribed "Ramsey County R/W - LS 20261". If physical conditions following construction prohibit setting an iron rod a survey nail with disk inscribed "RAMSEY COUNTY - LS 20261" will be substituted.
- Denotes found 1/2 inch iron pipe monument with no cap unless otherwise noted. If found monument is destroyed during construction it will be replaced with a 5/8 inch by 14 inch solid iron rod with a plastic cap inscribed "RAMSEY COUNTY - LS 20261". If physical conditions following construction prohibit setting an iron rod a survey nail with disk inscribed "RAMSEY COUNTY - LS 20261" will be substituted.
- ⊕ Denotes found chiseled "X" in concrete, as shown on 2009 survey by Mark S. Hanson, Sunde Land Surveying. If destroyed during construction monument will be replaced with a 5/8 inch by 14 inch solid iron rod with a plastic cap inscribed "RAMSEY COUNTY - LS 20261". If physical conditions following construction prohibit setting an iron rod a survey nail with disk inscribed "RAMSEY COUNTY - LS 20261" will be substituted.
- Denotes a found 8 inch square cut granite monument, unless otherwise noted.
- ⊕ Denotes a cast iron monument with 4 inch round top inscribed RAMSEY COUNTY.
- R= Denotes record dimensional values as shown on the applicable adjacent subdivision plat.



Ram  
Co  
ROW  
5



Northing = 168082.347  
Easting = 579515.775  
Quarter Corner position is not monumented.

6 Inch Square Cut Granite Witness Monument

Northing = 168129.136  
Easting = 582133.350  
Section Corner position is not monumented.

Pursuant to Minnesota Statutes, Section 160.085, Section 160.14 and Resolution 2014-088 of the Board of Commissioners for Ramsey County, Minnesota, I hereby certify that this highway right of way plat is adopted to facilitate the acquisition and establishment of right-of-way for highway. This plat applies to that portion of County State Aid Highway No. 31 (Maryland Avenue), from Payne Avenue to Greenbrier Street, which is located in Sections 20 and 29, Township 29 North, Range 22 West. The road authority may refer to this plat for purposes of establishment, acquisition or disposition of land identified herein.

Date: June 19, 2014  
James E. Jolaas, PE  
Ramsey County Engineer  
Minnesota License No 16159

I hereby certify that this plat was prepared by me or under my direct supervision and that I am a duly Licensed Land Surveyor under the laws of the State of Minnesota; that this plat meets the requirements of Minnesota Statutes, Section 160.085 and Section 160.14, Subdivision 1; that all monuments shown on the plat will be correctly placed in the ground upon the completion of construction as stated in the legend hereon; that all measurements are correctly shown on this plat; and that all right of way boundary lines are correctly designated on this plat.

Date: June 19, 2014  
Craig W. Hinzman, LS  
Ramsey County Surveyor  
Minnesota License No. 20261

County Recorder, County of Ramsey, State of Minnesota  
I hereby certify that this plat of RAMSEY COUNTY HIGHWAY RIGHT OF WAY PLAT NO. 5 - C.S.A.H. 31 - MARYLAND AVE. was filed in the office of the County Recorder for public record on this 24 day of June, 2014, at 9 o'clock A. M. as Document Number 4514184

Todd W. Jolaas  
Deputy County Recorder

Registrar of Titles, County of Ramsey, State of Minnesota  
I hereby certify that this plat of RAMSEY COUNTY HIGHWAY RIGHT OF WAY PLAT NO. 5 - C.S.A.H. 31 - MARYLAND AVE. was filed in the office of the Registrar of Titles for public record on this 24 day of June, 2014, at 9 o'clock A. M. as Document Number 4507701

Todd W. Jolaas  
Deputy Registrar of Titles

PARCEL	OWNERS NAME	PROPERTY INFORMATION	SQUARE FOOTAGE			PROPERTY IDENTIFICATION NUMBER
			EXISTING HIGHWAY R/W	ADDITIONAL HIGHWAY R/W	TOTAL HIGHWAY R/W	
1	CITY OF ST. PAUL	Parts of HOLTERHOFF AND MEAD'S ADDITION and EVANS ADDITION	6,213	1,763	7,976	29-29-22-12-0216
2	CITY OF ST. PAUL	Part of EVANS ADDITION	16,650	4,295	20,945	29-29-22-12-0216
3	PUBLIC	PREVIOUSLY DEDICATED ROAD	21,598	0	21,598	NONE