

6204 (10-62) 901
NEG. 177
 Louis Zabel, et al.
 Pt. SE 1/4, Sec. 6-30-23
 0.74 Ac.
 0.09 Ac. Adch.
 0.33 Ac. Total

6204 (10-62) 901
NEG. 177B
 Ed. D. Embertson, et al.
 Pt. SW 1/4 SE 1/4, Sec. 6-30-23
 0.06 Ac.

END. & ORDER NO. 14745
 & WID. ORDER NO. 14746
 S.P. 6204 & 6205 (10-62) 901

BEG. & ORDER NO. 14976
 & WID. ORDER NO. 14977
 S.P. 0203 (10-62) 903

TURNBACK RELEASE DATA
 RELEASE NO. 1193 & 1195
 (M301-PLAT 02-M13)

| FROM TO | AZIMUTH | DISTANCE |
|------------------|--------------------|----------|
| M301 TB10 | 32°18'25" | 45.00' |
| TB10 TB11 | 122°18'25" | 345.19' |
| TB11 TB12 | 118°01'04" | 401.12' |
| TB12 TB13 | 122°18'25" | 450.00' |
| TB13 TB14 | 131°14'50" | 116.55' |
| CURVE DATA | | |
| TB14 TB15 | Δ-12°55'57" | |
| | R-736.24' | |
| | L-166.18' | |
| | CH. AZ. 147°17'19" | |
| TB15 TB16 | 153°45'18" | 36.65' |
| CURVE DATA | | |
| TB16 TB17 | Δ-53°19'27" | |
| | R-783.94' | |
| | L-729.60' | |
| | CH. AZ. 180°25'02" | |
| TB17 TB18 | 117°04'45" | 420.00' |
| TB18 TB19 | 207°04'45" | 40.00' |
| TB19 M6 | 27°04'45" | 420.00' |
| M6 M7 | 297°04'45" | 20.00' |
| (M6-PLAT 02-M13) | | |

TURNBACK RELEASE DATA
 RELEASE NO. 1193 & 1195

| FROM TO | AZIMUTH | DISTANCE |
|------------|--------------------|----------|
| M7 TB20 | Δ-53°19'30" | |
| | R-723.94' | |
| | L-673.77' | |
| | CH. AZ. 00°25'02" | |
| TB20 TB21 | 333°45'18" | 36.65' |
| CURVE DATA | | |
| TB21 M211 | Δ-12°55'56" | |
| | R-676.24' | |
| | L-152.63' | |
| | CH. AZ. 327°17'20" | |
| M211 M301 | 302°18'25" | 1291.27' |

TURNBACK RELEASE DATA
 RELEASE NO. 1193

| FROM TO | AZIMUTH | DISTANCE |
|-------------------|------------|----------|
| M15 M13 | 275°37'38" | 366.90' |
| M13 M212 | 179°50'27" | 193.65' |
| M212 S1 | 356°48'42" | 22.34' |
| S1 S2 | 89°57'10" | 330.11' |
| S2 S3 | 121°30'26" | 402.40' |
| S3 S4 | 180°00'45" | 57.13' |
| S4 S5 | 90°00'45" | 132.53' |
| (M16-PLAT 02-M13) | | |
| M16 TB24 | 309°26'35" | 235.27' |
| TB24 M315 | 309°26'35" | 1311.69' |
| M315 TB22 | 180°00'12" | 97.11' |
| TB22 TB23 | 0°00'12" | 135.96' |

TURNBACK RELEASE DATA
 RELEASE NO. 1193

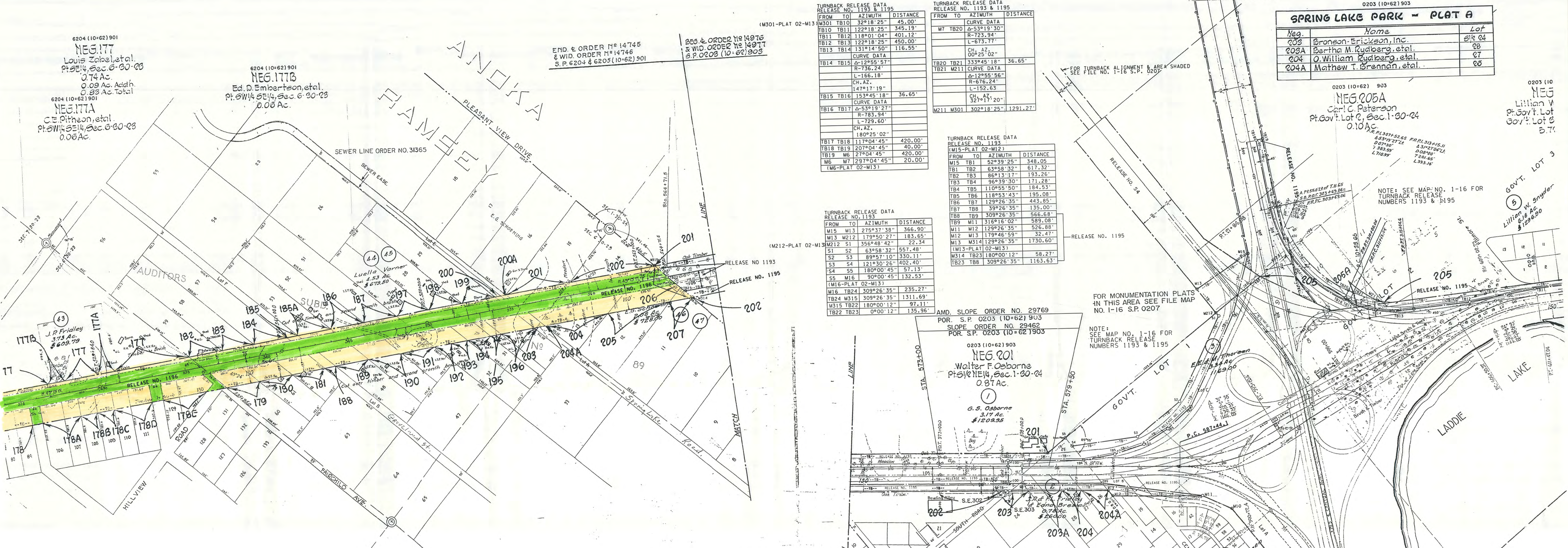
| FROM TO | AZIMUTH | DISTANCE |
|-------------------|------------|----------|
| M15 TB1 | 52°39'25" | 348.05' |
| TB1 TB2 | 63°58'32" | 617.32' |
| TB2 TB3 | 86°13'17" | 193.26' |
| TB3 TB4 | 96°39'30" | 171.28' |
| TB4 TB5 | 110°55'50" | 184.53' |
| TB5 TB6 | 118°53'43" | 195.08' |
| TB6 TB7 | 129°26'35" | 443.85' |
| TB7 TB8 | 39°26'35" | 135.00' |
| TB8 TB9 | 309°26'35" | 566.69' |
| TB9 M11 | 316°16'02" | 589.08' |
| M11 M12 | 129°26'35" | 526.88' |
| M12 M13 | 179°46'59" | 32.47' |
| M13 M314 | 129°26'35" | 1730.60' |
| (M13-PLAT 02-M13) | | |
| M314 TB23 | 180°00'12" | 58.27' |
| TB23 TB8 | 309°26'35" | 1163.63' |

0203 (10-62) 903
SPRING LAKE PARK - PLAT A

| Neg. | Name | Lot |
|------|----------------------------|---------|
| 203 | Bronson-Erickson, Inc. | 81/2 24 |
| 203A | Bertha M. Rydberg, et al. | 28 |
| 204 | O. William Rydberg, et al. | 27 |
| 204A | Mathew T. Brennan, et al. | 26 |

0203 (10-62) 903
NEG. 205A
 Carl C. Peterson
 Pt. Gov't. Lot 2, Sec. 1-30-24
 0.10 Ac.

0203 (10-62) 903
NEG.
 Lillian V. Boyt, et al.
 Gov't. Lot 3
 5.71 Ac.



6204 (10-62) 901
AUDITORS SUBDIVISION NO. 89, RAMSEY CO.

| Neg. | Name | Lot | Neg. | Name | Lot |
|------|--------------------------------|-----|------|-------------------------------|---------|
| 177 | Carl E. Larson, et al. | 53 | 184 | Freda Victoria Matson | Pt. 21 |
| 178A | George F. Porter, et al. | 60 | 195 | Fritz Hjeltness, et al. | Pt. 21 |
| 178B | Gottlieb P. Welz, et al. | 61 | 196 | Ed. D. Hudoba, et al. | 30 |
| 178C | Frank E. Nippert, et al. | 62 | 197 | Evan A. Dillberg, et al. | 27 |
| 178D | Lawrence E. Gilbertson, et al. | 63 | 198 | Gordon G. Goltz, et al. | 28 |
| 179 | Roy M. Esse, et al. | 64 | 199 | Nels Moller, et al. | 29 |
| 180 | Charlotte M. Stauffer, et al. | 65 | 200 | Bronson-Erickson Inc., et al. | E 1/2 E |
| 181 | Bronson-Erickson Inc., et al. | F | 200A | Bronson-Erickson Inc., et al. | W 1/2 E |
| 182 | Howard C. Lemire, et al. | 66 | 201 | Pearl Davis, et al. | 15 |
| 183 | Clarence W. Foster, et al. | 67 | 202 | Bronson-Erickson Inc. | 14 |
| 184 | Bronson-Erickson Inc. | 68 | 203 | Bronson-Erickson Inc. | E 1/2 A |
| 185 | Harold Hanson, et al. | 69 | 204 | Bronson-Erickson Inc. | 13 |
| 186 | W. J. Fitzpatrick, et al. | 70 | 204A | Bronson-Erickson, et al. | W 1/2 A |
| 187 | Ben O. Dant, et al. | 71 | 205 | Luella Varner, et al. | Pt. 12 |
| 188 | Raymond J. Martin, et al. | 72 | 206 | James Kinne, et al. | Pt. 11 |
| 189 | | 73 | 207 | | |

0203 (10-62) 903
NEG. 202
 Oscar F. Bronson, et al.
 Pt. S 1/2 NE 1/4, Sec. 1-30-24
 2.58 Ac.

AMD. SLOPE ORDER NO. 29769
 POR. S.P. 0203 (10-62) 903
 SLOPE ORDER NO. 29462
 POR. S.P. 0203 (10-62) 903

0203 (10-62) 903
NEG. 201
 Walter F. Osborne
 Pt. S 1/2 NE 1/4, Sec. 1-30-24
 0.87 Ac.

G.S. Osborne
 3.17 Ac.
 \$1209.95

NOTE: SEE MAP NO. 1-16 FOR
 TURNBACK RELEASE
 NUMBERS 1193 & 1195

RELEASE NO. 1196
 RAMSEY COUNTY
 EFFECTIVE 7-15-00
 FILE MAP 5-5 3/3

6

7