

6204 (10-62) 901
 NE
 Louis
 Pt. SE 1/4
 0.00
 6204 (10-62)
 NEG. 177
 C.E. Pitheor
 Pt. SW 1/4 SE 1/4
 0.06 AC

6204 (10-62) 901

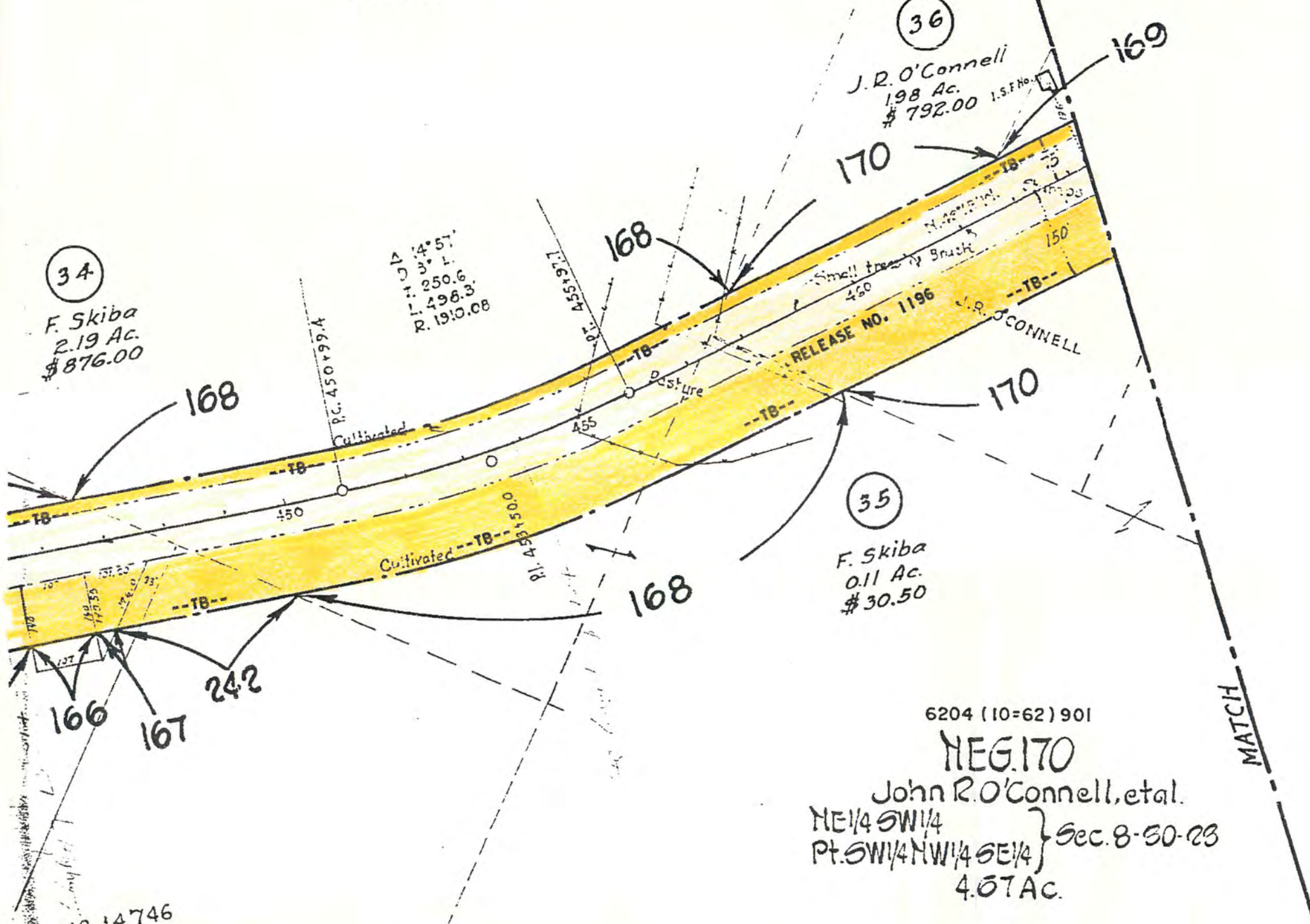
SPRING LAKE PARK HILL VIEW ADDITION

Neg.	Name	Lot
178	Oscar Bronson, et al.	78-84 incl.
178A	Oscar Bronson, et al.	106 & 107
178B	Le Roy J. Johnson, et al.	108
178C	Daniel E. Kelly, et al.	109
178D	Elmer E. Olson, et al.	110 & 111
178E	Ellsworth Erickson, et al.	109 & 110

08 (8-62) 901
 Kiba
 2.8-30-23

6204 (10-62) 901
 NEG. 168
 Frank Skiba, et al.
 Pt. NW 1/4 SE 1/4, Sec. 8-30-23
 0.12 Ac.

6204 (10-62) 901
 NEG. 169
 Louise Paron, et al.
 Pt. SE 1/4, Sec. 8-30-23
 0.16 Ac.



NEG. 164 (6-62) 901
 Raymond Skiba
 NW 1/4 SE 1/4, Sec. 8-30-23
 0.88 Ac.

NEG. 166 [6204 (10-62) 901]
 Anna Na Deau
 Pt. SE 1/4 SE 1/4, Sec. 8-30-23
 0.23 Ac.

NEG. 167
 Lou D. Sansome, et al.
 Pt. SE 1/4 SE 1/4, Sec. 8-30-23
 0.13 Ac.

6204 (10-62) 901
 NEG. 170
 John R. O'Connell, et al.
 NE 1/4 SW 1/4, Sec. 8-30-23
 4.37 Ac.

6204 (10-62) 901
 NEG. 172 Dismissed 12-1-59
 C.J. Johnson, et al.
 Pt. SE 1/4 NW 1/4, Sec. 8-30-23
 0.25 Ac.

6204 (10-62) 901
 NEG. 2172
 Anthony Donatelle
 Pt. SE 1/4 NW 1/4, Sec. 8-30-23
 R/W 0.42 Ac.
 Reconveyance Q.C.D. 7-11-96 0.13 Ac.

6204 (10-62) 901
 NEG. 173
 Mabel F. O'Connell, et al.
 SW 1/4 NW 1/4, Sec. 8-30-23
 9.74 Ac.

6204 (10-62) 901
 NEG. 175
 Theodore Fibson
 Pt. NE 1/4 NE 1/4, Sec. 7-30-23
 0.21 Ac.

6204 (10-62) 901
 NEG. 176
 John Albert Johnson, Est.
 Pt. NW 1/4 NE 1/4, Sec. 7-30-23
 4.09 Ac.

6204 (10-62) 901
 NEG. 176A
 State of Minnesota, et al.
 Pt. NE 1/4, Sec. 7-30-23
 0.06 Ac.

(A1)
 J.A. Johnson
 3.80 Ac.
 \$114,000

(39)
 J.J. O'Connell
 3.54 Ac.
 \$1416.00

(37)
 J.R. O'Connell
 2.45 Ac.
 \$980.00

(38)
 J.O.C. Bures
 1.30 Ac.
 \$650.00

6204 (10-62) 901
 NEG. 171
 Mary L. Bures Mc Cauley, et al.
 Pt. SE 1/4 NW 1/4, Sec. 8-30-23
 1.78 Ac.

AMD. WIDTH ORDER NO. 28811
 ACCESS ORDER NO. 28812
 SLOPE EASE ORDER NO. 28813
 POR. S.P. 6204 (10-62) 901

TEMP. EASE ORDER NO. 67137
 SP. 6204 (10-62) 901

6204 (10-62) 901
 NEG. 174
 Joseph Foley, et al.
 Pt. NW 1/4 NW 1/4, Sec. 8-30-23
 1.11 Ac.

6204 (10-62) 901
 NEG. 174A
 Charles E. O'Connell
 Pt. NW 1/4 NW 1/4, Sec. 8-30-23
 0.01 Ac.

5

6