

OFFICE OF COUNTY ENGINEER
RAMSEY CO. MINN.

Plan

Survey

CO. RD. A2

From..... *To*.....

Road Acc't. No...... *65*.....

Date Filed..... *3-5-31*.....

File..... *31-65*.....

PROJ. 31-65

COUNTY ROAD "A²"

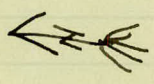
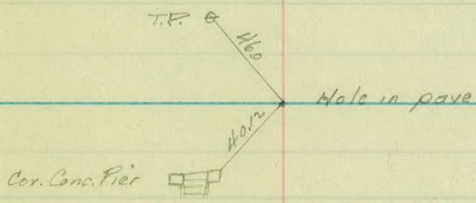
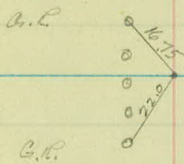
PROJECT 31-65

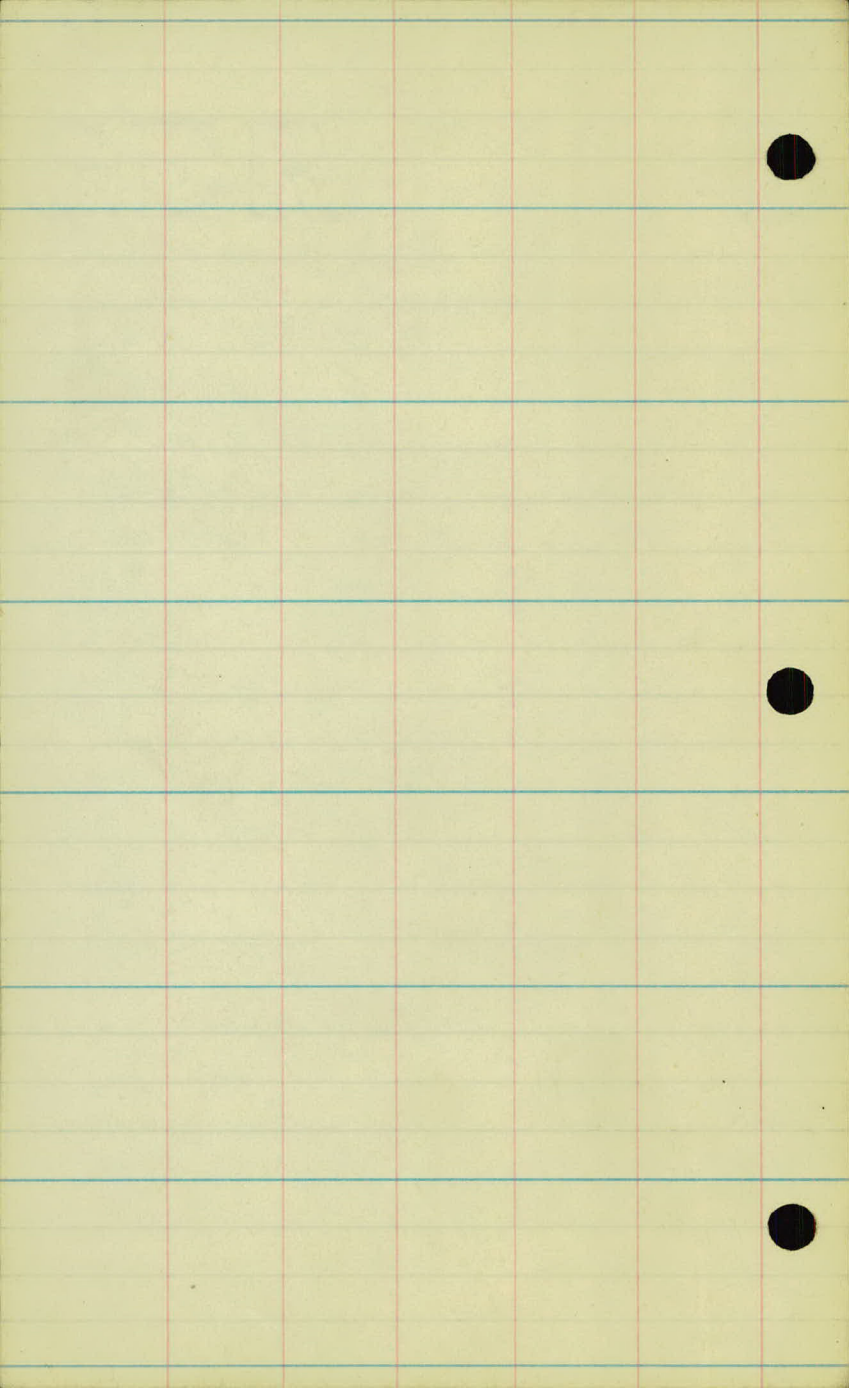
16+00

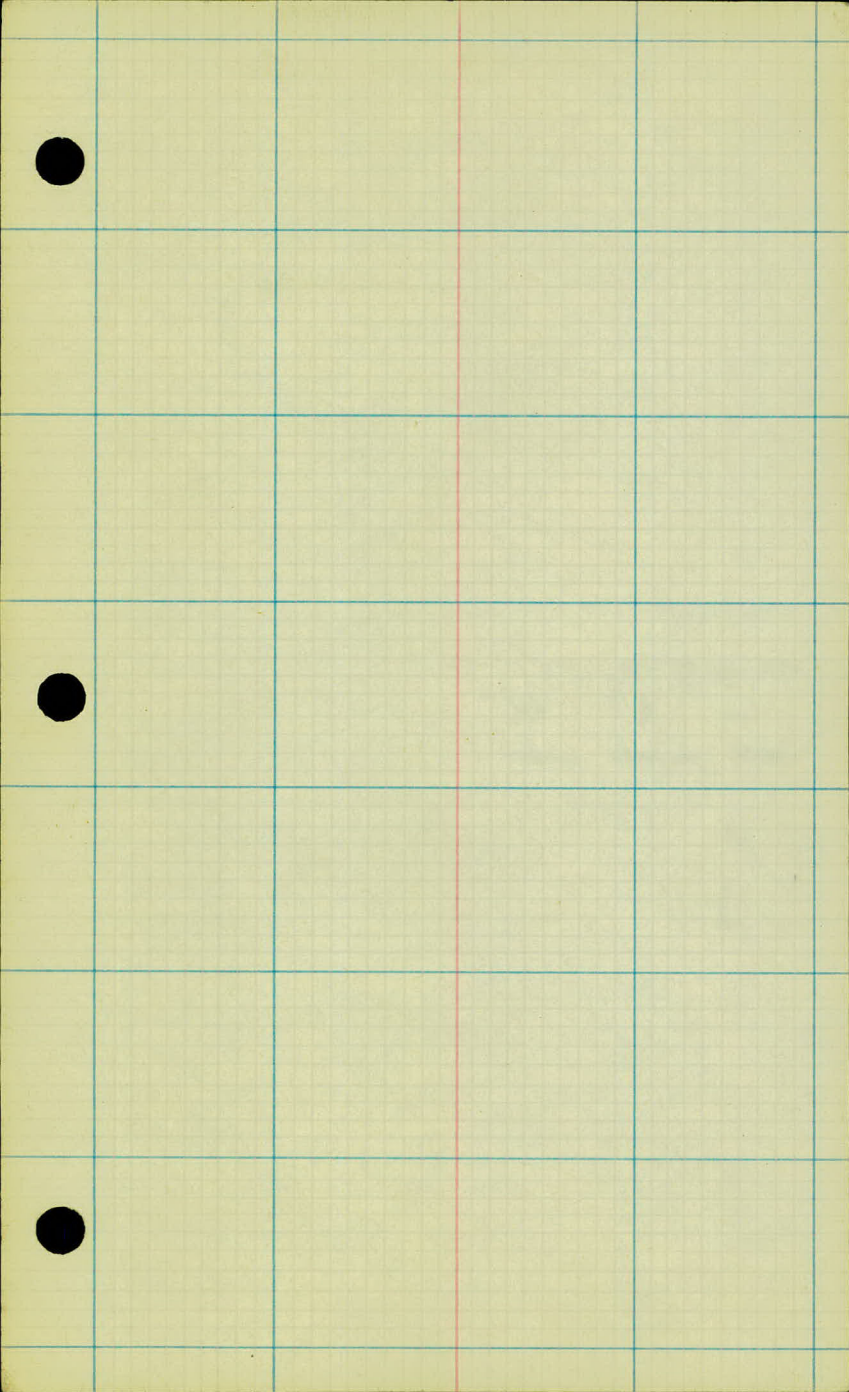
8+00

£ Edgerton St.

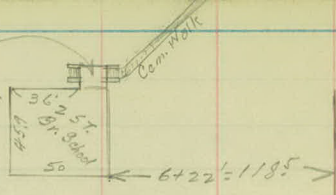
0+00



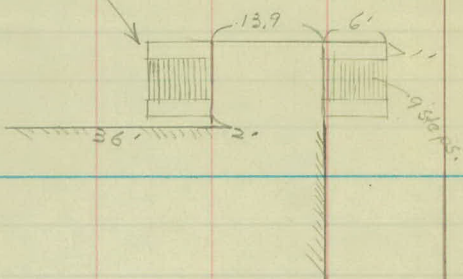




6



5



4

3

£

2

1

0+00

12

11

10

9

8

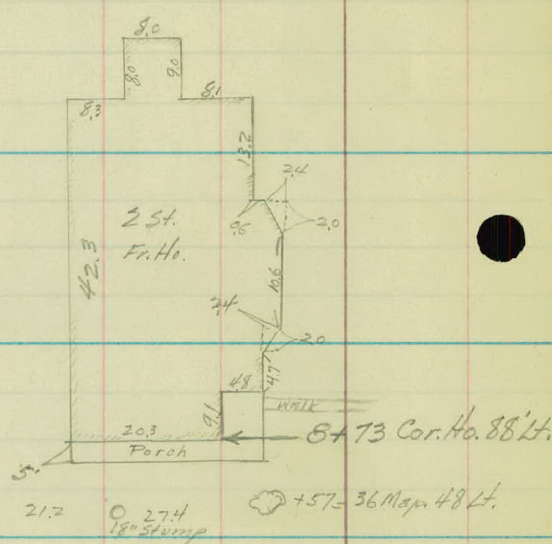
7

6 cont.

24° Map →

24° Map →

24° Map →



£

+95 N. end X Drain 19.3

- +421 T.P. 22.6
- +14 Δ G.R. 10'
- +07 Bgg. G.R. 10.5
- +04 K.D. 9. 11.3
- +91 Ctr. F.E.
- 15'x22' Vit 17.5

- +65 Beg. Low Land.
- +38-3' Apple Tree 33'
- +24 2' Apple Tree 33.6
- +07 A.T.R. 19.4 + 25.5

+78 Cor. Ch. Coop 428

+42 P. Dr. 15'x2.55 Conc. Cbk. Side Dr. 142

+95 T.P. 23'

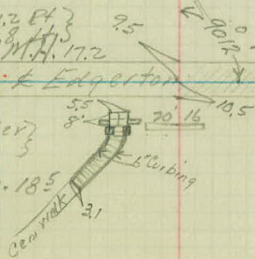
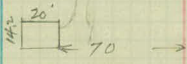
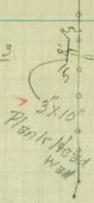
+66 Cor. Gar.

- +81 Side Drain 12'x7' Vit H
- +81 Ctr. Steps Wooden
- +57 26' Maple 48
- +40 T.P. 23.5
- +31 Stop Sq. 16.5
- +28 T.R. 49.5
- +23 X Drain (21.2 sq) 18"x36" C.M. 14.8 11.5
- +14 = T.S. + T. Co. M.H. 17.2

- +77 RR 83'
- +76 = 18'x18" C.M. under Walk = 25.5 to S. end 5
- +58 Tractor Sq. 18.5
- +50 8" Elm 40.5
- +48 T.P. 23.5
- +23-8" Elm 42.5

- +95 8" Elm 42.5
- +94 Merry 30-Round 72.5
- +94 Flag Pole 103'

- +94 End Side Dr. 26.7
- +76 End Scattered Oaks
- +24 So. end Drain 203'
- F 36
- F 36
- F 36.5
- F 37.6
- +69 G.P. 27.5
- +69 Δ F 67'
- +57 F 67' Δ
- +37 Tractor Sq. 20.5
- +27-Ed Sq. 26'
- +25 End Tile 21.2
- +79 FF. 18.5
- +76 = X Drain 19"x36" C.M.
- +68 Stop Sq. 22.5
- +08 = 18" 0 68.5
- +01-7" 0 58'
- +96 Db 1/2" 0.445
- +90-18" 0.42'
- +84-15" 0.64'



Scattered Oaks

16

15

14

13

G.P. 105

F 42.1

+54.24" Cor 60.5

+15.24" Cor 79.5

G.P. 10

+96 Dbl Pole
142 + 25'



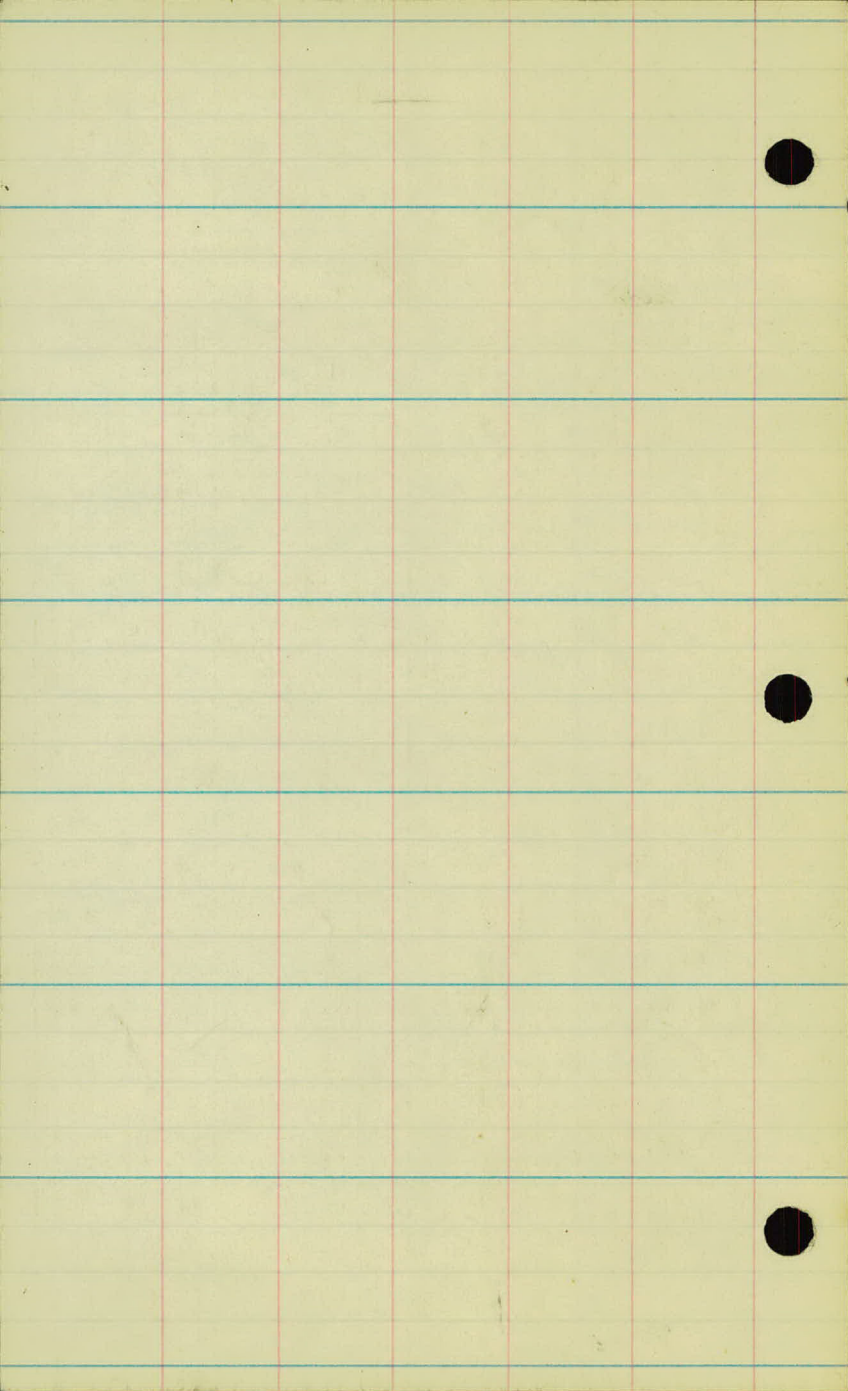
F 41.1

Gr. Rail 10'

F = 37.8

+63 Dbl Pole
145 + 25'





SECTIONS

PROJ. 31-65

Sta	+	H.I.	-	Elev.
B.M.	7.84	910.67		902.83
T.F.	6.19	914.36	2.50	908.17
B.M.			0.12	914.24
0 + 00				911.2

+25 11.6

+50 12.1

+75 12.7

1 + 00 13.2

+25 13.6

B.M.	5.59	919.83	0.12	914.24
------	------	--------	------	--------

0 + 00

+25

+50

+75

1 + 00

+25

Left. £ Right
Spike in 24" Oak 50' Lt Sta 26+05 (Dr. Sota St. Notes)

Spike in T.P 23' Lt Sta. 0+90

$\frac{1.2}{50}$ $\frac{1.8}{34}$ $\frac{2.6}{31}$ $\frac{3.2}{22}$ $\frac{4.8}{20}$ $\frac{4.8}{16}$ $\frac{3.2}{13}$ $\frac{3.2}{13}$ $\frac{3.6}{13}$ $\frac{8.2}{22}$ $\frac{12.0}{50}$ $\frac{16.5}{100}$

$\frac{0.0}{50}$ $\frac{1.3}{33}$ $\frac{1.6}{30}$ $\frac{2.7}{22}$ $\frac{4.5}{20}$ $\frac{4.5}{16}$ $\frac{2.8}{17}$ $\frac{2.8}{14}$ $\frac{3.3}{14}$ $\frac{6.4}{19}$ $\frac{8.0}{24}$ $\frac{11.7}{50}$ $\frac{17.3}{100}$

$\frac{2.6}{13}$ $\frac{6.2}{20}$ $\frac{7.2}{26}$ $\frac{10.8}{50}$ $\frac{16.5}{100}$

$\frac{2.7}{13}$ $\frac{4.8}{19}$ $\frac{5.8}{21}$ $\frac{9.2}{50}$ $\frac{15.0}{100}$

$\frac{1.7}{13}$ $\frac{4.5}{21}$ $\frac{7.4}{50}$ $\frac{13.1}{100}$

$\frac{1.2}{13}$ $\frac{2.8}{18}$ $\frac{2.6}{21}$ $\frac{4.8}{50}$ $\frac{10.0}{100}$

$\frac{3.1}{100}$

8.6

$\frac{2.0}{100}$

8.2

$\frac{1.3}{100}$ $\frac{5.0}{50}$ $\frac{6.0}{34}$ $\frac{7.0}{28}$ $\frac{7.4}{23}$ $\frac{9.4}{19}$ $\frac{9.4}{16}$ $\frac{17}{12}$ 7.7

$\frac{0.7}{100}$ $\frac{4.5}{50}$ $\frac{5.0}{34}$ $\frac{6.2}{29}$ $\frac{6.7}{22}$ $\frac{8.8}{19}$ $\frac{8.8}{17}$ $\frac{7.2}{12}$ 7.1

$\frac{4.0}{100}$ $\frac{4.0}{50}$ $\frac{4.4}{34}$ $\frac{5.7}{29}$ $\frac{6.1}{23}$ $\frac{8.0}{20}$ $\frac{8.4}{16}$ $\frac{6.7}{12}$ 6.6

$\frac{4.4}{100}$ $\frac{3.7}{50}$ $\frac{4.3}{33}$ $\frac{5.4}{30}$ $\frac{5.7}{22}$ $\frac{8.2}{20}$ $\frac{8.2}{16}$ $\frac{6.3}{12}$ 6.2

91983 ✓

1+50

913.9

+75

14.1

2+00

14.3

+25

14.4

+50

14.6

+75

14.7

3+00

14.8

+31

15.1 ✓

T.F.

6.28

925.69 ✓

2.42

917.41 ✓

+38

15.2

+75

↓

15.4

4+00

15.4

+25

15.2

+50

15.0

Left \neq Right

$\frac{0.0}{100}$ $\frac{35}{50}$ $\frac{40}{34}$ $\frac{4.7}{30}$ $\frac{50}{21}$ $\frac{76}{19}$ $\frac{76}{16}$ $\frac{60}{12}$ 5.9 $\frac{64}{13}$ $\frac{82}{17}$ $\frac{82}{20}$ $\frac{64}{23}$ $\frac{82}{50}$ $\frac{100}{75}$ $\frac{12.2}{100}$

$\frac{0.5}{100}$ $\frac{40}{50}$ $\frac{40}{34}$ $\frac{4.8}{30}$ $\frac{52}{21}$ $\frac{73}{18}$ $\frac{73}{16}$ $\frac{5.7}{11}$ 5.7 $\frac{60}{13}$ $\frac{77}{18}$ $\frac{77}{20}$ $\frac{50}{24}$ $\frac{54}{42}$ $\frac{70}{73}$ $\frac{20}{100}$

$\frac{1.8}{100}$ $\frac{40}{60}$ $\frac{4.7}{36}$ $\frac{5.1}{22}$ $\frac{74}{19}$ $\frac{74}{16}$ $\frac{56}{12}$ 5.5 $\frac{5.8}{13}$ $\frac{74}{17}$ $\frac{74}{20}$ $\frac{40}{26}$ $\frac{3.7}{50}$ $\frac{50}{75}$ $\frac{6.0}{100}$

$\frac{3.0}{100}$ $\frac{50}{58}$ $\frac{56}{42}$ $\frac{5.0}{34}$ $\frac{5.5}{30}$ $\frac{5.8}{21}$ $\frac{7.2}{19}$ $\frac{7.0}{16}$ $\frac{5.5}{12}$ 5.4 $\frac{5.7}{13}$ $\frac{7.5}{17}$ $\frac{7.5}{19}$ $\frac{3.3}{25}$ $\frac{3.0}{54}$ $\frac{4.5}{100}$

$\frac{4.7}{100}$ $\frac{6.0}{57}$ $\frac{5.8}{32}$ $\frac{6.0}{21}$ $\frac{7.2}{19}$ $\frac{6.7}{16}$ $\frac{5.4}{12}$ 5.2 $\frac{5.5}{13}$ $\frac{7.0}{17}$ $\frac{7.1}{21}$ $\frac{3.1}{26}$ $\frac{2.6}{34}$ $\frac{2.3}{50}$ $\frac{3.2}{100}$

$\frac{5.5}{100}$ $\frac{6.5}{62}$ $\frac{7.0}{50}$ $\frac{6.3}{29}$ $\frac{5.8}{21}$ $\frac{7.3}{18}$ $\frac{5.3}{11}$ 5.1 $\frac{5.3}{13}$ $\frac{6.8}{17}$ $\frac{7.1}{20}$ $\frac{3.2}{25}$ $\frac{2.6}{34}$ $\frac{2.2}{50}$ $\frac{2.4}{100}$

$\frac{5.6}{100}$ $\frac{7.0}{61}$ $\frac{6.7}{26}$ $\frac{5.7}{21}$ $\frac{7.2}{18}$ $\frac{7.2}{16}$ $\frac{5.6}{13}$ $\frac{5.7}{11}$ 5.0 $\frac{5.2}{13}$ $\frac{7.2}{17}$ $\frac{7.2}{20}$ $\frac{3.6}{24}$ $\frac{2.2}{50}$ $\frac{2.7}{100}$

$\frac{3.7}{100}$ $\frac{5.3}{50}$ $\frac{5.6}{35}$ $\frac{5.3}{21}$ $\frac{6.8}{19}$ $\frac{6.8}{16}$ $\frac{4.8}{12}$ 4.7 $\frac{5.1}{13}$ $\frac{7.0}{16}$ $\frac{7.0}{20}$ $\frac{5.0}{23}$ $\frac{2.7}{50}$ $\frac{2.0}{7.7}$ $\frac{2.5}{100}$

$\frac{3.2}{100}$ $\frac{4.6}{50}$ $\frac{5.5}{34}$ $\frac{9.2}{29}$ $\frac{9.0}{21}$ $\frac{10.6}{18}$ $\frac{10.6}{16}$ $\frac{8.7}{12}$ 8.5 $\frac{9.0}{13}$ $\frac{10.7}{17}$ $\frac{10.7}{21}$ $\frac{8.6}{23}$ $\frac{6.7}{50}$ $\frac{6.0}{71}$ $\frac{6.2}{100}$

$\frac{7.8}{100}$ $\frac{2.8}{65}$ $\frac{4.5}{35}$ $\frac{7.0}{29}$ $\frac{8.8}{21}$ $\frac{10.4}{19}$ $\frac{10.4}{16}$ $\frac{8.4}{12}$ 8.3 $\frac{8.9}{13}$ $\frac{10.6}{17}$ $\frac{10.6}{22}$ $\frac{8.4}{24}$ $\frac{8.5}{35}$ $\frac{7.7}{50}$ $\frac{6.2}{100}$

$\frac{1.0}{100}$ $\frac{2.5}{65}$ $\frac{4.0}{35}$ $\frac{7.7}{28}$ $\frac{9.1}{21}$ $\frac{10.5}{19}$ $\frac{10.5}{17}$ $\frac{8.6}{12}$ 8.3 $\frac{8.8}{14}$ $\frac{10.7}{17}$ $\frac{10.7}{21}$ $\frac{7.8}{24}$ $\frac{8.3}{28}$ $\frac{9.5}{60}$ $\frac{7.7}{100}$

$\frac{0.7}{100}$ $\frac{2.6}{60}$ $\frac{4.0}{33}$ $\frac{8.2}{27}$ $\frac{9.6}{21}$ $\frac{10.7}{19}$ $\frac{10.7}{17}$ $\frac{8.7}{13}$ 8.6 $\frac{9.1}{13}$ $\frac{10.8}{17}$ $\frac{10.8}{21}$ $\frac{7.4}{24}$ $\frac{8.2}{29}$ $\frac{11.0}{65}$ $\frac{9.5}{100}$

$\frac{0.6}{100}$ $\frac{2.6}{60}$ $\frac{4.0}{34}$ $\frac{9.0}{26}$ $\frac{9.6}{21}$ $\frac{10.7}{19}$ $\frac{10.7}{15}$ $\frac{8.8}{13}$ 8.7 $\frac{9.0}{13}$ $\frac{10.8}{17}$ $\frac{10.8}{21}$ $\frac{8.0}{24}$ $\frac{8.6}{28}$ $\frac{11.2}{58}$ $\frac{11.7}{84}$ $\frac{11.0}{100}$

92369 ✓

+75

914.9

5 + 00

14.8

+25

14.6

+50

14.3

+80

13.8

+88

13.6

6 + 00

13.4 ✓

T.P.

703

922.68 ✓

8.04

915.65 ✓

+05

13.3

+35

12.6

+50

12.2

+75

11.9

7 + 00

11.3

+25

10.6 ✓

T.P.

4.80

920.45 ✓

7.03

915.65 ✓

Left ≠ Right.

0.5 3.4 4.3 9.3 9.8 11.0 11.0 8.8 9.3 11.0 11.0 9.3 10.7 12.0 12.8 14.4
100 50 36 27 21 19 16 12 88 73 17 21 22 40 62 88 100

1.0 3.7 4.9 8.0 9.0 10.0 11.0 11.0 9.1 9.4 10.3 11.3 13.1 15.4 16.0
100 50 37 31 27 22 20 16 12 89 11 16 22 50 86 100

1.4 3.3 4.8 9.0 9.8 11.0 11.0 10.6 9.1 9.6 10.6 12.4 13.3 ← Face
100 65 40 31 23 20 18 16 12 9.1 11 16 29 44 ← Born

2.1 3.4 5.2 8.6 10.0 11.0 11.0 9.5 9.7 11.7 12.7 13.4 16.4
100 72 41 32 22 20 16 12 9.4 12 19 41 45 100

2.2 4.2 6.0 8.1 9.6 11.0 11.0 9.9 10.2 11.8 12.7 13.0 14.5 18.5
100 65 38 31 22 21 17 13 9.9 12 20 33 47 53 100

2.6 5.3 7.2 9.6 10.0 10.4 11.4 12.0 ← Face 100 Ho.
100 63 41 24 13 10.1 14 18 31

1.7 3.6 6.7 9.6 10.2 10.5 11.7 11.8 ← Ice Ho.
100 77 47 26 15 10.3 13 20 31

0.7 5.2 4.7 5.4 7.8 8.2 9.2 10.8 10.8 9.5 9.5 10.5 11.1 ← Ice Ho.
100 53 45 38 29 24 22 21 16 15 9.4 12 16 31

0.8 2.2 4.2 7.4 7.8 11.2 11.2 10.6 10.1 10.1 10.6 11.5 11.6 10.4 11.3 12.7 14.5
100 65 41 32 26 22 17 15 11 10.1 12 15 21 24 39 67 100

0.6 2.0 4.0 7.5 7.8 11.7 11.7 10.7 10.8 12.0 12.0 9.7 10.5 12.0 13.6
100 68 42 31 27 20 16 13 10.5 13 19 21 25 36 62 100

0.6 2.4 4.4 7.4 8.1 12.2 12.2 11.2 11.2 12.6 12.6 9.8 9.6 8.8 9.7 10.4 10
100 61 38 31 25 20 17 13 10.8 15 18 21 24 28 30 50 70 100

1.0 3.0 4.7 7.7 8.2 12.2 12.2 11.4 11.5 13.0 13.0 7.6 8.0 9.0 9.3
100 60 38 29 27 21 16 12 11.4 15 17 20 32 50 80 100

1.8 3.1 3.4 4.8 8.0 8.5 12.8 13.0 12.1 12.4 13.5 13.4 8.2 7.6 8.7
100 73 32 36 29 26 21 16 12 12.1 13 17 19 37 50 100
42

Sta.	+	H.I. ✓	-	Elev.
		920.45		
+50				910.1
+62				09.8
+72				09.5
B.M.	192	914.60 ✓	7.77	912.68 ✓
+75				09.4
+79				09.1
+83		Top Shoulder		09.0
8+00		£ Edgerton.		08.75
+16				09.2
+20				09.4
+22				09.5
+26				09.9
+34				10.4
B.M.	11.64	924.32 ✓	1.92	912.68 ✓
+34				

Left £ Right

$\frac{0.7}{100}$ $\frac{25}{50}$ $\frac{37}{33}$ $\frac{60}{30}$ $\frac{7.3}{25}$ $\frac{10.9}{19}$ $\frac{11.2}{17}$ $\frac{10.4}{12}$ 10.4 $\frac{10.8}{14}$ $\frac{12.3}{18}$ $\frac{9.4}{26}$ $\frac{80}{44}$ $\frac{82}{65}$ $\frac{87}{100}$

$\frac{1.4}{100}$ $\frac{2.8}{62}$ $\frac{3.7}{37}$ $\frac{66}{30}$ $\frac{8.4}{24}$ $\frac{11.7}{18}$ $\frac{11.7}{17}$ $\frac{10.6}{12}$ 10.7 $\frac{11.3}{14}$ $\frac{13.0}{19}$ $\frac{10.5}{27}$ $\frac{10.5}{50}$ $\frac{11.0}{86}$ $\frac{11.3}{100}$

$\frac{68}{100}$ $\frac{66}{83}$ $\frac{77}{74}$ $\frac{85}{63}$ $\frac{9.8}{40}$ $\frac{10.2}{29}$ $\frac{11.8}{25}$ $\frac{12.3}{20}$ $\frac{10.8}{15}$ 11.0 $\frac{11.8}{15}$ $\frac{13.8}{20}$ $\frac{12.8}{23}$ $\frac{12.1}{40}$ $\frac{12.4}{50}$ $\frac{13.2}{78}$ $\frac{14.0}{100}$

Spike in P.P. 83' Lt Stn. 7 + 79

$\frac{1.6}{100}$ $\frac{1.8}{83}$ $\frac{2.6}{67}$ $\frac{4.0}{50}$ $\frac{4.7}{43}$ $\frac{3.8}{38}$ $\frac{4.0}{32}$ $\frac{4.8}{25}$ $\frac{7.2}{25}$ $\frac{7.2}{20}$ $\frac{5.3}{18}$ 5.2 $\frac{6.4}{15}$ $\frac{8.4}{17}$ $\frac{9.4}{43}$ $\frac{10.4}{67}$ $\frac{10.8}{84}$ $\frac{11.4}{100}$

$\frac{2.8}{100}$ $\frac{4.0}{68}$ $\frac{5.6}{45}$ $\frac{3.8}{39}$ $\frac{4.1}{31}$ $\frac{5.2}{19}$ 5.5 $\frac{6.6}{17}$ $\frac{7.8}{42}$ $\frac{9.2}{68}$ $\frac{10.8}{100}$

$\frac{1.2}{100}$ $\frac{2.4}{74}$ $\frac{3.4}{50}$ $\frac{4.0}{34}$ $\frac{5.0}{20}$ 5.6 $\frac{6.9}{19}$ $\frac{8.0}{42}$ $\frac{9.5}{72}$ $\frac{10.8}{100}$

$\frac{0.90}{100}$ $\frac{2.05}{75}$ $\frac{3.33}{50}$ $\frac{4.65}{25}$ 5.85 $\frac{7.15}{25}$ $\frac{8.35}{50}$ $\frac{9.6}{75}$ $\frac{10.85}{100}$

$\frac{0.8}{100}$ $\frac{3.2}{50}$ $\frac{4.6}{25}$ 5.4 $\frac{6.7}{22}$ $\frac{8.3}{50}$ $\frac{11.0}{100}$

$\frac{3.6}{100}$ $\frac{4.6}{67}$ $\frac{5.2}{36}$ $\frac{6.6}{16}$ $\frac{5.0}{15}$ 5.2 $\frac{6.3}{19}$ $\frac{8.4}{50}$ $\frac{11.2}{100}$

$\frac{3.6}{100}$ $\frac{4.6}{67}$ $\frac{5.2}{36}$ $\frac{6.6}{16}$ $\frac{5.0}{15}$ 5.1 $\frac{6.3}{20}$ $\frac{8.7}{22}$ $\frac{10.0}{50}$ $\frac{12.2}{100}$

$\frac{0.8}{62}$ $\frac{1.5}{50}$ $\frac{1.7}{25}$ $\frac{6.4}{17}$ $\frac{6.4}{15}$ $\frac{4.8}{13}$ 4.7 $\frac{5.5}{18}$ $\frac{8.2}{21}$ $\frac{6.2}{26}$ $\frac{7.2}{50}$ $\frac{10.0}{100}$

$\frac{0.2}{40}$ $\frac{1.8}{21}$ $\frac{6.4}{14}$ $\frac{4.4}{12}$ 4.2 $\frac{4.6}{16}$ $\frac{6.8}{19}$ $\frac{3.8}{28}$ $\frac{3.3}{63}$

$\frac{4.0}{100}$ $\frac{5.6}{68}$ $\frac{8.0}{60}$

13.9

924.32 ✓

+41 10.6

+46 10.9

+58 11.5

+85 12.7

9 ✓ ✓ 13.2
T.P. 12.45 927.66 9.11 915.21

+25 14.3

+50 ✓ ✓ 15.1
B.M. 8.58 928.39 7.85 919.81

+75 16.0

10 +00 16.7

+15 17.2

+43 18.0

+60 18.9

11 +00 19.0

$\frac{2.0}{100}$ 20 $\frac{3.4}{66}$ $\frac{4.4}{64}$ $\frac{10.0}{46}$ $\frac{11.3}{32}$ $\frac{15.4}{22}$ $\frac{14.0}{15}$ $\frac{14.0}{12}$ $\frac{13.7}{13.7}$ $\frac{14.1}{16}$ $\frac{16.2}{18}$ $\frac{13.4}{25}$ $\frac{13.4}{41}$ $\frac{12.4}{57}$ $\frac{10.4}{65}$ $\frac{7.0}{100}$

$\frac{14}{100}$ $\frac{20}{44}$ $\frac{9.7}{29}$ $\frac{11.2}{22}$ $\frac{15.4}{14}$ $\frac{13.6}{12}$ $\frac{13.4}{13.4}$ $\frac{14.0}{16}$ $\frac{15.6}{19}$ $\frac{13.4}{25}$ $\frac{13.2}{37}$ $\frac{12.0}{46}$ $\frac{4.8}{70}$ $\frac{7.0}{100}$

$\frac{0.5}{100}$ $\frac{10}{67}$ $\frac{16}{34}$ $\frac{13.0}{20}$ $\frac{15.0}{16}$ $\frac{15.0}{15}$ $\frac{12.8}{12}$ $\frac{12.8}{12.8}$ $\frac{13.0}{15}$ $\frac{15.0}{18}$ $\frac{13.0}{23}$ $\frac{12.0}{37}$ $\frac{4.3}{57}$ $\frac{8.0}{100}$

House $\frac{0.7}{56}$ $\frac{0.8}{32}$ $\frac{12.5}{18}$ $\frac{13.8}{15}$ $\frac{11.7}{12}$ $\frac{11.6}{11.6}$ $\frac{12.1}{16}$ $\frac{13.2}{18}$ $\frac{11.7}{20}$ $\frac{10.8}{26}$ $\frac{3.0}{38}$ $\frac{4.0}{58}$ $\frac{7.8}{100}$

Ho. $\frac{0.3}{56}$ $\frac{0.7}{31}$ $\frac{13.4}{16}$ $\frac{13.4}{15}$ $\frac{11.1}{12}$ $\frac{11.1}{11.1}$ $\frac{11.4}{15}$ $\frac{12.4}{18}$ $\frac{11.0}{20}$ $\frac{10.2}{24}$ $\frac{2.1}{33}$ $\frac{4.8}{64}$ $\frac{8.5}{100}$

$\frac{3.4}{100}$ $\frac{2.8}{59}$ $\frac{3.3}{30}$ $\frac{13.4}{15}$ $\frac{15.4}{14}$ $\frac{13.6}{13}$ $\frac{13.4}{13.4}$ $\frac{13.4}{11}$ $\frac{13.8}{15}$ $\frac{14.6}{18}$ $\frac{12.8}{20}$ $\frac{12.0}{25}$ $\frac{3.2}{31}$ $\frac{6.8}{55}$ $\frac{12.2}{100}$

$\frac{3.2}{100}$ $\frac{3.2}{62}$ $\frac{3.1}{29}$ $\frac{10.2}{22}$ $\frac{11.2}{20}$ $\frac{14.4}{16}$ $\frac{14.4}{15}$ $\frac{12.6}{13}$ $\frac{12.6}{12.6}$ $\frac{12.6}{12}$ $\frac{13.0}{15}$ $\frac{13.5}{17}$ $\frac{12.2}{22}$ $\frac{4.5}{31}$ $\frac{6.2}{53}$ $\frac{10.8}{100}$

Spike in TP 1941/11 + 07 2:11:21

Gar. $\frac{3.8}{70}$ $\frac{4.4}{50}$ $\frac{4.1}{28}$ $\frac{6.6}{26}$ $\frac{14.3}{16}$ $\frac{14.3}{15}$ $\frac{12.8}{14}$ $\frac{12.8}{12.4}$ $\frac{12.5}{13}$ $\frac{12.8}{16}$ $\frac{13.4}{17}$ $\frac{13.1}{19}$ $\frac{8.2}{27}$ $\frac{4.2}{31}$ $\frac{4.6}{58}$ $\frac{11.3}{100}$

$\frac{4.2}{100}$ $\frac{3.7}{67}$ $\frac{4.7}{50}$ $\frac{4.1}{27}$ $\frac{13.1}{16}$ $\frac{13.8}{15}$ $\frac{12.0}{13}$ $\frac{11.7}{11.7}$ $\frac{11.7}{15}$ $\frac{12.7}{16}$ $\frac{12.4}{18}$ $\frac{3.6}{20}$ $\frac{6.6}{31}$ $\frac{9.3}{73}$ $\frac{10.0}{100}$

$\frac{4.5}{100}$ $\frac{4.3}{60}$ $\frac{5.5}{40}$ $\frac{4.5}{38}$ $\frac{4.5}{27}$ $\frac{8.7}{22}$ $\frac{13.7}{16}$ $\frac{13.7}{15}$ $\frac{11.2}{12}$ $\frac{11.2}{11.2}$ $\frac{11.3}{16}$ $\frac{12.3}{19}$ $\frac{4.0}{30}$ $\frac{5.0}{50}$ $\frac{7.0}{81}$ $\frac{9.5}{100}$

Dr. way. $\frac{5.1}{100}$ $\frac{4.7}{63}$ $\frac{6.5}{38}$ $\frac{10.0}{11}$ $\frac{10.4}{10.4}$ $\frac{10.7}{15}$ $\frac{11.4}{19}$ $\frac{4.0}{29}$ $\frac{4.5}{33}$ $\frac{5.0}{38}$ $\frac{4.5}{44}$ $\frac{6.5}{75}$ $\frac{8.8}{100}$

$\frac{5.2}{100}$ $\frac{4.8}{75}$ $\frac{5.5}{45}$ $\frac{5.5}{24}$ $\frac{12.4}{16}$ $\frac{12.4}{14}$ $\frac{10.4}{11}$ $\frac{10.0}{10.0}$ $\frac{10.4}{15}$ $\frac{11.2}{19}$ $\frac{4.0}{29}$ $\frac{4.5}{33}$ $\frac{4.8}{43}$ $\frac{6.2}{53}$ $\frac{9.1}{100}$

$\frac{5.8}{100}$ $\frac{6.6}{65}$ $\frac{6.2}{42}$ $\frac{6.4}{22}$ $\frac{11.2}{15}$ $\frac{10.0}{11}$ $\frac{9.4}{9.4}$ $\frac{9.9}{16}$ $\frac{10.1}{18}$ $\frac{9.8}{22}$ $\frac{4.5}{31}$ $\frac{5.3}{52}$ $\frac{7.0}{71}$ $\frac{10.5}{100}$

928.39 ✓

11 +25

919.4

+50

19.6

+75

19.8

12

B.M.

5.23

925.04 ✓

8.58

919.81 ✓

19.7

+25

19.7

+50

19.9

+75

20.0

13 +00

20.0

+25

19.9

+50

19.9

+75

20.0

14

20.0

+25

20.0

Left. $\frac{1}{2}$ Right 2-11-31

$\frac{8.1}{100}$ $\frac{7.7}{75}$ $\frac{8.0}{46}$ $\frac{7.5}{21}$ $\frac{11.2}{17}$ $\frac{11.2}{14}$ $\frac{9.5}{11}$ 9.0 $\frac{9.6}{15}$ $\frac{10.2}{18}$ $\frac{10.0}{22}$ $\frac{4.4}{30}$ $\frac{5.4}{50}$ $\frac{6.4}{66}$ $\frac{8.6}{76}$ $\frac{11.0}{100}$

$\frac{9.1}{100}$ $\frac{9.1}{75}$ $\frac{9.1}{29}$ $\frac{8.7}{21}$ $\frac{10.0}{18}$ $\frac{11.5}{16}$ $\frac{9.3}{13}$ 8.8 $\frac{9.5}{15}$ $\frac{10.3}{18}$ $\frac{10.2}{22}$ $\frac{4.6}{31}$ $\frac{5.5}{50}$ $\frac{7.1}{78}$ $\frac{9.3}{100}$

$\frac{10.7}{100}$ $\frac{10.7}{50}$ $\frac{10.0}{19}$ $\frac{11.8}{17}$ $\frac{11.8}{15}$ $\frac{9.2}{12}$ 8.6 $\frac{9.3}{15}$ $\frac{10.3}{19}$ $\frac{10.4}{22}$ $\frac{6.6}{30}$ $\frac{6.0}{50}$ $\frac{7.0}{75}$ $\frac{9.0}{100}$

$\frac{11.8}{100}$ $\frac{11.6}{50}$ $\frac{11.6}{28}$ $\frac{11.2}{20}$ $\frac{11.6}{17}$ $\frac{9.1}{12}$ 8.1 $\frac{9.2}{15}$ $\frac{10.7}{21}$ $\frac{10.6}{24}$ $\frac{10.0}{27}$ $\frac{9.2}{28}$ $\frac{7.0}{49}$ $\frac{6.3}{65}$ $\frac{7.3}{85}$

Spike in top 19.5 ft 11+0.7
 $\frac{9.3}{100}$ $\frac{9.5}{29}$ $\frac{8.7}{25}$ $\frac{8.6}{17}$ $\frac{5.4}{13}$ 5.3 $\frac{5.7}{16}$ $\frac{7.0}{20}$ $\frac{7.4}{24}$ $\frac{6.8}{26}$ $\frac{6.8}{38}$ $\frac{3.4}{60}$ $\frac{2.8}{72}$ $\frac{3.8}{100}$

Not
hole

$\frac{9.6}{100}$ $\frac{10.1}{32}$ $\frac{9.5}{19}$ $\frac{5.2}{12}$ 5.1 $\frac{5.5}{17}$ $\frac{7.5}{21}$ $\frac{7.5}{28}$ $\frac{7.1}{32}$ $\frac{6.5}{60}$ $\frac{5.0}{73}$ $\frac{3.0}{100}$

$\frac{10.1}{100}$ $\frac{10.1}{26}$ $\frac{8.5}{19}$ $\frac{5.2}{13}$ 5.0 $\frac{5.0}{17}$ $\frac{7.3}{23}$ $\frac{8.3}{29}$ $\frac{7.3}{32}$ $\frac{7.0}{38}$ $\frac{6.0}{52}$ $\frac{2.7}{93}$ $\frac{2.7}{100}$

$\frac{10.6}{100}$ $\frac{11.0}{55}$ $\frac{10.6}{25}$ $\frac{8.2}{18}$ $\frac{5.3}{13}$ 5.0 $\frac{5.2}{16}$ $\frac{9.6}{25}$ $\frac{9.6}{25}$ $\frac{8.4}{29}$ $\frac{8.0}{50}$ $\frac{6.5}{76}$ $\frac{2.2}{100}$

$\frac{10.6}{100}$ $\frac{10.4}{33}$ $\frac{9.4}{20}$ $\frac{5.2}{13}$ 5.1 $\frac{5.4}{16}$ $\frac{9.1}{23}$ $\frac{8.9}{28}$ $\frac{8.3}{30}$ $\frac{7.2}{54}$ $\frac{5.8}{100}$

$\frac{11.1}{100}$ $\frac{11.0}{60}$ $\frac{10.0}{24}$ $\frac{8.6}{19}$ $\frac{5.4}{13}$ 5.1 $\frac{5.2}{16}$ $\frac{9.0}{22}$ $\frac{8.1}{50}$ $\frac{5.8}{95}$ $\frac{3.8}{100}$

$\frac{11.2}{100}$ $\frac{11.0}{60}$ $\frac{10.0}{22}$ $\frac{8.0}{18}$ $\frac{5.2}{13}$ 5.0 $\frac{5.1}{16}$ $\frac{8.1}{21}$ $\frac{9.0}{24}$ $\frac{8.4}{35}$ $\frac{5.9}{100}$

$\frac{11.2}{100}$ $\frac{11.2}{58}$ $\frac{10.2}{26}$ $\frac{8.1}{17}$ $\frac{5.4}{13}$ 5.0 $\frac{5.0}{16}$ $\frac{7.2}{19}$ $\frac{9.0}{25}$ $\frac{8.2}{37}$ $\frac{6.6}{70}$ $\frac{6.2}{97}$ $\frac{4.8}{100}$

$\frac{11.2}{100}$ $\frac{11.0}{60}$ $\frac{10.6}{37}$ $\frac{10.0}{21}$ $\frac{5.1}{13}$ 5.0 $\frac{5.0}{16}$ $\frac{8.7}{23}$ $\frac{8.0}{38}$ $\frac{7.4}{65}$ $\frac{6.2}{89}$ $\frac{3.0}{100}$

925.04 ✓

+50

920.2

+75

20.3

15

20.5

+25

20.6

+50

20.8

+75

21.0

16

21.1

B.M.	0.52	920.33 ✓	5.23	919.81 ✓	
T.P.	4.24	919.90 ✓	4.67	915.66 ✓	
B.M.			5.67	914.23 ✓	914.24 ✓

Left. ≠ Right

$\frac{10.7}{100}$ $\frac{11.0}{58}$ $\frac{10.0}{21}$ $\frac{5.3}{73}$ 4.8 4.7 $\frac{8.6}{22}$ $\frac{8.0}{39}$ $\frac{6.8}{60}$ $\frac{5.8}{90}$ $\frac{2.6}{100}$

$\frac{11.0}{100}$ $\frac{11.0}{67}$ $\frac{9.7}{21}$ $\frac{4.8}{13}$ 4.7 4.7 $\frac{8.2}{22}$ $\frac{7.2}{40}$ $\frac{6.2}{62}$ $\frac{5.5}{90}$ $\frac{1.3}{100}$

$\frac{11.0}{100}$ $\frac{11.1}{60}$ $\frac{9.4}{20}$ $\frac{5.0}{13}$ 4.5 4.6 $\frac{8.1}{21}$ $\frac{6.6}{52}$ $\frac{6.0}{76}$ $\frac{1.1}{9.3}$ $\frac{0.0}{100}$

$\frac{10.8}{100}$ $\frac{10.1}{45}$ $\frac{9.4}{21}$ $\frac{5.0}{13}$ 4.7 4.3 $\frac{7.2}{20}$ $\frac{6.8}{48}$ $\frac{5.0}{75}$ $\frac{1.2}{88}$ $\frac{0.0}{100}$

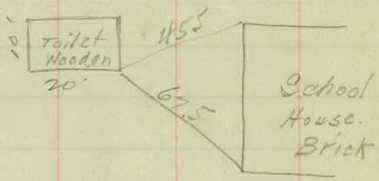
$\frac{10.7}{100}$ $\frac{10.2}{50}$ $\frac{9.5}{20}$ $\frac{5.0}{13}$ 4.2 4.4 $\frac{7.3}{19}$ $\frac{6.1}{46}$ $\frac{2.3}{71}$ $\frac{0.6}{100}$

$\frac{10.2}{100}$ $\frac{9.8}{50}$ $\frac{8.6}{20}$ $\frac{4.3}{13}$ 4.0 4.2 $\frac{6.5}{14}$ $\frac{6.1}{38}$ $\frac{2.6}{52}$ $\frac{1.4}{61}$ $\frac{0.5}{100}$

$\frac{10.2}{100}$ $\frac{9.6}{50}$ $\frac{7.6}{19}$ $\frac{4.4}{13}$ 3.9 4.2 $\frac{6.5}{14}$ $\frac{6.2}{27}$ $\frac{2.2}{42}$ $\frac{1.2}{50}$ $\frac{0.4}{100}$

Spike in T.P. Lt St 2. 11+07

Spike in T.P. Lt 0+90



Co Rd. A 2

U 25 26