

PLANS SURVEY

# EUSTIS STREET

From Larpenieur Ave. to Midland Golf Grounds

RAMSEY COUNTY PROJ. 27.64

Road  $\frac{9}{16}$  N<sup>o</sup> 64

File N<sup>o</sup> 12

2' 6"  
6' 5"  
0' 3"

9/17/26

12

Plans Survey.-  
EUSTIS STREET.  
From Carpenter Ave  
To Millcrest Golf Grounds.-

Rec. 8-25-26

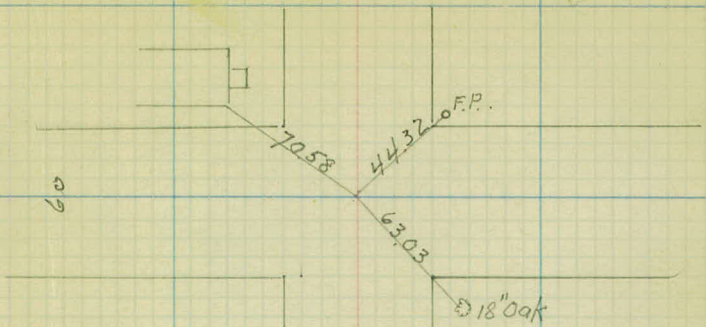
Office of Ramsey Co. Engineer	
ST. PAUL, MINN.	
Date Filed	9-17-26
File No.	10

8-17-26

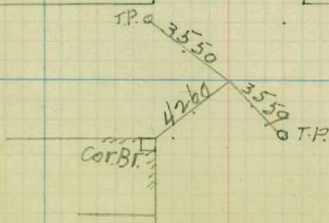
6+59.1      & Zone

0+00      & Larpenteur

60

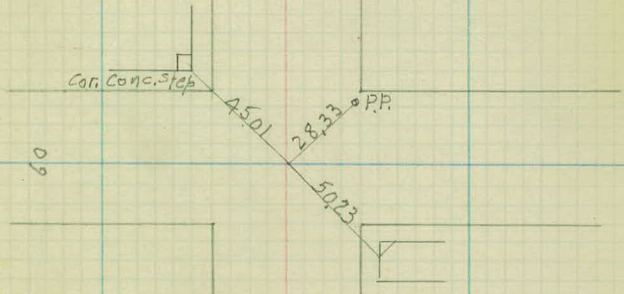
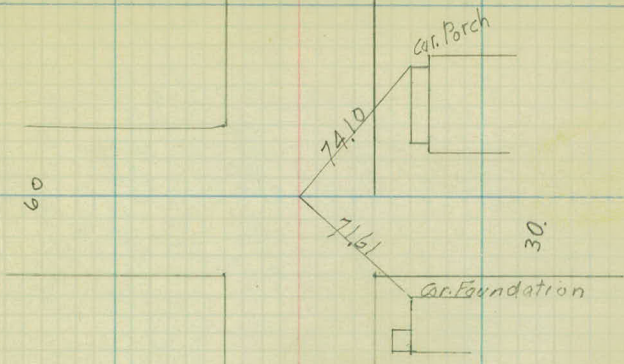


66



19+77.3    ♀ Summer

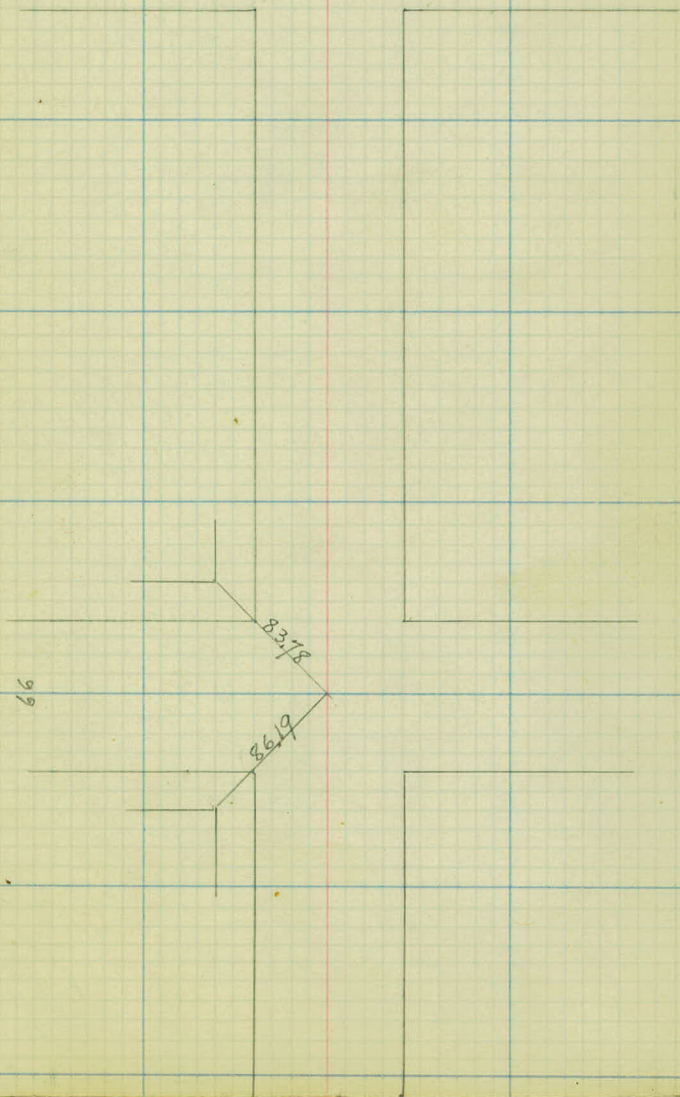
13+18.2    ♀ Spring

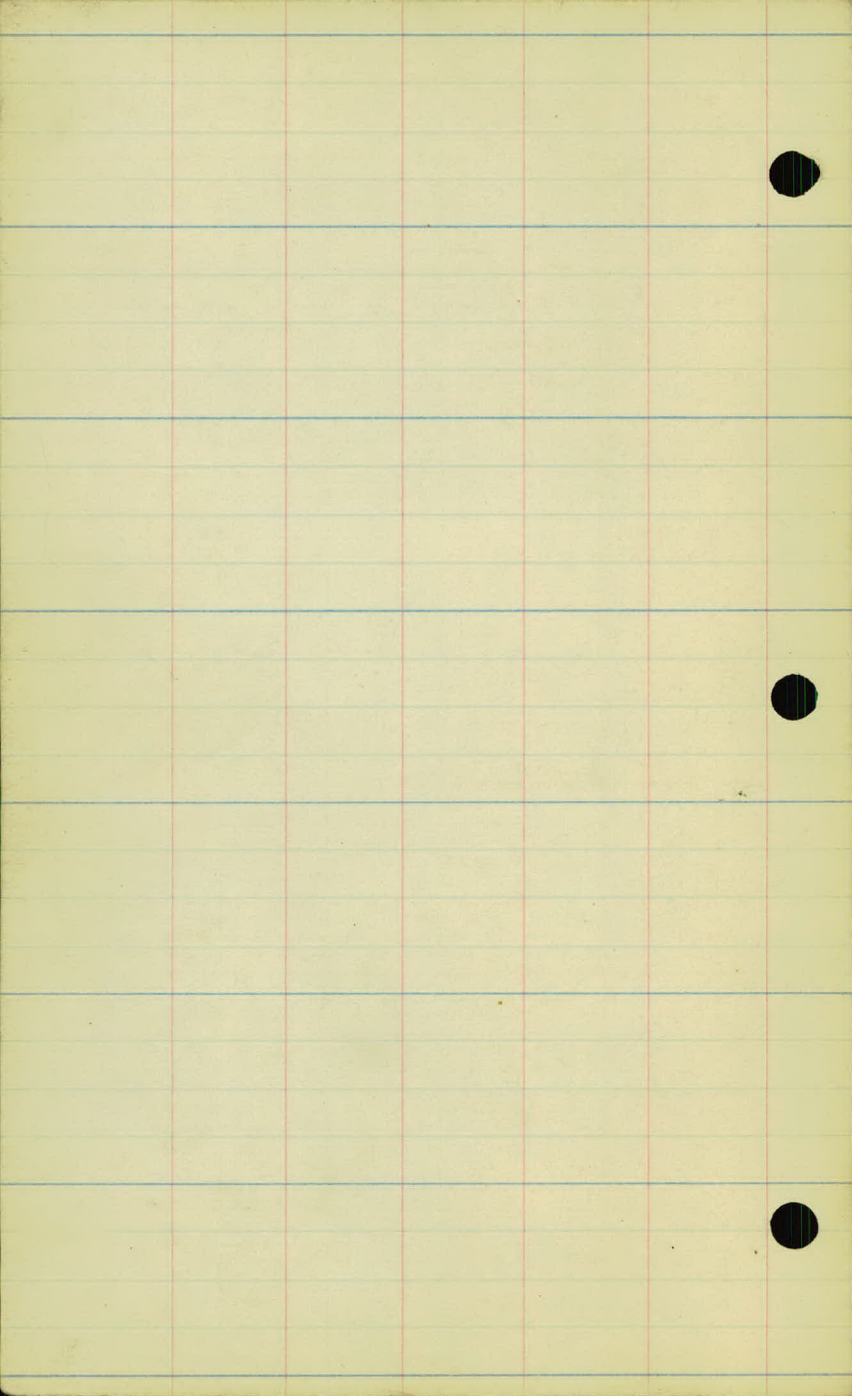


32+954 N.L. Golf Grounds

26+36.4 E Broadway

~~Millcrest~~ Golf Grounds  
Midland Hills







8-18-26

## Malvern St from Larbenteur to Broadway

317.37

0700		86	308.8
+40		9.1	08.3
1		8.0	09.4
2		2.9	14.5
	12.53	325.62✓	4.28
			313.09✓
+65		6.4	19.2
3		5.3	20.3
4		0.6	25.0
5		2.2	23.4
6		4.1	21.5
	3.10	325.65✓	3.07
			372.55✓
+59.1		4.0	21.7
7		3.8	21.9
8		5.9	19.8
+56		5.9	19.8
9		4.5	26.2
+78		1.4	24.3
10		1.4	24.3
	2.50	376.60✓	1.55
			324.10✓
+85		56	21.0
11		5.8	20.8
12		4.4	22.2
+25		3.9	22.7

⊕ Eustis Carpentier

⊕ lone

326.60

13		6.9	19.7	
+18.2		8.1	318.5	
+52		9.1	17.5	
14		9.3	17.3	
+56		9.7	16.9	
15		11.4	15.2	
	5.70	320.73	11.57	315.03
16		5.3	15.4	
17		2.7	18.0	
18		5.7	15.0	
19		10.3	10.4	
+77.3		11.7	09.0	
	1.30	311.42	10.61	310.12
20		3.7	07.7	
+80		1.3	10.1	
21		1.3	10.1	
+24		2.8	08.6	
	2.38	301.76	12.04	299.38
22		5.2	96.2	
23		7.0	94.8	
+35		6.5	95.3	
24		3.4	98.4	
	9.70	310.62	0.84	300.92
25		6.1	04.5	
+32		2.4	08.2	
26		5.4	05.2	

• & Spring

• & Summer

Swamp

Swamp

31062

+16

6.8 03.8

+23

4.4 06.2

+36.4

4.1 06.5

2.84 311.60

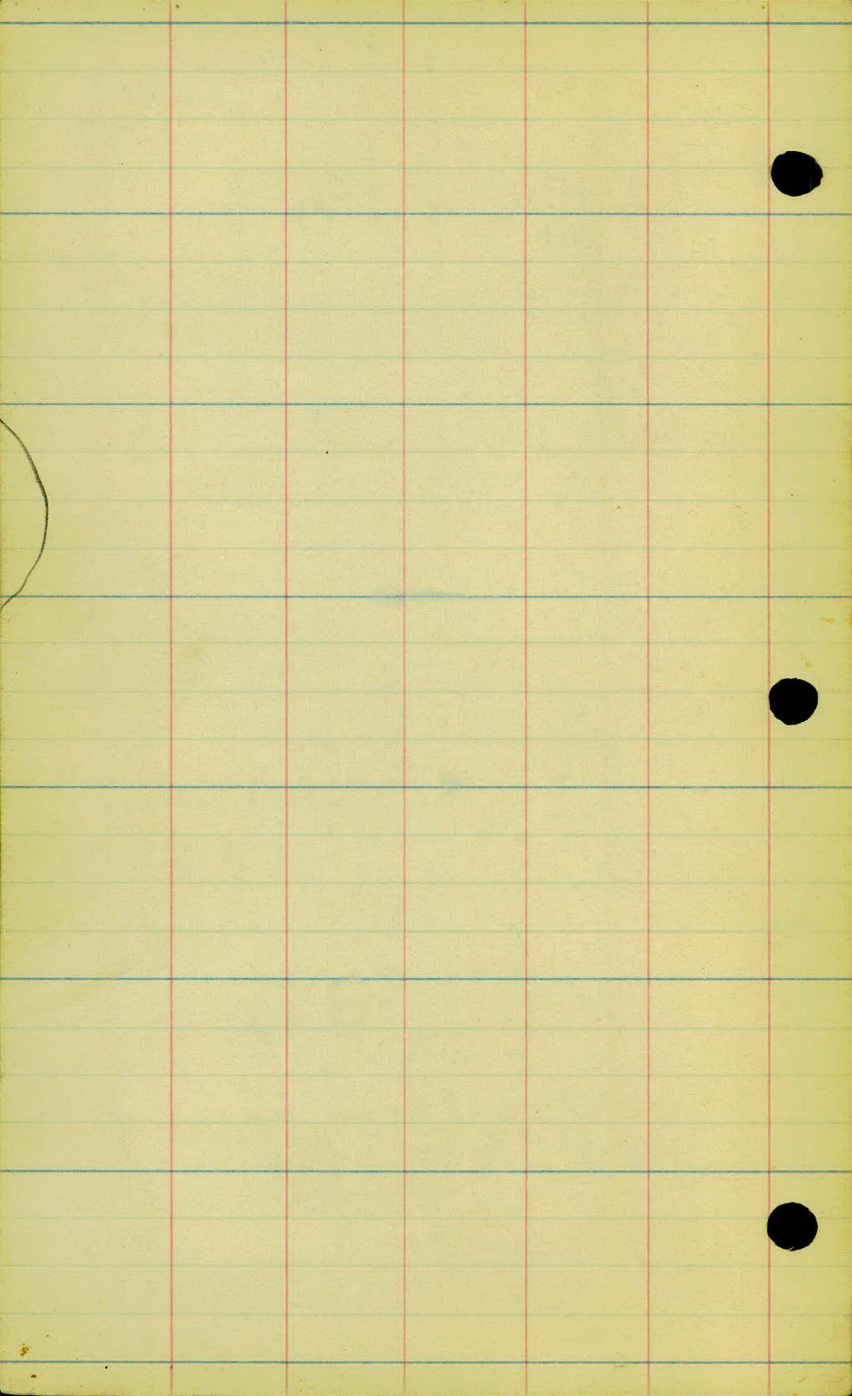
1.86 308.76 ✓

6.35 305.25

± Broadway

Top G.R. Post

Spike in 10" Oak. N.E. Cor. Eustis & Broadway





8-18-26

## Carl St. Larpenteur to Summer

	2.35	325.60 ✓		323.25
0+00			3.8	321.8 ✓
+15			3.8	21.8
1			8.2	17.4
2			7.4	18.2
	9.70	327.95 ✓	7.3 ✓	318.25 ✓
3			8.8	19.2
4			8.2	19.8
5			5.8	22.2
6			2.1	325.9
	3.38	331.28 ✓	0.05	327.90 ✓
<del>+929</del> <del>+84</del>			3.2	328.1 ✓
7			3.2	28.1
8			4.2	27.1
9			5.0	26.3
10			5.6	25.7
11			7.6	23.7
	7.27	331.32 ✓	7.23	324.05 ✓
12			8.0	23.3
13			7.8	23.5
<del>+577</del> <del>+50</del>			7.4	323.9 ✓
14			6.2	25.1
15			4.3	27.0
16			2.3	29.0
+70			3.8	27.5 ✓

3 Nails in T.P. - SE. Cor Larpenteur  
⊕ Larpenteur

⊕ lone

⊕ Spring

331.32

17

5.6 25.7

0.23 324.95 ✓ 6.60 324.72 ✓

18

2.7 22.3

19

7.9 17.1

~~20 + 0.38~~  
~~7.94~~

10.0 15.0

5.05 319.68 ✓ 10.32 314.63 ✓

4.12 315.56 ✓

2.68 317.00 ✓

⊕ Summer

3 Nails in P.P. - N.E. Gr. Eustis + Summer

8-19-26

Summer St. from Eustis to Carl

319.95  
4.35 (320.04)

60  
315.69  
317.13<sup>04</sup>

0700

2.91

4.2 15.8

1

4.3 15.7

2

5.2 14.8

3

5.2 14.8

+40

5.0 15.0

Summer St. Eustis to Malvern

318.44  
1.40 (318.53)

317.13<sup>04</sup>

0700

2.7 15.7

1

1

4.7 13.7

2

5.6 12.8

3

9.1 09.3

+25

9.5 08.9

8.37 310.16<sup>07</sup>

3 Nails in PP-NE. Con Eustis  
⊕ Eustis

⊕ Carl

⊕ Eustis

⊕ Malvern

+

7.95 313.15 305.20

7.99 320.42 0.66 312.49

8.13 322.99 5.56 314.86

8.32 830.68 0.63 322.36

5.58 332.51 3.75 326.93

5.07 332.58 5.00 327.51

1.66 323.40 10.84 321.74

7.59 325.22 5.77 317.63

1.97 323.25

6.09 323.72 317.63

5.35 318.37 x

9.60 332.23 1.09 322.63

3.94 333.16 3.01 329.22

6.72 332.40 7.48 325.68

4.51 327.89

7.51 325.14 317.63

1.75 325.00 1.90 323.24

9.91 328.15 6.76 318.24

3.83 331.72 0.26 327.89

7.24 330.86 8.10 323.62

6.83 324.03

0.71 324.09 7.48 323.38

5.58 320.26 9.41 314.68

3.28 326.98

317.98 x 3

264.43

260.39 Stch

257.04 M.H.

RR Sp. 10" Oak. L Sta 27+00 = 305.20

W. side of Conc. D.S. - Br. Store SW Cor. Larp. + Eustis  
3 Nails in T.P. SE Cor. Larp. + Carl

South Copping of Steps #200 Eustis - NW Cor. lone

N. End Conc. Step - N.V. Eustis + Spring

8-19-26

## Broadway from Eustis to Malvern

	6.35	311 <sup>58</sup> (55)	305 <sup>23</sup> (20)
0+00			4.6 307.0
1			4.9 06.7
2			4.9 06.7
3			5.2 06.4
+25			5.0 06.6
			2.84 308 <sup>74</sup> (61)

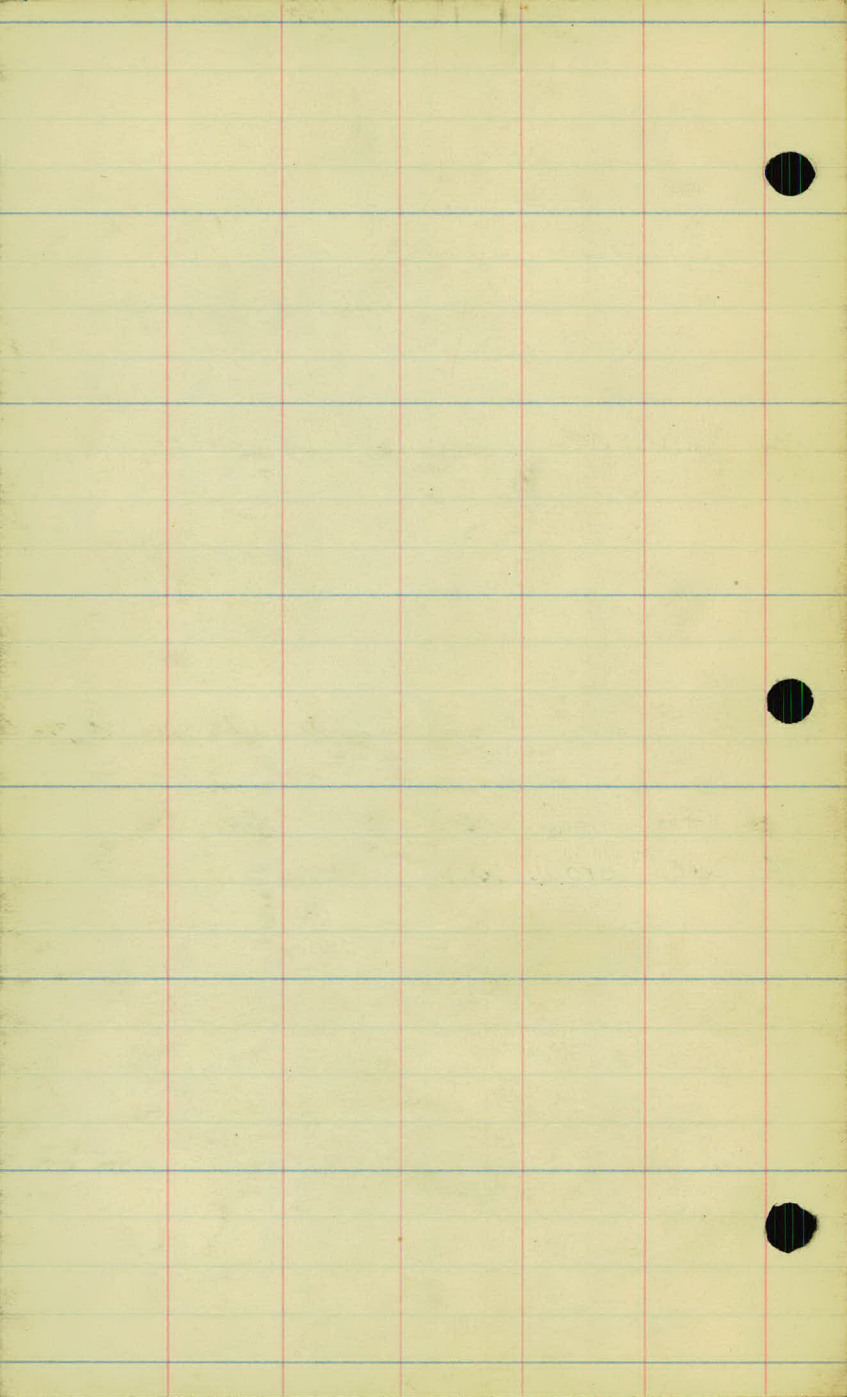
## Broadway from Eustis to Carl

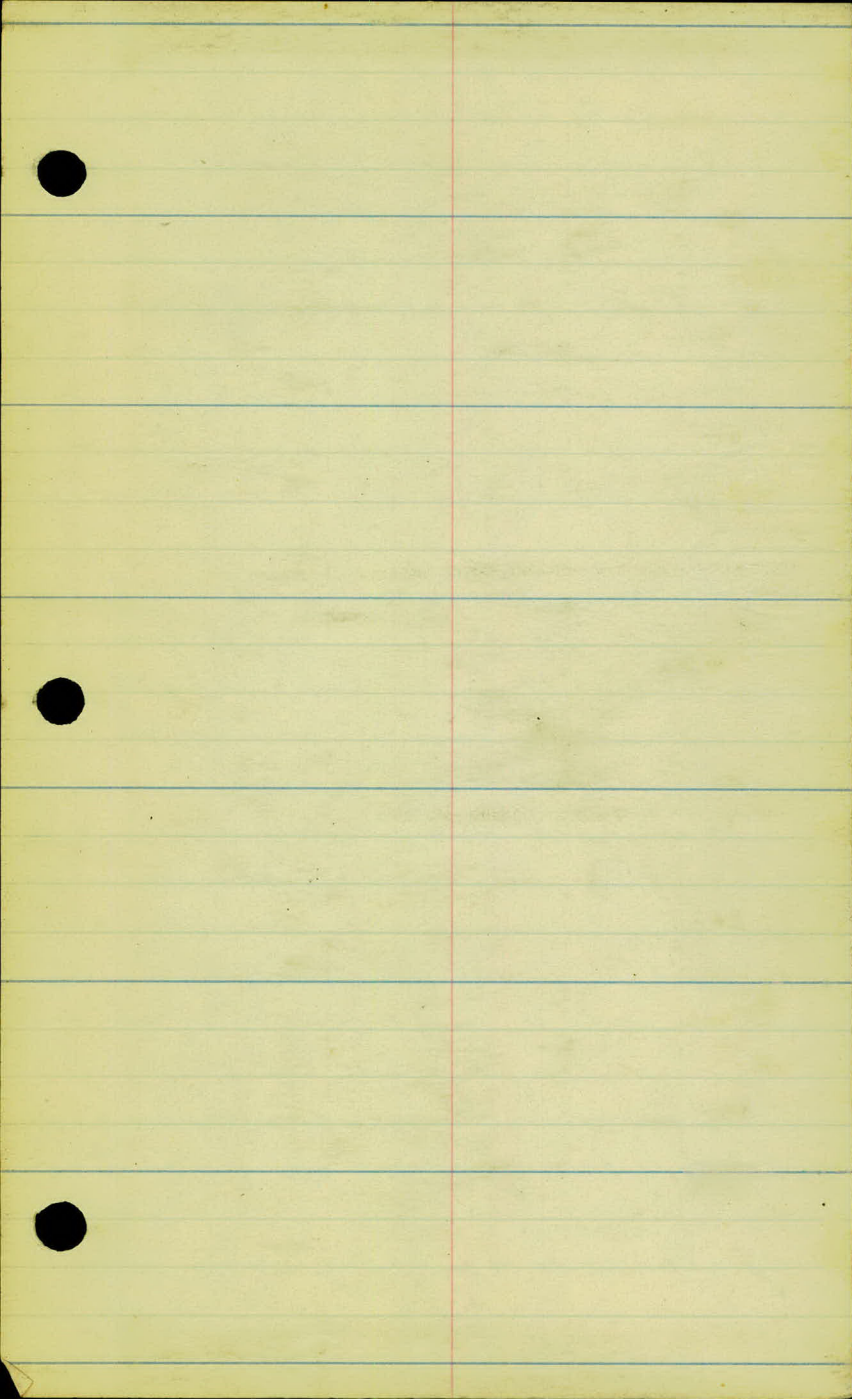
	5.07	310 <sup>30</sup> (27)	305 <sup>43</sup> (20)
0+00			3.3 307.0 ✓
1			4.5 05.8
2			4.7 05.6
3			5.7 04.6
+40			6.1 304.2 ✓

⊕ Eustis

⊕ Malvern

⊕ Carl (produced)





Eustis St. from Larpenteur to Golf Grounds

6.42 324.05 ✓

317.63

17.5 ✓  
 & Larpenteur

0 + 00

+ 50

18.3 ✓

1

18.5 ✓

+ 50

19.0 ✓

2

19.7 ✓

+ 50

20.6 ✓

3

21.5 ✓

+ 76

23.3 ✓

9.18

331.81 ✓

1.42 322.63 ✓

+ 80

23.3 ✓

4 + 35

24.9 ✓

+ 80

26.5 ✓

5

27.1 ✓

+ 50

28.2 ✓

W. Side Conc. D.S. - S.W. Cor. Larpenteur

76 66 59  
30 30

75 59 58 59  
30 12 30

74 63 56 58.  
30 7 30

8.3 65 59 5.1 5.3 59  
30 18 8 18 30  
5.2 54 49 4.4 4.3 5.6 5.7 5.1  
30 16 6 16 23 27 30

3.7 3.3 4.2 4.2 3.5 3.9 4.6 4.6  
30 25 22 12 13 22 30  
2.3 2.3 2.7 2.8 2.6 2.9 2.9  
30 24 22 9 1.5 30

13 1.3 1.7 1.2 0.8 1.0 1.4 0.6  
30 20 17 5 16 19 30  
8.5 8.7 9.0 9.0 7.1 6.9  
18 19 22 25 30

6.4 6.0 7.6 7.9 7.3 6.9 7.1 7.5 6.6 4.1 4.0  
30 14 11 9 7 14 19 23 26 30  
4.4 3.7 5.9 5.8 5.3 5.3 5.3 2.8 2.5  
30 14 12 7 15 22 26 30

4.3 3.4 5.1 4.7 4.9 4.9 5.6 4.5 2.5 2.3  
30 13 12 13 17 20 22 24 30  
4.7 3.9 5.0 4.1 3.6 3.9 4.6 4.4 2.1 2.2  
30 13 11 5 17 18 22 24 30

331.81 ✓

6

28.4'

+30

28.2'

+591

4 Ione = 28.2'

7

28.0'

3.65

332.86 ✓

2.60

329.21 ✓

South Caping  
of Steps  
No. 200 Eustis

+50

28.4'

8

28.6'

+50

28.7'

9

28.3'

+50

27.9'

10

27.7'

+50

27.4'

11

27.5'

6.01

331.67 ✓

7.20

325.66 ✓

+50

27.4'

12

27.0'

4.9	3.7	3.6	4.8	3.9	3.4	3.7	3.8	4.5	4.1	2.1	1.7
3.0	1.9	1.2	9	5		1.5	1.7	1.9	2.2	2.5	3.0
	5.2	4.4	5.3	4.2	3.6	3.8	3.8	4.5	4.6	3.0	2.8
	3.0	1.4	1.2	7		1.4	1.8	2.0	2.3	2.5	3.0

6.0	4.0	3.6	3.7	3.6
3.0	6		1.5	3.0

5.1	5.0	5.4	4.5	3.8	4.0	4.9	4.3	4.1
3.0	1.4	1.2	9		1.6	2.3	2.5	3.0

5.4	5.3	4.5	4.9	5.7	5.9	5.1	4.8
3.0	1.2		1.5	1.8	2.0	2.2	3.0

5.2	5.1	4.3	4.8	5.7	5.8	4.7	4.7
3.0	1.2		1.5	1.8	2.1	2.4	3.0

5.4	4.9	5.4	5.0	4.2	4.7	5.5	5.8	5.0	4.2	4.1
3.0	1.7	1.5	1.2		1.5	1.7	2.0	2.3	2.4	3.0

5.7	5.5	6.2	6.1	5.2	4.6	4.9	6.0	5.6	5.4
3.0	1.8	1.6	1.4	1.2		1.2	1.6	2.1	3.0

5.1	5.2	6.1	6.2	6.3	5.5	5.0	5.6	6.3	6.9	6.9	5.9
3.0	2.4	2.1	1.6	1.3	1.2		1.2	1.6	1.9	2.7	3.0

5.3	6.3	6.4	6.7	6.1	5.2	5.4	7.2	7.1	6.6
3.0	2.2	1.7	1.5	1.2		1.2	1.5	1.9	3.0

7.2	7.4	6.0	5.5	5.7	6.8	6.8	6.0	5.5
3.0	1.5	1.1		1.2	1.5	1.7	2.1	3.0

7.6	7.2	7.6	6.2	5.4	5.9	4.8
3.0	1.8	1.5	1.2		1.3	3.0

6.0	6.2	4.9	4.3	4.7	5.5	4.5
3.0	1.5	1.0		1.4	1.8	3.0

6.5	6.4	5.5	4.7	4.9	5.8	5.3
3.0	1.6	1.2		1.2	1.6	3.0

33167<sup>✓</sup>

12+50

26.5

13

26.8

+18.4

± Spring

+30

27.0

+38

26.9

5.63 333.49<sup>✓</sup> 381 327.86<sup>-</sup>

+65

26.6

14

25.8

+50

24.8

15

24.0

+50

22.9

1.00 322.95<sup>-</sup> 11.54 321.95<sup>-</sup>

16

21.5

+50

20.4

17

18.4

+50

16.9

18

16.0

69	69	59	52	54	48
30	18	13		11	30

65	57	49	51	49
30	15		11	30

56	52	47	51	44	37
30	13		13	25	30

48	52	30	04	02
15	23	26	30	

Conc. D.S.  
N.W. Cr.  
Spring

64	67	67	77	69	75	59	18	13
30	30	18	16		15	19	22	30

78	80	84	77	81	84	60	51
30	19	16		11	17	20	30

98	93	93	87	90	100	91	83
30	22	14		13	18	20	30

90	95	96	95	99	106	94	97
30	19	13		13	18	20	30

106	107	113	115	106	110	118	97	102
30	22	18	13		13	17	21	30

21	22	15	19	26	07	03	+17
30	13		13	18	20	38	30

23	34	29	26	29	35	+03	+08
30	20	10		11	17	20	30

40	50	56	52	42	50	58	33	18
30	23	13	10		12	15	20	30

66	69	61	64	63
30	18		15	30

63	80	78	70	74	80	78	65
30	27	18		11	18	25	30

322.9<sup>v</sup>

18 + 50

15.2 -

19

15.0 -

3.59 320.60<sup>v</sup> 5.94 317.01<sup>v</sup>

+ 50

15.4 -

+ 77.3

15.7 -

20

15.9 -

+ 50

15.8 -

21

15.5 -

2.01 316.71<sup>v</sup> 5.90 314.70<sup>v</sup>

+ 50

14.7 -

22

14.4 -

+ 50

13.1 -

23

13.5 -

+ 50

11.4 -

24

10.3 -

10.5	10.5	8.5	7.8	8.8	8.6	7.1
30	27	17		14	20	30

11.5	11.4	8.4	8.0	8.2	7.4
30	24	18		12	30

3 Nails P.P. - NE. Cor. Summer

7.5	7.1	6.1	5.2	5.6	6.0
30	25	20		16	30

4 Summer

5.9	5.3	4.9	5.4	5.4
30	13		11	30

5.2	5.9	5.2	4.7	5.0	5.7	5.2	5.3
30	21	14		12	15	20	30

2.0	2.6	5.7	5.3	4.8	5.4	6.2	6.4	5.7	5.9
30	27	22	18		12	16	19	21	30
1.7	2.3	5.9	5.3	5.1	5.7	6.6	6.4	6.7	
30	27	21	18		12	17	24	30	

1.2	2.4	3.1	2.7	2.0	2.4	3.7	4.1
30	25	20	15		10	14	30

3.7	3.9	2.7	2.3	2.5	4.0	4.8
30	22	18		11	15	30

6.4	5.4	4.0	3.6	4.0	4.7	4.5
30	22	19		14	16	30

3.6	2.9	5.2	4.5	4.2	4.4	5.0	3.3	3.0
30	26	23	19		12	15	21	30

7.4	7.3	5.9	5.3	5.6	5.4	5.8	3.5	2.7
30	23	19		6	14	18	23	30

8.4	8.1	7.1	6.4	6.6	6.3	7.1	4.4	4.0
30	26	20		4	13	15	21	30

316.71 ✓

24+50

09.1

3.22 311.89 ✓ 8.04 308.67 ✓

25

08.1

+50

07.2

26

06.8

+36.4

± Broadway <sup>06.7</sup>

6.89 312.05 ✓ 6.73 305.16 ✓

+65

06.9

27

07.1

+50

07.1

28

06.8

+50

06.1

2.60 307.24 ✓ 7.41 304.64 ✓

29

04.9

+50

03.9

30

02.9

85	85	78	7.6	80	7.6	82	60	62
30	24	21		4	11	15	20	30
42	40	38	42	39	48	42	42	
30	22		3	10	15	19	20	

50	50	47	51	75	74			
30	23		10	17	30			

52	53	51	59	8.1	84			
30	24		8	15	30			

53	50	52	54	57				
30	10		15	30				

Spike in 10" Oak  
N.E. Cor. Broadway

52	58	52	57	71	57	59
30	26		8	12	17	30

48	53	50	56	65	42	50
30	27		8	11	16	30

44	52	50	60	67	66	60	64
30	27		8	10	14	15	30

52	57	53	59	67	67	58	59
30	27		9	10	14	16	30

7.4	6.4	6.0	6.1	7.0	7.1	3.8
30	28		5	11	15	30

2.4	2.9	2.3	2.6	3.2	1.1	70.5
30	26		5	8	13	30

4.4	3.9	3.3	3.5	4.0	2.4	2.6
30	15		4	7	12	30

5.2	4.7	4.3	4.3	5.2	0.8	1.3
30	29		3	4	10	30

307.24 ✓

30 + 16

02.5'

+ 50

01.3'

31

300.2'

+ 50

299.6'

32

99.5'

+ 65.4

99.5'

+ 95.4

99.5' <sup>1</sup>  
N. Line Golf Ground <sup>15</sup>

5.9	5.3	4.7	4.7	5.5	0.9	0.7
30	28	.	3	5	10	30

7.2	6.3	5.9	6.0	6.5	4.6	2.0
30	27		2	6	9	30

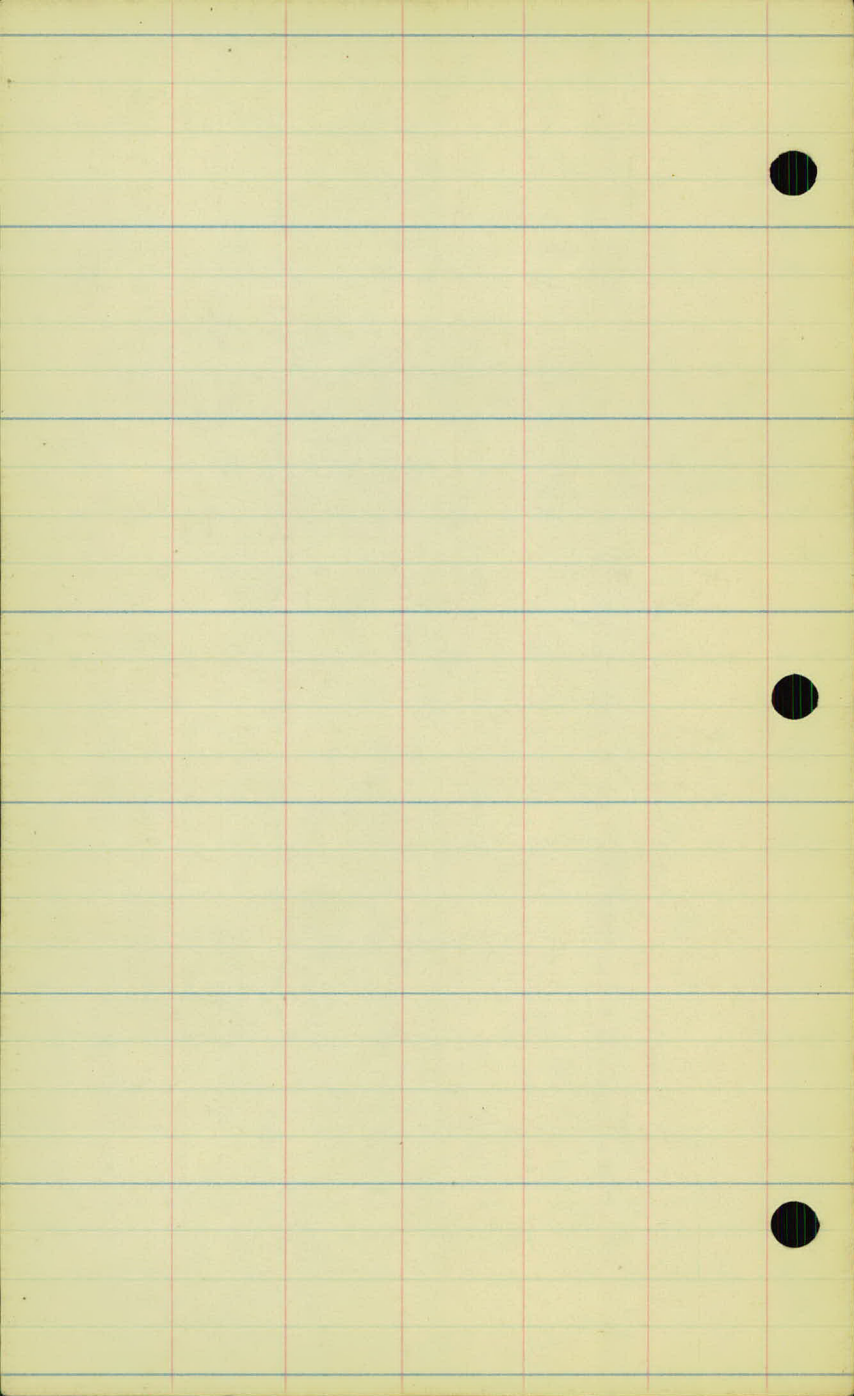
9.2	7.3	7.0	7.6	8.0	7.6	6.9
30	26	.	3	5	30	30

11.0	8.5	7.6	8.2	9.6	9.8	
30	26		1	7	30	

10.8	8.4	7.7	8.5	9.4	9.3	
30	26	.	3	7	30	

8.3	8.8	8.0	7.7	8.6	9.0	
30	28	26		5	30	

6.4	7.8	7.7	8.3	9.4		
30	28		13	30		





8-17-26

## lone St. from Eustisto Carl

	5.84	335.06 <sup>v</sup>		329.22 <sup>v</sup>
0+00			7.0	328.1
+30			6.9	28.2
1			6.1	29.0
+55			5.1	30.0
2			5.6	29.5
+45			5.6	29.5
3			5.0	30.1
+55			5.3	29.8
+85			7.0	328.1

## lone St. from Eustisto Manvel

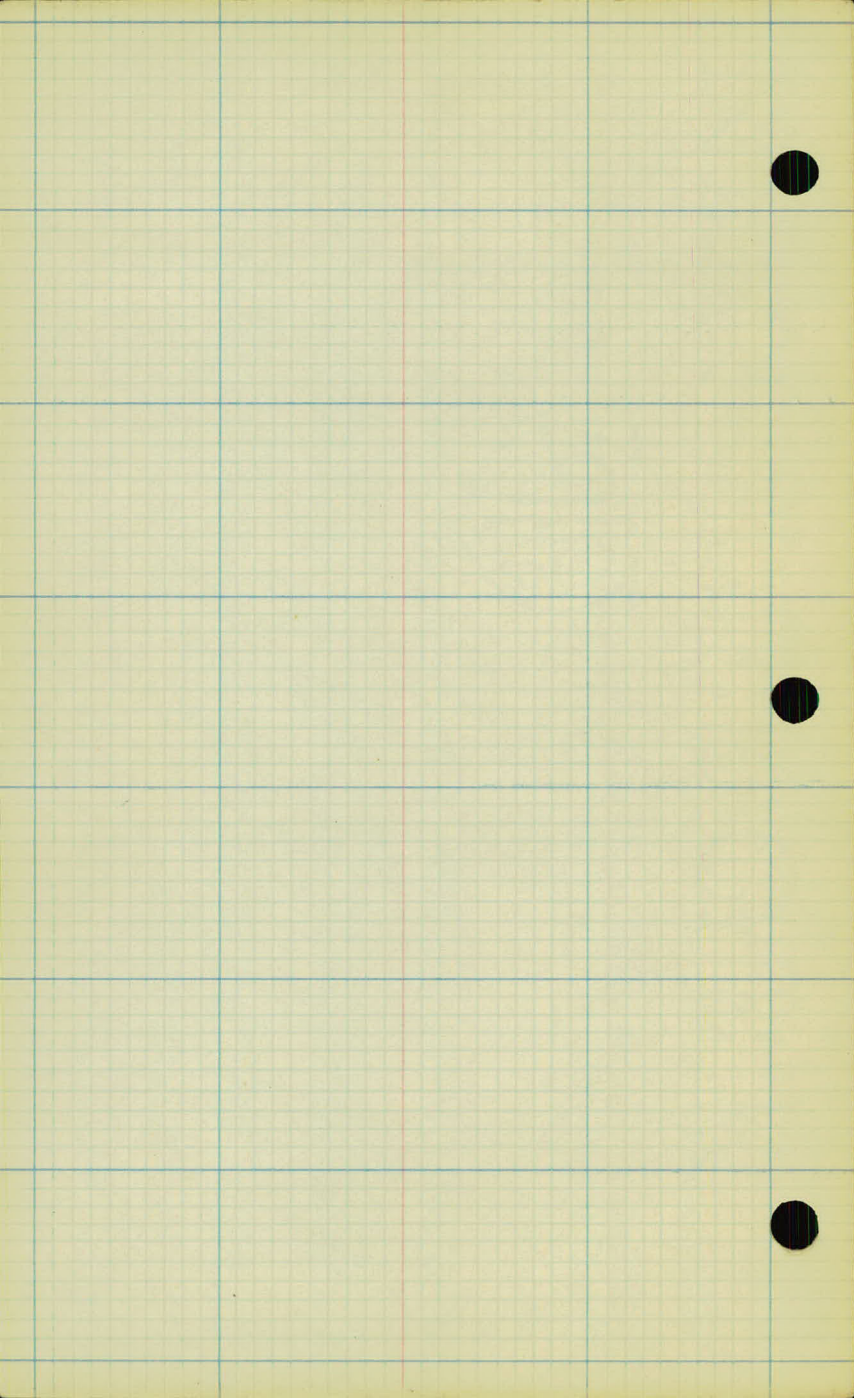
		335.06 <sup>v</sup>		
	4.23	329.6 <sup>v</sup>	9.88	325. <sup>.18</sup> (38)
0+00			1.3	328.1
+30			3.6	25.8
+50			4.3	25.1
1+00			4.8	24.6
+40			4.9	24.5
2			5.9	23.5
3			7.3	22.1
+25			7.9	21.5

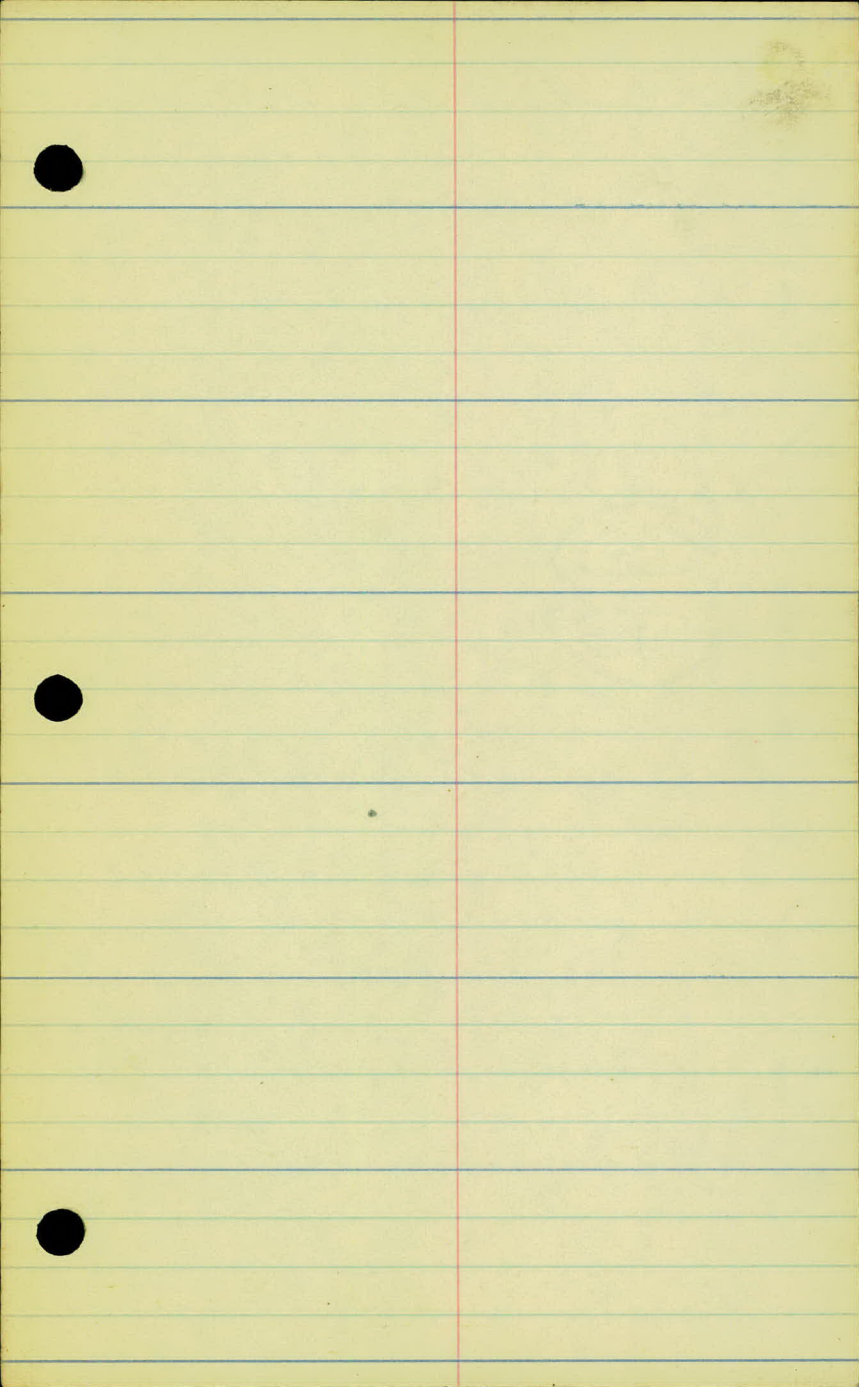
South Coping of Steps No. 200 Eustis  
Eustis

E Carl St. (Approx.)

E Eustis

E Malvern (Approx.)





8-17-26

## Spring St. - Eustis to Cath

	4.51	332.40~		327.89~
0+00			5.5	326.9
+30			5.3	27.1
+80			2.7	29.7
1			2.1	30.3
+20			0.7	31.7
	2.72	334.07~	1.05	331.35~
+55			2.6	31.5
+60			1.5	32.6
2			1.8	32.3
+20			2.3	31.8
+50			4.2	29.9
+85			5.8	28.3
3			8.2	25.9
+25			10.5	23.6
+38			10.1	24.0

## Spring St. Eustis to Malvern

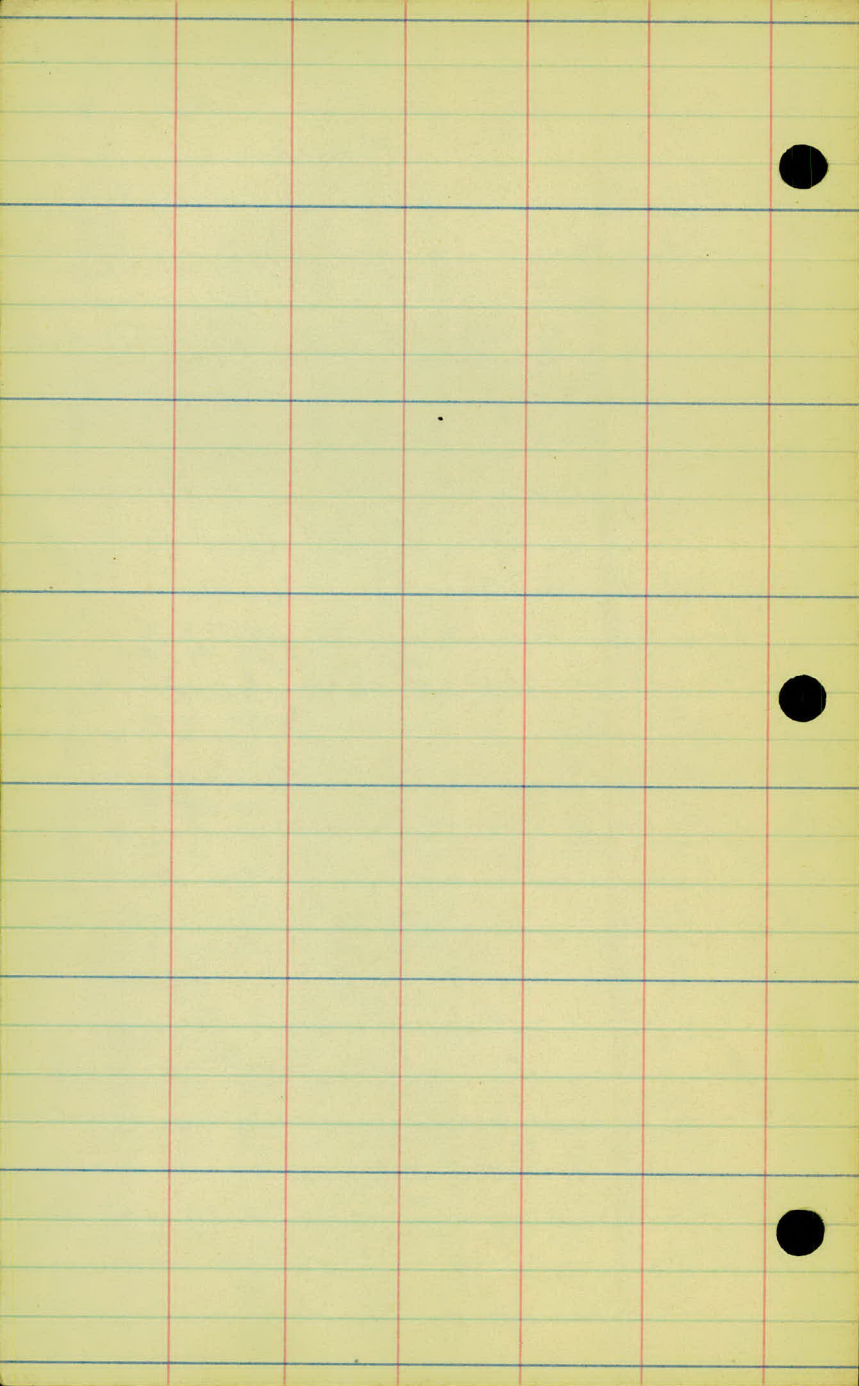
	2.62	330.51~		327.89
0+00			3.4	327.1
+30			4.4	26.1
1			4.7	25.8
2			7.2	23.3
+75			11.3	19.2
3+25			12.0	318.5

N. End Conc. Step of Store N.W. Cor. Eustis  
& Eustis

& Carl (Approx) & Gravel

& Eustis

& Malvern





8-18-26

Larpenteur from Eustis to Carl

	7.31	324.94 <sup>v</sup>		317.63 <sup>v</sup>
0+00			7.5	317.4 <sup>v</sup>
1			5.5	19.4
2			4.0	20.9
+72			3.2	321.7

Larpenteur from Eustis to Malvern

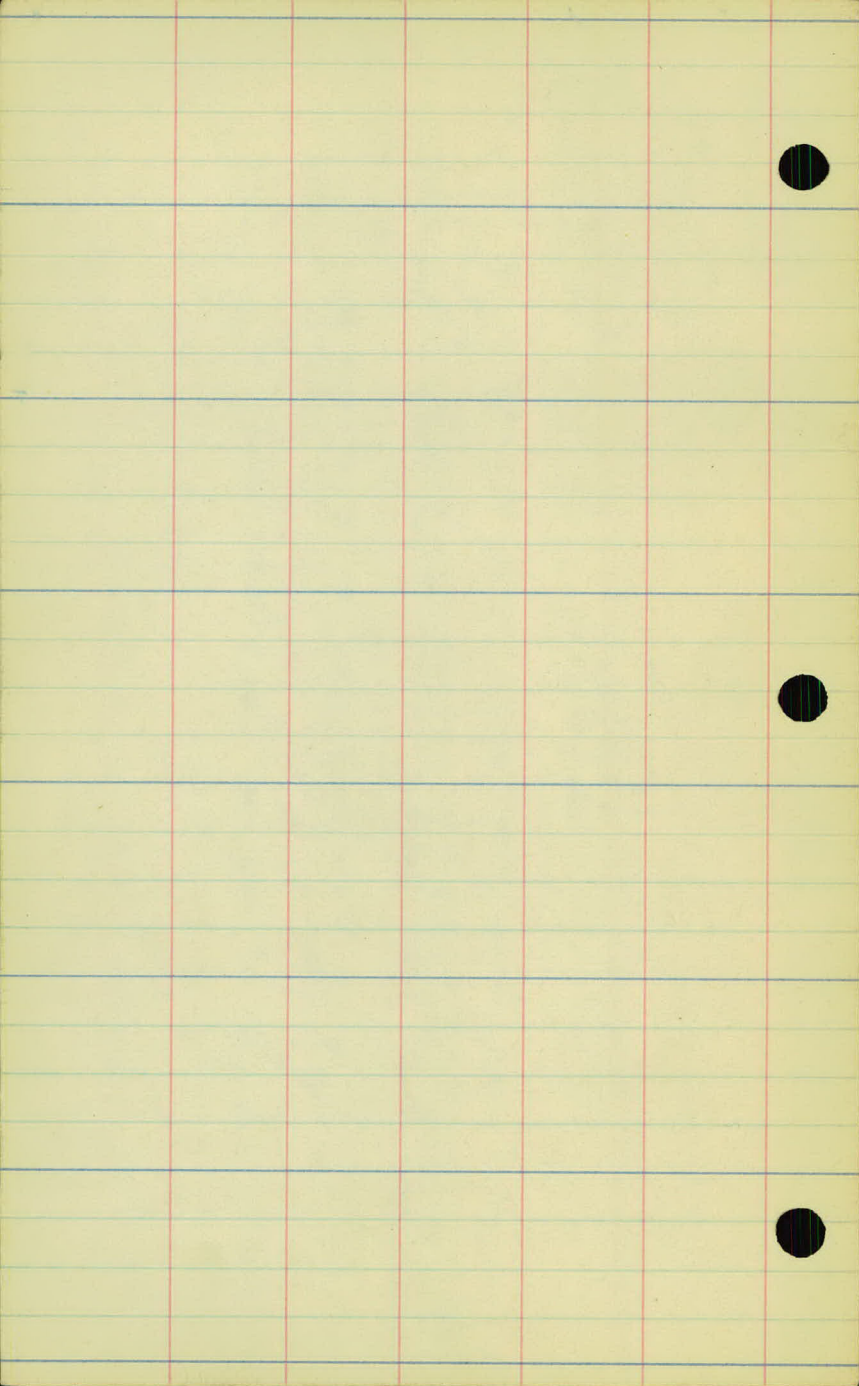
		324.94		
0+00			7.5	17.4
1			10.0	14.9
	2.47	317.37 <sup>v</sup>	10.04	314.90 <sup>v</sup>
2			3.2	14.2
3			8.0	09.4
+20			8.6	08.8

⊕ Eustis

⊕ Carl

⊕ Eustis

⊕ Malvern





8-17-26

## Eustis St. Larpenteur to Golf Grounds

6.48 324.11

317.63

0 + 00		6.7	317.4
1		5.5	18.6
2		4.4	19.7
3		2.7	21.4
	10.32 332.95	1.48	322.63
4		9.1	23.9
5		5.9	27.1
+ 55		4.6	28.4
6		4.5	328.5
+ 59.1		4.7	328.3
7		4.9	28.1
	3.68 332.90	3.73	329.22
8		4.3	28.6
+ 30		4.1	28.8
9		4.6	28.3
10		5.2	27.7
11		5.4	27.5
	6.10 331.78	7.22	325.68
+ 70		4.3	27.5
12		4.7	27.1
13		5.0	26.8
+ 18.2		4.8	327.0
		3.90	327.88

West Side Conc. D.S. - SW Cor. Larpenteur  
& Larpenteur

& lone

South Coping of Steps in front of 400 Eustis - NW Cor. lone

& Spring

No. End of Conc. Step - Stone NW Cor. Spring

331.78

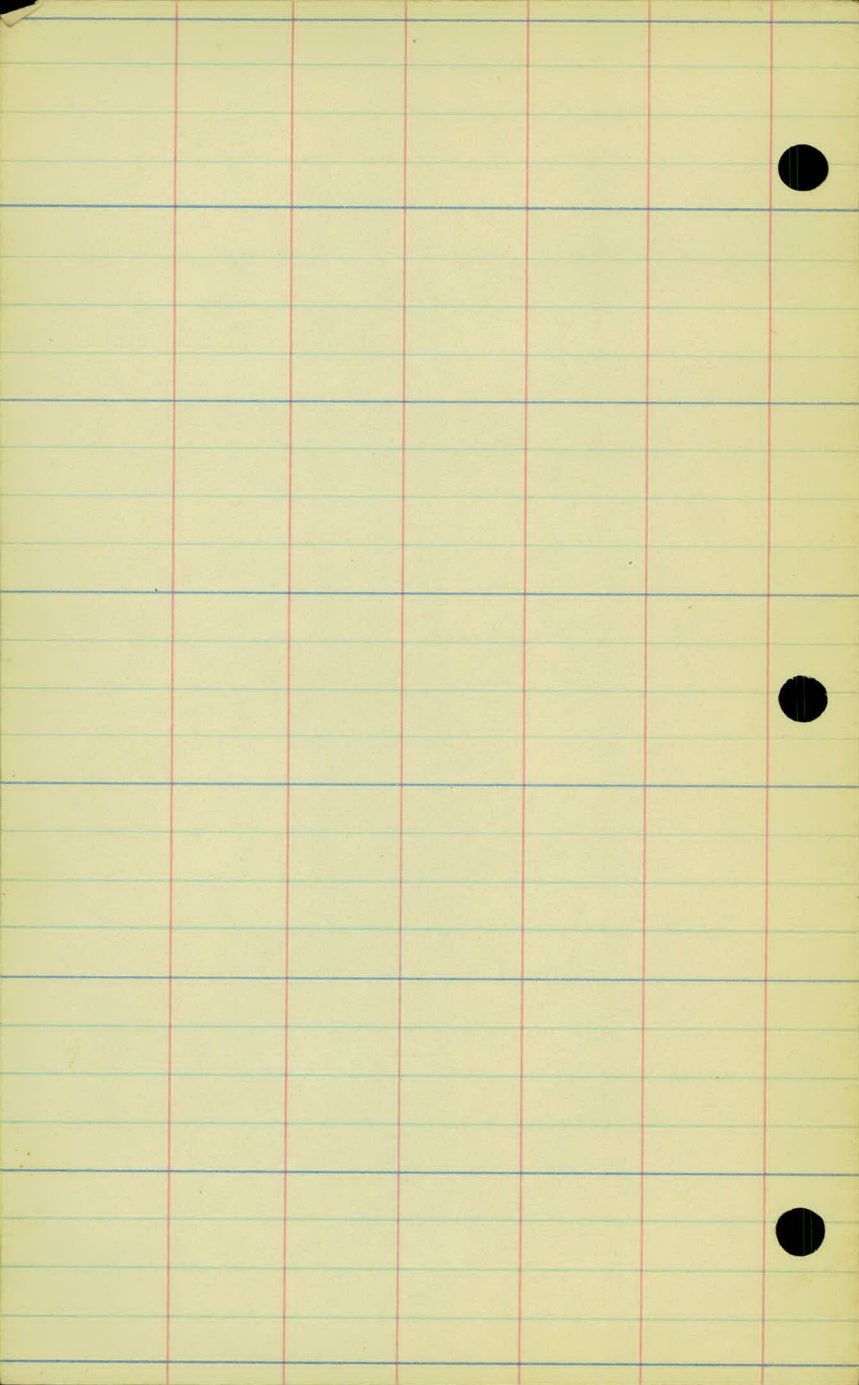
331.87

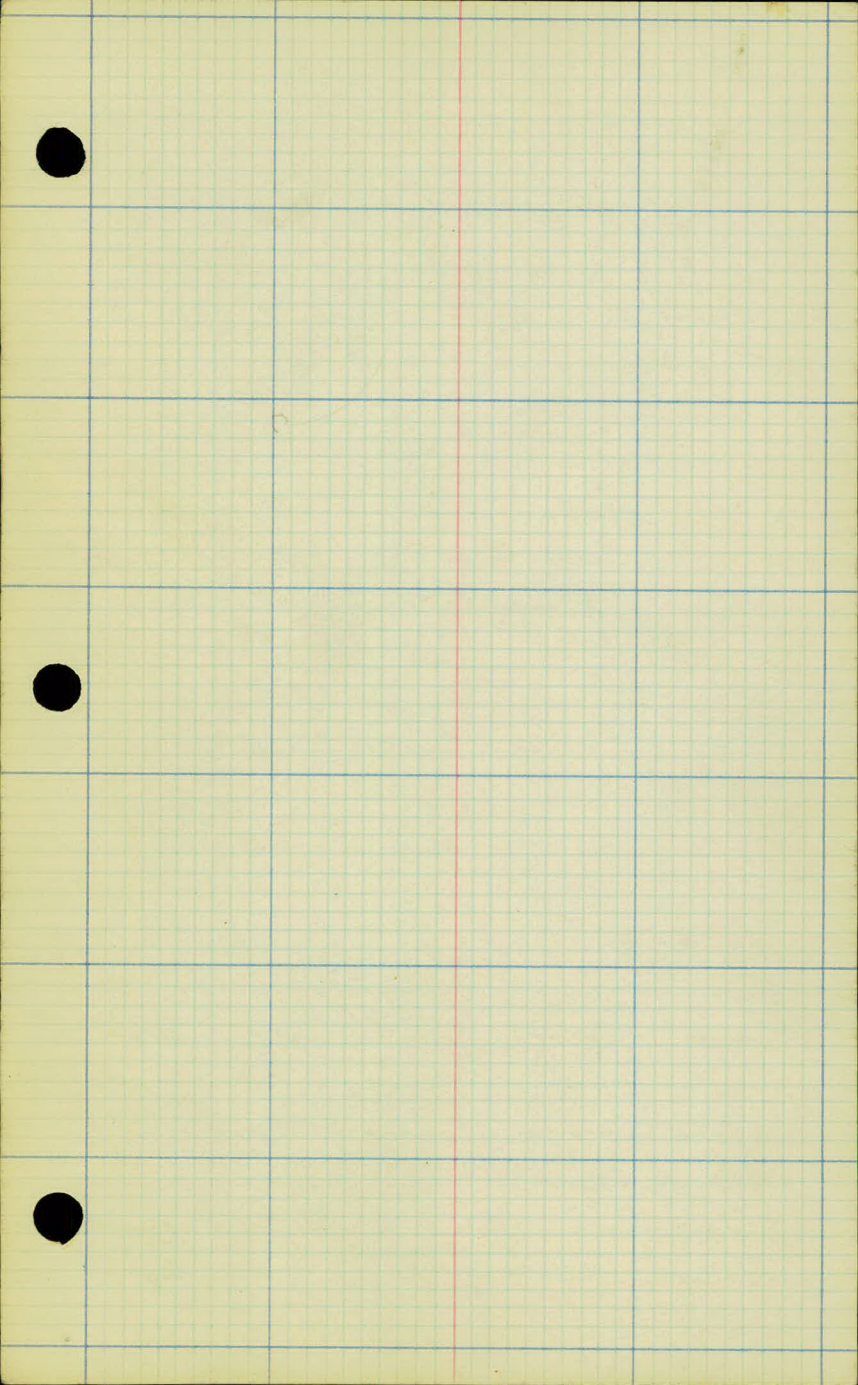
14			6.0	25.8
15			7.7	24.1
16			10.2	21.6
	0.78	<sup>85</sup> 321.94	10.71	321.97
+50			1.5	20.4
17			3.4	18.5
18			5.8	16.1
19			6.7	15.2
+77.3			5.8	316.1
20			5.9	16.0
	2.90	<sup>50</sup> 318.59	6.25	315.60
21			2.9	15.6
22			4.1	14.4
23			5.9	12.6
24			8.1	10.4
25			10.3	08.2
	3.53	<sup>83</sup> 311.92	10.20	308.30
26			5.0	06.8
+36.4			4.8	07.0
			6.60	305.33

⌘ Summer

⌘ Broadway

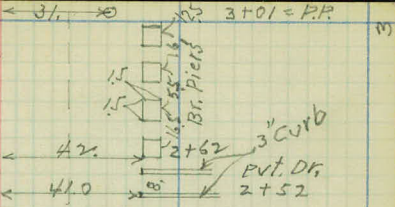
Spike in 10" Oak N.E. Cor Broadway





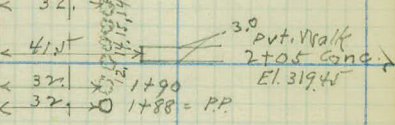
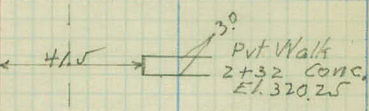
0+00    ≠    Larpenteur

Rt. Walk  
Conc. El. 321.7

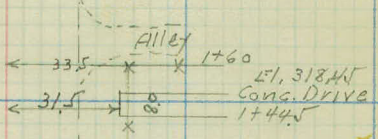


Pvt. Dr.  
2+98

M. Box  
2+16

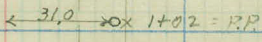


1+80.5 ALLEY



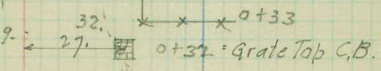
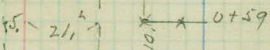
Platted

1+10 = M. Box 090



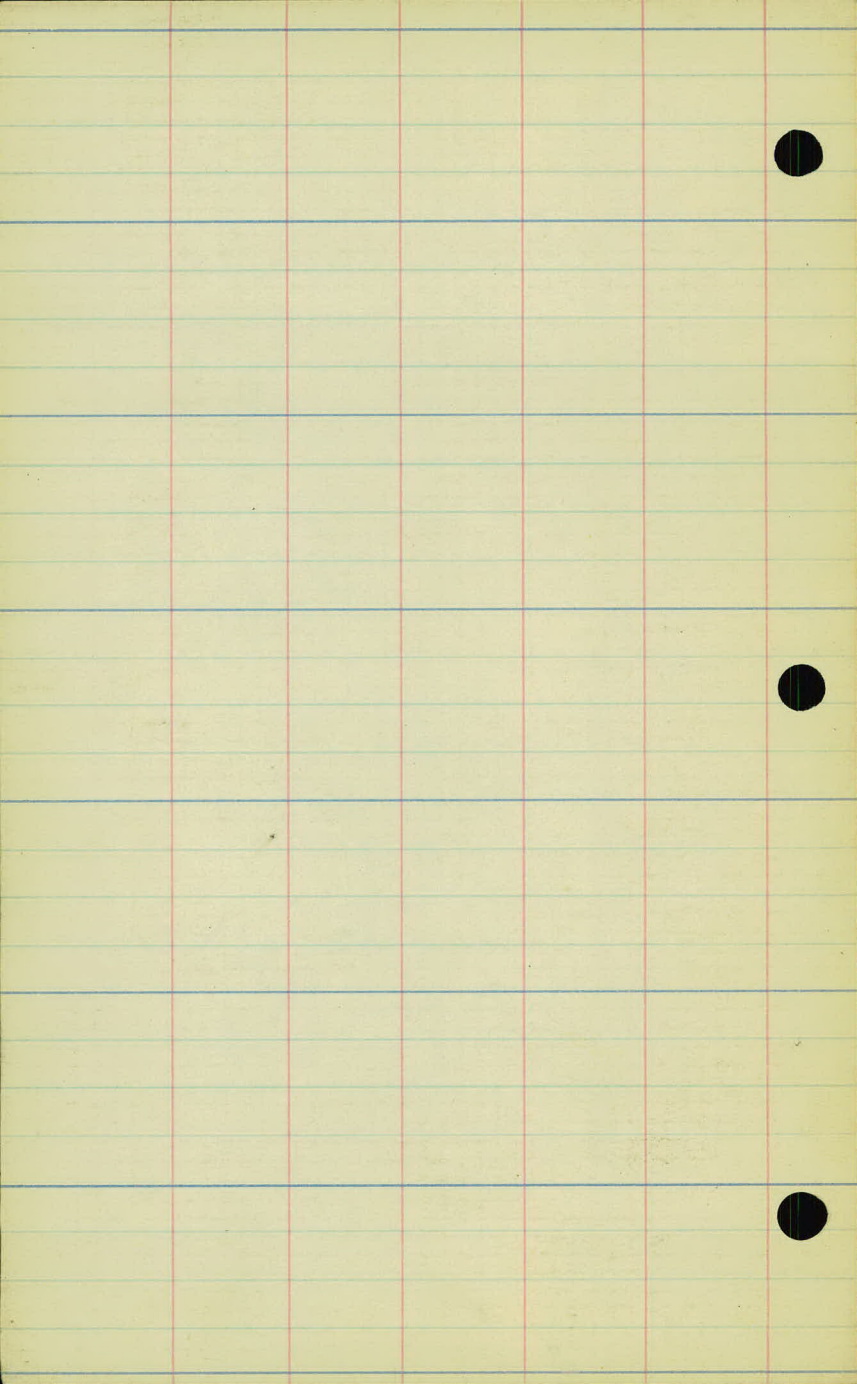
Platted

0+70.5 012  
stop sign



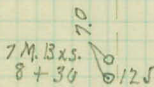
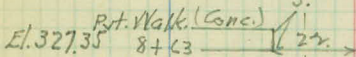
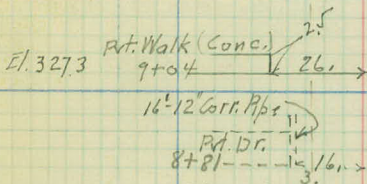
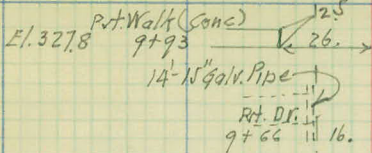
10.10.

18'-12\"/>

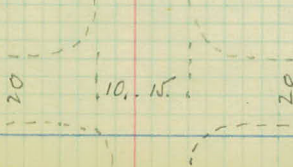
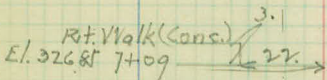
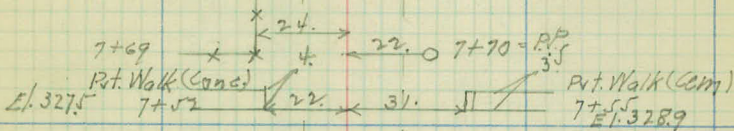




6+59.1 & Ione



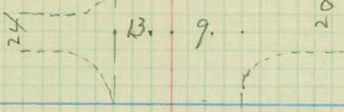
17. 8+11 = School Caution sign



13+18.2  $\notin$  Spring

Conc. Walk + curb →  
13+44.5 < 29.5

27.5 0 13+36 = P.P.



12+83 22.5  
Hedge

< 22.5 0 12+46 = P.P.  
10 Rt. Dr. 12+32

Hedge  
Pvt. Walk  
E/ 325.65 11+41  
Hedge

< 22.1 0 11+26 = P.P.

5 M. BxS.  
11+04 28.0

Rt. Dr. 10+67

16'-12" Corr. Pipe  
Rt. Dr.  
10+07 16.

Pvt. Dr. 10+20  
21.5 0 10+09 = P.P.

13

13

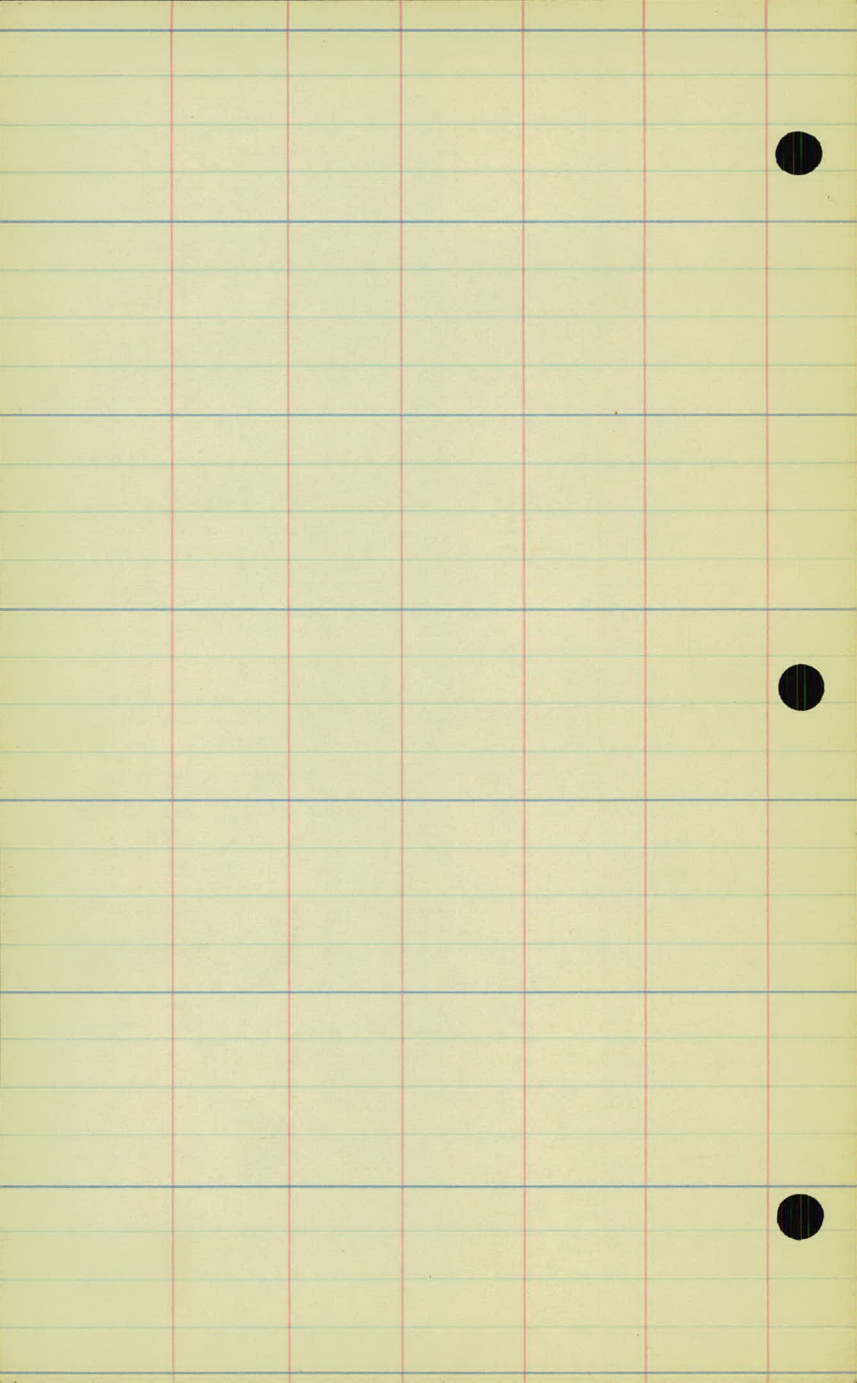
12

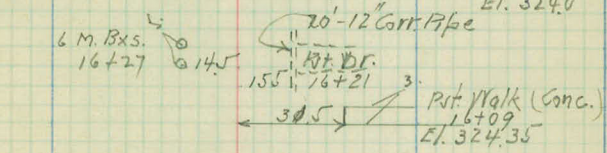
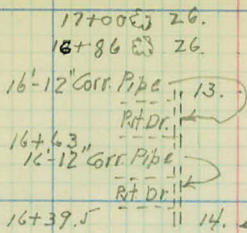
12

11

11

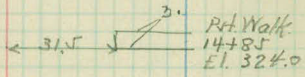
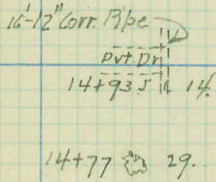
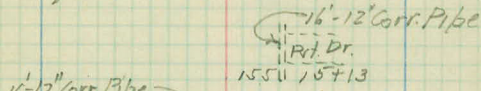
10





22.5.0 15+85 = P.P.

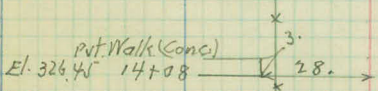
15+45 Hedge 26.5



22.5.0 14+64 = P.P.

4 M. Bxs. 14+40 14.

14+29 x 28.5



13+73 x 29.

El. 326.1  
 Conc. Curb & S.W.

19+77.3 & Summer

20+28 28.  
27.

20+05 19.5  
M.B.

19+75 15.

15.

19+73 = P.P.

School Caution  
19+53 20.

19+58

M.B.  
19+09 18.

19+07 = P.P.

3' Pvt. Walk (Conc.)  
18+52  
El. 316.8  
← 32. →

M.B.  
18+41 17.

18+24 = P.P.

3' Pvt. Walk (Conc.)  
18+06  
El. 317.4  
← 31. →

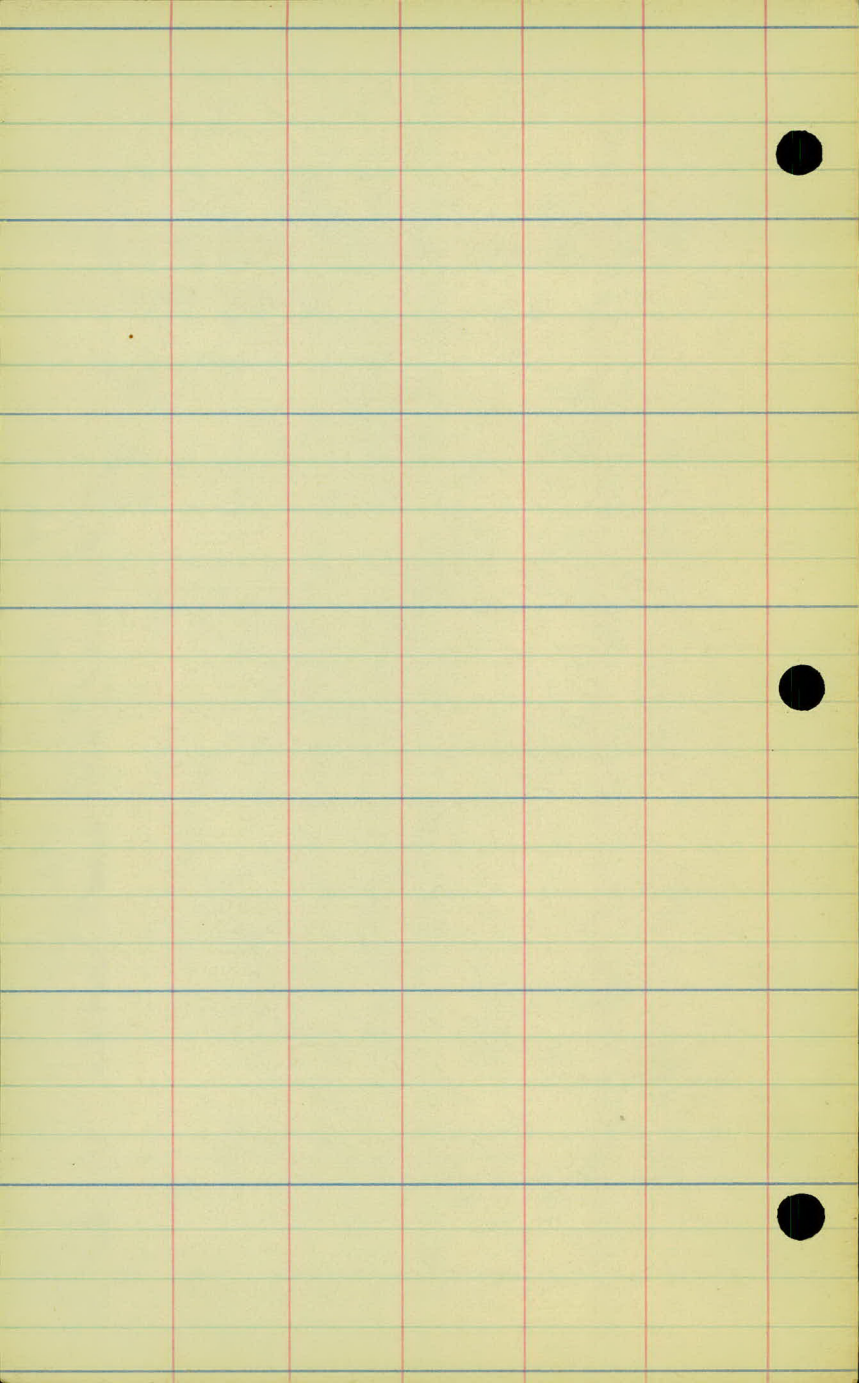
Pvt. Driv.  
17+56

16'-12" Gr. P.P.

17+42 30.

Pvt. Dr.  
17+36

17+10 30.



16'-12" Corr. Pipe  
Alt. P.H. Dr.  
16.11 23+75  
25.



29.5 23+13



22.50 22+50 = P.P.

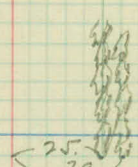
22+37 29.5



Heads  
Heads

25. 21+44  
29.

21+31 26.



22.50 20+97 = P.P.

24

23

22

21

21

26+36.4  $\neq$  Broadway

$26+65.9 \times$   $29.5$   $18.70$   $26+69.9 = P.P.$   
 $\frac{46.18 \text{ Gr. Area}}{74}$   $26+522$

22. 5.

$26+11$   $\frac{48.18 \text{ Gr. Area}}{18.7}$   
 $26+00 \times$   $26.0$   $26.0$   $26+08 = F.P.$   
 $29.$

$25+25 \times$   $30.$

$26.$   $25+55$

$20.$   $25+20$

Hedge  
Hedge  
Hedge

$23.5$   $24+06$   
 $35.$   $24+00$

$27.$   $23+90 = \text{Hedge} + P.P.$   
 $22.5$

26

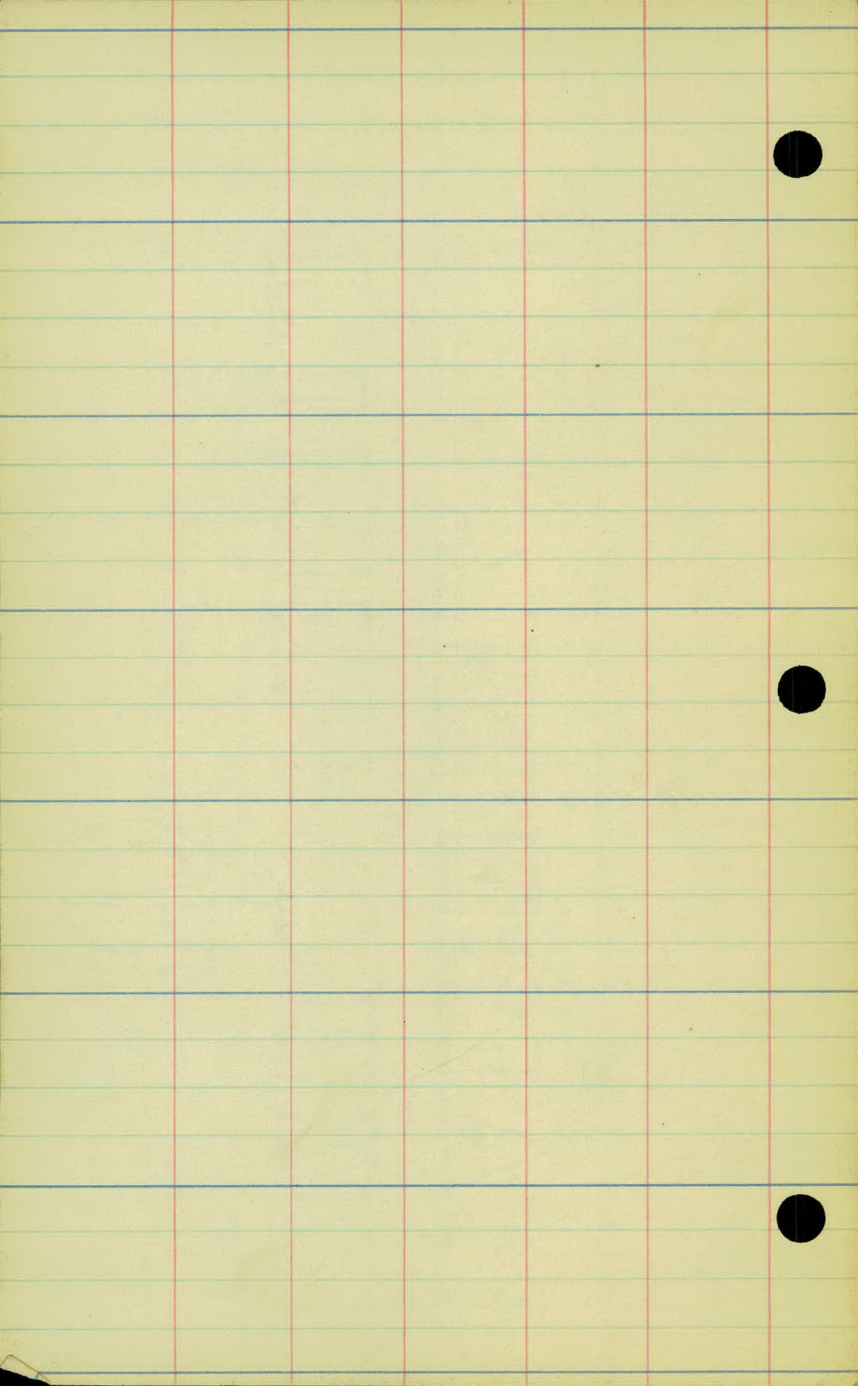
24

27

26

25

24



Timber

30

30

15.80 29+85 = P.P.



29+46



29+14  
Rt. Dr.  
29+05

30.3

11.30 29+245 = T.P.

29

29

17.7 28+28 = P.P.

28

28

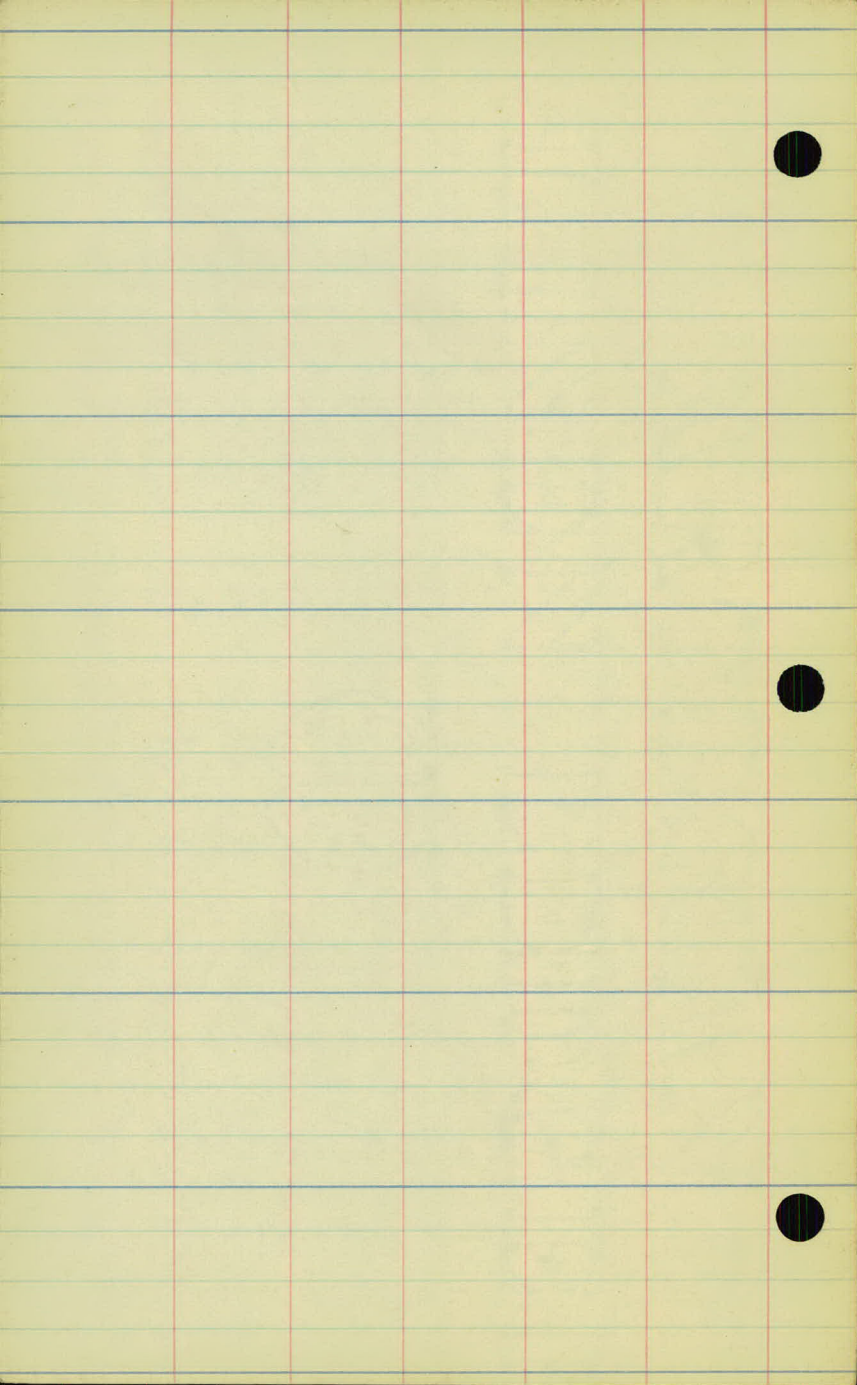
12.7 27+699 = T.P.

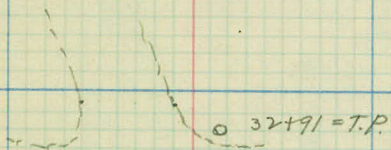
27+527 \* 30.



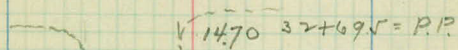
27

27



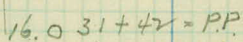


33



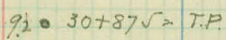
32

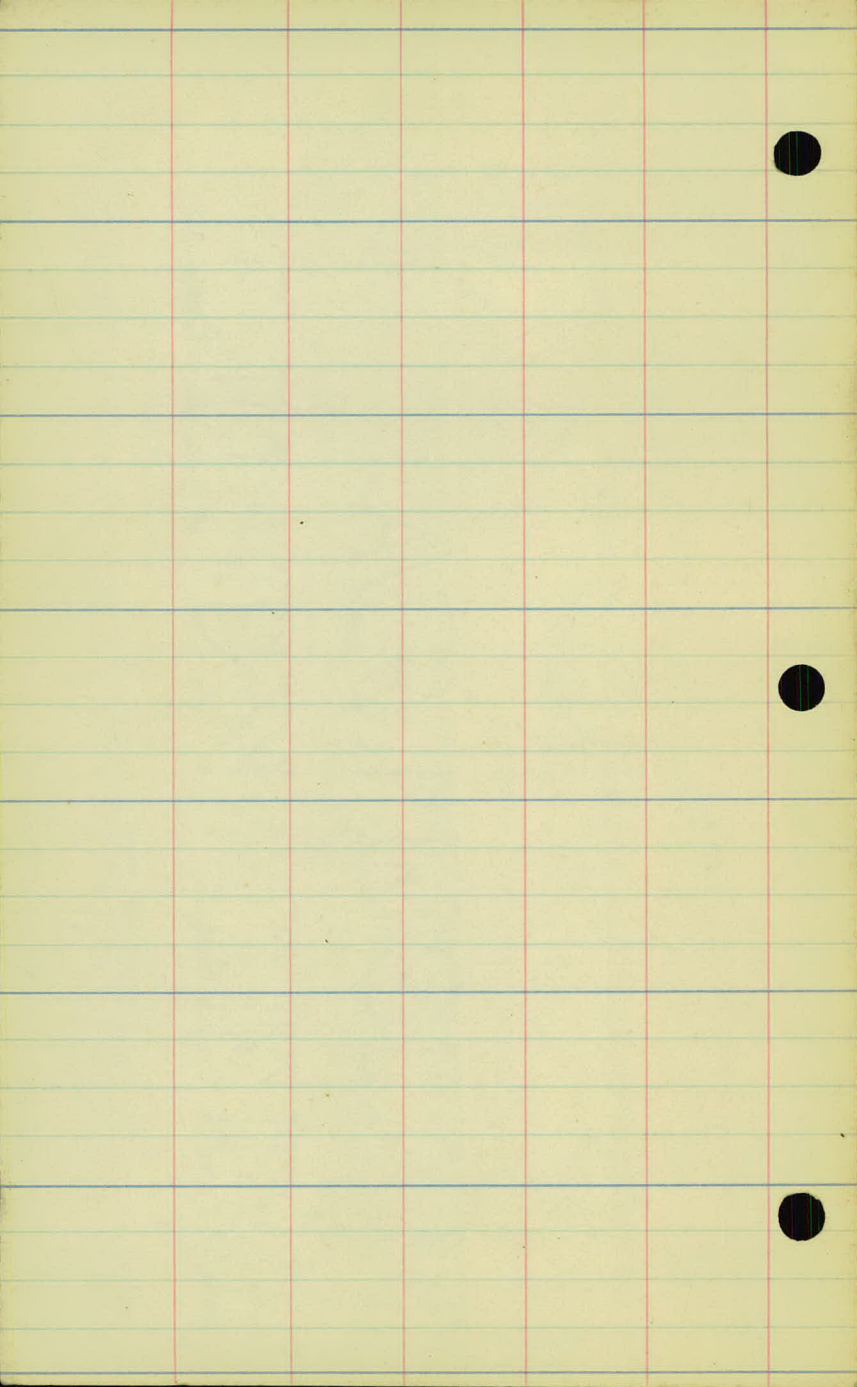
32



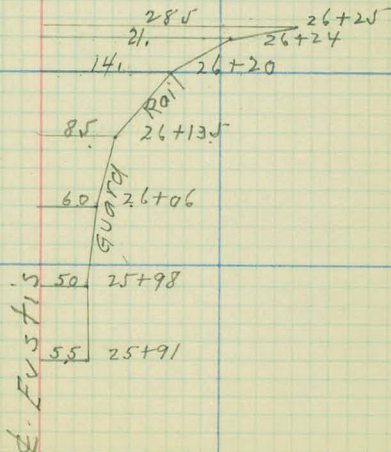
31

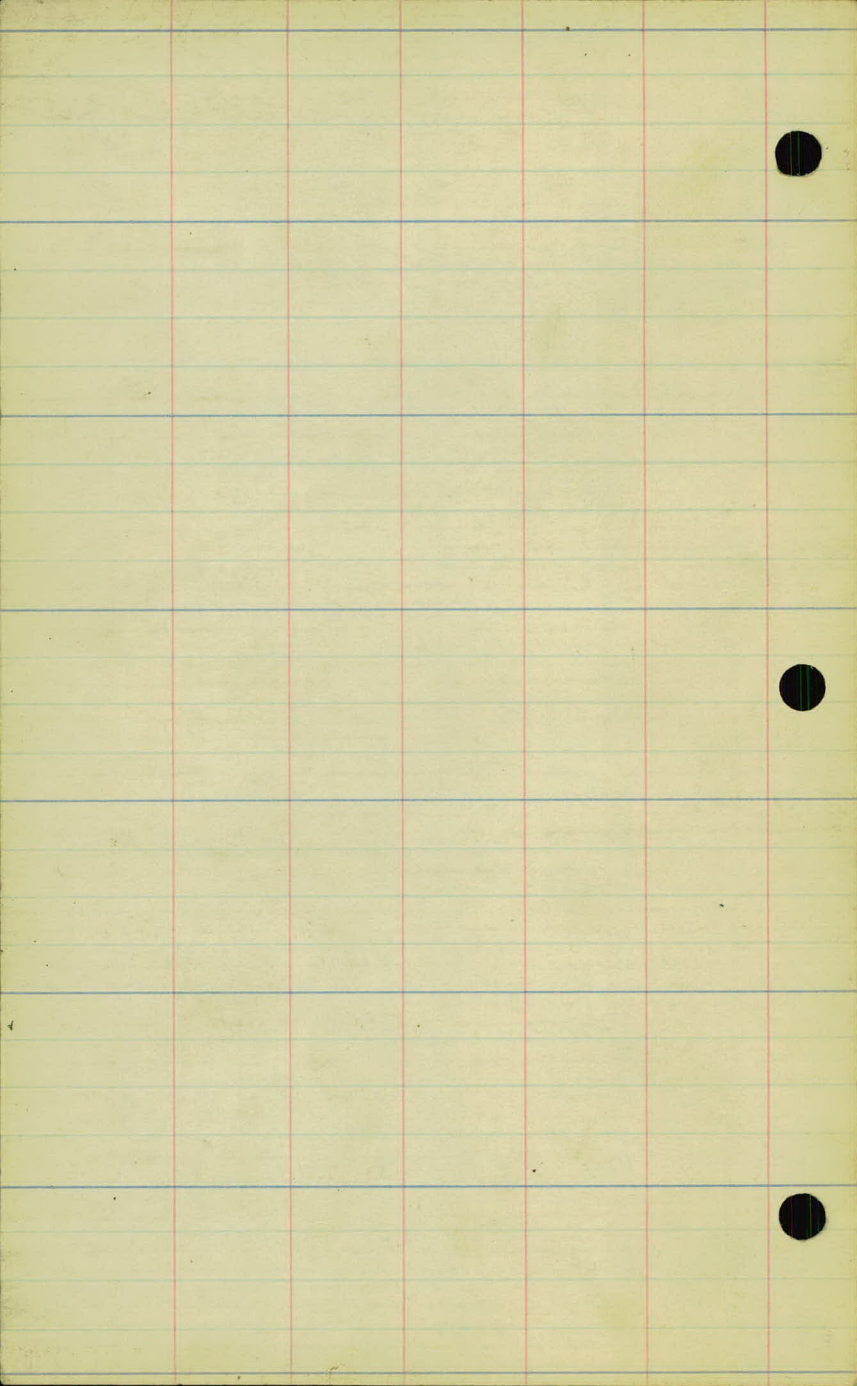
31





Broadway





EUSTIS STREET

Proj. 27-64

Plans in hand inspection. 5-6-27

C.R.V.K.  
P.R.B.

✓ 0+00 - Rt. - Leave culv. & catch basin.

✓ 4+98 Rt. - Remove.

✓ 5 to 7 - Gr. 8T.

6+41.5 - Remove & rep. & extend. <sup>Conc. catch basin.</sup> Pipe to gutter on R<sup>t</sup>.

✓ 7 to 9 - Cl. 1T. Gr. 9T.

✓ 8+81 - Lt. Remove - 12" X 14' C.M.

✓ 9+60 - Lt. Remove - 12" X 14' C.M.

✓ 10+57 - Lt. " 12" X 16' C.M.

✓ 10 to 12+50 - Cl. 2T. Gr. 9T.

✓ Valley gutter on R<sup>t</sup>. of 13+18.

✓ 13 to 15 - Gr. 4T.

✓ 15+00 E. Remove culv.

✓ 15+25 - Rt. " "

✓ 16+31 - Lt. " "

✓ 16+48 - Lt. " "

✓ 16+71 - Lt. " "

✓ 17+45 - Rt. Remove 12" X 12' C.M.

✓ 20+00 to 23+50 - Cl. 26T. Gr. 36T.

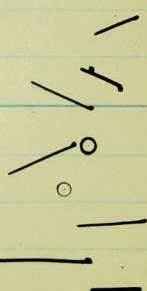
✓ 23+83 Rt. - Remove.

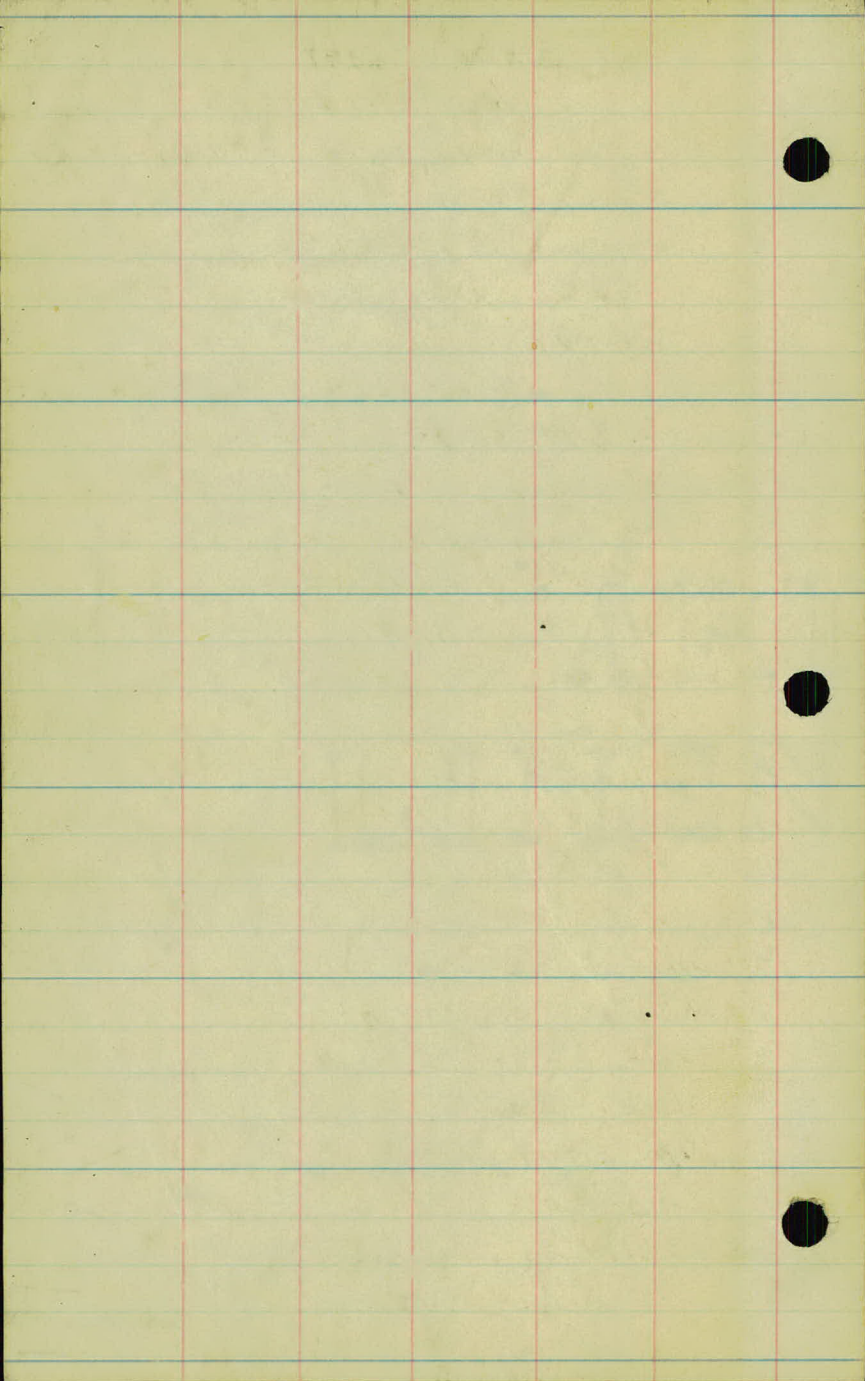
✓ 26+11 - Extend

✓ 26+52 - " "

✓ 26+11 - Rt. Remove 56' G.R.

✓ 29 to 32 - Cl. & Gr. 12T.

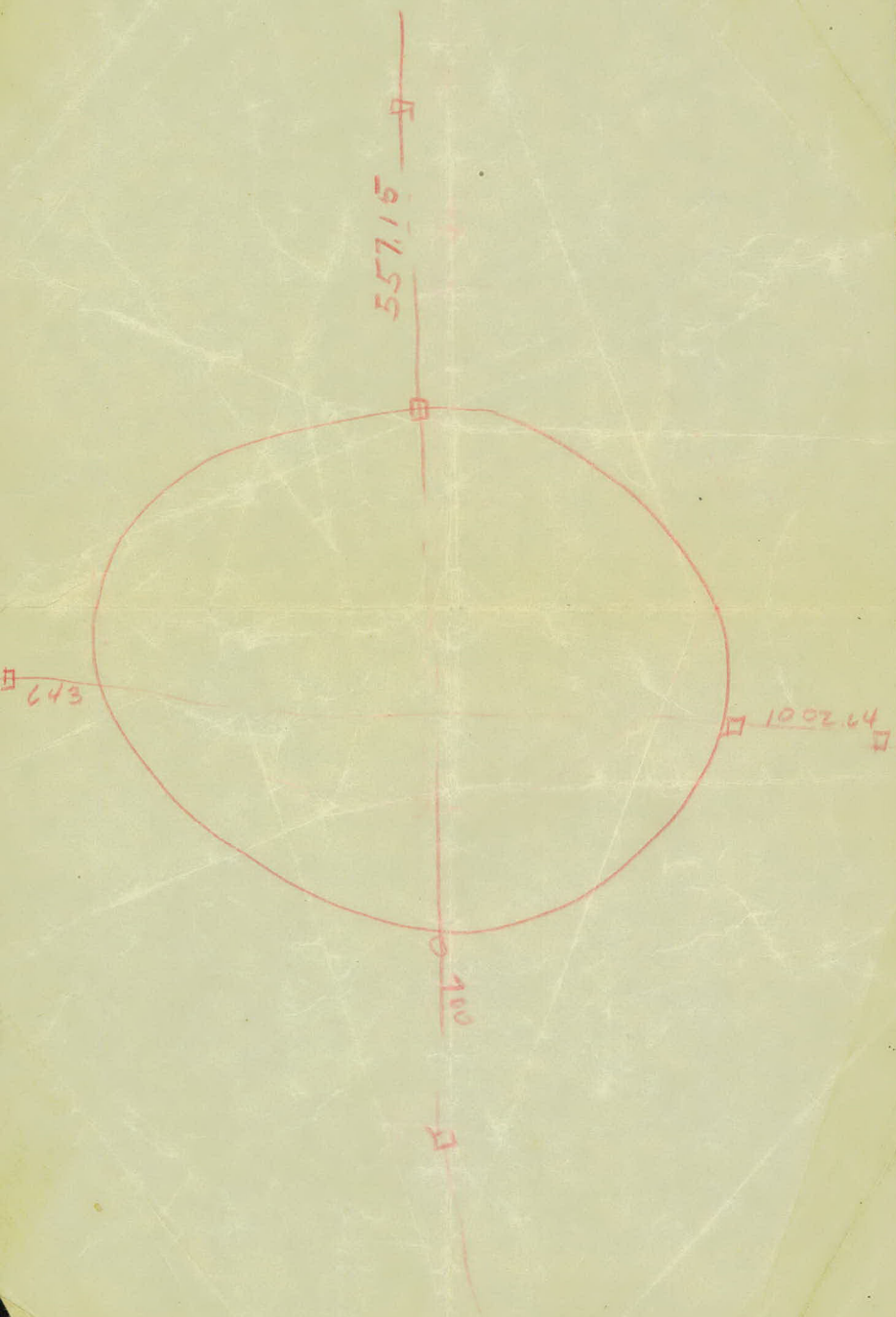




90.1453  
26 23.300  
2743+953

26 139.3  
80145.3  
1074283

654321  
789101112  
13141516171819  
2021222324  
252627282930  
313233343536



Replaced Bud Spikes

500 NEER =

with wood or large trees

298  
43

75.10

62.66  
31.33  
31.33

35.22  
32.66  
77.88



# St. Paul Corrugating Co.

ST. PAUL, MINN.

Sheet Metal Products

IF YOU NEED THESE  
YOU NEED US

### Culverts

"Gohi" (C. B. Pure Iron)

"USS" Pure Iron

"USS" Copper Steel

"K.C.B." Copper Steel

Corrugated Cattle Passes

Corrugated Well Curbing

Anti-Washout Strip

Ridge Roll

Hip Shingles

Metal Valleys

Eaves Trough

Conductor Pipe

Fittings

Gutters

Building Corners

Metal Lath

Corner Beads

Metal Roofings (All Styles)

Metal Sidings

"Gohi" C. B. Pure Iron  
Sheets

"Copper Alloy" Steel Sheets

Galvanized Sheets

Black Sheets

Skylights

Ventilators

Steel Ceilings

Galvanizing (Hot Dip)

Steel Roof Decking

Lux-Right Metal Arowalls

*ctr. sec. 13 M.V. ok 6-11-40  
Found Iron*

*N 1/4 Cor sec. 17 Rose ok.  
6-11-40*

*W. N. + S. M.C. sec. 13 Gorse  
Rose East. 13 in*

*2 on County Rd. E.*

*M.C. N of E 1/4 Cor sec. 33 M.V.*

*M.C. S. of E 1/4 Cor sec. 2 - Rose  
check. ok 6-11-40*

*M.C. S. of N 1/4 Cor sec. 1 Rose,  
ok Found 6-13-40*

## HARRY C. NORD

Sales Representative

PHONES: RIVERVIEW 3703, 3704, 3705, and NESTOR 2255

St. Paul Contracting Co.  
ST. PAUL, MINN.  
Sheet Metal Products

Lot 7

18.0  
5  
190.0

IF YOU NEED THESE  
YOU NEED US

Sheet Metal Work  
Copper  
Galvanized  
Aluminum  
Stainless Steel  
Flashing  
Roofing  
Siding  
Ductwork  
Exhaust Systems  
HVAC Systems  
Auto Parts  
Truck Parts  
Agricultural Machinery  
Industrial Machinery  
Aerospace Components  
Automotive Components  
Marine Components  
Aircraft Components  
Spacecraft Components  
Defense Components  
Medical Components  
Aerospace Components  
Automotive Components  
Marine Components  
Aircraft Components  
Spacecraft Components  
Defense Components  
Medical Components

HARRY C. NORD

SALES REPRESENTATIVE  
PHONE: (612) 222-1111

U 2501