

SECTION TIES

ANOKA CUTOFF

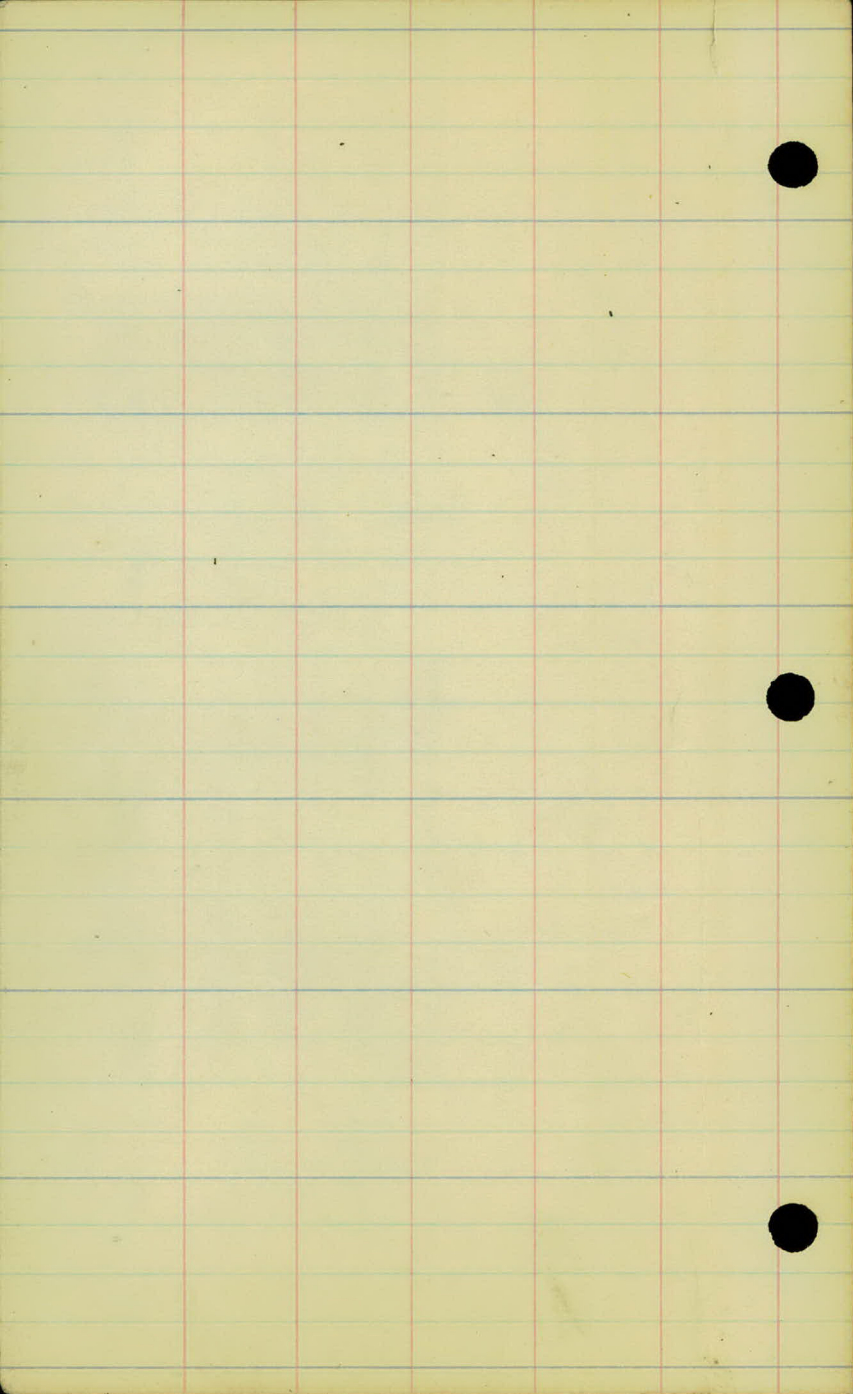
RAMSEY COUNTY PROJ.-26-62

Road %c N^o 93

FILE N^o 5

SECTION TIES

ST. PAUL-ANOKA



379

£ H LINE

378

377

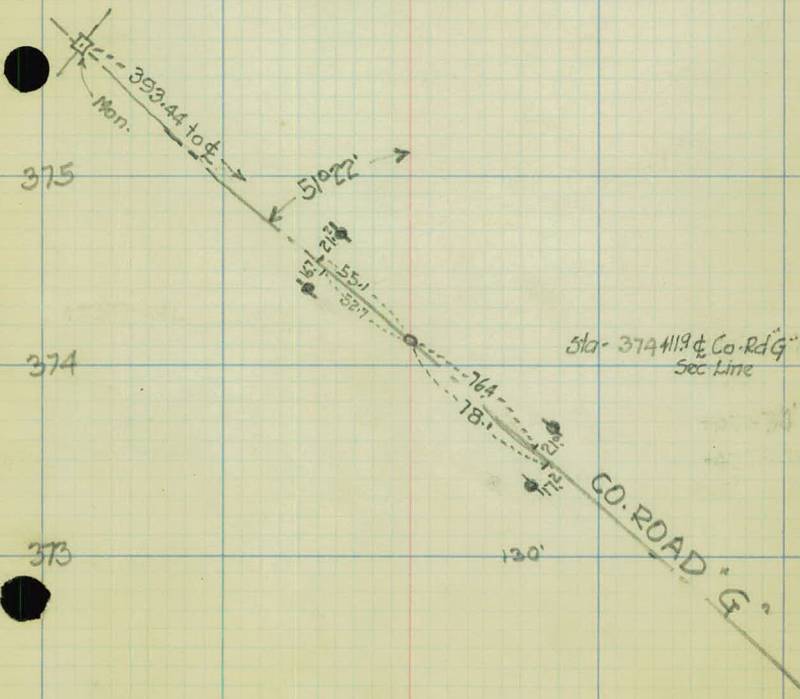
376

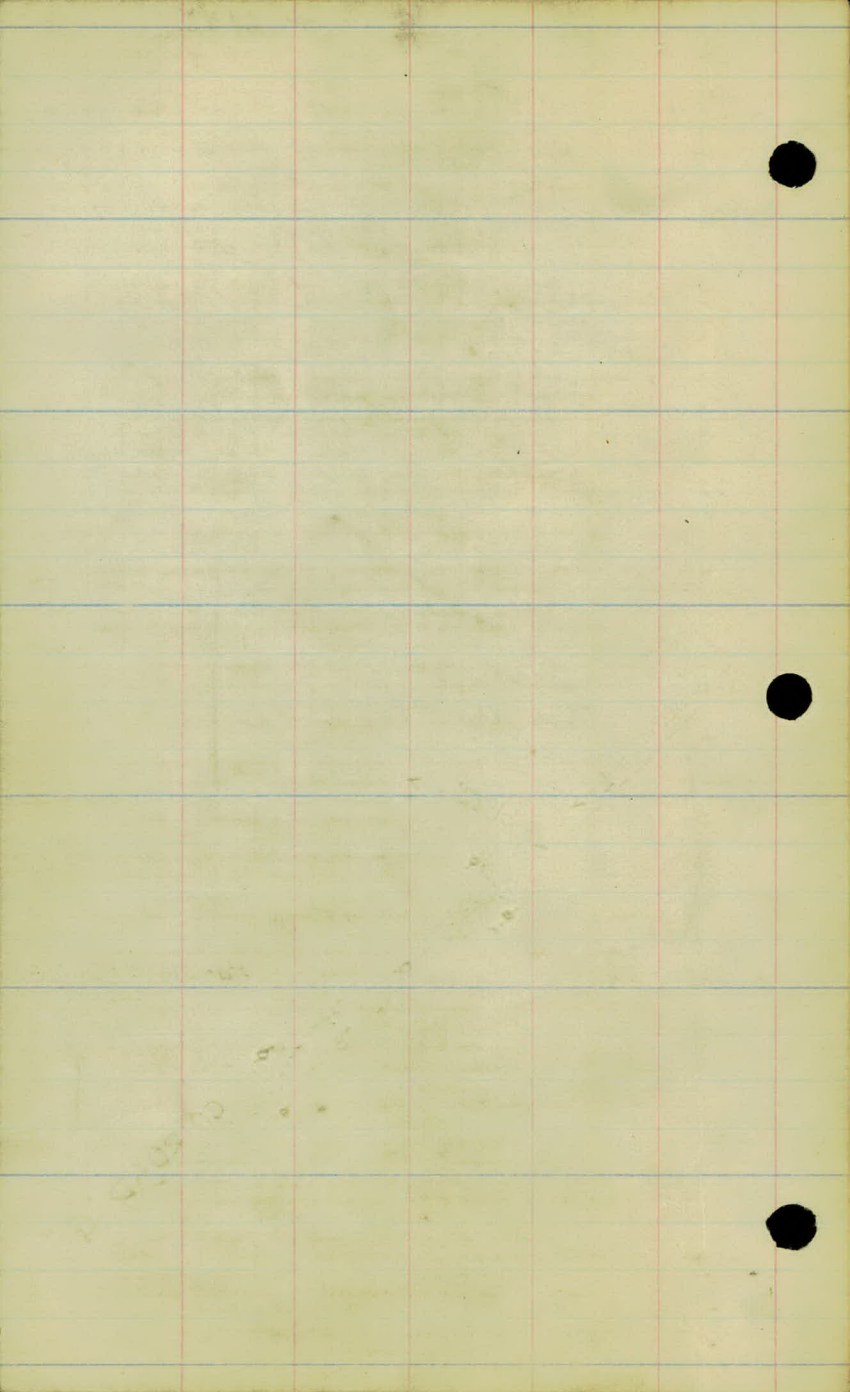
375

374

373

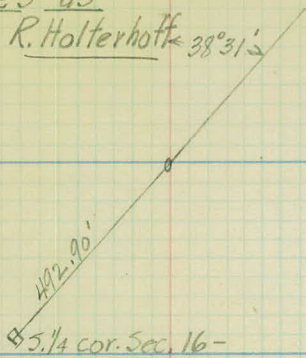
372





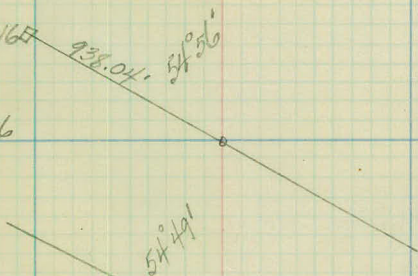
Section ties as
copied from R. Holterhoff 38°31'2"

380+42.9



W. 1/4 cor. Sec. 16

407+94.6



440+25.5

466+41.0

49°19'

721.3

893.7'

SE. cor. Sec. 8

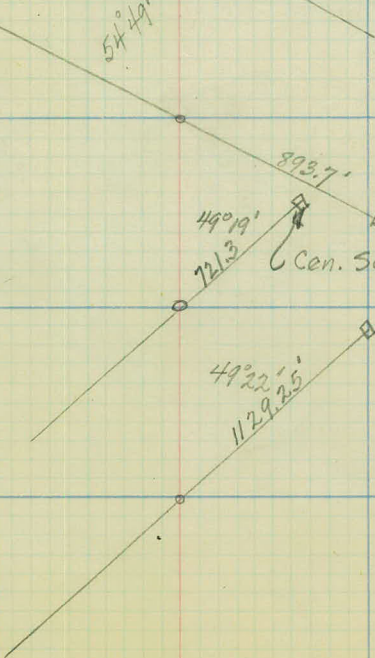
Cent. Sec. 8

N.W. cor. Sec. 8

49°22'1"

1129.25'

501+16.85



535+95.0

49°26'

1179.70

□ S. 1/4 cor. Sec. 6

W. 1/4 cor. Sec. 6

41°33'

513.4'

558+07.6

564+77.6

444.0

50°02'

□ W. 1/4 Sec. 6

3490.3
3049.9
440.4

So 1/4 Sec. 32

T.P. 54.95

57.10 T.P.

1000.0

604+19.4
"H" line

CENTRAL AVE

89° 53' 2017.0

6" H LINE

900

67.0

6

50° 35'

3049.9

30" oak

67.25

H 564+71.5

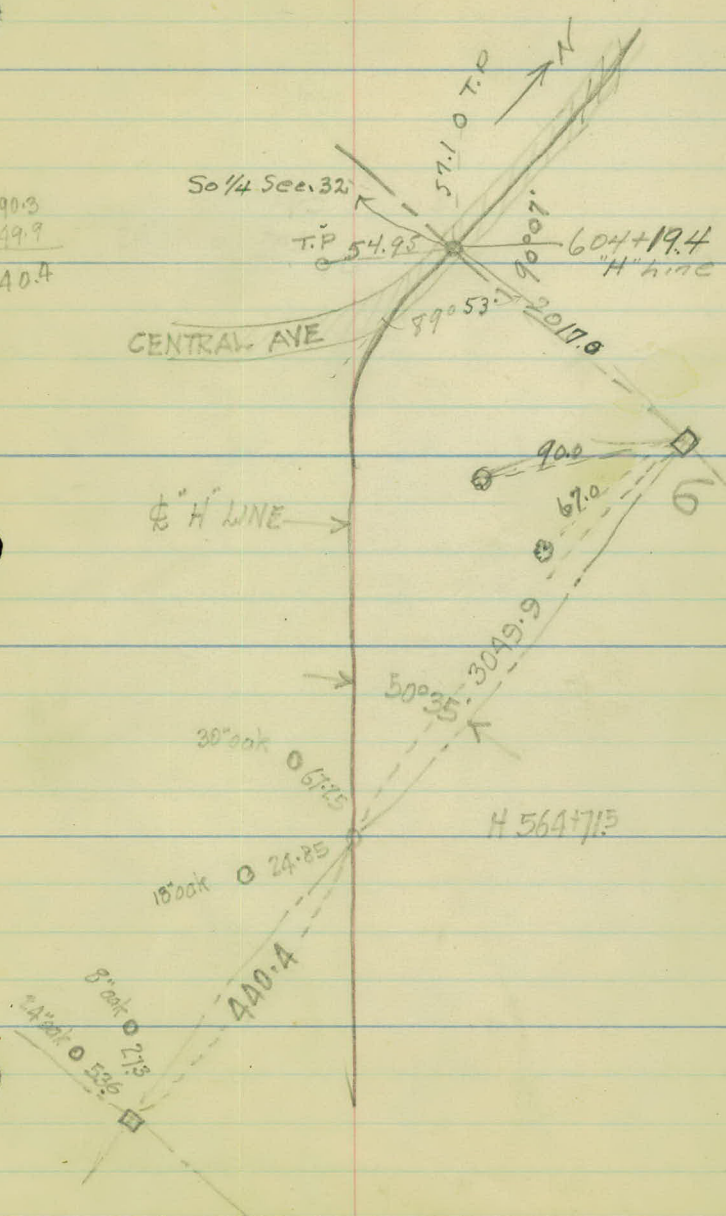
18" oak

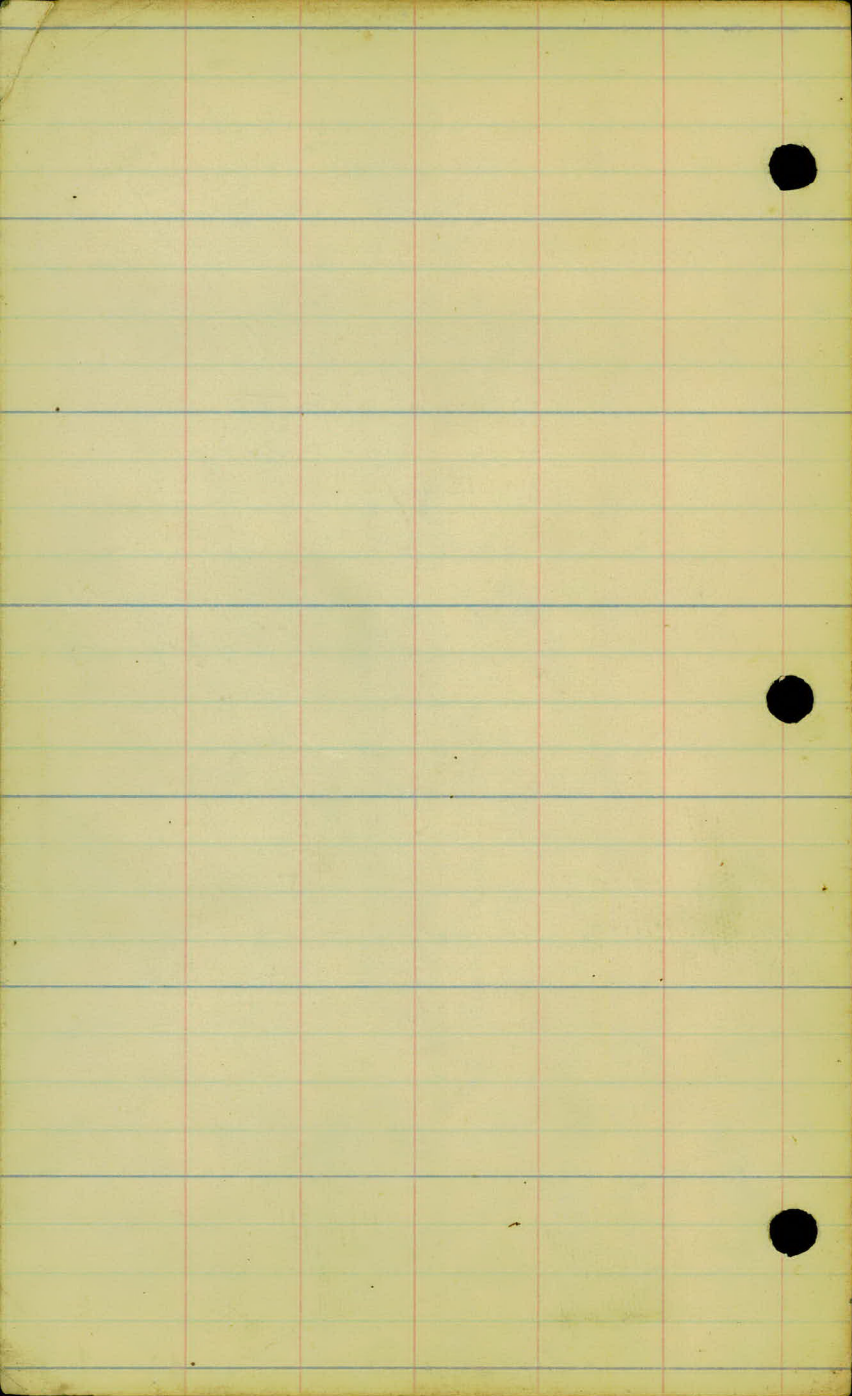
24.85

440.4

8" oak 27.5
14" oak 53.6

14" oak 53.6





Section Ties.

W 1/4 Cor. Sec. 31
Established from
State Notes.

F.P. 71.5

"H" line

N →

P.I. 706+00

394.7

P.O.T. 681+85.7
Ctr. Sec. 31
Iron. Pin, found.

□

4" H' line

T.P. 653.2

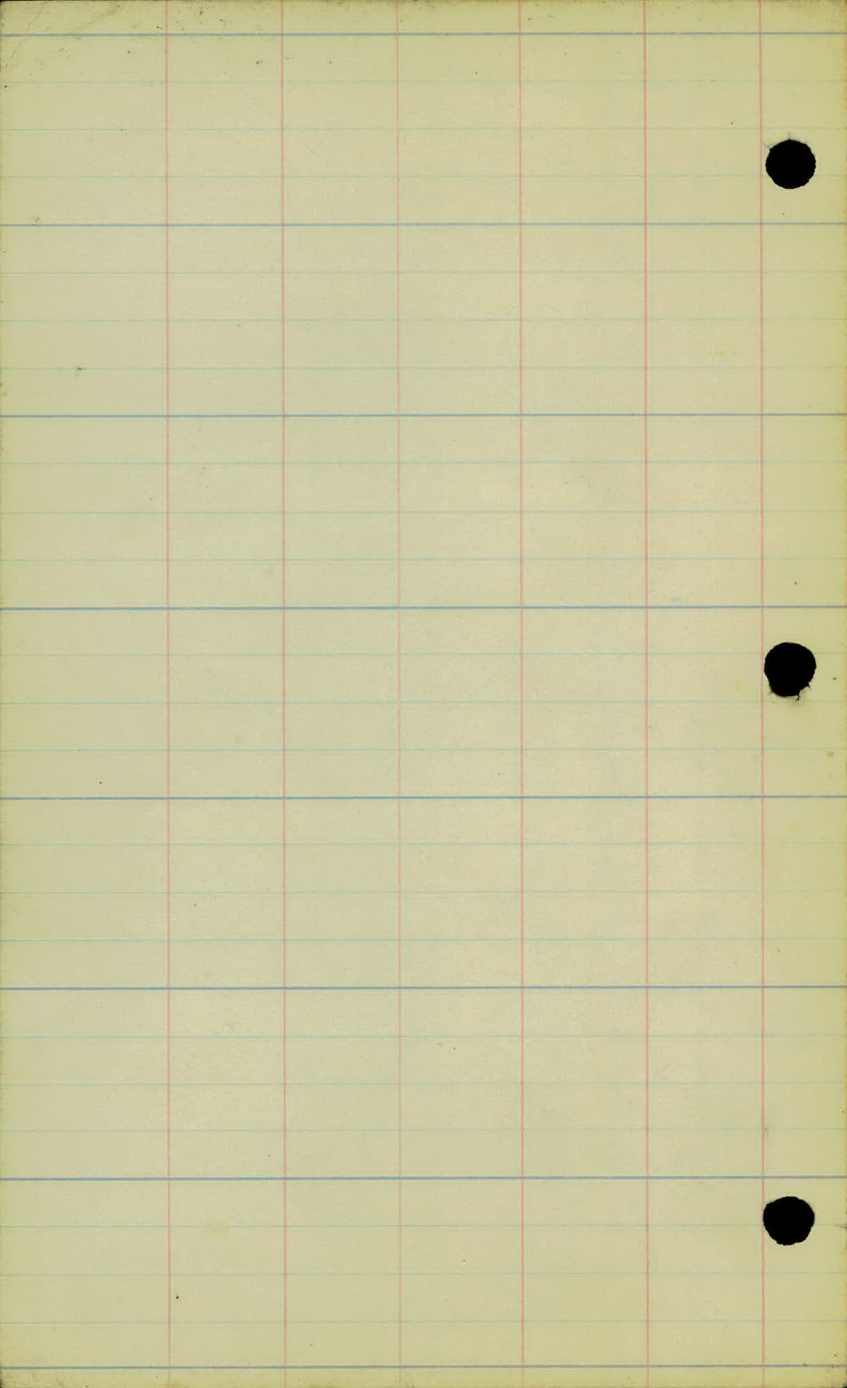
60.9 10"

N →

central. Ave.

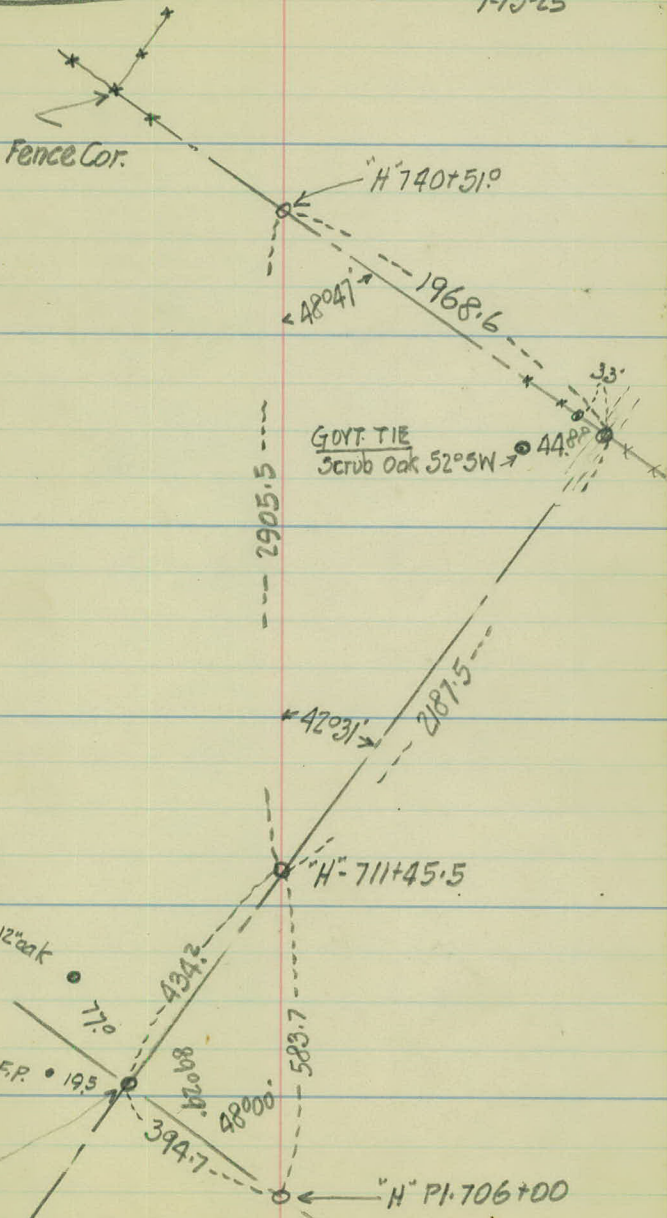
P.I. 630+58.1

Ctr. Sec. 32
Established from
state. Notes.

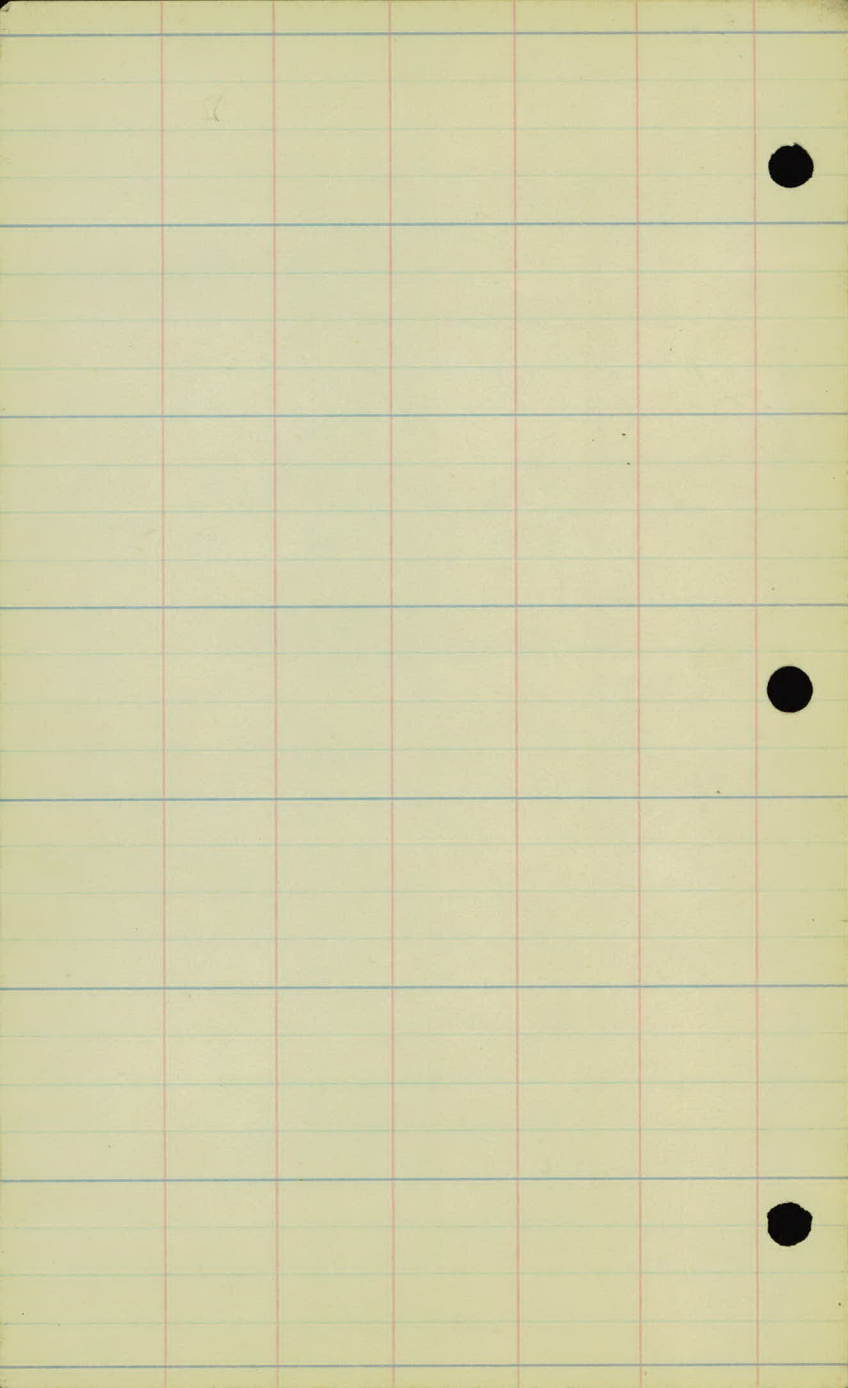


SEC. TIES

"H" LINE ORG
1-13-25



Located from State Hwy. Notes.



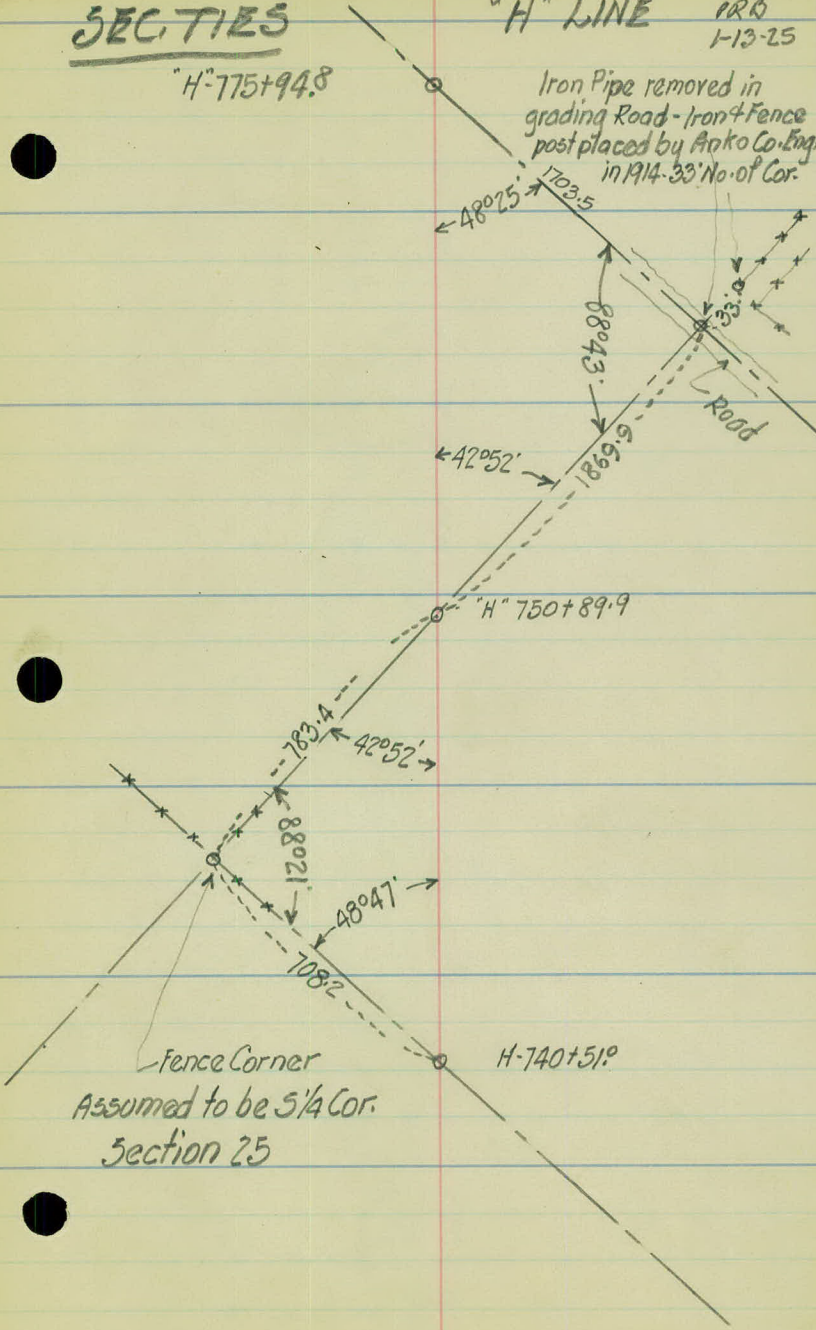
SECTIONS

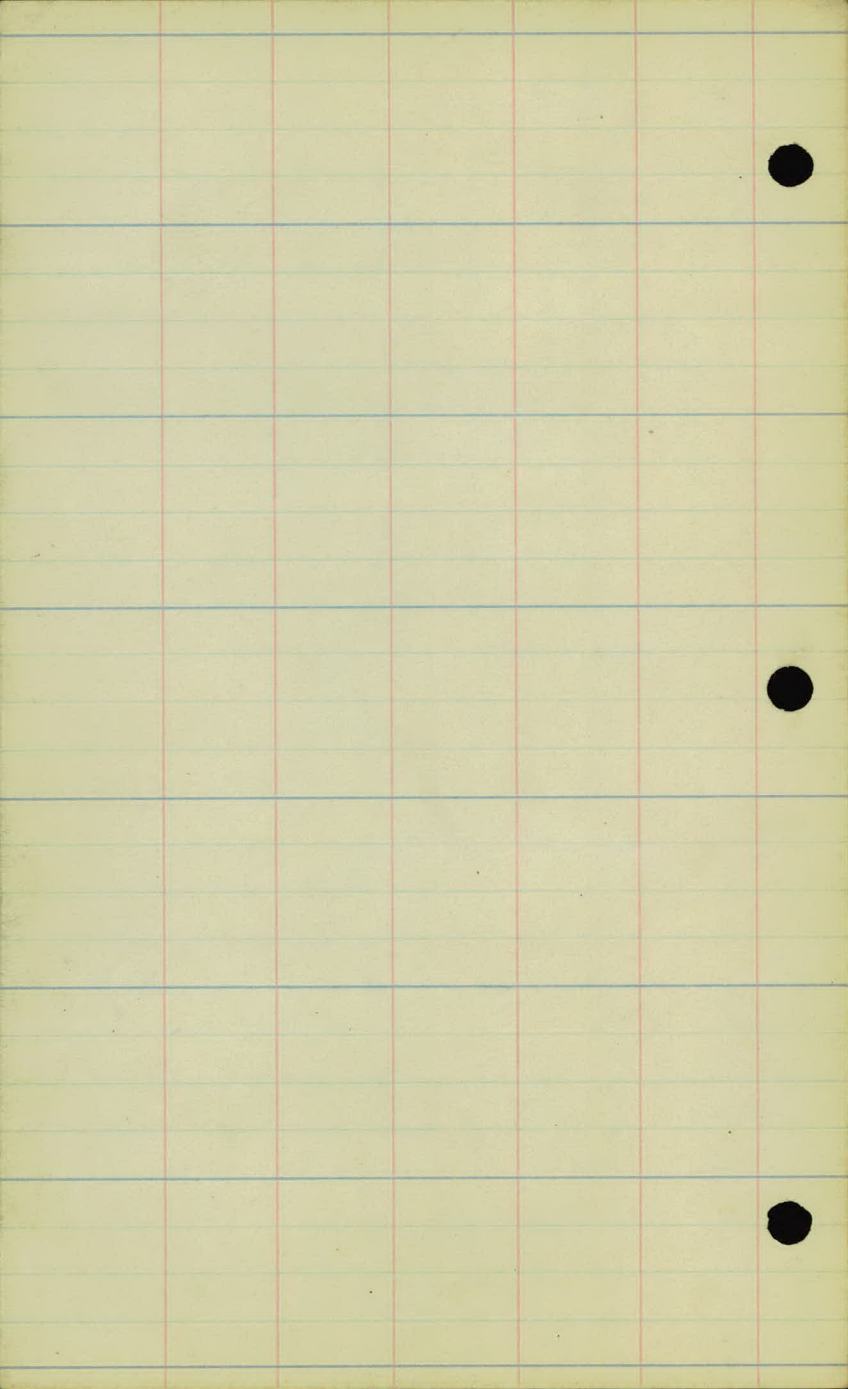
"H" LINE

PRD
1-13-25

"H" 775+94.8

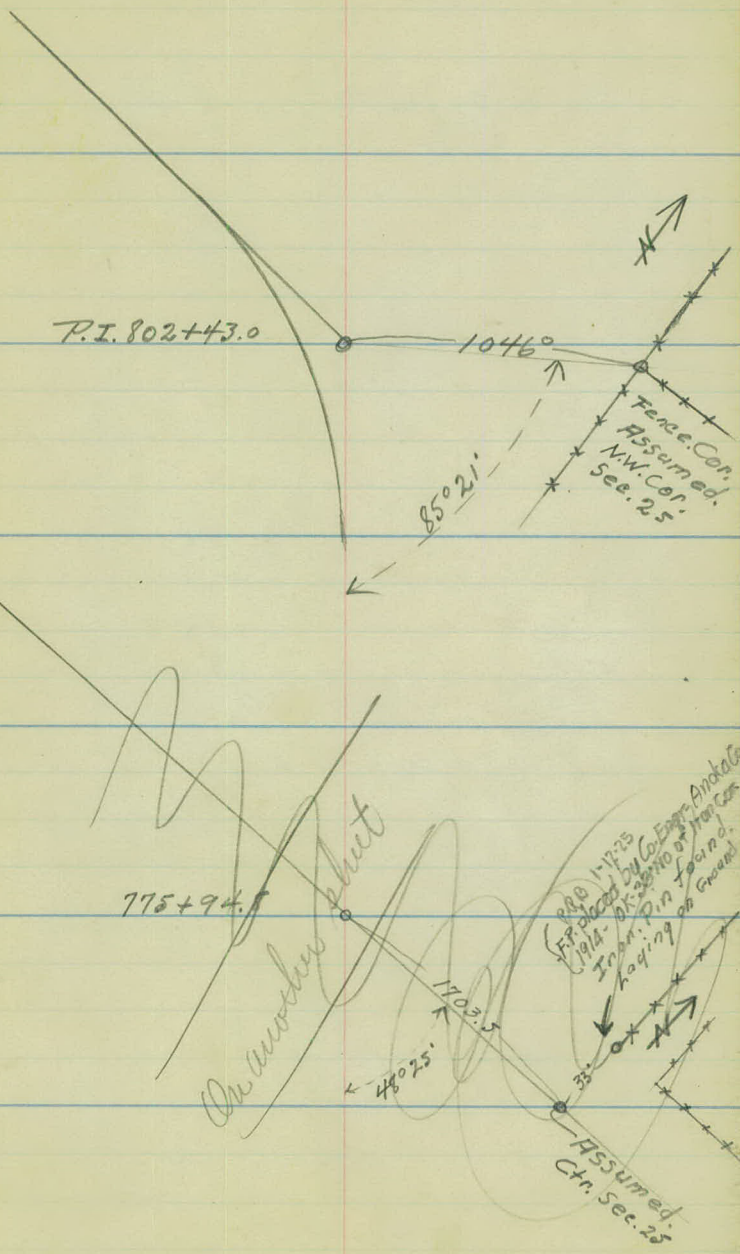
Iron Pipe removed in
grading Road - Iron & Fence
post placed by Anko Co. Eng.
in 1914-33 No. of Cor.

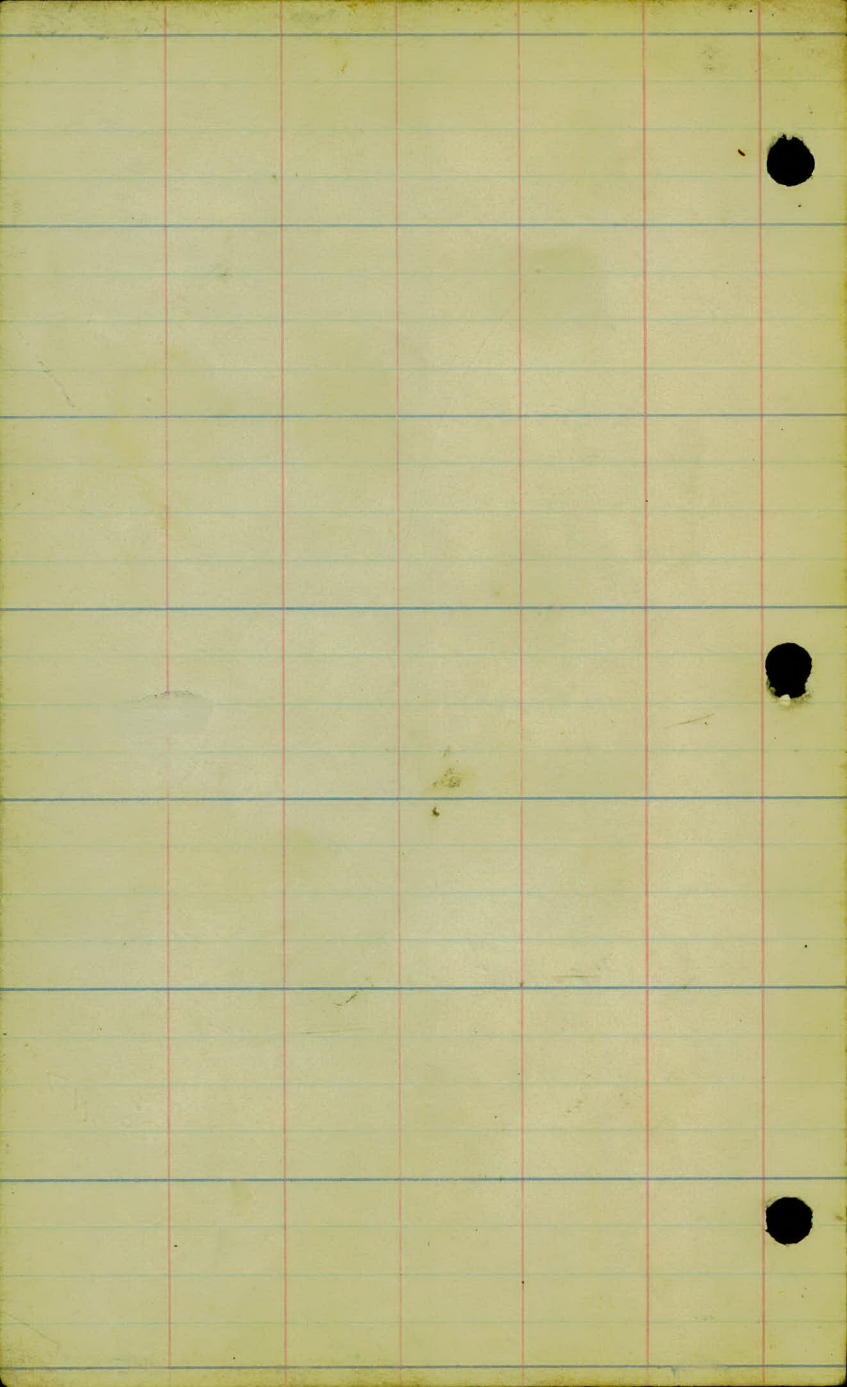




Section Ties

"H" Line



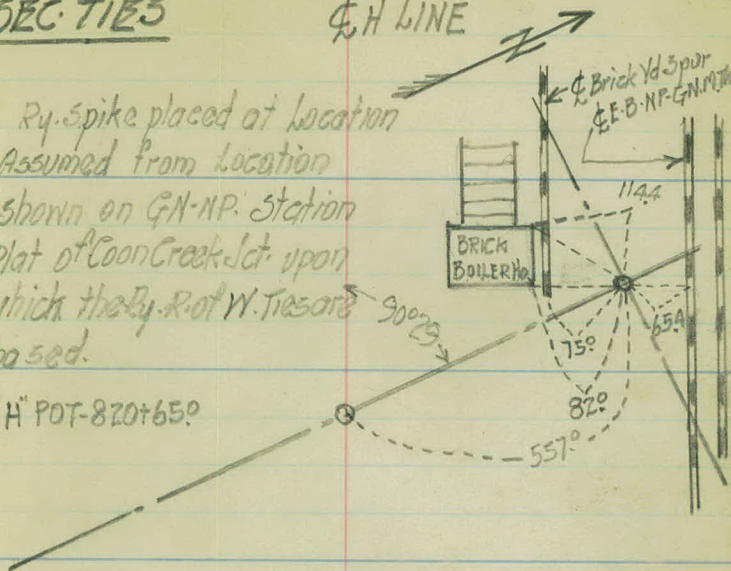


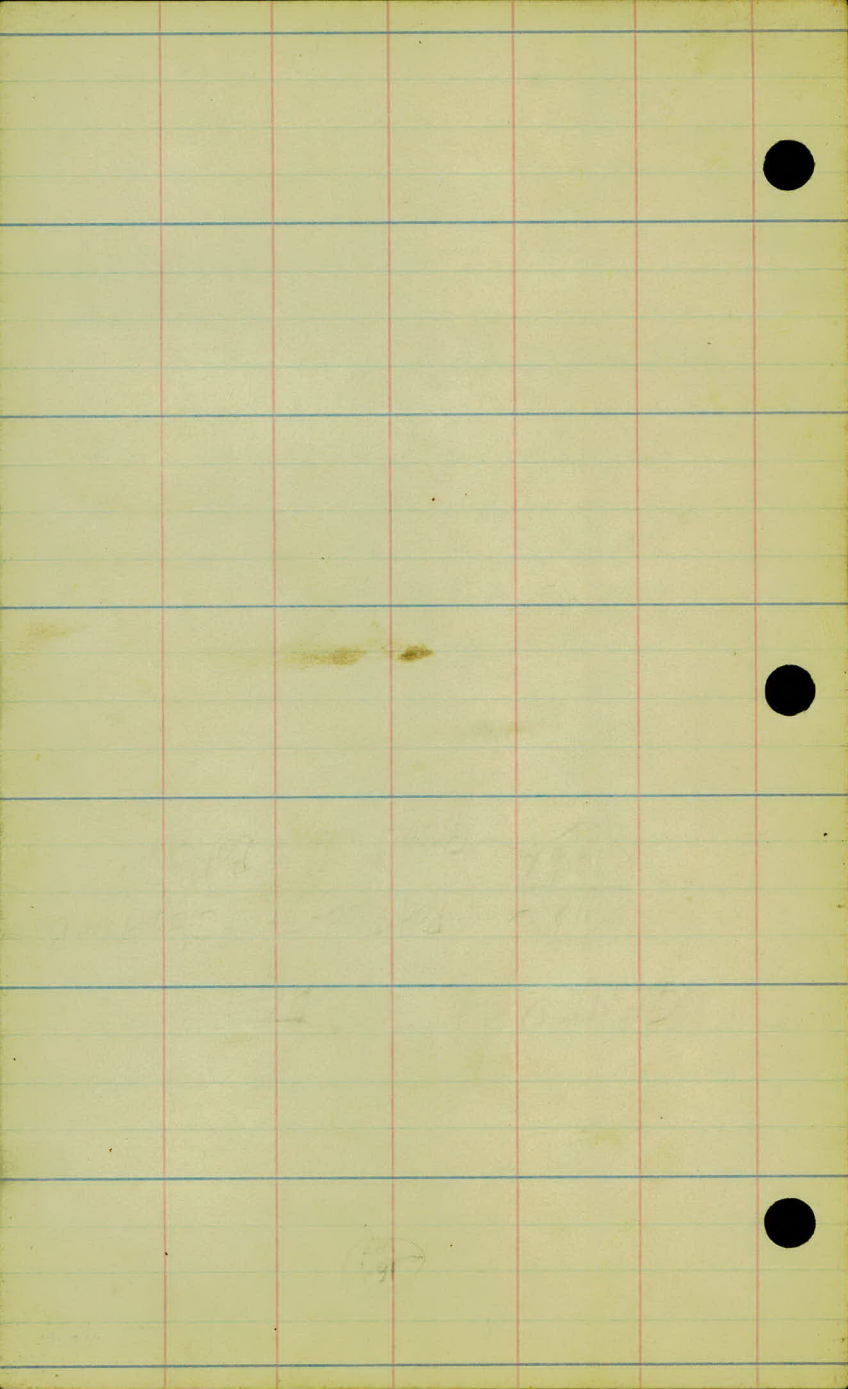
SEC. TIES

6" H LINE

Ry. spike placed at location
Assumed from location
shown on G.N.-N.P. Station
Plat of Coon Creek Jct. upon
which the Ry. R. of W. Ties are
based.

"H" POT-820+65.0





⊕

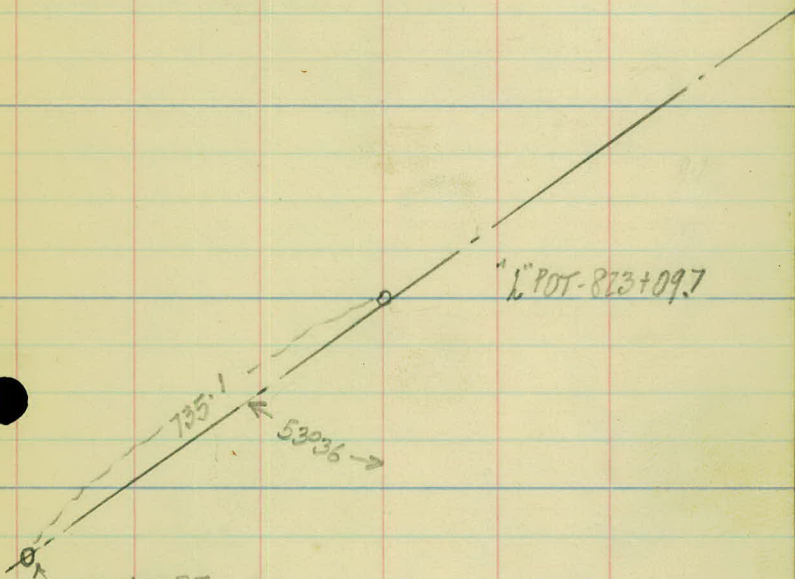
○

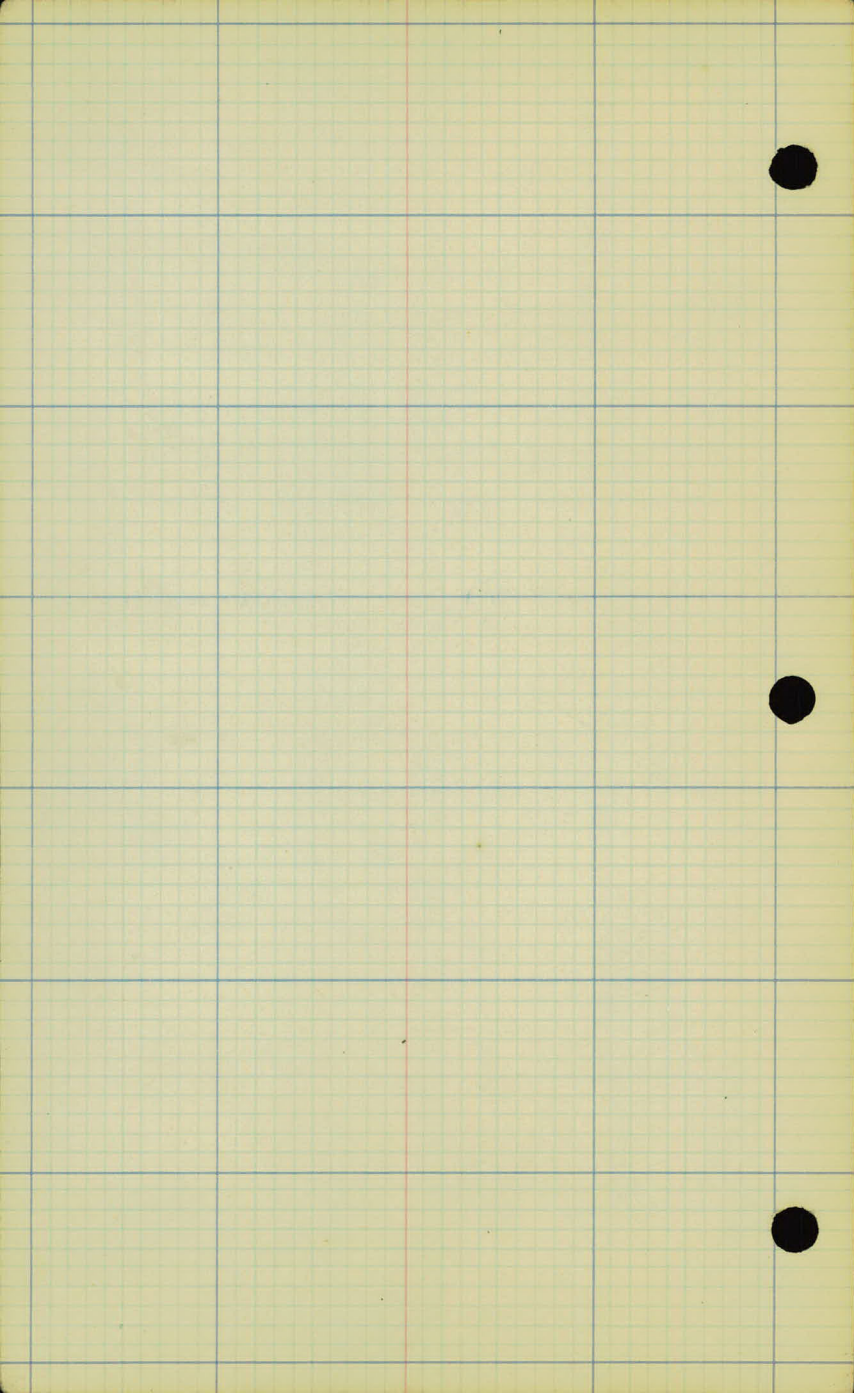
1" POT-823+09.7

735.1

53236

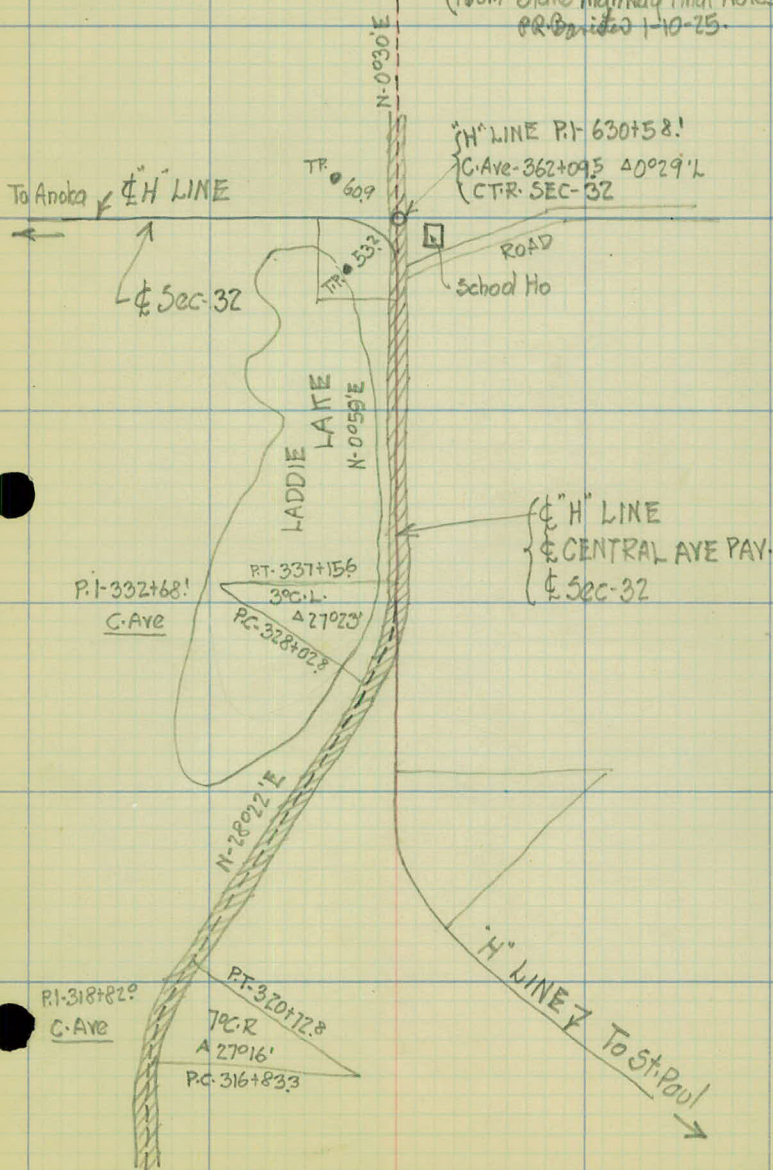
IRON PIPE

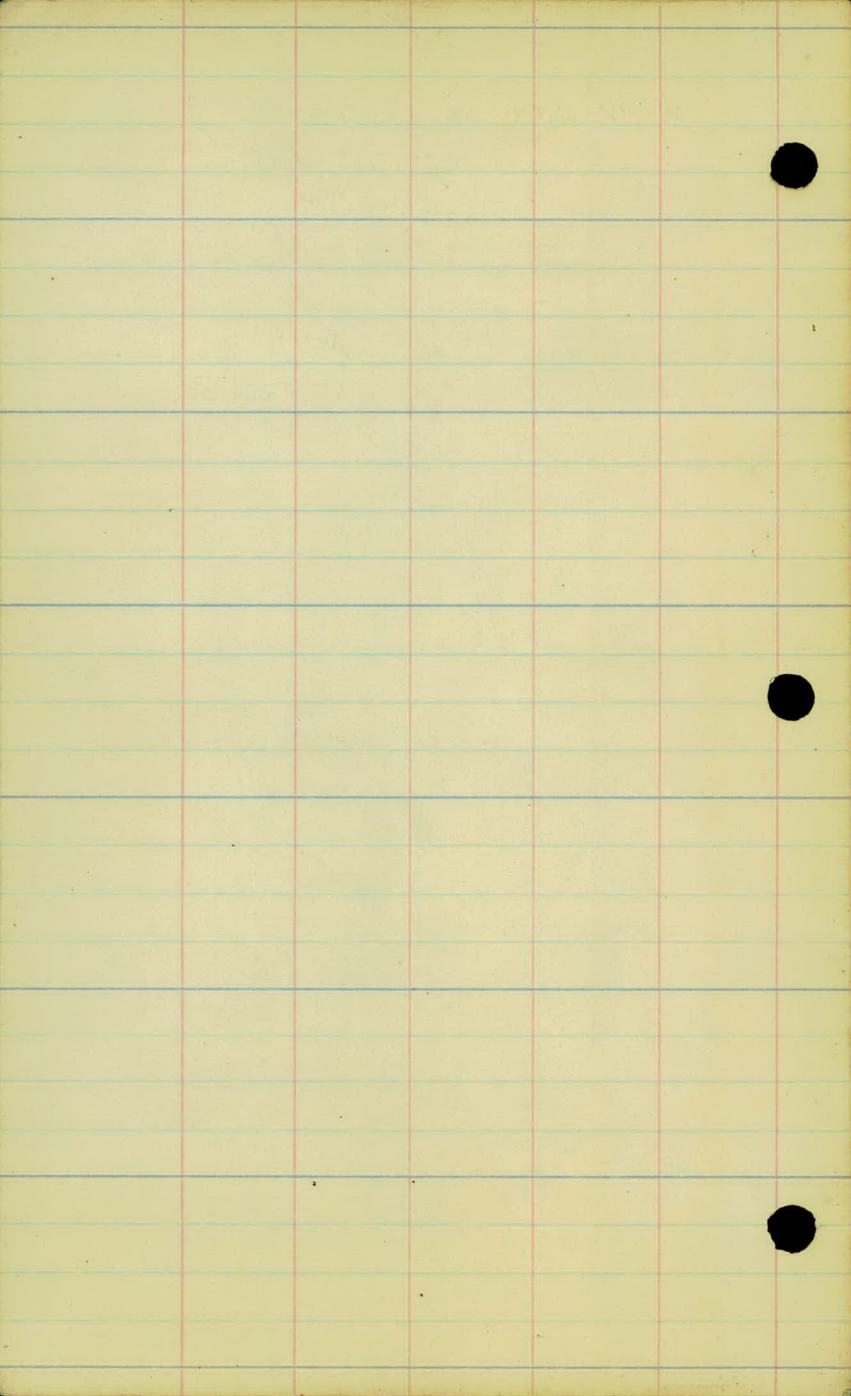




ALIGNMENT OF CENTRAL AVENUE IN VICINITY OF LADDIE LAKE AND CONNECTION WITH "H" LINE

(From State Highway Final Notes)
PR 6/10/25





U 2999