

DRAINAGE SURVEY
ST. PAUL ANOKA RD.

From St. Paul

To Anoka

CO. PROJ. NO

RD% NO. 93

Ramsey Co. Engineer

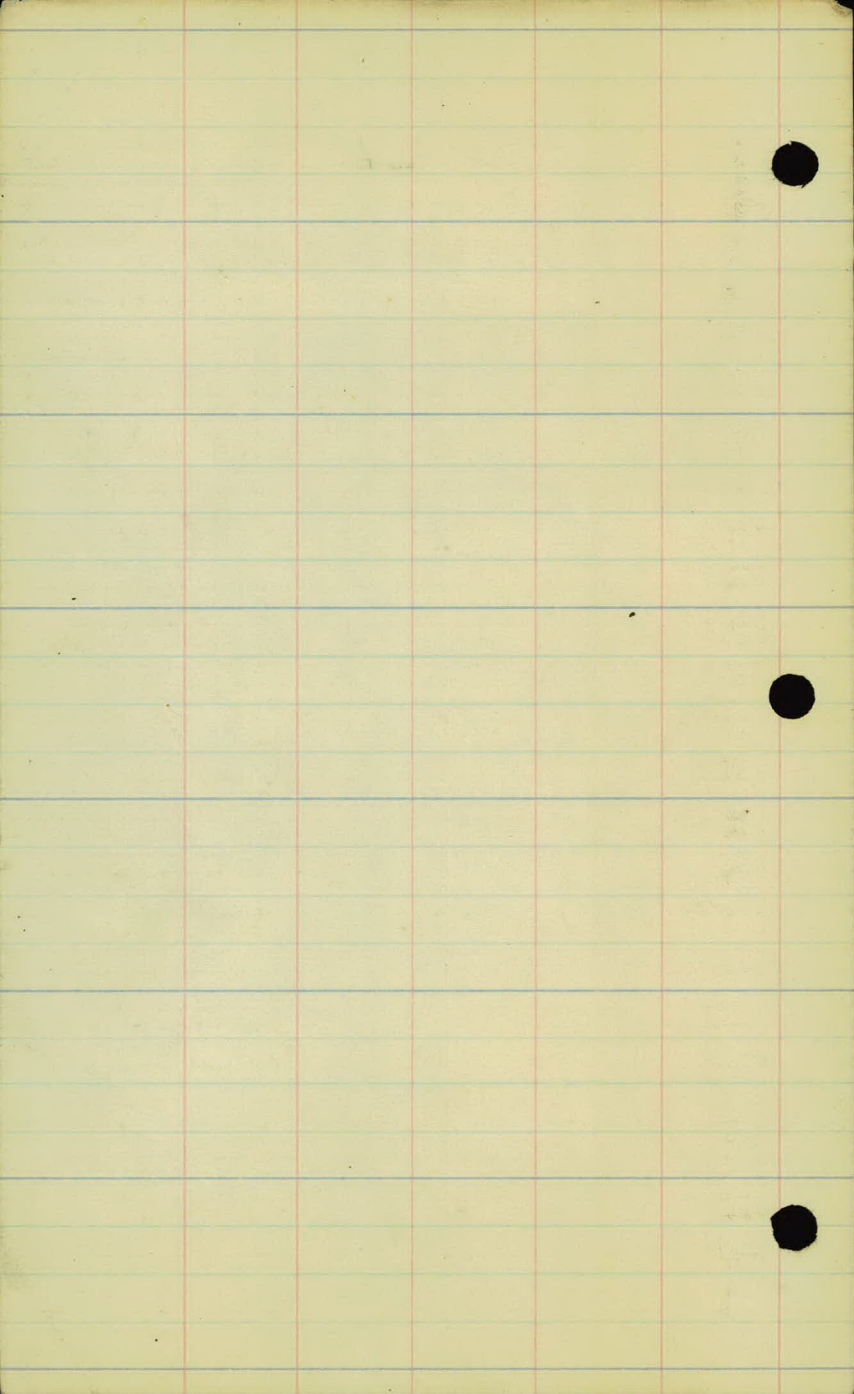
ST. PAUL, MINN.

2-2-25

"5"

File No.

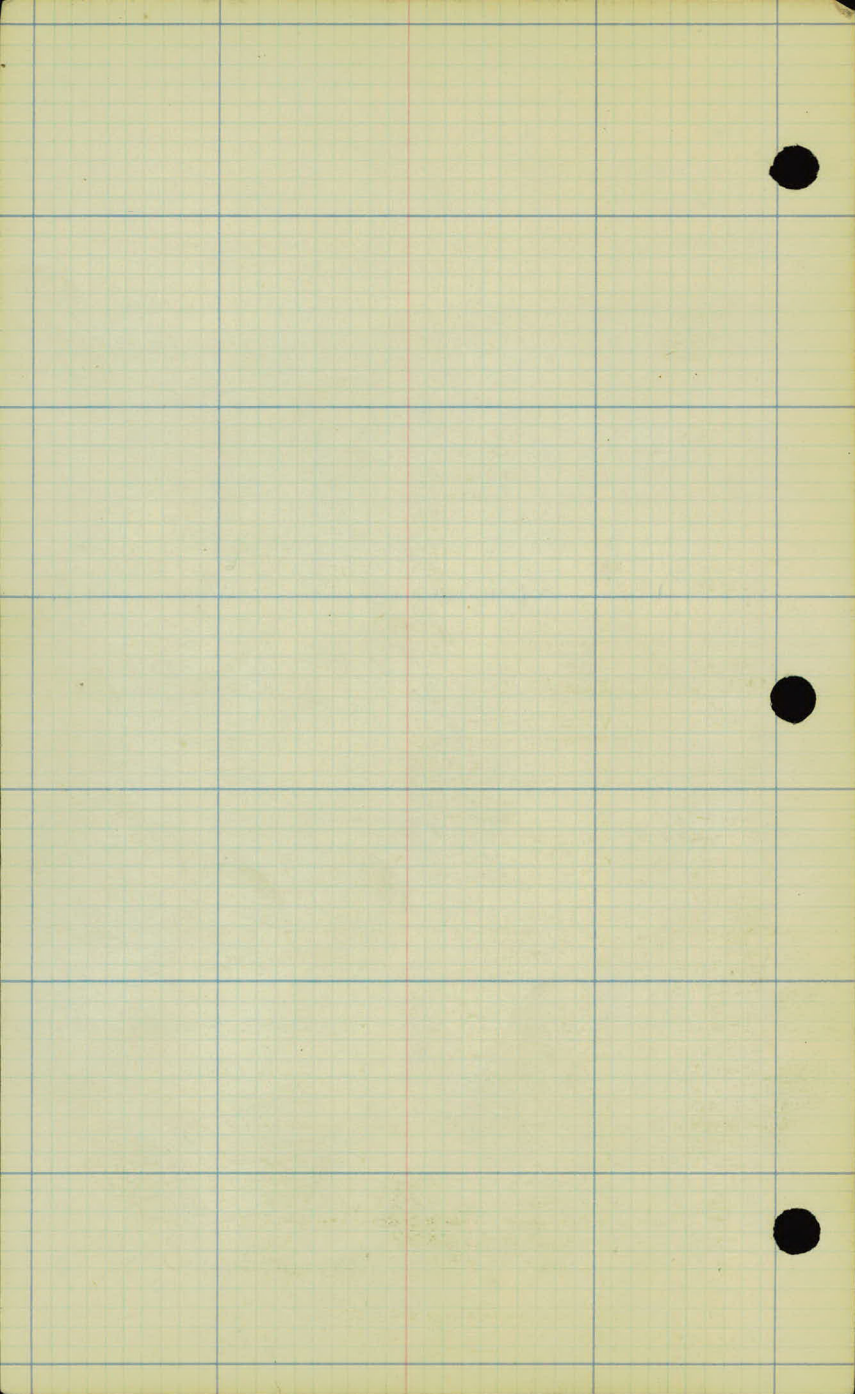
FARM ENTRANCE CULVERTS
AND
CROSS CULVERTS AND DRAINAGE
AREAS.



FARM ENTRIES

H LINE ①
P.R. Parister

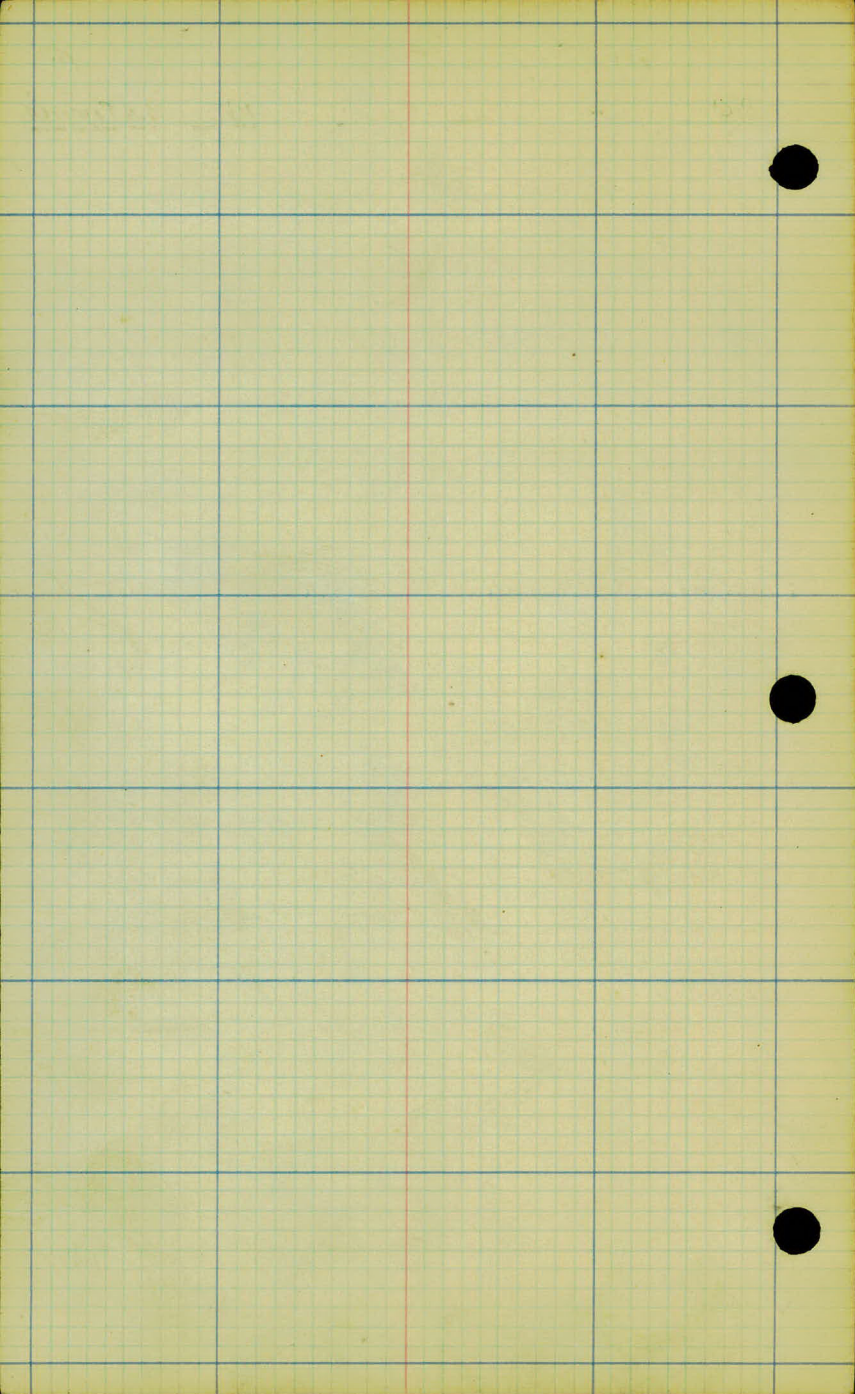
Sta	Rt.	Culv.	Lt.	Culv.	Descript.
183+50	✓	20'-15"	✓	20'-15"	Farm Xing.
192+30	✓	20'-15"	✓	20'-15"	✓ ✓
210+80	✓	30'-15"	✓	30'-15"	Road Xing
218+00	✓	20'-15"	—	—	to Pasture
232+10	—	—	✓	20'-15"	to Cottage
248+00	✓	20'-15"	✓	20'-15"	Farm Xing
256+76.6	✓	40'-18"	✓	—	Co. Rd E.
282+70	✓	—	✓	(20'-15")	Farm Xing
324+80	✓	20'-15"	✓	—	Farm Xing.
341+00	—	—	✓	20'-15"	to Pasture
353+00	✓	—	✓	—	Farm Xing.
³⁷³⁺⁹⁰ 374+12	✓	40'-18" ✓	✓	—	Co. Rd G.
379+70	✓	20'-15"	—	—	Farm Entry.
³⁸⁰⁺⁰⁰ 380+47	✓	40'-18"	✓	40'-18"	Nounds View Rd.
390+00	✓	20'-15"	✓	20'-15"	Farm Xing.
405+00	✓	20'-15"	✓	20'-15"	" "
⁴¹⁵⁺⁰⁰ 414+00	✓	20'-15"	✓	20'-15"	" "
429+00	✓	—	✓	20'-15"	" "
435+00	—	—	✓	20'-15"	" "
443+00	✓	20'-15"	✓	—	" "
⁴⁵⁴⁺⁰⁰ 451+00	✓	—	✓	—	" "
466+00	✓	—	✓	—	" "
477+59.9	✓	40'-18"	✓	—	Co. Rd. H2.
487+00	✓	—	✓	—	Farm Xing.
424+35	✓	—	✓	60'-18"	Cleveland Ave



↙ FARM ENTRIES ↘

"H" LINE (2)

Sta	Rt.	Colv.	Lt.	Colv.	Description
501+16.85	✓	—	✓	—	New Brighton Rd.
514+00	✓	—	✓	—	Farm Xing.
527+00	✓	—	✓	—	" "
546+90	✓	—	✓	—	" "
564+71.5	✓	—	✓	—	W. Co. Line
578+60	✓	—	✓	—	Farm Xing.
586+30	✓	—	✓	—	" "
x 635+50	✓	20'-15"	—	—	Farm Entry.
x 653+50	✓	—	—	—	" "
+ 655+32	✓	—	—	—	Road No.
x 655+42	—	—	✓	20'-15"	Farm Entry.
x 668+70	✓	20'-15"	—	—	" "
x 672+50	—	—	✓	—	" "
x 678+80	—	—	✓	20'-15"	" "
x 680+20	—	—	✓	—	" "
x 681+85	—	—	✓	—	Road So.
x 682+60	✓	20'-15"	—	—	Farm Entry.
x 693+50	—	—	✓	—	" "
x 694+00	✓	20'-15"	—	—	" "
x 701+30	✓	20'-15"	—	—	" "
x 704+00	—	—	✓	—	Road W.
x 711+50	✓	40'-18"	✓	40'-18"	Road Xing.
x 759+00	✓	—	✓	—	Farm Xing.
+ 769+50	✓	—	✓	—	Road Xing.
x 780+20	✓	20'-15"	✓	20'-15"	Farm Xing
x 799+42	✓	20'-15"	✓	20'-15"	" "
826+00	✓	—	✓	—	" "

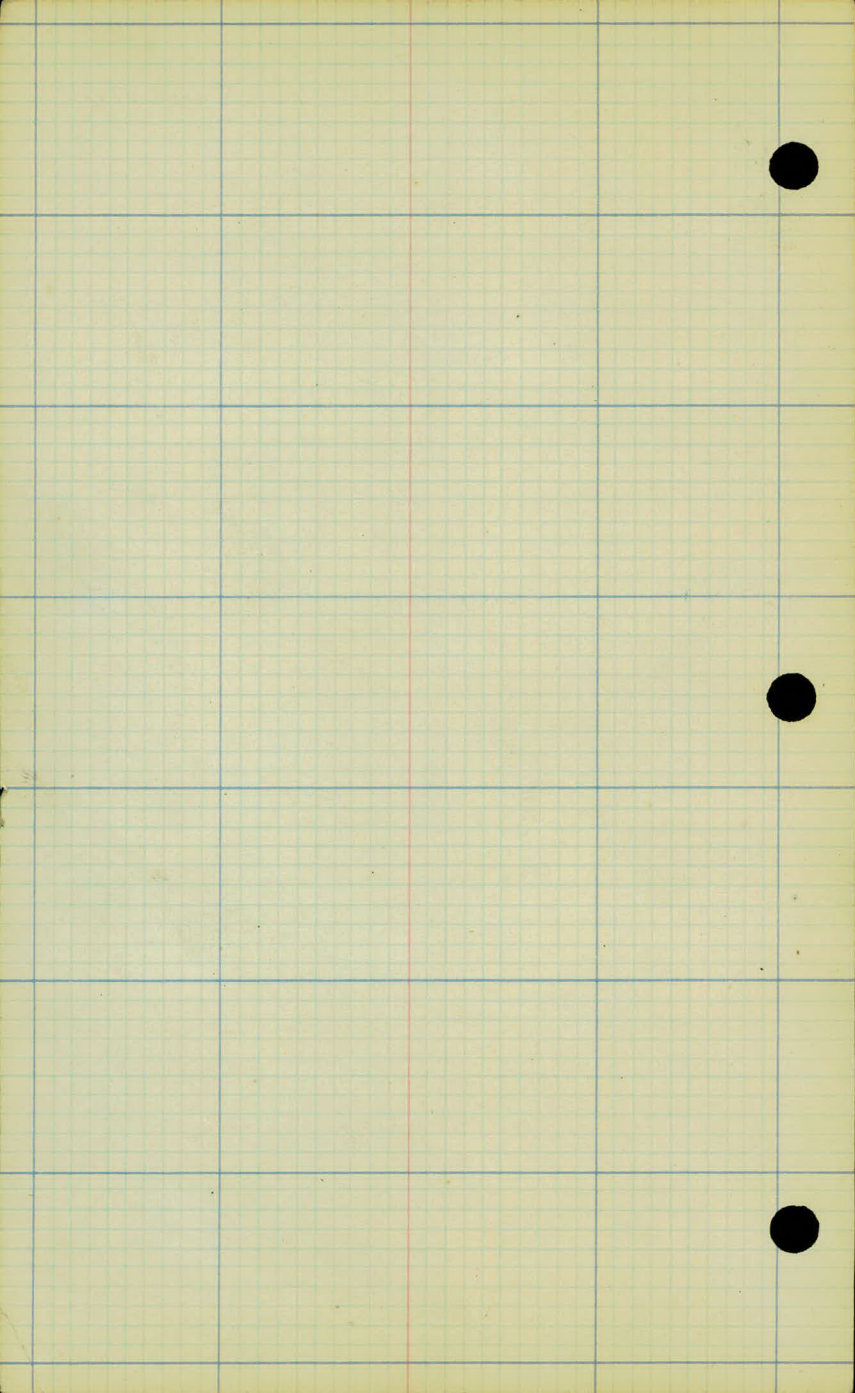


CULVERTS

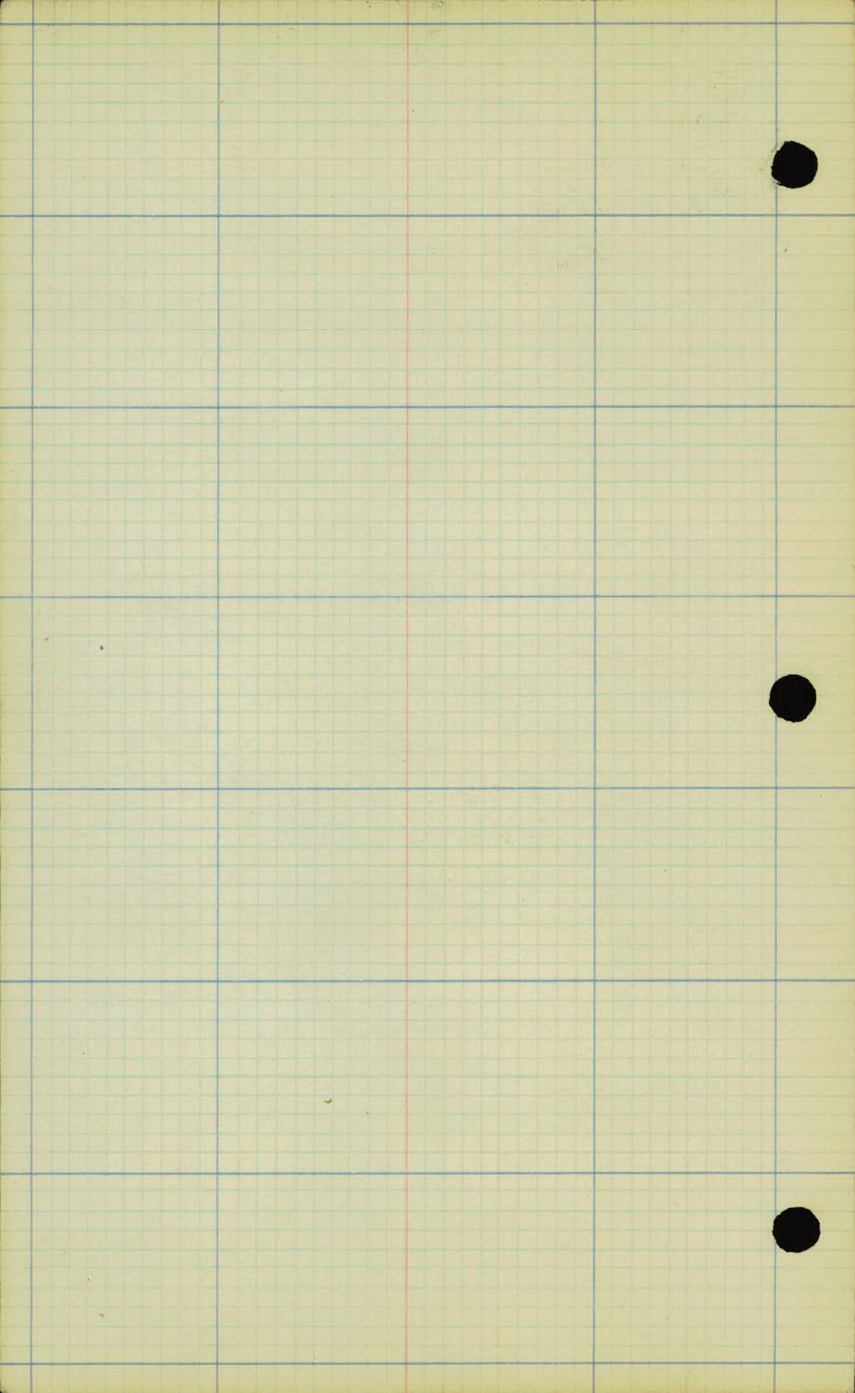
H¹ LINE.

PR. District.

Sta.	Culv. Reccom.	Drain to.	Area Acres.
182+30	24"	Rt.	30
216+50	24"	Rt.	20
230+80	24"	Rt.	20
267+15	24"	Lt.	40
276+00	24"	Rt.	40
284+30	24"	Lt.	70
(Box top) 300+40	36"	Rt.	120
316+00	24"	Rt.	80
323+90	36"	Rt.	
338+00 337+00	36"	Rt.	20ac. but possible over flow from Road.
368+20	24"	Lt.	75
394+60	24"	Rt.	60
436+85	BRIDGE	Lt.	RICECREEK.
456+00	24"	Lt.	EQUALIZER
492+30	24"	Lt.	80
521+40	36"	Lt.	140
539+00	24"	Lt.	100
550+00	24"	Rt.	45
558+50	24"	Rt.	80
574+50	24"	Lt.	60
x 660+00	24"	Rt.	—
+ 693+80	36"	Lt.	36" at Present
x 740+50	W-42 Box	Lt.	400
x 755+00	24"	Lt.	60



Sta.	Cult. Reccom.	Drain to	Area Acres.
x 768+00	24"	Lt.	60
x 781+00	24"	"	80
x 798+00	36"	"	160
x 807+02	6'x8' Conc. Box	Rt. Creek (Ry. Xing 8'x8' Box)	
x 820+40	BRIDGE	COON CREEK.	



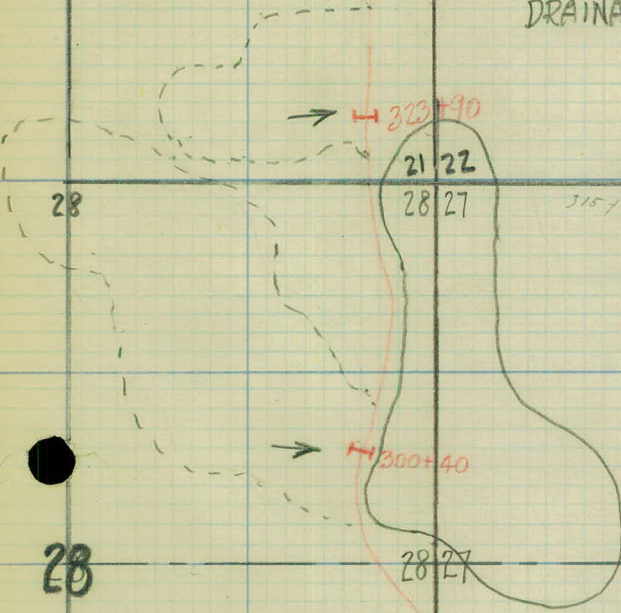
21

21 22

22

DRAINAGE AREA
COLLECTOR
H LINE
↑ N.

DRAINAGE AREAS



21 22
28 27

Sec. Line

3157.50

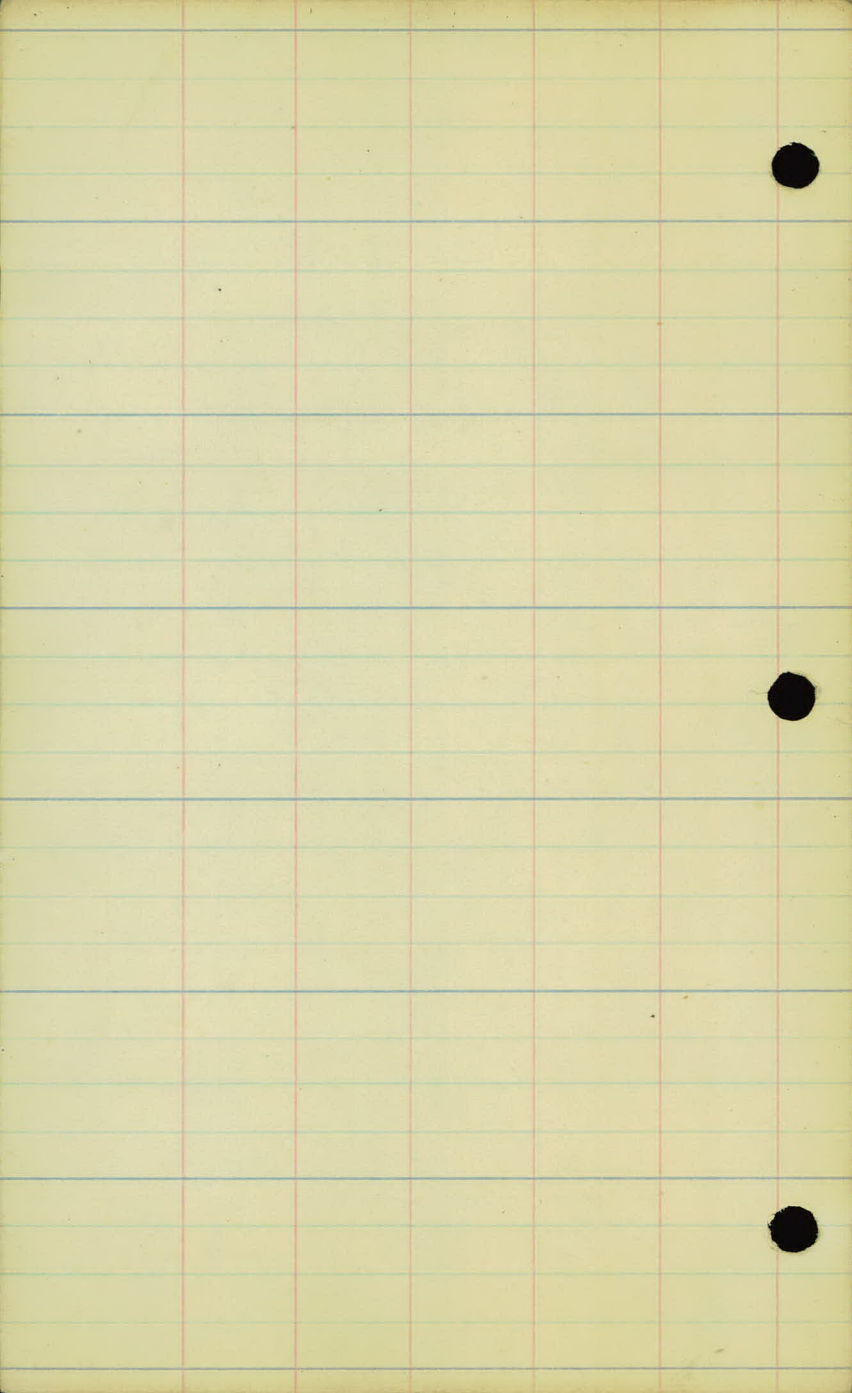
28 27

Sec. Line

28 27

27

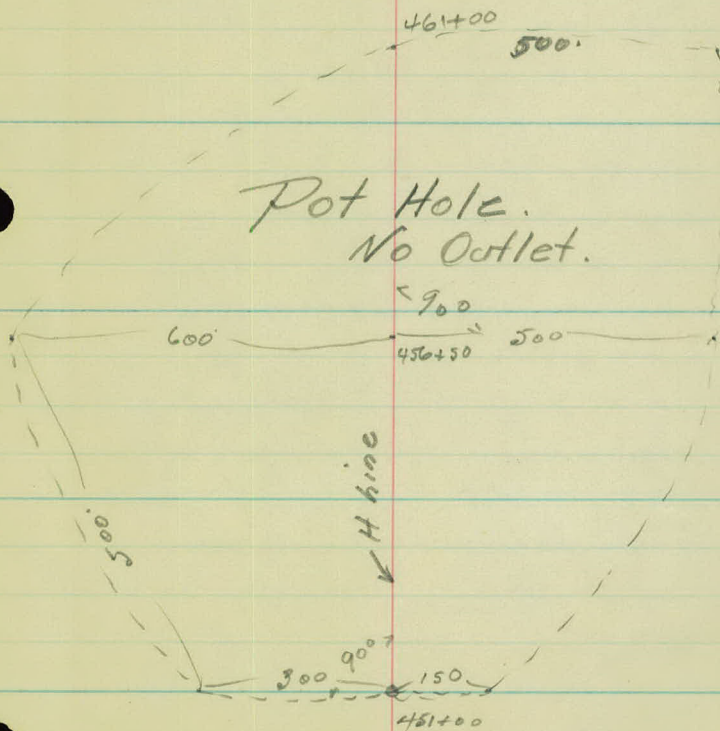
27



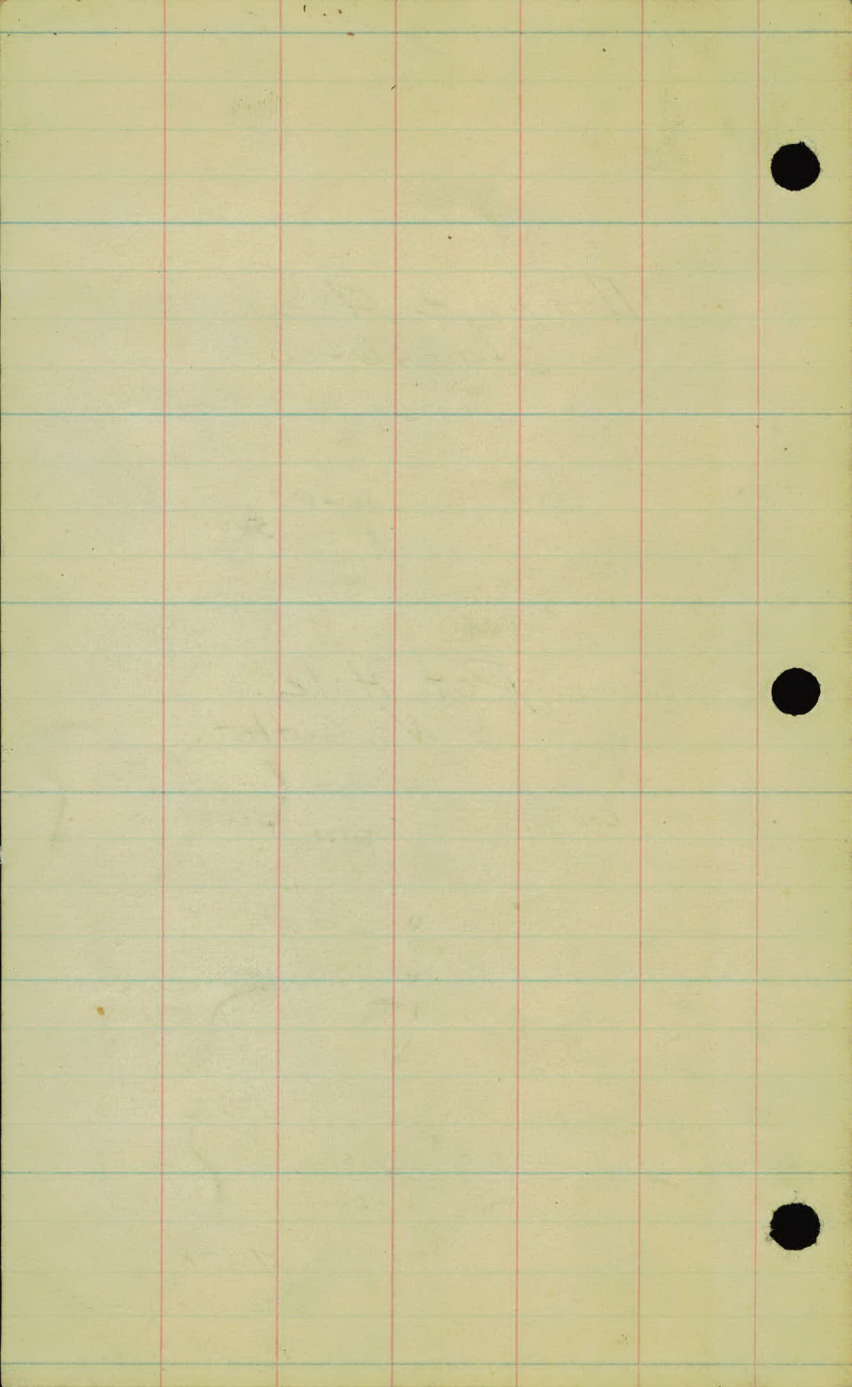
H-hine.

1-31-25

Drainage Area.
Sta 456+00.



Austin }
Skoglund } Party.
McIntire }



U2494