

PLANS SURVEY
QUINCY & OSAGE ST.

From Larpenteur Ave.

To South Street

CO. PROJ. 24-59

Office of Ramsey Co. Engineer
ST. PAUL, MINN.

Date Filed 8-21-24

File No. "10" (24-59)

QUINCY & OSAGE ST.

Project 24-59

From Larpenieur Ave. to South St.

By R. Holterhoff

Recd. 8-6-24

Office of Ramsey Co. Engineer	
ST. PAUL, MINN.	
Date Filed	8/21/24
File No.	"10" (24-59)

0+00 = Sec. Line on Larpenteur

Quincy St.

N x S. 1/4 Line

33 x 33

33

24" No.

47.16

89° 52'

382.14

56.10

55.04

T.P.

18" Oak

N



6+61.57 = Φ Idaho

13

12

33. 33.

50.

13+23.14 \neq Hoyt

St.
Quincy

33. 33.

50.

20+04.23 Ang. L. 38°-25'
19+83.98 E. Nebraska (Gran. Mont.)

QUINCY
25. 25'

OSAGE
RIVER

38°-25'

33. 33.

15" Oak

54.55

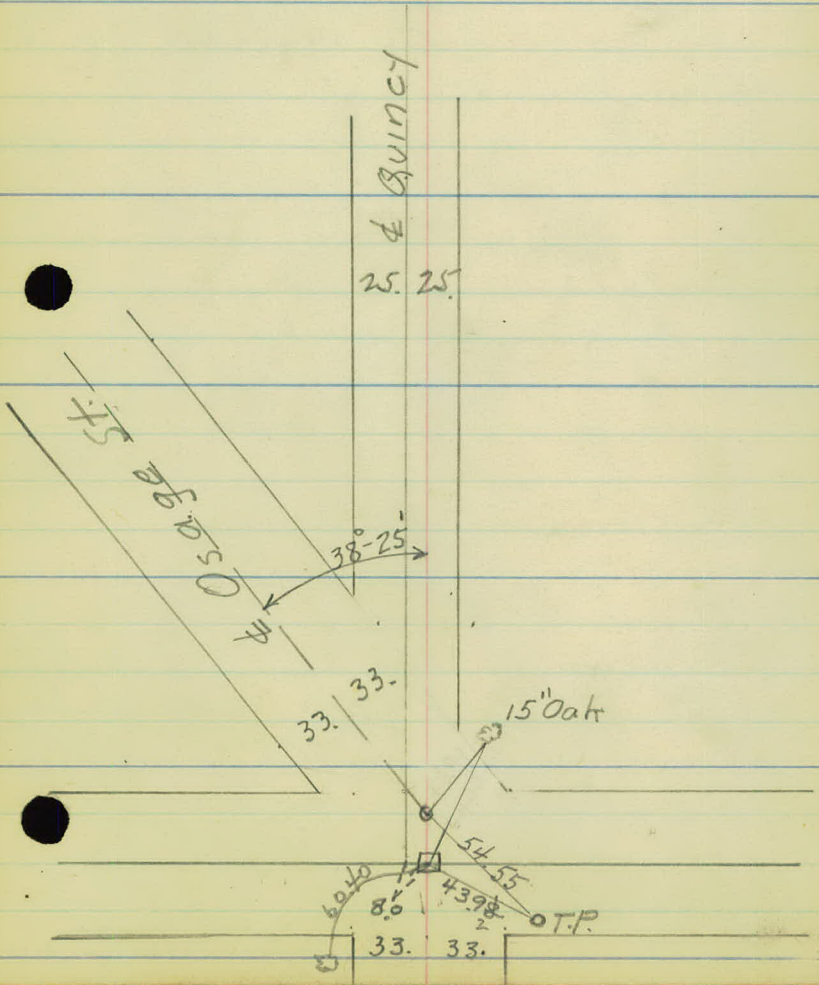
43.98

O.T.P.

60.40

8.0'

33. 33.



27+77.7

$\frac{1}{4}$ Line
Lake Como & Phalen Ave.

26+15.60

1 62 1
27 77.7

34+6310

Rec'd 8-18-24

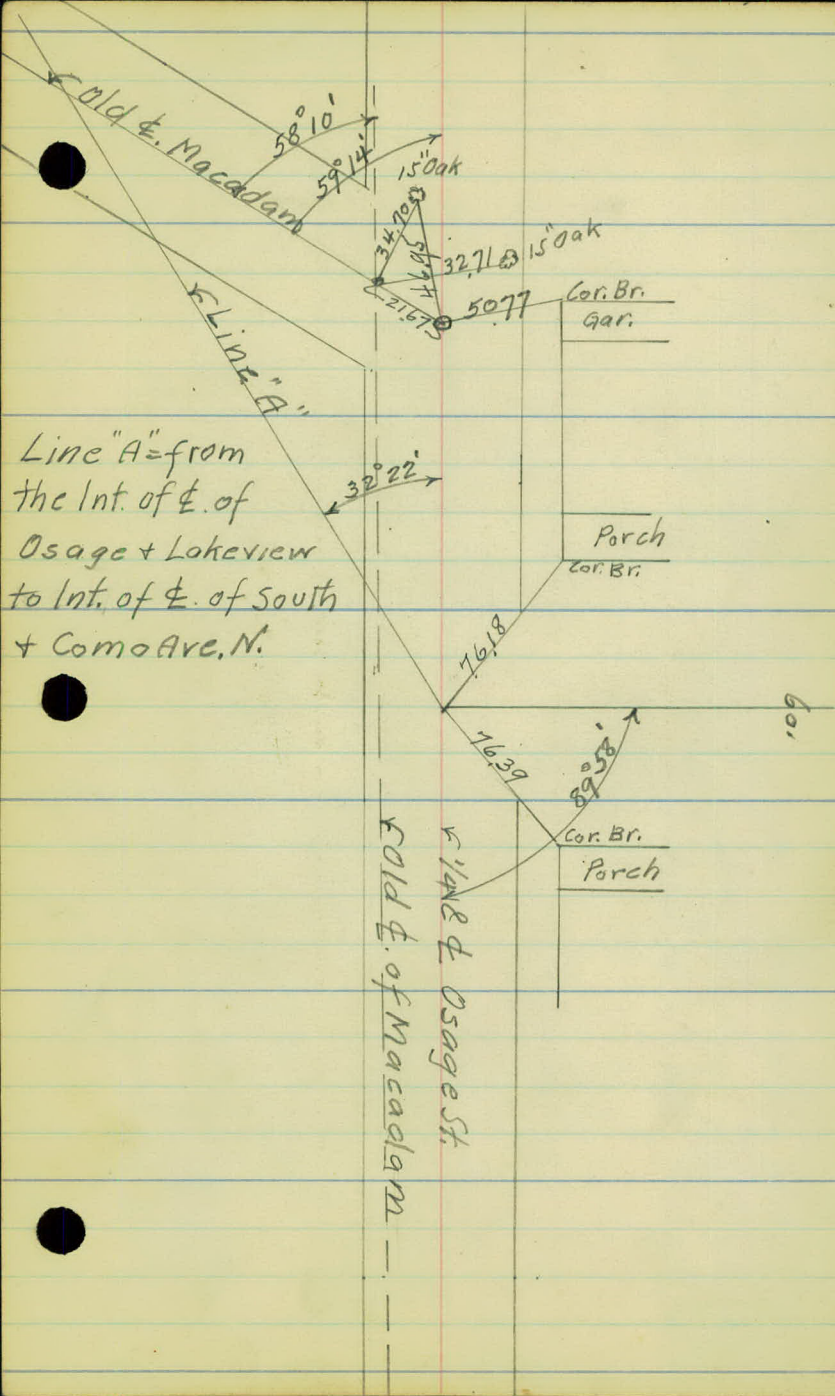
33.0 Iron

50

Cottage St.

38+02.73 Int. of Old Φ . of Macadam
37+81.06 Ang. L. $59^{\circ}14'$

36+66.56 Φ . LakeVIEW Ave.



Line "A" = from
 the Int. of E. of
 Osage + Lakeview
 to Int. of E. of South
 + Como Ave. N.

W. Line A
 Old E. of Macadam

Cor. Br.
 Gar.

Porch
 Cor. Br.

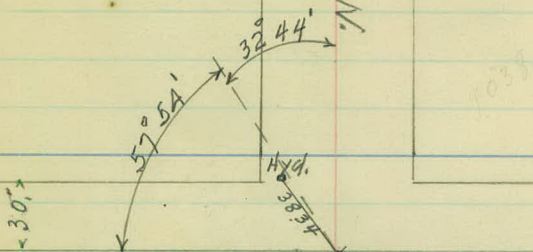
Cor. Br.
 Porch

Gar.

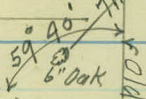
42+66.47 = $\frac{1}{2}$ South St. (Sta. on old Macdm. Line
41+79.89 " " " Sta. on Line "A"

41+22.73

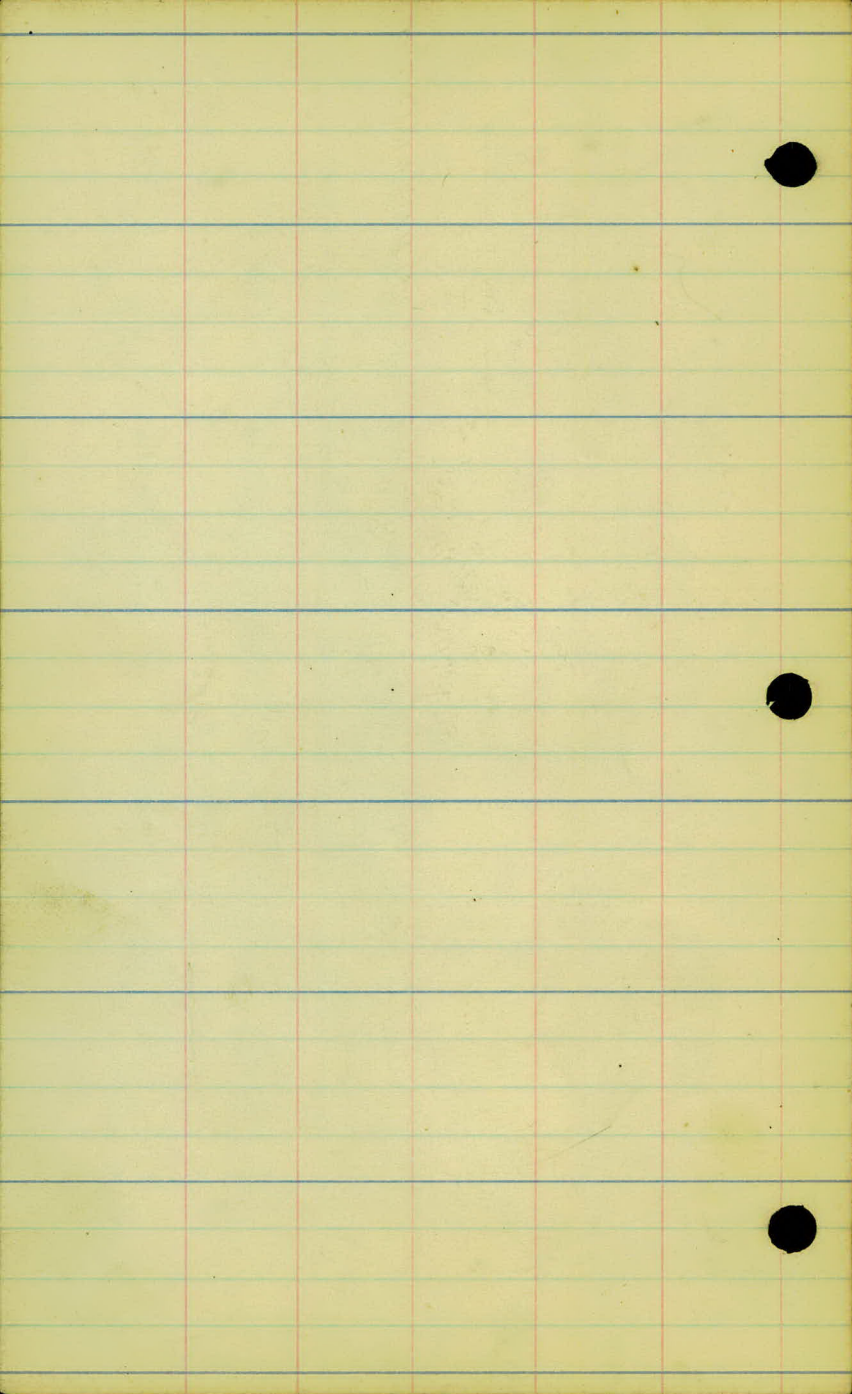
E Como Ave. N.



164.5
37.89
6" 18" Oak



Macadam
K-Line "A"



3+00

Cultivated



194. +73

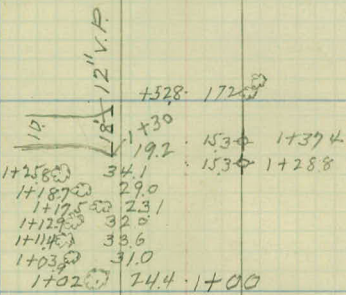
+52 32.2 +49.7 17. 68.5

+267. 23.5
+214. 146
+133. 26.4

2+00

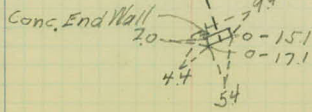
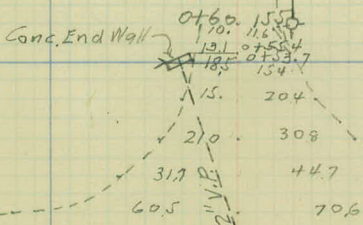
+99. 13.2
+96. 16.9
+92.9. 12.5

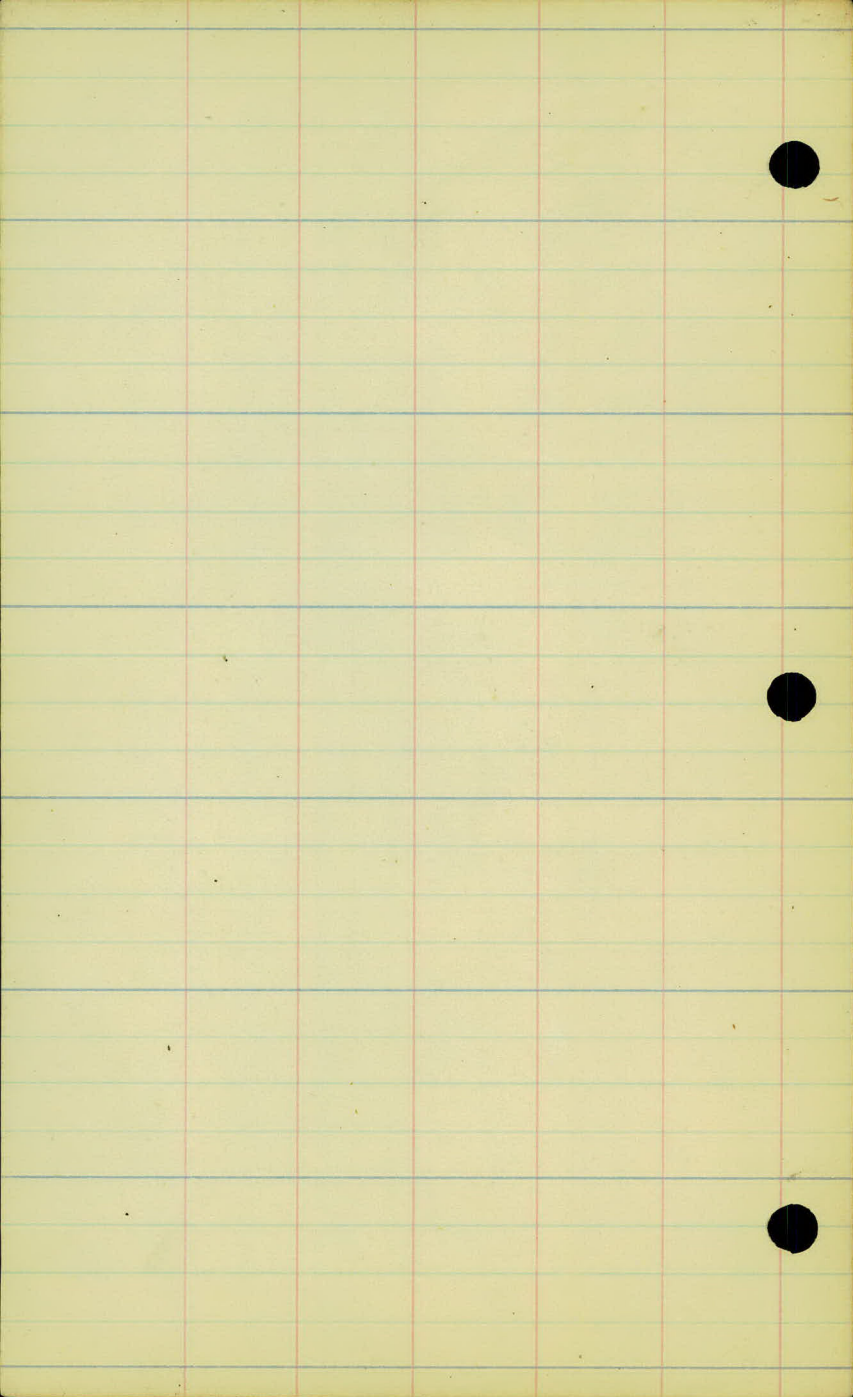
Private Drive



Hay Land

176. +968





(Dry) Swamp

Meadow

5+40

Cultivated

Hay land

• 22.6 +22.6

6+00

+737 15.1-0

+303 23.6 ☉

☉ 30. 5+00

+924 32.0 ☉

+59.8 28.5 ☉

+53 15.2 ☉

• 21.0 +48.2

+28 28.2 ☉

+20.8 29.0 ☉

4+00

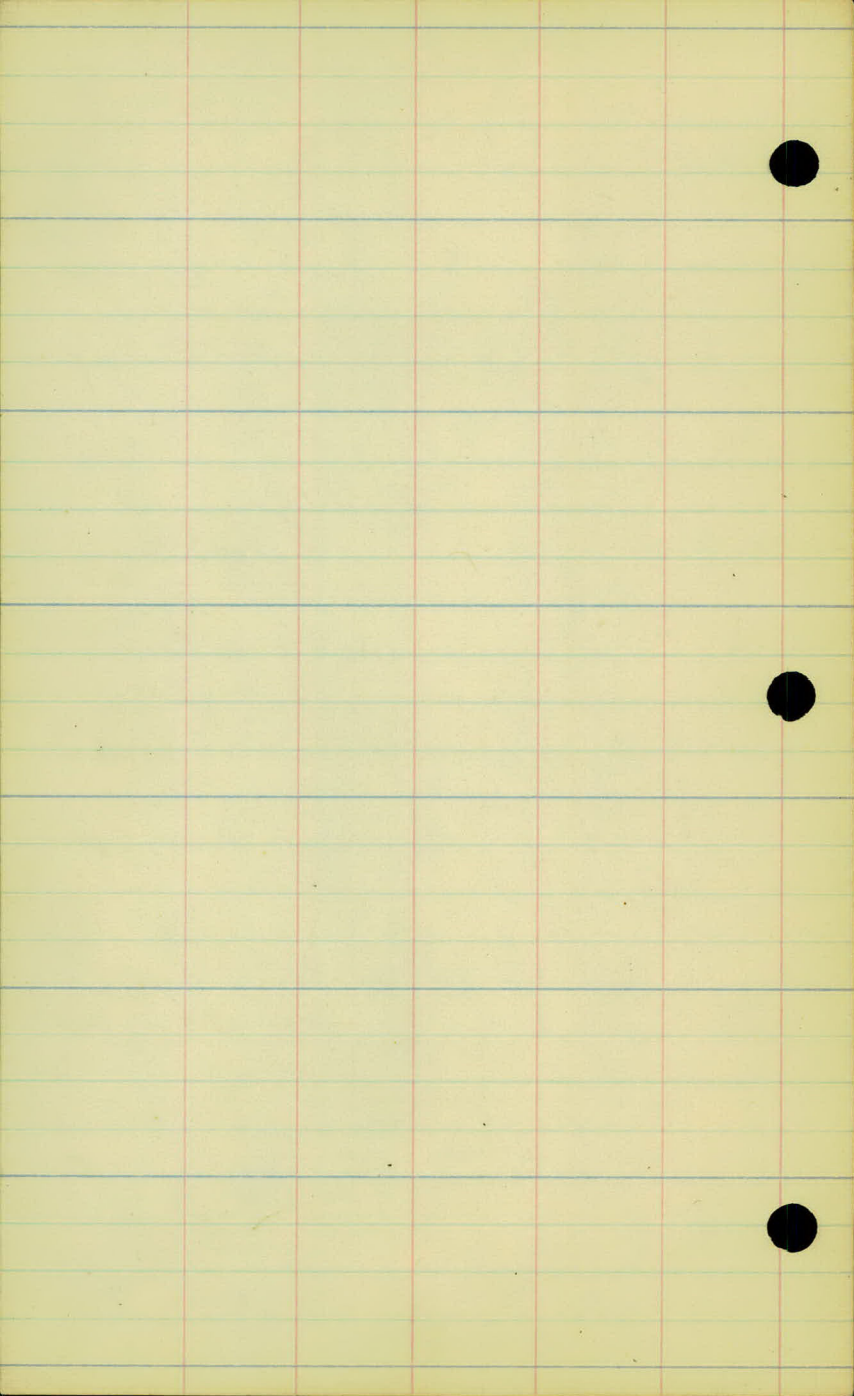
+84.6 27.5 ☉

☉ 32.0 +58 +56.6 29.2 ☉

☉ +49.6 29.0 ☉

☉ +26.6 15.0 +27.6 29.1 ☉

☉ +09.8 29.8 ☉
3+00



10+00

Cultiv.

+88.9 · 13.1

+66.3

+57.8 · 15.5

+50 · 11.2

Conc. End Wall

$\frac{20.5 \times 13.5}{20'' \text{ V.P.}}$

+38.2 Conc. End Wall

29 +27 · 12.4

+13.4 · 12.4

9+00 · 12.5

+83 · 11.7

Meadow

+26.4 · 15.5

+15.5 · 15

8+00

24.1 · 19.5

+89.4 · 15

+70.7 · 9.3

(Dry) Swamp

+21.9 · 10.7

+12.2 · 12.8

7+00

+97.7 · 14.8

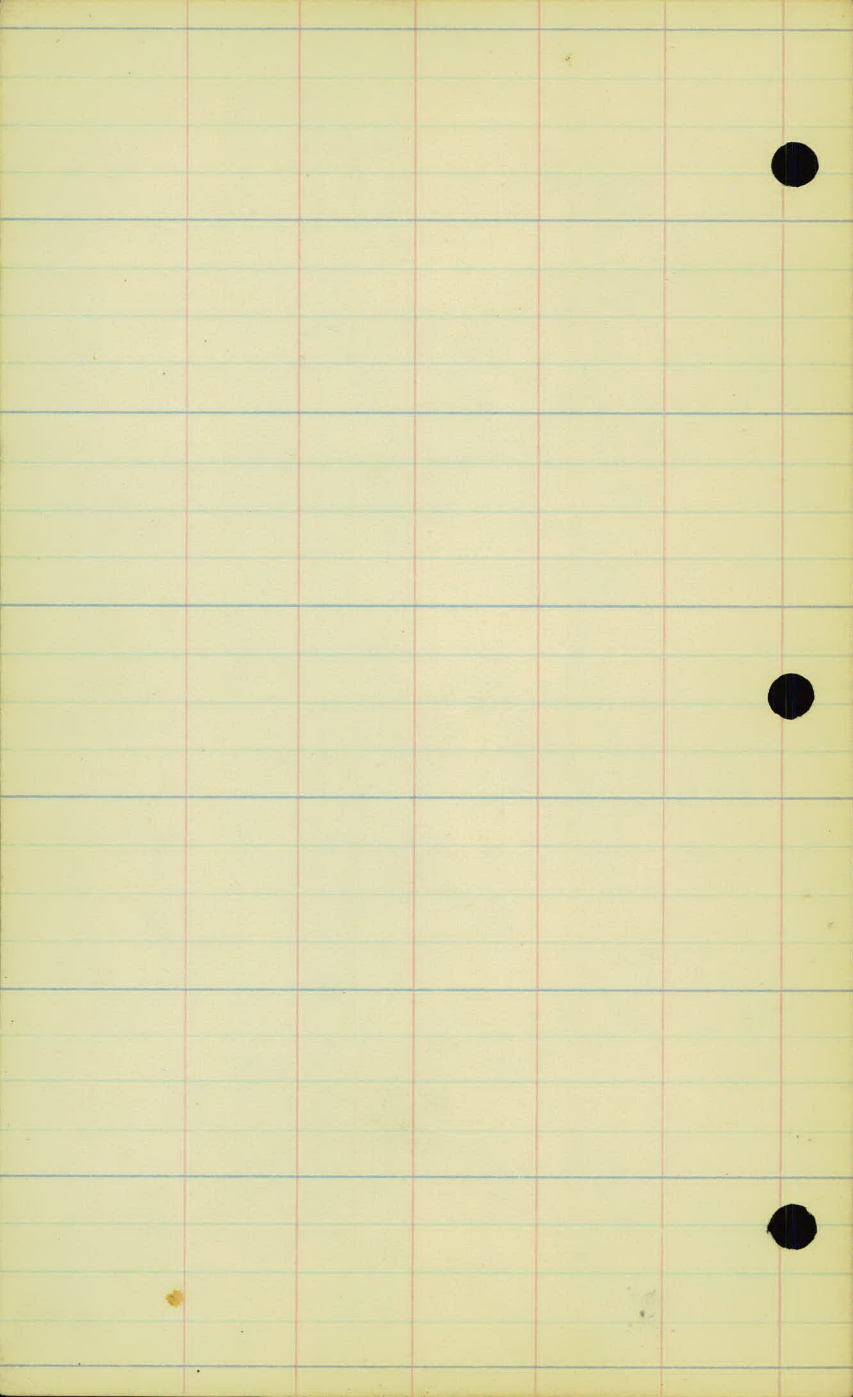
+88.5 · 13.2

+75.7 · 13.8

Idaho

+57.3 · 26.6

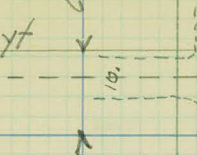
+52.7 · 26.3



Hoyst

Cultiv

+44.154
+39.218



+13

+04.139-
13+00

• 25. +79.5

+208.154-0

Lawn

12+00

+77.3.116

Swamp
(Dry)

• 26.3. +41.9

X

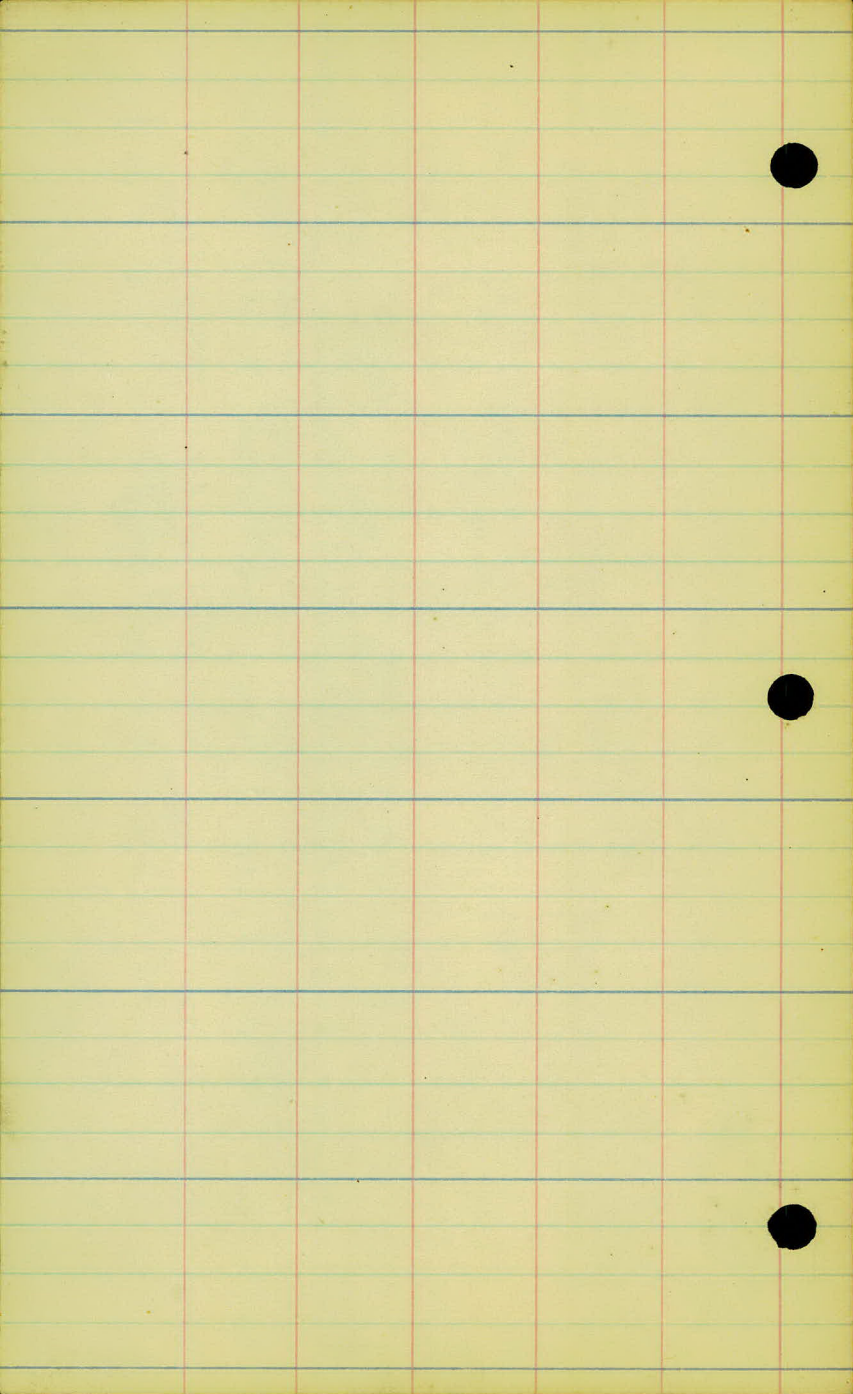
11+00

+91.4.154-0

Cultiv.

• 31.8. +60

10+00



17+00

+868 · 16.5

+44 · 14.5

16+00

+892 · 16.0

+167 · 20.8

15+00

+905 · 19.5

+662 · 15.4

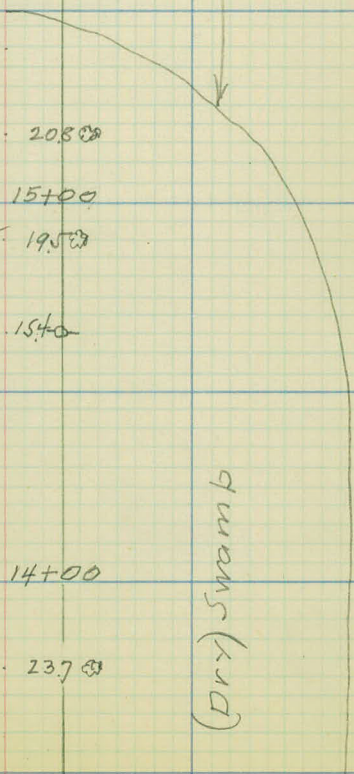
14+00

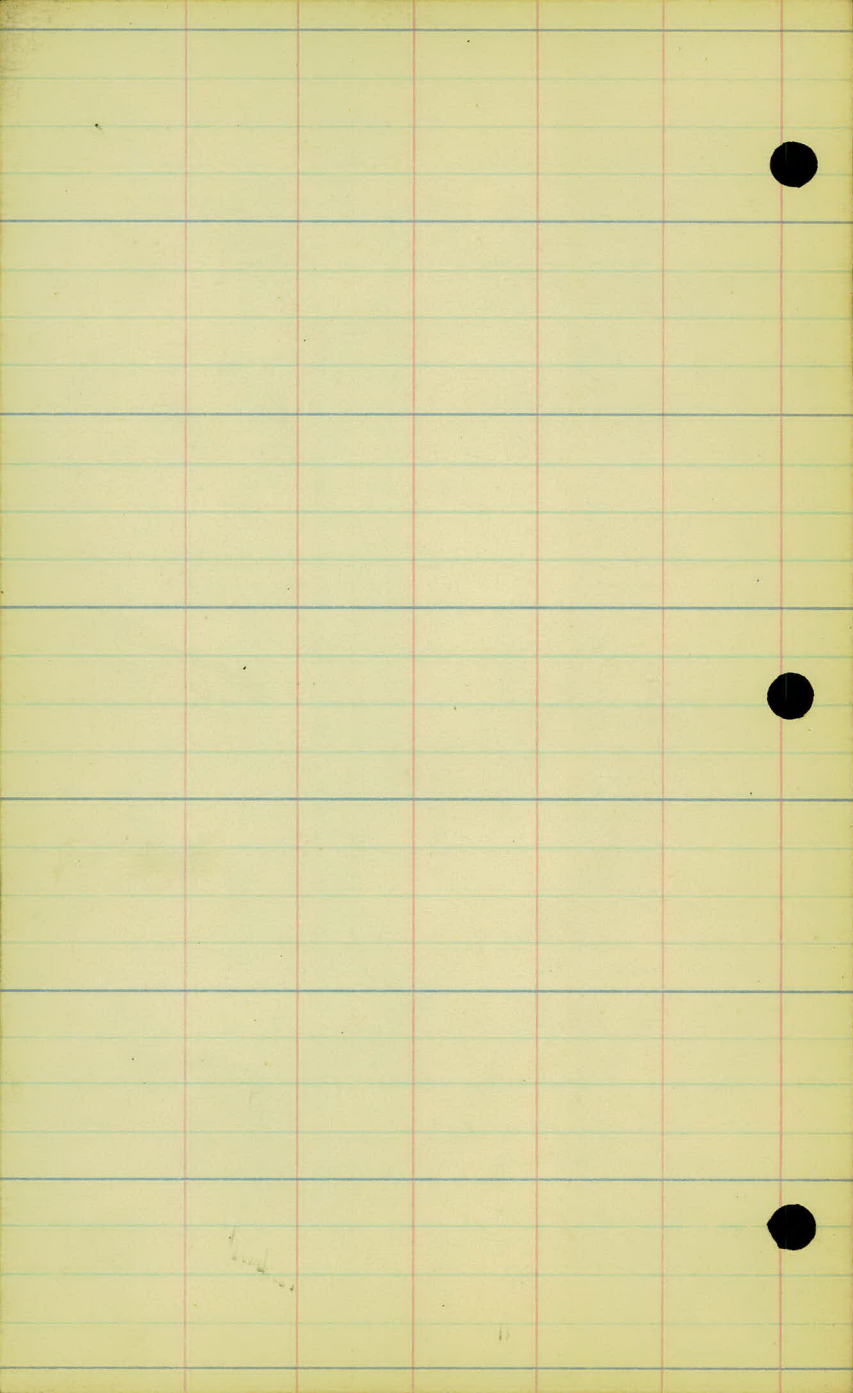
+77 · 23.7

Corn Field

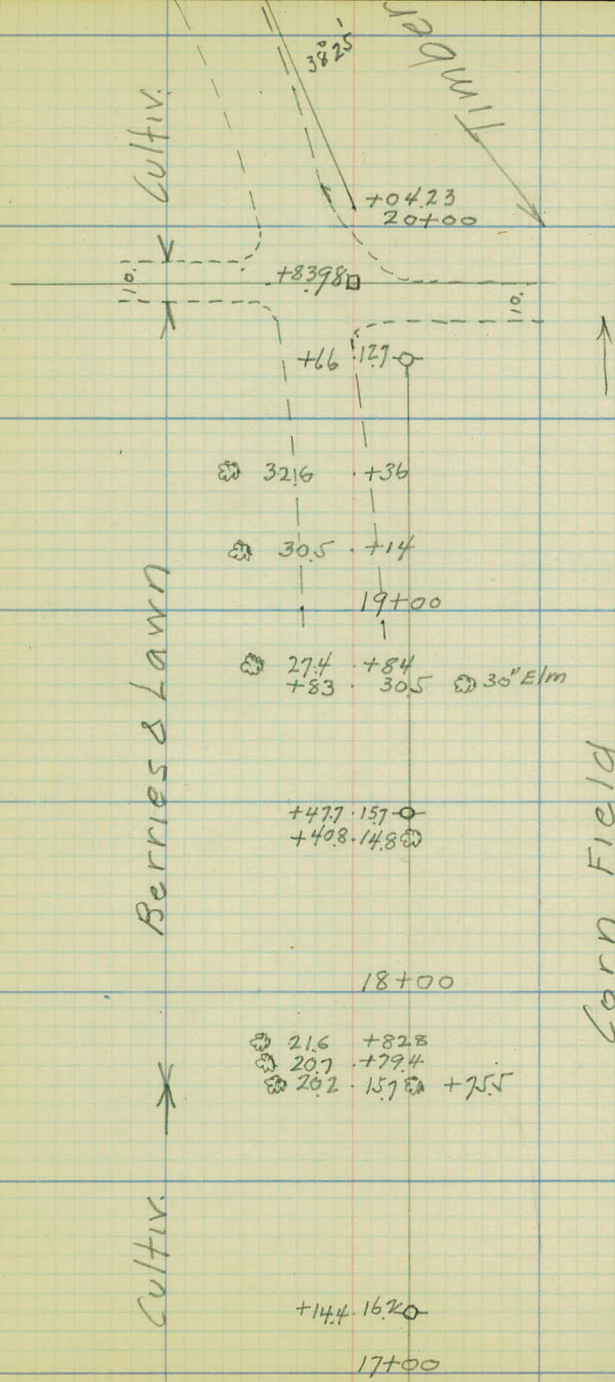
(Dry) Swamp

Cultivated





[Faint, illegible handwriting]



Cultiv.

Timber

Berries & Lawn

Corn Field

Cultiv.

38°25'

+04.23
20+00

+839.8

+66 +12.7

32.6

+36

30.5

+14

19+00

27.4
+83

+84
30.5

30' Elm

+47.7 +15.7
+40.8 +14.8

18+00

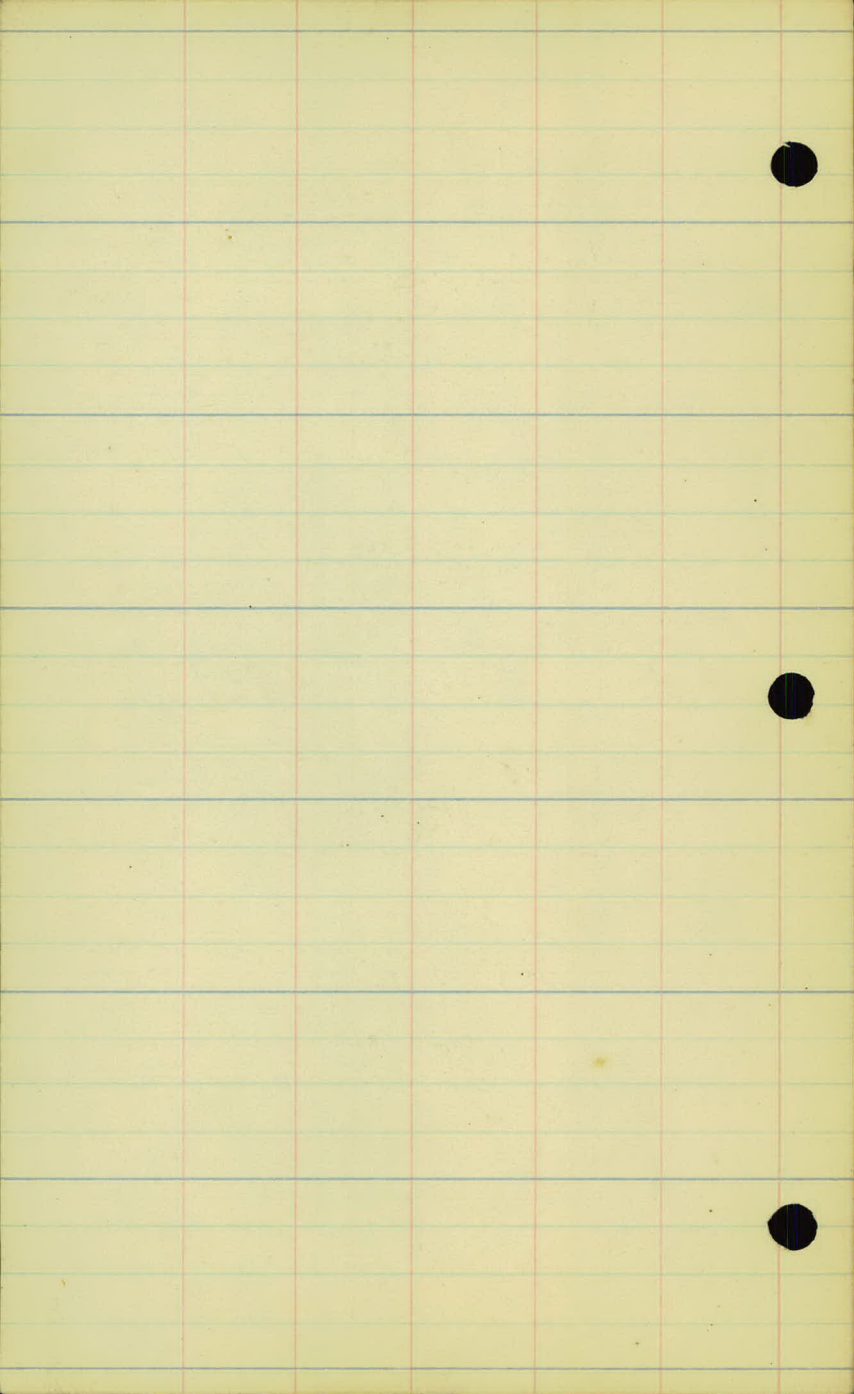
21.6
20.7
20.2

+82.8
+79.4
15.7

+75.5

+14.4 +16.2

17+00



Timber

+80 . 1900-



Private
Ditch

0- 23.5 . +40.5

458 → 23+00

570
↓ +67

Cultivated

0- 23.3 188.0-
 22+28.7

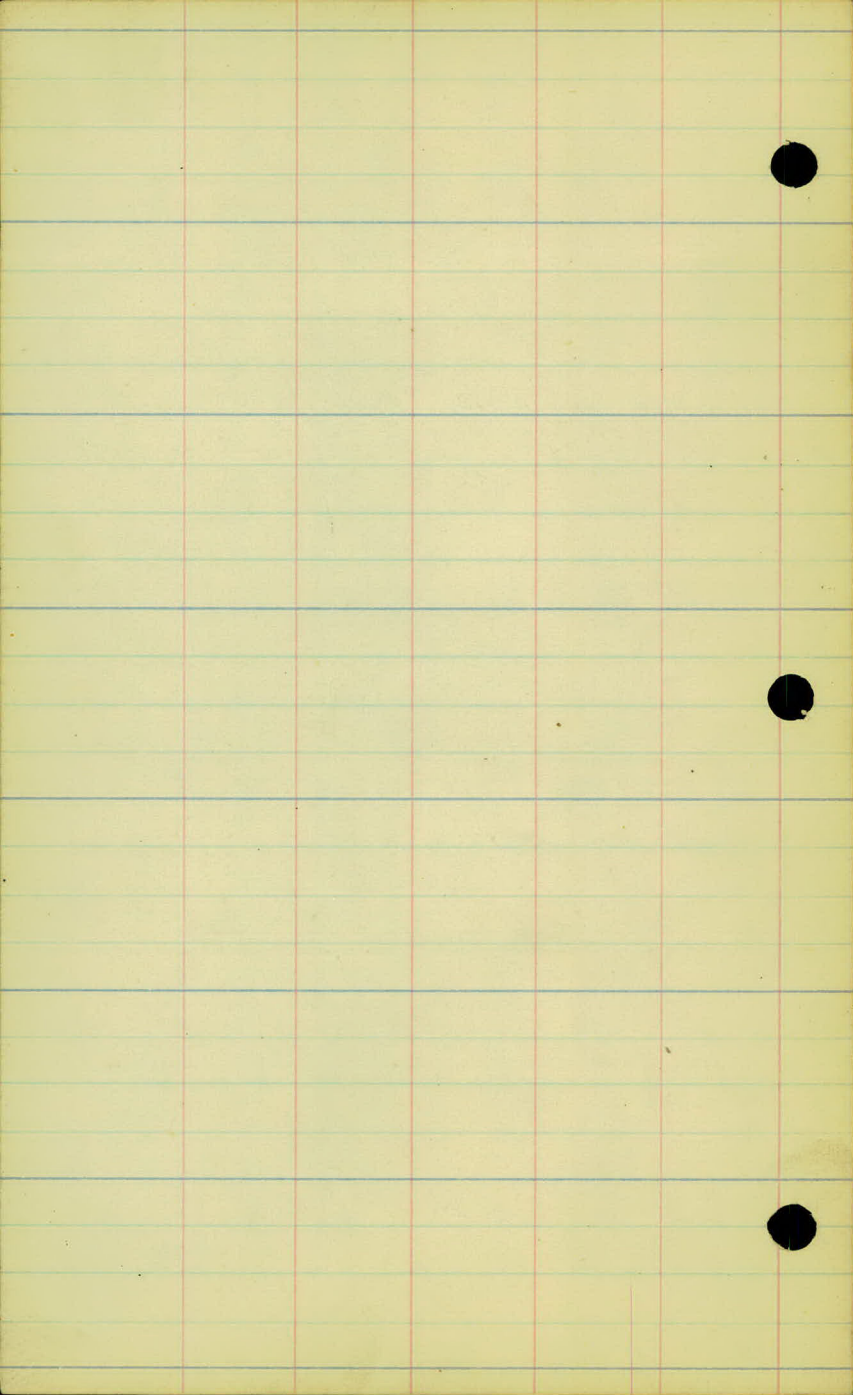
22+00

Timber

21+00

+99 193.0-
0- 23.4 +98





38° 28'

+15.6 12
26+00

11. +79
116 +74
135 +65

Private Drive 25+43 5° 25+43 Private Drive

17. +39.4
18. +28.6

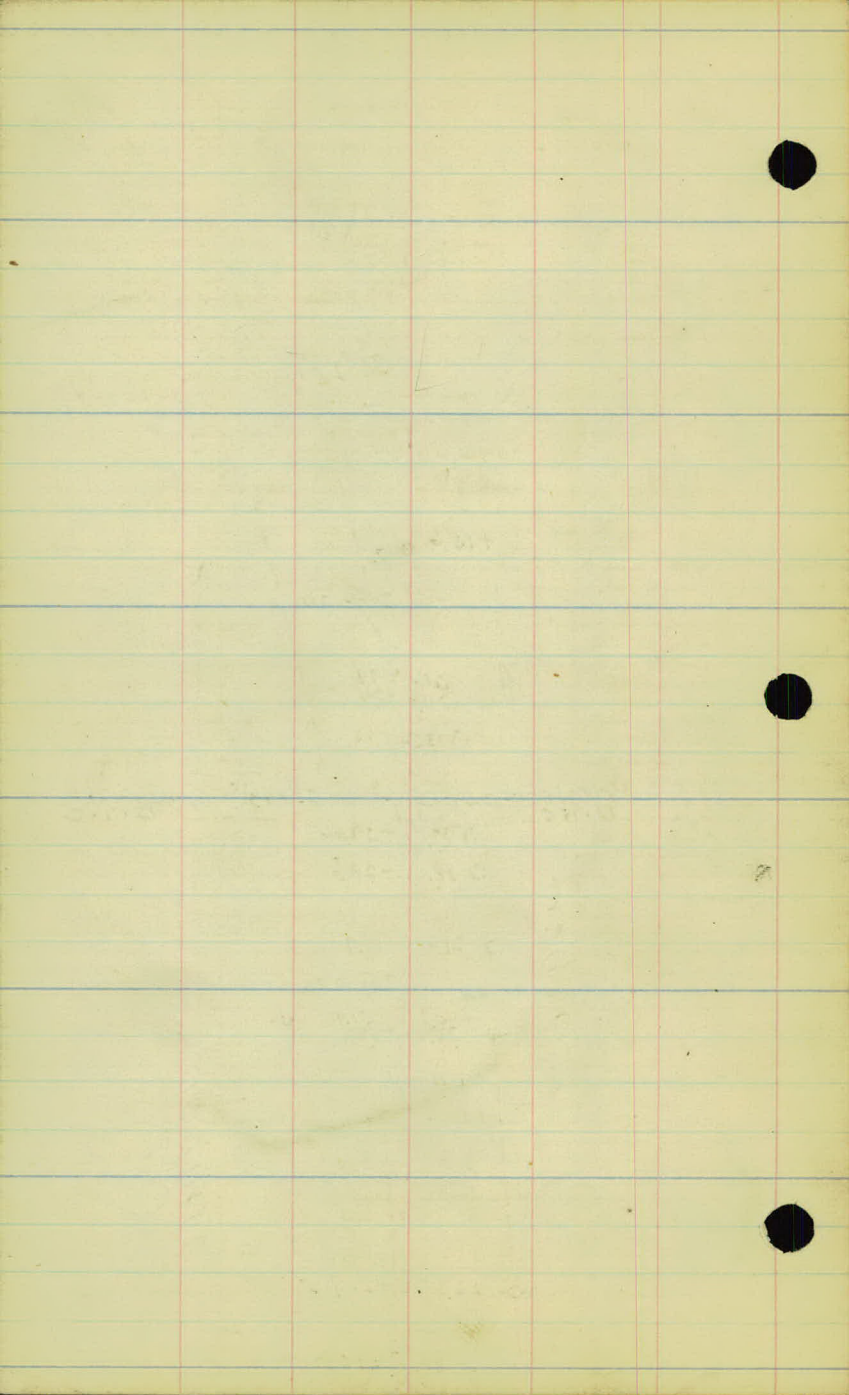
21.6 +11.7
25+00

+90.2 31.9
23.1 +88
13. 95

28.3 +21.9
18. 24+00

Timber

Timber



31+00

⊕ 21.3 +86.4

⊖ 18.4 +76.8

⊕ 23.2 +33.2

Rec'd. 8-13-24

30+00

+96.4 23. ~~30~~

+85.6 78.0

+83 117.8

+75.4 118.0

+52.6 20.2 ~~30~~

⊖ 17.6 +43.4

+32.5 16.3 ~~30~~

29+00

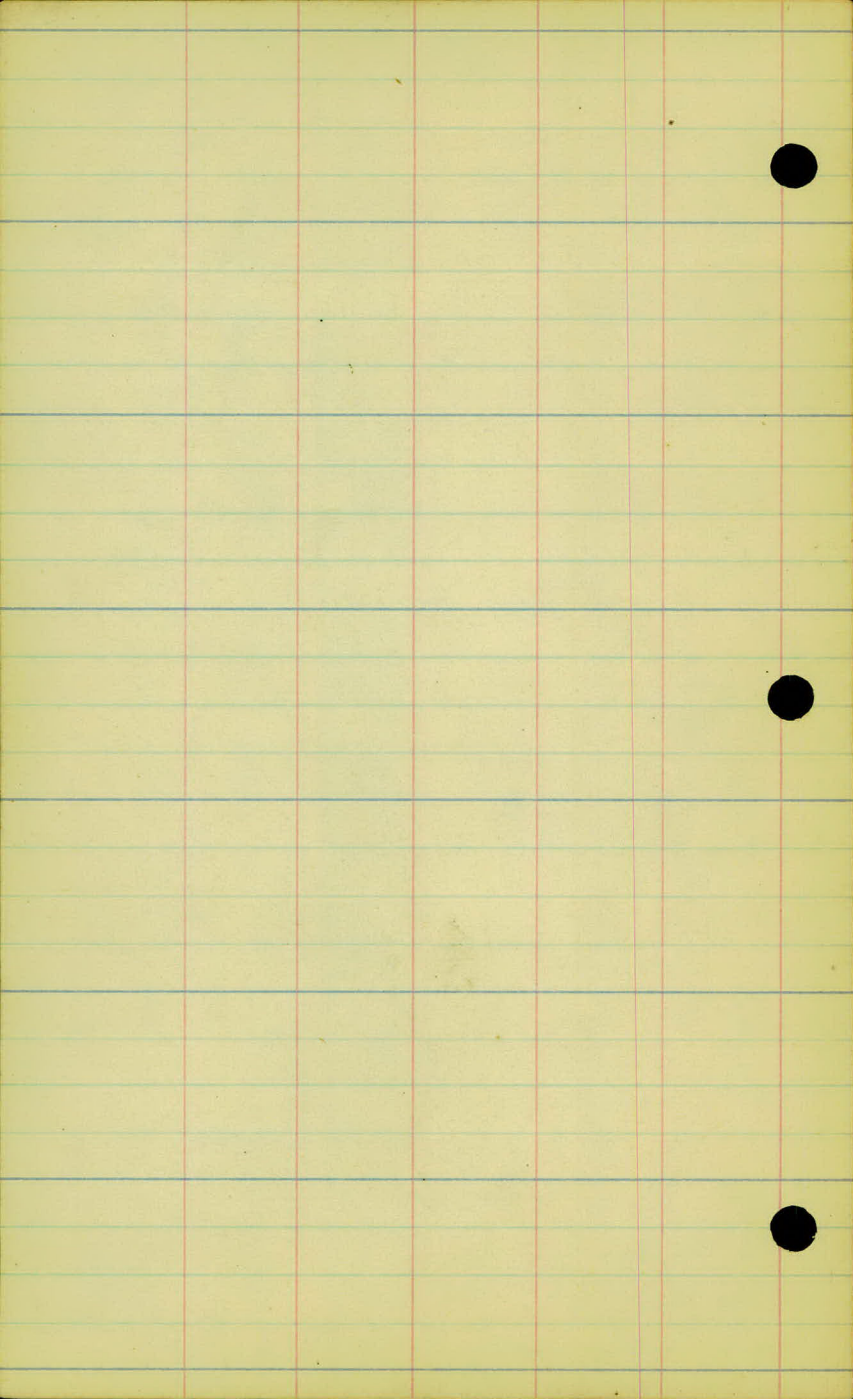
+91.3 21.1 ~~30~~

+67.7 18.7 ~~30~~

+65.4 9.80

⊖ 16.4 +02

28+00



36" Elm 29.6 +27.6

34+00

Private Drive

Lilac Hedge

32. +90
244 +89.2
+84.7 17.6 • T.P.
+68.7 1.5

32.3 +40

22.9 +22.9
+18.2

29.9

31.5 +0.71
33+00

24.4 +60.4

Conc. End Walls
2' x 4'
12" V.P.

25.5 +81.7 +42.7
+40.8 3.30
22.7 +28.8
25.9 +28.4

32+00

24.3 +96.8

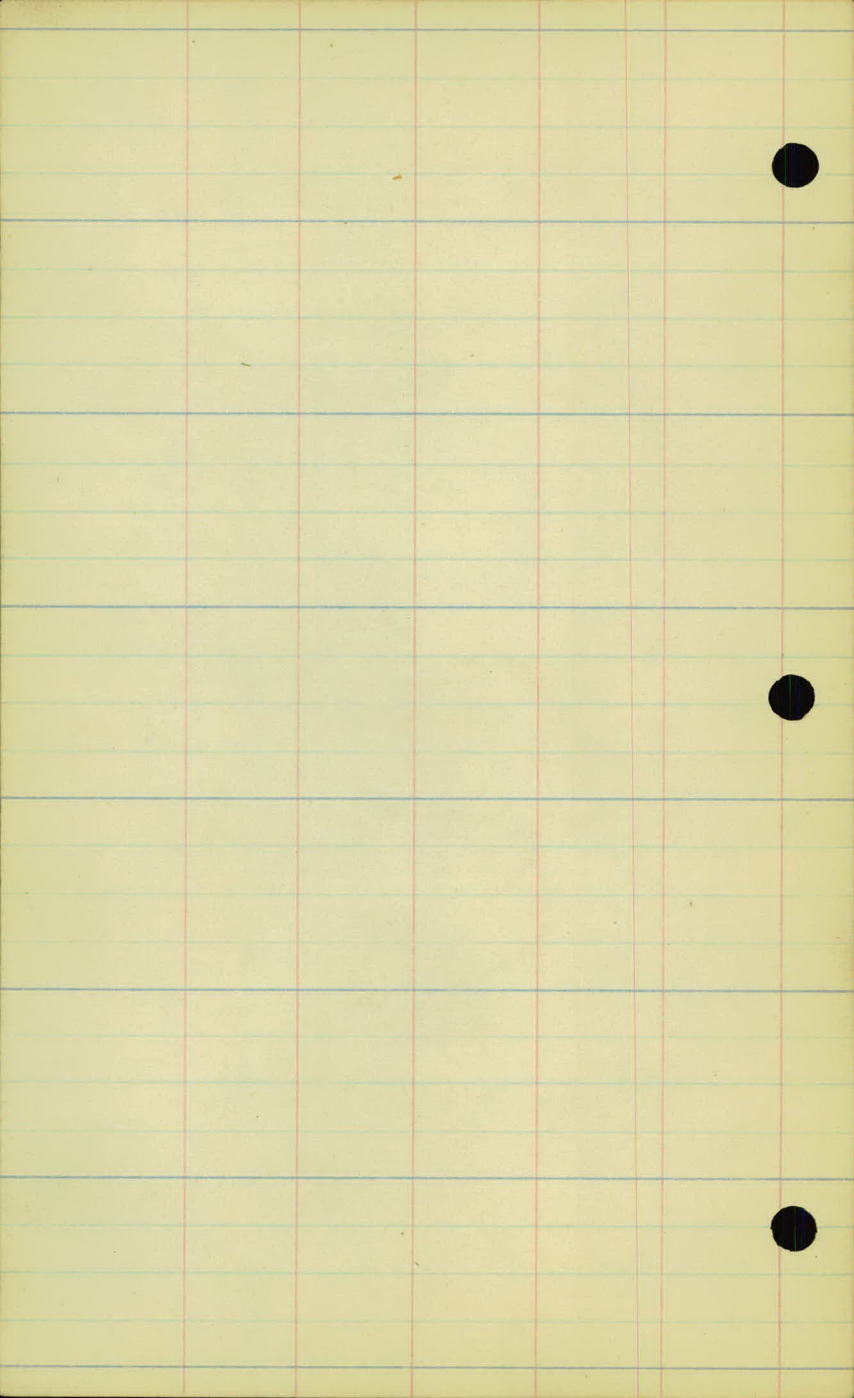
23.8 +67.4

+48.8 8.7

22.7 +33.2

+06.6 6.80

31+00



04.9-38+65

39+00

38+00

37+81.06

+68

+30.7 12%
6.0

LINE

287 +96.56
37+00 +97.26.8
6' Cam. Walk

Lakeview Ave.

(Improved St.)

+36.56 26.5
3.5 +35.8
6' Cam. Walk

+22.2 11.8

+09.8 18.6 T.P.
+06.2 29.2
36+00

+80.5 12.5
+73. 14.8

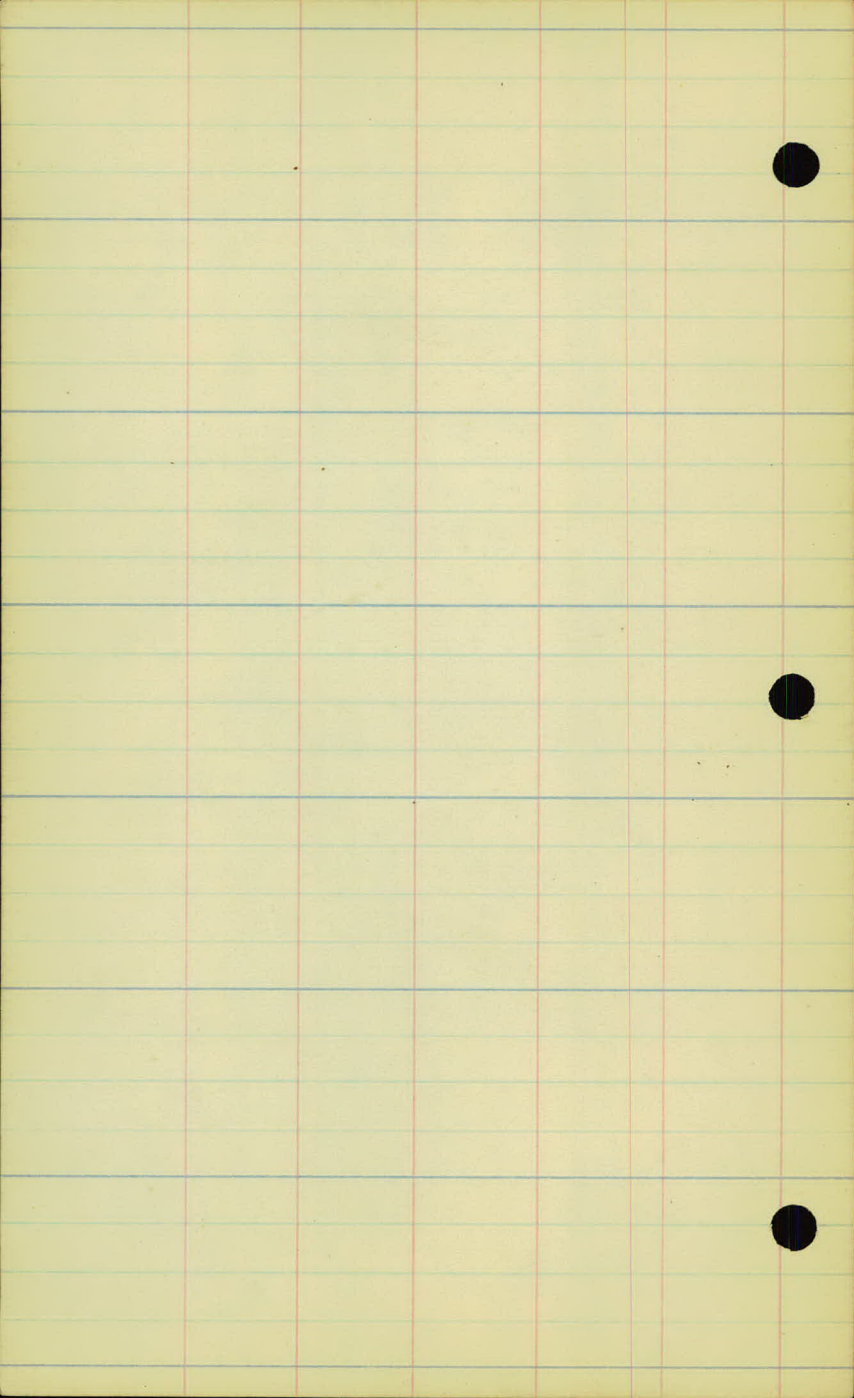
0- 27.1 94.0
+44.4

+22.5 7.1
+21 10.0
+15 10.5

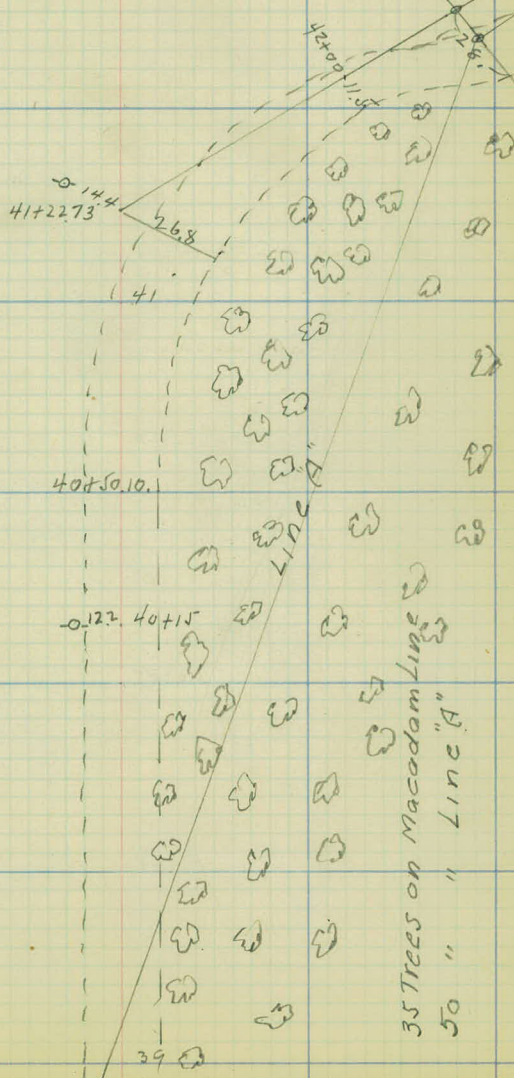
+03 8.2
35+00

11 +99
+89.6 18.2 T.P.

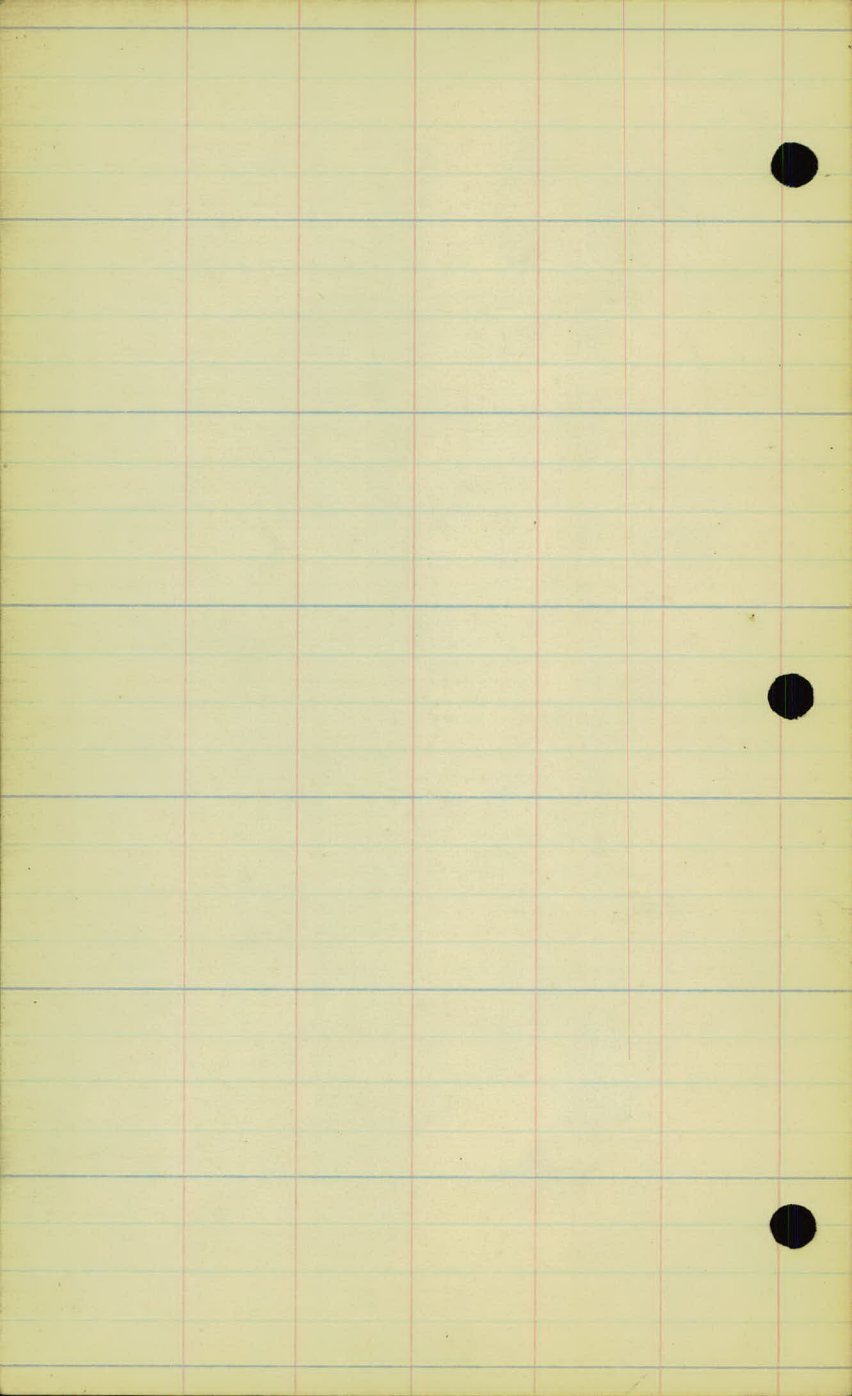
31.5 25.5
+72.2
+64 10.2

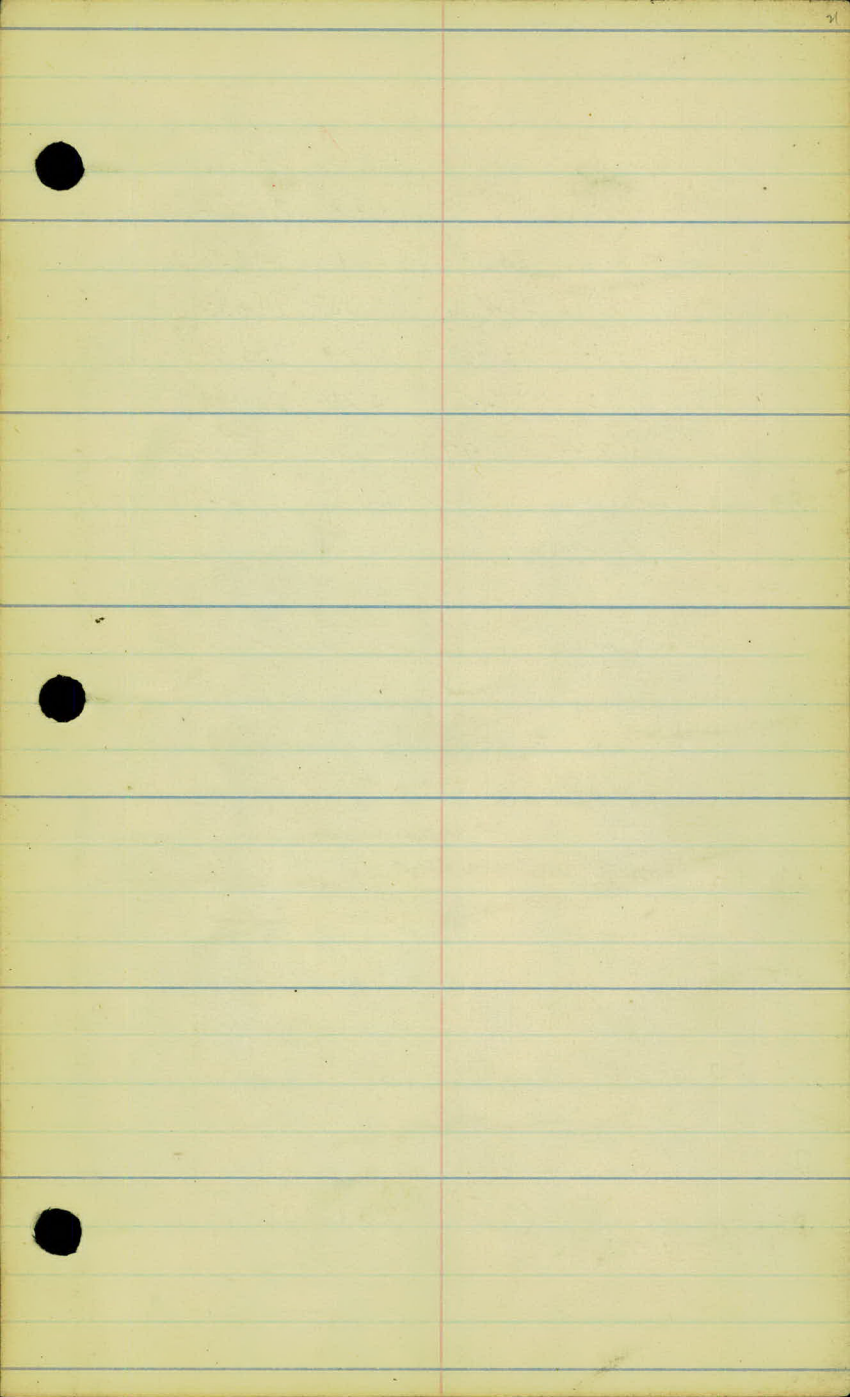


South



35 Trees on Macadam Line
 50 " " Line "A"





228.28 ✓
~~229.98~~

3+00

221.7

+50

20.5

4

19.5

+50

18.6

3.03

220.61 ✓
~~221.34~~

10.70

217.58 ✓
~~219.28~~

5

17.5

+50

16.8

6

16.4

+50

16.1

7

15.9

4.98

220.23 ✓
~~221.93~~

5.36

215.25 ✓
~~216.95~~

8

15.5

9

15.2

10

14.9

11

15.1

27	28	76	73	65	66	71	71	53	33	33
27.56					21.7					224.98
40	23	23	14	3		7	14	26	33	50

5.1	53	91	84	77	78	82	83	40	41	
223.18					223.5				224.18	
40	33	23	15	4		5	16	33	40	

	5.7	62	107	94	88	94	97	61	58	62
	222.58				21.5					222.08
	40	33	27	13		7	19	30	33	40

8.7	87	119	120	105	104	97	104	104	72	80
219.58						219.4				219.28
40	33	26	20	17	14		8	19	33	40

38	39	49	48	34	31	36	39	48	37	33	40
216.71					21.5						216.6
40	33	28	19	13		6	10	15	20	33	44

	6.1	61	56	44	36	38	42	45	60	61	56	5.1
	214.51					21.4						215.51
	40	33	21	13	3		6	9	16	26	33	44

	82	82	77	47	41	42	45	50	74	72	65
	212.41										214.11
	40	33	23	12	3		6	10	15	33	40

92	92	85	51	50	44	45	50	54	89	93	93
211.4											211.31
40	33	21	16	12	4		5	7	12	22	32

	10.8	104	55	51	46	47	51	109	110		
	209.8								209.6		
	33	22	14	12	5		5	18	33		

2097	104	148	157	215.5	152	146	098	209.3		
33	20	13	4		5	7	16	33		

209.1	095	142	156	153	215.2	149	10.0	209.5		
33	23	15	12	4		7	14	33		

211.3	106	14.6	150	214.9	147	144	100	209.3		
33	22	13	4		4	7	15	33		

10.9

40	41	77	77	57	50	50	51	53	60	87	95	95
216.23							215.1					210.73
40	33	28	22	17	13	4		3	8	10	26	33

220.73 ✓
221.95

12 215.3

B.M.

4.79 215.44 ✓

13 15.4

5.82 ~~222.99~~ 221.09 ✓ 4.96 ~~216.97~~ 215.27 ✓

14 14.7

15 16.3

16 17.1

8.03 ~~227.15~~ 225.45 ✓ 3.67 ~~219.12~~ 217.42 ✓

17 18.4

18 19.9

19 21.3

+ 84 Cen. Nebraska 21.7

9.38 ~~227.37~~ 230.67 ✓ 4.16 ~~224.97~~ 221.29 ✓

20 + 04.23

Ang. L. 38° 25' (Δ Back Tan.) 20.9

21 23.5

+ 75 24.7

31	43	74	76	53	48	49	53	58	69	74	81	76
217.1						25.3						212.63
40	33	26	19	13	5		4	8	11	15	20	33
3 Nails 10 T.P.-NE Cor. Hoyt												
		68	69	51	47	48	53	61	71	73	84	73
213.4						25.1						212.9
33		18	14	5			5	9	11	15	22	33

211.2	116	140	147	147	214.7	143	141	122	122	212.5
33	20	16	13	5		5	9	13	20	33

58	72	78	57	54	47	48	53	57	64	60
215.29						2.03				215.09
33	28	21	16	13	3		6	10	15	33
		56	57	44	40	40	45	55	65	
215.49						27.1			214.59	
33		17	13	3			7	13	33	

2185	180	2184	176	171	168	172	2167
33	13		8	11	14	17	33

2206	185	195	2199	193	190	181	2187
33	17	13		7	10	13	33

64	64	69	42	42	47	49	68	64
219.05				221.2				219.05
33	29	19	10		6	10	14	33
	42	36	31	38	41	42		
221.2				221.6		221.2		
33	23	11			20	33		

Top Mont. Co. Nebraska

10.5	46	80	91	89	100	106	94	79	70
220.17					220.7				223.07
40	33	17	6	4		7	11	33	40
10.2	101	95	74	69	72	78	99	92	92
220.47					223.5				221.47
40	33	25	17	7		3	7	33	40
93	85	75	42	86	60	65	58	46	45
221.37					224.1				226.17
40	33	24	18	8		4	9	33	40

230.67 ✓
~~222.37~~

22

225.1

+50

25.7

23

26.3

+50

26.7

24

7.56 $\frac{234.32}{230.02}$ 3.91 $\frac{226.76}{228.46}$ ✓

26.7

+50

26.6

25

26.6

+50

26.0

26+15.6

Ang. R. $38^{\circ}28'$ (Δ Back Tan.) ^{26.5}

27

24.8

+38

24.5

+44.7

N. Line L.C. + P. Ave. ^{24.4}

+77.7
_{0.27}

5.15

$\frac{229.47}{231.17}$ ✓

⊕

10.00

3.06

$\frac{224.32}{226.02}$ ✓

$\frac{228.41}{228.11}$ ✓

" " ^{24.5}₁₁

75	68	65	58	53	56	59	4.8	3.5	2.6	2.1
228.17					225.1					228.57
40	33	25	19	9		6	11	16	33	40

36	40	51	47	50	51					
227.07					225.7		236.6	237.6	240.1	241.6
40	33	19	8			14	26	33	50	60

25	30	46	41	44	41	4.5				
228.17				226.3			26.2	36.3	39.0	42.1
40	33	19	8		4	9	24	33	50	60

15	24	40	36	40	36	4.3	2.8			
229.17				226.7			27.9	32.1	36.7	40.0
40	33	20	8		5	9	12	24	33	50

7.6	7.3	6.7	4.2	3.4	4.0	3.8				
223.07					226.7	26.9	31.3	34.9	38.3	40.3
40	33	27	19	9		9	18	35	50	60

115	115	110	75	77	73	77	82	75	37	0.6
222.82						226.6				233.72
40	33	27	19	17	7		7	10	33	50

108	107	102	77	80	77	85	89	7.8	7.4	
223.5					226.6				226.9	
40	33	22	14	12		11	14	33	40	

71	74	94	83	85	80	80				
227.22			226.0				226.32	226.32		
40	33	5		17	33	40				

58	46	7.8	9.3	8.8	9.2	9.4	5.4	5.2		
228.5			226.5				228.92			
50	33		13	25	33	40	50	60		

20	45	100	95	99	90	37	1.5	1.7		
232.32			226.8						232.62	
50	33	8		13	20	33	41	50		

42	57	100	98	101	98	52	22	16		
230.12			225				232.12	232.72		
50	33	13		10	19	33	50	60		

93	95	99	99	99	98	96				
225.02			224.4				224.72			
50	33	15		18	33	50				

10.2	9.8	10.4								
224.12	224.5						224.2			
53							33			

3 Nails in T.P.-N.W. Cor. L.C. + P. Ave. + Osage

2.19	230.30		228.11
6.51	232.68	4.13	226.17
7.50	231.13	4.05	228.63
3.76	226.73	8.16	222.97
3.14	222.34	7.53	219.20
4.42	221.51	5.25	217.09
5.50	222.39	4.62	216.89
9.55	229.72	2.22	220.17
		0.43	229.29

7.01	231.56		224.55
		3.97	227.59

26
3 Nails in T.P.-N.Yr. Cor. L.G.+P.+ Osage

Mont. Cen. Nebraska

3 Nails in T.P.-NE Cor. Hoyt

	2.48	228.89		226.41		224.3
28+02.7						
+10.7						24.3
+50						24.0
+75						23.7
29						23.5
	465	227.68	5.86	223.03		
+50						23.2
30						22.7
+50						22.5
	3.74	226.77		223.03		
31						21.9
+50						21.6
32						21.3
+50						21.1

Recd. 8-13-24

46
224.29
33

46
222.3

46
224.29
33

51 49 47 52 46 51 56 39 0.0 0.0
223.79 722.3 228.89
40 33 16 11 10 13 18 33 40

63 59 55 49 52 52 40 38
222.59 222.0 225.09
40 33 13 10 21 33 40

16.3 138 137 58 52 53 63 56 58
212.59 223.7 223.09
50 33 28 14 6 18 33 40

19.0 149 140 62 54 56 92 94 93
211.89 223.5 219.59
50 33 27 14 8 25 33 40

11.7 100 87 51 45 48 10.7 11.0
215.98 223.2 216.68
50 33 22 14 8 33 40

9.2 7.5 74 5.4 50 53 69 9.5 10.5
218.48 222.7 217.18
40 33 23 15 6 16 33 40

7.5 57 5.7 6.5 56 52 54 60 4.5 51 5.5
220.18 222.5 222.18
40 33 24 22 15 5 11 15 33 40

3.6 1.6 1.6 4.8 50 4.9 4.9 5.2 3.0 3.5 3.5
223.17 221.9 223.27
40 33 25 20 16 5 10 14 33 40

3.3 2.5 3.4 5.4 5.4 5.2 5.3 5.9 4.5 5.3 5.3
223.47 221.6 221.47
40 33 26 22 16 3 10 13 33 40

6.3 6.3 6.5 5.8 5.1 5.5 5.7 6.6 8.1 8.3
220.47 221.3 218.47
40 33 22 17 8 3 7 33 40

7.6 7.6 7.5 6.0 5.7 5.3 5.7 5.8 9.1 10.3 10.4
219.17 221.1 214.37
40 33 26 22 19 8 3 14 33 40

226.77 ✓

33

5.75 226.25 ✓ 5.77 221.00 ✓

220.9

+50

221.1

34

+50

21.0

20.6

35

6.05 228.17 ✓ 4.13 222.12 ✓

20.9

36

+36.56

20.9

20.8

+66.56

& Lakeview

21.8

+96.56

21.3

37+20

+81.06

Ang. L.

21.4

20.5

38+20

23.0

207 40	207 33	204 28	210 19	216 10	220.9	220.6 3	218.5 6	16.0 33	157 40
-----------	-----------	-----------	-----------	-----------	-------	------------	------------	------------	-----------

51 221.15 40	52 33	55 20	47 12	52 221.0	7.8 9	100 26	115 33	11.6 214.65 40
--------------------	----------	----------	----------	-------------	----------	-----------	-----------	----------------------

50 221.25 40	50 33	49 20	47 12	53 220.9	6.6 22	77 33	86 217.65 40
--------------------	----------	----------	----------	-------------	-----------	----------	--------------------

47 221.55 40	50 33	55 28	54 24	48 12	57 220.55	62 12	72 33	73 218.95 40
--------------------	----------	----------	----------	----------	--------------	----------	----------	--------------------

50 221.25 40	50 33	53 24	47 15	54 220.85	53 8	62 14	72 23	69 219.35 40
--------------------	----------	----------	----------	--------------	---------	----------	----------	--------------------

Top Hyd. N.Y. Cor. Lakeview

69 221.27 40	69 33	68 28	61 15	65 5	73 220.9	77 10	81 19	79 25	79 33	78 220.37 40
--------------------	----------	----------	----------	---------	-------------	----------	----------	----------	----------	--------------------

-0.7 229.87 40	-0.2 33	0.0 28	+0.6 10	7.4 220.9	8.1 15	91 219.07 33	101 218.07 50
----------------------	------------	-----------	------------	--------------	-----------	--------------------	---------------------

74 220.77 40	73 33	65 28	59 15	64 221.8	78 19	91 33	10.1 218.07 217.73 50
--------------------	----------	----------	----------	-------------	----------	----------	--------------------------------

-0.9 229.07 40	-0.8 33	+0.2 28	+0.7 13	69 221.3	76 16	86 28	90 219.2 33	100 218.17 40
----------------------	------------	------------	------------	-------------	----------	----------	-------------------	---------------------

76 220.57 40	75 33	65 29	56 12	68 221.4	74 12	75 33	75 220.67 220.33 40
--------------------	----------	----------	----------	-------------	----------	----------	------------------------------

62 221.97 50	52 33	50 25	77 220.5	73 22	74 33	74 220.77 220.73 40
--------------------	----------	----------	-------------	----------	----------	------------------------------

69 221.27 40	67 33	63 23	48 9	52 223.0	59 7	83 21	78 33	98 220.37 220.25 42
--------------------	----------	----------	---------	-------------	---------	----------	----------	------------------------------

✓
22817

39

223.7

+50

23.6

40

4.22

✓
22683

5.56

✓
22261

23.3

+60

22.6

41+22.74

Ang. R.

21.8

42

21.5

+35

21.1

+66.47

20.7

3.83 223.00

$\frac{74}{220.77}$ 68 59 53 45 50 74 81 92 $\frac{218.97}{217.57}$
 $\frac{40}{219.37}$ 33 22 11 223.7 10 27 33 40

70 60 51 53 46 54 60 31 41 66
 $\frac{221.17}{219.25}$ 40 33 17 10 223.6 10 17 22 33 $\frac{221.57}{219.25}$
 42

63 53 41 55 49 60 66 35 52 64
 $\frac{221.87}{219.95}$ 40 33 23 10 223.3 11 17 22 33 $\frac{221.77}{219.82}$
 40

43 35 32 51 44 42 47 53 40 59 70 63
 $\frac{227.53}{227.95}$ 40 33 26 14 11 222.6 10 14 17 27 33 $\frac{218.53}{219.95}$
 40

44 38 26 54 50 47 51 68 71
 $\frac{226.43}{227.85}$ 40 33 15 6 221.8 $\frac{219.73}{219.15}$
 40 33 39 50

40 58 88 90 60 56 53 63 91 95 83 68
 $\frac{222.83}{224.17}$ 40 33 24 17 11 7 221.4 11 19 26 33 $\frac{220.53}{221.87}$
 40

70 61 57 65 61 72 55
 $\frac{219.83}{219.17}$ 33 10 221.1 19 26 33 $\frac{221.33}{221.77}$
 42

69 61 61 61 66 68 68
 $\frac{219.93}{221.27}$ 33 4 220.9 10 21 33 $\frac{220.03}{221.37}$
 41

H-9. S.E. South St

x Sections on Line "A"

	5.71	227.83	222.12	
37+00				222.2
+50				20.7
38				21.0
+50				22.3
39				23.2
+41				22.8
+45				25.4
+75				22.2
40+10				16.1
+29				16.3
+60				24.9
	6.23	230.92	3.14	224.69
41				26.5

Hyd N.E. Cor. Lakeview

77 ^{220.13} 220.47 40	7.7	7.3	6.1	5.6 222.2	5.7	6.6	7.4	7.1 ^{220.73} 221.07 40
	33	14	9		10	22	33	
	8.4 ^{219.43} 219.77 50	8.1	7.1	6.7 220.7	6.1	5.0	5.9 ^{221.43} 221.77 42	
	33			11	16	33		
	8.5 ^{219.33} 219.67 40	8.4	6.8	5.7 221.0	4.6	5.1 ^{222.73} 223.07 42		
	33			21	33			
	7.7 ^{220.13} 40	7.6	6.3	5.5 222.3	4.2	4.7	5.7 ^{221.03} 220.03 40	
	33	17		18	30	33		
4.8 ^{223.03} 40	4.8	4.7	4.8	4.2 223.2	4.6	5.5	3.9	7.4 ^{219.43} 219.77 40
	33	25	20	7	8	12	33	
	5.2 ^{222.63} 40	4.7	4.5	6.0 222.8	5.0	2.6	4.6	7.6 ^{219.13} 219.47 40
	33	26	8		3	15	33	
	5.1 ^{222.73} 40	4.5	6.1	2.4 225.4	3.3	6.4	7.4 ^{219.23} 219.57 40	8.6
	33	8		8	21	33		4.0
	4.8 ^{223.03} 45	6.0	4.0	5.6 222.2	7.0	7.6	7.7 ^{220.13} 219.47 40	
	33	27		7	33			
	6.2 ^{221.63} 40	7.2	11.1	11.7 216.1	12.5	12.5 ^{219.33} 219.67 40		
	33	12			33			
	6.9 ^{220.93} 40	8.6	10.0	11.5 216.3	11.3	12.3	12.3 ^{215.43} 215.77 40	12.4
	33	23		16	27	33		
	8.1 ^{219.73} 40	8.0	6.5	2.9 224.9	2.6	7.6	9.0 ^{218.43} 218.77 40	
	33	21		7	38			
	14.0 ^{216.92} 45	13.7	9.2	4.4 226.5	1.8	2.7	4.0 ^{224.62} 210.32 50	6.3
	33	16		18	33	40		

230.92 ✓

41+47

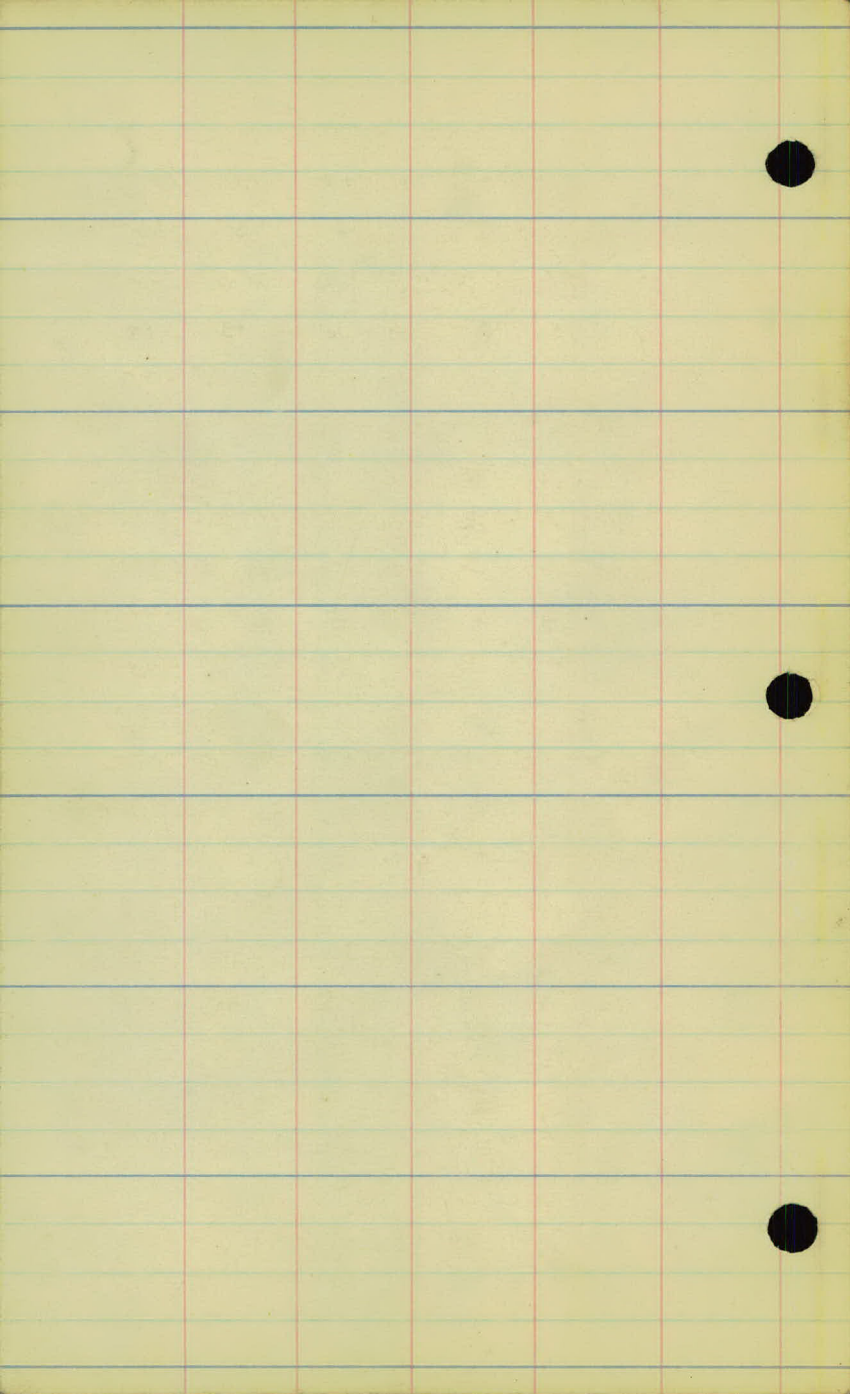
219.5

+79.9

R. Δ Back Tap
E South St. 20.4
7.92 223.00

96	109	107	102	116	114	104	111	111
21.32					219.5			219.82
40	33	21	13	4		16	33	40
	107	101	101	105	113	108	108	
	220.22			220.4			220.12	
	40	33	15		15	33	40	

Hyd. S.E., Cori South St



Sta. 40+25 Pl. 24" C.M. ✓

Sta. 36+45 " 15" C.M. ✓

37+80 Ent. R. Pl. 12" x 24" C.M. ✓

37+63 St. Int. R. Pl. 15" x 40' C.M. ✓

37+00 Ent. L. Pl. 12" x 24" C.M. ✓

32+43 Curb & N.W. sup. Remove
no curb. Regd. ✓

Figure below 5700-26-27+47
on right - W.N. Byrne

25+45 R & L. Ent. Pl. 2-12" x 24" C.M. ✓

22+80 Ent. L. Pl. 12" x 24" C.M. ✓

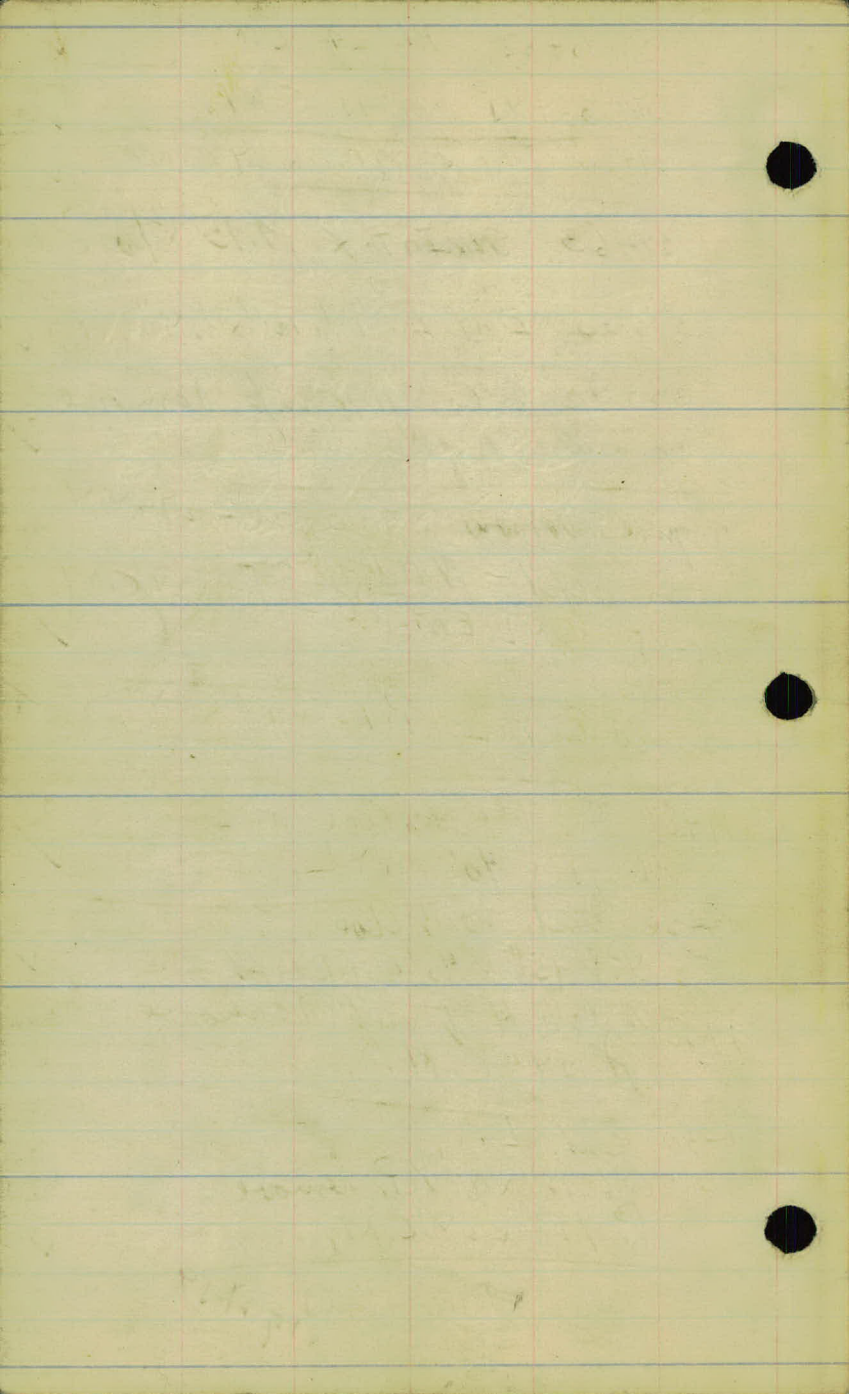
19+84 Int. Nebraska Ave. R & L.
Pl. 15" x 40' R & L. ✓

13+23 Int. Hoyt Ave.
Pl. 15" x 40' C.M. Left ✓

9+38 Curb & N.W. sup. Remove
Pl. 24" C.M. ✓

1+30 Ent. L.
Sup. 12" x 18" V.P. Remove.
Pl. 12" x 24" C.M. ✓

Proj. 2/59



Proj. 24-59

Final X-sections.

Csage st.

station	+	H.I	-	Elev.
B.M.	3.63	226.63 ✓		223.00 ✓

41+79.89

41+72

41+50

41+20

41+00

40+80

40+65

40+50

40+30

40+00

39+82

39+50

4.

E

K4.

Hyd. S.E. Cor. South St

210.8	5.8	5.8	6.1	6.5	7.1	6.7	6.7	218.0
35	15	220.5	17	21	22.5	41.5	48	8.6

210.7	5.9	5.7	5.9	6.6	6.8	6.8	6.5	6.4	9.0	217.9
37	18	220.7	16.5	18	17	20	34.5	38.5	43	

210.8	5.8	5.5	5.9	6.2	5.9	5.9	6.0	7.0	6.6	6.5	7.8	218.0
48	36	26	17	10	220.7	7	17.5	18	34.5	37	43	8.3

219.1	7.5	6.1	6.1	6.4	5.7	5.9	5.6	6.4	6.8	6.2	6.8	1.1	215.5
41	38	19	17.6	6	220.7	5	14.5	17	18	33	38		

217.1	9.5	6.4	5.7	6.3	5.7	5.4	5.8	6.7	6.2	6.3	227.0
41	35	19.5	18	12	221.2	11.5	17.5	19	33.5	40	

218.4	7.2	5.8	5.7	6.2	5.8	5.5	5.6	6.5	6.0	6.0	224.4
37.6	34.5	19	17.5	12.5	221.1	12	17.5	18.5	33.5	38	2.2

219.6	7.0	5.8	5.6	6.2	5.6	5.4	5.7	6.6	6.3	5.9	5.2	21.4
36	33.4	18.5	17.5	12	221.2	12	17.4	18	33.5	35.6		

219.5	7.1	5.8	5.8	6.2	5.7	5.3	5.7	6.8	5.9	5.9	7.5	219.1
35.7	32.5	19.5	18	12.5	221.3	12.4	17	18.5	33	36		

219.5	7.1	6.2	6.0	6.4	5.6	5.4	5.6	6.4	6.0	6.1	12.0	214.6
35	32.5	19.5	18	12	221.2	12	17.5	18.7	33.5	41.		

221.9	4.9	5.7	5.9	6.4	5.6	5.2	5.9	6.5	6.2	6.2	7.7	216.9
36	31	20	18.5	13	221.4	12	17.5	19	33	38.5		

221.2	5.4	5.5	5.5	5.7	6.4	5.5	5.6	6.3	6.0	6.1	1.7	219.7
38	33	37	21	18.7	12	221.6	11	16	17.5	33	35	

223.1	3.5	5.4	5.4	5.9	5.2	5.1	5.5	6.0	5.5	5.7	7.0	219.6
38	32.4	20	19	11	221.5	12	16	17.5	33.5	36.5		

Station	+	H.I	-	Elev
---------	---	-----	---	------

126.63 ✓

39+22

39+00

38+75

38+50

38+00

37+50

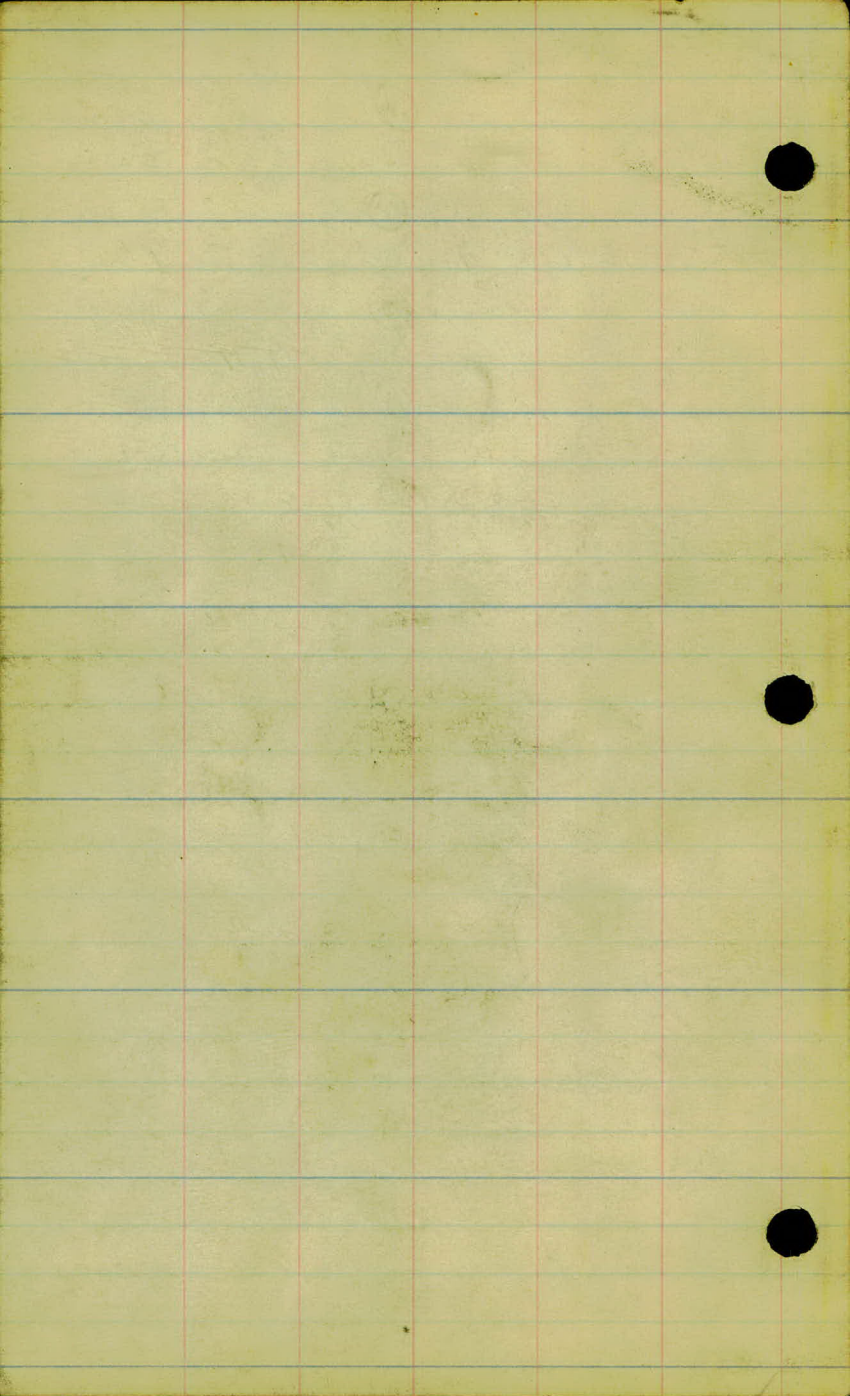
37+00

36+66 ⁵⁶/₋

B.M.

4.51

122.12 ✓



Project 24-59

X-Sections & Slope Stakes

Sta. 36+66⁵⁶ ; 41+79.89

Office of Ramsey Co. Engineer
ST. PAUL, MINN.

Date Filed 8/22/24 24-59

File No. "10"

Sta.	+	H.I	-	Elev. Revised Grade	Gr. Rod.
B.M.	5.65	228.65 ✓		223.00	
41+79.89				219.86	8.8 ✓
41+72				219.88	8.8 ✓
41+50				219.95	8.8 ✓
41+20				220.04	8.6 ✓
41+00				220.10	8.6 ✓
T.P.	3.43	230.77 ✓	-1.31	227.34 ✓	
41+00				220.10	10.7 ✓
40+80				220.15	10.6 ✓
40+65				220.21	10.6 ✓
40+50				220.25	10.5 ✓
T.P.	7.04	227.23 ✓	10.58	220.19 ✓	
40+30				220.31	6.9 ✓
40+00				220.40	6.8 ✓
T.P.	3.28	229.40 ✓	1.11	226.12 ✓	
39+82				225.46	8.9 ✓

Inlet Mark Line

Lt. S Rt.

W.H.C. } Aug. 21, 1924
Eck }
Crabing }
Finkle }

Note: slope stakes set 0.3 above profile grade

X-section Level 19' Lt. & Rt.

Hydrant S.E. Cor. South St.

Inlet of Existing Walk

$46 \frac{8.7}{-7}$	$40 \frac{8.0}{-7}$	$30 \frac{7.8}{-7}$	$19 \frac{7.8}{+0.4}$	$8.4 \frac{4.8}{+0.6}$	$4.1 \frac{1.3}{-0.3}$	$8.9 \frac{1.9}{-0.1}$	$8.6 \frac{3.3}{-7}$	$3.4 \frac{4.8}{-7}$
---------------------	---------------------	---------------------	-----------------------	------------------------	------------------------	------------------------	----------------------	----------------------

$45 \frac{8.1}{-7}$	$37 \frac{7.9}{-7}$	$19 \frac{7.7}{+0.9}$	$8.5 \frac{2.5}{+0.3}$	$8.6 \frac{1.9}{+0.2}$	$8.8 \frac{2.6}{-7}$	$9.8 \frac{3.5}{-1.3}$
---------------------	---------------------	-----------------------	------------------------	------------------------	----------------------	------------------------

$34 \frac{7.5}{+1.0}$	$19 \frac{8.5}{+0.3}$	$12 \frac{6.0}{+0.8}$	$6 \frac{8.1}{+0.7}$	$8.7 \frac{4.4}{-0.6}$	$8.8 \frac{3.8}{+0.1}$	$9.2 \frac{4.1}{-0.7}$
-----------------------	-----------------------	-----------------------	----------------------	------------------------	------------------------	------------------------

$37.5 \frac{11.8}{-3.0}$	$30 \frac{11.7}{-1.0}$	$19 \frac{9.6}{-1.0}$	$8.6 \frac{4.3}{+4.3}$	$2.6 \frac{2.6}{+6.0}$	$2.5 \frac{2.5}{-7}$	$9.3 \frac{3.8}{+5.0}$
--------------------------	------------------------	-----------------------	------------------------	------------------------	----------------------	------------------------

$38.3 \frac{11.8}{3.5}$	$19 \frac{7.8}{+0.8}$	$8.6 \frac{2.0}{+6.6}$
-------------------------	-----------------------	------------------------

$10.7 \frac{1.8}{+3.9}$	$2.4 \frac{2.4}{-3.1}$	$8.7 \frac{3.7}{+1.0}$
-------------------------	------------------------	------------------------

$34 \frac{11.2}{-0.9}$	$19 \frac{9.1}{+1.5}$	$10.6 \frac{5.5}{+5.1}$	$5.5 \frac{5.5}{+5.1}$	$4.1 \frac{4.1}{+6.0}$	$4.3 \frac{4.3}{-2.5}$	$7.0 \frac{7.0}{-1.3}$
------------------------	-----------------------	-------------------------	------------------------	------------------------	------------------------	------------------------

$34 \frac{11.1}{-0.8}$	$19 \frac{9.3}{+1.3}$	$10.6 \frac{4.7}{+5.9}$	$5.5 \frac{5.5}{+5.1}$	$10.6 \frac{10.6}{+0.1}$	$11.6 \frac{11.6}{-2.8}$	$10.3 \frac{10.3}{+0.0}$
------------------------	-----------------------	-------------------------	------------------------	--------------------------	--------------------------	--------------------------

$34.5 \frac{11.2}{-1.0}$	$19 \frac{10.5}{+0.0}$	$10.5 \frac{8.7}{+1.8}$	$8.5 \frac{8.5}{+2.0}$	$13.6 \frac{13.6}{-2.1}$	$14.3 \frac{14.3}{-3.8}$	$14.8 \frac{14.8}{+1.8}$	$14.7 \frac{14.7}{-1.5}$
--------------------------	------------------------	-------------------------	------------------------	--------------------------	--------------------------	--------------------------	--------------------------

$34 \frac{17.5}{+0.9}$	$19 \frac{9.7}{-2.8}$	$10.9 \frac{10.9}{-4.0}$	$10.4 \frac{10.4}{-2.5}$	$11.6 \frac{11.6}{+4.6}$
------------------------	-----------------------	--------------------------	--------------------------	--------------------------

$34 \frac{5.8}{+1.0}$	$19 \frac{7.6}{-0.8}$	$10.8 \frac{10.8}{-3.7}$	$11.0 \frac{11.0}{+4.2}$	$10.5 \frac{10.5}{-4.0}$
-----------------------	-----------------------	--------------------------	--------------------------	--------------------------

$35 \frac{6.4}{+2.2}$	$19 \frac{7.6}{+1.3}$	$8.9 \frac{8.9}{+0.0}$	$9.6 \frac{9.6}{-0.9}$	$9.4 \frac{9.4}{-0.8}$
-----------------------	-----------------------	------------------------	------------------------	------------------------

Station	+	H.I	-	Elev.	
39750		729.40 ✓		220.55	8.8 ^{8.9}
39772				220.63	8.8
39700				220.70	8.7
38775				220.77	8.6
38750				220.85	8.5 ^{8.16}
I.P.	4.72	728.09 ✓	6.03	223.37 ✓	
38750				220.85	7.2
38700				221.00	7.1
37750				221.15	6.9
37700				221.30	6.8
36766.5 ⁶				221.40	6.7
new B.M.			5.98	222.11	
checking	1.49	227.60 ✓	1.98	226.11 ✓	
B.M.			4.61	222.99 ✓	

Lt. 9 et.

$$\begin{array}{l} \times \\ 37 \overline{) 61} \\ \underline{22} \\ 19 \overline{) 12} \\ \underline{16} \\ 7 \overline{) 19} \\ \underline{09} \\ 3 \overline{) 40} \\ \underline{34} \\ 40 \end{array} \quad \textcircled{8.9} \quad \begin{array}{l} \times \\ 7.5 \overline{) 19} \\ \underline{13} \\ 6 \end{array} \quad \begin{array}{l} \times \\ 7.5 \overline{) 34.5} \\ \underline{21} \\ 13.5 \end{array}$$

$$\begin{array}{l} \times \\ 350 \overline{) 65} \\ \underline{70} \\ 19 \overline{) 59} \\ \underline{17} \\ 73 \end{array} \quad \textcircled{4.8} \quad \begin{array}{l} \times \\ 4.4 \overline{) 5} \\ \underline{4.4} \\ 0 \end{array} \quad \begin{array}{l} \times \\ 6.8 \overline{) 19} \\ \underline{13.6} \\ 5.2 \end{array} \quad \begin{array}{l} \times \\ 101 \overline{) 354} \\ \underline{202} \\ 152 \end{array}$$

$$\begin{array}{l} \times \\ 349 \overline{) 6.5} \\ \underline{349} \\ 19 \overline{) 6.4} \\ \underline{19} \\ 6 \overline{) 57} \\ \underline{57} \\ 6.2 \end{array} \quad \textcircled{4.7} \quad \begin{array}{l} \times \\ 7.0 \overline{) 10} \\ \underline{7.0} \\ 3.0 \end{array} \quad \begin{array}{l} \times \\ 5.7 \overline{) 12} \\ \underline{5.7} \\ 6.4 \end{array} \quad \begin{array}{l} \times \\ 8.1 \overline{) 33.5} \\ \underline{243} \\ 9.2 \end{array}$$

$$33 \overline{) 83} \quad 19 \overline{) 7.0} \quad 10 \overline{) 6.5} \quad \begin{array}{l} \times \\ 5.9 \overline{) 27} \\ \underline{59} \\ 7.8 \end{array} \quad \begin{array}{l} \times \\ 5.8 \overline{) 8} \\ \underline{5.8} \\ 2.2 \end{array} \quad \begin{array}{l} \times \\ 6.2 \overline{) 19} \\ \underline{12.4} \\ 6.8 \end{array} \quad \begin{array}{l} \times \\ 8.3 \overline{) 33} \\ \underline{249} \\ 8.4 \end{array}$$

$$\begin{array}{l} \times \\ 7.1 \overline{) 14} \\ \underline{7.1} \\ 7.4 \end{array} \quad \begin{array}{l} \times \\ 5.8 \overline{) 19} \\ \underline{5.8} \\ 13.2 \end{array} \quad \begin{array}{l} \times \\ 6.2 \overline{) 30} \\ \underline{12.4} \\ 17.8 \end{array} \quad \begin{array}{l} \times \\ 7.1 \overline{) 341} \\ \underline{247} \\ 94 \end{array}$$

$$\begin{array}{l} \times \\ 34 \overline{) 7.7} \\ \underline{68} \\ 19 \overline{) 6.9} \\ \underline{19} \\ 7.2 \end{array} \quad \textcircled{7.2}$$

$$36.0 \overline{) 2.8} \quad 19 \overline{) 8.2} \quad \begin{array}{l} \times \\ 7.1 \overline{) 20} \\ \underline{14} \\ 6.0 \end{array} \quad \begin{array}{l} \times \\ 6.0 \overline{) 19} \\ \underline{12} \\ 7.0 \end{array} \quad \begin{array}{l} \times \\ 4.8 \overline{) 35.0} \\ \underline{28.8} \\ 6.2 \end{array}$$

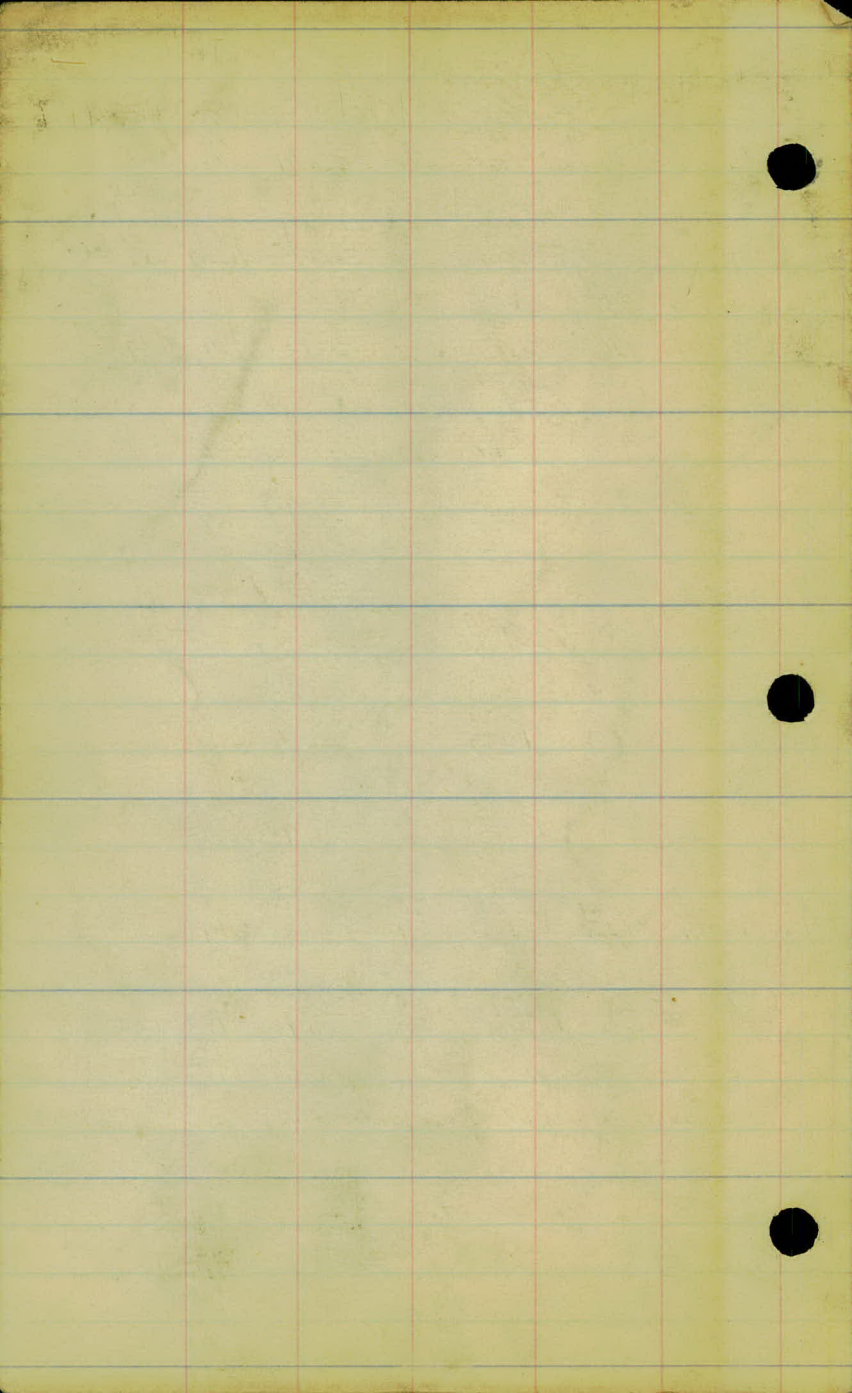
$$35.7 \overline{) 84} \quad 19 \overline{) 5.7} \quad \begin{array}{l} \times \\ 7.4 \overline{) 95} \\ \underline{58} \\ 37 \end{array} \quad \begin{array}{l} \times \\ 6.3 \overline{) 19} \\ \underline{12.6} \\ 6.7 \end{array} \quad \begin{array}{l} \times \\ 5.1 \overline{) 34.5} \\ \underline{25.5} \\ 9.0 \end{array}$$

$$34 \overline{) 7.7} \quad 19 \overline{) 7.5} \quad 16 \overline{) 7.7} \quad 11 \overline{) 6.5} \quad \begin{array}{l} \times \\ 5.9 \overline{) 10.9} \\ \underline{59} \\ 5.0 \end{array} \quad \begin{array}{l} \times \\ 5.8 \overline{) 10} \\ \underline{5.8} \\ 4.2 \end{array} \quad \begin{array}{l} \times \\ 6.8 \overline{) 19} \\ \underline{13.6} \\ 5.2 \end{array} \quad \begin{array}{l} \times \\ 7.8 \overline{) 35.0} \\ \underline{23.4} \\ 11.6 \end{array}$$

$$33 \overline{) 5} \quad \begin{array}{l} \times \\ 6.7 \overline{) 0.3} \\ \underline{0.3} \\ 19 \overline{) 5.9} \\ \underline{19} \\ 6.0 \end{array} \quad \begin{array}{l} \times \\ 6.1 \overline{) 10.3} \\ \underline{61} \\ 4.2 \end{array} \quad \begin{array}{l} \times \\ 7.6 \overline{) 19} \\ \underline{15.2} \\ 3.8 \end{array} \quad \begin{array}{l} \times \\ 9.7 \overline{) 33} \\ \underline{291} \\ 3.9 \end{array}$$

Hydrant N.W. Cor. Lake View Ave.

Hyd. S.E. Cor. 20th St.



5615-6
2004
611

U 2472